



# SLOVENSKI STANDARD

## SIST EN 12574-3:2006

01-maj-2006

BUXca Yý U  
SIST EN 12574-3:2004

---

BYdfYa ] b]nUVc'b]\_]nUcXdUX\_Y'É" "XY. J UfbcgfbY]b'nXfUj glj YbY'nU hYj Y

Stationary waste containers - Part 3: Safety and health requirements

Stationäre Abfallsammelbehälter - Teil 3: Sicherheits- und  
Gesundheitsschutzanforderungen

Conteneurs fixes a déchets - Partie 3: Exigences d'hygiène et de sécurité

<https://standards.iteh.ai/catalog/standards/sist/76109ce4-cae6-4431-b754-478ad1e30bb3/sist-en-12574-3-2006>

Ta slovenski standard je istoveten z: **EN 12574-3:2006**

---

### ICS:

13.030.40	Naprave in oprema za odstranjevanje in obdelavo odpadkov	Installations and equipment for waste disposal and treatment
-----------	--	--

**SIST EN 12574-3:2006**

**en,fr,de**

**iTeh STANDARD PREVIEW**  
**(standards.iteh.ai)**

SIST EN 12574-3:2006

<https://standards.iteh.ai/catalog/standards/sist/76109ce4-cae6-4431-b754-478ad1e30bb3/sist-en-12574-3-2006>

EUROPEAN STANDARD  
NORME EUROPÉENNE  
EUROPÄISCHE NORM

**EN 12574-3**

February 2006

ICS 13.030.40

Supersedes EN 12574-3:2002

English Version

## Stationary waste containers - Part 3: Safety and health requirements

Conteneurs fixes à déchets - Partie 3: Exigences d'hygiène et de sécurité

Stationäre Abfallsammelbehälter - Teil 3: Sicherheits- und Gesundheitsschutzanforderungen

This European Standard was approved by CEN on 28 December 2005.

CEN members are bound to comply with the CEN/CENELEC Internal Regulations which stipulate the conditions for giving this European Standard the status of a national standard without any alteration. Up-to-date lists and bibliographical references concerning such national standards may be obtained on application to the Central Secretariat or to any CEN member.

This European Standard exists in three official versions (English, French, German). A version in any other language made by translation under the responsibility of a CEN member into its own language and notified to the Central Secretariat has the same status as the official versions.

CEN members are the national standards bodies of Austria, Belgium, Cyprus, Czech Republic, Denmark, Estonia, Finland, France, Germany, Greece, Hungary, Iceland, Ireland, Italy, Latvia, Lithuania, Luxembourg, Malta, Netherlands, Norway, Poland, Portugal, Romania, Slovakia, Slovenia, Spain, Sweden, Switzerland and United Kingdom.

**iTeh STANDARD PREVIEW**  
(standards.iteh.ai)  
SIST EN 12574-3:2006  
<https://standards.iteh.ai/catalog/standards/sist/76109ce4-cae6-4431-b754-478ad1e30bb3/sist-en-12574-3-2006>



EUROPEAN COMMITTEE FOR STANDARDIZATION  
COMITÉ EUROPÉEN DE NORMALISATION  
EUROPÄISCHES KOMITEE FÜR NORMUNG

Management Centre: rue de Stassart, 36 B-1050 Brussels

## Contents

	page
Foreword .....	3
1 Scope .....	4
2 Normative references .....	4
3 General requirements of construction .....	4
4 Handles .....	4
5 Wheels .....	5
6 Immobilization .....	5
7 Edges .....	6
8 Lids for manual handling.....	6
9 Cleaning.....	6
10 Marking .....	6
11 Information for use .....	6
Annex A (informative) A-Deviations .....	7

## Figures

[SIST EN 12574-3:2006](https://standards.iteh.ai/catalog/standards/sist/76109ce4-cae6-4431-b754-478ad1e30bb3/sist-en-12574-3-2006)

[https://standards.iteh.ai/catalog/standards/sist/76109ce4-cae6-4431-b754-](https://standards.iteh.ai/catalog/standards/sist/76109ce4-cae6-4431-b754-478ad1e30bb3/sist-en-12574-3-2006)

[478ad1e30bb3/sist-en-12574-3-2006](https://standards.iteh.ai/catalog/standards/sist/76109ce4-cae6-4431-b754-478ad1e30bb3/sist-en-12574-3-2006)

Figure 1 — Handles (round, oval, rectangular).....	5
Figure 2 — Clearance .....	5

## Foreword

This European Standard (EN 12574-3:2006) has been prepared by Technical Committee CEN/TC 183 "Waste management", the secretariat of which is held by DIN.

This European Standard shall be given the status of a national standard, either by publication of an identical text or by endorsement, at the latest by August 2006, and conflicting national standards shall be withdrawn at the latest by August 2006.

This European Standard supersedes EN 12574-3:2002.

This European Standard is one part of the series of standards of EN 12574 about "Stationary waste containers" comprising the following Parts:

- Part 1: Containers with a capacity up to 10 000 l with flat or dome lid(s), for trunnion, double trunnion or pocket lifting device – Dimensions and design;
- Part 2: Performance requirements and test methods;
- Part 3: Safety and health requirements.

To help in the understanding of the requirements they are not split into separate safety, ergonomic and health sections but are divided into chapters dealing with constructional units.

According to the CEN/CENELEC Internal Regulations, the national standards organizations of the following countries are bound to implement this European Standard: Austria, Belgium, Cyprus, Czech Republic, Denmark, Estonia, Finland, France, Germany, Greece, Hungary, Iceland, Ireland, Italy, Latvia, Lithuania, Luxembourg, Malta, Netherlands, Norway, Poland, Portugal, Romania, Slovakia, Slovenia, Spain, Sweden, Switzerland and United Kingdom.

## EN 12574-3:2006 (E)

### 1 Scope

This part of EN 12574 specifies essential safety and health requirements for stationary waste containers (in the text also called containers), not including special containers for hazardous waste.

### 2 Normative references

The following referenced documents are indispensable for the application of this European Standard. For dated references, only the edition cited applies. For undated references, the latest edition of the referenced document (including any amendments) applies.

EN 1501-1, *Refuse collection vehicles and their associated lifting devices — General requirements and safety requirements — Part 1: Rear-end loaded refuse collection vehicles*

EN 1501-2, *Refuse collection vehicles and their associated lifting devices — General requirements and safety requirements — Part 2: Side loaded refuse collection vehicles*

EN 12574-1:2006, *Stationary waste containers — Part 1: Containers with a capacity up to 10 000 l with flat or dome lid(s), for trunnion, double trunnion or pocket lifting device — Dimensions and design*

EN 12574-2:2006, *Stationary waste containers — Part 2: Performance requirements and test methods*

ITIH STANDARD PREVIEW  
(standards.iteh.ai)

### 3 General requirements of construction

3.1 The container shall be constructed so that it shall be compatible with the designated lifting device and shall be automatically interlocked into the lifting device during the tilting and emptying operation.

3.2 The container shall be safely fitted to the lifting device of the refuse collection vehicles in accordance with the relevant part of EN 1501 without being carried or lifted manually.

3.3 The container shall be stable on an inclined surface of at least 10° (ten degrees) in any direction and in any load condition up to its nominal load. The average repose angle of the test load shall be considered.

### 4 Handles

4.1 Wheeled containers shall have handles fitted for manual positioning.

4.2 Handles for positioning the container shall have the external form shown in Figure 1 (based on the external form of Figure 1, the ring form section and the u-shaped form section are permitted). A minimum length of 120 mm and a minimum clearance of 36 mm around the handle are required (see Figure 2).

4.3 Handles for manual positioning shall be fitted in a height range above the ground of 900 mm to 1 400 mm.

4.4 Handles shall be positioned such that they are clear of the supporting devices so that injuries from the vehicle lifting device during picking up and lifting operations are avoided.

Dimensions in millimetres

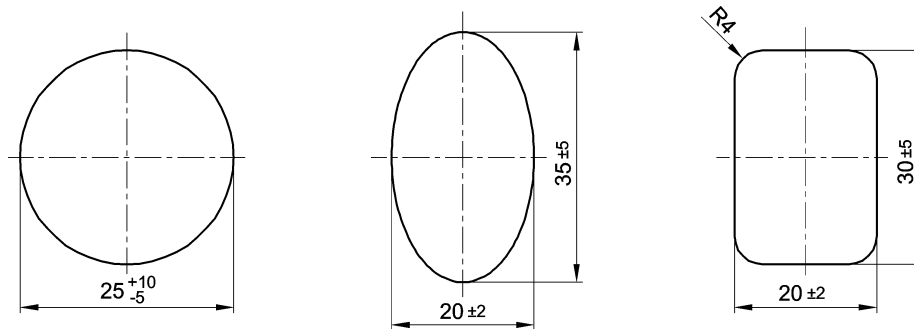
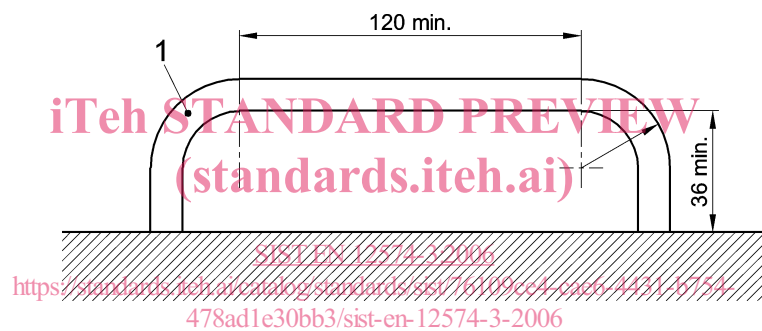


Figure 1 — Handles (round, oval, rectangular)

Dimensions in millimetres

**Key**

- 1 Handle

Figure 2 — Clearance

**5 Wheels**

- 5.1** Containers may be equipped with wheels for positioning purposes only when empty.
- 5.2** Wheels for manual positioning shall have a nominal diameter of 200 mm minimum. At least two of them shall be designed as swivel castors.
- 5.3** The wheels and their position shall be such that the pulling forces are minimized and in any case below 285 N.
- 5.4** All wheels or castors shall be constructed to resist static and dynamic stress, such as refuse collection vehicle (RCV) pushing the nominal loaded container. This can be achieved by stress calculation.

**6 Immobilization**

The container shall be capable of being immobilized either by design or by device on a minimum slope of 10° (ten degrees).

**EN 12574-3:2006 (E)****7 Edges**

The container shall not have any sharp edges (see 5.5 of EN 12574-1:2006).

**8 Lids for manual handling**

**8.1** To avoid the danger of crushed fingers when closing the lid, dome lids shall have a safety clearance to the front edge of at least 35 mm. This safety clearance shall be closed by an elastic material.

**8.2** Containers with dome lids are to be provided with a mechanism to hold the lid open automatically and prevent it from accidentally closing.

**8.3** Containers with assisted lids are to be provided with a device to ensure that the container lid cannot cause injury by its movement. Spring reaction forces acting on the operator shall not exceed 75 N. This can be verified by visual inspection and measuring the force.

**8.4** The container shall be designed in such a manner that, in particular, a child's head cannot be trapped between lid and body of the container. The container shall be tested according to EN 12574-2:2006, 4.10.4.

**9 Cleaning**

Containers shall be designed for easy cleaning.

**10 Marking**

The container shall be marked according to 9.1 of EN 12574-1:2006.

**iTeh STANDARD PREVIEW**  
(standards.iteh.ai)

**11 Information for use**

[SIST EN 12574-3:2006](#)

[https://standards.iteh.ai/catalog/standards/sist/76109ce4-cae6-4431-b754-](https://standards.iteh.ai/catalog/standards/sist/76109ce4-cae6-4431-b754-478ad1e30bb3/sist-en-12574-3-2006)

[478ad1e30bb3/sist-en-12574-3-2006](#)

**11.1** Instructions for use are to be supplied so that the operator can have access to all available information on the correct use of containers, this shall include safety and health requirements and maintenance instructions including frequencies.

**11.2** So that purchasers and all users of the container can have the necessary information to enable them to choose and to use the container safely, the information made available should as a minimum include:

- reference of this European Standard, i.e. EN 12574-3;
- nominal volume;
- total permissible mass, in kilograms (kg);
- type of the wheel bearings, if any;
- whether brakes are equipped or not;
- essential dimensions including height of the handles;
- information about the maximum permissible ground slope for use;
- pulling force which is measured during the type test according to EN 12574-2.