

---

---

**Tool holders with cylindrical shank —**

**Part 7:**  
**Type F with taper seat**

*Porte-outil à queue cylindrique —*

*Partie 7: Porte-outil de type F pour outils à queue conique*

iTeh STANDARD PREVIEW  
(standards.iteh.ai)

ISO 10889-7:1997

<https://standards.iteh.ai/catalog/standards/sist/5830e2b6-c956-44c4-9e5e-05a186d8228f/iso-10889-7-1997>



Small tools.

ISO 10889 consists of the following parts, under the general title *Tool holders with cylindrical shank*:

- Part 1: Cylindrical shank, location bore — Technical delivery conditions
- Part 2: Type A, shanks for tool holders of special designs
- Part 3: Type B with rectangular radial seat
- Part 4: Type C with rectangular axial seat
- Part 5: Type D with more than one rectangular seat
- Part 6: Type E with cylindrical seat
- Part 7: Type F with taper seat
- Part 8: Type Z, accessories

© ISO 1997

All rights reserved. Unless otherwise specified, no part of this publication may be reproduced or utilized in any form or by any means, electronic or mechanical, including photocopying and microfilm, without permission in writing from the publisher.

International Organization for Standardization  
Case postale 56 • CH-1211 Genève 20 • Switzerland  
Internet central@iso.ch  
X.400 c=ch; a=400net; p=iso; o=isocs; s=central

Printed in Switzerland

ISO (the International Organization for Standardization) is a worldwide federation of national standards bodies (ISO member bodies). The work of preparing International Standards is normally carried out through ISO technical committees. Each member body interested in a subject for which a technical committee has been established has the right to be represented on that committee. International

# Tool holders with cylindrical shank —

## Part 7:

### Type F with taper seat

#### 1 Scope

ISO 10889 applies to tool holders with cylindrical shank for machine tools with non-rotating tools, preferably for turning machines.

This part of ISO 10889 specifies dimensions, designations and complementary technical delivery conditions for tool holders with taper seat of type F and with cylindrical shank mounting system in accordance with ISO 10889-1. For non-standardized tool holders with taper seat, such as tool holders as shown in the drawings, it is recommended to apply the corresponding specifications of this part of ISO 10889.

**iTeh STANDARD PREVIEW**  
(standards.iteh.ai)

#### 2 Normative references

The following standards contain provisions which, through reference in this text, constitute provisions of this part of ISO 10889. At the time of publication, the editions indicated were valid. All standards are subject to revision, and parties to agreements based on this part of ISO 10889 are encouraged to investigate the possibility of applying the most recent editions of the standards indicated below. Members of IEC and ISO maintain registers of currently valid International Standards.

ISO 296:1991, *Machine tools — Self-holding tapers for tool shanks.*

ISO 2768-1:1989, *General tolerances — Part 1: Tolerances for linear and angular dimensions without individual tolerance indications.*

ISO 10889-1:1997, *Tool holders with cylindrical shank — Part 1: Cylindrical shank, location bore — Technical delivery conditions.*

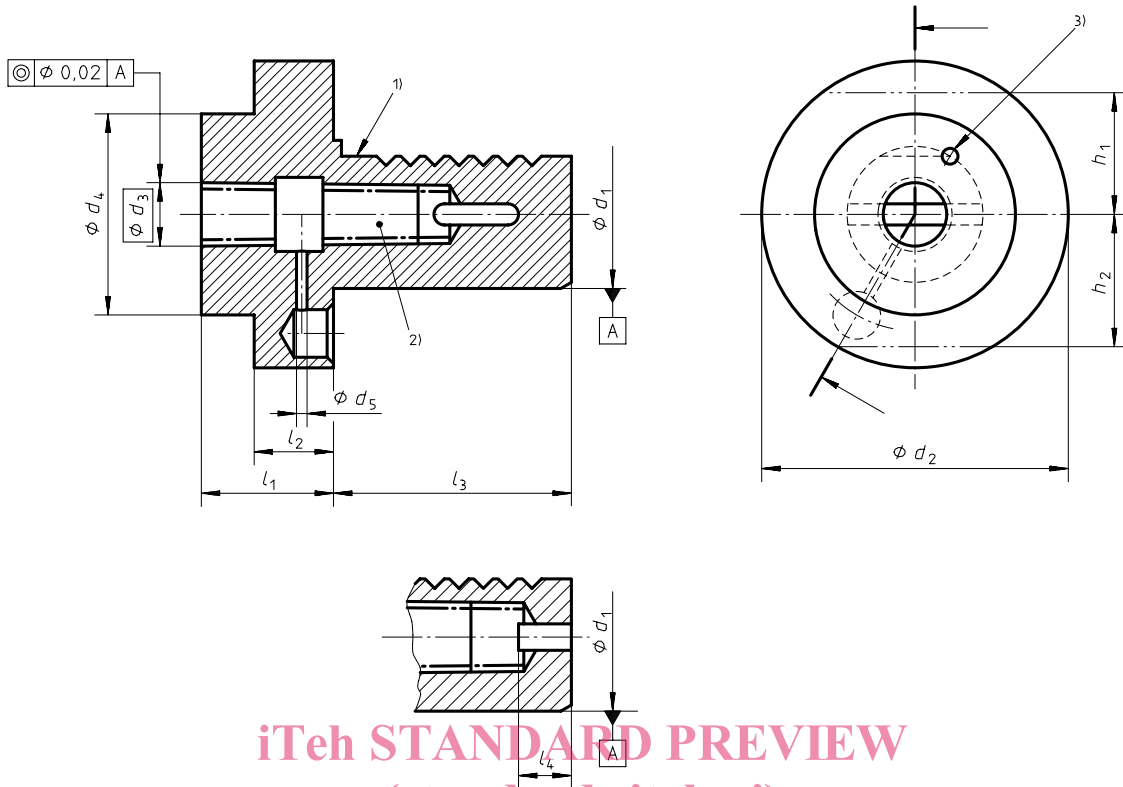
#### 3 Dimensions

See figure 1 and table 1.

Unspecified details shall be chosen appropriately.

General tolerances: ISO 2768-1 - mB

Dimensions in millimetres



iTeh STANDARD PREVIEW  
(standards.iteh.ai)

- 1) Cylindrical shank in accordance with ISO 10889-1.
- 2) Internal Morse taper, type BIK in accordance with ISO 296. [ISO 10889-7:1997](https://standards.iteh.ai/catalog/standards/sist/5830e2b6-c956-44c4-9e5e-05a186d8228f/iso-10889-7-1997)
- 3) External coolant supply (closeable). <https://standards.iteh.ai/catalog/standards/sist/5830e2b6-c956-44c4-9e5e-05a186d8228f/iso-10889-7-1997>

Figure 1 — Taper seat type F tool holder, for taper shanks with flat tang

Table 1

Dimensions in millimetres

$d_1$	Internal Morse taper, type BIK No.	$d_2$	$d_3$	$d_4$	$d_5$	$h_1$	$h_2$	$l_1$	$l_2$	$l_3$	$l_4$
20	1	50	12,065	—	—	—	23	23	—	40	7 <sup>1)</sup>
25	1	58	12,065	—	—	25	25	23	—	48	—
	2		17,780	—	5			27	—		—
30	1	68	12,068	—	—	28	30	27	—	55	—
	2		17,780	—	5			—	—		14 <sup>1)</sup>
40	2	83	17,780	55	5	32,5	—	36	22	63	—
	3		23,825	58	6			80			14 <sup>1)</sup>
	4		31,267	68	7			—			
50	2	98	17,780	55	5	35	—	36	30	78	—
	3		23,825	58	6			80			—
	4		31,267	68	7			18 <sup>1)</sup>			
60	3	123	23,825	58	6	42,5	—	36	30	94	—
	4		31,267	68	7			50			—
	5		44,399	98	7			63			32 <sup>1)</sup>
80	4	158	31,267	68	7	55	—	50	40	104	—
	5		44,399	98	7			—			—

1) These sizes have a recess for taper shanks with full tang up to the end face of the cylindrical shank. The design of slot is at the discretion of the manufacturer.

#### 4 Designation

A type F tool holder with Morse taper seat in accordance with this part of ISO 10889 shall be designated by

- "Tool holder";
- reference to this part of ISO 10889, i.e. ISO 10889-7;
- type (F);
- nominal diameter,  $d_1$ , in millimetres;
- internal taper type.

#### EXAMPLE

A type F tool holder with a Morse taper seat and nominal diameter  $d_1 = 40$  mm and an internal taper, type BIK 3 is designated as follows:

**Tool holder ISO 10889-7 - F - 40 - MT-BIK 3**

## 5 Technical delivery conditions

As a complement to the requirements of ISO 10889-1 the following applies.

The taper socket shall be hardened, with a surface hardness ( $56^{+4}_0$ ) HRC, and a depth of hardening of at least 0,5 mm.

The taper angle tolerance class of taper socket shall be AT5 in accordance with ISO 296.

Tool holders can also be supplied with hardened contact surface. Then it shall be mentioned in the designation (H for hardened contact surface).

For instance, a type F tool holder with a Morse taper seat and nominal diameter  $d_1 = 40$  mm, an internal taper type BIK 3 and hardened contact surface is designated as follows:

**Tool holder ISO 10889-7 - F - 40 - MT-BIK 3 H**

**iTeh STANDARD PREVIEW**  
**(standards.iteh.ai)**

ISO 10889-7:1997

<https://standards.iteh.ai/catalog/standards/sist/5830e2b6-c956-44c4-9e5e-05a186d8228f/iso-10889-7-1997>

**iTeh STANDARD PREVIEW**  
**(standards.iteh.ai)**

ISO 10889-7:1997

<https://standards.iteh.ai/catalog/standards/sist/5830e2b6-c956-44c4-9e5e-05a186d8228f/iso-10889-7-1997>

**iTeh STANDARD PREVIEW**  
**(standards.iteh.ai)**

ISO 10889-7:1997

<https://standards.iteh.ai/catalog/standards/sist/5830e2b6-c956-44c4-9e5e-05a186d8228f/iso-10889-7-1997>

---

---

**ICS 25.060.20**

**Descriptors:** tools, tool holders, shanks, parallel shanks, form specifications, dimensions, delivery condition, designation.

Price based on 4 pages

---

---