

SLOVENSKI

**SIST EN 30-1-
3:2004/OprA1:2004**

PREDSTANDARD

oktober 2004

**Plinski kuhalni aparati za gospodinjstvo – 1-3. del: Varnost – Aparati s
steklokeramično kuhalno ploščo – Dopolnilo A1**

Domestic cooking appliances burning gas - Part 1-3: Safety - Appliances having a
glass ceramic hotplate - Amendment A1

ICS 97.040.20

Referenčna številka
SIST EN 30-1-
3:2004/OprA1:2004(en;fr;de)

ICS

English version

**Domestic cooking appliances burning gas - Part 1-3: Safety -
Appliances having a glass ceramic hotplate**

Appareils de cuisson domestiques utilisant les
combustibles gazeux - Partie 1-3 : Sécurité - Appareils
comportant une table de travail vitrocéramique

Haushalt-Kochgeräte für gasförmige Brennstoffe - Teil 1-3:
Sicherheit - Geräte mit Glaskeramik-Kochteil

This draft amendment is submitted to CEN members for enquiry. It has been drawn up by the Technical Committee CEN/TC 49.

This draft amendment A1, if approved, will modify the European Standard EN 30-1-3:2003. If this draft becomes an amendment, CEN members are bound to comply with the CEN/CENELEC Internal Regulations which stipulate the conditions for inclusion of this amendment into the relevant national standard without any alteration.

This draft amendment was established by CEN in three official versions (English, French, German). A version in any other language made by translation under the responsibility of a CEN member into its own language and notified to the Management Centre has the same status as the official versions.

CEN members are the national standards bodies of Austria, Belgium, Cyprus, Czech Republic, Denmark, Estonia, Finland, France, Germany, Greece, Hungary, Iceland, Ireland, Italy, Latvia, Lithuania, Luxembourg, Malta, Netherlands, Norway, Poland, Portugal, Slovakia, Slovenia, Spain, Sweden, Switzerland and United Kingdom.

Warning : This document is not a European Standard. It is distributed for review and comments. It is subject to change without notice and shall not be referred to as a European Standard.



EUROPEAN COMMITTEE FOR STANDARDIZATION
COMITÉ EUROPÉEN DE NORMALISATION
EUROPÄISCHES KOMITEE FÜR NORMUNG

Management Centre: rue de Stassart, 36 B-1050 Brussels

Contents

Foreword.....	3
6.7 Additional requirements for appliances with glass ceramic hotplates.....	4
6.7.4 Glass ceramic hotplates utilising fully pre-mixed gas and air burners for which the reduced rate may only be achieved by cycling the burner on and off or high-low	4
7.6 Additional tests for appliances with glass ceramic hotplates	4
7.6.4 Glass ceramic hotplates utilising fully pre-mixed gas and air burners for which the reduced rate may only be achieved by cycling the burner on and off or high-low	4
Table ZA.1	5

Foreword

This document (EN 30-1-3:2003/prA1:2004) has been prepared by Technical Committee CEN/TC 49 "Gas cooking appliances", the secretariat of which is held by UNI.

This document is currently submitted to the CEN Enquiry.

This document has been prepared under a mandate given to CEN by the European Commission and the European Free Trade Association, and supports essential requirements of EU Directive(s).

5.1.4.3 Glass ceramic panel

Replace the third paragraph with the following:

In the case of appliance incorporating live parts underneath the glass or glass ceramic surface, the requirements given in 13.3 of EN 60335-2-6:1999 have to be met.

6.7 Additional requirements for appliances with glass ceramic hotplates

Add:

6.7.4 Glass ceramic hotplates utilising fully pre-mixed gas and air burners for which the reduced rate may only be achieved by cycling the burner on and off or high-low

When burners of this description are operated individually under the test conditions of 7.6.4, the CO concentration by volume in the air-free and water-free products of combustion shall not exceed 0,15 %.

7.6 Additional tests for appliances with glass ceramic hotplates

Add:

7.6.4 Glass ceramic hotplates utilising fully pre-mixed gas and air burners for which the reduced rate may only be achieved by cycling the burner on and off or high-low

7.6.4.1 Supply conditions

The appliance shall be installed and adjusted in accordance with 7.5.2.2.1 of EN 30-1-4:2002.

The requirements of 6.7.4 are verified with each of the burners subject to these requirements operating individually under the supply conditions given in Table 1.

Table 1 - Supply conditions

Gas family	Test gas	Appliance inlet pressure	Burner control setting
First and/or second family gases	The reference gas(es) (corresponding to the appliance category)	70 % p_n	Full on
Third family gases	The reference gas(es) (corresponding to the appliance category)	p_{min}	Full on

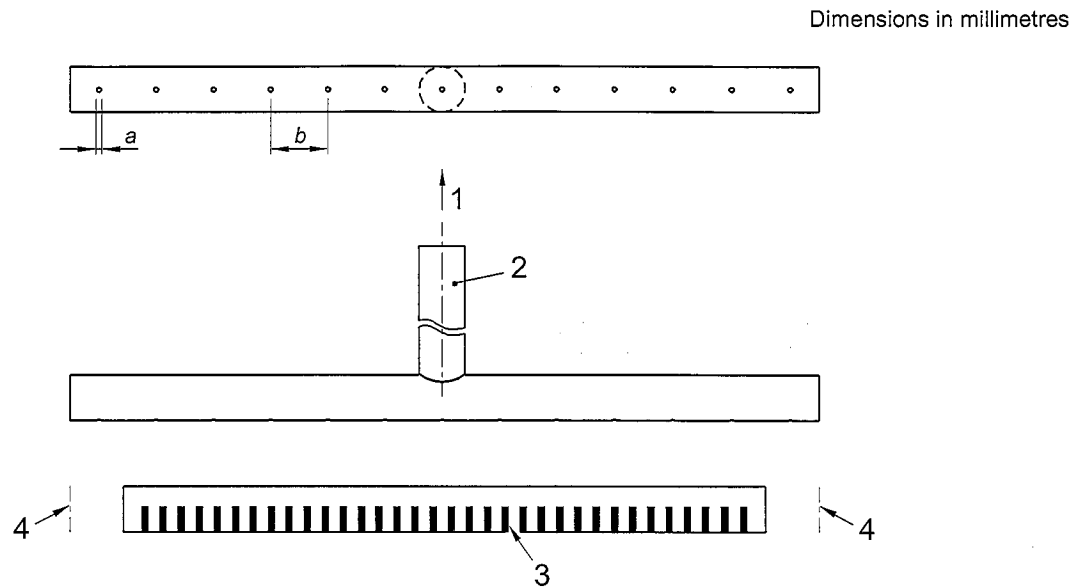
7.6.4.2 Sampling the products of combustion

The sampling of the products of combustion is carried out with each burner in turn. No pans are placed on the burners.

The sampling of the products of combustion is carried out by means of a probe situated at the combustion products outlet from the burner and in such a way that the sample taken is representative, i.e. as close as possible to the average composition of all the products of combustion. A suitable probe is shown in Figure 2.

The requirement shall be verified 20 min after the start of the test.

If the burner is under cyclic (on-off or high-low) control during the test, the CO and CO₂ concentrations in the sample are monitored continuously over at least two complete cycles of the burner control. This data is used to plot curves of the CO and CO₂ concentrations against time, in order to determine their mean concentrations during one complete cycle of the burner control.



- 1 To analyser
- 2 Steel or stainless steel tube 8/1 *
- 3 Slots: example of combustion products outlet
- 4 The probe overlaps not more than 20 mm each side of the combustion products outlet
- $a = 1$
- $b = 10$
- *) Diameter/Thickness

Figure 2 — Combustion test probe

7.6.4.3 Analysis of the products of combustion

The analysis shall be carried out in accordance with 7.5.2.2.3 of EN 30-1-4:2002.

Table ZA.1

Replace the whole line corresponding to the Essential Requirement 3.4.1 with the following:

Essential requirement	Subject	Requirements of EN 30-1-1:1998 ^a	Requirements of EN 30-1-4:2002 ^b	Requirements of this standard	Comments
.....					
3.4.1	Flame stability	6.1.9.2 and 6.1.9.3	6.2.2, 6.3.2, 6.5.1 and 6.6.1		
	Concentration of harmful substances in the combustion products	5.2.9.3	5.3.5, 6.2.3, 6.3.3, 6.5.2, 6.5.3, 6.6.2 and 6.6.3 (see foreword)	6.7.4 (in EN 30-1-3/A1)	