

INTERNATIONAL ELECTROTECHNICAL COMMISSION  
COMMISSION ÉLECTROTECHNIQUE INTERNATIONALE

IEC 62110  
Edition 1.0 2009-08

IEC 62110  
Édition 1.0 2009-08

ELECTRIC AND MAGNETIC FIELD LEVELS  
GENERATED BY AC POWER SYSTEMS –  
MEASUREMENT PROCEDURES WITH REGARD  
TO PUBLIC EXPOSURE

CHAMPS ÉLECTRIQUES ET MAGNÉTIQUES  
GÉNÉRÉS PAR LES SYSTÈMES  
D'ALIMENTATION A COURANT ALTERNATIF –  
PROCÉDURES DE MESURE DES NIVEAUX  
D'EXPOSITION DU PUBLIC

CORRIGENDUM 1

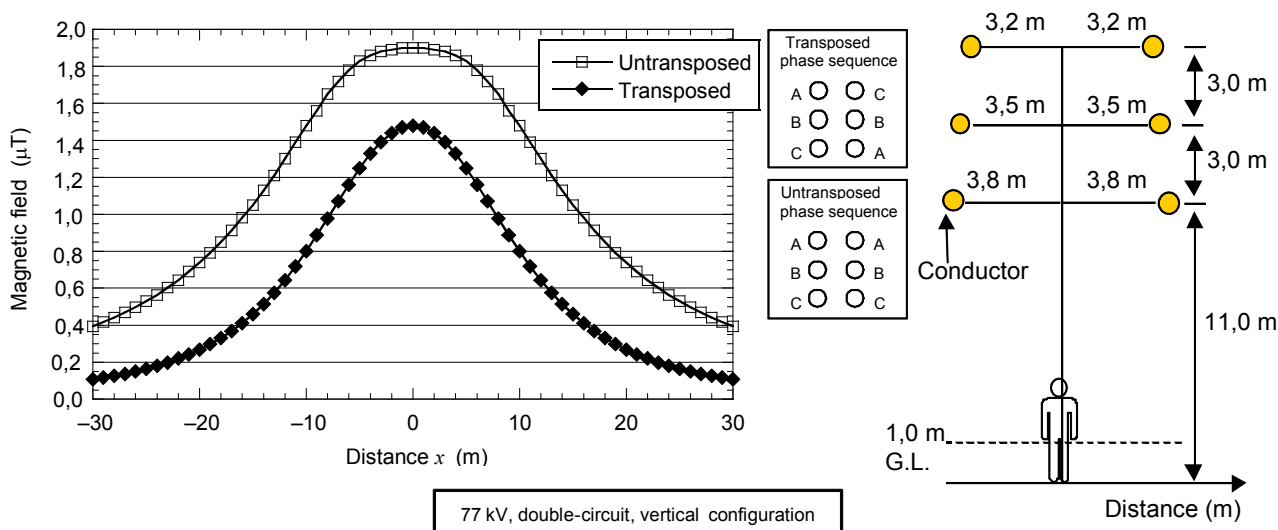
Corrections to the French version appear after the English text.

Les corrections à la version française sont données après le texte anglais.

(<https://standards.iteh.ai>)  
Document Preview

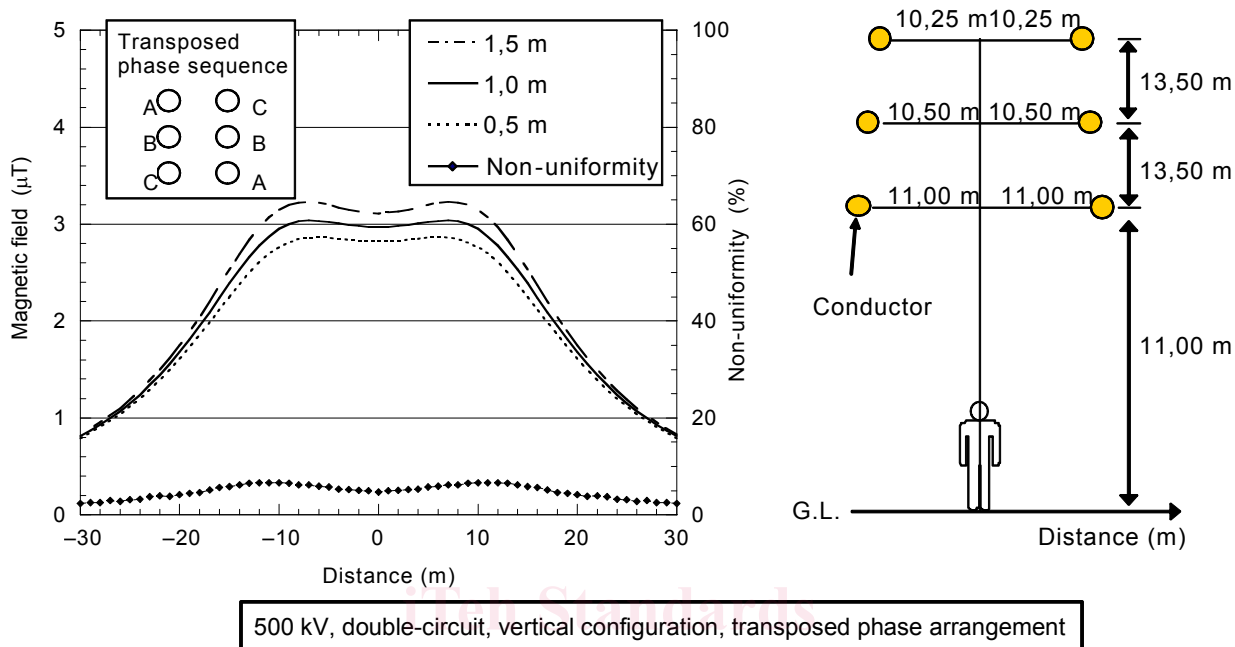
Figure B.1 – Magnetic field levels under a 77 kV overhead transmission line

Replace the existing Figure B.1 with the following:



**Figure B.6 – Magnetic field levels and non-uniformity under a 500 kV overhead transmission line – Effect of separation between conductors**

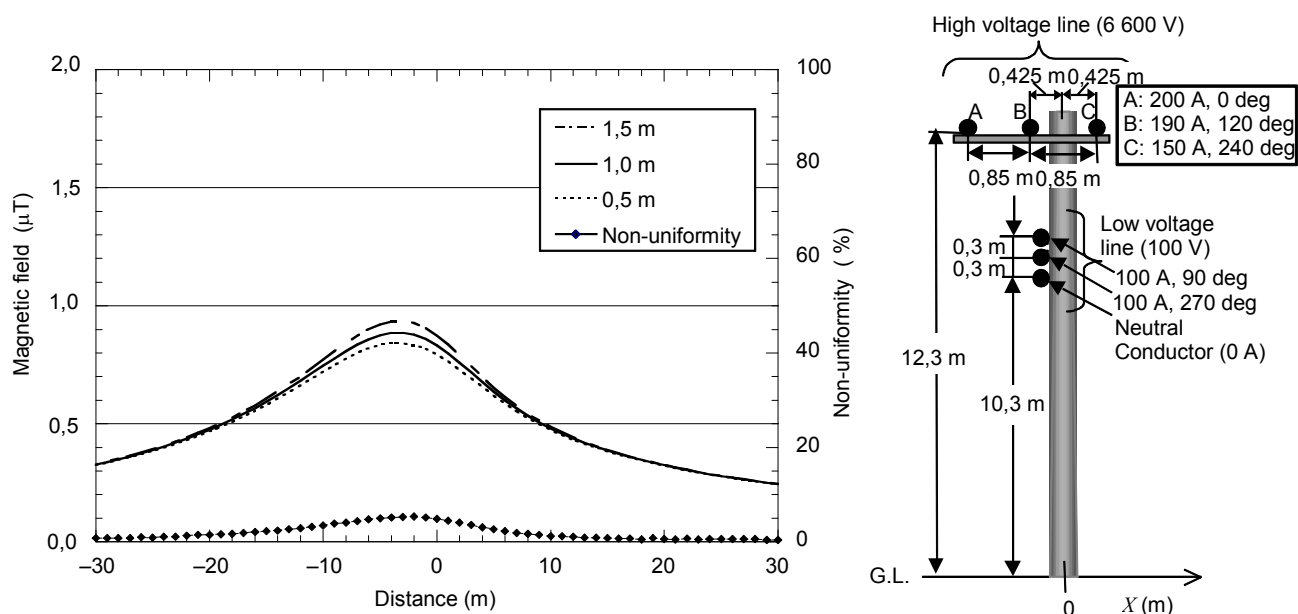
Replace the existing Figure B.6 with the following:



IEC

**Figure B.9 – Magnetic field levels and non-uniformity under an overhead distribution line (6 600 V / 100 V)**

Replace the existing Figure B.9 with the following:



IEC