



**SLOVENSKI STANDARD**  
**SIST ES 204 915-6 V1.1.1:2008**

**01-september-2008**

---

**Odprti dostop do storitve (OSA) - Aplikacijski programski vmesnik (API) - 6. del:  
Lastnost storitvene zmožnosti (SCF) za mobilnost (Parlay 6)**

Open Service Access (OSA) - Application Programming Interface (API) - Part 6: Mobility  
SCF (Parlay 6)

**iTeh STANDARD PREVIEW**  
**(standards.iteh.ai)**

[SIST ES 204 915-6 V1.1.1:2008](https://standards.iteh.ai/catalog/standards/sist/flc68eae-02cf-487d-afc4-9c15270523ee/sist-es-204-915-6-v1-1-1-2008)

[https://standards.iteh.ai/catalog/standards/sist/flc68eae-02cf-487d-afc4-](https://standards.iteh.ai/catalog/standards/sist/flc68eae-02cf-487d-afc4-9c15270523ee/sist-es-204-915-6-v1-1-1-2008)

[9c15270523ee/sist-es-204-915-6-v1-1-1-2008](https://standards.iteh.ai/catalog/standards/sist/flc68eae-02cf-487d-afc4-9c15270523ee/sist-es-204-915-6-v1-1-1-2008)

**Ta slovenski standard je istoveten z: ES 204 915-6 Version 1.1.1**

---

**ICS:**

35.100.01	Medsebojno povezovanje odprtih sistemov na splošno	Open systems interconnection in general
-----------	---	--

**SIST ES 204 915-6 V1.1.1:2008**                      **en**

**iTeh STANDARD PREVIEW**  
**(standards.iteh.ai)**

[SIST ES 204 915-6 V1.1.1:2008](#)

<https://standards.iteh.ai/catalog/standards/sist/flc68eae-02cf-487d-afc4-9c15270523ee/sist-es-204-915-6-v1-1-1-2008>

# ETSI ES 204 915-6 V1.1.1 (2008-05)

ETSI Standard

## Open Service Access (OSA); Application Programming Interface (API); Part 6: Mobility SCF (Parlay 6)



**iTeh STANDARD PREVIEW**  
**(standards.iteh.ai)**

[SIST ES 204 915-6 V1.1.1:2008](https://standards.iteh.ai/catalog/standards/sist/flc68eae-02cf-487d-afc4-9c15270523ee/sist-es-204-915-6-v1-1-1-2008)

<https://standards.iteh.ai/catalog/standards/sist/flc68eae-02cf-487d-afc4-9c15270523ee/sist-es-204-915-6-v1-1-1-2008>



## Reference

---

DES/TISPAN-01032-6-OSA

## Keywords

---

API, IDL, OSA, UML

**ETSI**

650 Route des Lucioles  
F-06921 Sophia Antipolis Cedex - FRANCE

---

Tel.: +33 4 92 94 42 00 Fax: +33 4 93 65 47 16

Siret N° 348 623 562 00017 - NAF 742 C  
Association à but non lucratif enregistrée à la  
Sous-Préfecture de Grasse (06) N° 7803/88

**iTeh STANDARD PREVIEW**  
**(standards.iteh.ai)**

SIST ES 204 915-6 V1.1.1:2008

<https://standards.iteh.ai/catalog/standards/sist/flc68eae-02cf-487d-afc4-9c1527052420/etsi-es-204-915-6-v1-1-1-2008>

**Important notice**

Individual copies of the present document can be downloaded from:

<http://www.etsi.org>

The present document may be made available in more than one electronic version or in print. In any case of existing or perceived difference in contents between such versions, the reference version is the Portable Document Format (PDF). In case of dispute, the reference shall be the printing on ETSI printers of the PDF version kept on a specific network drive within ETSI Secretariat.

Users of the present document should be aware that the document may be subject to revision or change of status. Information on the current status of this and other ETSI documents is available at

<http://portal.etsi.org/tb/status/status.asp>

If you find errors in the present document, please send your comment to one of the following services:

[http://portal.etsi.org/chaicor/ETSI\\_support.asp](http://portal.etsi.org/chaicor/ETSI_support.asp)

---

**Copyright Notification**

No part may be reproduced except as authorized by written permission.  
The copyright and the foregoing restriction extend to reproduction in all media.

© European Telecommunications Standards Institute 2008.

© The Parlay Group 2008.

All rights reserved.

**DECT™**, **PLUGTESTS™**, **UMTS™**, **TIPHON™**, the TIPHON logo and the ETSI logo are Trade Marks of ETSI registered for the benefit of its Members.

**3GPP™** is a Trade Mark of ETSI registered for the benefit of its Members and of the 3GPP Organizational Partners.

# Contents

Intellectual Property Rights .....	8
Foreword.....	8
1 Scope .....	9
2 References .....	9
3 Definitions and abbreviations.....	9
3.1 Definitions .....	9
3.2 Abbreviations .....	9
4 Mobility SCF.....	10
4.1 General requirements on support of methods.....	10
5 Sequence Diagrams .....	11
5.1 User Location Sequence Diagrams.....	11
5.1.1 User Location Interrogation - Triggered Request .....	11
5.1.2 User Location Interrogation - Periodic Request.....	12
5.1.3 User Location Interrogation - Interactive Request.....	13
5.2 User Location Camel Sequence Diagrams .....	14
5.2.1 User Location Camel Interrogation - Triggered Request.....	14
5.2.2 User Location Camel Interrogation - Periodic Request .....	15
5.2.3 User Location Camel Interrogation - Interactive Request .....	16
5.3 User Location Emergency Sequence Diagrams .....	16
5.3.1 Subscription and Network Induced Location Reports .....	16
5.3.2 Network Induced Location Reports .....	18
5.3.3 Interactive Location Request .....	18
5.4 User Status Sequence Diagrams .....	19
5.4.1 Triggered Reporting .....	19
5.4.2 Interactive Request .....	20
5.5 User Binding Sequence Diagrams .....	21
5.5.1 Subscription and Binding Request Notifications .....	21
6 Class Diagrams.....	22
6.1 User Location Class Diagrams .....	22
6.2 User Location Camel Class Diagrams.....	23
6.3 User Location Emergency Class Diagrams .....	23
6.4 User Status Class Diagrams.....	24
6.5 User Binding Class Diagrams .....	25
7 The Service Interface Specifications .....	25
7.1 Interface Specification Format .....	25
7.1.1 Interface Class .....	25
7.1.2 Method descriptions.....	25
7.1.3 Parameter descriptions .....	25
7.1.4 State Model .....	26
7.2 Base Interface .....	26
7.2.1 Interface Class IpInterface .....	26
7.3 Service Interfaces .....	26
7.3.1 Overview .....	26
7.4 Generic Service Interface .....	26
7.4.1 Interface Class IpService .....	26
7.4.1.1 Method setCallback() .....	27
7.4.1.2 Method setCallbackWithSessionID().....	27
8 Mobility Interface Classes.....	27
8.1 User Location Interface Classes .....	27
8.1.1 Interface Class IpUserLocation.....	28
8.1.1.1 Method locationReportReq().....	28

8.1.1.2	Method extendedLocationReportReq()	29
8.1.1.3	Method periodicLocationReportingStartReq()	29
8.1.1.4	Method periodicLocationReportingStop()	30
8.1.1.5	Method getNextPeriodicLocationRequest()	30
8.1.2	Interface Class IpAppUserLocation	30
8.1.2.1	Method locationReportRes()	31
8.1.2.2	Method locationReportErr()	31
8.1.2.3	Method extendedLocationReportRes()	32
8.1.2.4	Method extendedLocationReportErr()	32
8.1.2.5	Method periodicLocationReport()	32
8.1.2.6	Method periodicLocationReportErr()	32
8.1.3	Interface Class IpTriggeredUserLocation	33
8.1.3.1	Method triggeredLocationReportingStartReq()	33
8.1.3.2	Method triggeredLocationReportingStop()	34
8.1.3.3	Method getNextTriggeredLocationRequest()	34
8.1.4	Interface Class IpAppTriggeredUserLocation	34
8.1.4.1	Method triggeredLocationReport()	35
8.1.4.2	Method triggeredLocationReportErr()	35
8.1.4.3	Method triggeredReportingEnded()	35
8.2	User Location Camel Interface Classes	36
8.2.1	Interface Class IpUserLocationCamel	36
8.2.1.1	Method locationReportReq()	36
8.2.1.2	Method periodicLocationReportingStartReq()	37
8.2.1.3	Method periodicLocationReportingStop()	37
8.2.1.4	Method triggeredLocationReportingStartReq()	38
8.2.1.5	Method triggeredLocationReportingStop()	38
8.2.1.6	Method getNextPeriodicLocationRequest()	38
8.2.1.7	Method getNextTriggeredLocationRequest()	39
8.2.2	Interface Class IpAppUserLocationCamel	40
8.2.2.1	Method locationReportRes()	40
8.2.2.2	Method locationReportErr()	40
8.2.2.3	Method periodicLocationReport()	41
8.2.2.4	Method periodicLocationReportErr()	41
8.2.2.5	Method triggeredLocationReport()	41
8.2.2.6	Method triggeredLocationReportErr()	42
8.2.2.7	Method triggeredReportingEnded()	42
8.3	User Location Emergency Interface Classes	42
8.3.1	Interface Class IpUserLocationEmergency	42
8.3.1.1	Method emergencyLocationReportReq()	43
8.3.1.2	Method subscribeEmergencyLocationReports()	43
8.3.1.3	Method unsubscribeEmergencyLocationReports()	44
8.3.2	Interface Class IpAppUserLocationEmergency	44
8.3.2.1	Method emergencyLocationReport()	44
8.3.2.2	Method emergencyLocationReportErr()	45
8.4	User Status Interface Classes	45
8.4.1	Interface Class IpAppUserStatus	45
8.4.1.1	Method statusReportRes()	46
8.4.1.2	Method statusReportErr()	46
8.4.1.3	Method triggeredStatusReport()	47
8.4.1.4	Method triggeredStatusReportErr()	47
8.4.1.5	Method extendedStatusReportRes()	47
8.4.1.6	Method extendedStatusReportErr()	47
8.4.1.7	Method extTriggeredStatusReport()	48
8.4.1.8	Method extTriggeredStatusReportErr()	48
8.4.1.9	Method triggeredReportingEnded()	48
8.4.2	Interface Class IpUserStatus	48
8.4.2.1	Method statusReportReq()	49
8.4.2.2	Method triggeredStatusReportingStartReq()	49
8.4.2.3	Method triggeredStatusReportingStop()	50
8.4.2.4	Method getNextTriggeredStatusRequest()	50
8.4.2.5	Method extendedStatusReportReq()	51
8.4.2.6	Method extTriggeredStatusReportingStartReq()	51

8.4.2.7	Method extTriggeredStatusReportingStop() .....	52
8.5	User Binding Interface Classes .....	52
8.5.1	Interface Class IpUserBinding .....	52
8.5.1.1	Method triggeredBindingRequestNotificationStartReq() .....	52
8.5.1.2	Method triggeredBindingRequestNotificationStop() .....	53
8.5.2	Interface Class IpAppUserBinding .....	53
8.5.2.1	Method triggeredBindingRequestNotification() .....	53
8.5.2.2	Method triggeredBindingRequestNotificationStartErr() .....	54
9	State Transition Diagrams .....	54
9.1	User Location .....	54
9.2	User Location Camel .....	54
9.2.1	State Transition Diagrams for IpUserLocationCamel .....	54
9.2.1.1	Active State .....	55
9.3	User Location Emergency .....	55
9.4	User Status .....	55
9.4.1	State Transition Diagrams for IpUserStatus .....	55
9.4.1.1	Active State .....	55
9.5	User Binding .....	55
10	Service Properties .....	56
10.1	Mobility Properties .....	56
10.1.1	Emergency Application Subtypes .....	56
10.1.2	Value Added Application Subtypes .....	56
10.1.3	PLMN Operator Application Subtypes .....	56
10.1.4	Lawful Intercept Application Subtypes .....	57
10.1.5	Altitude Obtainable .....	57
10.1.6	Location Methods .....	57
10.1.7	Priorities .....	57
10.1.8	Max Interactive Requests .....	57
10.1.9	Max Triggered Users .....	57
10.1.10	Max Periodic Users .....	57
10.1.11	Min Periodic Interval Duration .....	58
10.1.12	Initial Report .....	58
10.1.13	Max Life Time .....	58
10.2	User Location Service Properties .....	58
10.3	User Location Camel Service Properties .....	59
10.4	User Location Emergency Service Properties .....	59
10.5	User Status Service Properties .....	60
11	Data Definitions .....	60
11.1	Common Mobility Data Definitions .....	60
11.1.1	TpGeographicalPosition .....	60
11.1.2	TpLocationPriority .....	61
11.1.3	TpLocationRequest .....	61
11.1.4	TpLocationResponseIndicator .....	62
11.1.5	TpLocationResponseTime .....	62
11.1.6	TpLocationType .....	62
11.1.7	TpLocationUncertaintyShape .....	62
11.1.8	TpMobilityDiagnostic .....	63
11.1.9	TpMobilityError .....	63
11.1.10	TpMobilityStopAssignmentData .....	64
11.1.11	TpMobilityStopScope .....	64
11.1.12	TpTerminalType .....	64
11.2	User Location Data Definitions .....	64
11.2.1	IpUserLocation .....	64
11.2.2	IpUserLocationRef .....	64
11.2.3	IpAppUserLocation .....	64
11.2.4	IpAppUserLocationRef .....	64
11.2.5	IpTriggeredUserLocation .....	64
11.2.6	IpTriggeredUserLocationRef .....	65
11.2.7	IpAppTriggeredUserLocation .....	65
11.2.8	IpAppTriggeredUserLocationRef .....	65

11.2.9	TpUIExtendedData .....	65
11.2.10	TpUIExtendedDataSet .....	65
11.2.11	TpUserLocationExtended .....	65
11.2.12	TpUserLocationExtendedSet .....	65
11.2.13	TpLocationTrigger .....	66
11.2.14	TpLocationTriggerSet .....	66
11.2.15	TpLocationTriggerCriteria .....	66
11.2.16	TpUserLocation .....	66
11.2.17	TpUserLocationSet .....	66
11.2.18	TpTriggeredLocationRequestSetEntry .....	67
11.2.19	TpTriggeredLocationRequestSet .....	67
11.2.20	TpTriggeredLocationRequest .....	67
11.2.21	TpPeriodicLocationRequestSetEntry .....	67
11.2.22	TpPeriodicLocationRequestSet .....	67
11.2.23	TpPeriodicLocationRequest .....	67
11.3	User Location Camel Data Definitions .....	67
11.3.1	IpUserLocationCamel .....	67
11.3.2	IpUserLocationCamelRef .....	68
11.3.3	IpAppUserLocationCamel .....	68
11.3.4	IpAppUserLocationCamelRef .....	68
11.3.5	TpLocationCellIDOrLAI .....	68
11.3.6	TpLocationTriggerCamel .....	68
11.3.7	TpUserLocationCamel .....	69
11.3.8	TpUserLocationCamelSet .....	69
11.4	User Location Emergency Data Definitions .....	69
11.4.1	IpUserLocationEmergency .....	69
11.4.2	IpUserLocationEmergencyRef .....	69
11.4.3	IpAppUserLocationEmergency .....	69
11.4.4	IpAppUserLocationEmergencyRef .....	69
11.4.5	TpIMEI .....	69
11.4.6	TpNaESRD .....	69
11.4.7	TpNaESRK .....	70
11.4.8	TpUserLocationEmergencyRequest .....	70
11.4.9	TpUserLocationEmergency .....	71
11.4.10	TpUserLocationEmergencyTrigger .....	71
11.5	User Status Data Definitions .....	71
11.5.1	IpUserStatus .....	71
11.5.2	IpUserStatusRef .....	71
11.5.3	IpAppUserStatus .....	71
11.5.4	IpAppUserStatusRef .....	71
11.5.5	TpUserStatus .....	72
11.5.6	TpUserStatusSet .....	72
11.5.7	TpUserStatusIndicator .....	72
11.5.8	TpTriggeredStatusRequestSetEntry .....	72
11.5.9	TpTriggeredStatusRequestSet .....	72
11.5.10	TpTriggeredStatusRequest .....	72
11.5.11	TpUserStatusExtended .....	73
11.5.12	TpUserStatusExtendedSet .....	73
11.5.13	TpUserStatusIndicatorExtended .....	73
11.5.14	TpAuthStatusIndicator .....	73
11.5.15	TpUserInfo .....	74
11.5.16	TpNetworkStatusIndicator .....	74
11.5.17	TpAccessTechnology .....	74
11.5.18	TpRoamingStatus .....	74
11.6	User Binding Data Definitions .....	74
11.6.1	TpBindingSet .....	74
11.6.2	TpBindingEntrySet .....	74
11.6.3	TpBindingEntry .....	75
11.6.4	TpBindingEntryType .....	75
11.6.5	TpBindingNotificationCriteriaSet .....	75
11.6.6	TpBindingNotificationCriteria .....	75
11.6.7	TpBindingNotificationCriteriaType .....	75



11.7	Units and Validations of Parameters .....	75
12	Exception Classes .....	76
<b>Annex A (normative):</b>	<b>OMG IDL Description of Mobility SCF .....</b>	<b>77</b>
<b>Annex B (informative):</b>	<b>W3C WSDL Description of Mobility SCF .....</b>	<b>78</b>
<b>Annex C (informative):</b>	<b>Java API Description of the Mobility SCFs .....</b>	<b>79</b>
<b>Annex D (informative):</b>	<b>Contents of 3GPP OSA R7 Mobility .....</b>	<b>80</b>
<b>Annex E (informative):</b>	<b>Description of Mobility SCF for 3GPP2 cdma2000 networks .....</b>	<b>81</b>
E.1	General Exceptions .....	81
E.2	Specific Exceptions .....	81
E.2.1	Clause 1: Scope .....	81
E.2.2	Clause 2: References .....	81
E.2.3	Clause 3: Definitions and abbreviations .....	81
E.2.4	Clause 4: Mobility SCF .....	81
E.2.5	Clause 5: Sequence Diagrams .....	81
E.2.6	Clause 6 Class Diagrams .....	81
E.2.7	Clause 7: The Service Interface Specifications .....	81
E.2.8	Clause 8: Mobility Interface Classes .....	82
E.2.9	Clause 9: State Transition Diagrams .....	82
E.2.10	Clause 10: Service Properties .....	82
E.2.11	Clause 11: Data Definitions .....	82
E.2.12	Clause 12: Exception Classes .....	82
E.2.13	Annex A (normative): OMG IDL Description of Mobility SCF .....	82
E.2.14	Annex B (informative): W3C WSDL Description of Mobility SCF .....	82
E.2.15	Annex C (informative): Java™ API Description of Mobility SCF .....	82
<b>Annex F (informative):</b>	<b>Record of changes .....</b>	<b>83</b>
F.1	Interfaces .....	83
F.1.1	New .....	83
F.1.2	Deprecated .....	83
F.1.3	Removed .....	83
F.2	Methods .....	83
F.2.1	New .....	83
F.2.2	Deprecated .....	83
F.2.3	Modified .....	84
F.2.4	Removed .....	84
F.3	Data Definitions .....	84
F.3.1	New .....	84
F.3.2	Modified .....	84
F.3.3	Removed .....	84
F.4	Service Properties .....	84
F.4.1	New .....	84
F.4.2	Deprecated .....	84
F.4.3	Modified .....	85
F.4.4	Removed .....	85
F.5	Exceptions .....	85
F.5.1	New .....	85
F.5.2	Modified .....	85
F.5.3	Removed .....	85
F.6	Others .....	85
History	.....	86

---

## Intellectual Property Rights

IPRs essential or potentially essential to the present document may have been declared to ETSI. The information pertaining to these essential IPRs, if any, is publicly available for **ETSI members and non-members**, and can be found in ETSI SR 000 314: *"Intellectual Property Rights (IPRs); Essential, or potentially Essential, IPRs notified to ETSI in respect of ETSI standards"*, which is available from the ETSI Secretariat. Latest updates are available on the ETSI Web server (<http://webapp.etsi.org/IPR/home.asp>).

Pursuant to the ETSI IPR Policy, no investigation, including IPR searches, has been carried out by ETSI. No guarantee can be given as to the existence of other IPRs not referenced in ETSI SR 000 314 (or the updates on the ETSI Web server) which are, or may be, or may become, essential to the present document.

---

## Foreword

This ETSI Standard (ES) has been produced by ETSI Technical Committee Telecommunications and Internet converged Services and Protocols for Advanced Networking (TISPAN).

The present document is part 6 of a multi-part deliverable covering Open Service Access (OSA); Application Programming Interface (API), as identified below. The API specification (ES 204 915) is structured in the following parts:

- Part 1: "Overview";
- Part 2: "Common Data Definitions";
- Part 3: "Framework";
- Part 4: "Call Control";
- Part 5: "User Interaction SCF";
- Part 6: "Mobility SCF";**
- Part 7: "Terminal Capabilities SCF";
- Part 8: "Data Session Control SCF";
- Part 9: "Generic Messaging SCF";
- Part 10: "Connectivity Manager SCF";
- Part 11: "Account Management SCF";
- Part 12: "Charging SCF";
- Part 13: "Policy Management SCF";
- Part 14: "Presence and Availability Management SCF";
- Part 15: "Multi-Media Messaging SCF";
- Part 16: "Service Broker SCF".

[SIST ES 204 915-6 V1.1.1:2008](http://standards.iteh.ai/catalog/standards/sist/flc68eae-02cf-487d-afc4-9c15270523ee/sist-es-204-915-6-v1-1-1-2008)

[https://standards.iteh.ai/catalog/standards/sist/flc68eae-02cf-487d-afc4-](https://standards.iteh.ai/catalog/standards/sist/flc68eae-02cf-487d-afc4-9c15270523ee/sist-es-204-915-6-v1-1-1-2008)

[9c15270523ee/sist-es-204-915-6-v1-1-1-2008](https://standards.iteh.ai/catalog/standards/sist/flc68eae-02cf-487d-afc4-9c15270523ee/sist-es-204-915-6-v1-1-1-2008)

The present document has been defined jointly between ETSI, The Parlay Group (<http://www.parlay.org>) and the 3GPP, in co-operation with a number of JAIN™ Community (<http://www.java.sun.com/products/jain>) member companies.

**The present document forms part of the Parlay 6.0 set of specifications.**

**A subset of the present document is in 3GPP TS 29.198-6 V7.0.0 (Release 7).**

---

# 1 Scope

The present document is part 6 of the Stage 3 specification for an Application Programming Interface (API) for Open Service Access (OSA).

The OSA specifications define an architecture that enables application developers to make use of network functionality through an open standardised interface, i.e. the OSA APIs.

The present document specifies the Mobility Service Capability Feature (SCF) aspects of the interface. All aspects of the Mobility SCF are defined here, these being:

- Sequence Diagrams.
- Class Diagrams.
- Interface specification plus detailed method descriptions.
- State Transition diagrams.
- Data Definitions.
- IDL Description of the interfaces.
- WSDL Description of the interfaces
- Reference to the Java™ API description of the interfaces.

The process by which this task is accomplished is through the use of object modelling techniques described by the Unified Modelling Language (UML). **(standards.iteh.ai)**

---

## 2 References

[SIST ES 204 915-6 V1.1.1:2008](http://standards.iteh.ai/catalog/standards/sist/flc68eae-02cf-487d-afc4-9c15270523ee/sist-es-204-915-6-v1-1-1-2008)

[standards.iteh.ai/catalog/standards/sist/flc68eae-02cf-487d-afc4-9c15270523ee/sist-es-204-915-6-v1-1-1-2008](http://standards.iteh.ai/catalog/standards/sist/flc68eae-02cf-487d-afc4-9c15270523ee/sist-es-204-915-6-v1-1-1-2008)

The references listed in clause 2 of ES 204 915-1 contain provisions which, through reference in this text, constitute provisions of the present document.

ETSI ES 204 915-1: "Open Service Access (OSA); Application Programming Interface (API); Part 1: Overview (Parlay 6)".

---

## 3 Definitions and abbreviations

### 3.1 Definitions

For the purposes of the present document, the terms and definitions given in ES 204 915-1 apply.

### 3.2 Abbreviations

For the purposes of the present document, the abbreviations given in ES 204 915-1 apply.

---

## 4 Mobility SCF

The following clauses describe each aspect of the Mobility Service Capability Feature (SCF).

The order is as follows:

- The Sequence diagrams give the reader a practical idea of how each of the SCFs is implemented.
- The Class relationships clause shows how each of the interfaces applicable to the SCF, relate to one another.
- The Interface specification clause describes in detail each of the interfaces shown within the Class diagram part.
- The State Transition Diagrams (STD) show the transition between states in the SCF. The states and transitions are well-defined; either methods specified in the Interface specification or events occurring in the underlying networks cause state transitions.
- The Data Definitions clause shows a detailed expansion of each of the data types associated with the methods within the classes. Note that some data types are used in other methods and classes and are therefore defined within the Common Data types part ES 204 915-2.

### 4.1 General requirements on support of methods

An implementation of this API which supports or implements a method described in the present document, shall support or implement the functionality described for that method, for at least one valid set of values for the parameters of that method.

Where a method is not supported by an implementation of a Service interface, the exception P\_METHOD\_NOT\_SUPPORTED shall be returned to any call of that method.

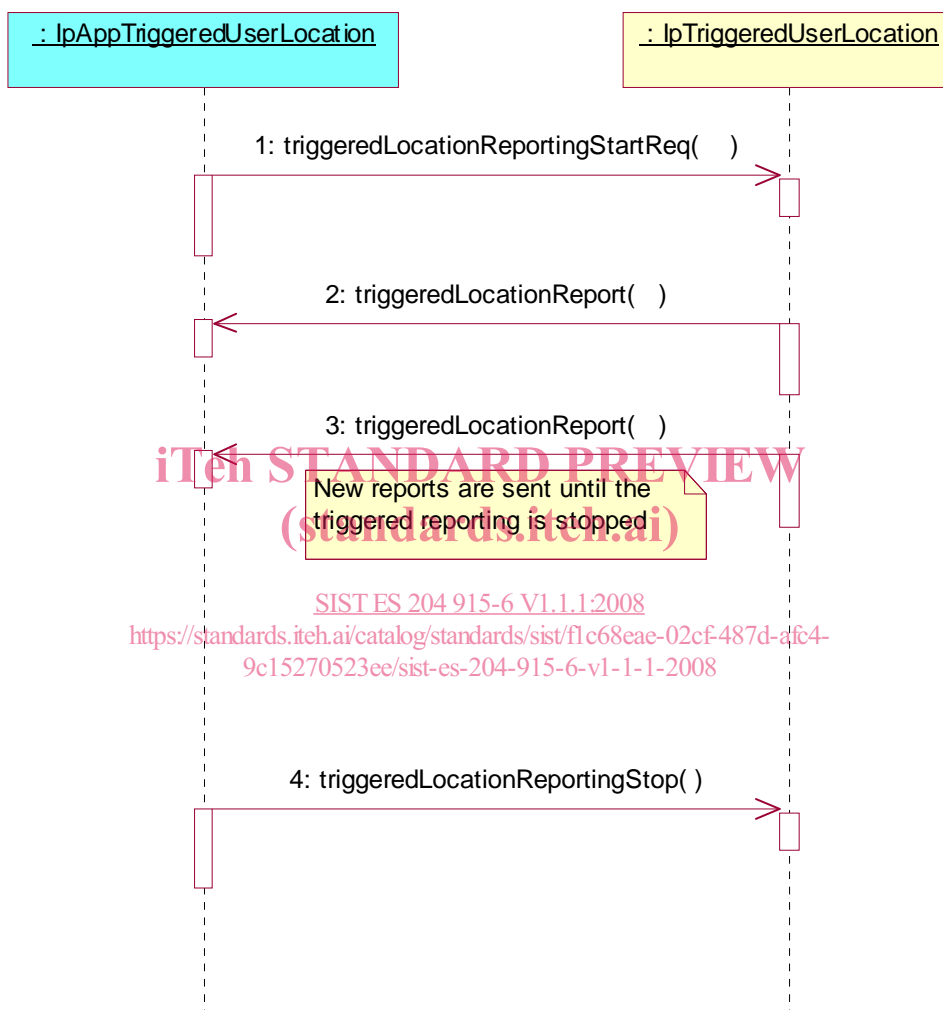
Where a method is not supported by an implementation of an Application interface, a call to that method shall be possible, and no exception shall be returned.

## 5 Sequence Diagrams

### 5.1 User Location Sequence Diagrams

#### 5.1.1 User Location Interrogation - Triggered Request

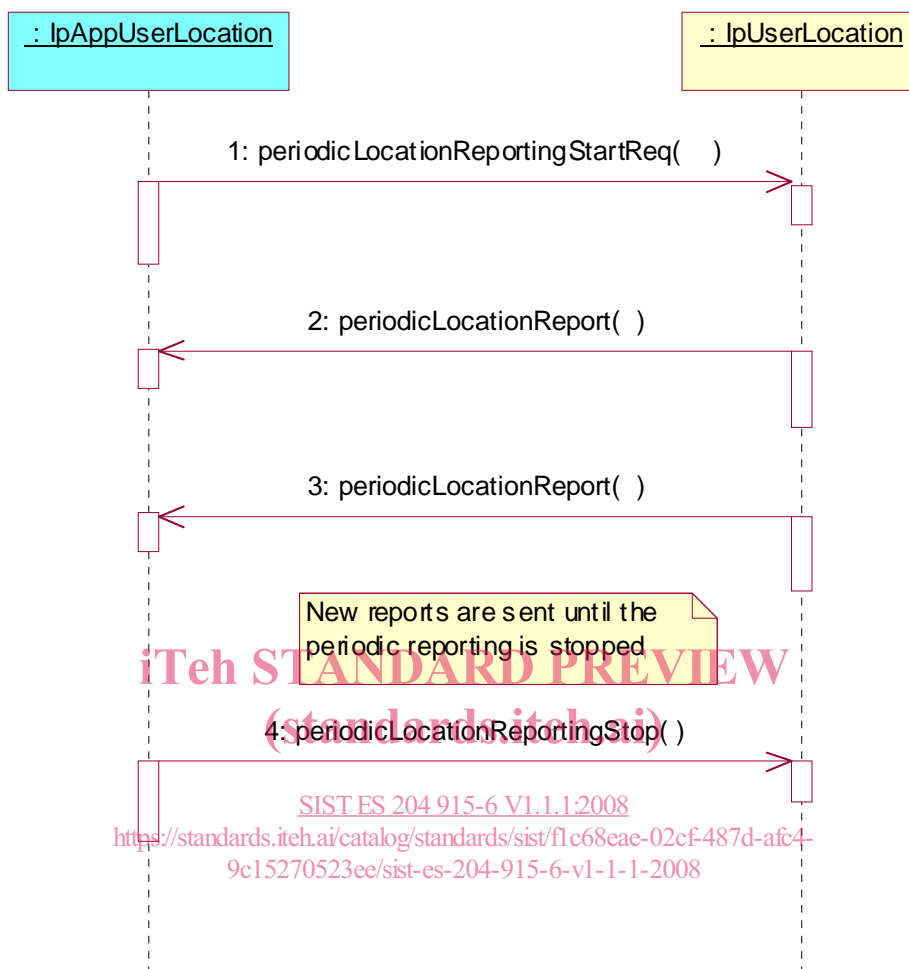
The following sequence diagram shows how an application requests triggered location reports from the User Location service. When users location changes, the service reports this to the application.



- 1: This message is used to start triggered location reporting for one or several users.
- 2: When the trigger condition is fulfilled then this message passes the location of the affected user to its callback object.
- 3: This is repeated until the application stops triggered location reporting (see next message).
- 4: This message is used to stop triggered location reporting.

## 5.1.2 User Location Interrogation - Periodic Request

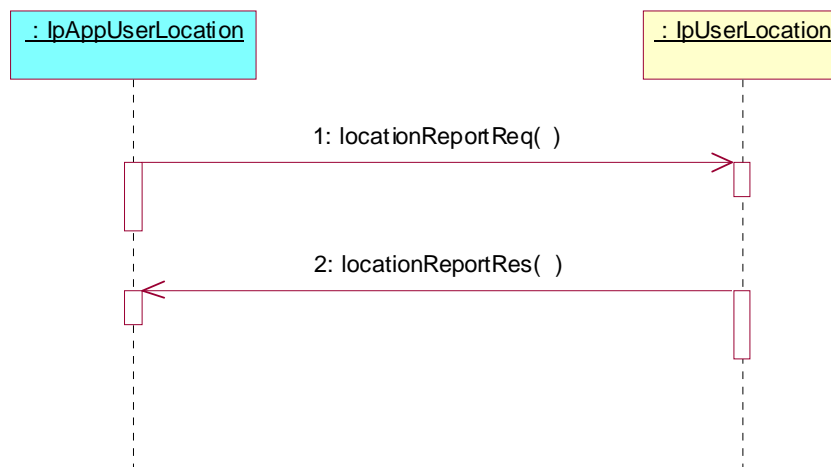
The following sequence diagram shows how an application requests periodic location reports from the User Location service.



- 1: This message is used to start periodic location reporting for one or several users.
- 2: This message passes the location of one or several users to its callback object.
- 3: This message passes the location of one or several users to its callback object.  
This is repeated at regular intervals until the application stops periodic location reporting (see next message).
- 4: This message is used to stop periodic location reporting.

### 5.1.3 User Location Interrogation - Interactive Request

The following sequence diagram shows how an application requests a location report from the User Location service.



- 1: This message is used to request the location of one or several users.
- 2: This message passes the result of the location request for one or several users to its callback object.

**iTeh STANDARD PREVIEW**  
**(standards.iteh.ai)**

[SIST ES 204 915-6 V1.1.1:2008](https://standards.iteh.ai/catalog/standards/sist/flc68eae-02cf-487d-afc4-9c15270523ee/sist-es-204-915-6-v1-1-1-2008)

<https://standards.iteh.ai/catalog/standards/sist/flc68eae-02cf-487d-afc4-9c15270523ee/sist-es-204-915-6-v1-1-1-2008>