

Open Service Access (OSA); Parlay X Web Services; Part 13: Address List Management (Parlay X 3)



iTeh STANDARD PREVIEW
(standards.iteh.ai)

Full standard:
<https://standards.iteh.ai/catalog/standards/sist/fe9ff26-7b94-4e44-af14-7eae9339e62a/etsi-es-202-504-13-v1.1.1-2008-05>



Reference

DES/TISPAN-01034-13-OSA

Keywords

API, OSA, service

ETSI

650 Route des Lucioles
F-06921 Sophia Antipolis Cedex - FRANCE

Tel.: +33 4 92 94 42 00 Fax: +33 4 93 65 47 16

Siret N° 348 623 562 00017 - NAF 742 C
Association à but non lucratif enregistrée à la
Sous-Préfecture de Grasse (06) N° 7803/88

Important notice

Individual copies of the present document can be downloaded from:

<http://www.etsi.org>

The present document may be made available in more than one electronic version or in print. In any case of existing or perceived difference in contents between such versions, the reference version is the Portable Document Format (PDF). In case of dispute, the reference shall be the printing on ETSI printers of the PDF version kept on a specific network drive within ETSI Secretariat.

Users of the present document should be aware that the document may be subject to revision or change of status. Information on the current status of this and other ETSI documents is available at

<http://portal.etsi.org/tb/status/status.asp>

If you find errors in the present document, please send your comment to one of the following services:

http://portal.etsi.org/chaicor/ETSI_support.asp

Copyright Notification

No part may be reproduced except as authorized by written permission.
The copyright and the foregoing restriction extend to reproduction in all media.

© European Telecommunications Standards Institute 2008.

© The Parlay Group 2008.

All rights reserved.

DECT™, **PLUGTESTS™**, **UMTS™**, **TIPHON™**, the TIPHON logo and the ETSI logo are Trade Marks of ETSI registered for the benefit of its Members.

3GPP™ is a Trade Mark of ETSI registered for the benefit of its Members and of the 3GPP Organizational Partners.

Contents

Foreword.....	6
1 Scope	7
2 References	7
2.1 Normative references	7
3 Definitions and abbreviations.....	8
3.1 Definitions	8
3.2 Abbreviations	8
4 Detailed service description	8
4.1 Group URI format	8
4.2 Address list usage in services	9
5 Namespaces	9
6 Sequence diagrams	10
6.1 Manage groups (Create, delete, query, set access and query access)	10
6.2 Manage group members (AddMember, AddMembers, DeleteMember, DeleteMembers, QueryMembers)	11
7 XML Schema data type definition	11
7.1 AccessPermissions structure	11
7.2 AttributeStatus enumeration.....	11
7.3 SimpleAttribute structure	12
8 Web Service interface definition.....	12
8.1 Interface: GroupManagement.....	12
8.1.1 Operation: createGroup.....	12
8.1.1.1 Input message: createGroupRequest	12
8.1.1.2 Output message: createGroupResponse.....	13
8.1.1.3 Referenced faults.....	13
8.1.2 Operation: deleteGroup.....	13
8.1.2.1 Input message: deleteGroupRequest	13
8.1.2.2 Output message: deleteGroupResponse	13
8.1.2.3 Referenced faults.....	13
8.1.3 Operation: queryGroups	13
8.1.3.1 Input message: queryGroupsRequest	14
8.1.3.2 Output message: queryGroupsResponse	14
8.1.3.3 Referenced faults.....	14
8.1.4 Operation: setAccess.....	14
8.1.4.1 Input message: setAccessRequest	15
8.1.4.2 Output message: setAccessResponse	15
8.1.4.3 Referenced faults.....	15
8.1.5 Operation: queryAccess	15
8.1.5.1 Input message: queryAccessRequest.....	15
8.1.5.2 Output message: queryAccessResponse	15
8.1.5.3 Referenced faults.....	15
8.2 Interface: Group	16
8.2.1 Operation: addMember	16
8.2.1.1 Input message: addMemberRequest.....	16
8.2.1.2 Output message: addMemberResponse.....	16
8.2.1.3 Referenced faults.....	16
8.2.2 Operation: addMembers	16
8.2.2.1 Input message: addMembersRequest	16
8.2.2.2 Output message: addMembersResponse	17
8.2.2.3 Referenced faults.....	17
8.2.3 Operation: deleteMember	17
8.2.3.1 Input message: deleteMemberRequest	17

8.2.3.2	Output message: deleteMemberResponse	17
8.2.3.3	Referenced faults	17
8.2.4	Operation: deleteMembers	17
8.2.4.1	Input message: deleteMembersRequest	18
8.2.4.2	Output message: deleteMembersResponse	18
8.2.4.3	Referenced faults	18
8.2.5	Operation: queryMembers	18
8.2.5.1	Input message: queryMembersRequest	18
8.2.5.2	Output message: queryMembersResponse	18
8.2.5.3	Referenced faults	19
8.2.6	Operation: addGroupAttribute	19
8.2.6.1	Input message: addGroupAttributeRequest	19
8.2.6.2	Output message: addGroupAttributeResponse	19
8.2.6.3	Referenced faults	19
8.2.7	Operation: deleteGroupAttribute	19
8.2.7.1	Input message: deleteGroupAttributeRequest	19
8.2.7.2	Output message: deleteGroupAttributeResponse	20
8.2.7.3	Referenced faults	20
8.2.8	Operation: queryGroupAttributes	20
8.2.8.1	Input message: queryGroupAttributesRequest	20
8.2.8.2	Output message: queryGroupAttributesResponse	20
8.2.8.3	Referenced faults	20
8.2.9	Operation: addGroupMemberAttribute	20
8.2.9.1	Input message: addGroupMemberAttributeRequest	20
8.2.9.2	Output message: addGroupMemberAttributeResponse	21
8.2.9.3	Referenced faults	21
8.2.10	Operation: deleteGroupMemberAttribute	21
8.2.10.1	Input message: deleteGroupMemberAttributeRequest	21
8.2.10.2	Output message: deleteGroupMemberAttributeResponse	21
8.2.10.3	Referenced faults	21
8.2.11	Operation: queryGroupMemberAttributes	21
8.2.11.1	Input message: queryGroupMemberAttributesRequest	21
8.2.11.2	Output message: queryGroupMemberAttributesResponse	22
8.2.11.3	Referenced faults	22
8.3	Interface: Member	22
8.3.1	Operation: addMemberAttribute	22
8.3.1.1	Input message: addMemberAttributeRequest	22
8.3.1.2	Output message: addMemberAttributeResponse	22
8.3.1.3	Referenced faults	22
8.3.2	Operation: queryMemberAttributes	23
8.3.2.1	Input message: queryMemberAttributesRequest	23
8.3.2.2	Output message: queryMemberAttributesResponse	23
8.3.2.3	Referenced faults	23
8.3.3	Operation: deleteMemberAttribute	23
8.3.3.1	Input message: deleteMemberAttributeRequest	23
8.3.3.2	Output message: deleteMemberAttributeResponse	23
8.3.3.3	Referenced faults	23
9	Fault definitions	24
9.1	PolicyException	24
9.1.1	POL0210: Too many members in group	24
9.1.2	POL0211: Subgroups not supported	24
9.1.3	POL0212: Group name too long	24
9.1.4	POL0213: Group already exists	24
10	Service policies	24
Annex A (normative):	WSDL for Address List Management	25
Annex B (informative):	Bibliography	26
History		27

Intellectual Property Rights

IPRs essential or potentially essential to the present document may have been declared to ETSI. The information pertaining to these essential IPRs, if any, is publicly available for **ETSI members and non-members**, and can be found in ETSI SR 000 314: *"Intellectual Property Rights (IPRs); Essential, or potentially Essential, IPRs notified to ETSI in respect of ETSI standards"*, which is available from the ETSI Secretariat. Latest updates are available on the ETSI Web server (<http://webapp.etsi.org/IPR/home.asp>).

Pursuant to the ETSI IPR Policy, no investigation, including IPR searches, has been carried out by ETSI. No guarantee can be given as to the existence of other IPRs not referenced in ETSI SR 000 314 (or the updates on the ETSI Web server) which are, or may be, or may become, essential to the present document.

Foreword

This ETSI Standard (ES) has been produced by ETSI Technical Committee Telecommunications and Internet converged Services and Protocols for Advanced Networking (TISPAN).

The present document is part 13 of a multi-part deliverable covering Open Service Access (OSA); Parlay X Web Services, as identified below:

- Part 1: "Common";
- Part 2: "Third Party Call";
- Part 3: "Call Notification";
- Part 4: "Short Messaging";
- Part 5: "Multimedia Messaging";
- Part 6: "Payment";
- Part 7: "Account Management";
- Part 8: "Terminal Status";
- Part 9: "Terminal Location";
- Part 10: "Call Handling";
- Part 11: "Audio Call";
- Part 12: "Multimedia Conference";
- Part 13: "Address List Management";**
- Part 14: "Presence";
- Part 15: "Message Broadcast";
- Part 16: "Geocoding";
- Part 17: "Application-driven Quality of Service (QoS)";
- Part 18: "Device Capabilities and Configuration";
- Part 19: "Multimedia Streaming Control";
- Part 20: "Multimedia Multicast Session Management".

PREVIEW
Full standard:
<https://standards.iteh.ai/catalog/standards/sist/fe9ff26-7f94-4e44-af14-7eae9339e62a/etsi-es-202-504-13-v1.1.1-2008-05>
(standards.iteh.ai)

The present document has been defined jointly between ETSI, The Parlay Group (<http://www.parlay.org>) and the 3GPP.

The present document forms part of the Parlay X 3.0 set of specifications.

The present document is equivalent to 3GPP TS 29.199-13 V7.0.2 (Release 7).

iTeh STANDARD PREVIEW
(standards.iteh.ai)
Full standard:
<https://standards.iteh.ai/catalog/standards/sist/fe99fe26-7f94-4e44-af14-7eae9339e62a/etsi-es-202-504-13-v1.1.1-2008-05>

1 Scope

The present document is part 13 of the Stage 3 Parlay X 3 Web Services specification for Open Service Access (OSA).

The OSA specifications define an architecture that enables application developers to make use of network functionality through an open standardized interface, i.e. the OSA APIs.

The present document specifies the Address List Management Web Service. The following are defined here:

- Name spaces.
- Sequence diagrams.
- Data definitions.
- Interface specification plus detailed method descriptions.
- Fault definitions.
- Service Policies.
- WSDL Description of the interfaces.

2 References

References are either specific (identified by date of publication and/or edition number or version number) or non-specific.

- For a specific reference, subsequent revisions do not apply.
- Non-specific reference may be made only to a complete document or a part thereof and only in the following cases:
 - if it is accepted that it will be possible to use all future changes of the referenced document for the purposes of the referring document;
 - for informative references.

Referenced documents which are not found to be publicly available in the expected location might be found at <http://docbox.etsi.org/Reference>.

For online referenced documents, information sufficient to identify and locate the source shall be provided. Preferably, the primary source of the referenced document should be cited, in order to ensure traceability. Furthermore, the reference should, as far as possible, remain valid for the expected life of the document. The reference shall include the method of access to the referenced document and the full network address, with the same punctuation and use of upper case and lower case letters.

NOTE: While any hyperlinks included in this clause were valid at the time of publication ETSI cannot guarantee their long term validity.

2.1 Normative references

The following referenced documents are indispensable for the application of the present document. For dated references, only the edition cited applies. For non-specific references, the latest edition of the referenced document (including any amendments) applies.

[1] W3C Recommendation (2 May 2001): "XML Schema Part 2: Datatypes".

NOTE: Available at <http://www.w3.org/TR/2001/REC-xmlschema-2-20010502/>.

- [2] ETSI ES 202 504-1: "Open Service Access (OSA); Parlay X Web Services; Part 1: Common (Parlay X 3)".
- [3] IETF RFC 2396: "Uniform Resource Identifiers (URI): Generic Syntax".

3 Definitions and abbreviations

3.1 Definitions

For the purposes of the present document, the terms and definitions given in ES 202 504-1 [2] and the following apply:

application managed group: group created and managed outside of the network, requiring the group members to be passed into the network for processing

group: Container for a set of addresses, it is not an address itself. When a group contain one or more groups, logically the group contains the set of addresses it holds, plus the set of addresses that any contained group holds (including any addresses contained in groups that a contained group holds).

group resolution: When a group is processed by a service, it expands the group (and any nested groups) into a set of addresses. The resulting set of addresses contains no groups, and any duplicate addresses are removed. Thus, a resolved group may be considered an exclusive union of all of its contained members.

network managed group: group created and managed within a network, allowing Web Services to reference the members of a group using the group name

3.2 Abbreviations

For the purposes of the present document, the abbreviations given in ES 202 504-1 [2] apply.

4 Detailed service description

The present document defines two related interfaces, one to manage the groups themselves - creation, deletion, query and access right management. The second interface manages the members within a group, supporting add, delete and query operations.

Addresses are not created using this service, they must already exist.

4.1 Group URI format

A group URI is consistent with the style defined in RFC 2396 [3], supporting the following URI style which is used in schemes such as sip and mailto:

scheme:dept1294@mydivision.mycompany.serviceprovider.com

The group URI consists of the following discrete elements:

Scheme: selected by the provider of the group URI.

Group name: following the conventions of RFC 2396 [3].

Suffix: may be added by Service Provider (if allowed by creation operation) to create a unique name when the Prefix + Group name already exists.

Sub-domain: defined by the requester, this is contained within the domain provided by the service provider.

Domain: defined by the Service Provider, and cannot be specified by the application.

This definition of a group URI enables flexibility on the part of the Service Provider and the Requester, while ensuring unique groups are created and providing transparency of implementation of group storage.

The following are some group URI examples.

- sip:salesteam@sales.acme.anytelco.com
- sip:salesteam1@sales.acme.anytelco.com
- mailto:fieldservice@cityofaustin.anytelco.com
- group:mailroom@bldg001.acme.anytelco.com

These examples show (1)(2) use of prefix to create unique names, (1)(3) use of different defined schemes, and (4) use of a service provider defined scheme.

4.2 Address list usage in services

When a service has a requirement to support groups of address lists, it may satisfy this requirement by utilizing network managed groups. The group URI is passed to the service, and this group URI is resolved to the set of URIs contained within the group. If one or more group URIs are provided in a set of URIs to a service, the service will replace each group URI with its set of contained URIs, and the service processing will apply to the unique union of URIs generated.

If supported by the service policy, zero or more of the set of URIs contained within a group may be themselves group URIs, which would also be resolved. Thus, in this case, the list of URIs that the service would process would be the union of individual URIs (as a set with no duplicates).

Unless specifically defined in the semantics of a service, the expected semantic for the results of a service operation will be presented as the results for the set of URIs as processed (the union of non-group and group provided URIs), without group URIs included in the result. This eliminates a variety of complexity issues including duplicate URIs in multiple groups and the differences between a group URI and a URI referring to an endpoint.

5 Namespaces

The GroupManagement interface uses the namespace:

`http://www.csapi.org/wsdl/parlayx/group_mgmt/v3_0`

The Group interface uses the namespace:

`http://www.csapi.org/wsdl/parlayx/group/v3_0`

The GroupMember interface uses the namespace:

`http://www.csapi.org/wsdl/parlayx/group_member/v3_0`

The data types are defined in the namespace:

`http://www.csapi.org/schema/parlayx/group/v3_0`

The "xsd" namespace is used in the present document to refer to the XML Schema data types defined in XML Schema [1]. The use of the name "xsd" is not semantically significant.

6 Sequence diagrams

6.1 Manage groups (Create, delete, query, set access and query access)

Pattern: Request / Response.

The group management functions are shown in this diagram, showing a sequence including the creation of a group, setting access permissions to the group, querying those permissions, query of groups and finally deletion of a group.

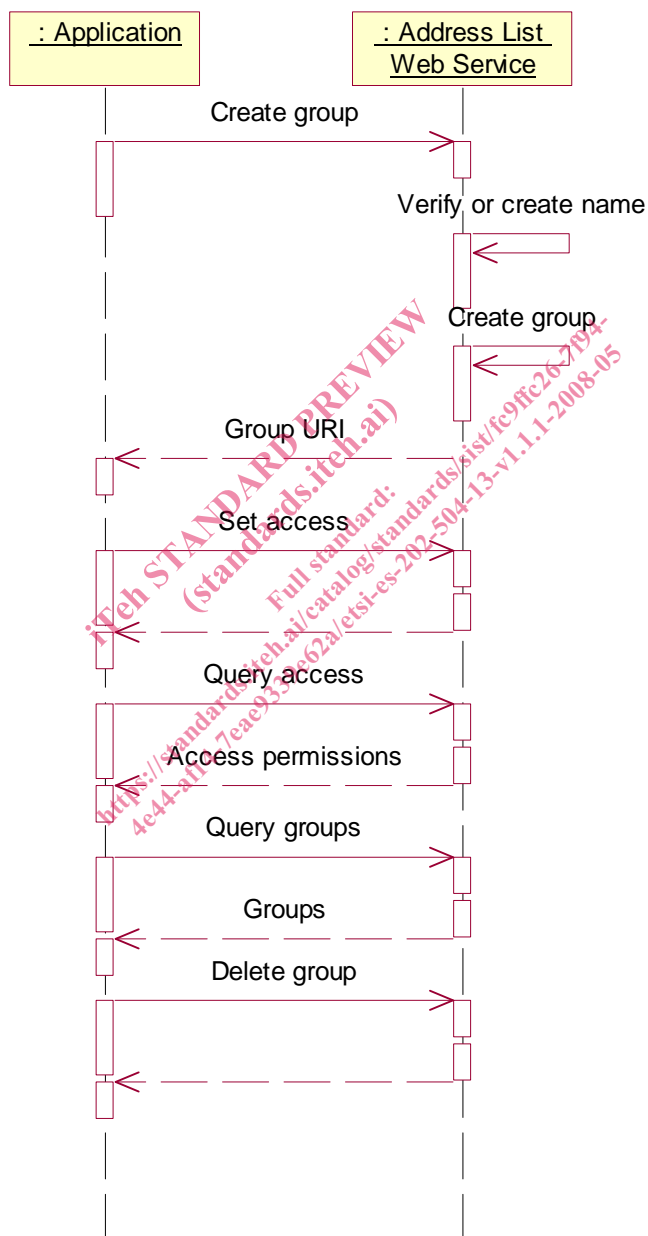


Figure 1