



Designation: C 1138 – 97

## Standard Test Method for Abrasion Resistance of Concrete (Underwater Method)<sup>1</sup>

This standard is issued under the fixed designation C 1138; the number immediately following the designation indicates the year of original adoption or, in the case of revision, the year of last revision. A number in parentheses indicates the year of last approval. A superscript epsilon ( $\epsilon$ ) indicates an editorial change since the last revision or reapproval.

### 1. Scope

1.1 This test method covers a procedure for determining the relative resistance of concrete (including concrete overlays and impregnated concrete) to abrasion under water (see **Note 1**). This procedure simulates the abrasive action of waterborne particles (silt, sand, gravel, and other solids).

**NOTE 1**—Other procedures are available for measuring abrasion resistance of concrete surfaces not under water. These include Test Methods **C 418**, **C 779**, and **C 944**.

1.2 The values stated in acceptable metric units are to be regarded as the standard.

1.3 *This standard does not purport to address all of the safety concerns, if any, associated with its use. It is the responsibility of the user of this standard to establish appropriate safety and health practices and determine the applicability of regulatory limitations prior to use.*

### 2. Referenced Documents

2.1 *ASTM Standards:*

**C 42** Test Method for Obtaining and Testing Drilled Cores and Sawed Beams of Concrete<sup>2</sup>

**C 418** Test Method for Abrasion Resistance of Concrete by Sandblasting<sup>2</sup>

**C 642** Test Method for Specific Gravity, Absorption, and Voids in Hardened Concrete<sup>2</sup>

**C 670** Practice for Preparing Precision and Bias Statements for Test Methods for Construction Materials<sup>2</sup>

**C 779** Test Method for Abrasion Resistance of Horizontal Concrete Surfaces<sup>2</sup>

**C 944** Test Method for Abrasion Resistance of Concrete or Mortar Surfaces by the Rotating Cutter Method<sup>2</sup>

**E 18** Test Methods for Rockwell Hardness and Rockwell Superficial Hardness of Metallic Materials<sup>3</sup>

### 3. Significance and Use

3.1 This test method is intended to qualitatively simulate the behavior of swirling water containing suspended and trans-

ported solid objects that produce abrasion of concrete and cause potholes and related effects.

3.2 This test method should provide a relative evaluation of the resistance of concrete to such action.

3.3 The results are expected to be useful in selection of materials, mixtures, and construction practices for use where such action is to be expected.

3.4 The test method is not intended to provide a quantitative measurement of the length of service that may be expected from a specific concrete.

### 4. Apparatus

4.1 *Rotating Device*—A drill press or similar device with a chuck capable of holding and rotating the agitation paddle under test conditions at a speed of  $1200 \pm 100$  rpm shall be used.

4.2 *Test Container*—A steel pipe,  $305 \pm 6$ -mm ( $12 \pm 1/4$ -in.) inside diameter by  $450 \pm 25$ -mm ( $18 \pm 1$ -in.) high, fitted with a watertight steel base shall be used (see **Fig. 1**).

4.3 *Agitation Paddle*—The agitation paddle shall be as shown in **Fig. 2**.<sup>4</sup>

4.4 *Abrasive Charges*—Seventy grade 1000 chrome steel grinding balls with nominal sizes as specified in **Table 1** shall be used. The steel of which the balls are made shall have a Rockwell C-scale hardness of  $65 \pm 5$  as determined by Test Methods **E 18**. The balls shall have a smooth texture and no apparent mold seam (see **Note 2**).<sup>5</sup>

**NOTE 2**—An abrasive charge meeting the requirements of **Table 1** will have a mass of approximately 1530 to 1900 g (3.8 to 4.2 lb). When the mass of the charge approaches the lower limit, replace the undersize or underweight balls not complying with **Table 1**.

4.5 *Scales*—A platform scale having a capacity of at least 45 kg (100 lb) or more and accurate to within at least 5.0 g (0.01 lb) at any point within the range used in this test shall be used. The scale shall be equipped with a suitable apparatus for suspending the sample in its container in water from the center of the weighing platform.

4.6 *Weighing Basket*—A wire basket or other suitable support shall be provided for weighing the specimen in water. The

<sup>1</sup> This standard is under the jurisdiction of ASTM Committee C-9 on Concrete and Concrete Aggregates and is the direct responsibility of Subcommittee C09.62 on Abrasion Testing.

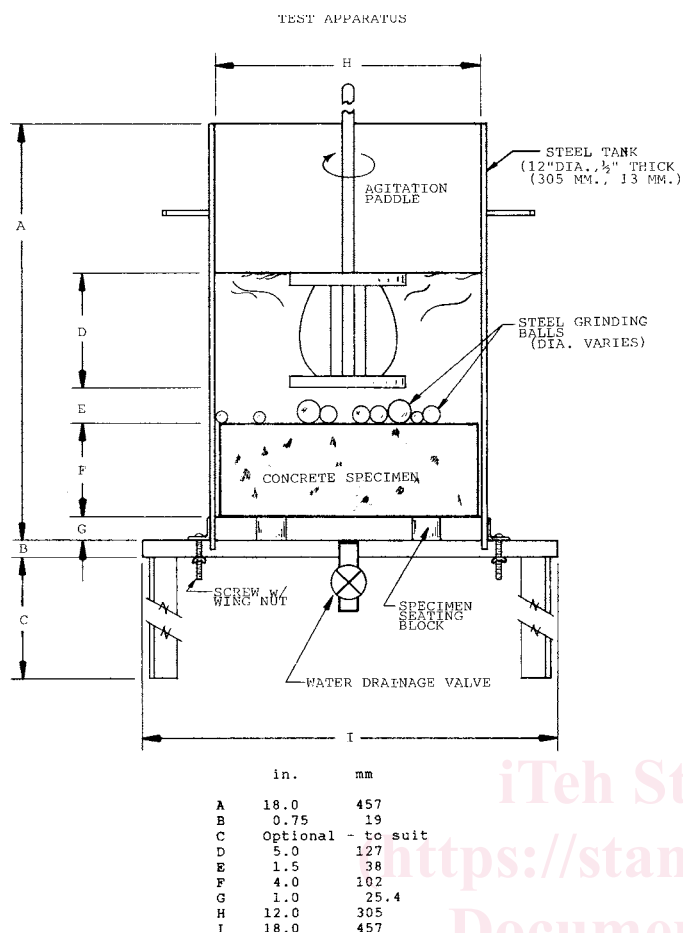
Current edition approved Jan. 10, 1997. Published March 1997. Originally published as C 1138 – 89. Last previous edition C 1138 – 89.

<sup>2</sup> *Annual Book of ASTM Standards*, Vol 04.02.

<sup>3</sup> *Annual Book of ASTM Standards*, Vol 03.01.

<sup>4</sup> A suitable paddle is Model PS-21, manufactured by the Jiffy Mixer Company, Inc., 1342-3H Bell Ave., Tustin, CA 92680-6467.

<sup>5</sup> A suitable source of grinding balls is the Hoover-Universal Company, Route 10, Box 558, Cumming, GA 30130.



**FIG. 1 Test Apparatus**

weighing basket shall be constructed to prevent entrapping air when it and the specimen are submerged.

4.7 *Water Tank*—A suitable watertight tank into which the basket and the specimen can be suspended below the scale shall be furnished.

4.8 *Seating Block*—A minimum of three steel blocks 25 by 25 by 25 mm (1 by 1 by 1 in.) shall be used to support the specimen.

**5. Test Specimens**

5.1 The test specimen shall be cylindrical in shape, having a diameter approximately 6-mm (¼-in.) less than that of the inside diameter of the test container and a height of 100 ± 13 mm (4 ± ½ in.). It may be molded from freshly mixed concrete or cored from hardened concrete (see Note 3). Cores shall be taken in accordance with Methods C 42.

NOTE 3—Specimens should be tested at an age appropriate for the material being evaluated. Most testing done to date has been done at 28 days. Concretes containing pozzolans should be tested at an age that allows development of appropriate strength. Toppings and impregnated concretes should be tested at an age appropriate for the material and in compliance with the manufacturer’s recommendations. The appropriate testing age may also depend upon when the concrete will be put into service.

5.2 If the specimen has a membrane curing compound on the surface, remove it completely by steel wire brushing prior to the soaking period.

5.3 Soak the specimen in lime-saturated water or in the water to which the concrete shall be subjected in service for a minimum of 48 h prior to testing.

5.4 Determine the average diameter of the top surface of the specimen to be tested to the nearest 2 mm (⅛ in.) by averaging two diameters measured at right angles to each other. This average diameter shall be used in calculating the top surface area.

5.5 Surface dry the specimen. Determine and record the mass in air to the nearest 25.0 g (0.05 lb). Determine and record the apparent mass of the specimen immersed in water to the nearest 25.0 g (0.05 lb). The procedure of Test Method C 642 shall be followed using water at 23 ± 1.7°C (73.4 ± 3°F) having a density of 997 ± 2 kg/m³. Remove all entrapped air by shaking the specimen while it is immersed in the water for weighing.

**6. Procedure**

6.1 Place the specimen in the test container with the surface to be tested facing up and the seating blocks in place.

6.2 Position the specimen so that its surface is normal to the drill shaft and the center of the specimen coincides with the drill shaft.

6.3 Mount the agitation paddle in the drill press. The bottom of the agitation paddle shall be 38 ± 5 mm (1½ ± ¼ in.) above the surface of the specimen.

6.4 Determine and record the mass of the abrasive charge to the nearest 10 g (0.02 lb). Place it on the surface of the specimen and add water of the same type as used in the saturation period to 165 ± 5 mm (6½ ± ¼ in.) above the surface of the specimen.

6.5 Start the paddle rotating and check that the paddle is rotating at the required speed with the paddle immersed.

6.6 Remove the specimen from the test container at the end of every 12 h of operation. Flush off the abraded material and surface dry. Determine and record the mass of the specimen in air and in water.

6.7 The standard test shall consist of six 12-h periods for a total of 72 h (see Note 4).

NOTE 4—Testing totalling 24 h generally produces significant abrasion in most concrete surfaces, but it is recommended to extend the period of simulation if more severe abrasion is desired. Additional testing time may be required for concrete that is highly resistant to abrasion.

**7. Calculation**

7.1 Calculate the abrasion loss as follows:

7.1.1 Calculate the volume of the specimen at any time as follows:

$$V_t = \frac{W_{air} - W_{water}}{G_w} \tag{1}$$

where:

- $V_t$  = volume of the specimen at the desired time, m³,
- $W_{air}$  = mass of the specimen in air at the desired time, kg,
- $W_{water}$  = apparent mass of the specimen in water at the desired time, kg, and
- $G_w$  = unit weight of water kg/m³.