



SLOVENSKI STANDARD
SIST EN 71-1:2000/A10:2005
01-januar-2005

JUfbcgh][fU '!%XY. AY Ubg_Y]b`Zn] UbY`Ugfbcgj]!`8cdc`b]c`5%\$

Safety of toys - Part 1: Mechanical and physical properties

Sicherheit von Spielzeug - Teil 1: Mechanische und physikalische Eigenschaften

Sécurité des jouets - Partie 1: Propriétés mécaniques et physiques

Ta slovenski standard je istoveten z: **EN 71-1:1998/A10:2004**

[SIST EN 71-1:2000/A10:2005](https://standards.iteh.ai/catalog/standards/sist/d2e074d8-c223-48c8-abed-1eaf1d71253c/sist-en-71-1-2000-a10-2005)

<https://standards.iteh.ai/catalog/standards/sist/d2e074d8-c223-48c8-abed-1eaf1d71253c/sist-en-71-1-2000-a10-2005>

ICS:

97.200.50 Q|æ^ Toys

SIST EN 71-1:2000/A10:2005 en,fr,de

iTeh STANDARD PREVIEW
(standards.iteh.ai)

[SIST EN 71-1:2000/A10:2005](https://standards.iteh.ai/catalog/standards/sist/d2e074d8-c223-48c8-abed-1eafd71253c/sist-en-71-1-2000-a10-2005)

<https://standards.iteh.ai/catalog/standards/sist/d2e074d8-c223-48c8-abed-1eafd71253c/sist-en-71-1-2000-a10-2005>

EUROPEAN STANDARD
NORME EUROPÉENNE
EUROPÄISCHE NORM

EN 71-1:1998/A10

October 2004

ICS 97.200.50

English version

Safety of toys - Part 1: Mechanical and physical properties

Sécurité des jouets - Partie 1: Propriétés mécaniques et
physiques

Sicherheit von Spielzeug - Teil 1: Mechanische und
physikalische Eigenschaften

This amendment A10 modifies the European Standard EN 71-1:1998; it was approved by CEN on 16 September 2004.

CEN members are bound to comply with the CEN/CENELEC Internal Regulations which stipulate the conditions for inclusion of this amendment into the relevant national standard without any alteration. Up-to-date lists and bibliographical references concerning such national standards may be obtained on application to the Central Secretariat or to any CEN member.

This amendment exists in three official versions (English, French, German). A version in any other language made by translation under the responsibility of a CEN member into its own language and notified to the Central Secretariat has the same status as the official versions.

CEN members are the national standards bodies of Austria, Belgium, Cyprus, Czech Republic, Denmark, Estonia, Finland, France, Germany, Greece, Hungary, Iceland, Ireland, Italy, Latvia, Lithuania, Luxembourg, Malta, Netherlands, Norway, Poland, Portugal, Slovakia, Slovenia, Spain, Sweden, Switzerland and United Kingdom.

(standards.iteh.ai)

SIST EN 71-1:2000/A10:2005

<https://standards.iteh.ai/catalog/standards/sist/d2e074d8-c223-48c8-abed-1eafd71253c/sist-en-71-1-2000-a10-2005>



EUROPEAN COMMITTEE FOR STANDARDIZATION
COMITÉ EUROPÉEN DE NORMALISATION
EUROPÄISCHES KOMITEE FÜR NORMUNG

Management Centre: rue de Stassart, 36 B-1050 Brussels

EN 71-1:1998/A10:2004 (E)

Foreword

This document (EN 71-1:1998/A10:2004) has been prepared by Technical Committee CEN/TC 52 "Safety of toys", the secretariat of which is held by DS.

This European Standard shall be given the status of a national standard, either by publication of an identical text or by endorsement, at the latest by April 2005, and conflicting national standards shall be withdrawn at the latest by April 2005.

According to the CEN/CENELEC Internal Regulations, the national standards organizations of the following countries are bound to implement this European Standard: Austria, Belgium, Cyprus, Czech Republic, Denmark, Estonia, Finland, France, Germany, Greece, Hungary, Iceland, Ireland, Italy, Latvia, Lithuania, Luxembourg, Malta, Netherlands, Norway, Poland, Portugal, Slovakia, Slovenia, Spain, Sweden, Switzerland and United Kingdom.

iTeh STANDARD PREVIEW (standards.iteh.ai)

[SIST EN 71-1:2000/A10:2005](https://standards.iteh.ai/catalog/standards/sist/d2e074d8-c223-48c8-abed-1eaf1d71253c/sist-en-71-1-2000-a10-2005)

<https://standards.iteh.ai/catalog/standards/sist/d2e074d8-c223-48c8-abed-1eaf1d71253c/sist-en-71-1-2000-a10-2005>

Add a new requirement in EN 71-1:1998

5.13 Hemispheric shaped toys (see C.50)

These requirements apply to cup-shaped, bowl-shaped or one half of an egg-shaped toys having a nearly round, oval or elliptical opening with the minor and major outer diameters between 64 mm and 102 mm, a volume of less than 177 ml and a depth greater than 13 mm.

The following toys are exempt from these requirements:

- objects intended for drinking (e.g. tea set cups);
- containers that must be airtight so the contents can maintain their functional integrity (e.g. modelling clay containers);
- components of larger products (e.g. bowl-shaped smoke stack that is permanently attached to a toy train or a swimming pool that is moulded into a larger toy playscape) that do not become detached when tested according to 8.3 (torque test), 8.4 (tension test), 8.5 (drop test), 8.7 (impact test) and 8.8 (compression test) and for glued wooden toys 8.9 (soaking test). For large and bulky toys the drop test above is substituted by 8.6 (tip over test).;
- containers that are part of the packaging intended to be discarded once the toy is removed from the packaging.

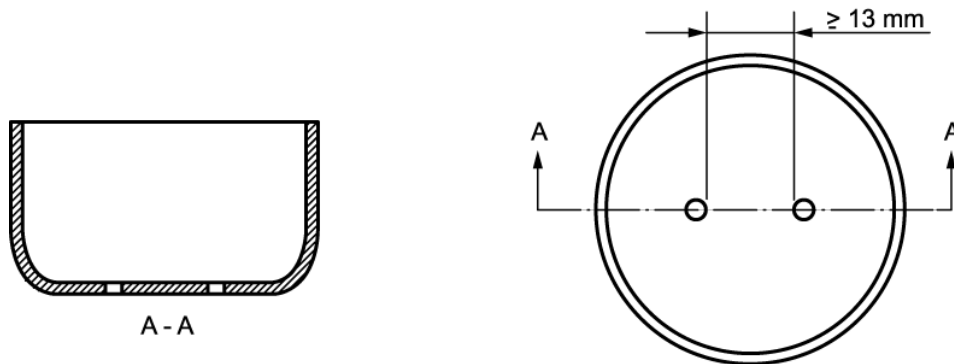
Cup-shaped, bowl-shaped or one half of an egg-shaped toys shall as a minimum comply with at least one of the requirements in items a), b), c) or d) below:

- a) The object shall have at least two openings that are at least 13 mm from the rim as measured along the outside contour;
 - if the openings are placed in the base of the object, at least two of the openings must be at least 13 mm apart. (See Figure 5.13 a);
 - if the openings are not placed in the base of the object, at least two of the openings shall be placed at least 30 degrees but not more than 150 degrees apart. (See Figure 5.13 b);
- b) The plane of the open end of the cup shape shall be interrupted at the centre by some type of divider that extends to 6 mm or less from the plane of the opening. An example of an interruption includes a rib through the centre of the opening. (See Figure 5.13 c);
- c) The object shall have three openings located between 6 mm and 13 mm from the rim and at least 100 degrees apart as measured along the outside contour;
- d) The object shall have a repeating scalloped edge pattern around the entire rim. The maximum distance between centrelines of adjacent peaks shall be 25 mm and the minimum depth shall be 6 mm. (See Figure 5.13 d).

For purposes of these requirements an opening is defined as a hole of any shape with a minor dimension of 2 mm.

The requirements above apply before and after testing according to 8.3 (torque test), 8.4 (tension test), 8.5 (drop test), 8.7 (impact test) and 8.8 (compression test) and for glued wooden toys 8.9 (soaking test). For large and bulky toys the drop test above is substituted by 8.6 (tip over test).;

EN 71-1:1998/A10:2004 (E)

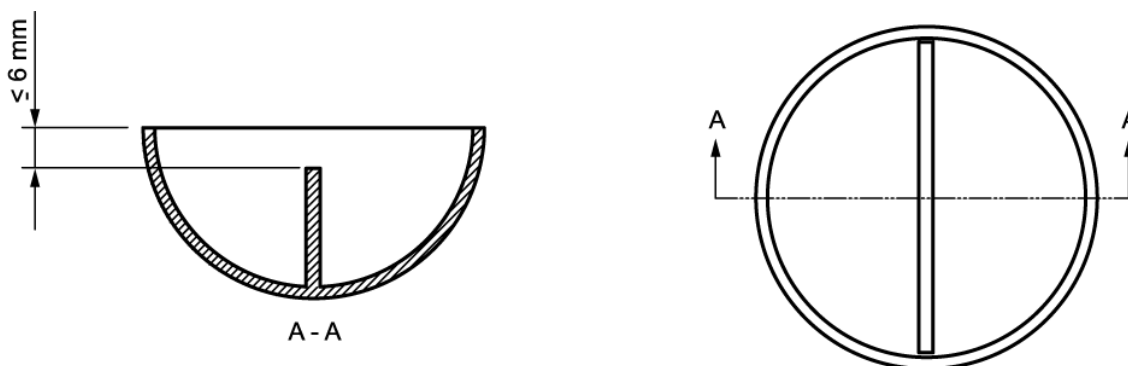


a) Openings in the base of bowl



SIST EN 71-1:2000/A10:2005
<https://standards.iteh.ai/catalog/standards/sist/d2e074d8-c223-48c8-abed-1eaf1d71253c/sist-en-71-1-2000-a10-2005>

b) Opening Placement



c) Rib through cup centre



d) Scalloped edge pattern

Figure 5.13 – Examples of hemispheric shaped toys

C.50 Hemispheric shaped toys

The purpose of this requirement is to address suffocation risks presented by certain shapes (e.g. cup-shaped, bowl shaped or one half of an egg-shaped toys) that can be placed over a young child's nose and mouth forming an airtight seal. The available data indicate that the children involved in fatalities were between the ages of 4 months and 24 months while near misses involved children up to 36 months of age.

The US Consumer Product Safety Commission staff has analyzed the incident data and concluded the following regarding the dimensions of the containers involved in these incidents:

(standards.iteh.ai)

Table C.1 - Dimensions

Hemispherical toys	Ranges
Diameter Range	69 mm – 97 mm
Depth Range	41 mm – 51 mm
Volume Range	100 ml – 177 ml

The work group observed children with cups in the diameter range of 51 mm to 114 mm. Based on these observations and the dimensions of the cups involved in the incidents, it was concluded that the size range of interest is 64 mm to 102 mm.

The two hole positions described in Figure 5.13 a) and Figure 5.13 b) are intended to minimize the likelihood that both holes could be blocked simultaneously.

The size of the opening is specified to prevent a vacuum from forming. The openings are not intended as breathing holes.