



Standard Test Method for Evaluation of Engine Oils for Roller Follower Wear in Light-Duty Diesel Engine¹

This standard is issued under the fixed designation D 5966; the number immediately following the designation indicates the year of original adoption or, in the case of revision, the year of last revision. A number in parentheses indicates the year of last reapproval. A superscript epsilon (ϵ) indicates an editorial change since the last revision or reapproval.

INTRODUCTION

This test method is continually undergoing changes to reflect refinements in procedure, obsolescence of parts or reagents. These changes or updates, as well as general information regarding the test method, are issued as information letters by the ASTM Test Monitoring Center (TMC). Copies of information letters pertaining to the test method may be obtained by contacting the ASTM Test Monitoring Center.²

The test method can be used by any properly equipped laboratory, without assistance of anyone not associated with that laboratory. However, TMC provides reference oils and an assessment of the test results obtained on those oils by the laboratory. By this means, the laboratory will know whether their use of the test method gives results statistically similar to those obtained by other laboratories. Furthermore, various agencies require that a laboratory utilize the TMC services in seeking qualification of oils against specifications. For example, the U.S. Army imposes such a requirement, in connection with several military lubricant specifications.

Accordingly, this test method is written for use by laboratories which utilize the TMC services. Laboratories that choose not to use these services may simply ignore those portions of the test procedure which refer to the TMC.

1. Scope

1.1 This engine lubricant test method is commonly referred to as the Roller Follower Wear Test. Its primary result, roller follower shaft wear in the hydraulic valve lifter assembly, has been correlated with vehicles used in stop-and-go delivery service prior to 1993.³ It is one of the test methods required to evaluate lubricants intended to satisfy the API CG-4 performance category. This test has also been referred to as the 6.2 L Test.

1.2 The values of units used in this test method are stated in either inch-pound units or SI units and are to be regarded separately as the standard.

1.3 *This standard does not purport to address all of the safety concerns, if any, associated with its use. It is the responsibility of the user of this standard to establish appropriate safety and health practices and determine the applicability of regulatory limitations prior to use.*

appropriate safety and health practices and determine the applicability of regulatory limitations prior to use.

1.4 Table of Contents:

	Section
Scope	1
Referenced Documents	2
Terminology	3
Summary of Test Method	4
Significance and Use	5
Reagents	7
Guidelines on Substitution	7.1
Apparatus	6
Preparation of Apparatus	8
New Engine Preparation	8.1
Installation of Auxiliary Systems	8.2
Test Procedure	9
Description of Test Segments and Organization	9.1
Engine Parts Replacement	9.2
Engine Starting Procedure	9.3
Normal Engine Shutdown Procedure	9.4
Emergency Shutdown Procedure	9.5
Unscheduled Shutdown and Downtime	9.6
New Engine Break-In	9.7
Pretest Procedure	9.8
Fifty-Hour Steady State Test	9.9
Periodic Measurements	9.10
Oil Sampling and Oil Addition Procedures	9.11
End of Test Procedure	9.12
Calculation and Interpretation of Test Results	10
Environment of Parts Measurement Area	10.1
Roller Follower Shaft Wear Measurements	10.2

¹ This test method is under the jurisdiction of ASTM Committee D02 on Petroleum Products and Lubricants and is the direct responsibility of Subcommittee D02.B0 on Automotive Lubricants.

Current edition approved Nov. 10, 2002. Published February 2003. Originally approved in 1996. Last previous edition approved in 1999 as D 5966-99.

² ASTM Test Monitoring Center, 6555 Penn Ave., Pittsburgh, PA 15206-4489. This edition incorporated revisions contained in all Information Letters through No. 01-1.

³ Supporting data have been filed at ASTM International Headquarters and may be obtained by requesting Research Report RR: D02-1218.

Oil Analysis	10.3
Assessment of Test Validity	10.4
Final Test Report	11
Reporting Calibration Test Results	11.1
Report Forms	11.2
Interim Non-Valid Calibration Test Summary	11.3
Severity Adjustments	11.4
Precision and Bias	12
Reference Oil Precision	12.1
Bias	12.3
Keywords	13
ANNEXES	
Guidelines for Test Part Substitution or Modifications	A1
Guidelines for Units and Specification Formats	A2
Detailed Specifications of Apparatus	A3
Calibration	A4
Final Report Forms	A5
Illustrations	A6
Kinematic Viscosity @ 100°C Procedure for Test Samples	A7
Enhanced Gravimetric Analysis TGA Procedure	A8
Sources of Materials and Information	A9
Roller Follower Wear Test (RFWT) Data Dictionary	A10
APPENDIXES	
Ranges for Howell LSRD-4 Reference Fuel	X1
Diagnostic Data Review	X2

2. Referenced Documents

2.1 ASTM Standards:

- D 86 Test Method for Distillation of Petroleum Products at Atmospheric Pressure⁴
- D 92 Test Method for Flash and Fire Points by Cleveland Open Cup⁴
- D 97 Test Method for Pour Point of Petroleum Products⁴
- D 130 Test Method for Detection of Copper Corrosion from Petroleum Products by the Copper Strip Tarnish Test⁴
- D 235 Specification for Mineral Spirits (Petroleum Spirits) (Hydrocarbon Dry Cleaning Solvent)⁵
- D 287 Test Method for API Gravity of Crude Petroleum and Petroleum Products (Hydrometer Method)⁴
- D 445** Test Method for Kinematic Viscosity of Transparent and Opaque Liquids (the Calculation of Dynamic Viscosity)⁴
- D 446** Specifications and Operating Instructions for Glass Capillary Kinematic Viscometer⁴
- D 482 Test Method for Ash from Petroleum Products⁴
- D 524 Test Method for Ramsbottom Carbon Residue of Petroleum Products⁴
- D 613 Test Method for Cetane Number of Diesel Fuel Oil⁶
- D 1319 Test Method for Hydrocarbon Types in Liquid Petroleum Products by Fluorescent Indicator Adsorption⁴
- D 2500 Test Method for Cloud Point of Petroleum Products⁴
- D 2622 Test Method for Sulfur in Petroleum Products by Wavelength Dispersive X-Ray Fluorescence Spectrometry⁴
- D 2709 Test Method for Water and Sediment in Middle Distillate Fuels by Centrifuge⁴
- D 4175 Terminology Relating to Petroleum, Petroleum Products, and Lubricants⁷
- D 4485** Specification for Performance of Engine Oils⁷

- D 4737 Test Method for Calculated Cetane Index by Four Variable Equation⁷
- D 5185** Test Method for Determination of Additive Elements, Wear Metals, and Contaminants in Used Lubricating Oils and Determination of Selected Elements in Base Oils by Inductively Coupled Plasma Atomic Emission Spectrometry⁷
- D 5186 Test Method for Determination of Aromatic Content of Diesel Fuels and Aviation Turbine Fuels by Supercritical Fluid Chromatography⁷
- D 5302 Test Method for Evaluation of Automotive Engine Oils for Inhibition of Deposit Formation and Wear in a Spark-Ignition Internal Combustion Engine Fueled with Gasoline and Operated Under Low-Temperature, Light-Duty Conditions⁷
- D 5844 Test Method for Evaluation of Automotive Engine Oils for Inhibition of Rusting (Sequence IID)⁸
- E 29** Practice for Using Significant Digits in Test Data to Determine Conformance With Specifications⁹
- E 344 Terminology Relating to Thermometry and Hydrometry¹⁰
- 2.2 *Society of Automotive Engineers (SAE)*:¹¹
 - SAE J183 Engine Oil Performance and Engine Service Classification
 - SAE J726 Air Cleaner Test Code (Includes Piezometer Ring Specifications)
- 2.3 *American Petroleum Institute (API)*:¹²
 - API 1509 Oil Licensing and Certification System
- 2.4 *American National Standards Institute (ANSI)*:¹³
 - MC96.1 Temperature Measurement Thermocouples

3. Terminology

3.1 Definitions:

- 3.1.1 *blowby, n*—in internal combustion engines, the combustion products and unburned air-and-fuel mixture that enter the crankcase. **D 5302**
- 3.1.2 *BTDC, adj*—abbreviation for Before Top Dead Center, used with the degree symbol to indicate the angular position of the crankshaft relative to its position at the point of uppermost travel of the piston in the cylinder.
- 3.1.3 *calibrate, v*—to determine the indication or output of a measuring device with respect to that of a standard. **E 344**
- 3.1.4 *candidate oil, n*—an oil which is intended to have the performance characteristics necessary to satisfy a specification and is tested against that specification. **D 5844**
- 3.1.5 *engine oil, n*—a liquid that reduces friction or wear, or both, between the moving parts within an engine; removes heat, particularly from the underside of pistons; and serves as a combustion gas sealant for piston rings.

⁸ Annual Book of ASTM Standards, Vol 05.03.

⁹ Annual Book of ASTM Standards, Vol 14.02.

¹⁰ Annual Book of ASTM Standards, Vol 14.03.

¹¹ These standards available only in SAE Handbook, Vol 3 or SAE Fuels and Lubricants Standards Manual HS23 from Society of Automotive Engineers, Inc., 400 Commonwealth Dr., Warrendale, PA 15096-0001.

¹² Available from American Petroleum Institute, 1220 L Street NW, Washington, DC 12005-4018.

¹³ Available from American National Standards Institute (ANSI), 25 W. 43rd St., 4th Floor, New York, NY 10036.

⁴ Annual Book of ASTM Standards, Vol 05.01.

⁵ Annual Book of ASTM Standards, Vol 06.04.

⁶ Annual Book of ASTM Standards, Vol 05.04.

⁷ Annual Book of ASTM Standards, Vol 05.02.

3.1.5.1 *Discussion*—It may contain additives to enhance certain properties. Inhibition of engine rusting, deposit formation, valve train wear, oil oxidation and foaming are examples.

Subcommittee B Glossary¹⁴

3.1.6 *light-duty, adj*— in internal combustion engine operation, characterized by average speeds, power output, and internal temperatures that are generally much lower than the potential maximums. **D 4485**

3.1.7 *light-duty engine, n*— in internal combustion engine types, one that is designed to be normally operated at substantially less than its peak output. **D 4485**

3.1.8 *lubricant, n*—any material interposed between two surfaces that reduces friction or wear, or both, between them.

Subcommittee B Glossary¹⁴

3.1.9 *lubricating oil, n*—a liquid lubricant, usually comprising several ingredients, including a major portion of base oil and minor portions of various additives.

Subcommittee B Glossary¹⁴

3.1.10 *reference oil, n*—an oil of known performance characteristics, used as a basis for comparison.

3.1.10.1 *Discussion*—Reference oils are used to calibrate testing facilities, to compare the performance of other oils, or to evaluate other materials (such as seals) that interact with oils. **D 5844**

3.1.11 *used oil, n*—any oil that has been in a piece of equipment (for example, an engine, gearbox, transformer, or turbine), whether operated or not. **D 4175**

3.1.12 *wear, n*—the loss of material from, or reduction of material on, a surface.

3.1.12.1 *Discussion*—Wear generally occurs between two surfaces moving relative to each other, and is the result of mechanical or chemical action or a combination of both. **D 5302**

4. Summary of Test Method

4.1 A pre-assembled GM V8 diesel test engine is installed on a test stand and operated for 50 h.

4.2 The test engine operating conditions are generally more extreme than typical service operating conditions. These conditions provide high soot loading and accelerated roller follower shaft wear while maintaining correlation with wear levels found in the field.³

4.3 At the end of the test, the performance of the engine oil is determined by measuring the level of wear on the roller follower shafts.

5. Significance and Use

5.1 This test method is used to determine the ability of an engine crankcase oil to control wear that can develop in the field under low to moderate engine speeds and heavy engine loads. Side-by-side comparisons of two or more oils in delivery van fleets were used to demonstrate the field performance of various oils.³ The specific operating conditions of this test method were developed to provide correlation with the field performance of these oils.

5.2 This test method, along with other test methods, defines the minimum performance level of the Category API CG-4 for heavy duty diesel engine lubricants. Passing limits for this category are included in Specification **D 4485**.

5.3 The design of the engine used in this test method is not representative of all modern diesel engines. This factor, along with the specific operating conditions used to accelerate wear, shall be considered when extrapolating test results.

6. Apparatus

6.1 A listing and complete description of all apparatus used in the test is found in **Annex A3**. Information concerning procurement of apparatus can be found in **Appendix X1**.

7. Reagents

7.1 *Guidelines on Substitution*—No substitutions for the reagents listed in **7.1.1-7.1.3** are allowed.

7.1.1 *Aliphatic Naphtha*, acceptable from any supplier. (**Warning**—Flammable. Health hazard. Use adequate safety provisions with all solvents and cleansers.)

7.1.2 *Engine Coolant*—The engine coolant is a solution of demineralized water which has less than 0.03 g/kg dissolved solids and an ethylene glycol based anti-freeze mixed at the following concentration—70 % antifreeze and 30 % water by volume.

7.1.2.1 *Demineralized Water*, is used as a generic term to describe *pure* water. Deionized or distilled water may also be used as long as the total dissolved solids content is less than 0.03 g/kg.

7.1.3 *Fuel*—Approximately 600 L of Howell LSRD-4 reference diesel fuel are required for each test.¹⁵ (**Warning**—Combustible. Health hazard. Use adequate safety provisions.)

7.1.3.1 *Fuel Batch Analysis*—Each fuel shipment does not need to be analyzed upon receipt from the supplier. However, laboratories are responsible for periodic checks for contamination. Any analysis results for parameters tested should be within the tolerances shown on **Fig. A5.20**. If any results fall outside the tolerances shown on **Fig. A5.20**, the laboratory should contact the Test Monitoring Center (TMC)² for help in resolving the problem.

7.1.3.2 *Fuel Batch Storage*—The fuel should be stored in accordance with all applicable safety and environmental regulations.

7.1.4 *Break-In Oil*—Approximately 8 kg of break-in oil are necessary for new engine break-in. Break-in oil is defined as any SAE 15W-40, API CG-4 quality oil.

7.1.5 *Non-Reference Test Oil*—A minimum of 20 kg of new oil are required to complete the test. A 25-kg sample of new oil is normally provided to allow for inadvertent losses.

7.1.6 *Calibration Test Oil*—A 22-kg sample of reference oil is provided by the TMC for each calibration test.

8. Preparation of Apparatus

8.1 *New Engine Preparation*—Paragraphs **8.1.1** through **8.1.8** describe preparations that are only performed on a new engine before conducting the new engine break-in.

¹⁴ Available from Mr. J. L. Newcombe, Exxon Chemical Co., 26777 Central Park Blvd., Ste 300, Southfield, MI 48076.

¹⁵ Available from Howell Hydrocarbon Inc., Ten Lamar, Ste 1800, Houston, TX 77002.

8.1.1 *Engine Front Cover Installation*— Install the front cover to the front of the engine block with the gasket supplied and torque all bolts to 40 N·m.

8.1.2 *Oil Sump Drain Location*—Install a drain in the sump as described in A3.9.3.7.

8.1.3 *Glow Plug Replacement*—Remove the glow plugs and install 27-in. dry seal NPT socket pressure plugs. Torque the plugs to 20 N·m.

8.1.4 *Cold Start Solenoid Disablement*— Disconnect the cold start solenoid.

8.1.5 *Exhaust Manifolds*—Check the flanges to ensure the gasket surfaces are not distorted. Install the required water-cooled exhaust manifolds with the discharge toward the rear of the engine. Use the special studs supplied with the manifolds, and torque the studs to 30 N·m.

8.1.6 *Rocker Arm Cover Preparation*—Install a new seal to each rocker arm cover lid. Install a new gasket on each rocker arm cover mounting flange. Install the rocker arm covers, but not the lids, at this time.

NOTE 1—The rocker arm cover lid is removed after each test. An adhesive material can be used to adhere the gasket to the rocker arm cover lid. Installation of a small amount of petroleum jelly to the sealing surface facilitates removal and extends the life of the seal.

8.1.7 *Injection Pump Position Verification*—Verify the dynamic timing marks on the engine and injection pump flanges are properly aligned. The mark is a line scribed across the top of the pump mounting flange and the injection pump gear drive cover flange.

8.2 *Installation of Auxiliary Systems and Miscellaneous Components:*

8.2.1 *Exhaust Back Pressure Transducer Lines*—Check the lines leading to the pressure transducer. Remove any obstructions in the lines.

8.2.2 *Crankcase Ventilation System*—Clean the oil separator. Install the crankcase vent tube to the atmosphere by way of the oil separator on the rear of the right rocker arm cover as shown in Fig. A3.3.

8.2.3 *External Oil System Installation*— Configure the external oil system according to the schematic diagram shown in Fig. A3.2. Ensure all hoses and fittings on the oil heat exchanger are properly connected and secure.

8.2.3.1 Brass and copper fittings may influence used oil wear metals analyses and shall not be used in the external oil system.

8.2.4 *Engine Cooling System Installation*— A suggested engine cooling system is shown in Fig. A3.4.

8.2.4.1 Remove the thermostat.

8.2.5 *Engine Coolant System Charge*—Charge the engine with coolant solution mixed to the concentration shown in 7.1.2.

8.2.6 *Intake Air System Installation*— Install the intake air horn and Piezometer ring.

8.2.7 *Exhaust System Installation*—Install the exhaust manifolds and the exhaust manifold discharge flanges.

9. Test Procedure

9.1 *Description of Test Segments and Organization of Test Procedure Sections:*

9.1.1 *New Engine Break-in*—A break-in is only performed on a new engine. A break-in is not performed before each steady state test. New engine break-in is detailed in 9.7.

9.1.2 *Pretest Procedure*—The pretest segment is used to flush previous oil from the test engine and is performed before each 50-h wear test. Pretest segment is detailed in 9.8.

9.1.3 *Fifty-Hour Steady State Test*—The actual test used to measure roller follower shaft wear is a 50-h test run at steady state conditions shown in Table 1. Paragraph 9.9 describes the operation of the 50-h test.

9.1.4 *Engine Starting and Shutdown Procedures*— Paragraphs 9.3-9.5 describe the engine starting and shutdown procedures.

9.2 *Engine Parts Replacement*—The roller followers cannot be replaced during the test. Record the circumstances involved in any other engine parts replacement on the Supplemental Operational Data pages.

9.3 *Engine Starting Procedure*—The following procedure shall be used each time the engine is started:

9.3.1 Turn on the safety circuits and the engine coolant pump.

9.3.2 Crank the engine.

9.3.3 The control systems shall allow the engine to start within 10 s. (Warning—Verify that the oil sump and cooling system have been charged before starting the engine.) (Warning—Verify there is an adequate supply of cooling water to the exhaust manifolds and external heat exchangers. Without sufficient coolant flow, the engine and exhaust manifolds will overheat and sustain serious damage.) (Warning—Do not spray starting fluids into the intake-air horn to assist engine starting.) (Warning—Do not crank the engine excessively. If starting difficulties are encountered, perform diagnostics to determine why engine will not start. Excessive cranking times may promote increased engine wear.)

9.3.4 Operate the engine speed at 1000 r/min and no load 5 min.

9.3.5 After 5 min, increase the load to 7.5 kW and maintain the engine speed at 1000 r/min. Maintain this condition for 15 min. The test time begins 10 min after the completion of the 15 min warm-up period.

TABLE 1 Steady State Operating Conditions

Parameter	Specification
Speed, r/min	1000 ± 5
Torque, N·m	Record
Power, kW	Record (target range, 30–34 kW)
Fuel rate, kg/h (6.2 L engine)	9.00 ± 0.10
Fuel rate, kg/h (6.5 L engine)	9.40 ± 0.10
Fuel temperature, °C	35.0 ± 2.0
Coolant inlet temperature, °C	Record
Coolant outlet temperature, °C	120.0 ± 2.0
Coolant flow rate, L/min	Record (target range, 53–61 L/min)
Coolant pressure, kPa	Record (target range, 93–107 kPa)
Main oil gallery temperature, °C	120.0 ± 2.0
Intake air temperature, °C	32.0 ± 2.0
Exhaust temperature, °C	Record
Oil sump temperature, °C	Record
Intake air pressure, kPa	97.0 ± 1.0
Crankcase pressure, kPa	Record
Exhaust back pressure, kPa	103.0 ± 1.0

9.3.6 During the 10 min after the warm-up, maintain the engine speed at 1000 r/min and increase the load until the fuel consumption rate meets the specification shown in **Table 1**. Maintain these conditions for the duration of the test.

9.4 *Normal Engine Shutdown Procedure*— Unless an emergency condition exists, the following procedure shall be followed each time the engine is shutdown.

9.4.1 Reduce the engine load to 0 kW.

9.4.2 Operate the engine for 5 min.

9.4.3 Stop the engine.

9.5 *Emergency Shutdown Procedure*—If an emergency condition exists, shut off the fuel supply and stop the engine.

9.6 *Unscheduled Shutdowns and Downtime*— The test can be shut down at any convenient time to perform unscheduled maintenance. Report all unscheduled shutdowns on **Fig. A5.19** of the final test report.

9.6.1 *Resumption of Test Time After a Shutdown*—After a shutdown, test time begins 10 min after the completion of the 15 min period at 7.5 kW in **9.3.5**.

9.7 *New Engine Break-in*—The break-in provides an opportunity to stabilize a new engine and is only performed after a new engine has been installed on the test stand and prior to a reference test. The break-in is not performed before each 50-h non-reference test.

9.7.1 The break-in is comprised of two stages—a stepped, steady state stage and a cyclic stage. **Table 2** describes the steady state stage. The cyclic portion is described in **Table 3** (see **9.7.3.3** and **9.7.3.4**).

9.7.1.1 Use the lifters which came in the assembled engine for the engine break-in.

9.7.2 *New Engine Break-in Oil Charge*:

9.7.2.1 Install a new AC PF-35 oil filter.

9.7.2.2 Connect the flush system outlet to the oil cooler.

9.7.2.3 Use the flush system to charge 6.5 kg of break-in oil into the engine.

NOTE 2—Break-in oil is defined in **7.1.5**.

9.7.2.4 Remove the flush system outlet hose from the oil cooler and cap the oil cooler fitting.

9.7.3 *New Engine Break-in Operating Procedure*:

9.7.3.1 Start the engine according to **9.3**.

9.7.3.2 Operate the engine according to the steady state sequence shown in **Table 2**.

9.7.3.3 Operate the engine according to the cyclic sequence shown in **Table 3**. Except for speed and load, use the targets shown in **Table 4** for all other controller set points. Total cycle length is 30 min (a cycle includes Steps 2 through 17). Each transition is 30 s in length. Steps 2 through 11 are 60 s each; Steps 12 through 17 are 120 s each. Repeat the cycle 100 times to complete the 50-h cyclic portion of the break-in.

TABLE 2 Break-in Sequence, Steady State Stage^A

Step	Engine Speed, r/min	Engine Load, N-m	Time, min
1	1000	120	30
2	2000	140	30
3	3000	180	30
4	3600	200	30
5	3800	0	30
6	3000	full power	30

^ASee **Table 4** for remaining steady state break-in specifications.

TABLE 3 Break-in Sequence, Cyclic Stage

Step	Engine Speed, r/min	Engine Load, N-m	Stage Length, min
1	650	idle	
2	max. governed (3800)	no load	1
3	3600	full (310)	1
4	2800	full (350)	1
5	2000	full (370)	1
6	1450	220	1
7	max. governed (3800)	no load	1
8	3600	full (310)	1
9	2800	full (350)	1
10	2000	full (370)	1
11	1450	220	1
12	max. governed (3800)	no load	2
13	3600	full (310)	2
14	2800	full (350)	2
15	2000	full (370)	2
16	1450	220	2
17	650	idle	2

TABLE 4 Break-in Operating Targets, Steady State and Cyclic Stages^A

Controlled Parameter	Specification
Engine speed, r/min	see Tables 1 and 2
Torque, N-m	see Tables 1 and 2
Power, kW	Record
Fuel temperature, °C	35 ± 2
Coolant inlet temperature, °C	Record
Coolant outlet temperature, °C	120 ± 2
Coolant flow rate, L/min	190 ± 8
Coolant pressure, kPa	100 ± 7
Main oil gallery pressure, kPa	Record
Main oil gallery temperature, °C	120 ± 2
Intake air temperature, °C	32 ± 2
Exhaust temperature, °C	Record
Oil sump temperature, °C	Record

^AThe retention of break-in data is at the discretion of the laboratory.

9.7.3.4 The engine will not maintain specifications for some of the parameters shown in **Table 4** especially during the cyclic stage. Controller set points should be maintained at the specifications shown in **Table 4** for all parameters except engine speed and load.

9.7.3.5 The engine will consume oil during the cyclic portion of the break-in. An engine will normally consume 1 L of oil/16 h of break-in operation. Approximately 1 L of oil should be added during Step 17 at 17 h and 34 h.

9.8 *Pretest Procedure*—The engine pretest procedure allows an opportunity to charge the crankcase with test oil, verify injection timing, check the crankcase dipstick level and install test lifters (roller followers). Complete the pretest procedure before running each 50-h steady state reference or non-reference test.

9.8.1 The laboratory ambient atmosphere shall be reasonably free of contaminants. Temperature and humidity level of the operating area are not specified. Divert air from fans or ventilation systems away from the test engine.

9.8.2 *Initial Test Oil Flush and Lifter Installation*:

9.8.2.1 Weigh and install a new AC PF-35 oil filter.

9.8.2.2 Connect the flush system inlet to the fitting on the bottom of the oil pan.

9.8.2.3 Connect the flush system outlet to the external oil cooler inlet.

9.8.2.4 Charge 6.0 kg of test oil into the engine. Record the actual weight of the oil charge.

9.8.2.5 Circulate the oil with the flush system for 15 min.

9.8.2.6 Drain and weigh the oil from the engine. Remove, weigh, and discard the oil filter.

9.8.2.7 Install a new set of hydraulic lifters in the engine position noted on the roller follower shaft. Orient the hydraulic lifters so that the oil hole faces the front of the engine.

NOTE 3—A description of the markings on the end of the roller follower shafts is shown in Fig. A6.1.

NOTE 4—A map of hydraulic lifter positions in the engine is shown in Fig. A3.4.

9.8.2.8 Install the hydraulic lifter guide and hold down plates. Torque the hold down plates to 35 N·m.

9.8.2.9 Install the push rods and rocker arm assemblies in the engine locations marked on the parts. Torque the rocker arm shafts to 50 N·m. Refer to the GM Diesel Engine service manual (GM 16015.05-2) for proper installation.

9.8.3 *Second Test Oil Flush:*

9.8.3.1 Weigh and install a new test oil filter.

9.8.3.2 Charge 6.0 kg of test oil into the engine by way of the flush system. Record the actual weight of the oil charge.

9.8.3.3 Install the rocker arm cover lids.

9.8.3.4 Circulate the oil with the flush cart for 15 min.

9.8.3.5 After the oil has circulated for 5 min, crank the engine for a minimum of 2 min. Leave the flush system on while the engine is cranked.

9.8.3.6 Drain and weigh the oil from the engine. Remove, weigh, and discard the oil filter.

9.8.4 *Test Oil Charge:*

9.8.4.1 Weigh and install new oil filter.

9.8.4.2 Disconnect the flush system inlet hose from the oil pan. Install the cap on the oil pan fitting.

9.8.4.3 Use the flush system to charge 6.0 kg of test oil into the engine. Turn off the flush system before the inlet hose picks up air.

9.8.4.4 Remove the flush system outlet hose from the oil cooler. Install the cap on the oil cooler fitting. Be careful not to lose any portion of the test oil charge.

9.8.4.5 Purge the flush system into a container and pour all purged oil into the engine.

9.8.4.6 After a minimum of 2 min, check the oil level with the dipstick. The oil level should be at or near the full mark.

9.8.5 *Installation of the Crankcase Pressure Transducer*—Remove the dipstick and install the line leading to the crankcase pressure transducer to the dipstick tube.

9.8.6 *Calibration of the TDC Indicator*—Verifying the calibration of the TDC indicator located on the harmonic balancer is recommended.

9.8.7 *Verification of Injection Timing*—Start the engine according to 9.3. After the engine speed and fuel rate have stabilized at the specifications shown in Table 1, verify the injection timing is 11.5 ± 0.5 using the default settings on the timing meter. If the injection timing is outside this specification, rotate the injection pump and remeasure the timing.

9.9 *Fifty-Hour Steady State Test*—Start the engine according to 9.3. Operate the engine for 50 h at the steady state conditions noted in Table 1.

9.10 *Periodic Measurements:*

9.10.1 *Operational Data Acquisition*—Record the operational parameters shown in Table 1 (with the exception of coolant flow rate and coolant pressure) with automated data acquisition at a minimum frequency of once every 6 min.

9.10.2 *Injection Timing Measurement*—Measure and record the injection timing at least once every test.

9.11 *Oil Sampling and Oil Addition Procedures*—Take used oil samples at 25 and 50 h and add oil at 25 h. Make no other new oil additions or samples during the test. The sampling and new oil addition procedures are detailed below.

9.11.1 *Twenty-Five-Hour Oil Sampling and Oil Addition Procedure:*

NOTE 5—The engine is not shut down for oil addition or oil sampling at 25 h.

9.11.1.1 Weigh 1.0 kg of new oil into a beaker.

9.11.1.2 Remove a 100 mL purge from the engine. Then remove a 100 mL analysis sample from the engine. Label the sample bottle for identification with the test number, date, test hour, and oil code.

9.11.1.3 Pour the 1.0 kg of new test oil and the 100 mL purge into the engine.

9.11.2 *Fifty-Hour Oil Sampling Procedure:*

NOTE 6—The engine is not shut down for oil sampling at 50 h.

9.11.2.1 Remove a 100 mL purge from the engine. Remove a 100 mL analysis sample from the engine. Label the sample bottle for identification with the test number, date, test hour, and oil code.

9.12 *End of Test (EOT) Procedure:*

9.12.1 *Engine Oil Removal*—Drain the oil from the sump within 60 min of EOT.

9.12.2 *Solvent Flush:*

9.12.2.1 Charge approximately 7 L of aliphatic naphtha into the engine by way of the flush system.

9.12.2.2 Circulate the solvent with the flush system for 20 min. While the solvent is circulating through the engine, rotate the engine two complete revolutions by hand to flush the valve train assembly.

9.12.2.3 Disconnect the flush system, and drain the solvent from the engine. If the engine is going to be laid up, flush and drain the engine with a 15W40 API CG-4 quality oil to prevent rusting.

9.12.3 *Lifter Removal*—Remove the lids from the rocker arm covers and remove the lifters from the engine.

9.12.4 *Roller Follower Shaft Removal*—Remove the axle from the lifter body by pressing the shaft from the body.

10. Calculation and Interpretation of Test Results

10.1 *Environment of Parts Measurement Area*—The ambient atmosphere of the parts measurement area shall be reasonably free of contaminants. Maintain the temperature within $\pm 3.0^\circ\text{C}$ of the temperature of the area when the machines were calibrated.

10.2 *Roller Follower Shaft Wear Measurements*—Measure and record the shape of the wear scar using a skidless stylus type measuring device. Make the measurement with the reference line etched on the end of the roller follower shaft in

a vertical position in the measuring device. Calculate the wear from the wear trace chart. In this test, wear for a given shaft is defined as the maximum vertical depth shown on the wear trace chart. An example of a typical wear trace and wear determination is shown in Fig. A6.2. Record the calculated wear and corresponding lifter position number.

10.3 Oil Analysis:

10.3.1 Wear Metals—Measure Al, Cr, Cu, Fe, Pb, Si, and Sn content on oil samples at 0 h (new oil from container), 25 h and 50 h. Test Method D 5185 is recommended.

10.3.2 Viscosity—Measure kinematic viscosity at 100°C on oil samples from 0 h (new oil), 25 h and 50 h in accordance with Annex A7.

10.3.3 Soot Quantity—Determine the soot quantity, % mass, on oil samples from 0 h (new oil), 25 h and 50 h in accordance with Annex A8.

10.4 Assessment of Test Validity—Specific requirements to determine test validity status are shown in Table 5. The testing laboratory shall use engineering judgment to assess the validity of tests which have deviations from the items listed in Table 5. The TMC will assist the laboratory in the determination of test validity, if requested by the laboratory. The mean of each parameter listed below, except injection timing, shall fall within the ranges listed below.

10.5 Injection timing is only measured once per test. All other parameters are measured at least once per 6 min.

10.6 All instrumentation shall be calibrated in accordance with Table A4.1.

11. Final Test Report

11.1 Reporting Calibration Test Results— Report all calibration (reference oil) tests to the TMC within five days of test completion. Facsimile transmit Fig. A5.1, Fig. A5.2, Fig. A5.3, Fig. A5.17, and Fig. A5.19 (reference Annex A5) to the ASTM TMC.² A copy of the final test report (all forms) should be submitted by mail to the test developer and the TMC within 30 days of test completion (reference A9.1).

11.2 Report Forms—The final report forms are shown in Annex A5. These forms are to be used for both calibration and non-reference tests. Use the Data Dictionary formats as shown in Annex A5 to report test values.

11.2.1 Electronic Data Transmission of Test Results—Annex A5 contains the RFWT and Header Data dictionaries. Additional information is also provided for its use. This information is provided to anyone wishing to transmit test information electronically. For more information on electronic transmissions, contact the TMC.

11.3 Interim Non-Valid Calibration Test Summary—This information includes test run number, test start and completion dates, the blind oil code, the industry oil code, the reason the test was not acceptable, the corrective action, and any other pertinent information. Include this information in the comments section of Fig. A5.19. Include a comment for each non-valid or aborted calibration test in a series.

11.4 Severity Adjustments—This test incorporates the use of a Severity Adjustment (SA) for non-reference test results. A control chart technique, described in 11.4.1 and 11.4.2, has been selected for the purpose of identifying when a bias becomes significant for Roller Follower Shaft Wear. When a significant bias is identified, a SA is applied to non-reference test results. The SA remains in effect until subsequent calibration test results indicate that the bias is no longer significant. SAs are calculated and applied on a laboratory basis.

11.4.1 Control Chart Technique For Severity Adjustments (SA)—Standardized calibration test results are applied using an exponentially weighted moving average (EWMA) technique. Values are standardized to Δ/s (result—target)/standard deviation). The targets and standard deviations for current calibration oils are published by the ASTM TMC. Include all operationally valid calibration tests in a laboratory control chart. Chart tests in order of completion. Record completion of tests by EOT date and time. EOT time is reported as hour and minute (Central Time) according to the 24-h clock (1 am = 1:00, 1 pm = 13:00). Reporting test completion time enables the TMC to properly order tests that are completed on the same day for industry plotting purposes. Report calibration tests to the TMC in order of test completion. A minimum of two tests is required to initialize a control chart.

11.4.2 Calculate EWMA values using the following equation:

$$Z_i = 0.2(Y_i) + 0.8(Z_{i-1}) \tag{1}$$

where:

$Z_0 = 0$,

$Y_i =$ standardized test result, and

$Z =$ EWMA of the standardized test result at test order i .

If the absolute value of EWMA, rounded to three places after the decimal, exceeds 0.600 then apply an SA to subsequent non-reference results.

11.4.3 Calculation of Severity Adjustment—The following example illustrates how to compute and apply EWMA and SA values. Please note, that test targets are presented for examples only.

Roller Follower Shaft Wear SA

TMC Oil 1004

Applicable Test Targets:

Mean = 0.41

Standard Deviation = 0.07

$Z_1 = -0.400$

TABLE 5 Operational Validity Requirements

Parameter	Specification
Speed, r/min	1000 ± 5
Fuel rate, kg/h (6.2 L engine)	9.0 ± 0.10
Fuel rate, kg/h (6.5 L engine)	9.40 ± 0.10
Fuel temperature, °C	35.0 ± 2.0
Coolant outlet temperature, °C	120.0 ± 2.0
Main oil gallery temperature, °C	120.0 ± 2.0
Intake air temperature, °C	32.0 ± 2.0
Intake air pressure, kPa	97.0 ± 1.0
Exhaust back pressure, kPa	103.0 ± 1.0
Injection timing, °BTDC	11.5 ± 0.5

Test Result:

$$T_2 = 0.30$$

Standard Test Result:

$$Y_2 = (T_2 - \text{Mean})/\text{Standard Deviation} = -1.571$$

$$\text{EWMA: } Z_2 = 0.2(Y_2) + 0.8(Z_1) = -0.634$$

11.4.3.1 Since $\|-0.634\| > 0.600$, apply an SA: SA = (-1) (EWMA) (standard deviation). Round this result to two decimal places. Enter this number on Fig. A5.2 under the non-reference oil test block in the space for severity adjustment. Add this value to non-reference average wear results. Enter the adjusted wear value in the appropriate space. An SA will remain in effect until the next calibration test. At that time, calculate a new EWMA.

12. Precision and Bias

12.1 *Reference Oil Precision and Reproducibility*—The TMC determines estimates of precision from calibration test results. These precision data are periodically updated and are available from the TMC.

12.2 Table 6 below shows the precision data (repeatability and reproducibility) for the Roller Follower Wear Test. Data was obtained from April 1993 through April 1995.

12.3 *Bias*—Bias is determined by applying an accepted statistical technique to reference oil test results and when a significant bias is determined, a severity adjustment is permitted for non-reference oil test results (see 11.4).

13. Keywords

13.1 calibrate; diesel engine; engine oil; light-duty; light-duty engine; lubricant; reference oil; roller follower shaft wear; used oil wear

TABLE 6 Test Precision—Reference Oils 1004 and 1004-1

Parameter	No. of Labs	N	Repeatability (<i>r</i>)	Reproducibility (<i>R</i>)
Roller follower wear	5	33	0.17	0.18

ANNEXES

(Mandatory Information)

A1. GUIDELINES FOR TEST PART SUBSTITUTION OR MODIFICATION

A1.1 *Engine Component Modifications*—No modifications are allowed to bring any engine component within a specification or cause a part to operate within a specification.

A1.2 *Test Part Substitution*—Obtain all lifters and engines used from the supplier listed in Appendix X1. Obtain oil filters used in the 50-h, steady state portion of the test from the

supplier listed in Appendix X1.

A1.3 *Substitution or Modification of Auxiliary Test Stand Equipment*—Substitutions or modifications of auxiliary test stand equipment are only allowed where explicitly stated or if the word *suggested* is used to describe a modification or component.

A2. GUIDELINES FOR UNITS AND SPECIFICATION FORMATS

A2.1 *Specified Units*—All dimensions are specified in appropriate SI units except pipe fittings, thermocouple diameters, and roller follower shaft wear. Pipe fittings and thermocouples are available worldwide and are not interchangeable with SI sized equivalents because of differences in thread dimensions. Since they are not interchangeable, no SI conversion is stated.

A2.2 *Significant Digits*—The appropriate number of significant digits for each operational parameter is shown in Table A2.1 (also refer to the Data Dictionary in Annex A10). Report operational data and wear measurement using the number of significant digits specified in Table A2.1.

A2.2.1 The following information applies to all specified limits in this standard. For purposes of determining conformance with these specifications, an observed value or a calculated value shall be rounded off to the nearest unit in the last

right hand figure used in expressing the limiting value in Table A2.1. This is in accordance with the rounding-off method of Practice E 29.

A2.3 *Units for Measurements and Unit Conversions*—With the exceptions noted in A2.1, all dimensions have been specified with rounded, convenient metric values where possible. The intent of this procedure is to cause all measurements to be completed directly in appropriate metric units. Because many specifications will not round to convenient inch-pound values, application of calibration and measurement systems that use metric units is strongly recommended. If the laboratory chooses to measure parameters in inch-pound units, the laboratory may be required to demonstrate that such measurements are within the appropriate tolerances specified in metric units after conversion to metric units.

A2.3.1 If the laboratory measures a parameter in inch-pound units, two conversions will be required before reporting:

TABLE A2.1 Significant Digits for Operating Conditions

Parameter	Round off to Nearest
Speed	1 r/min
Torque	1 N·m
Power	0.1 kW
Fuel rate	0.01 kg/h
Fuel temperature	0.1°C
Coolant inlet temperature	0.1°C
Coolant outlet temperature	0.1°C
Coolant flow rate	1 L/min
Coolant pressure	1 kPa
Main oil gallery temperature	0.1°C
Intake air temperature	0.1°C
Exhaust temperature	0.1°C
Oil sump temperature	0.1°C
Intake air pressure	0.1 kPa
Crankcase pressure	0.01 kPa
Exhaust back pressure	0.1 kPa
Injection timing	0.1°BTDC

Significant Digits for Wear Results	
Parameter	Round off to nearest
Roller follower shaft wear	0.00001 in.

one for conversion to inch-pound units for measurement and another conversion back to metric units for reporting. Inappropriate conversions or tolerance stacking could cause significant error.

A3. DETAILED SPECIFICATIONS OF THE APPARATUS

A3.1 The test engine is based on the General Motor Corporation's V8 indirect injection diesel engine. Assemble the test engine using modified cylinder heads and an individually timed injection pump.

A3.2 Use an engine test stand equipped to control engine speed and load, and various temperatures, pressures, and flow rates.

A3.3 Use an automated data acquisition system to measure various operating parameters.

A3.4 Use external systems to control engine intake air, fuel, coolant, and oil temperatures and pressures.

A3.5 Various external apparatus are required to measure and calibrate engine components, control systems, and operating parameters.

A3.6 *Organization of Apparatus Description Sections*—Detailed description of the apparatus is grouped into the following sections:

A3.6.1 *The Test Engine*— Paragraph A3.7.

A3.6.2 *Control Systems*— Paragraph A3.8.

A3.6.3 *Measurement Transducers and Systems*—Paragraph A3.9.

A3.7 *Test Engine:*

A3.7.1 *Test Engine Kit*—Obtain the engine kit from the supplier listed in A9.1.3 which contains all the necessary

A2.4 *Units for Reporting Results*—All data except roller follower shaft wear should be reported in appropriate metric units.

A2.5 *Specification Formats*—Specifications are listed in three different formats throughout the standard. Specifications which have a target and no tolerance are listed as x.xxx. For example, torque specifications are listed as 40 N·m. Specifications which have a target and a tolerance are listed as xx.xx ± x.xx. For example, engine speed is 1000 ± 5 r/min. Specifications which have ranges but no target are used when (1) the value of the parameter is not critical as long as the parameter is within the range specified or (2) the measurement technique is not precise.

A2.5.1 Specifications with a target imply the correct value is the target and the mean of a random sample representing the parameter should be equivalent to the target. The range is intended as a guide for maximum acceptable variation around the mean. Operation within the range specified does not imply that the parameter will not bias the final test results.

A2.5.1.1 A parameter with a target shall not be intentionally calibrated or controlled at a level other than the target.

consumable hardware for fifteen tests. A complete list of parts included in the kit is shown in Tables A3.1 and A3.2.

A3.7.1.1 *Critical Parts*—A critical part is any part that will impact combustion (fuel rate, injection timing, compression ratio, air flow, and oil consumption) or roller follower lubrication and loading (see Table A3.1).

TABLE A3.1 Critical Parts

Part No.	Description
	Engine assembly (6.2 or 6.5 L HD NA C/K)
	Short block assembly
10149616	Block assembly (6.2 or 6.5 L one pc seal)
14077141	Piston (NA)
14032399	Top rings
14025533	Second ring
23500288	Oil ring
14025524	Piston rod assembly (upper)
	Cylinder head assembly (HD NA 10)
10149663	Exhaust valves
14033927	Inlet valves
10230426	Prechambers (+ 10 % revolution throttle)
14025512	Valve springs
23502552	Exhaust valve stem seal
	Inlet valve stem seal
10163736	Head gasket (blue stripe)
14066308	Camshaft
23502598	Oil pan
BX-6202-1	Oil filter (Bowden)
DX-109561	Valve cover gasket (Western auto gasket)
10163737	Nozzle
10154615	Injection pump—(Arctic pump)
17109650	Lifter assembly

TABLE A3.2 Engine Test Kit

Part No.	Test Kit Item
BX-6200-1	Test kit—includes 1 each BX-6201-1, 30 each BX-6202-1 and 240 each BX-6204-1
BX-6201-1	Engine—complete with exception of front cover
BX-6202-1	Test oil filter
BX-6203-1	Front cover
BX-6204-1	Hydraulic lifter
BX-6205-1	Water cooled manifolds, left and right side
BX-6206-1	Exhaust manifold discharge flanges
BX-6207-1	Gaskets for exhaust manifold discharge flange
BX-6208-1	Studs for exhaust manifold
BX-6209-1	Time trac injection timing indicator w/¼ in. transducer
BX-6210-1	Intake air horn
BX-6212-1L	Rocker arm cover assembly, left
BX-6212-1R	Rocker arm cover assembly, right
BX-350-3	Oil separator

A3.7.2 Specially Fabricated Engine Parts—The following subsections detail the specially fabricated engine parts used in this test method:

A3.7.2.1 Exhaust Manifold Discharge Flanges—The flanges are required and are available from the supplier listed in [Appendix X1](#).

A3.7.2.2 Intake Air Horn—The design, including all modifications is required. Obtain modified intake air horns from the supplier listed in [Appendix X1](#).

A3.7.2.3 Rocker Arm Cover—The specially fabricated rocker arm cover is required. Obtain rocker arm covers from the supplier listed in [Appendix X1](#).

A3.7.2.4 Engine Front Cover—The engine front cover is required. Obtain front covers from the supplier listed in [Appendix X1](#).

A3.7.3 Engine Measurement and Assembly Equipment—Required special engine measurement and assembly equipment is described in [A3.7.3.1–A3.7.3.4](#). Items routinely used in the laboratory and workshop are not included.

A3.7.3.1 Injection Timing Measurement—Measure injection timing using the indicator located on the harmonic balancer. Use a Stanadyne Time Trac injection timing measurement device. Obtain it from the supplier listed in [Appendix X1](#).

A3.7.3.2 Oil Flush System—A flush system is required to flush the engine oil system between tests. The design of the system is not specified, but the reservoir should be capable of holding a minimum of 8 L of fluid.

A3.7.3.3 Hydraulic Lifter Removal Tool—The tool, Part No. J-29834, is not required, but it facilitates the removal of the hydraulic lifters from the engine. Information concerning tool acquisition is shown in [Appendix X1](#).

A3.7.3.4 Wear Measurement Device—Use a skidless stylus type measuring device to measure the wear on the roller follower shafts.

A3.7.4 Miscellaneous Equipment:

A3.7.4.1 Used Oil Sample Containers

Containers are necessary to obtain and store used oil samples. High density polyethylene containers (120 mL) are recommended for oil samples. (**Warning**—In addition to other precautions, glass containers are fragile and may cause injury or exposure to hazardous materials, if broken.)

A3.8 Test Stand Configuration and Control Systems:

A3.8.1 Engine Speed, Load and Fuel Consumption Rate Control Systems—Engine speed, load, and fuel consumption rate control systems shall be capable of maintaining the limits specified in [Table 1](#). Speed, load, and fuel consumption rate and parameters affecting air flow through the engine are interactive. Engine speed is typically controlled by varying dynamometer excitation, while engine fuel consumption rate and load are altered by varying the throttle position. Typical laboratory practices to control load and fuel consumption rate include fixed throttle position or closed-loop, feedback control systems.

A3.8.2 Fuel Supply System—The design is not specified, but the system shall be capable of controlling fuel temperature according to the specification shown in [Table 1](#). Maintain fuel transfer pressure above 45 kPa.

A3.8.3 Intake Air System—Configure the air supply system according to the schematic diagram shown in [Fig. A3.1](#). Fabricate a Piezometer ring according to [Fig. A3.1](#). The control system shall be capable of maintaining the intake-air temperature and pressure specifications shown in [Table 1](#).

A3.8.4 Engine Coolant System—A suggested cooling system is shown in the schematic diagram [A3.5](#). The Barco flow meter is the only required component.

A3.8.5 Exhaust Manifold Coolant System—Maintain the outlet water temperature of the water cooled manifolds below 60°C. Water-cooled exhaust plumbing downstream of the exhaust probes is a typical laboratory practice. Exhaust system design downstream of the water cooled manifold discharge flanges is not specified. (**Warning**—Good engineering practices should be utilized to ensure safe operation of this system. High temperature, low water flow, or low water pressure alarms, or both, are recommended to prevent damage due to lack of cooling during engine operation.)

A3.8.6 External Oil System—Configure the external oil system according to the schematic diagram shown in [Fig. A3.2](#). Install –8 lines to and from the oil cooler. Install a sample valve and a connection for the flush system to the line returning oil from the cooler. Performance specifications are shown in [Table 1](#).

A3.8.7 Crankcase Ventilation System—Configure the crankcase ventilation system as shown in [Fig. A3.3](#).

A3.8.8 Drive Line Configuration—Configure the engine mounting so that the crankshaft is horizontal. The engine cannot be used to drive any external engine accessory.

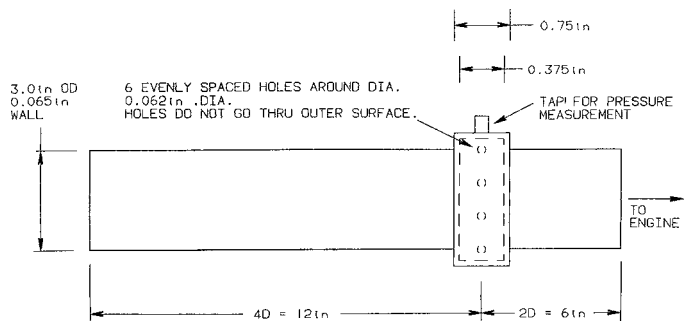


FIG. A3.1 Air Intake Piezometer Ring

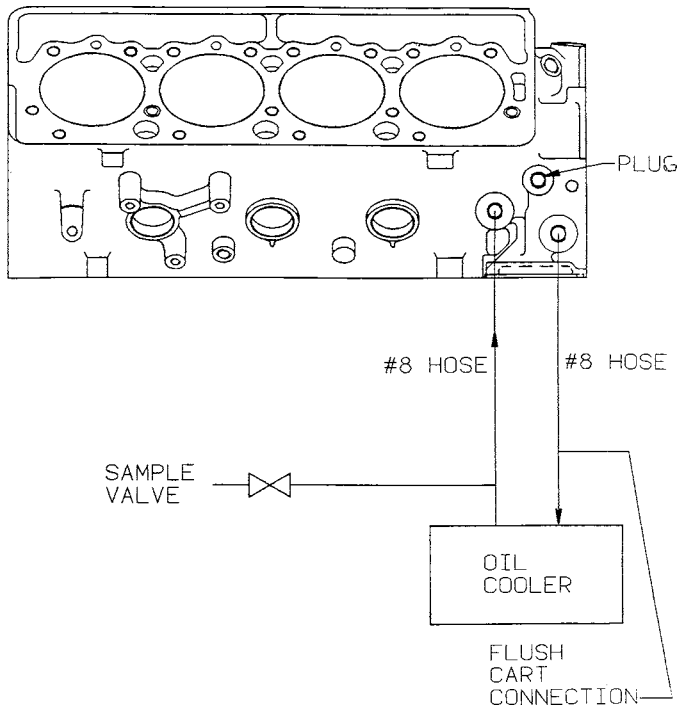


FIG. A3.2 External Oil Cooling System

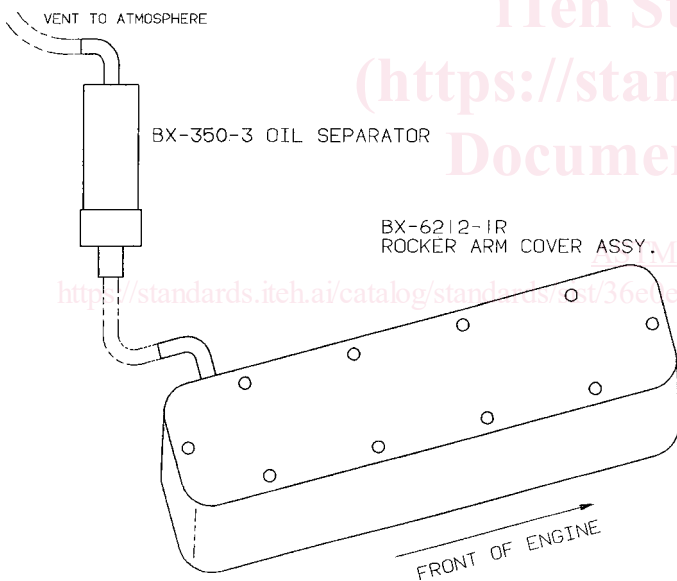


FIG. A3.3 Crankcase Ventilation System

A3.8.9 *Engine Starting Motor*—Air driven starter motors are strongly recommended because of the 2 min engine cranking time during the oil flush procedure.

A3.9 *Measurement Transducers and Systems:*

A3.9.1 *Engine Speed Measurement*—Engine speed is typically measured using a pulsed (magnetic pick-up based) system.

A3.9.1.1 *Engine Speed Measurement Calibration*—Calibrate the engine speed measurement and readout system before each calibration test.

A3.9.2 *Engine Load Measurement*—Measure engine load with a load cell attached to the dynamometer torque arm.

A3.9.2.1 *Engine Load Measurement Calibration*—Span the load measurement and readout system with deadweights before each engine calibration test. This may be done more frequently as needed.

A3.9.3 *Temperature Measurement Equipment:*

A3.9.3.1 Temperature measurement equipment and locations for the five required temperatures are specified. Alternative temperature measurement equipment shall be approved by the TMC. The accuracy and resolution of the temperature measurement sensors and the complete temperature measurement system shall follow the guidelines detailed in the research report.³

A3.9.3.2 All thermocouples shall be premium, sheathed, grounded types with premium wire. All thermocouples, with the exception of the engine exhaust temperature thermocouples, shall be 1/8 in. diameter. The engine exhaust temperature thermocouples shall be 1/8 in. or 1/4 in. diameter. Match thermocouples, wires, and extension wires to perform in accordance with the special limits of error as defined in ANSI MC96.1.

A3.9.3.3 *Coolant Inlet*—Install the tip at the center of the flow stream just before the flow is split into the right and left bank of the engine.

A3.9.3.4 *Coolant Outlet*—Install the tip to a depth of approximately 100 mm at the center of the flow stream in a thermostat housing tapped to accept a 1/8-in. diameter thermocouple.

A3.9.3.5 *Fuel Inlet*—Install the tip in a 1/4-in. diameter tee at the center of the flow stream approximately 50 mm upstream of the fuel filter, located behind the intake manifold.

A3.9.3.6 *Oil Gallery*—Remove the oil pressure sending unit which is located on the left rear on the top of the block. Install a 1/4-in. diameter NPT pipe closed nipple in the engine block. Install a 1/4-in. diameter thermocouple into the nipple. Install the thermocouple tip until it bottoms out in the oil gallery and back the thermocouple out approximately 6 mm. The installation depth will be about 150 mm.

A3.9.3.7 *Oil Sump*—Locate the thermocouple on the right side of the sump, approximately 50 mm from the bottom, and 150 mm from the rear. Install the tip approximately 75 mm into the sump.

A3.9.3.8 *Intake Air*—Install the tip midstream in the intake-air horn approximately 25 mm downstream of the inlet of the intake-air horn. This is approximately 200 mm downstream from the Piezometer ring as shown in Fig. A3.1.

A3.9.3.9 *Exhaust Gas*—Install the thermocouple into the bottom port on each water cooled manifold discharge flange.

A3.9.3.10 *Temperature Measurement Calibration*—Calibrate all thermocouples and temperature measurement systems before each calibration test. Each temperature measurement system shall indicate within ±0.5°C of the laboratory calibration standard. The calibration standard shall be traceable to national standards.

A3.9.4 *Pressure Measurement Equipment*—Requirements for pressure measurement are detailed in the following sections. Specific measurement equipment is not specified. This allows reasonable opportunity for adaptation of existing test stand instrumentation. However, the accuracy and resolution of

the pressure measurement sensors and the complete pressure measurement system shall follow the guidelines detailed in ASTM Research Report RR:D02-1218.³

A3.9.4.1 Operate pressure measurement transducers in a temperature controlled environment with a maximum temperature variation of $\pm 3^{\circ}\text{C}$ to prevent calibration drift. (**Warning**—Tubing between the pressure tap locations and the final pressure sensors should incorporate condensate traps as necessary by good engineering practice. This is particularly important in applications where low air pressures are transmitted by way of lines which pass through low-lying trenches between the test stand and the instrument console.)

A3.9.4.2 *Oil Pressure*— Measure oil pressure at the tee installed in place of the oil pressure sending unit, located at the left, rear of the engine (see A3.9.3.6).

A3.9.4.3 *Intake-Air Pressure*—Measure the intake-air pressure by way of a 1/4 in. diameter pressure tap mounted in a Piezometer ring on the intake air system (see Fig. A3.1).

A3.9.4.4 *Crankcase Pressure*—Measure the crankcase pressure at the dipstick tube.

A3.9.4.5 *Exhaust Back Pressure*—Locate the exhaust back pressure taps on the top of each water cooled manifold discharge flange. Tie both taps together. A sensor capable of absolute measurement is required. A condensate trap should be installed between the probe and sensor to accumulate water present in the exhaust gas.

A3.9.4.6 *Coolant System Pressure*—Measure the coolant system pressure at the top of the expansion tank as detailed in Fig. A3.4.

A3.9.4.7 *Fuel Pressure*— Measure fuel pressure upstream of the location of the fuel inlet thermocouple.

A3.9.4.8 *Pressure Measurement Calibration*—Calibrate all pressure transducer and measurement systems before each calibration test. Calibrate pressure measurement transducers in a temperature controlled environment. The calibration temperature shall be the same nominal value as the temperature in which the transducers are operated during testing.

A3.9.5 *Flow Rate Measurement Equipment*—Flow rate measurement for the required parameters is detailed in the following subsections. Measurement equipment is only specified for engine coolant flow rate. This allows reasonable opportunity for adaptation of existing test stand instrumentation. The accuracy and resolution of the flow rate measurement

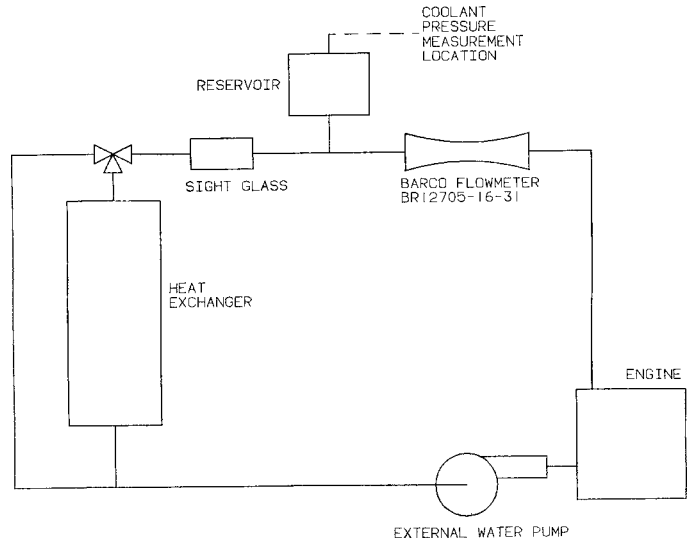


FIG. A3.4 Engine Coolant System

system shall follow the guidelines detailed in ASTM Research Report RR:D02-1218.³

A3.9.5.1 *Coolant Flow Rate*—Determine the engine coolant flow rate by measuring the differential pressure across the specified venturi flow meter (see Fig. A3.5). The pressure drop is approximately 5.0 kPa in the controlled flow range. Take precautions to prevent air pockets from forming in the lines to the pressure sensor. Transparent lines and bleed lines are beneficial in this application.

A3.9.5.2 *Coolant Flow Rate Calibration*—Calibrate the engine coolant flow meter before each calibration test as installed in the system at the test stand. Alternatively, the flow meter may be detached from the test stand and calibrated, providing the adjacent upstream and downstream plumbing is left intact during the calibration process. Calibrate the flow against a turbine flow meter or by a volume/time method.

A3.9.5.3 *Fuel Consumption Rate*—Determine the fuel consumption rate by measuring the rate of fuel flowing to the day tank.

A3.9.5.4 *Fuel Consumption Rate Measurement Calibration*—Calibrate fuel consumption rate measurement before every calibration test. Volumetric systems shall be temperature-compensated and calibrated against a mass flow device. The flow meter located on the test stand shall indicate within 0.2 % of the calibration standard.

A4. CALIBRATION

A4.1 *Organization of Calibration Description Sections*— Calibration is divided into two categories—measurement system calibration and test/engine calibration. Details on measurement system calibration are shown with each system or device in A3. A summary of calibration frequency for measurement systems and a cross reference to the corresponding apparatus section is shown in Table A4.1.

A4.2 Details on test engine/stand calibration are shown in A4.3.

TABLE A4.1 Measurement System Calibration Frequency

Measurement System	Calibration Frequency	Section Reference
Temperature	before each calibration test	A3.9.3.10
Pressure	before each calibration test	A3.9.4.7
Engine coolant flow	before each calibration test	A3.9.5.2
Fuel flow	before each calibration test	A3.9.5.4
Engine speed	before each calibration test	A3.9.1.1
Dynamometer load	before each calibration test	A3.9.2.1

A4.3 *Test Engine/Stand Calibration*—Calibrate the test