



**SLOVENSKI STANDARD**  
**SIST EN 15312:2007**

01-julij-2007

---

Df cghc`Xcghc dbUj Y bUa Ybg\_UýdcfHbUcdfYa U!`NU Hŷj Yžj \_`ŷ bc`n`j Ufbcghcž]b  
dfYg\_i gbY`a YŷcXY

Free access multi-sports equipment - Requirements, including safety, and test methods

Frei zugängliche Multisportgeräte - Anforderungen einschließlich Sicherheit und Prüfverfahren

Équipements sportifs en acces libre - Exigences, y compris de sécurité, et méthodes d'essai

**iTeh STANDARD PREVIEW**  
(standards.iteh.ai)

[SIST EN 15312:2007](https://standards.iteh.ai/catalog/standards/sist/054b5c43-e5ab-4d30-acc4-41111ca90c0e/sist-en-15312-2007)

Ta slovenski standard je istoveten z: **EN 15312:2007**

<https://standards.iteh.ai/catalog/standards/sist/054b5c43-e5ab-4d30-acc4-41111ca90c0e/sist-en-15312-2007>

---

**ICS:**

97.220.40	Oprema za športe na prostem in vodne športe	Outdoor and water sports equipment
-----------	---	------------------------------------

**SIST EN 15312:2007**

**en;fr;de**

**iTeh STANDARD PREVIEW**  
**(standards.iteh.ai)**

SIST EN 15312:2007

<https://standards.iteh.ai/catalog/standards/sist/054b5c43-e5ab-4d30-ae4-4111ca90c0e/sist-en-15312-2007>

ICS 97.220.40

English Version

## Free access multi-sports equipment - Requirements, including safety, and test methods

Equipements sportifs en accès libre - Exigences, y compris de sécurité, et méthodes d'essais

Frei zugängliche Multisportgeräte - Anforderungen einschließlich Sicherheit und Prüfverfahren

This European Standard was approved by CEN on 23 December 2006.

CEN members are bound to comply with the CEN/CENELEC Internal Regulations which stipulate the conditions for giving this European Standard the status of a national standard without any alteration. Up-to-date lists and bibliographical references concerning such national standards may be obtained on application to the CEN Management Centre or to any CEN member.

This European Standard exists in three official versions (English, French, German). A version in any other language made by translation under the responsibility of a CEN member into its own language and notified to the CEN Management Centre has the same status as the official versions.

CEN members are the national standards bodies of Austria, Belgium, Bulgaria, Cyprus, Czech Republic, Denmark, Estonia, Finland, France, Germany, Greece, Hungary, Iceland, Ireland, Italy, Latvia, Lithuania, Luxembourg, Malta, Netherlands, Norway, Poland, Portugal, Romania, Slovakia, Slovenia, Spain, Sweden, Switzerland and United Kingdom.

[SIST EN 15312:2007](https://standards.iteh.ai/catalog/standards/sist/054b5c43-e5ab-4d30-ace4-41111ca90c0e/sist-en-15312-2007)

<https://standards.iteh.ai/catalog/standards/sist/054b5c43-e5ab-4d30-ace4-41111ca90c0e/sist-en-15312-2007>



EUROPEAN COMMITTEE FOR STANDARDIZATION  
COMITÉ EUROPÉEN DE NORMALISATION  
EUROPÄISCHES KOMITEE FÜR NORMUNG

Management Centre: rue de Stassart, 36 B-1050 Brussels

## Contents

Page

Foreword.....	4
1 Scope .....	5
2 Normative references .....	5
3 Terms and definitions .....	6
4 General requirements.....	6
4.1 Materials .....	6
4.2 Structural integrity.....	7
4.3 Finish of equipment.....	8
4.4 Entrapment.....	9
4.4.1 Moving parts.....	9
4.4.2 Protection against entrapment.....	9
4.5 Protection against injuries due to movement.....	10
4.6 Connections .....	12
4.7 Consumable components (parts of wear and tear).....	12
4.8 Wire ropes .....	12
4.9 Chains .....	12
4.10 Foundations .....	13
4.11 Accessibility.....	13
4.12 Removable elements .....	13
5 Specific requirements.....	13
5.1 General.....	13
5.2 Basketball equipment.....	13
5.2.1 Requirements .....	13
5.2.2 Safety requirements .....	19
5.3 Goals .....	20
5.3.1 General.....	20
5.3.2 Structural stability and integrity.....	21
5.4 Nets and net fixings.....	22
5.4.1 Nets .....	22
5.4.2 Net fixings.....	22
5.5 Multi-sports surround and ball stop screen .....	22
5.5.1 Multi-sports surround .....	22
5.5.2 Ball stop screen .....	23
5.6 Multi-function central nets and posts.....	23
5.7 Table tennis tables.....	23
6 Test methods.....	23
6.1 General test methods .....	23
6.2 Test methods specific to basketball equipment.....	24
6.2.1 Ring .....	24
6.2.2 Net .....	24
6.2.3 Rigidity.....	24
6.2.4 Stability.....	25
7 Test report .....	26
8 Information for users.....	26
9 Marking .....	26
10 Information provided by the supplier and/or the manufacturer .....	26
Annex A (normative) Loads .....	27
A.1 Permanent loads .....	27
A.1.1 General.....	27
A.1.2 Self weight.....	27
A.1.3 Prestressing loads.....	27
A.1.4 Mass of water .....	27

A.2	Variable loads .....	27
A.2.1	General .....	27
A.2.2	User loads .....	28
A.2.3	Snow loads.....	30
A.2.4	Wind loads .....	30
A.2.5	Temperature loads .....	30
A.2.6	Seats: Specific loads.....	30
A.3	Numbers of users on the equipment.....	31
A.3.1	General .....	31
A.3.2	Number of users on a point.....	31
A.3.3	Number of users on line type elements .....	31
A.3.4	Number of users on an area.....	31
Annex B (normative)	Method of calculation of structural integrity.....	33
B.1	General principles: Limit state.....	33
B.1.1	Limit state.....	33
B.1.2	Ultimate limit state.....	33
B.1.3	Serviceability limit state.....	34
B.2	Load combinations for static analysis .....	34
B.3	Worked example of the calculation of user loads (without safety factors) for a surround/barrier .....	34
Annex C (normative)	Physical testing of structural integrity .....	36
C.1	Pass/fail criteria .....	36
C.1.1	Load carrying ability .....	36
C.1.2	Failure .....	36
C.2	Test load for equipment.....	36
C.2.1	Load combinations for testing.....	36
C.2.2	Safety factor for tests on identical series.....	36
C.2.3	Safety factor for tests on a unique product.....	37
C.3	Load application .....	37
C.3.1	Point loads .....	37
C.3.2	Line loads.....	37
C.3.3	Area loads .....	37
Annex D (normative)	Test methods for entrapment .....	38
D.1	General .....	38
D.2	Finger entrapment.....	38
D.2.1	Apparatus.....	38
D.2.2	Procedure.....	39
D.3	Head and neck entrapment.....	39
D.3.1	Completely bound openings .....	39
D.3.2	Partially bound and V-shaped openings.....	41
Annex E (normative)	Information to be provided by the supplier and/or manufacturer.....	48
E.1	Information provided by the manufacturer of equipment.....	48
E.1.1	General product information .....	48
E.1.2	Pre information .....	48
E.1.3	Installation information.....	48
E.1.4	Inspection and maintenance information .....	49
Annex F (normative)	Test methods for resistance surround.....	51
F.1	Testing repeated impact resistance to footballs and kicks .....	51
F.2	Impact resistance (violent kick from player) .....	52
Bibliography	.....	53

## Foreword

This document (EN 15312:2007) has been prepared by Technical Committee CEN/TC 136 "Sports, playground and other recreational equipment", the secretariat of which is held by DIN.

This document shall be given the status of a national standard, either by publication of an identical text or by endorsement, at the latest by August 2007 and conflicting national standards shall be withdrawn at the latest by August 2007.

According to the CEN/CENELEC Internal Regulations, the national standards organizations of the following countries are bound to implement this European Standard: Austria, Belgium, Bulgaria, Cyprus, Czech Republic, Denmark, Estonia, Finland, France, Germany, Greece, Hungary, Iceland, Ireland, Italy, Latvia, Lithuania, Luxembourg, Malta, Netherlands, Norway, Poland, Portugal, Romania, Slovakia, Slovenia, Spain, Sweden, Switzerland and United Kingdom.

## iTeh STANDARD PREVIEW (standards.iteh.ai)

[SIST EN 15312:2007](https://standards.iteh.ai/catalog/standards/sist/054b5c43-e5ab-4d30-ace4-41111ca90c0e/sist-en-15312-2007)

<https://standards.iteh.ai/catalog/standards/sist/054b5c43-e5ab-4d30-ace4-41111ca90c0e/sist-en-15312-2007>

## 1 Scope

This European Standard is applicable to free access multi-sports equipment and combinations intended for permanent installation (not temporary), which includes, but not exclusively, equipment for sports such as badminton, basketball, football, handball, hockey, table tennis, tennis, volleyball.

This European Standard specifies requirements, including safety, for the equipment itself as well as for its installation, inspection and maintenance. This European Standard is applicable to multi-sports equipment intended for individual and collective public use primarily by children and teenagers.

This type of equipment is not intended for use by very young children, e.g. less than 36 months.

This European Standard is not applicable to playground equipment as defined in EN 1176-1, free access facilities used for roller sports equipment (see EN 14974), fitness trails, artificial climbing structures (see EN 12572).

This European Standard does not deal with beach equipment, the ground surfaces the local environment and any feature outside the multi-sports equipment.

This European Standard does not include any specific requirements other than for access and egress for disabled users.

## 2 Normative references

The following referenced documents are indispensable for the application of this document. For dated references, only the edition cited applies. For undated references, the latest edition of the referenced document (including any amendments) applies.

- <http://standards.iteh.ai>
- [SIST EN 15312:2007](https://standards.iteh.ai/catalog/standards/sist-en-15312-2007)
- EN 636-3, *Plywood — Specifications — Part 3: Requirements for plywood for use in exterior conditions*
- prEN 1176-1:2006, *Playground equipment and surfacing — Part 1: General safety requirements and test methods*
- EN 1271, *Playing field equipment — Volleyball equipment — Functional and safety requirements, test methods*
- EN 1991-1-3, *Eurocode 1 — Actions on structures — Part 1-3: General actions — Snow loads*
- EN 1991-1-4, *Eurocode 1: Actions on structures — Part 2-4: General actions — Wind actions*
- EN 1991-1-5, *Eurocode 1: Actions on structures — Part 1-5: General actions — Thermal actions*
- EN 12572, *Artificial climbing structures — Protection points, stability requirements and test methods*
- EN ISO 1806, *Fishing nets — Determination of mesh breaking force of netting (ISO 1806:2002)*
- EN ISO 2062, *Textiles — Yarns from packages — Determination of single-end breaking force and elongation at break (ISO 2062:1993)*
- EN ISO 2307, *Fibre ropes — Determination of certain physical and mechanical properties (ISO 2307:2005)*
- ISO 8793, *Steel wire ropes — Ferrule secured eye terminations*

### 3 Terms and definitions

For the purposes of this document, the following terms and definitions apply.

#### 3.1

##### **free access multi-sports equipment**

equipment with which it is possible to practice one or more-sports where the access to the facilities is neither regulated nor necessarily supervised

#### 3.2

##### **goal**

defined opening or area which forms the target for ball games, usually comprising two uprights and one crossbar

NOTE The net is optional.

#### 3.3

##### **basketball equipment**

equipment comprising the following components: one backboard-one ring; the supporting frame; stability devices

NOTE The net is optional.

#### 3.4

##### **multi-sports surround**

element surrounding the area where ball games are played and which is designed to limit the motion of the user and/or the area of play

NOTE A multi-sports surround is e.g. a fence or a ball rebound wall; ball games are e.g. hockey, football.

#### 3.5

##### **ball stop-screen**

flexible or rigid fence or screen for restricting a ball from going in a specific direction

NOTE It is important that the location of the area of play accounts for the risks of balls leaving it. If the area of play is located next to a road, a ball stop screen may minimize the risk of players having to recover the ball from the road. It is equally important that other activities (e.g. playground area, artificial climbing structure) are protected from ball impact.

### 4 General requirements

#### 4.1 Materials

Materials should be selected and protected such that the structural integrity of the equipment manufactured from them is not affected before the next relevant maintenance inspection.

NOTE The provisions relating to certain materials in this European Standard do not imply that other equivalent materials are unsuitable in the manufacture of multi-sports equipment.

The selection of materials and their use should be in accordance with the appropriate European Standards where applicable.

Particular care should be taken in the choice of materials where equipment is to be used in extreme climatic or atmospheric conditions.

Where very low or very high temperatures can be anticipated care should be taken with material selection to avoid possible hazards through direct skin contact.



When choosing a material or substance for equipment, consideration should be given to the eventual disposal of the material or substance having regard to any possible environmental toxic hazard. Special attention should be given to potential toxic hazards of surface coatings.

NOTE The restrictions on the marketing and use of certain dangerous substances and preparations are ruled by the European Council Directive 76/769/EEC of the 27<sup>th</sup> July 1976 and its amendments.

## 4.2 Structural integrity

Structural integrity of the equipment, including stability, shall be assessed by one of the following unless otherwise stated in Clause 5:

- a) calculation, carried out in accordance with Annexes A and B,
- b) physical testing, in accordance with Annex C, or
- c) a combination selected from either a) or b).

When calculations are carried out in accordance with Annex B, no limit states shall be exceeded at combinations of loads as given in B.2.

When tested in accordance with Annex C, the equipment shall not show any cracks, damage or excessive permanent deformation.

For some equipment, these specific calculations or tests are not always appropriate, but the structural integrity shall be at least equivalent.

For a family of products, the structural integrity for the worst case of the intended combinations shall be proved.

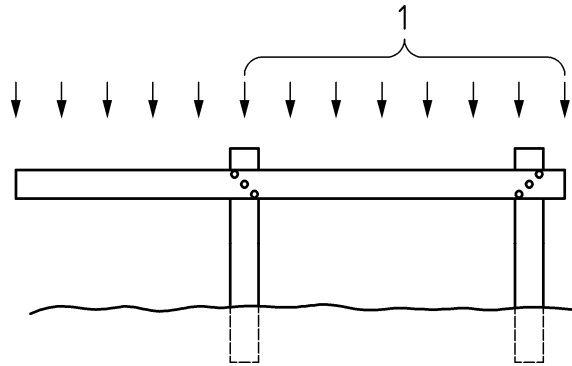
Each structure shall resist both the permanent and variable loads acting on equipment and parts of equipment as described in Annex C.

NOTE 1 No allowance for accidental loads, i.e. loads produced by fire, collision by vehicles or earthquake, need to be made for multi-sports equipment.

NOTE 2 The loads associated with fatigue are in general much smaller than the loads in combination with the appropriate load factors when calculated according to B.2. Therefore, the equipment does not need to be verified for fatigue, in general.

Structural parts shall resist the worst case loading condition.

NOTE 3 In order to achieve this, it can be necessary to remove that part of the user load causing favourable effects, as shown in Figure 1.



**Key**

1 part of the load to be removed because of favourable effects

**Figure 1 — Example of removal of that part of the user load which causes a favourable effect**

**4.3 Finish of equipment**

Wooden equipment shall be made of wood with a low susceptibility to splintering. The surface finish of equipment made of other materials (e.g. glass fibre) shall be non-splintering.

Rough surfaces should not present any risk of injury.

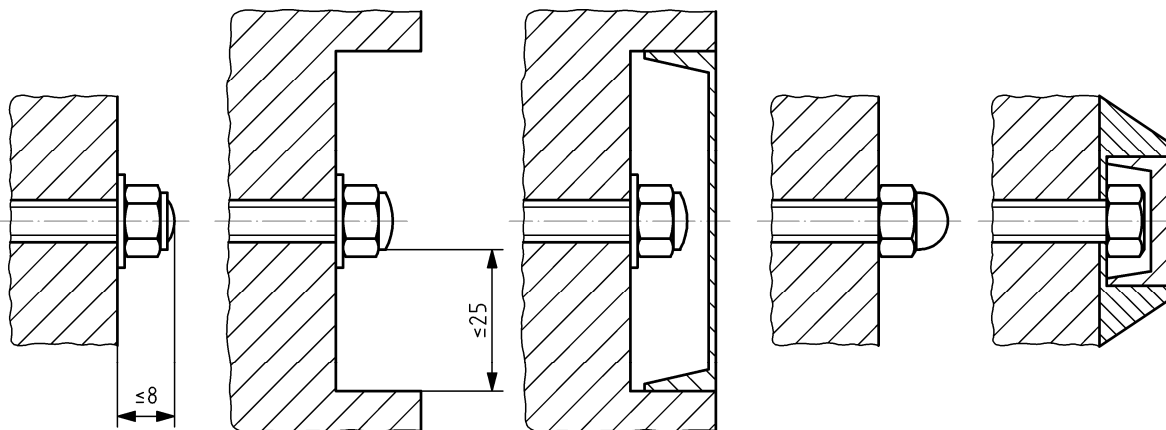
There shall be no protruding nails, projecting wire, rope terminations or pointed or hard and sharp-edged parts within any accessible part of the equipment. Corners, edges and projecting parts within any accessible part of the equipment that project more than 8 mm, and which are not shielded by adjacent areas that are not more than 25 mm from the end of the projecting part, shall be rounded off. The minimum radius of the curve shall be 3 mm.

<https://standards.iteh.ai/catalog/standards/sist/054b5c43-e5ab-4d30-acc4-1711ca500e99/en-15312-2007>

Protruding bolt threads within any accessible part of the equipment shall be permanently covered, e.g. dome-headed nuts. Nuts and bolt heads that project less than 8 mm shall be free from burrs. All welds shall be ground smooth.

NOTE Figure 2 shows examples of protection for nuts and bolts.

Dimensions in millimetres



**Figure 2 — Examples of protection for nuts and bolts**

## 4.4 Entrapment

### 4.4.1 Moving parts

There shall be no crushing points or shearing points between moving and/or stationary parts of the equipment in accordance with 4.4.2.

### 4.4.2 Protection against entrapment

#### 4.4.2.1 Entrapment of the head and neck

##### 4.4.2.1.1 General

Equipment shall be constructed so that any openings do not create head and neck entrapment hazards either by head first or feet first passage. Hazardous situations in which this type of entrapment can be encountered include the following:

- a) completely bound openings through which a user may slide feet first or head first,
- b) partially bound or V-shaped openings and
- c) other openings (e.g. shearing or moving openings).

##### 4.4.2.1.2 Completely bound openings

Accessible completely bound openings with a lower edge more than 600 mm above ground shall be tested in accordance with D.3.1

Small probes n°1 and n°2 shall not pass through any opening unless it also allows the passage of large probe n°3.

Non-rigid parts (e.g. ropes) shall not overlap if this creates apertures that are not in accordance with the above.

##### 4.4.2.1.3 Partially bound and V-shaped openings

Partially bound and V-shaped openings with an entrance at 600 mm or more above the ground shall be constructed so that either:

- 1) the opening is not accessible when tested in accordance with D.3.2, or
- 2) if accessible at a position of 600 mm or more above ground when tested in accordance with D.3.2,

depending on the angular orientation range of the opening (see Figure D6a), shall comply with the following:

- Range 1: (template centre line  $\pm 45^\circ$  from vertical); the template apex contacts the base of the opening and the depth of the opening is less than the length of the template to the underside of the shoulder section.
- Range 2: (template centre line  $+ 45^\circ$  to  $- 30^\circ$  from the horizontal); the template apex contacts the base of the opening and the depth is less than the 'A' portion of the template. If the depth of the opening is greater than the 'A' portion of the template all parts of the opening above the 'A' portion shall also allow insertion of the shoulder section of the template or Probe n°3
- Range 3: no template test requirements.

##### 4.4.2.2 Entrapment of finger

Equipment shall be constructed so that hazardous situations including:

- a) gaps in which fingers can be trapped whilst the remainder of the body is moving or continues in motion involuntarily,
- b) open-ended tubes or pipes, and
- c) variable gaps (excluding chains),

in which this type of entrapment can be encountered, are not created.

Openings and holes which have a lower edge more than 1 200 mm above the playing surface, when tested in accordance with D.2, shall conform to the following requirements:

- a) the 8 mm finger rod (see Figure D.1) shall not pass through the minimum cross-section of the opening and the profile of the opening shall be such that the rod cannot be locked in any position when set in motion as given in D.2.2, or
- b) if the 8 mm finger rod passes through the opening, the 25 mm finger rod (see Figure D.1) shall also pass through the opening, provided that the opening does not permit access to another finger entrapment site.

The ends of tubes and pipes shall be closed off to prevent the risk of finger entrapment.

The closures shall not be removable without using tools.

Gaps whose dimensions change during use of the equipment shall have a minimum dimension in any position of 18 mm.

iTeh STANDARD PREVIEW  
(standards.iteh.ai)

#### 4.5 Protection against injuries due to movement

The space in, on or around the equipment that can be occupied by the user shall not contain any obstacles that the user is not likely to expect and which could cause injuries if hit by the user (see Figure 3). Examples of expected obstacles, such as anti-cycle bars (which may be removable to allow wheel chair access), are excluded from this requirement (see Figure 4).

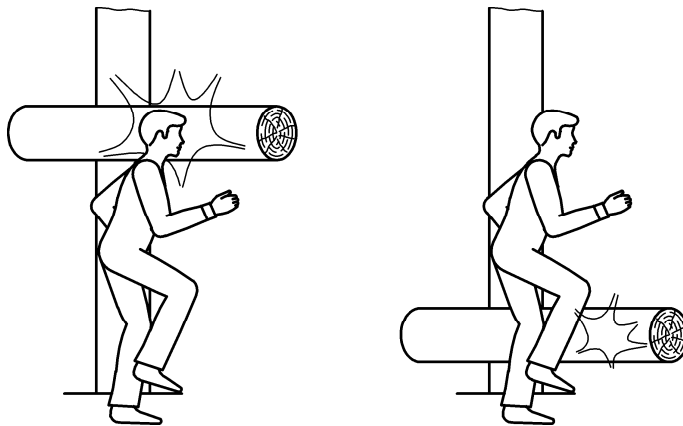
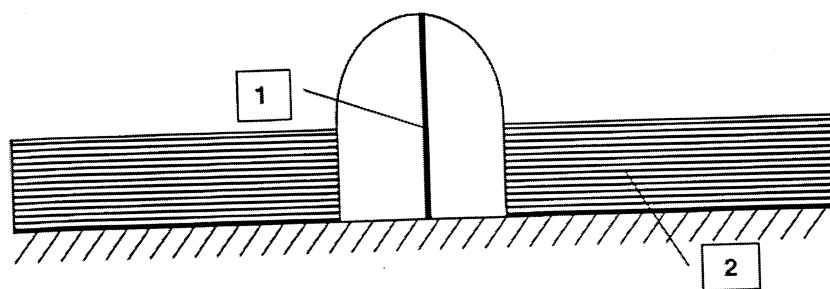
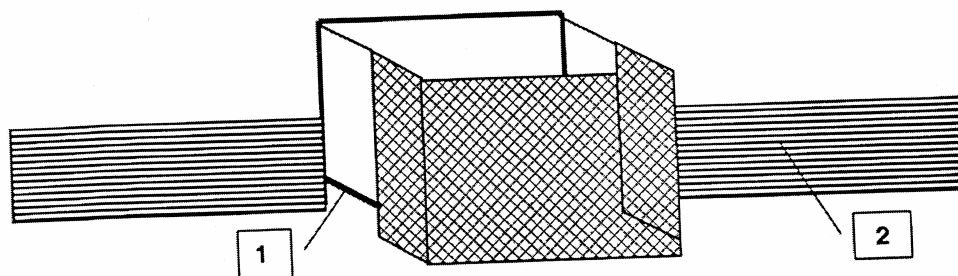


Figure 3 — Examples of unexpected obstacles



a)

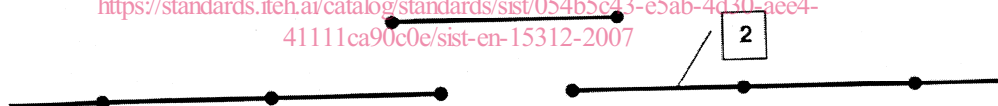


b)

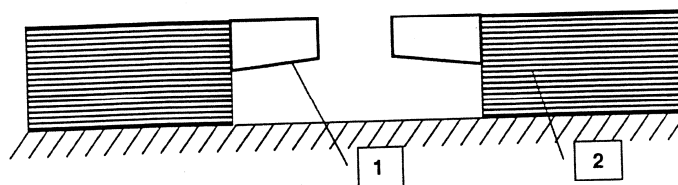
iTeh STANDARD PREVIEW  
(standards.iteh.ai)

SIST EN 15312:2007

<https://standards.iteh.ai/catalog/standards/sist/054b5c43-e5ab-4d30-acc4-41111ca90c0e/sist-en-15312-2007>



c)



d)

**Key**

- 1 anti-cycle bar
- 2 multi-sports surround

Figure 4 — Examples of expected obstacles

#### 4.6 Connections

Connections shall be secured such that they cannot come loose of their own accord unless specifically designed to do so.

Connections shall be safeguarded so that they cannot be undone without tools.

#### 4.7 Consumable components (parts of wear and tear)

Components subjected to wear or designed to be renewed during the life of the equipment, for example bearings, shall be capable of being replaced.

Replaceable components should be protected against an unauthorised intervention and should require little maintenance. Any lubricants leaking out should not soil the equipment or adversely affect its safe use.

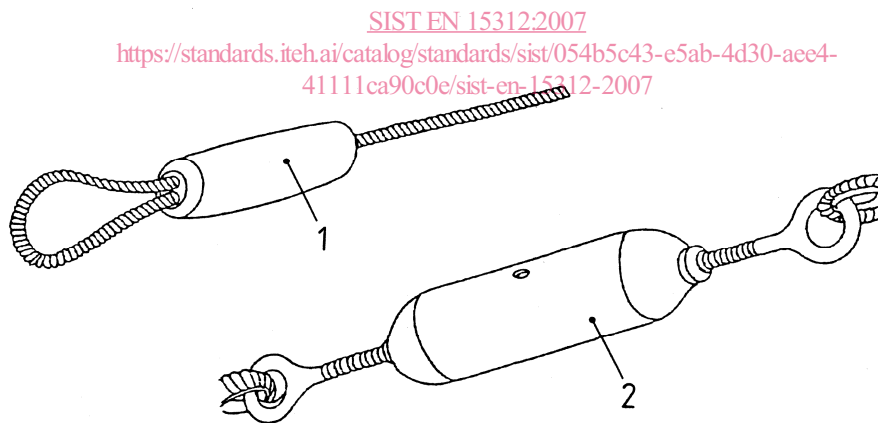
#### 4.8 Wire ropes

Wire ropes shall be made from galvanized or corrosion-resistant wire.

Ferrules shall conform to ISO 8793 and the rope end shall coincide with the edge of the grip. Accessible wire rope clips, the thread ends of which protrude more than 8 mm, shall only be used outside the playing area or shall be covered by suitable means.

Turnbuckles shall have two closed loops and shall be made from corrosion-resistant material. It shall not be possible to undo turnbuckles without a tool.

Figure 5 shows examples of ferrules and turnbuckles.



#### Key

- 1 ferrule
- 2 turnbuckle

Figure 5 — Examples of ferrules and turnbuckles

#### 4.9 Chains

Chains shall have a maximum opening of 8,6 mm in any one direction except where connections are made, where the maximum opening shall be greater than 18 mm or less than 8,6 mm.

## 4.10 Foundations

The foundations shall be designed such that they do not present a hazard (tripping, impact). Care should be taken to ensure that foundations are not exposed as a result of erosion.

## 4.11 Accessibility

Any part of multi-sports equipment where the user is encouraged to access (e.g. play elements such as ladders, climbing walls...) to an elevated surface above 1 m height is classified as a play structure and shall comply with the requirements 4.2.4 "protection against falling", 4.2.8 "protection against injuries during movement and falling" and 4.2.7.3 "entrapment of clothing/hair" of prEN 1176-1:2006.

When an elevated surface abuts a multi-sports area as a spectator platform for visibility of multi-sports activities, no impact attenuating surface is required within the multi-sports area if a barrier of 2 m minimum height is provided. The requirements for impact attenuating surface apply to the remaining sides of the elevated surface.

NOTE The barrier is intended to prevent users gaining access to the multi-sports area either over the top or to the side of the barrier.

## 4.12 Removable elements

If the equipment includes any elements that are designed to be removable (e.g. post, exchange of individual parts of equipment), any cavities or holes left in the surface shall be suitably covered to ensure continuity of the playing surface.

**iTeh STANDARD PREVIEW**  
(standards.iteh.ai)

## 5 Specific requirements

### 5.1 General

[SIST EN 15312:2007  
https://standards.iteh.ai/catalog/standards/sist/054b5c43-e5ab-4d30-ace4-41111ca90c0e/sist-en-15312-2007](https://standards.iteh.ai/catalog/standards/sist/054b5c43-e5ab-4d30-ace4-41111ca90c0e/sist-en-15312-2007)

Equipment shall comply with general requirements of this European Standard except in so far as they are modified by this section.

### 5.2 Basketball equipment

#### 5.2.1 Requirements

##### 5.2.1.1 Classification

Basketball equipment shall be classified by the design (types), the free space and typical performance criterion (classes) as shown in Tables 1 and 2.

NOTE This classification is in line with EN 1270.

**Table 1 — Types**

Type	Description	Example
1	fixed wall mounted	Figure 6
2	removable with sockets	Figure 7
3	fixed in the ground	Figure 8
4	combined basketball goal	Figure 13