
**Petroleum and natural gas industries —
Drilling and production equipment —
Wellhead and christmas tree equipment**

*Industries du pétrole et du gaz naturel — Équipement de forage et de
production — Équipement pour têtes de puits et arbre de Noël*

iTeh STANDARD PREVIEW
(standards.iteh.ai)

[ISO 10423:2001](https://standards.iteh.ai/catalog/standards/sist/b9bef6b9-5572-408e-bd72-8eef69aa2078/iso-10423-2001)

[https://standards.iteh.ai/catalog/standards/sist/b9bef6b9-5572-408e-bd72-
8eef69aa2078/iso-10423-2001](https://standards.iteh.ai/catalog/standards/sist/b9bef6b9-5572-408e-bd72-8eef69aa2078/iso-10423-2001)



PDF disclaimer

This PDF file may contain embedded typefaces. In accordance with Adobe's licensing policy, this file may be printed or viewed but shall not be edited unless the typefaces which are embedded are licensed to and installed on the computer performing the editing. In downloading this file, parties accept therein the responsibility of not infringing Adobe's licensing policy. The ISO Central Secretariat accepts no liability in this area.

Adobe is a trademark of Adobe Systems Incorporated.

Details of the software products used to create this PDF file can be found in the General Info relative to the file; the PDF-creation parameters were optimized for printing. Every care has been taken to ensure that the file is suitable for use by ISO member bodies. In the unlikely event that a problem relating to it is found, please inform the Central Secretariat at the address given below.

iTeh STANDARD PREVIEW
(standards.iteh.ai)

ISO 10423:2001

<https://standards.iteh.ai/catalog/standards/sist/b9bef6b9-5572-408e-bd72-8eef69aa2078/iso-10423-2001>

© ISO 2001

All rights reserved. Unless otherwise specified, no part of this publication may be reproduced or utilized in any form or by any means, electronic or mechanical, including photocopying and microfilm, without permission in writing from either ISO at the address below or ISO's member body in the country of the requester.

ISO copyright office
Case postale 56 • CH-1211 Geneva 20
Tel. + 41 22 749 01 11
Fax + 41 22 749 09 47
E-mail copyright@iso.ch
Web www.iso.ch

Printed in Switzerland

Contents

Page

Foreword.....	vi
Introduction.....	vii
1 Scope	1
1.1 Purpose	1
1.2 Applicability	1
1.3 Service conditions	2
1.4 Product specification levels (PSL)	3
2 Normative references	6
3 Terms, definitions and abbreviated terms	8
3.1 Terms and definitions	8
3.2 Abbreviated terms	20
4 Design and performance — General requirements	21
4.1 Performance requirements — General	21
4.2 Service conditions	21
4.3 Design methods	23
4.4 Miscellaneous design information	27
4.5 Design documentation	28
4.6 Design review	28
4.7 Design verification	28
5 Materials — General requirements	28
5.1 General	28
5.2 Written specifications	28
5.3 Mandrel tubing and casing hangers	29
5.4 Bodies, bonnets, end and outlet connections	32
5.5 Ring gaskets	39
5.6 Test coupons (TC)	40
5.7 Qualification test coupons (QTC)	43
5.8 Heat-treating equipment qualification	46
5.9 Material qualification	46
5.10 Bullplugs and valve-removal plugs	46
5.11 Back-pressure valves	46
5.12 Pressure-boundary penetrations	46
5.13 Wear bushings	46
5.14 Hub-end connectors	46
6 Welding — General requirements	47
6.1 General	47
6.2 Non-pressure-containing weldments other than weld overlays (PSL 1 to PSL 3)	47
6.3 Pressure-containing fabrication weldments for bodies, bonnets, end and outlet connections, bullplugs, valve-removal plugs and back-pressure valves	47
6.4 Pressure-containing repair weldments for bodies, bonnets, end and outlet connections, bullplugs, valve-removal plugs and back-pressure valves	52
6.5 Weld overlay for corrosion resistance and/or hard facing and other material surface property controls	54

7	Quality control.....	57
7.1	General.....	57
7.2	Measuring and testing equipment	57
7.3	Quality control personnel qualifications	58
7.4	Quality control requirements.....	58
7.5	Quality control records requirements	95
8	Equipment marking	100
8.1	Marking requirements	100
8.2	Wellhead equipment.....	102
8.3	Connectors and fittings.....	102
8.4	Casing and tubing hangers.....	102
8.5	Valves and chokes.....	103
8.6	Loose connectors [flanged, threaded, other end connectors (OEC) and welded]	104
8.7	Other equipment	104
8.8	Studs and nuts	105
8.9	Christmas trees.....	105
8.10	Valve-removal plugs.....	105
8.11	Bullplugs.....	105
8.12	Back-pressure valves.....	106
9	Storing and shipping	106
9.1	Draining after testing.....	106
9.2	Rust prevention.....	106
9.3	Sealing surface protection.....	106
9.4	Assembly and maintenance instructions.....	106
9.5	Ring gaskets.....	106
9.6	Age control of non-metallic materials	106
10	Equipment-specific requirements.....	107
10.1	Flanged end and outlet connections	107
10.2	Threaded end and outlet connections.....	140
10.3	Studs and nuts.....	146
10.4	Ring gaskets.....	148
10.5	Valves.....	154
10.6	Casing and tubing heads	169
10.7	Casing and tubing hangers.....	174
10.8	Tubing-head adapters	179
10.9	Chokes	181
10.10	Tees and crosses.....	184
10.11	Test and gauge connections for 103,5 MPa and 138,0 MPa (15 000 psi and 20 000 psi) equipment.....	189
10.12	Fluid sampling devices	189
10.13	Christmas trees.....	192
10.14	Cross-over connectors.....	192
10.15	Adapter and spacer spools.....	197
10.16	Actuators	198
10.17	Lock screws, alignment pins and retainer screw packing mechanisms	202
10.18	Other end connectors (OECs)	203
10.19	Top connectors	204
10.20	Surface and underwater safety valves and actuators.....	205
10.21	Bullplugs.....	210
10.22	Valve-removal plugs.....	213
10.23	Other pressure-boundary penetrations.....	213
10.24	Back-pressure valves.....	214
11	Repair and remanufacture	214

iTech STANDARD PREVIEW
(standards.iteh.ai)

<https://standards.iteh.ai/catalog/standards/sist/b9bc8b9-5572-408c-bd72-6cc109aa2078/iso-10423-2001>

Annex A (informative) Purchasing guidelines	215
Annex B (informative) US customary unit tables and data for this International Standard	234
Annex C (informative) Method of calculating stud bolt lengths for type 6B and 6BX flanges	289
Annex D (informative) Recommended flange bolt torque	291
Annex E (informative) Recommended weld groove design dimensions	295
Annex F (informative) Performance verification procedures	299
Annex G (informative) Design and rating of equipment for use at elevated temperatures	333
Annex H (normative) Design and manufacture of surface wellhead running, retrieving and testing tools, clean-out tools and wear bushings	336
Annex I (normative) Performance verification procedures for surface safety valves and underwater safety valves	340
Annex J (normative) Repair and remanufacture requirements	348
Annex K (informative) Recommended specifications for top connectors for christmas trees	361
Annex L (normative) Specifications for valve-removal preparations and valve-removal plugs	376
Annex M (informative) List of tables and figures	391
Bibliography	401

iTeh STANDARD PREVIEW (standards.iteh.ai)

[ISO 10423:2001](https://standards.iteh.ai/catalog/standards/sist/b9bef6b9-5572-408e-bd72-8eef69aa2078/iso-10423-2001)

<https://standards.iteh.ai/catalog/standards/sist/b9bef6b9-5572-408e-bd72-8eef69aa2078/iso-10423-2001>

Foreword

ISO (the International Organization for Standardization) is a worldwide federation of national standards bodies (ISO member bodies). The work of preparing International Standards is normally carried out through ISO technical committees. Each member body interested in a subject for which a technical committee has been established has the right to be represented on that committee. International organizations, governmental and non-governmental, in liaison with ISO, also take part in the work. ISO collaborates closely with the International Electrotechnical Commission (IEC) on all matters of electrotechnical standardization.

International Standards are drafted in accordance with the rules given in the ISO/IEC Directives, Part 3.

Draft International Standards adopted by the technical committees are circulated to the member bodies for voting. Publication as an International Standard requires approval by at least 75 % of the member bodies casting a vote.

Attention is drawn to the possibility that some of the elements of this International Standard may be the subject of patent rights. ISO shall not be held responsible for identifying any or all such patent rights.

International Standard ISO 10423 was prepared by Technical Committee ISO/TC 67, *Materials, equipment and offshore structures for petroleum and natural gas industries*, Subcommittee SC 4, *Drilling and production equipment*.

This second edition cancels and replaces ISO 10419, ISO 10433 and the first edition of ISO 10423 (ISO 10423:1994).

iTeh STANDARD PREVIEW
(standards.iteh.ai)

Annexes H, I, J and L form a normative part of this International Standard. Annexes A, B, C, D, E, F, G, K and M are for information only.

<https://standards.iteh.ai/catalog/standards/sist/b9bef6b9-5572-408e-bd72-8eef69aa2078/iso-10423-2001>

Introduction

This International Standard is based on API Spec 6A, seventeenth edition, February 1996, its errata and supplement, and API Spec 6AV1, first edition, February 1996.

The contents of API Spec 14D (upon which ISO 10433 was based) and API Recommended Practice 14H (upon which ISO 10419 was based) have been incorporated in API Spec 6A, seventeenth edition.

The International System of units (SI) is used in this International Standard. However, nominal sizes are shown as fractions in the inch system.

The fractions and their decimal equivalents are equal and interchangeable. Metric conversions and inch dimensions in this International Standard are based on the original fractional inch designs. Functional dimensions have been converted into the metric system to ensure interchangeability of products manufactured in metric or inch systems (see also annex B).

Tables referenced in the main body of this International Standard which are marked with an asterisk are repeated in annex B in US customary units with the same table number as in the main body but with the prefix B. See also annex M for listings of tables and figures.

Users of this International Standard should be aware that further or differing requirements may be needed for individual applications. This International Standard is not intended to inhibit a vendor from offering, or the purchaser from accepting, alternative equipment or engineering solutions for the individual application. This may be particularly applicable where there is innovative or developing technology. Where an alternative is offered, the vendor should identify any variations from this International Standard and provide details.

[ISO 10423:2001](https://standards.iteh.ai/catalog/standards/sist/b9bef6b9-5572-408e-bd72-8eef69aa2078/iso-10423-2001)

<https://standards.iteh.ai/catalog/standards/sist/b9bef6b9-5572-408e-bd72-8eef69aa2078/iso-10423-2001>

iTeh STANDARD PREVIEW
(standards.iteh.ai)

ISO 10423:2001

<https://standards.iteh.ai/catalog/standards/sist/b9bef6b9-5572-408e-bd72-8eef69aa2078/iso-10423-2001>

Petroleum and natural gas industries — Drilling and production equipment — Wellhead and christmas tree equipment

1 Scope

1.1 Purpose

This International Standard specifies requirements and gives recommendations for the performance, dimensional and functional interchangeability, design, materials, testing, inspection, welding, marking, handling, storing, shipment, purchasing, repair and remanufacture of wellhead and christmas tree equipment for use in the petroleum and natural gas industries.

This International Standard does not apply to field use, field testing or field repair of wellhead and christmas tree equipment.

1.2 Applicability

This International Standard is applicable to the following specific equipment.

a) Wellhead equipment:

- casing head housings; [ISO 10423:2001](https://standards.iteh.ai/catalog/standards/sist/b9bef6b9-5572-408e-bd72-8eef69aa2078/iso-10423-2001)
- casing head spools;
- tubing head spools;
- cross-over spools;
- multi-stage head housings and spools.

b) Connectors and fittings:

- cross-over connectors;
- tubing head adapters;
- top connectors;
- tees and crosses;
- fluid-sampling devices;
- adapter and spacer spools.

c) Casing and tubing hangers:

- mandrel hangers;
- slip hangers.

ISO 10423:2001(E)

d) Valves and chokes:

- single valves;
- multiple valves;
- actuated valves;
- valves prepared for actuators;
- check valves;
- chokes;
- surface and underwater safety valves and actuators;
- back-pressure valves.

e) Loose connectors [flanged, threaded, other end connectors (OEC), and welded]:

- weld neck connectors;
- blind connectors;
- threaded connectors;
- adapter and spacer connectors;
- bullplugs;
- valve-removal plugs.

iTeh STANDARD PREVIEW
(standards.iteh.ai)

[ISO 10423:2001](https://standards.iteh.ai/catalog/standards/sist/b9bef6b9-5572-408e-bd72-8eef69aa2078/iso-10423-2001)

<https://standards.iteh.ai/catalog/standards/sist/b9bef6b9-5572-408e-bd72-8eef69aa2078/iso-10423-2001>

f) Other equipment:

- actuators;
- hubs;
- pressure boundary penetrations;
- ring gaskets;
- running and testing tools (in annex H);
- wear bushings (in annex H).

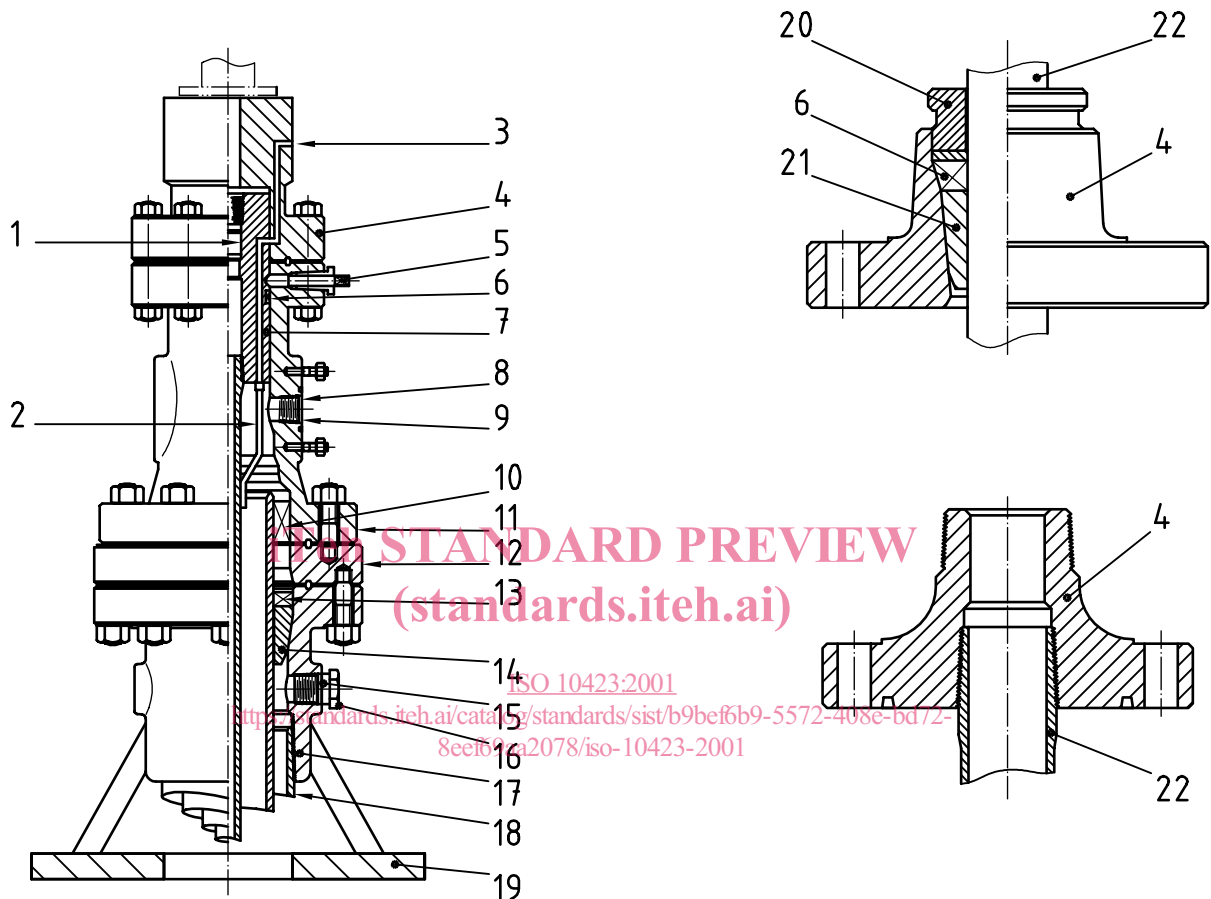
The nomenclature used in this International Standard for typical equipment is shown in Figure 1 and Figure 2. All parts whose physical dimensions conform to the metric tables incorporated into the body of this International Standard or to the US customary units tables in annex B are acceptable (see Introduction).

1.3 Service conditions

This International Standard defines service conditions, in terms of pressure, temperature and material class for the well-bore constituents, and operating conditions.

1.4 Product specification levels (PSL)

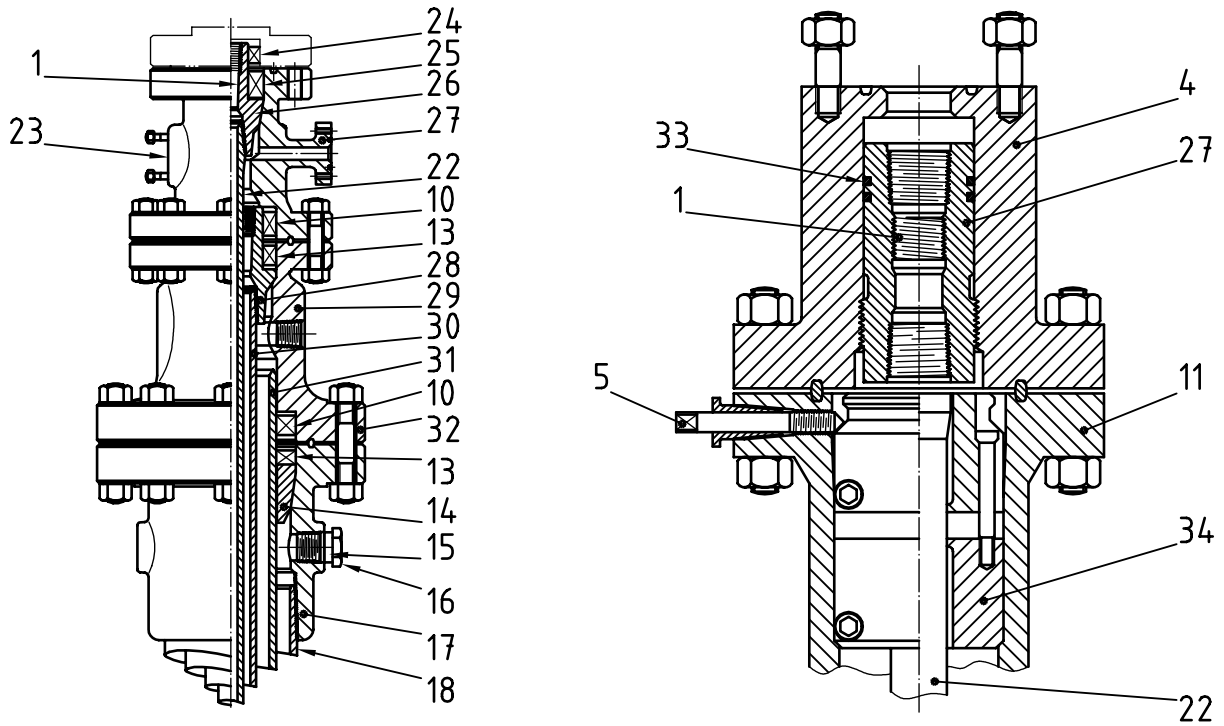
This International Standard establishes requirements for five product specification levels. These five PSL designations define different levels of technical quality requirements. Annex A provides guidelines (not requirements) for selecting an acceptable PSL.



Key

- | | |
|---|---|
| <ul style="list-style-type: none"> 1 Back-pressure valve preparation 2 Subsurface safety valve control line 3 Subsurface safety valve control line outlet 4 Tubing head adapter 5 Lock screw 6 Tubing hanger pack-off 7 Extended neck tubing hanger with downhole safety valve control line 8 Studded side outlet 9 Valve removal preparation 10 Bottom casing pack-off 11 Tubing head spool | <ul style="list-style-type: none"> 12 Double studded adapter 13 Annular casing pack-off 14 Casing hanger (slip style) 15 Threaded outlet connection 16 Bullplug 17 Casing head housing 18 Surface casing 19 Wellhead support plate 20 Tubing pack-off retainer 21 Tubing hanger (slip style) 22 Tubing |
|---|---|

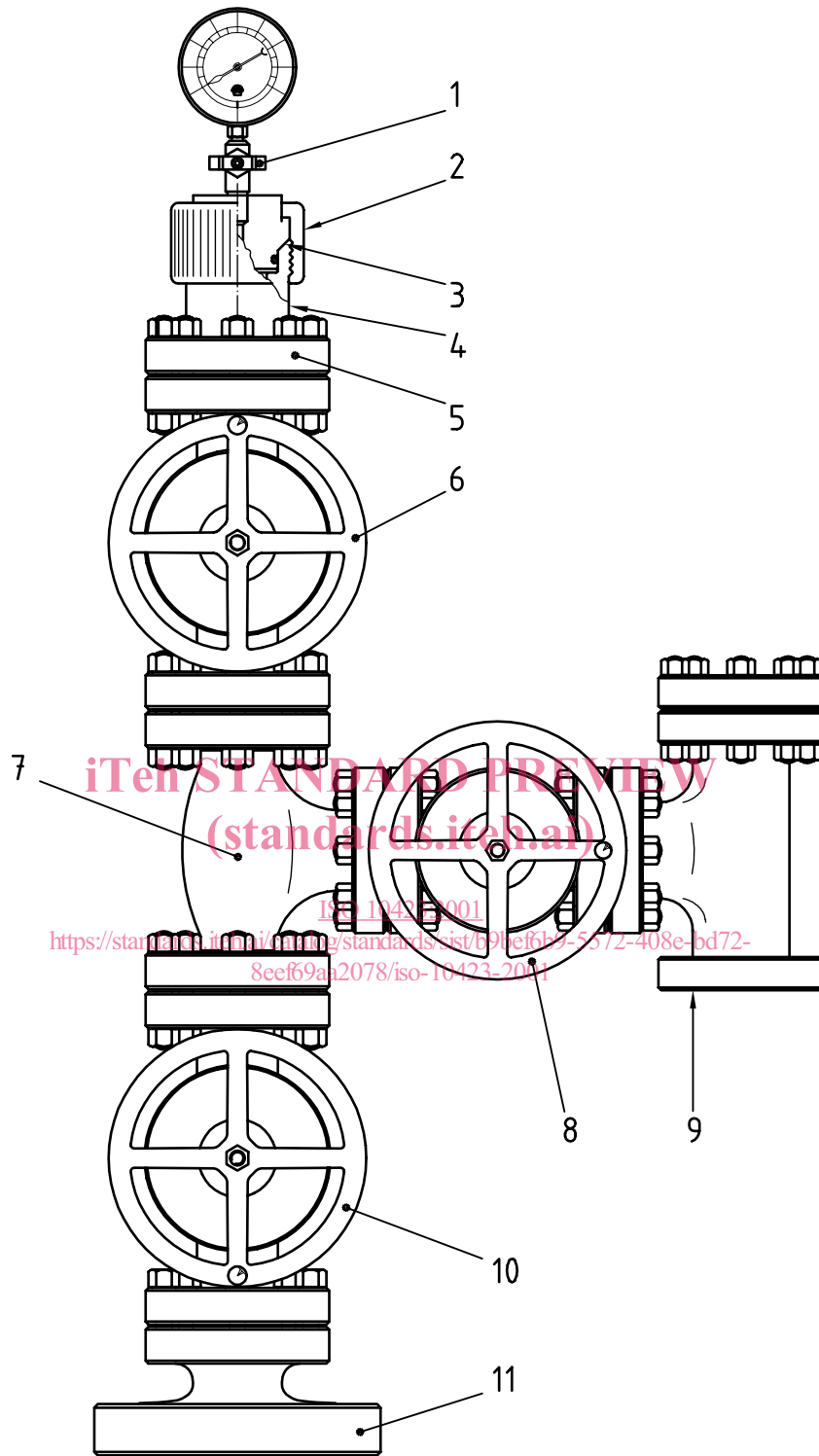
Figure 1 — Typical wellhead assembly nomenclature



Key

- | | |
|-------------------------------------|--------------------------------|
| 23 Studded side outlet connection | 29 Casing head spool |
| 24 Extended neck tubing hanger seal | 30 Inner casing |
| 25 Annular tubing hanger seal | 31 Intermediate casing |
| 26 Tubing hanger mandrel | 32 Flanged end connection |
| 27 Flanged outlet connection | 33 Tubing hanger mandrel seals |
| 28 Casing hanger mandrel | 34 Wrap-around hanger pack-off |

Figure 1 — Typical wellhead assembly nomenclature (continued)



Key

- | | |
|-----------------------|------------------------|
| 1 Gauge valve | 7 Tee |
| 2 Bonnet nut | 8 Wing valve |
| 3 Blanking plug | 9 Choke |
| 4 Body | 10 Master valve |
| 5 Top connector | 11 Tubing head adapter |
| 6 Swab or crown valve | |

Figure 2 — Typical christmas tree nomenclature

2 Normative references

The following normative documents contain provisions which, through reference in this text, constitute provisions of this International Standard. For dated references, subsequent amendments to, or revisions of, any of these publications do not apply. However, parties to agreements based on this International Standard are encouraged to investigate the possibility of applying the most recent editions of the normative documents indicated below. For undated references, the latest edition of the normative document referred to applies. Members of ISO and IEC maintain registers of currently valid International Standards.

ISO 2859-1:1999, *Sampling procedures for inspection by attributes — Part 1: Sampling schemes indexed by acceptance quality limit (AQL) for lot-by-lot inspection.*

ISO 10414-1, *Petroleum and natural gas industries — Field testing of drilling and completion fluids and well cement — Part 1: Water-based fluids.*

ISO 10422, *Petroleum and natural gas industries — Threading, gauging, and thread inspection of casing, tubing and line pipe threads — Specification.*

ISO 11960, *Petroleum and natural gas industries — Steel pipes for use as casing or tubing for wells.*

ISO 13533, *Petroleum and natural gas industries — Drilling and production equipment — Specification for drill-through equipment.*

ISO 13628-4, *Petroleum and natural gas industries — Design and operation of subsea production systems — Part 4: Subsea wellhead and tree equipment.*

ISO 13678, *Petroleum and natural gas industries — Evaluation and testing of thread compounds for use with casing, tubing and line pipe.*

API¹⁾ Spec 7:1997, *Specification for rotary drill stem elements.*

API RP 14F, *Recommended practice for design and installation of electrical systems for offshore fixed and floating production facilities for unclassified and class 1, division 1 and division 2 locations.*

ASME²⁾ B1.1, *Unified inch screw threads.*

ASME B1.2, *Gages and gaging for unified inch screw threads.*

ASME B1.20.1, *Pipe threads, general purpose (inch).*

ASME Boiler and Pressure Vessel Code:1998, Section V, *Non destructive examination.*

ASME Boiler and Pressure Vessel Code:1998, Section VIII, Division 1, *Rules for construction of pressure vessels.*

ASME Boiler and Pressure Vessel Code:1998, Section VIII, Division 2, *Alternative rules for construction of pressure vessels.*

ASME Boiler and Pressure Vessel Code:1998, Section IX, *Welding and brazing qualifications.*

ASNT³⁾ SNT-TC-1A, *Personnel qualifications and certification in non destructive testing.*

1) American Petroleum Institute, 1220 L Street North West, Washington, D.C. 20005, USA.

2) ASME International, 345 East 47th Street New York, NY 10017-2392, USA.

3) American Society for Non destructive Testing, 4153 Arlingate Plaza, Columbus, OH 43228-0518, USA.

- ASTM⁴⁾ A 193/A 193 M, *Standard Specification for Alloy-Steel and Stainless Steel Bolting Materials for High-Temperature Service.*
- ASTM A 194/A 194M, *Standard Specification for Carbon and Alloy Steel Nuts for Bolts for High-Pressure or High-Temperature Service, or Both.*
- ASTM A 320/A 320M, *Standard Specification for Alloy/Steel Bolting Materials for Low-Temperature Service.*
- ASTM A 370, *Standard Test Methods and Definitions for Mechanical Testing of Steel Products.*
- ASTM A 388/A 388M, *Standard Practice for Ultrasonic Examination of Heavy Steel Forgings.*
- ASTM A 453/A 453 M, *Standard Specification for High-Temperature Bolting Materials, With Expansion Coefficients Comparable to Austenitic Stainless Steels.*
- ASTM A 703/A 703M:1999, *Standard Specification for Steel Castings, General Requirements, for Pressure-Containing Parts.*
- ASTM D 395, *Standard Test Methods for Rubber Property — Compression Set.*
- ASTM D 412, *Standard Test Methods for Vulcanized Rubber and Thermoplastic Rubbers and Thermoplastic Elastomers — Tension.*
- ASTM D 471, *Standard Test Method for Rubber Property — Effect of Liquids.*
- ASTM D 1414, *Standard Test Methods for Rubber O-Rings.*
- ASTM D 1415, *Standard Test Method for Rubber Property — International Hardness.*
- ASTM D 1418, *Standard Practice for Rubber and Rubber Latices — Nomenclature.*
- ASTM D 2240, *Standard Test Method for Rubber Property — Durometer Hardness.*
- ASTM E 10, *Standard Test Method for Brinell Hardness of Metallic Materials.*
- ASTM E 18, *Standard Test Methods for Rockwell Hardness and Rockwell Superficial Hardness of Metallic Materials.*
- ASTM E 92, *Standard Test Method for Vickers Hardness of Metallic Materials.*
- ASTM E 94, *Standard Guide for Radiographic Examination.*
- ASTM E 140, *Standard Hardness Conversion Tables for Metals, (Relationship Among Brinell Hardness, Vickers Hardness, Rockwell Hardness, Rockwell Superficial Hardness, Knoop Hardness and Scleroscope Hardness).*
- ASTM E 165, *Standard Test Method for Liquid Penetrant Examination.*
- ASTM E 428, *Standard Practice for Fabrication and Control of Steel Reference Blocks Used in Ultrasonic Inspection.*
- ASTM E 709, *Standard Guide for Magnetic Particle Examination.*
- ASTM E 747, *Standard Practice for Design, Manufacture and Material Grouping Classification of Wire Image Quality Indicators (IQI) Used for Radiology.*

4) American Society for Testing and Materials, 1916 Race Street, Philadelphia, PA 19103-11887, USA.