
Spherical plain bearings —
Part 1:
Radial spherical plain bearings

Rotules lisses —

Partie 1: Rotules lisses radiales

iTeh STANDARD PREVIEW
(standards.iteh.ai)

ISO 12240-1:1998

<https://standards.iteh.ai/catalog/standards/sist/7308a335-bf71-4c28-a760-b6b2c5231e62/iso-12240-1-1998>



Foreword

ISO (the International Organization for Standardization) is a worldwide federation of national standard bodies (ISO member bodies). The work of preparing International Standards is normally carried out through ISO technical committees. Each member body interested in a subject for which a technical committee has been established has the right to be represented on that committee. International organizations, governmental and non-governmental, in liaison with ISO, also take part in the work. ISO collaborates closely with the International Electrotechnical Commission (IEC) on all matters of electrotechnical standardization.

Draft International Standards adopted by the technical committees are circulated to the member bodies for voting. Publication as an International Standard requires approval by at least 75 % of the member bodies casting a vote.

International Standard ISO 12240-1 was prepared by Technical Committee ISO/TC 4, *Rolling bearings*, Subcommittee SC 7, *Spherical plain bearings*.

This first edition cancels and replaces ISO 6124-1:1987, ISO 6124-2:1982, ISO 6124-3:1982 and ISO 6125:1982 of which it constitutes a technical revision. (standards.iteh.ai)

ISO 12240 consists of the following parts, under the general title *Spherical plain bearings*:
[ISO 12240-1:1998](https://standards.iteh.ai/catalog/standards/sist/7308a335-bf71-4c28-a760-b6b2c5231e62/iso-12240-1-1998)

- *Part 1: Radial spherical plain bearings*
- *Part 2: Angular contact radial spherical plain bearings*
- *Part 3: Thrust spherical plain bearings*
- *Part 4: Spherical plain bearing rod ends*

© ISO 1998

All rights reserved. Unless otherwise specified, no part of this publication may be reproduced or utilized in any form or by any means, electronic or mechanical, including photocopying and microfilm, without permission in writing from the publisher.

International Organization for Standardization
Case postale 56 • CH-1211 Genève 20 • Switzerland
Internet iso@iso.ch

Printed in Switzerland

Spherical plain bearings —

Part 1: Radial spherical plain bearings

1 Scope

This part of ISO 12240 specifies dimension series, tolerances and radial internal clearances for radial spherical plain bearings.

The dimensions and tolerances specified in this part of ISO 12240 have been selected to permit the design of radial spherical plain bearings using a wide choice of sliding material combinations.

The specified tolerance values apply to finished, radial spherical plain bearings before any coating, plating, ring splitting or ring fracturing.

In the case of surface treated radial spherical plain bearings, there may be slight deviations from the specified tolerance values.

Radial spherical plain bearings need not conform to the designs illustrated but compliance is required as regards the dimensions, tolerances and radial internal clearances specified.

NOTE — Spherical plain bearings for airframe applications are not covered by this part of ISO 12240.

2 Normative references

The following standards contain provisions which, through reference in this text, constitute provisions of this part of ISO 12240. At the time of publication, the editions indicated were valid. All standards are subject to revision, and parties to agreements based on this part of ISO 12240 are encouraged to investigate the possibility of applying the most recent editions of the standards indicated below. Members of IEC and ISO maintain registers of currently valid International Standards.

ISO 582:1995, *Rolling bearings – Chamfer dimensions – Maximum values*.

ISO 1132-1:—¹⁾, *Rolling bearings – Tolerances – Part 1: Terms and definitions*.

ISO 6811:1998, *Spherical plain bearings – Vocabulary*.

ISO 12240-4:1998, *Spherical plain bearings – Part 4: Spherical plain bearing rod ends*.

1) To be published. (Revision of ISO 1132:1980)

3 Definitions and symbols

For the purposes of this part of ISO 12240, the definitions given in ISO 1132-1 and ISO 6811 apply. The symbols (except those for tolerances) shown in the figures and the values given in the tables denote nominal dimensions unless specified otherwise.

B	Inner ring width
C	Outer ring width
D	Outside diameter
d	Bore diameter
d_1	Outside diameter of inner ring face
d_k	Sphere diameter
$r_{s \min}^{2)}$	Smallest single chamfer dimension, inner ring
$r_{1s \min}^{2)}$	Smallest single chamfer dimension, outer ring
V_{Dmp}	Variation of mean outside diameter
V_{dmp}	Variation of mean bore diameter
V_{Dp}	Variation of outside diameter in a single radial plane
V_{dp}	Variation of bore diameter in a single radial plane
α	Angle of tilt
Δ_{Bs}	Deviation of a single inner ring width
Δ_{Cs}	Deviation of a single outer ring width
Δ_{Dmp}	Deviation of mean outside diameter in a single plane
Δ_{dmp}	Deviation of mean bore diameter in a single plane

4 Angles of tilt, α

The specified angles of tilt (approximate values) represent the angles by which the axes of the inner ring and of the outer ring may be inclined in relation to each other without reducing the projected theoretical contact area of the two bearing rings when the two ring axes are parallel to each other.

NOTE — Attention is drawn to the fact that after mounting a radial spherical plain bearing on a shaft and into a housing, the angle through which the bearing can tilt may be restricted by the design of the adjacent components.

2) The corresponding maximum chamfer dimensions are given in table 1 of ISO 582:1985.

5 Dimensions, tolerances and radial internal clearances

5.1 Dimensions

See figures 1 and 2, and tables 1 to 6.

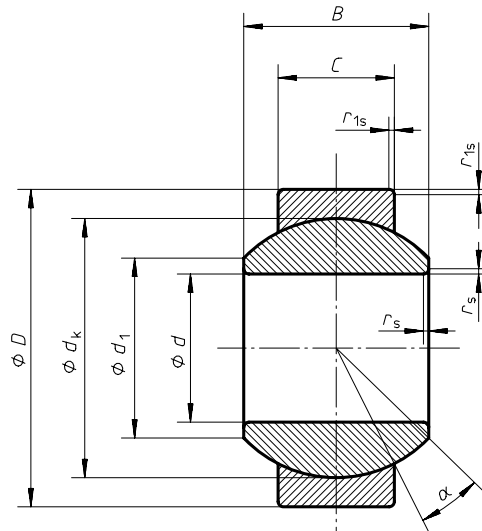


Figure 1 — Radial spherical plain bearings, dimension series E, G, C, K, H
(standards.iteh.ai)

ISO 12240-1:1998

<https://standards.iteh.ai/catalog/standards/sist/7308a335-bf71-4c28-a760-b6b2c5231e62/iso-12240-1-1998>

Table 1 — Radial spherical plain bearings, dimension series E

d mm	D mm	B mm	C mm	d_1 ≈ mm	d_k 1) mm	r_s min. mm	r_{1s} min. mm	α ≈ °
4	12	5	3	6	8	0,3	0,3	16
5	14	6	4	8	10	0,3	0,3	13
6	14	6	4	8	10	0,3	0,3	13
8	16	8	5	10	13	0,3	0,3	15
10	19	9	6	13	16	0,3	0,3	12
12	22	10	7	15	18	0,3	0,3	10
15	26	12	9	18	22	0,3	0,3	8
17	30	14	10	20	25	0,3	0,3	10
20	35	16	12	24	29	0,3	0,3	9
25	42	20	16	29	35	0,6	0,6	7
30	47	22	18	34	40	0,6	0,6	6
35	55	25	20	39	47	0,6	1	6
40	62	28	22	45	53	0,6	1	7
45	68	32	25	50	60	0,6	1	7
50	75	35	28	55	66	0,6	1	6
55	85	40	32	62	74	0,6	1	7
60	90	44	36	66	80	1	1	6
70	105	49	40	77	92	1	1	6
80	120	55	45	88	105	1	1	6
90	130	60	50	98	115	1	1	5
100	150	70	55	109	130	1	1	7
110	160	70	55	120	140	1	1	6
120	180	85	70	130	160	1	1	6
140	210	90	70	150	180	1	1	7
160	230	105	80	170	200	1	1	8
180	260	105	80	192	225	1,1	1,1	6
200	290	130	100	212	250	1,1	1,1	7
220	320	135	100	238	275	1,1	1,1	8
240	340	140	100	265	300	1,1	1,1	8
260	370	150	110	285	325	1,1	1,1	7
280	400	155	120	310	350	1,1	1,1	6
300	430	165	120	330	375	1,1	1,1	7

1) Reference only.

Table 2 — Radial spherical plain bearings, dimension series G

d	D	B	C	d_1	d_k ¹⁾	r_s	r_{1s}	α
mm	mm	mm	mm	≈ mm	mm	min. mm	min. mm	≈ °
4	14	7	4	7	10	0,3	0,3	20
5	14	7	4	7	10	0,3	0,3	20
6	16	9	5	9	13	0,3	0,3	21
8	19	11	6	11	16	0,3	0,3	21
10	22	12	7	13	18	0,3	0,3	18
12	26	15	9	16	22	0,3	0,3	18
15	30	16	10	19	25	0,3	0,3	16
17	35	20	12	21	29	0,3	0,3	19
20	42	25	16	24	35	0,3	0,6	17
25	47	28	18	29	40	0,6	0,6	17
30	55	32	20	34	47	0,6	1	17
35	62	35	22	39	53	0,6	1	16
40	68	40	25	44	60	0,6	1	17
45	75	43	28	50	66	0,6	1	15
50	90	56	36	57	80	0,6	1	17
60	105	63	40	67	92	1	1	17
70	120	70	45	77	105	1	1	16
80	130	75	50	87	115	1	1	14
90	150	85	55	98	130	1	1	15
100	160	85	55	110	140	1	1	14
110	180	100	70	122	160	1	1	12
120	210	115	70	132	180	1	1	16
140	230	130	80	151	200	1	1	16
160	260	135	80	176	225	1	1,1	16
180	290	155	100	196	250	1,1	1,1	14
200	320	165	100	220	275	1,1	1,1	15
220	340	175	100	243	300	1,1	1,1	16
240	370	190	110	263	325	1,1	1,1	15
260	400	205	120	283	350	1,1	1,1	15
280	430	210	120	310	375	1,1	1,1	15

1) Reference only.

Table 3 — Radial spherical plain bearings, dimension series C

d mm	D mm	B mm	C mm	d_1 ≈ mm	d_k 1) mm	r_s min. mm	r_{1s} min. mm	α ≈ °
320	440	160	135	340	375	1,1	3	4
340	460	160	135	360	390	1,1	3	3
360	480	160	135	380	410	1,1	3	3
380	520	190	160	400	440	1,5	4	4
400	540	190	160	425	465	1,5	4	3
420	560	190	160	445	480	1,5	4	3
440	600	218	185	465	515	1,5	4	3
460	620	218	185	485	530	1,5	4	3
480	650	230	195	510	560	2	5	3
500	670	230	195	530	580	2	5	3
530	710	243	205	560	610	2	5	3
560	750	258	215	590	645	2	5	4
600	800	272	230	635	690	2	5	3
630	850	300	260	665	730	3	6	3
670	900	308	260	710	770	3	6	3
710	950	325	275	755	820	3	6	3
750	1 000	335	280	800	870	3	6	3
850	1 120	365	310	905	975	3	6	3
900	1 180	375	320	960	1 030	3	6	3
950	1 250	400	340	1 015	1 090	4	7,5	3
1 000	1 320	438	370	1 065	1 150	4	7,5	3
1 060	1 400	462	390	1 130	1 220	4	7,5	3
1 120	1 460	462	390	1 195	1 280	4	7,5	3
1 180	1 540	488	410	1 260	1 350	4	7,5	3
1 250	1 630	515	435	1 330	1 425	4	7,5	3
1 320	1 720	545	460	1 405	1 510	4	7,5	3
1 400	1 820	585	495	1 485	1 600	5	9,5	3
1 500	1 950	625	530	1 590	1 710	5	9,5	3
1 600	2 060	670	565	1 690	1 820	5	9,5	3
1 700	2 180	710	600	1 790	1 925	5	9,5	3
1 800	2 300	750	635	1 890	2 035	6	12	3
1 900	2 430	790	670	2 000	2 150	6	12	3
2 000	2 570	835	705	2 100	2 260	6	12	3

1) Reference only.

Table 4 — Radial spherical plain bearings, dimension series K

d mm	D mm	B mm	C mm	d_1 ≈ mm	d_k 1) mm	r_s min. mm	r_{1s} min. mm	α ≈ °
3	10	6	4,5	5,1	7,9	0,2	0,2	14
5	13	8	6	7,7	11,1	0,3	0,3	13
6	16	9	6,75	8,9	12,7	0,3	0,3	13
8	19	12	9	10,3	15,8	0,3	0,3	14
10	22	14	10,5	12,9	19	0,3	0,3	13
12	26	16	12	15,4	22,2	0,3	0,3	13
14	29	19	13,5	16,8	25,4	0,3	0,3	16
16	32	21	15	19,3	28,5	0,3	0,3	15
18	35	23	16,5	21,8	31,7	0,3	0,3	15
20	40	25	18	24,3	34,9	0,3	0,6	14
22	42	28	20	25,8	38,1	0,3	0,6	15
25	47	31	22	29,5	42,8	0,3	0,6	15
30	55	37	25	34,8	50,8	0,3	0,6	17
35	65	43	30	40,3	59	0,6	1	16
40	72	49	35	44,2	66	0,6	1	16
50	90	60	45	55,8	82	0,6	1	14
NOTE — Bearings of this series are incorporated in spherical plain bearing rod ends according to ISO 12240-4:1998, table 5.								