

---

**Geografske informacije - Lokacijske storitve (ISO 19116:2004)**

Geographic information - Positioning services (ISO 19116:2004)

Geoinformation - Positionierung (ISO 19116:2004)

Information géographique - Services de positionnement (ISO 19116:2004)

**Ta slovenski standard je istoveten z: EN ISO 19116:2006**[SIST EN ISO 19116:2006](https://standards.iteh.ai/catalog/standards/sist/d5c88e70-4cad-4344-ae26-7d0ba0c7d1f6/sist-en-iso-19116-2006)<https://standards.iteh.ai/catalog/standards/sist/d5c88e70-4cad-4344-ae26-7d0ba0c7d1f6/sist-en-iso-19116-2006>**ICS:**

07.040	Astronomija. Geodezija. Geografija	Astronomy. Geodesy. Geography
35.240.70	Uporabniške rešitve IT v znanosti	IT applications in science

**SIST EN ISO 19116:2006****en**

**iTeh STANDARD PREVIEW**  
**(standards.iteh.ai)**

SIST EN ISO 19116:2006

<https://standards.iteh.ai/catalog/standards/sist/d5c88e70-4cad-4344-ac26-7d0ba0c7d1fe/sist-en-iso-19116-2006>

EUROPEAN STANDARD  
NORME EUROPÉENNE  
EUROPÄISCHE NORM

**EN ISO 19116**

March 2006

ICS 35.240.70

English Version

**Geographic information - Positioning services (ISO 19116:2004)**

Information géographique - Services de positionnement  
(ISO 19116:2004)

Geoinformation - Positionierung (ISO 19116:2004)

This European Standard was approved by CEN on 16 February 2006.

CEN members are bound to comply with the CEN/CENELEC Internal Regulations which stipulate the conditions for giving this European Standard the status of a national standard without any alteration. Up-to-date lists and bibliographical references concerning such national standards may be obtained on application to the Central Secretariat or to any CEN member.

This European Standard exists in three official versions (English, French, German). A version in any other language made by translation under the responsibility of a CEN member into its own language and notified to the Central Secretariat has the same status as the official versions.

CEN members are the national standards bodies of Austria, Belgium, Cyprus, Czech Republic, Denmark, Estonia, Finland, France, Germany, Greece, Hungary, Iceland, Ireland, Italy, Latvia, Lithuania, Luxembourg, Malta, Netherlands, Norway, Poland, Portugal, Romania, Slovakia, Slovenia, Spain, Sweden, Switzerland and United Kingdom.

<https://standards.iteh.ai/catalog/standards/sist/d5c88e70-4cad-4344-ac26-7d0ba0c7d1f6/sist-en-iso-19116-2006>



EUROPEAN COMMITTEE FOR STANDARDIZATION  
COMITÉ EUROPÉEN DE NORMALISATION  
EUROPÄISCHES KOMITEE FÜR NORMUNG

**Management Centre: rue de Stassart, 36 B-1050 Brussels**

## EN ISO 19116:2006 (E)

**Foreword**

The text of ISO 19116:2004 has been prepared by Technical Committee ISO/TC 211 "Geographic information/Geomatics" of the International Organization for Standardization (ISO) and has been taken over as EN ISO 19116:2006 by Technical Committee CEN/TC 287 "Geographic Information", the secretariat of which is held by NEN.

This European Standard shall be given the status of a national standard, either by publication of an identical text or by endorsement, at the latest by September 2006, and conflicting national standards shall be withdrawn at the latest by September 2006.

According to the CEN/CENELEC Internal Regulations, the national standards organizations of the following countries are bound to implement this European Standard: Austria, Belgium, Cyprus, Czech Republic, Denmark, Estonia, Finland, France, Germany, Greece, Hungary, Iceland, Ireland, Italy, Latvia, Lithuania, Luxembourg, Malta, Netherlands, Norway, Poland, Portugal, Romania, Slovakia, Slovenia, Spain, Sweden, Switzerland and United Kingdom.

**Endorsement notice**

The text of ISO 19116:2004 has been approved by CEN as EN ISO 19116:2006 without any modifications.

SIST EN ISO 19116:2006

<https://standards.iteh.ai/catalog/standards/sist/d5c88e70-4cad-4344-ac26-7d0ba0c7d1f6/sist-en-iso-19116-2006>

# INTERNATIONAL STANDARD

**ISO**  
**19116**

First edition  
2004-07-01

---

---

## Geographic information — Positioning services

*Information géographique — Services de positionnement*

**iTeh STANDARD PREVIEW**  
**(standards.iteh.ai)**

[SIST EN ISO 19116:2006](https://standards.iteh.ai/catalog/standards/sist/d5c88e70-4cad-4344-ac26-7d0ba0c7d1f6/sist-en-iso-19116-2006)

<https://standards.iteh.ai/catalog/standards/sist/d5c88e70-4cad-4344-ac26-7d0ba0c7d1f6/sist-en-iso-19116-2006>



Reference number  
ISO 19116:2004(E)

© ISO 2004

## ISO 19116:2004(E)

**PDF disclaimer**

This PDF file may contain embedded typefaces. In accordance with Adobe's licensing policy, this file may be printed or viewed but shall not be edited unless the typefaces which are embedded are licensed to and installed on the computer performing the editing. In downloading this file, parties accept therein the responsibility of not infringing Adobe's licensing policy. The ISO Central Secretariat accepts no liability in this area.

Adobe is a trademark of Adobe Systems Incorporated.

Details of the software products used to create this PDF file can be found in the General Info relative to the file; the PDF-creation parameters were optimized for printing. Every care has been taken to ensure that the file is suitable for use by ISO member bodies. In the unlikely event that a problem relating to it is found, please inform the Central Secretariat at the address given below.

## iTeh STANDARD PREVIEW (standards.iteh.ai)

SIST EN ISO 19116:2006

<https://standards.iteh.ai/catalog/standards/sist/d5c88e70-4cad-4344-ac26-7d0ba0c7d1fe/sist-en-iso-19116-2006>

© ISO 2004

All rights reserved. Unless otherwise specified, no part of this publication may be reproduced or utilized in any form or by any means, electronic or mechanical, including photocopying and microfilm, without permission in writing from either ISO at the address below or ISO's member body in the country of the requester.

ISO copyright office  
Case postale 56 • CH-1211 Geneva 20  
Tel. + 41 22 749 01 11  
Fax + 41 22 749 09 47  
E-mail [copyright@iso.org](mailto:copyright@iso.org)  
Web [www.iso.org](http://www.iso.org)

Published in Switzerland

# Contents

Page

Foreword .....	iv
Introduction .....	v
1 Scope .....	1
2 Conformance .....	1
3 Normative references .....	1
4 Terms and definitions .....	2
5 Symbols, abbreviations and UML notations .....	6
5.1 Symbols and abbreviated terms .....	6
5.2 UML Notations .....	7
5.3 UML model stereotypes .....	7
5.4 Package abbreviations .....	8
6 Positioning services model .....	8
6.1 Introduction .....	8
6.2 Static data structures of positioning services classes .....	9
6.3 Positioning services operations .....	10
6.4 Basic and Extended Information .....	13
7 Basic information definition and description .....	14
7.1 Introduction .....	14
7.2 System Information .....	15
7.3 Session .....	19
7.4 Mode of operation .....	20
7.5 Quality information .....	35
8 Technology-specific information .....	38
8.1 Introduction .....	38
8.2 GNSS Operating Conditions .....	38
8.3 Raw measurement data .....	43
Annex A (normative) Conformance .....	44
Annex B (informative) Implementing accuracy reports for positioning services .....	47
Bibliography .....	51

## Foreword

ISO (the International Organization for Standardization) is a worldwide federation of national standards bodies (ISO member bodies). The work of preparing International Standards is normally carried out through ISO technical committees. Each member body interested in a subject for which a technical committee has been established has the right to be represented on that committee. International organizations, governmental and non-governmental, in liaison with ISO, also take part in the work. ISO collaborates closely with the International Electrotechnical Commission (IEC) on all matters of electrotechnical standardization.

International Standards are drafted in accordance with the rules given in the ISO/IEC Directives, Part 2.

The main task of technical committees is to prepare International Standards. Draft International Standards adopted by the technical committees are circulated to the member bodies for voting. Publication as an International Standard requires approval by at least 75 % of the member bodies casting a vote.

Attention is drawn to the possibility that some of the elements of this document may be the subject of patent rights. ISO shall not be held responsible for identifying any or all such patent rights.

ISO 19116 was prepared by Technical Committee ISO/TC 211, *Geographic information/Geomatics*.

## iTeh STANDARD PREVIEW (standards.iteh.ai)

[SIST EN ISO 19116:2006](https://standards.iteh.ai/catalog/standards/sist/d5c88e70-4cad-4344-ac26-7d0ba0c7d1f6/sist-en-iso-19116-2006)

<https://standards.iteh.ai/catalog/standards/sist/d5c88e70-4cad-4344-ac26-7d0ba0c7d1f6/sist-en-iso-19116-2006>

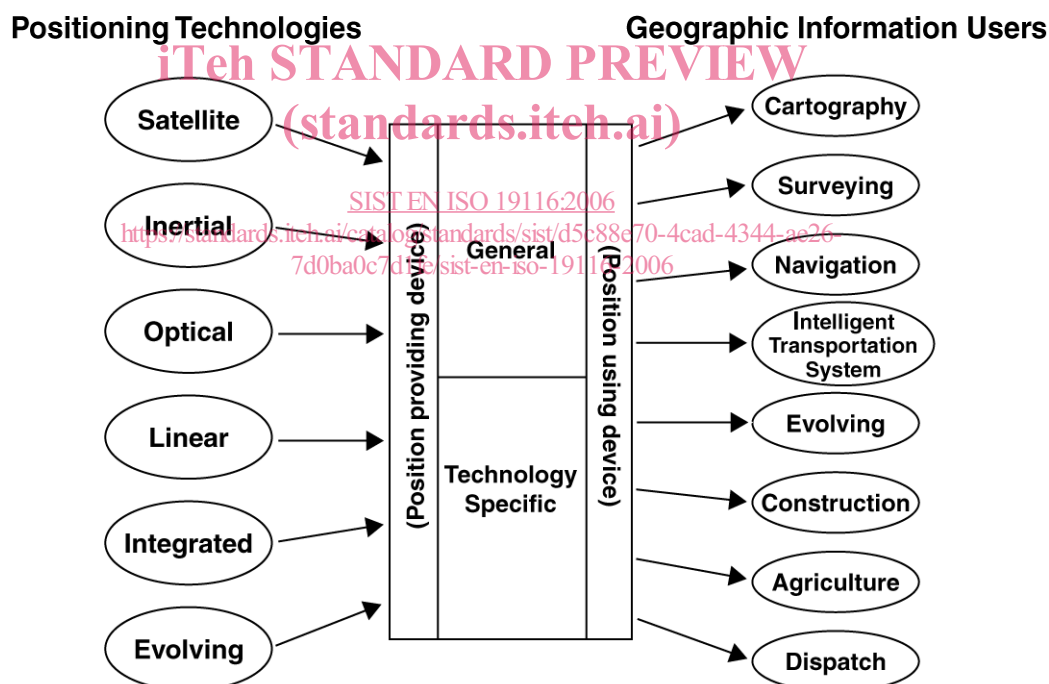


## Introduction

### 0.1 General

Positioning services are among the processing services identified in ISO 19119. Processing services include services that are computationally oriented and operate upon the elements from the model domain, rather than being directly integrated in the model domain itself. This International Standard defines and describes the positioning service. Other services in this domain are coordinate transformation, metric translation, format conversion, semantic translation, etc.

Positioning services employ a wide variety of technologies that provide position and related information to a similarly wide variety of applications, as depicted in Figure 1. Although these technologies differ in many respects, there are important items of information that are common among them and serve common needs of these application areas, such as the position data, time of observation and its accuracy. Also, there are items of information that apply only to specific technologies and are sometimes required in order to make correct use of the positioning results, such as signal strength, geometry factors, and raw measurements. Therefore, this International Standard includes both general data elements that are applicable to a wide variety of positioning services and technology specific elements that are relevant to particular technologies.



**Figure 1 — Positioning services interface allows communication of position data for a wide variety of positioning technologies and users**

Modern electronic positioning technology can measure the coordinates of a location on or near the Earth with great speed and accuracy, thereby allowing geographic information systems to be populated with any number of objects. However, the technologies for position determination have had neither a common structure for expression of position information, nor a common structure for expression of accuracy. The positioning-services interface specified in this International Standard provides data structures and operations that allow spatially oriented systems, such as GIS, to employ these technologies with greater efficiency by permitting interoperability among various implementations and various technologies.

## ISO 19116:2004(E)

This interface may be applied to communication among any of the components of systems that generate and use position information. Such systems may incorporate an instrument providing position updates to one or more position-using devices for data processing, storage, and display. For example, a navigation display system may include recording functions that store the history of a vehicle's movement, processing tools that compute guidance updates along a planned course relying on stored waypoints, and a display device that provides the navigator with current position, computed guidance information, and cartography from stored coordinate information. This International Standard specifies an interface that carries position and related information among any of these components, and should be sufficient for communication between the position providing device and any connected position using devices. Additional interfaces may also exist in such a system, for example providing for cartographic portrayal of stored coordinate information, which are outside the scope of this International Standard.

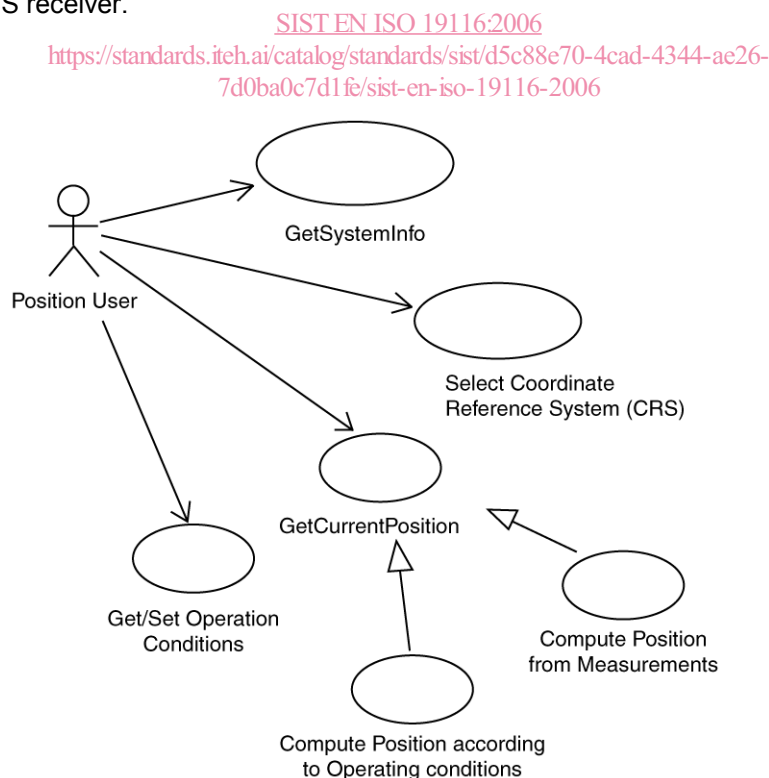
Standard positioning services provide client systems with operations that access positioning results and related information in a uniform manner, isolating the client from the multiplicity of protocols that may be employed to communicate with the positioning instruments. For example, a realized-positioning service could communicate with a GNSS receiver using the well-known NMEA 0183 protocol, translate the information, and provide the positioning results to a geographic information display client through the ISO 19116 standard interface specified in this document. Another realized-positioning service could communicate with a GNSS receiver using a manufacturer's proprietary binary protocol. Through the use of standardized positioning service interfaces, the hardware communication protocols become transparent to the client application.

Evolution of new communication protocols that closely follow the data structures described in this International Standard is also anticipated. Such communication standards will facilitate efficient fulfilment of the information requirements of the positioning services interface and facilitate modular interchangeability of the positioning technology components.

## 0.2 Potential use of the service

**ITeh STANDARD PREVIEW**  
(standards.iteh.ai)

The application of this International Standard is illustrated in Figure 2 by a simplified case for a user obtaining coordinates from a GNSS receiver.



**Figure 2 — Use case for getting coordinates from a positioning service**

First, the positioning service device transmits system-identification data so that the user can determine the type of positioning system, in this case a GNSS receiver, and whether the system is operational.

Next, the user sets the GNSS receiver to provide coordinates in the desired Coordinate Reference System (CRS) through the interface by performing setMode operations. For instance, the coordinate reference system could be set to NAD27 Virginia State Plane, North Zone, US Survey feet. Note that by using well-recognized CRS names in accordance with the ISO 19111 structure, the user avoids some of the complexity of the definition of the coordinate reference system by using a named datum and mapping projection, and the system interprets these and loads predefined set of parameters.

By performing technology-specific setOperatingConditions operations, the user also sets certain operating conditions of the system so that the position determination will be performed in a desired manner. For example, the user sets the satellite-elevation mask of the GNSS receiver so that satellites that are at low angles in the sky, and consequently, more affected by signal passage through the atmosphere, are excluded from the computation. Certain other operating conditions, such as the current actual positions of available satellites, are not controllable by the user and are determined by the system.

The system then performs measurements according to the operating conditions of the signal from the GNSS satellites and uses these measurements to compute a position cast in the specified Coordinate Reference System.

Finally, the computed position is reported to the user through the PS\_Observation data object.

The positioning system also reports on certain operating conditions to help the user decide whether to use the position value. For example, one of the indicators of solution quality is the dilution of precision (DOP) value, which is based on the geometry of the satellites observed to determine the position.

Communication of this information is performed through the standard data structures to the user's display device, which portrays it to the user.

[SIST EN ISO 19116:2006](https://standards.iteh.ai/catalog/standards/sist/d5c88e70-4cad-4344-ac26-7d0ba0c7d1f6/sist-en-iso-19116-2006)

<https://standards.iteh.ai/catalog/standards/sist/d5c88e70-4cad-4344-ac26-7d0ba0c7d1f6/sist-en-iso-19116-2006>

**iTeh STANDARD PREVIEW**  
**(standards.iteh.ai)**

SIST EN ISO 19116:2006

<https://standards.iteh.ai/catalog/standards/sist/d5c88e70-4cad-4344-ac26-7d0ba0c7d1fe/sist-en-iso-19116-2006>

# Geographic information — Positioning services

## 1 Scope

This International Standard specifies the data structure and content of an interface that permits communication between position-providing device(s) and position-using device(s) so that the position-using device(s) can obtain and unambiguously interpret position information and determine whether the results meet the requirements of the use. A standardized interface of geographic information with position allows the integration of positional information from a variety of positioning technologies into a variety of geographic information applications, such as surveying, navigation and intelligent transportation systems. This International Standard will benefit a wide range of applications for which positional information is important.

## 2 Conformance

This International Standard defines two levels of conformance: Basic (that all implementations shall meet) and Extended (for technology-specific data related to a positioning system). Any positioning services implementation or product claiming conformance with this part of the International Standard shall pass all the requirements described in the corresponding abstract test suite set forth in Annex A.

## 3 Normative references

[SIST EN ISO 19116:2006](https://standards.iteh.ai/catalog/standards/sist/d5c88e70-4cad-4344-ac26-7d0ba0c7d1f6/sist-en-iso-19116-2006)

[https://standards.iteh.ai/catalog/standards/sist/d5c88e70-4cad-4344-ac26-](https://standards.iteh.ai/catalog/standards/sist/d5c88e70-4cad-4344-ac26-7d0ba0c7d1f6/sist-en-iso-19116-2006)

[7d0ba0c7d1f6/sist-en-iso-19116-2006](https://standards.iteh.ai/catalog/standards/sist/d5c88e70-4cad-4344-ac26-7d0ba0c7d1f6/sist-en-iso-19116-2006)

The following referenced documents are indispensable for the application of this document. For dated references, only the edition cited applies. For undated references, the latest edition of the referenced document (including any amendments) applies.

ISO 1000:1992, *SI units and recommendations for the use of their multiples and of certain other units*

ISO/TS 19103:—<sup>1)</sup>, *Geographic information — Conceptual schema language*

ISO 19108:2002, *Geographic information — Temporal schema*

ISO 19111:2003, *Geographic information — Spatial referencing by coordinates*

ISO 19113:2002, *Geographic information — Quality principles*

ISO 19114:2003, *Geographic information — Quality evaluation procedures*

ISO 19115:2003, *Geographic information — Metadata*

1) To be published.

## ISO 19116:2004(E)

## 4 Terms and definitions

For the purposes of this document, the following terms and definitions apply.

### 4.1

#### **accuracy**

closeness of agreement between a test result and the accepted reference value

[ISO 3534-1]

NOTE For positioning services, the test result is a measured value or set of values.

### 4.2

#### **attitude**

orientation of a body, described by the angles between the axes of that body's **coordinate system** (4.5) and the axes of an external **coordinate system** (4.5)

NOTE In positioning services, this is usually the orientation of the user's platform, such as an aircraft, boat, or automobile.

### 4.3

#### **coordinate**

one of a sequence of  $n$  numbers designating the position of a point in  $n$ -dimensional space

[ISO 19111]

NOTE In a coordinate reference system, the numbers must be qualified by units.

### 4.4

#### **coordinate reference system**

**coordinate system** (4.5) that is related to the real world by a **datum** (4.6)

[ISO 19111]

NOTE For geodetic and vertical datums, it will be related to the Earth.

### 4.5

#### **coordinate system**

set of mathematical rules for specifying how **coordinates** (4.3) are to be assigned to points

[ISO 19111]

### 4.6

#### **datum**

parameter or set of parameters that serve as a reference or basis for the calculation of other parameters

[ISO 19111]

NOTE 1 A datum defines the position of the origin, the scale, and the orientation of the axes of a coordinate system.

NOTE 2 A datum may be a geodetic datum, a vertical datum or an engineering datum.

### 4.7

#### **ellipsoidal height**

#### **geodetic height**

$h$

distance of a point from the ellipsoid measured along the perpendicular from the ellipsoid to this point, positive if upwards or outside of the ellipsoid

[ISO 19111]

NOTE Only used as part of a three-dimensional geodetic coordinate system and never on its own.

**4.8****geodetic datum**

**datum** (4.6) describing the relationship of a **coordinate system** (4.5) to the Earth

[ISO 19111]

NOTE In most cases, the geodetic datum includes an ellipsoid definition.

**4.9****gravity-related height**

$H$

**height** (4.10) dependent on the Earth's gravity field

[ISO 19111]

NOTE In particular, orthometric height or normal height, which are both approximations of the distance of a point above the mean sea level.

**4.10****height****altitude**

$h$

$H$

distance of a point from a chosen reference surface along a line perpendicular to that surface

[ISO 19111]

iTeh STANDARD PREVIEW

NOTE 1 See ellipsoidal height and gravity-related height.

NOTE 2 Height of a point outside the surface treated as positive; negative height is designated as depth.

[SIST EN ISO 19116:2006](https://standards.iteh.ai/catalog/standards/sist/d5c88e70-4cad-4344-ac26-7d0ba0c7d1fe/sist-en-iso-19116-2006)

**4.11****inertial positioning system**

**positioning system** (4.21) employing accelerometers, gyroscopes, and computers as integral components to determine **coordinates** (4.3) of points or objects relative to an initial known reference point

**4.12****integrated positioning system**

**positioning system** (4.21) incorporating two or more positioning technologies

NOTE The measurements produced by each positioning technology in an integrated system may be of any position, motion, or attitude. There may be redundant measurements. When combined, a unified position, motion, or attitude is determined.

**4.13****linear positioning system**

**positioning system** (4.21) that measures distance from a reference point along a route

EXAMPLE An odometer used in conjunction with predefined mile or kilometre origin points along a route and provides a linear reference to a position.

**4.14****linear reference system**

reference system that identifies a location by reference to a segment of a linear geographic feature and distance along that segment from a given point

NOTE Linear reference systems are widely used in transportation, for example highway names and mile or kilometre markers.