



SLOVENSKI STANDARD
SIST EN 50131-2-4:2008/IS1:2014
01-april-2014

Alarmni sistemi - Sistemi za javljanje vloma in ropa - 2-4. del: Zahteve za kombinirane pasivne infrardeče in mikrovalovne javljalnike - Dopolnilo IS1

Alarm systems - Intrusion and hold-up systems -- Part 2-4: Requirements for combined passive infrared and microwave detectors

Alarmanlagen - Einbruch- und Überfallmeldeanlagen -- Teil 2-4: Anforderungen an Passiv-Infrarotdualmelder und Mikrowellenmelder

Systèmes d'alarme - Systèmes d'alarme contre l'intrusion et les hold-up - Partie 2-4: Exigences pour détecteurs combinés à infrarouges passifs et à hyperfréquences

<https://standards.iteh.ai/catalog/standards/sist/6cd08fdb-8135-49ef-a80f-37b87eba335f/sist-en-50131-2-4-2008-is1-2014>

Ta slovenski standard je istoveten z: EN 50131-2-4:2008/IS1:2014

ICS:

13.310	Varstvo pred kriminalom	Protection against crime
13.320	Alarmni in opozorilni sistemi	Alarm and warning systems

SIST EN 50131-2-4:2008/IS1:2014 **en,fr**

iTeh STANDARD PREVIEW
(standards.iteh.ai)

[SIST EN 50131-2-4:2008/IS1:2014](https://standards.iteh.ai/catalog/standards/sist/6cd08fdb-8135-49ef-a80f-37b87eba335f/sist-en-50131-2-4-2008-is1-2014)

<https://standards.iteh.ai/catalog/standards/sist/6cd08fdb-8135-49ef-a80f-37b87eba335f/sist-en-50131-2-4-2008-is1-2014>

INTERPRETATION SHEET

EN 50131-2-4/IS1

FEUILLE D'INTERPRETATION

INTERPRETATIONSBLATT

February 2014

ICS 13.310

English version

**Alarm systems -
Intrusion and hold-up systems -
Part 2-4: Requirements for combined passive infrared
and microwave detectors**

Systèmes d'alarme -
Systèmes d'alarme contre l'intrusion et les
hold-up -
Partie 2-4: Exigences pour détecteurs
combinés à infrarouges passifs et à
hyperfréquences

Alarmanlagen -
Einbruch- und Überfallmeldeanlagen -
Teil 2-4: Anforderungen an Passiv-
Infrarotdualmelder und Mikrowellenmelder

iTeh STANDARD PREVIEW
(standards.iteh.ai)

[SIST EN 50131-2-4:2008/IS1:2014](https://standards.iteh.ai/catalog/standards/sist/6cd08fdb-8135-49ef-a80f-37b87eba335f/sist-en-50131-2-4-2008-is1-2014)

<https://standards.iteh.ai/catalog/standards/sist/6cd08fdb-8135-49ef-a80f-37b87eba335f/sist-en-50131-2-4-2008-is1-2014>

This European Standard was approved by CENELEC on 2013-12-23. CENELEC members are bound to comply with the CEN/CENELEC Internal Regulations which stipulate the conditions for giving this European Standard the status of a national standard without any alteration.

Up-to-date lists and bibliographical references concerning such national standards may be obtained on application to the CEN-CENELEC Management Centre or to any CENELEC member.

This European Standard exists in three official versions (English, French, German). A version in any other language made by translation under the responsibility of a CENELEC member into its own language and notified to the CEN-CENELEC Management Centre has the same status as the official versions.

CENELEC members are the national electrotechnical committees of Austria, Belgium, Bulgaria, Croatia, Cyprus, the Czech Republic, Denmark, Estonia, Finland, Former Yugoslav Republic of Macedonia, France, Germany, Greece, Hungary, Iceland, Ireland, Italy, Latvia, Lithuania, Luxembourg, Malta, the Netherlands, Norway, Poland, Portugal, Romania, Slovakia, Slovenia, Spain, Sweden, Switzerland, Turkey and the United Kingdom.

CENELEC

European Committee for Electrotechnical Standardization
Comité Européen de Normalisation Electrotechnique
Europäisches Komitee für Elektrotechnische Normung

CEN-CENELEC Management Centre: Avenue Marnix 17, B - 1000 Brussels

Contents

Page

Foreword	3
Clause:	4
Question:	4
Interpretation:	4
Validity:	4

iTeh STANDARD PREVIEW (standards.iteh.ai)

[SIST EN 50131-2-4:2008/IS1:2014](https://standards.iteh.ai/catalog/standards/sist/6cd08fdb-8135-49ef-a80f-37b87eba335f/sist-en-50131-2-4-2008-is1-2014)

<https://standards.iteh.ai/catalog/standards/sist/6cd08fdb-8135-49ef-a80f-37b87eba335f/sist-en-50131-2-4-2008-is1-2014>

Foreword

This Interpretation Sheet to the European Standard EN 50131-2-4:2008 was prepared by CLC/TC 79 "Alarm systems".

iTeh STANDARD PREVIEW (standards.iteh.ai)

[SIST EN 50131-2-4:2008/IS1:2014](https://standards.iteh.ai/catalog/standards/sist/6cd08fdb-8135-49ef-a80f-37b87eba335f/sist-en-50131-2-4-2008-is1-2014)

<https://standards.iteh.ai/catalog/standards/sist/6cd08fdb-8135-49ef-a80f-37b87eba335f/sist-en-50131-2-4-2008-is1-2014>

EN 50131-2-4:2008/IS1:2014 (E)**Text of IS1 to EN 50131-2-4:2008****Clause:**

Annex A and Figure A.1

Question:

Would it be allowed for test purposes (for test houses and manufacturers) to use the NeoDym magnet listed below instead of the AlNiCo version described in Annex A and Figure A.1 for reproducible tests ?

Interpretation:

Yes, because this will allow stable and reproducible test results, which is not guaranteed while using the AlNiCo magnet due to the nature of the magnet material. Furthermore, the test magnet described below allows a high-level degree of backward compatibility for already tested products, while it gives the stability required.

Therefore, when the NeoDym magnet is used for test purposes (for test houses and manufacturers), the text below may be used in place of Annex A.

Validity:

This interpretation remains valid until an amendment or updated standard dealing with this issue is published by CENELEC.

ITeH STANDARD PREVIEW
(standards.iteh.ai)

[SIST EN 50131-2-4:2008/IS1:2014](https://standards.iteh.ai/catalog/standards/sist/6cd08fdb-8135-49ef-a80f-37b87eba335f/sist-en-50131-2-4-2008-is1-2014)

<https://standards.iteh.ai/catalog/standards/sist/6cd08fdb-8135-49ef-a80f-37b87eba335f/sist-en-50131-2-4-2008-is1-2014>

Annex A (normative)

Dimensions & requirements of the standardised test magnets

A.1 Normative references

The interference test magnets shall comprise a magnet identical to the corresponding magnet supplied with the detector and one of the following specified independent test magnets according to whether the detector is surface or flush mounted.

The following standards will form the base for the selection of the independent test magnet:

EN 60404-5, *Magnetic materials – Part 5: Permanent magnet (magnetically hard) materials – Methods of measurement of magnetic properties (IEC 60404-5)*

EN 60404-14, *Magnetic materials – Part 14: Methods of measurement of the magnetic dipole moment of a ferromagnetic material specimen by the withdrawal or rotation method (IEC 60404-14)*

IEC 60404-8-1, *Magnetic materials – Part 8-1: Specifications for individual materials – Magnetically hard materials*

A.2 Requirements

The field strength of the magnet determined by the magnetic material, by remanence (B_r) in mT and the product of energy $(BH)_{\max}$ in kJ/m^3 , which are material dependent as the values describe the full saturation of that material should be measured before any calibration took place.

The field strength of the test magnet needs to be adjusted at the polarization of the working point in mT as defined.

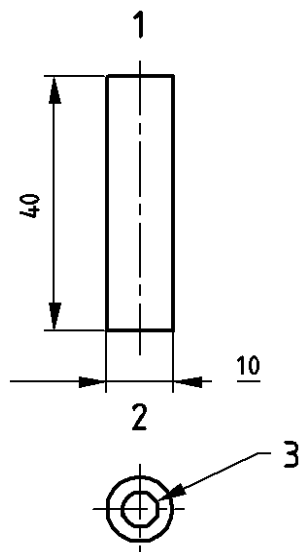
The relevant value, dimensions and measurement point for the test magnet can be found in the following drawings and tables. For calculations, measurements and calibration of the test magnets, the norms cited above shall be used.

The independent test magnet for Test Magnet Type 1 is described in Figure A.1.

To get the magnets in question adjusted to the proper values and calibrated (e.g. polarization in working point), it is strongly suggested to perform adjustments of the magnetic values for ordered magnets performed by an accredited test house for magnetic fields. One potential source could be the following:

MAGNET-PHYSIK
Dr. Steingroever GmbH
Emil-Hoffmann-Strasse 3
50966 Cologne, Germany
www.magnet-physik.de

EN 50131-2-4:2008/IS1:2014 (E)

**Key**

- 1 North pole
- 2 South pole
- 3 North pole

Material	NdFeB N40 (REFeB 310/130 - Code number R5-1-11)
Remanence B_r min	1 275 mT \pm 2 %
Product of energy $(BH)_{max}$	310 kJ/m ³ \pm 3 %
Polarization of working point	0,835 T \pm 2 %

<https://standards.itech.ai/catalog/standards/sist/6cd08f1b-8135-49ef-a80f-37b87c3a335f/sist-en-50131-2-4-2008-is1-2014>

Figure A.1 – Test magnet – Magnet Type 1