

# INTERNATIONAL STANDARD

**ISO**  
**2336-1**

First edition  
1996-04-01

---

---

## Hacksaw blades —

### Part 1:

Dimensions for hand blades

iTeh STANDARD PREVIEW

(standards.iteh.ai)

*Lames de scies droites à métaux —*

*Partie 1. Dimensions des lames à main*

<https://standards.iteh.ai/catalog/standards/sist/265830c8-8334-4f06-ba72-340878c287b8/iso-2336-1-1996>



Reference number  
ISO 2336-1:1996(E)

## Foreword

ISO (the International Organization for Standardization) is a worldwide federation of national standards bodies (ISO member bodies). The work of preparing International Standards is normally carried out through ISO technical committees. Each member body interested in a subject for which a technical committee has been established has the right to be represented on that committee. International organizations, governmental and non-governmental, in liaison with ISO, also take part in the work. ISO collaborates closely with the International Electrotechnical Commission (IEC) on all matters of electrotechnical standardization.

Draft International Standards adopted by the technical committees are circulated to the member bodies for voting. Publication as an International Standard requires approval by at least 75 % of the member bodies casting a vote.

International Standard ISO 2336-1 was prepared by Technical Committee ISO/TC 29, *Small tools*.

This first edition of ISO 2336-1 as well as ISO 2336-2:1996 cancels and replaces ISO 2336:1980, which has been technically revised.

ISO 2336 consists of the following parts, under the general title *Hacksaw blades*:

- Part 1: *Dimensions for hand blades*
- Part 2: *Dimensions for machine blades*

# Hacksaw blades —

## Part 1: Dimensions for hand blades

### 1 Scope

This part of ISO 2336 specifies the dimensions of hand hacksaw blades.

It is valid for single edged blades of length equal to 300 mm, the tooth pitch of which is no greater than 1,4 mm.

b) reference to this part of ISO 2336 (i.e. ISO 2336-1);

c) the blade length,  $l$ , in millimetres;

d) the width,  $a$ , in millimetres;

e) the thickness,  $b$ , in millimetres;

### 2 Dimensions

Dimensions shown in figure 1 are given in table 1 with tooth pitch,  $P$ , and the number of teeth,  $N$ , in 25 mm. Blade length,  $l$ , is the distance between centres of pin holes of diameter  $d$ . It is recommended that the centre of the pin hole be located on the centreline of the blade.

f) the tooth pitch,  $P$ , in millimetres, which can be supplemented by the number of teeth,  $N$ , in 25 mm, given between parentheses.

#### EXAMPLE

A hand hacksaw blade, of length  $l = 300$  mm, of width  $a = 12,5$  mm, of thickness  $b = 0,63$  mm and of tooth pitch  $P = 1$  mm is designated as follows:

**Saw blade ISO 2336-1 - 300 × 12,5 × 0,63 × 1**

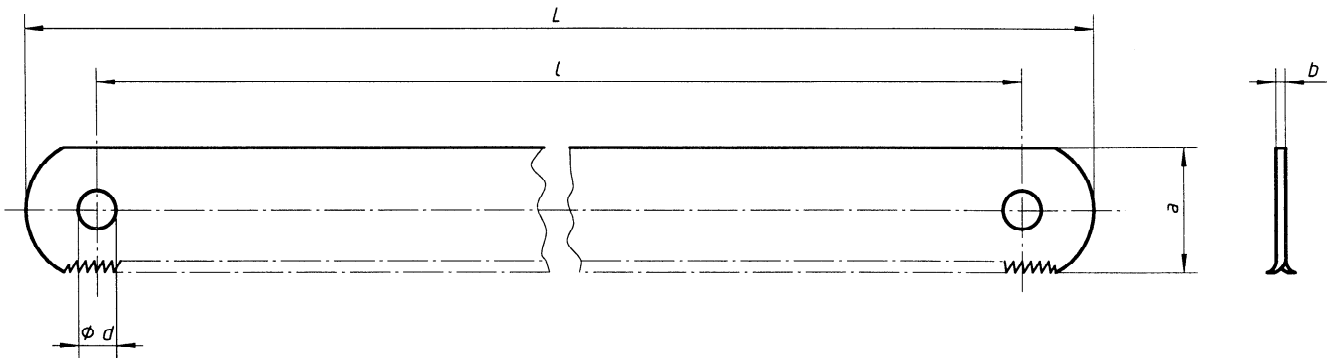
or

**Saw blade ISO 2336-1 - 300 × 12,5 × 0,63 × 1  
(24)**

### 3 Designation

Hand hacksaw blades, according to this part of ISO 2336, shall be designated as follows:

a) "Saw blade";



NOTE — The shape of the blade ends is left to the manufacturer's discretion.

Figure 1

Table 1

Dimensions in millimetres

$l$ $\pm 2$	$a$	$b$	Tooth spacing <sup>1)</sup>		$L$ max.	$d$ H14
			$P$	$N$		
300	12,5	0,63	0,8	32	315	4
			1,4	18		

1) See clause 2.

**iTeh STANDARD PREVIEW**  
This page intentionally left blank  
**(standards.iteh.ai)**

ISO 2336-1:1996

<https://standards.iteh.ai/catalog/standards/sist/265830c8-8334-4f06-ba72-340878c287b8/iso-2336-1-1996>

**iTeh STANDARD PREVIEW**  
This page intentionally left blank  
**(standards.iteh.ai)**

ISO 2336-1:1996

<https://standards.iteh.ai/catalog/standards/sist/265830c8-8334-4f06-ba72-340878c287b8/iso-2336-1-1996>

**iTeh STANDARD PREVIEW**  
This page intentionally left blank  
**(standards.iteh.ai)**

ISO 2336-1:1996

<https://standards.iteh.ai/catalog/standards/sist/265830c8-8334-4f06-ba72-340878c287b8/iso-2336-1-1996>

**iTeh STANDARD PREVIEW**  
**(standards.iteh.ai)**

ISO 2336-1:1996

<https://standards.iteh.ai/catalog/standards/sist/265830c8-8334-4f06-ba72-340878c287b8/iso-2336-1-1996>

---

---

**ICS 25.100.40**

**Descriptors:** metalworking tools, hand tools, saws, hacksaws, blades, dimensions, number of teeth, designation.

Price based on 2 pages

---

---