

INTERNATIONAL  
STANDARD

**ISO**  
**2725-1**

First edition  
1996-12-01

---

---

**Assembly tools for screws and nuts —  
Square drive sockets —**

**Part 1:**  
**Hand-operated sockets — Dimensions**

ISO 2725-1:1996

<https://standards.iteh.ai/catalog/standards/sist/08af794a-7e42-486f-9f6a-e3ca83353330/iso-2725-1-1996>  
Outils de manœuvre pour vis et écrous — Douilles à carré conducteur  
femelle —

Partie 1: Douilles à main — Dimensions



Reference number  
ISO 2725-1:1996(E)

## Foreword

ISO (the International Organization for Standardization) is a worldwide federation of national standards bodies (ISO member bodies). The work of preparing International Standards is normally carried out through ISO technical committees. Each member body interested in a subject for which a technical committee has been established has the right to be represented on that committee. International organizations, governmental and non-governmental, in liaison with ISO, also take part in the work. ISO collaborates closely with the International Electrotechnical Commission (IEC) on all matters of electrotechnical standardization.

Draft International Standards adopted by the technical committees are circulated to the member bodies for voting. Publication as an International Standard requires approval by at least 75 % of the member bodies casting a vote.

iTeh STANDARD PREVIEW

International Standard ISO 2725-1 was prepared by Technical Committee ISO/TC 29, *Small tools*, Subcommittee SC 10, *Assembly tools for screws and nuts, pliers and nippers*.

ISO 2725-1:1996

This first edition of ISO 2725-1 as well as ISO 2725-2 cancels and replaces ISO 2725:1987, which has been technically revised.

ISO 2725 consists of the following parts, under the general title *Assembly tools for screws and nuts — Square drive sockets*:

- Part 1: *Hand-operated sockets — Dimensions*
- Part 2: *Machine-operated sockets ("impact") — Dimensions*

Annex A of this part of ISO 2725 is for information only.

© ISO 1996

All rights reserved. Unless otherwise specified, no part of this publication may be reproduced or utilized in any form or by any means, electronic or mechanical, including photocopying and microfilm, without permission in writing from the publisher.

International Organization for Standardization

Case Postale 56 • CH-1211 Genève 20 • Switzerland

Printed in Switzerland

# Assembly tools for screws and nuts — Square drive sockets —

## Part 1:

### Hand-operated sockets — Dimensions

#### 1 Scope

## iTeh STANDARD PREVIEW

This part of ISO 2725 specifies dimensions, technical specifications, designation and marking of hand-operated square drive sockets with operating end having a hexagonal or double hexagonal form in accordance with ISO 1174-1.

Machine-operated sockets ("impact") are dealt with in ISO 2725-2.

#### NOTES

- 1 Hand-operated square drive sockets are listed under number 24 in ISO 1703.
- 2 The figures in this part of ISO 2725 are given only as examples. They are not intended to influence the manufacturer's design.

#### 2 Normative references

The following standards contain provisions which, through reference in this text, constitute provisions of this part of ISO 2725. At the time of publication, the editions indicated were valid. All standards are subject to revision, and parties to agreements based on this part of ISO 2725 are encouraged to investigate the possibility of applying the most recent editions of the standards indicated below. Members of IEC and ISO maintain registers of currently valid International Standards.

ISO 691:1983, *Wrench and socket openings — Metric series — Tolerances for general use.*

ISO 1174-1:1996, *Assembly tools for screws and nuts — Driving squares — Part 1: Driving squares for hand socket tools.*

ISO 1711-1:1996, *Assembly tools for screws and nuts — Technical specifications — Part 1: Hand-operated wrenches and sockets.*

### 3 Tolerances across flats

Tolerances across flats,  $s$ , shall be in conformity with the tolerances for socket openings given in ISO 691. Manufacturers are free to choose the series of deviations.

### 4 Dimensions

Tables 1 to 5 give the dimensions, in millimetres, of sockets shown in figures 1 to 3 for driving squares of 6,3 mm to 25 mm (in accordance with ISO 1174-1).

### 5 Technical specifications

The technical specifications shall be in accordance with ISO 1711-1.

### 6 Designation

A hand-operated square drive socket in accordance with this part of ISO 2725 shall be designated by

- "Hex socket" or "Bi-hex socket" depending on its form;
- reference to this part of ISO 2725, i.e. ISO 2725-1;
- square drive dimensions, in millimetres;
- size across flats, in millimetres;
- type.

#### EXAMPLE

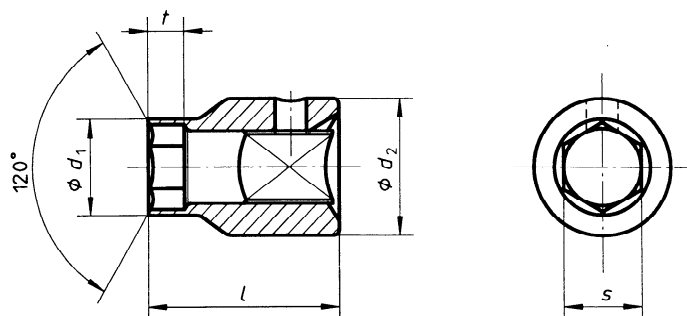
Double hexagon hand-operated square drive socket with 12,5 mm square size and width across flats  $s = 10$  mm, normal Type A, is designated as follows:

**Bi-hex socket ISO 2725-1 - 12,5 × 10 - A**

### 7 Marking

The hand-operated square drive socket shall be marked, permanently and legibly, with at least the following information:

- the name or trademark of the manufacturer (or distributor);
- the size across flats.



**Figure 1 — Sockets with  $d_1 < d_2$**

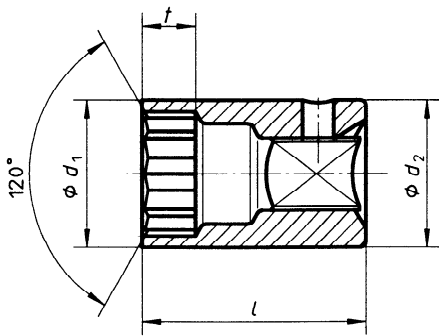


Figure 2 — Sockets with  $d_1 = d_2$

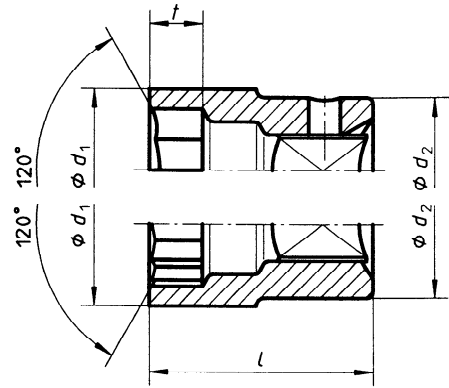


Figure 3 — Sockets with  $d_1 > d_2$

iTeh STANDARD PREVIEW

Table 1 — Square drive of 6,3 mm

(standards.iteh.ai)

Table 2 — Square drive of 10 mm

s	t min.	d <sub>1</sub> max.	d <sub>2</sub> max.	l			
				max. Type A (normal)	min. Type B (long)		
3,2	1,6	5,9	12,5	25	45		
4	2	6,9					
5	2,5	8,2					
5,5	3	8,8					
6	3,5	9,4					
7	4	11					
8	5	12,2					
9		13,5	13,5				
10	6	14,7	14,7	24	35		
11	7	16	16				
12	8	17,2	17,2				
13		18,5	18,5				
14		19,7	19,7				
15	10	19,7	24			35	60
16		21					
17		22,2					
18		23,5					
19	12	24,7	24,7			38	60
20		26	26				
21		28,5	28,5				
22	14	29,7	29,7	38	60		

s	t min.	d <sub>1</sub> max.	d <sub>2</sub> max.	l	
				max. Type A (normal)	min. Type B (long)
7	4	11	20	32	45
8	5	12,2			
9		13,5			
10	6	14,7			
11	7	16			
12	8	17,2			
13		18,5			
14	10	19,7	24	35	60
15		21			
16		22,2			
17		23,5			
18	12	24,7	24,7	38	60
19		26	26		
20		28,5	28,5		
21	14	29,7	29,7	38	60
22		29,7	29,7		

**Table 3 — Square drive of 12,5 mm**

<i>s</i>	<i>t</i> min.	<i>d</i> <sub>1</sub> max.	<i>d</i> <sub>2</sub> max.	<i>l</i>	
				max. Type A (normal)	min. Type B (long)
10	6	15,5	24	40	75
11	7	16,7			
12	8	18			
13		19,2			
14	10	20,5			
15		21,7			
16		23			
17		24,2			
18	12	25,5	25,5	42	
19		26,7			
21	14	29,2	29,2	44	
22		30,5			
24		33			
27	18	36,7	36,7	48	
30	20	40,5	40,5	50	
32	22	43	43		

**Table 4 — Square drive of 20 mm**

<i>s</i>	<i>t</i> min.	<i>d</i> <sub>1</sub> max.	<i>d</i> <sub>2</sub> max.	<i>l</i>	
				max. Type A (normal)	min. Type B (long)
21	14	32,1	40	55	85
22		33,3			
24		35,8			
27	39,6				
30	20	43,3	43,3	60	
32	22	45,8	45,8		
34	24	48,3	48,3	65	
36		50,8	50,8		
41	27	57,1	57,1	70	
46	30	63,3	63,3	75	
50	33	68,3	68,3	80	
55	36	74,6	74,6	85	

STANDARD PREVIEW  
(standards.tch.a)  
ISO 2725-1:1996  
<https://standards.tch.ai/catalog/standards/sist/08af294a-7e42-446f-9fca-c3ca83353330/iso-2725-1-1996>

**Table 5 — Square drive of 25 mm**

<i>s</i>	<i>t</i> min.	<i>d</i> <sub>1</sub> max.	<i>d</i> <sub>2</sub> max.	<i>l</i> max. Type A (normal)
46	30	66,4	55	80
50	33	71,4		85
55	36	77,6	57	90
60	39	83,9	61	95

**Annex A**  
(informative)

**Bibliography**

- [1] ISO 1703:1983, *Assembly tools for screws and nuts — Nomenclature*.
- [2] ISO 2725-2:1996, *Assembly tools for screws and nuts — Square drive sockets — Part 2: Machine-operated sockets (“impact”) — Dimensions*.

**iTeh STANDARD PREVIEW**  
**(standards.iteh.ai)**

[ISO 2725-1:1996](https://standards.iteh.ai/catalog/standards/sist/08af294a-7e42-4f6f-9fca-c3ca83355330/iso-2725-1-1996)

<https://standards.iteh.ai/catalog/standards/sist/08af294a-7e42-4f6f-9fca-c3ca83355330/iso-2725-1-1996>

**iTeh STANDARD PREVIEW**  
**(standards.iteh.ai)**

ISO 2725-1:1996

<https://standards.iteh.ai/catalog/standards/sist/08af294a-7e42-4f6f-9fca-c3ca83355330/iso-2725-1-1996>

---

---

**ICS 25.140.30**

**Descriptors:** tools, assembly tools, hand tools, socket wrenches, dimensions, designation, marking.

Price based on 5 pages

---

---