
**Natural gas — Determination of
composition with defined uncertainty by
gas chromatography —**

Part 4:

**Determination of nitrogen, carbon dioxide
and C1 to C5 and C6+ hydrocarbons for a
laboratory and on-line measuring system
using two columns**

ISO 6974-4:2000

<https://standards.iteh.ai/catalog/standards/sist/6974-4-2000/iso-6974-4-2000>
*Gaz naturel — Détermination de la composition avec une incertitude
définie par chromatographie en phase gazeuse —*

*Partie 4: Détermination de l'azote, du dioxyde de carbone et des
hydrocarbures (C1 à C5 et C6+) pour un laboratoire et un système de
mesure en continu employant deux colonnes*



PDF disclaimer

This PDF file may contain embedded typefaces. In accordance with Adobe's licensing policy, this file may be printed or viewed but shall not be edited unless the typefaces which are embedded are licensed to and installed on the computer performing the editing. In downloading this file, parties accept therein the responsibility of not infringing Adobe's licensing policy. The ISO Central Secretariat accepts no liability in this area.

Adobe is a trademark of Adobe Systems Incorporated.

Details of the software products used to create this PDF file can be found in the General Info relative to the file; the PDF-creation parameters were optimized for printing. Every care has been taken to ensure that the file is suitable for use by ISO member bodies. In the unlikely event that a problem relating to it is found, please inform the Central Secretariat at the address given below.

iTeh STANDARD PREVIEW
(standards.iteh.ai)

ISO 6974-4:2000

<https://standards.iteh.ai/catalog/standards/sist/b6aab95e-df37-4b20-ad1f-039a0d872b68/iso-6974-4-2000>

© ISO 2000

All rights reserved. Unless otherwise specified, no part of this publication may be reproduced or utilized in any form or by any means, electronic or mechanical, including photocopying and microfilm, without permission in writing from either ISO at the address below or ISO's member body in the country of the requester.

ISO copyright office
Case postale 56 • CH-1211 Geneva 20
Tel. + 41 22 749 01 11
Fax + 41 22 734 10 79
E-mail copyright@iso.ch
Web www.iso.ch

Printed in Switzerland

Contents

Page

Foreword.....	iv
Introduction	v
1 Scope	1
2 Normative references	2
3 Principle.....	2
4 Materials	2
5 Apparatus	2
6 Procedure	4
6.1 Gas chromatographic operating conditions.....	4
6.2 Performance requirements — Peak resolution	7
6.3 Determination — Outline of the analysis	8
7 Expression of results	8
7.1 Calculation.....	8
7.2 Precision and accuracy.....	8
8 Test report	8
Annex A (informative) Procedure for setting valve timings and restriction setting.....	9
Annex B (informative) Final time	10
Annex C (informative) Typical precision values	11
Bibliography	12

Foreword

ISO (the International Organization for Standardization) is a worldwide federation of national standards bodies (ISO member bodies). The work of preparing International Standards is normally carried out through ISO technical committees. Each member body interested in a subject for which a technical committee has been established has the right to be represented on that committee. International organizations, governmental and non-governmental, in liaison with ISO, also take part in the work. ISO collaborates closely with the International Electrotechnical Commission (IEC) on all matters of electrotechnical standardization.

International Standards are drafted in accordance with the rules given in the ISO/IEC Directives, Part 3.

Draft International Standards adopted by the technical committees are circulated to the member bodies for voting. Publication as an International Standard requires approval by at least 75 % of the member bodies casting a vote.

Attention is drawn to the possibility that some of the elements of this part of ISO 6974 may be the subject of patent rights. ISO shall not be held responsible for identifying any or all such patent rights.

International Standard ISO 6974-4 was prepared by Technical Committee ISO/TC 193, *Natural gas*, Subcommittee SC 1, *Analysis of natural gas*.

This part as well as the other five parts of ISO 6974 cancel and replace ISO 6974:1984 which specified only one method.

ISO 6974 consists of the following parts, under the general title *Natural gas — Determination of composition with defined uncertainty by gas chromatography*:

- *Part 1: Guidelines for tailored analysis*
- *Part 2: Measuring-system characteristics and statistics for data treatment*
- *Part 3: Determination of hydrogen, helium, oxygen, nitrogen, carbon dioxide and hydrocarbons up to C₈ using two packed columns*
- *Part 4: Determination of nitrogen, carbon dioxide and C₁ to C₅ and C₆₊ hydrocarbons for a laboratory and on-line measuring system using two columns*
- *Part 5: Determination of nitrogen, carbon dioxide and C₁ to C₅ and C₆₊ hydrocarbons for a laboratory and on-line process application using three columns*
- *Part 6: Determination of hydrogen, helium, oxygen, nitrogen, carbon dioxide and hydrocarbons up to C₈ using three capillary columns*

Annexes A to C of this part of ISO 6974 are for information only.

Introduction

This part of ISO 6974 specifies a precise and accurate method for the determination of the composition of natural gas. The compositional data obtained are used for the calculation of the calorific value, the relative density and the Wobbe index. This method requires the use of two columns placed in series in a single-oven gas chromatograph.

The combination of two columns makes backflushing possible. All the constituents including the backflush peak are detected by a thermal conductivity detector (TCD).

This method is derived from ISO 6568, *Natural gas — Simple analysis by gas chromatography*.

This part of ISO 6974 provides one of the methods that may be used for determining the composition of natural gas in accordance with parts 1 and 2 of ISO 6974.

iTeh STANDARD PREVIEW (standards.iteh.ai)

ISO 6974-4:2000

<https://standards.iteh.ai/catalog/standards/sist/b6aab95e-df37-4b20-ad1f-039a0d872b68/iso-6974-4-2000>

iTeh STANDARD PREVIEW **(standards.iteh.ai)**

ISO 6974-4:2000

<https://standards.iteh.ai/catalog/standards/sist/b6aab95e-df37-4b20-ad1f-039a0d872b68/iso-6974-4-2000>

Natural gas — Determination of composition with defined uncertainty by gas chromatography —

Part 4:

Determination of nitrogen, carbon dioxide and C1 to C5 and C6+ hydrocarbons for a laboratory and on-line measuring system using two columns

1 Scope

This part of ISO 6974 describes a gas chromatographic method for the quantitative determination of natural gas constituents using a two-column system. This method is applicable to determinations made in on-line processes or in the laboratory. It is applicable to the analysis of gases containing constituents within the mole fraction ranges given in Table 1. These ranges do not represent the limits of detection, but the limits within which the stated precision of the method applies. Although one or more components in a sample may not be detected present, the method can still be applicable.

This part of ISO 6974 is only applicable if used in conjunction with parts 1 and 2 of ISO 6974.

ISO 6974-4:2000
<https://standards.iteh.ai/standards/iso-6974-4-2000/039a0d872b68/iso-6974-4-2000>
 Table 1 — Application ranges

Component	Mole fraction range %
Nitrogen	0,001 to 15,0
Carbon dioxide	0,001 to 10
Methane	75 to 100
Ethane	0,001 to 10,0
Propane	0,001 to 3,0
<i>iso</i> -Butane (2-methylpropane)	0,001 to 1,0
<i>n</i> -Butane	0,001 to 1,0
<i>neo</i> -Pentane (2,2-dimethylpropane)	0,001 to 0,5
<i>iso</i> -Pentane (2-methylbutane)	0,001 to 0,5
<i>n</i> -Pentane	0,001 to 0,5
Hexanes + sum of all C ₆ and higher hydrocarbons	0,001 to 0,2

NOTE 1 Oxygen is not a normal constituent of natural gas and would not be expected to be present in gas sampled for an on-line instrument. If any oxygen is present as a result of air contamination, it will be measured with the nitrogen. The resulting (nitrogen + oxygen) value will be in error to a small extent because of the slight difference between detector responses for oxygen and nitrogen. Nonetheless, the result for the natural gas/air mixture will be reasonably accurate since neither component contributes to the calorific value.

NOTE 2 The content of helium and argon are assumed to be negligible and unvarying such that helium and argon need not be determined.

2 Normative references

The following normative documents contain provisions which, through reference in this text, constitute provisions of this part of ISO 6974. For dated references, subsequent amendments to, or revisions of, any of these publications do not apply. However, parties to agreements based on this part of ISO 6974 are encouraged to investigate the possibility of applying the most recent editions of the normative documents indicated below. For undated references, the latest edition of the normative document referred to applies. Members of ISO and IEC maintain registers of currently valid International Standards.

ISO 6142, *Gas analysis — Preparation of calibration gas mixtures — Gravimetric method.*

ISO 6143, *Gas analysis — Determination of the composition of calibration gas mixtures — Comparison methods.*

ISO 6974-1:2000, *Natural gas — Determination of composition with defined uncertainty by gas chromatography — Part 1: Guidelines for tailored analysis.*

ISO 6974-2:—¹⁾, *Natural gas — Determination of composition with defined uncertainty by gas chromatography — Part 2: Measuring-system characteristics and statistics for data treatment.*

ISO 7504:1984, *Gas analysis — Vocabulary.*

iTeh STANDARD PREVIEW
(standards.iteh.ai)

3 Principle

Determination of nitrogen, carbon dioxide, methane, ethane, propane, butanes and pentanes by gas chromatography using two columns (a short one and a long one) of DC-200 on Chromosorb PAW in a backflush arrangement. The short column retains hydrocarbons heavier than normal pentane which are eluted after backflushing as a C₆₊ composite peak. The long column is used for the determination of nitrogen, carbon dioxide, methane up to normal pentane. Detection is carried out by a thermal conductivity detector (TCD). Oxygen, argon, hydrogen and helium are not measured by this method.

4 Materials

4.1 Helium carrier gas, > 99,99 % pure.

4.2 Working-reference gas mixtures (WRM), the composition of which shall be chosen to be similar to that of the anticipated sample.

Prepare a cylinder of a working-reference gas mixture, by a gravimetric method, in accordance with ISO 6142, and/or certified and validated in accordance with ISO 6143. The working-reference gas mixture shall contain at least nitrogen, carbon dioxide, methane, ethane, propane, *n*-butane, *iso*-butane and possibly *neo*-pentane, *iso*-pentane and *n*-pentane.

5 Apparatus

5.1 Laboratory gas chromatographic (GC) system, consisting of the following components.

5.1.1 Gas chromatograph (GC), capable of isothermal operation and equipped as follows:

1) To be published.

- a) **column oven**, capable of maintaining the temperature of the column temperature to within $\pm 0,1$ °C over the temperature range from 70 °C to 150 °C;
- b) **valve oven**: capable of being maintained over the temperature range from 70 °C to 150 °C or alternatively having the capacity to fit the valves in the column oven;
- c) **flow regulators**: capable of regulating the carrier gas flow rates.

5.1.2 Injection device, consisting of a ten-port sample-injection valve V1 and also used for backflushing C₆₊ components (two six-port valves may be used for these duties).

5.1.3 Metal columns packed with 28 % DC-200 on Chromosorb PAW, satisfying the performance requirements given in clause 6.2 and consisting of the following packing materials and column dimensions, given as examples, for use with conventional and readily available injection valves and TCD.

Columns shall satisfy the following requirements:

- a) metal tubing:
 - column 1: 0,45 m long, 4,75 mm internal diameter (i.d.) (1/4 in o.d.),
 - column 2: 9 m long, 4,75 mm i.d. (1/4 in o.d.)
- b) packing:
 - stationary phase: 28 % DC-200 (viscosity: $350 \cdot 10^{-6}$ m²/s),
 - support: Chromosorb PAW (45 ASTM mesh to 60 ASTM mesh),
- c) method of packing: any suitable packing method providing uniform column packing and performance characteristics in accordance with 6.2. If purchased individually, as part of a system, or packed individually, their performance shall comply with the specification. When packed individually it is assumed that this will be according to a recognized technique.

NOTE The following packing method is suitable:

Close the column outlet with a sintered disc or glass wool plug. Connect a reservoir containing rather more packing than is needed to fill the column to the inlet and apply a pressure of 0,4 MPa of nitrogen to this reservoir. The flow of packing into the column is assisted by vibration. When the column is full, allow the pressure to decay slowly before disconnecting the reservoir.

- d) **conditioning**: with freshly prepared columns, more stable baselines can be obtained by conditioning them overnight, with carrier gas flowing, at a temperature of 50 °C higher than that at which they are intended to operate. If this is necessary, but not easily achieved in the gas chromatograph in which the columns are to be used, they can be conditioned after being installed in another unit.

5.1.4 Thermal conductivity detector (TCD), with a time constant no greater than 0,1 s, and internal volume appropriate for the column sizes and flow rate used.

5.1.5 Controller/peak-measurement system, having a wide range of sensitivity (0 V to 1 V), capable of measuring peaks on a sloping baseline and able to control automatic operation of the valves according to a sequence selected by the operator.

5.1.6 Auxiliary equipment, consisting of valves, tubing and any other accessories, to control the flow of sample gas to the chromatograph and for shutting off this flow for a defined period of time before injection.

6 Procedure

6.1 Gas chromatographic operating conditions

Set the operating conditions for the apparatus (5.1) as follows.

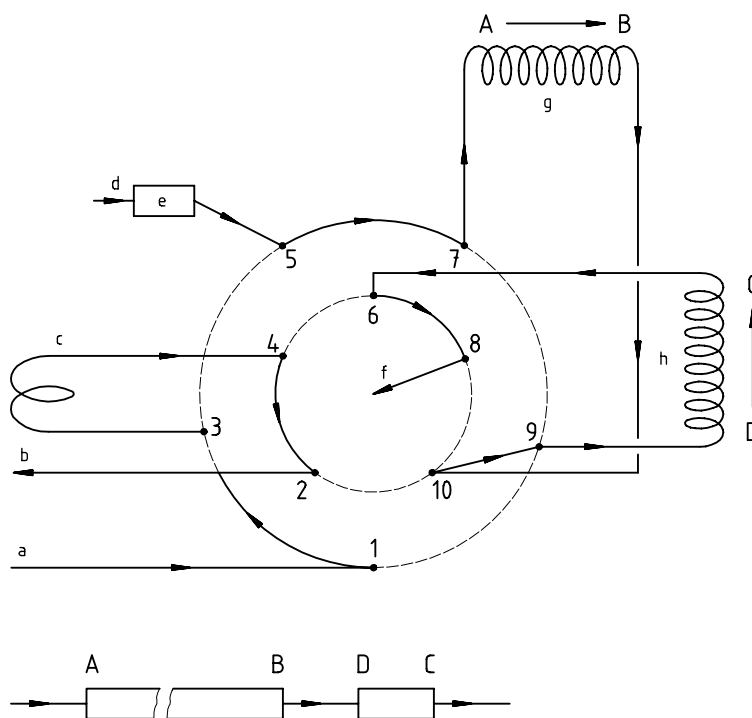
- a) Oven column: 70 °C to 150 °C, capable of being maintained to within $\pm 0,1$ °C.
- b) Carrier gas flow rate: with the carrier gas flowing through columns in the order of column 1 toward column 2 [Figure 1 b), configuration 2], set the flow rate so as to obtain an average linear velocity for nitrogen (total column length divided by hold-up time) between 5 cm/s to 10 cm/s (corresponding to a flowrate between 30 ml/min and 60 ml/min).
- c) Valves: if the valves are not fitted in the column oven, set them to a temperature in the range of 70 °C to 150 °C (no less than the column temperature), isothermal and stable to ± 2 °C.
- d) Detector: TCD
 - temperature setting: between 120 °C and 200 °C;
 - set the bridge current according to manufacturer's instructions.
- e) Controller/peak-measurement system: set up in accordance with the manufacturer's instructions.

EXAMPLE An example of the configuration is shown in Figure 1. The measuring system comprises a ten-port sample injection/backflush valve. In configuration 1 [Figure 1 a)], the sample loop is flushed by the sample gas. When the valve is switched in configuration 2 [Figure 1 a)], injection is performed. The valve is returned to configuration 1 after all the *n*-pentane leaves column 1 but before the lowest C₆ isomer leaves column 1 on its way to column 2.

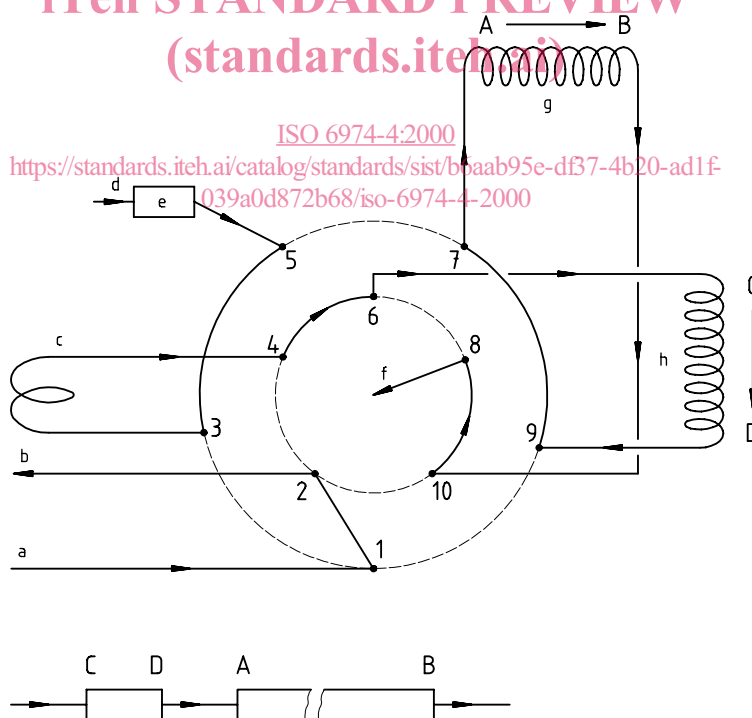
A typical chromatogram is shown in Figure 2.

The gas chromatographic conditions are summarized in Table 2.

The procedure for setting valve timings and restriction setting is described in annexes A and B.



a) Configuration 1



b) Configuration 2

- a Gas sample
- b Vent
- c Sample loop (1 ml)
- d Carrier gas

- e TCD (reference channel)
- f TCD (analysis channel)
- g Column 2 (length: 9 m)
- h Column 1 (length: 0,45 m)

Figure 1 — Example of chromatograph set-up