

**Open Service Access (OSA);
Parlay X Web Services;
Part 2: Third Party Call
(Parlay X 2)**



iTeh STANDARD PREVIEW
(standards.iteh.ai)

Full standard:
<https://standards.iteh.ai/catalog/standards/sist/a70dd496-380b-4aea-b4a5-d63854f3fb63/etsi-es-202-391-2-v1.3.1-2008-05>



Reference

RES/TISPAN-01056-02-OSA

Keywords

API, OSA, service

ETSI

650 Route des Lucioles
F-06921 Sophia Antipolis Cedex - FRANCE

Tel.: +33 4 92 94 42 00 Fax: +33 4 93 65 47 16

Siret N° 348 623 562 00017 - NAF 742 C
Association à but non lucratif enregistrée à la
Sous-Préfecture de Grasse (06) N° 7803/88

Important notice

Individual copies of the present document can be downloaded from:

<http://www.etsi.org>

The present document may be made available in more than one electronic version or in print. In any case of existing or perceived difference in contents between such versions, the reference version is the Portable Document Format (PDF). In case of dispute, the reference shall be the printing on ETSI printers of the PDF version kept on a specific network drive within ETSI Secretariat.

Users of the present document should be aware that the document may be subject to revision or change of status. Information on the current status of this and other ETSI documents is available at

<http://portal.etsi.org/tb/status/status.asp>

If you find errors in the present document, please send your comment to one of the following services:

http://portal.etsi.org/chaicor/ETSI_support.asp

Copyright Notification

No part may be reproduced except as authorized by written permission.
The copyright and the foregoing restriction extend to reproduction in all media.

© European Telecommunications Standards Institute 2008.

© The Parlay Group 2008.

All rights reserved.

DECT™, PLUGTESTS™, UMTS™, TIPHON™, the TIPHON logo and the ETSI logo are Trade Marks of ETSI registered for the benefit of its Members.

3GPP™ is a Trade Mark of ETSI registered for the benefit of its Members and of the 3GPP Organizational Partners.

Contents

Intellectual Property Rights	4
Foreword.....	4
1 Scope	5
2 References	5
2.1 Normative references	5
3 Definitions and abbreviations.....	6
3.1 Definitions	6
3.2 Abbreviations	6
4 Detailed service description	6
5 Namespaces.....	7
6 Sequence diagrams	7
6.1 "Click to Dial" call setup.....	7
7 XML Schema data type definition	8
7.1 CallStatus enumeration.....	8
7.2 CallTerminationCause enumeration.....	9
7.3 CallInformation Structure.....	9
8 Web Service interface definition	9
8.1 Interface: ThirdPartyCall.....	9
8.1.1 Operation: makeCall	9
8.1.1.1 Input message: makeCallRequest.....	9
8.1.1.2 Output message : makeCallResponse.....	10
8.1.1.3 Referenced faults.....	10
8.1.2 Operation: getCallInformation.....	10
8.1.2.1 Input message: getCallInformationRequest	10
8.1.2.2 Output message : getCallInformationResponse	10
8.1.2.3 Referenced faults.....	10
8.1.3 Operation: endCall	10
8.1.3.1 Input message: endCallRequest	10
8.1.3.2 Output message: endCallResponse	11
8.1.3.3 Referenced faults.....	11
8.1.4 Operation: cancelCall	11
8.1.4.1 Input message: cancelCallRequest	11
8.1.4.2 Output message: cancelCallResponse	11
8.1.4.3 Referenced faults.....	11
9 Fault definitions.....	12
9.1 ServiceException.....	12
9.1.1 SVC0260: Call already connected	12
9.1.2 SVC0261: Call already terminated	12
10 Service policies	12
Annex A (normative): WSDL for Third Party Call.....	13
Annex B (informative): Bibliography.....	14
History	15

Intellectual Property Rights

IPRs essential or potentially essential to the present document may have been declared to ETSI. The information pertaining to these essential IPRs, if any, is publicly available for **ETSI members and non-members**, and can be found in ETSI SR 000 314: "*Intellectual Property Rights (IPRs); Essential, or potentially Essential, IPRs notified to ETSI in respect of ETSI standards*", which is available from the ETSI Secretariat. Latest updates are available on the ETSI Web server (<http://webapp.etsi.org/IPR/home.asp>).

Pursuant to the ETSI IPR Policy, no investigation, including IPR searches, has been carried out by ETSI. No guarantee can be given as to the existence of other IPRs not referenced in ETSI SR 000 314 (or the updates on the ETSI Web server) which are, or may be, or may become, essential to the present document.

Foreword

This ETSI Standard (ES) has been produced by ETSI Technical Committee Telecommunications and Internet converged Services and Protocols for Advanced Networking (TISPAN), and is now submitted for the ETSI standards Membership Approval Procedure.

The present document is part 2 of a multi-part deliverable covering Open Service Access (OSA); Parlay X Web Services, as identified below:

- Part 1: "Common";
- Part 2: "Third Party Call";**
- Part 3: "Call Notification";
- Part 4: "Short Messaging";
- Part 5: "Multimedia Messaging";
- Part 6: "Payment";
- Part 7: "Account Management";
- Part 8: "Terminal Status";
- Part 9: "Terminal Location";
- Part 10: "Call Handling";
- Part 11: "Audio Call";
- Part 12: "Multimedia Conference";
- Part 13: "Address List Management";
- Part 14: "Presence".

The present document has been defined jointly between ETSI, The Parlay Group (<http://www.parlay.org>) and the 3GPP.

The present document forms part of the Parlay X 2.2 set of specifications.

The present document is equivalent to 3GPP TS 29.199-02 V6.5.0 (Release 6).

1 Scope

The present document is part 2 of the Stage 3 Parlay X 2 Web Services specification for Open Service Access (OSA).

The OSA specifications define an architecture that enables application developers to make use of network functionality through an open standardized interface, i.e. the OSA APIs.

The present document specifies the Third Party Call Web Service. The following are defined here:

- Name spaces.
- Sequence diagrams.
- Data definitions.
- Interface specification plus detailed method descriptions.
- Fault definitions.
- Service Policies.
- WSDL Description of the interfaces.

2 References

References are either specific (identified by date of publication and/or edition number or version number) or non-specific.

- For a specific reference, subsequent revisions do not apply.
- Non-specific reference may be made only to a complete document or a part thereof and only in the following cases:
 - if it is accepted that it will be possible to use all future changes of the referenced document for the purposes of the referring document;
 - for informative references.

Referenced documents which are not found to be publicly available in the expected location might be found at <http://docbox.etsi.org/Reference>.

For online referenced documents, information sufficient to identify and locate the source shall be provided. Preferably, the primary source of the referenced document should be cited, in order to ensure traceability. Furthermore, the reference should, as far as possible, remain valid for the expected life of the document. The reference shall include the method of access to the referenced document and the full network address, with the same punctuation and use of upper case and lower case letters.

NOTE: While any hyperlinks included in this clause were valid at the time of publication ETSI cannot guarantee their long term validity.

2.1 Normative references

The following referenced documents are indispensable for the application of the present document. For dated references, only the edition cited applies. For non-specific references, the latest edition of the referenced document (including any amendments) applies.

[1] W3C Recommendation (2 May 2001): "XML Schema Part 2: Datatypes".

NOTE: Available at: <http://www.w3.org/TR/2001/REC-xmlschema-2-20010502/>.

- [2] ETSI ES 202 391-1: "Open Service Access (OSA); Parlay X Web Services; Part 1: Common (Parlay X 2)".

3 Definitions and abbreviations

3.1 Definitions

For the purposes of the present document, the terms and definitions given in ES 202 391-1 [2] apply.

3.2 Abbreviations

For the purposes of the present document, the abbreviations given in ES 202 391-1 [2] apply.

4 Detailed service description

Currently, in order to perform a third party call in telecommunication networks we have to write applications using specific protocols to access Call Control functions provided by network elements (specifically operations to initiate a call from applications). This approach requires a high degree of network expertise. We can also use the OSA gateway approach, invoking standard interfaces to gain access to call control capabilities, but these interfaces are usually perceived to be quite complex by application IT developers. Developers must have advanced telecommunication skills to use Call Control OSA interfaces.

In this clause we describe a Parlay X 2 Web Service, Third Party Call, for creating and managing a call initiated by an application (third party call). The overall scope of this Web Service is to provide functions to application developers to create a call in a simple way. Using the Third Party Call Web Service, application developers can invoke call handling functions without detailed telecommunication knowledge.

Figure 1 shows a scenario using the Third Party Call Web Service to handle third party call functions. The application invokes a Web Service to retrieve stock quotes and a Parlay X 2 Interface to initiate a third party call between a broker and his client.

In the scenario, whenever a particular stock quote reaches a threshold value (1) and (2), the client application invokes a third party call between one or more brokers and their corresponding customers to decide actions to be taken. After invocation (3) by the application, the Third Party Call Web Service invokes a Parlay API method (4) using the Parlay/OSA SCS-CC (Call control) interface. This SCS handles the invocation and sends a message (5) to an MSC to set-up a call between user A and user B.

In an alternative scenario, the Parlay API interaction involving steps (4) and (5) could be replaced with a direct interaction between the Third Party Call Web Service and the Mobile network.

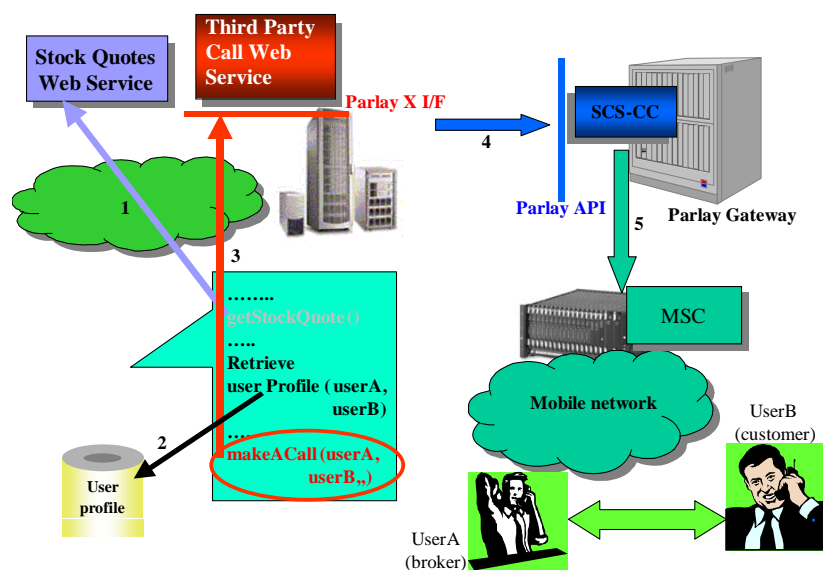


Figure 1: Third party call scenario

5 Namespaces

The ThirdPartyCall interface uses the namespace:

http://www.csapi.org/wsd/parlayx/third_party_call/v2_4

The data types are defined in the namespace:

http://www.csapi.org/schema/parlayx/third_party_call/v2_3

The "xsd" namespace is used in the present document to refer to the XML Schema data types defined in XML Schema [1]. The use of the name "xsd" is not semantically significant.

6 Sequence diagrams

6.1 "Click to Dial" call setup

A common convergence application is Click to Dial, where a self service portal provides a web page that can initiate a call between two phones. This sequence shows a basic call setup, and ending the call through the portal.

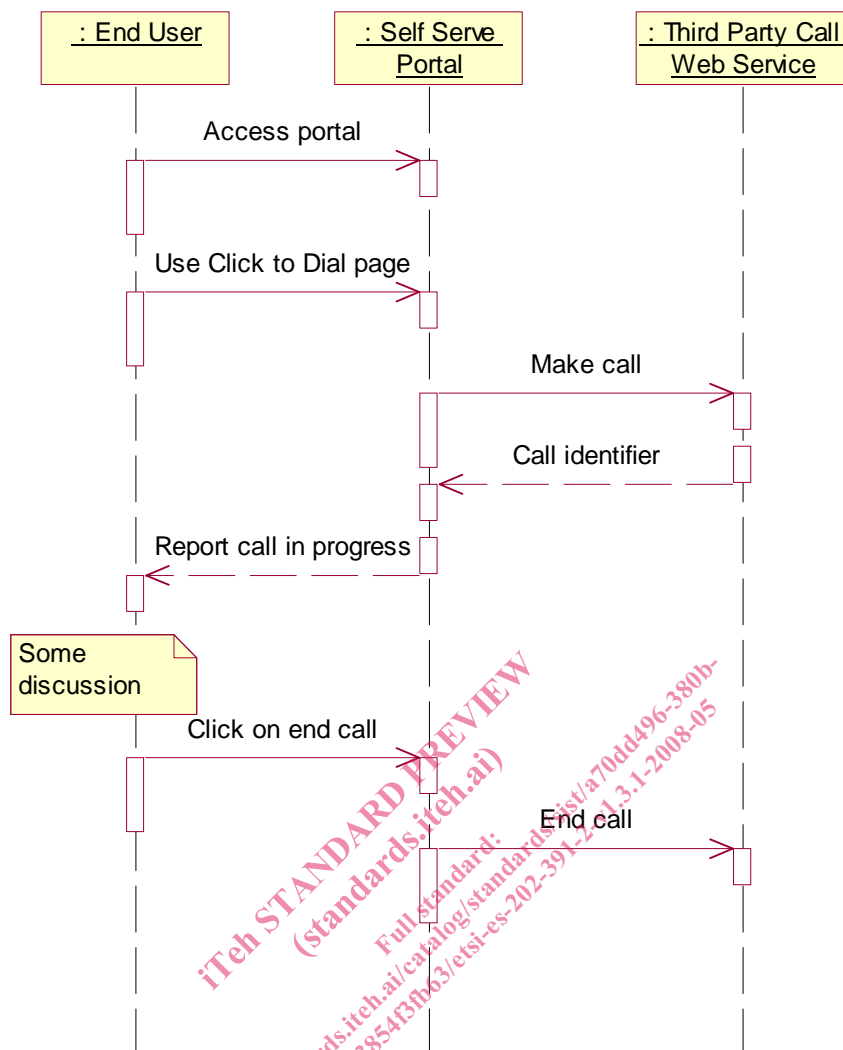


Figure 2

7 XML Schema data type definition

7.1 CallStatus enumeration

List of call status values.

Enumeration value	Description
CallInitial	The call is being established
CallConnected	The call is active
CallTerminated	The call was terminated

7.2 CallTerminationCause enumeration

List of call termination cause values.

Enumeration value	Description
CallingPartyNoAnswer	Calling Party did not answer
CalledPartyNoAnswer	Called Party did not answer
CallingPartyBusy	Calling Party was busy
CalledPartyBusy	Called Party was busy
CallingPartyNotReachable	Calling Party was not reachable
CalledPartyNotReachable	Called Party was not reachable
CallHangUp	The call was terminated by either party hanging up
CallAborted	The call was aborted (any other termination cause)

7.3 CallInformation Structure

Call information for this call.

Element name	Element type	Optional	Description
callStatus	CallStatus	No	It indicates the current status of the call (see possible values below)
startTime	xsd:dateTime	Yes	When applicable (callStatus <> CallInitial), it indicates the time of the beginning of the call
duration	xsd:int	Yes	When applicable (callStatus = CallTerminated), it indicates the duration of the call expressed in seconds
terminationCause	CallTerminationCause	Yes	When applicable (callStatus = CallTerminated), it indicates the cause of the termination of the call

8 Web Service interface definition

8.1 Interface: ThirdPartyCall

This interface provides the ability to setup, end and determine the status of a call.

8.1.1 Operation: makeCall

The invocation of **makeCall** requests to set-up a voice call between two addresses, **callingParty** and **calledParty**, provided that the invoking application is allowed to connect them. Optionally the application can also indicate the charging information (**charging**).

By invoking this operation the application may monitor the status of the requested call. The returned parameter, **callIdentifier**, can be used to identify the call. In order to receive the information on call status the application has to explicitly invoke **getCallInformation**.

8.1.1.1 Input message: makeCallRequest

Part name	Part type	Optional	Description
callingParty	xsd:anyURI	No	It contains the address of the first user involved in the call
calledParty	xsd:anyURI	No	It contains the address of the second user involved in the call
charging	common:ChargingInformation	Yes	Charge to apply to the call