



**SLOVENSKI STANDARD**  
**SIST ES 202 391-11 V1.3.1:2008**

**01-september-2008**

---

CXdfh`Xcglcd`Xc`glcf]hj Y`fCG5 L`!`Gd`YfbY`glcf]hj Y`DUf`UmL`!`%`%`XY`.'Nj c b]`\_`]W  
fDUf`UmL`&L

Open Service Access (OSA) - Parlay X Web Services - Part 11: Audio Call (Parlay X 2)

**iTeh STANDARD PREVIEW**  
**(standards.iteh.ai)**

[SIST ES 202 391-11 V1.3.1:2008](https://standards.iteh.ai/catalog/standards/sist/c38ba24d-8e7f-42b5-ae8e-782af5c96ca/sist-es-202-391-11-v1-3-1-2008)

Ta slovenski standard je istoveten z: **ES 202 391-11 Version 1.3.1**

---

**ICS:**

35.100.01	Medsebojno povezovanje odprtih sistemov na splošno	Open systems interconnection in general
-----------	---	--

**SIST ES 202 391-11 V1.3.1:2008**                      **en**

**iTeh STANDARD PREVIEW**  
**(standards.iteh.ai)**

[SIST ES 202 391-11 V1.3.1:2008](https://standards.iteh.ai/catalog/standards/sist/c38ba24d-8e7f-42b5-ae8e-782af73c96ca/sist-es-202-391-11-v1-3-1-2008)

<https://standards.iteh.ai/catalog/standards/sist/c38ba24d-8e7f-42b5-ae8e-782af73c96ca/sist-es-202-391-11-v1-3-1-2008>

# ETSI ES 202 391-11 V1.3.1 (2008-05)

---

ETSI Standard

**Open Service Access (OSA);  
Parlay X Web Services;  
Part 11: Audio Call  
(Parlay X 2)**



**iTeh STANDARD PREVIEW  
(standards.iteh.ai)**

[SIST ES 202 391-11 V1.3.1:2008](https://standards.iteh.ai/catalog/standards/sist/c38ba24d-8e7f-42b5-ae8e-782af73c96ca/sist-es-202-391-11-v1-3-1-2008)

<https://standards.iteh.ai/catalog/standards/sist/c38ba24d-8e7f-42b5-ae8e-782af73c96ca/sist-es-202-391-11-v1-3-1-2008>



## Reference

---

RES/TISPAN-01056-11-OSA

## Keywords

---

API, OSA, service

**ETSI**

650 Route des Lucioles  
F-06921 Sophia Antipolis Cedex - FRANCE

---

Tel.: +33 4 92 94 42 00 Fax: +33 4 93 65 47 16

Siret N° 348 623 562 00017 - NAF 742 C  
Association à but non lucratif enregistrée à la  
Sous-Préfecture de Grasse (06) N° 7803/88

**iTeh STANDARD PREVIEW**  
**(standards.iteh.ai)**

SIST ES 202 391-11 V1.3.1:2008

<https://standards.iteh.ai/catalog/standards/sist/c38ba24d-8e7f-42b5-ac8e-782af73c96c4/sist/es-202-391-11-v1-3-1-2008>

**Important notice**

Individual copies of the present document can be downloaded from:

<http://www.etsi.org>

The present document may be made available in more than one electronic version or in print. In any case of existing or perceived difference in contents between such versions, the reference version is the Portable Document Format (PDF). In case of dispute, the reference shall be the printing on ETSI printers of the PDF version kept on a specific network drive within ETSI Secretariat.

Users of the present document should be aware that the document may be subject to revision or change of status. Information on the current status of this and other ETSI documents is available at

<http://portal.etsi.org/tb/status/status.asp>

If you find errors in the present document, please send your comment to one of the following services:

[http://portal.etsi.org/chaicor/ETSI\\_support.asp](http://portal.etsi.org/chaicor/ETSI_support.asp)

---

**Copyright Notification**

No part may be reproduced except as authorized by written permission.  
The copyright and the foregoing restriction extend to reproduction in all media.

© European Telecommunications Standards Institute 2008.

© The Parlay Group 2008.

All rights reserved.

**DECT™**, **PLUGTESTS™**, **UMTS™**, **TIPHON™**, the TIPHON logo and the ETSI logo are Trade Marks of ETSI registered for the benefit of its Members.

**3GPP™** is a Trade Mark of ETSI registered for the benefit of its Members and of the 3GPP Organizational Partners.

# Contents

Intellectual Property Rights .....	4
Foreword.....	4
1 Scope .....	5
2 References .....	5
2.1 Normative references .....	5
3 Definitions and abbreviations.....	6
3.1 Definitions .....	6
3.2 Abbreviations .....	6
4 Detailed service description .....	6
5 Namespaces.....	6
6 Sequence diagrams .....	6
6.1 Play audio and check status .....	6
6.2 Play audio and cancel .....	8
7 XML Schema data type definition .....	8
7.1 MessageStatus enumeration .....	8
8 Web Service interface definition.....	9
8.1 Interface: PlayAudio.....	9
8.1.1 Operation: playTextMessage .....	9
8.1.1.1 Input message: playTextMessageRequest .....	9
8.1.1.2 Output message: playTextMessageResponse.....	9
8.1.1.3 Referenced faults.....	9
8.1.2 Operation: playAudioMessage.....	10
8.1.2.1 Input message: playAudioMessageRequest .....	10
8.1.2.2 Output message: playAudioMessageResponse .....	10
8.1.2.3 Referenced faults.....	10
8.1.3 Operation: playVoiceXmlMessage .....	10
8.1.3.1 Input message: playVoiceXmlMessageRequest.....	10
8.1.3.2 Output message: playVoiceXMLMessageResponse.....	11
8.1.3.3 Referenced faults.....	11
8.1.4 Operation: getMessageStatus.....	11
8.1.4.1 Input message: getMessageStatusRequest .....	11
8.1.4.2 Output message: getMessageStatusResponse .....	11
8.1.4.3 Referenced faults.....	11
8.1.5 Operation: endMessage.....	11
8.1.5.1 Input message: endMessageRequest .....	12
8.1.5.2 Output message: endMessageResponse .....	12
8.1.5.3 Referenced faults.....	12
9 Fault definitions.....	12
10 Service policies .....	12
<b>Annex A (normative): WSDL for Audio Call.....</b>	<b>13</b>
<b>Annex B (informative): Bibliography.....</b>	<b>14</b>
History .....	15

---

## Intellectual Property Rights

IPRs essential or potentially essential to the present document may have been declared to ETSI. The information pertaining to these essential IPRs, if any, is publicly available for **ETSI members and non-members**, and can be found in ETSI SR 000 314: "*Intellectual Property Rights (IPRs); Essential, or potentially Essential, IPRs notified to ETSI in respect of ETSI standards*", which is available from the ETSI Secretariat. Latest updates are available on the ETSI Web server (<http://webapp.etsi.org/IPR/home.asp>).

Pursuant to the ETSI IPR Policy, no investigation, including IPR searches, has been carried out by ETSI. No guarantee can be given as to the existence of other IPRs not referenced in ETSI SR 000 314 (or the updates on the ETSI Web server) which are, or may be, or may become, essential to the present document.

---

## Foreword

This ETSI Standard (ES) has been produced by ETSI Technical Committee Telecommunications and Internet converged Services and Protocols for Advanced Networking (TISPAN).

The present document is part 11 of a multi-part deliverable covering Open Service Access (OSA); Parlay X Web Services, as identified below:

- Part 1: "Common";
- Part 2: "Third Party Call";
- Part 3: "Call Notification";
- Part 4: "Short Messaging";
- Part 5: "Multimedia Messaging";
- Part 6: "Payment";
- Part 7: "Account Management";
- Part 8: "Terminal Status";
- Part 9: "Terminal Location";
- Part 10: "Call Handling";
- Part 11: "Audio Call";**
- Part 12: "Multimedia Conference";
- Part 13: "Address List Management";
- Part 14: "Presence".

iTeH STANDARD PREVIEW  
(standards.iteh.ai)

[SIST ES 202 391-11 V1.3.1:2008](https://standards.iteh.ai/catalog/standards/sist/c38ba24d-8e7f-42b5-ae8e-82af73c96ca/sist-es-202-391-11-v1-3-1-2008)

<https://standards.iteh.ai/catalog/standards/sist/c38ba24d-8e7f-42b5-ae8e-82af73c96ca/sist-es-202-391-11-v1-3-1-2008>

The present document has been defined jointly between ETSI, The Parlay Group (<http://www.parlay.org>) and the 3GPP.

**The present document forms part of the Parlay X 2.2 set of specifications.**

**The present document is equivalent to 3GPP TS 29.199-11 V6.5.0 (Release 6).**

---

# 1 Scope

The present document is part 11 of the Stage 3 Parlay X 2 Web Services specification for Open Service Access (OSA).

The OSA specifications define an architecture that enables application developers to make use of network functionality through an open standardized interface, i.e. the OSA APIs.

The present document specifies the Call Handling Web Service. The following are defined here:

- Name spaces.
- Sequence diagrams.
- Data definitions.
- Interface specification plus detailed method descriptions.
- Fault definitions.
- Service Policies.
- WSDL Description of the interfaces.

---

# 2 References

References are either specific (identified by date of publication and/or edition number or version number) or non-specific.

- For a specific reference, subsequent revisions do not apply.
- Non-specific reference may be made only to a complete document or a part thereof and only in the following cases:
  - if it is accepted that it will be possible to use all future changes of the referenced document for the purposes of the referring document;
  - for informative references.

Referenced documents which are not found to be publicly available in the expected location might be found at <http://docbox.etsi.org/Reference>.

For online referenced documents, information sufficient to identify and locate the source shall be provided. Preferably, the primary source of the referenced document should be cited, in order to ensure traceability. Furthermore, the reference should, as far as possible, remain valid for the expected life of the document. The reference shall include the method of access to the referenced document and the full network address, with the same punctuation and use of upper case and lower case letters.

NOTE: While any hyperlinks included in this clause were valid at the time of publication ETSI cannot guarantee their long term validity.

## 2.1 Normative references

The following referenced documents are indispensable for the application of the present document. For dated references, only the edition cited applies. For non-specific references, the latest edition of the referenced document (including any amendments) applies.

[1] W3C Recommendation (2 May 2001): "XML Schema Part 2: Datatypes".

NOTE: Available at <http://www.w3.org/TR/2001/REC-xmlschema-2-20010502/>.

- [2] ETSI ES 202 391-1: "Open Service Access (OSA); Parlay X Web Services; Part 1: Common (Parlay X 2)".

---

## 3 Definitions and abbreviations

### 3.1 Definitions

For the purposes of the present document, the terms and definitions given in ES 202 391-1 [2] apply.

### 3.2 Abbreviations

For the purposes of the present document, the abbreviations given in ES 202 391-1 [2] apply.

---

## 4 Detailed service description

The Audio Call service provides a flexible way to provide vocal message delivery. The interface is very simple, not requiring the developer to manage the creation of the call nor the interactions with the call to deliver the voice message.

There are three mechanisms which may be utilized for the vocal message content:

- Text, to be rendered using a Text-To-Speech (TTS) engine.
- Audio content (such as .WAV content), to be rendered by an audio player.
- VoiceXML, to be rendered using a VoiceXML browser.

The service may provide one, two or all three mechanisms, with the service policies providing the mechanism for determining which are available.

---

## 5 Namespaces

The AudioCall interface uses the namespace:

`http://www.csapi.org/wsdl/parlayx/audio_call/v2_2`

The data types are defined in the namespace:

`http://www.csapi.org/schema/parlayx/audio_call/v2_1`

The "xsd" namespace is used in the present document to refer to the XML Schema data types defined in XML Schema [1]. The use of the name "xsd" is not semantically significant.

---

## 6 Sequence diagrams

### 6.1 Play audio and check status

Pattern: Request / response.

This example shows an audio message being played, and the different responses to status requests that occur at different phases. Note that the last response, a service exception, reflects the transient nature of results, and that these results will expire.



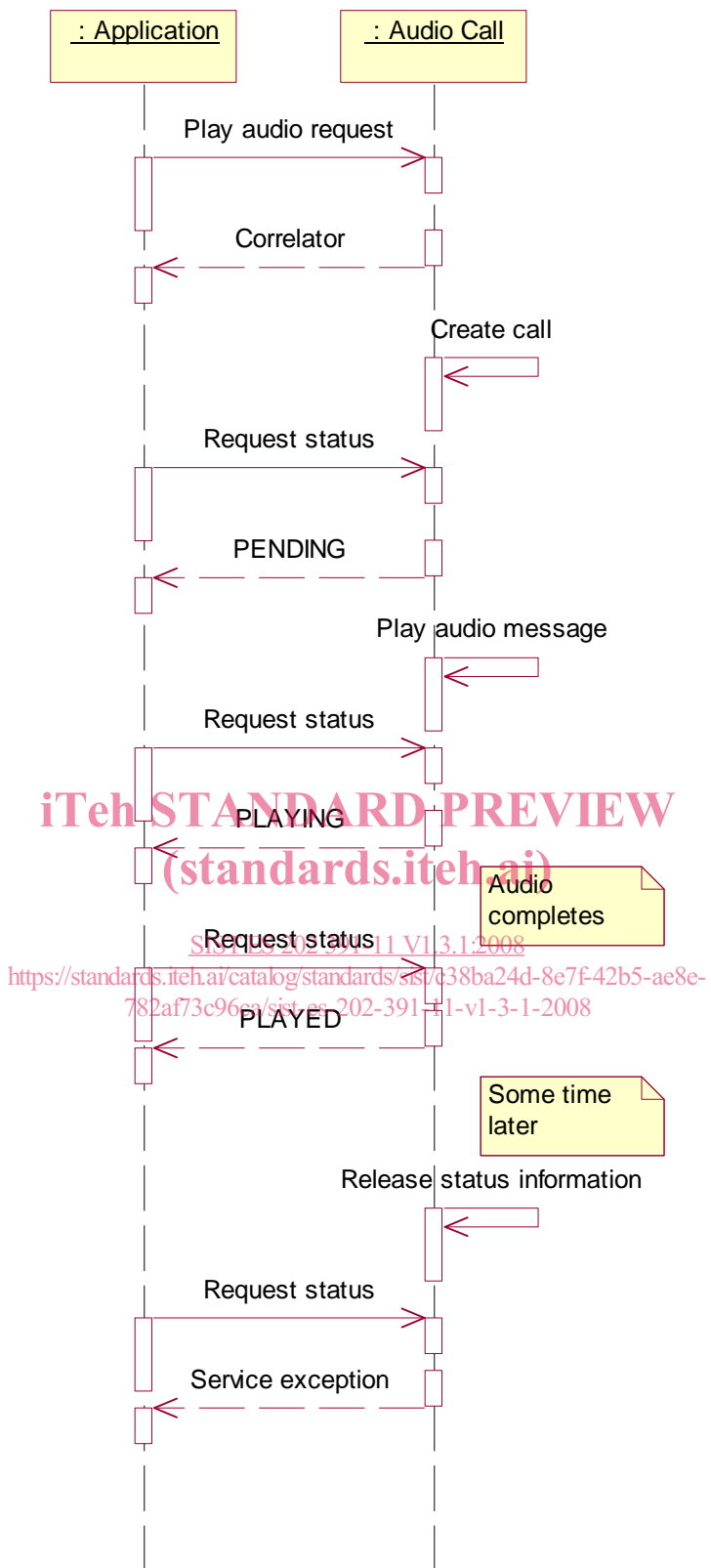


Figure 1