



SLOVENSKI STANDARD
SIST EN 4425:2009

01-junij-2009

Aeronavtika - Podložke z zavihkom iz korozijsko odpornega jekla za kontrolne palice pri krmiljenju - Mere

Aerospace series - Washers, tab in corrosion resisting steel for flight control rods - Dimensions

Luft- und Raumfahrt - Sicherungsbleche aus korrosionsbeständigem Stahl, für Bediengestänge von Flugsteuerungen - Maße

Série aérospatiale - Freins d'écrous en acier résistant à la corrosion pour bielles de commandes de vol - Dimensions

<https://standards.iteh.ai/catalog/standards/sist/9150f8c4-4865-4bf3-8078-4f9f7c1f5707/sist-en-4425-2009>

Ta slovenski standard je istoveten z: EN 4425:2006

ICS:

49.030.50	Podložke in drugi blokirni elementi	Washers and other locking elements
-----------	-------------------------------------	------------------------------------

SIST EN 4425:2009

en,de

iTeh STANDARD PREVIEW
(standards.iteh.ai)

SIST EN 4425:2009

<https://standards.iteh.ai/catalog/standards/sist/9150f8c4-4865-4bf3-8078-49f7c1f5707/sist-en-4425-2009>

EUROPEAN STANDARD
NORME EUROPÉENNE
EUROPÄISCHE NORM

EN 4425

June 2006

ICS 49.030.50

English Version

Aerospace series - Washers, tab in corrosion resisting steel for flight control rods - Dimensions

Série aérospatiale - Freins d'écrous en acier résistant à la
corrosion pour bielles de commandes de vol - Dimensions

Luft- und Raumfahrt - Sicherungsbleche aus
korrosionsbeständigem Stahl, für Bediengestänge von
Flugsteuerungen - Maße

This European Standard was approved by CEN on 20 April 2006.

CEN members are bound to comply with the CEN/CENELEC Internal Regulations which stipulate the conditions for giving this European Standard the status of a national standard without any alteration. Up-to-date lists and bibliographical references concerning such national standards may be obtained on application to the Central Secretariat or to any CEN member.

This European Standard exists in three official versions (English, French, German). A version in any other language made by translation under the responsibility of a CEN member into its own language and notified to the Central Secretariat has the same status as the official versions.

CEN members are the national standards bodies of Austria, Belgium, Cyprus, Czech Republic, Denmark, Estonia, Finland, France, Germany, Greece, Hungary, Iceland, Ireland, Italy, Latvia, Lithuania, Luxembourg, Malta, Netherlands, Norway, Poland, Portugal, Romania, Slovakia, Slovenia, Spain, Sweden, Switzerland and United Kingdom.

[SIST EN 4425:2009](https://standards.iteh.ai/catalog/standards/sist/9150f8c4-4865-4bf3-8078-49f7c1f5707/sist-en-4425-2009)

<https://standards.iteh.ai/catalog/standards/sist/9150f8c4-4865-4bf3-8078-49f7c1f5707/sist-en-4425-2009>



EUROPEAN COMMITTEE FOR STANDARDIZATION
COMITÉ EUROPÉEN DE NORMALISATION
EUROPÄISCHES KOMITEE FÜR NORMUNG

Management Centre: rue de Stassart, 36 B-1050 Brussels

Contents

Page

Foreword.....	3
1 Scope	4
2 Normative references	4
3 Required characteristics	4
4 Designation	6
5 Marking	6
6 Qualification	6

iTeh STANDARD PREVIEW
(standards.iteh.ai)

[SIST EN 4425:2009](https://standards.iteh.ai/catalog/standards/sist/9150f8c4-4865-4bf3-8078-49f7c1f5707/sist-en-4425-2009)

<https://standards.iteh.ai/catalog/standards/sist/9150f8c4-4865-4bf3-8078-49f7c1f5707/sist-en-4425-2009>

Foreword

This European Standard (EN 4425:2006) has been prepared by the European Association of Aerospace Manufacturers - Standardization (AECMA-STAN).

After enquiries and votes carried out in accordance with the rules of this Association, this Standard has received the approval of the National Associations and the Official Services of the member countries of AECMA, prior to its presentation to CEN.

This European Standard shall be given the status of a national standard, either by publication of an identical text or by endorsement, at the latest by **December 2006**, and conflicting national standards shall be withdrawn at the latest by **December 2006**.

Attention is drawn to the possibility that some of the elements of this document may be the subject of patent rights. CEN [and/or CENELEC] shall not be held responsible for identifying any or all such patent rights.

According to the CEN/CENELEC Internal Regulations, the national standards organizations of the following countries are bound to implement this European Standard: Austria, Belgium, Cyprus, Czech Republic, Denmark, Estonia, Finland, France, Germany, Greece, Hungary, Iceland, Ireland, Italy, Latvia, Lithuania, Luxembourg, Malta, Netherlands, Norway, Poland, Portugal, Romania, Slovakia, Slovenia, Spain, Sweden, Switzerland and the United Kingdom.

ITEH STANDARD PREVIEW
(standards.iteh.ai)

SIST EN 4425:2009

<https://standards.iteh.ai/catalog/standards/sist/9150f8c4-4865-4bf3-8078-49f7c1f5707/sist-en-4425-2009>

EN 4425:2006 (E)**1 Scope**

This standard specifies the characteristics of tab washers for flight control rods.

These tab washers are intended to immobilise the rod end in relation to the rod body, whilst allowing a positional adjustment.

2 Normative references

The following referenced documents are indispensable for the application of this document. For dated references, only the edition cited applies. For undated references, the latest edition of the referenced document (including any amendments) applies.

EN 3488, *Aerospace series — Steel FE-PA13 — Softened — $500 \leq R_m \leq 750$ MPa — Sheet and strip — $0,5 \leq a \leq 6$ mm.* ¹⁾

EN 9100, *Aerospace series — Quality management systems — Requirements (based on ISO 9001:2000) and Quality systems — Model for quality assurance in design, development, production, installation and servicing (based on ISO 9001:1994).*

3 Required characteristics**3.1 Dimensions – Masses**

Configuration shall correspond with Figure 1.

The dimensions and masses shall conform with values quoted in Table 1.

3.2 Surface roughness

$R_a = 3,2 \mu\text{m}$.

3.3 Material

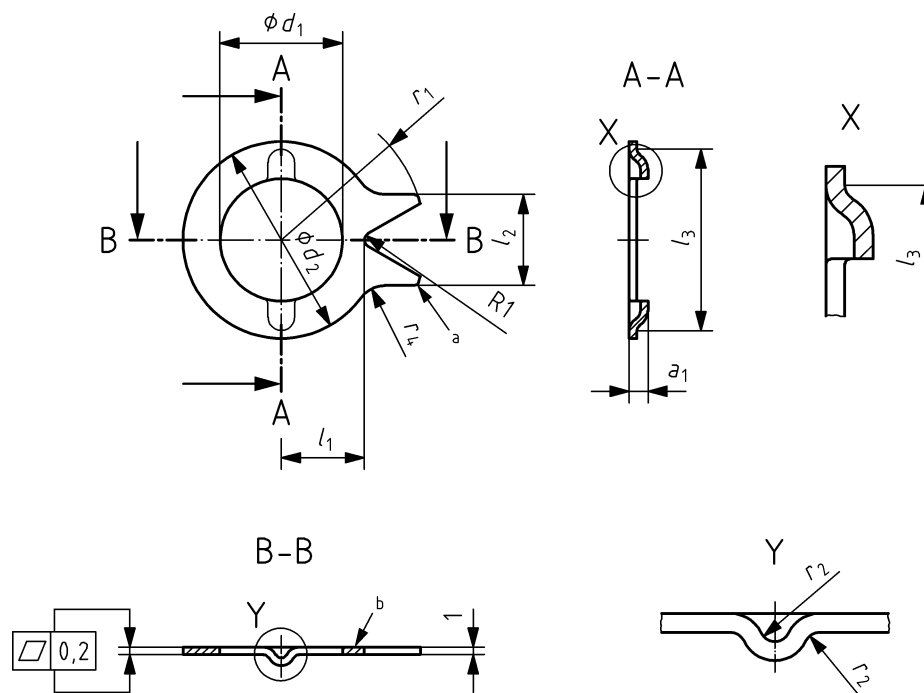
According to EN 3488

iTeh STANDARD PREVIEW
(standards.iteh.ai)

SIST EN 4425:2009

https://standards.iteh.ai/catalog/standards/sist/44-4865-4/b3-8078-49f7c1f5707/sist-en-4425-2009

1) Published as AECMA Prestandard at the date of publication of the present standard.



- a Optional radius
b Identification mark

iTeh STANDARD PREVIEW
(standards.iteh.ai)

Figure 1

SIST EN 4425:2009
Table 1
<https://standards.iteh.ai/catalog/standards/sist/9150f8c4-4865-4bf3-8078-49f7c1f5707/sist-en-4425-2009>

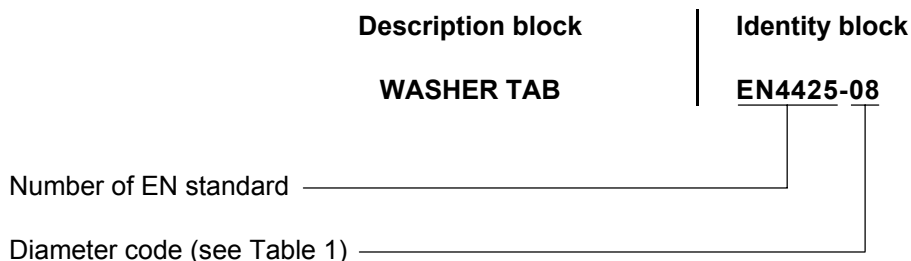
Dimensions in millimetres

Diameter code	d_1	d_2	a_1	l_1	l_2	l_3	r_1	r_2	r_3	r_4	Mass g ≈
	$+0,1$ 0	$+0,5$ 0	$\pm 0,25$	$\pm 0,25$	$\pm 0,25$	$\pm 0,25$	$\pm 0,5$	$\pm 0,25$	$\pm 0,25$	$\pm 0,5$	
08	8,2	16	1,8	6	8	14	10,5	0,6	1,0	1,5	1,0
10	10,2	18	2,5	8	10	16	13	0,8	1,2	3	1,6
12	12,2	21		9	11	19	16				2,0
14	14,2	24		10	12	21	17				2,4
16	16,2	26		11		24	19				2,7

EN 4425:2006 (E)**4 Designation**

Each tab washer shall only be designated as in the following example:

EXAMPLE



NOTE If necessary, the code I9005 shall be placed between the description block and the identity block.

5 Marking

In addition to the manufacturer's own marking, each tab washer and its packaging shall be marked, using the identity block as defined in Clause 4 of this standard.

The marking position and method are at the manufacturer's option. The marking, when it is possible, shall be indelible and shall not impair the characteristics of the tab washer.

(standards.iteh.ai)

6 Qualification

According to EN 9100.

SIST EN 4425:2009
<https://standards.iteh.ai/catalog/standards/sist/9150f8c4-4865-4bf3-8078-49f7c1f5707/sist-en-4425-2009>