
**Diesel engines — Cradle-mounted in-line
fuel injection pumps — Mounting
dimensions**

*Moteurs diesels — Pompes d'injection en ligne à fixation par le berceau —
Dimensions de montage*

iTeh STANDARD PREVIEW
(standards.iteh.ai)

[ISO 7879:1997](#)

<https://standards.iteh.ai/catalog/standards/sist/39a23ce0-7955-47e9-b37d-59a997c0e46f/iso-7879-1997>



Foreword

ISO (the International Organization for Standardization) is a worldwide federation of national standards bodies (ISO member bodies). The work of preparing International Standards is normally carried out through ISO technical committees. Each member body interested in a subject for which a technical committee has been established has the right to be represented on that committee. International organizations, governmental and non-governmental, in liaison with ISO, also take part in the work. ISO collaborates closely with the International Electrotechnical Commission (IEC) on all matters of electrotechnical standardization.

Draft International Standards adopted by the technical committees are circulated to the member bodies for voting. Publication as an International Standard requires approval by at least 75 % of the member bodies casting a vote.

iTeh STANDARD PREVIEW

International Standard ISO 7879 was prepared by Technical Committee ISO/TC 22, *Road vehicles*, Sub-committee SC 7, *Injection equipment and filters for use on road vehicles*.

[ISO 7879:1997](#)

This third edition cancels and replaces the second edition (ISO 7879:1990), of which it constitutes a minor revision.

Annex A of this International Standard is for information only.

© ISO 1997

All rights reserved. Unless otherwise specified, no part of this publication may be reproduced or utilized in any form or by any means, electronic or mechanical, including photocopying and microfilm, without permission in writing from the publisher.

International Organization for Standardization
Case postale 56 • CH-1211 Genève 20 • Switzerland
Internet central@iso.ch
X.400 c=ch; a=400net; p=iso; o=isocs; s=central

Printed in Switzerland

Diesel engines — Cradle-mounted in-line fuel injection pumps — Mounting dimensions

1 Scope

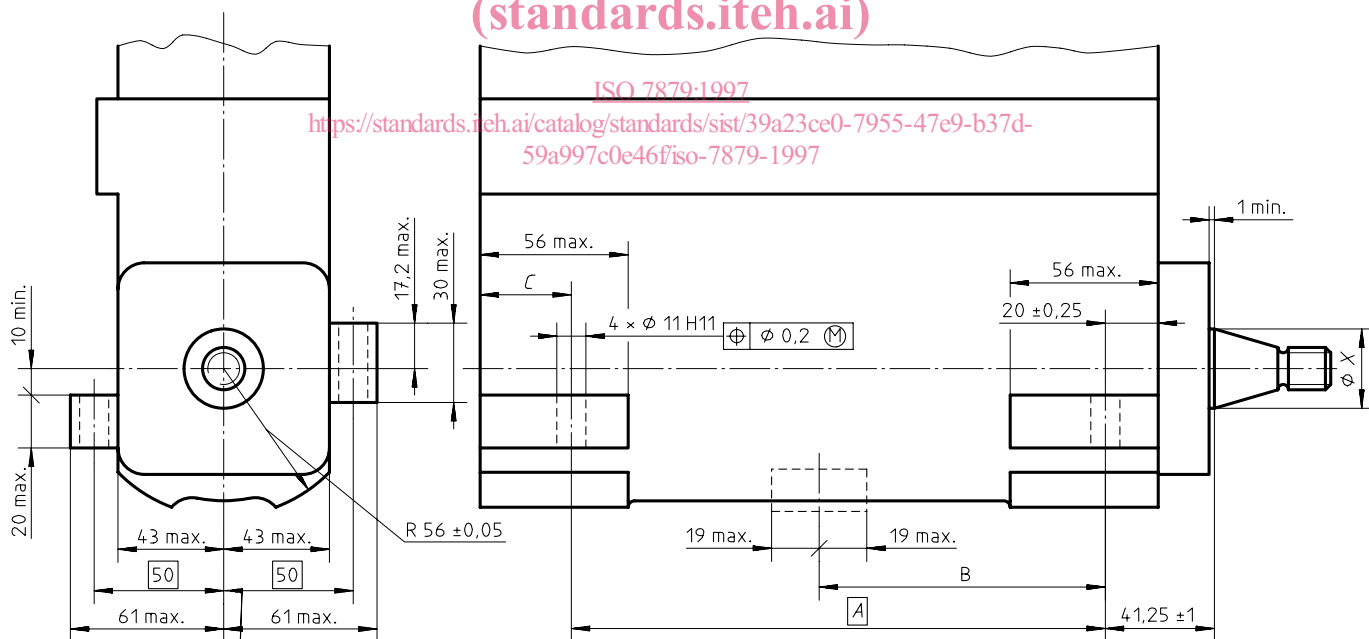
This International Standard specifies the dimensional requirements of cradle-mounted in-line fuel injection pumps for compression-ignition (diesel) engines.

2 Dimensions and tolerances

See figures 1, 2 and 3.

iTeh STANDARD PREVIEW
(standards.iteh.ai)

Dimensions in millimetres

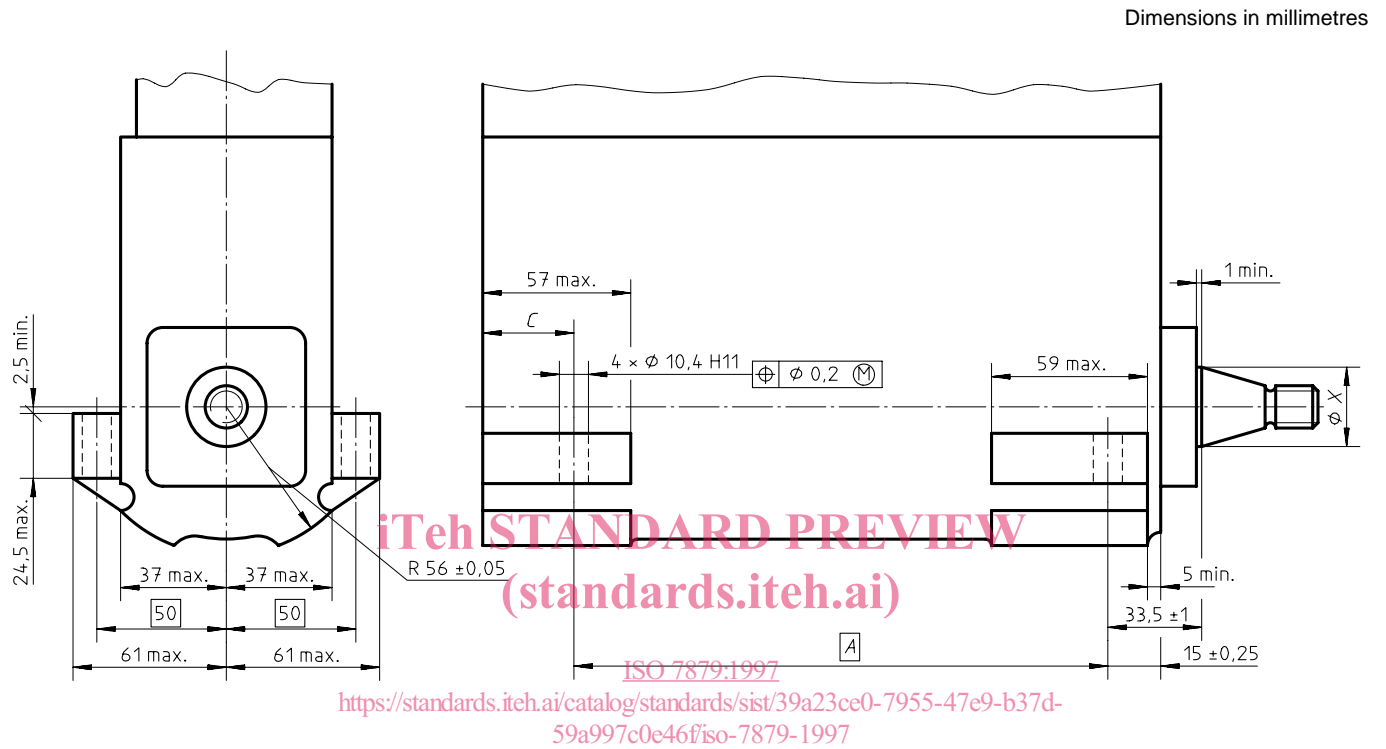


Number of cylinders	X nom.	A	B	$C \pm 0,25$
4	25 or 30	132	—	32
6		202	—	34,5
8		272	142,5	37

Figure 1 — Cradle-mounted in-line fuel injection pump — Type 1

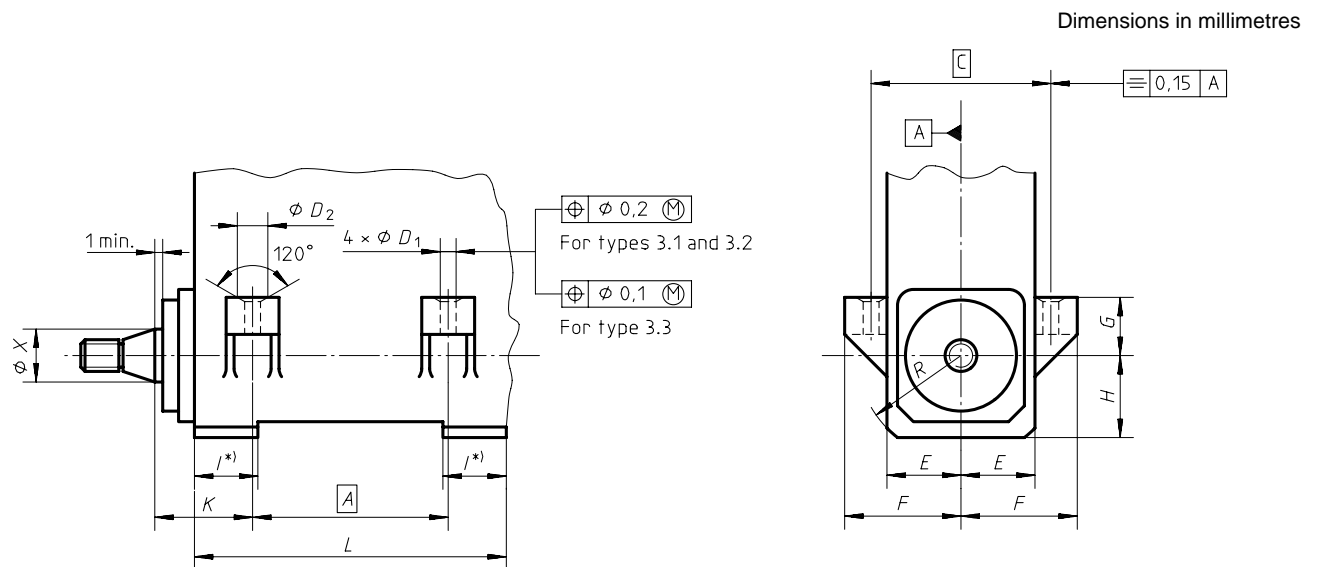
3 Other dimensions and specifications

Dimensions and requirements not given in this International Standard are left to the manufacturers's choice.



Number of cylinders	X nom.	A	C ± 0,25
4	25 or 30	132	37
6		202	31
8		272	45

Figure 2 — Cradle-mounted in-line fuel injection pump — Type 2



*) Maximum seating surface.

iTeh STANDARD PREVIEW

					1	D_2	E	F	G	H	I	K	L	R
					H13	$+0,5$ 0	max.	max.	max.	max.	max.	± 1	max.	$\pm 0,05$
3.1	4	120	17 or 20	84	8,5	15,5	32,5	55	28	39	55 1)	24,5	152	45
	6	184											216	
	8	248											280	
3.2	4	108	20 or 25	84	8,5	18	35	55	7	44	36	19,5	130	50
	6	164											186	
	8	218											240	
3.3	4	132	25, 30 or 35	100	10,5	19,5	53	64	18	53	49	33,5	172	56
	6	202											242	
	8	272											312	
	10	345											385	
	12	415											455	

1) Only for type 3.1: Maximum engine seating surface may extend over the whole length L max.

Figure 3 — Cradle-mounted in-line fuel injection pump — Type 3

Annex A
(informative)

Bibliography

- [1] ISO 6519:1993, *Diesel engines — Fuel injection pumps — Tapers for shaft ends and hubs.*
- [2] ISO 7299:1996, *Diesel engines — End-mounting flanges for fuel injection pumps.*
- [3] ISO 7612:1994, *Diesel engines — Base-mounted in-line fuel injection pumps — Mounting dimensions.*

iTeh STANDARD PREVIEW
(standards.iteh.ai)

[ISO 7879:1997](https://standards.iteh.ai/catalog/standards/sist/39a23ce0-7955-47e9-b37d-59a997c0e46f/iso-7879-1997)

<https://standards.iteh.ai/catalog/standards/sist/39a23ce0-7955-47e9-b37d-59a997c0e46f/iso-7879-1997>

iTeh STANDARD PREVIEW
(standards.iteh.ai)

ISO 7879:1997

<https://standards.iteh.ai/catalog/standards/sist/39a23ce0-7955-47e9-b37d-59a997c0e46f/iso-7879-1997>

iTeh STANDARD PREVIEW
(standards.iteh.ai)

ISO 7879:1997

<https://standards.iteh.ai/catalog/standards/sist/39a23ce0-7955-47e9-b37d-59a997c0e46f/iso-7879-1997>

ICS 43.060.40

Descriptors: road vehicles, motor vehicles, internal combustion engines, diesel engines, injection pumps, form specifications, dimensions, mounting dimensions.

Price based on 4 pages
