



SLOVENSKI STANDARD

SIST EN 12977-3:2008

01-november-2008

Nadomešča:

SIST ENV 12977-3:2002

Toplotni sončni sistemi in sestavni deli - Neserijsko izdelani sistemi - 3. del: Določanje preskusnih metod za hranilnike toplote, ogrevane s soncem

Thermal solar systems and components - Custom built systems - Part 3: Performance test methods for solar water heater stores

Thermische Solaranlagen und ihre Bauteile - Kundenspezifisch gefertigte Anlagen - Teil 3: Leistungsprüfung von Warmwasserspeichern für Solaranlagen

Installations solaires thermiques et leurs composants - Installations assemblées à façon - Partie 3: Méthodes d'essai des performances des dispositifs de stockage des installations de chauffage solaire de l'eau

Ta slovenski standard je istoveten z: EN 12977-3:2008

ICS:

27.160	Sončna energija	Solar energy engineering
91.140.10	Sistemi centralnega ogrevanja	Central heating systems
91.140.65	Oprema za ogrevanje vode	Water heating equipment

SIST EN 12977-3:2008

en,fr,de

iTeh STANDARD PREVIEW
(standards.iteh.ai)

SIST EN 12977-3:2008

<https://standards.iteh.ai/catalog/standards/sist/f4537b03-d685-4a1c-bf0f-bd3da44f3303/sist-en-12977-3-2008>

EUROPEAN STANDARD
NORME EUROPÉENNE
EUROPÄISCHE NORM

EN 12977-3

August 2008

ICS 91.140.10; 91.140.65; 27.160

Supersedes ENV 12977-3:2001

English Version

**Thermal solar systems and components - Custom built systems
- Part 3: Performance test methods for solar water heater stores**

Installations solaires thermiques et leurs composants -
Installations assemblées à façon - Partie 3: Méthodes
d'essai des performances des dispositifs de stockage des
installations de chauffage solaire de l'eau

Thermische Solaranlagen und ihre Bauteile -
Kundenspezifisch gefertigte Anlagen - Teil 3:
Leistungsprüfung von Warmwasserspeichern für
Solaranlagen

This European Standard was approved by CEN on 15 May 2008.

CEN members are bound to comply with the CEN/CENELEC Internal Regulations which stipulate the conditions for giving this European Standard the status of a national standard without any alteration. Up-to-date lists and bibliographical references concerning such national standards may be obtained on application to the CEN Management Centre or to any CEN member.

This European Standard exists in three official versions (English, French, German). A version in any other language made by translation under the responsibility of a CEN member into its own language and notified to the CEN Management Centre has the same status as the official versions.

CEN members are the national standards bodies of Austria, Belgium, Bulgaria, Cyprus, Czech Republic, Denmark, Estonia, Finland, France, Germany, Greece, Hungary, Iceland, Ireland, Italy, Latvia, Lithuania, Luxembourg, Malta, Netherlands, Norway, Poland, Portugal, Romania, Slovakia, Slovenia, Spain, Sweden, Switzerland and United Kingdom.

<https://standards.iteh.ai/catalog/standards/sist/f4537b03-d685-4a1c-bf0f-bd3da44f3303/sist-en-12977-3-2008>



EUROPEAN COMMITTEE FOR STANDARDIZATION
COMITÉ EUROPÉEN DE NORMALISATION
EUROPÄISCHES KOMITEE FÜR NORMUNG

Management Centre: rue de Stassart, 36 B-1050 Brussels

Contents

Page

Foreword.....	4
Introduction	5
1 Scope	6
2 Normative references	6
3 Terms and definitions	6
4 Symbols and abbreviations	10
5 Store classification	11
6 Laboratory store testing	12
6.1 Requirements on the testing stand.....	12
6.1.1 General.....	12
6.1.2 Measured quantities and measuring procedure.....	15
6.2 Installation of the store	15
6.2.1 Mounting.....	15
6.2.2 Connection	16
6.3 Test and evaluation procedures.....	16
6.3.1 General.....	16
6.3.2 Test sequences	17
6.3.3 Data processing of the test sequences.....	28
7 Store test combined with a system test according to ISO 9459-5.....	30
8 Store test according to EN 12897.....	30
9 Test report	30
9.1 General.....	30
9.2 Description of the store	30
9.3 Test results.....	31
9.4 Parameters for the simulation.....	32
Annex A (normative) Store model benchmark tests	33
A.1 General.....	33
A.2 Temperature of the store during stand-by	33
A.3 Heat transfer from heat exchanger to store	33
Annex B (normative) Verification of store test results.....	35
B.1 General.....	35
B.2 Test sequences for verification of store test results	35
B.2.1 Verification sequences from measurements on a store testing stand	35
B.2.2 Test sequences obtained during a whole system test according to ISO 9459-5.....	42
B.3 Verification procedure.....	42
B.3.1 General.....	42
B.3.2 Error in transferred energies	42
B.3.3 Error in transferred power	43
Annex C (normative) Benchmarks for the parameter identification	44
Annex D (informative) Requirements for the numerical store model	45
D.1 General.....	45
D.2 Assumptions	45
D.3 Calculation of energy balance.....	45

Annex E (informative) Determination of store parameters by means of “up-scaling” and “down-scaling”	47
E.1 General	47
E.2 Requirements	47
E.3 Determination of store parameters	48
E.3.1 Thermal capacity of store	48
E.3.2 Height of store	48
E.3.3 Determination of heat loss capacity rate	48
E.3.4 Relative heights of the connections and the temperature sensors	48
E.3.5 Heat exchangers	48
E.3.6 Parameter describing the degradation of thermal stratification during stand-by	49
E.3.7 Parameter describing the quality of thermal stratification during direct discharge	49
Annex F (informative) Determination of hot water comfort	50
Bibliography	51

iTeh STANDARD PREVIEW (standards.iteh.ai)

SIST EN 12977-3:2008

<https://standards.iteh.ai/catalog/standards/sist/f4537b03-d685-4a1c-bf0f-bd3da44f3303/sist-en-12977-3-2008>

EN 12977-3:2008 (E)**Foreword**

This document (EN 12977-3:2008) has been prepared by Technical Committee CEN/TC 312 "Thermal solar systems and components", the secretariat of which is held by ELOT.

This European Standard shall be given the status of a national standard, either by publication of an identical text or by endorsement, at the latest by February 2009, and conflicting national standards shall be withdrawn at the latest by February 2009.

Attention is drawn to the possibility that some of the elements of this document may be the subject of patent rights. CEN [and/or CENELEC] shall not be held responsible for identifying any or all such patent rights.

This document supersedes ENV 12977-3:2001.

"Thermal solar systems and components — Custom built systems" consists of the following parts:

- *prCEN/TS 12977-1: General requirements for solar water heaters and combisystems*
- *prCEN/TS 12977-2: Test methods*
- *EN 12977-3: Performance test methods for solar water heater stores*
- *prCEN/TS 12977-4: Performance test methods for solar combistores*
- *prCEN/TS 12977-5: Performance test methods for control equipment*

NOTE The "prCEN/TS" standards are expected to become CEN/TS standards in the future.

According to the CEN/CENELEC Internal Regulations, the national standards organizations of the following countries are bound to implement this European Standard: Austria, Belgium, Bulgaria, Cyprus, Czech Republic, Denmark, Estonia, Finland, France, Germany, Greece, Hungary, Iceland, Ireland, Italy, Latvia, Lithuania, Luxembourg, Malta, Netherlands, Norway, Poland, Portugal, Romania, Slovakia, Slovenia, Spain, Sweden, Switzerland and the United Kingdom.

Introduction

The test methods for stores of solar heating systems as described in this European Standard are required for the determination of the thermal performance of small custom built systems as specified in prCEN/TS 12977-1.

The test method described in this European Standard delivers a complete set of parameters, which are needed for the simulation of the thermal behaviour of a store being part of a small custom built thermal solar system.

For the determination of store parameters such as the thermal capacity and the heat loss rate the method standardised in EN 12897 can be used as an alternative.

NOTE 1 The already existing test methods for stores of conventional heating systems are not sufficient with regard to thermal solar systems. This is due to the fact that the performance of thermal solar systems depends much more on the thermal behaviour of the store (e.g. stratification, heat losses), than conventional systems do. Hence this separate document for the performance characterisation of stores for solar heating systems is needed.

NOTE 2 For additional information about the test methods for the performance characterisation of stores, see [1] in Bibliography.

iTeh STANDARD PREVIEW
(standards.iteh.ai)

[SIST EN 12977-3:2008](https://standards.iteh.ai/catalog/standards/sist/f4537b03-d685-4a1c-bf0f-bd3da44f3303/sist-en-12977-3-2008)

<https://standards.iteh.ai/catalog/standards/sist/f4537b03-d685-4a1c-bf0f-bd3da44f3303/sist-en-12977-3-2008>

EN 12977-3:2008 (E)**1 Scope**

This European Standard specifies test methods for the performance characterization of stores which are intended for use in small custom built systems as specified in prCEN/TS 12977-1.

Stores tested according to this document are commonly used in solar hot water systems. However, also the thermal performance of all other thermal stores with water as storage medium can be assessed according to the test methods specified in this document.

The document applies to stores with a nominal volume between 50 l and 3 000 l.

This document does not apply to combistores. Performance test methods for solar combistores are specified in prCEN/TS 12977-4.

2 Normative references

The following referenced documents are indispensable for the application of this document. For dated references, only the edition cited applies. For undated references, the latest edition of the referenced document (including any amendments) applies.

EN 12828, *Heating systems in buildings — Design for water-based heating systems*

EN 12897, *Water supply – Specification for indirectly heated unvented (closed) storage water heaters*

EN ISO 9488:1999, *Solar energy — Vocabulary (ISO 9488:1999)*

ISO 9459-5, *Solar heating — Domestic water heating systems — Part 5: System performance characterization by means of whole-system tests and computer simulation*

3 Terms and definitions

For the purposes of this document, the terms and definitions given in EN ISO 9488:1999 and the following apply.

3.1**ambient temperature**

mean value of the temperature of the air surrounding the store

3.2**charge**

process of transferring energy into the store by means of a heat source

3.3**charge connection**

pipe connection used for charging the storage device

3.4**combistore**

one store used for both domestic hot water preparation and space heating

3.5**constant inlet temperature, $\tilde{v}_{x,i}$**

temperature which is achieved during charge ($x = C$) or discharge ($x = D$), if the mean value $\tilde{v}_{x,i}$ over the period of 0,5 “reduced charge/discharge volume” (see 3.34) is within $(\tilde{v}_{x,i} \pm 1) \text{ }^\circ\text{C}$

NOTE The symbol “~” above a certain value indicates that the corresponding value is a mean value.

3.6**constant flow rate, \tilde{V}**

flow rate which is achieved when the mean value of \tilde{V} over the period of 0,5 “reduced charge/discharge volumes” (see 3.34) is within $\tilde{V} \pm \tilde{V} \cdot 0,1$

NOTE The symbol “~” above a certain value indicates that the corresponding value is a mean value.

3.7**constant charge power, \tilde{P}_c**

charge power which is achieved when the mean value \tilde{P}_c over the period of 0,5 reduced charge volumes is within $\tilde{P}_c \pm \tilde{P}_c \cdot 0,1$

NOTE The symbol “~” above a certain value indicates that the corresponding value is a mean value.

iteh STANDARD PREVIEW
(standards.iteh.ai)

SIST EN 12977-3:2008

<https://standards.iteh.ai/catalog/standards/sist/f4537b03-d685-4a1c-bf0f-bd3da44f3303/sist-en-12977-3-2008>

3.8**conditioning**

process of creating a uniform temperature inside the store by discharging the store with $\tilde{v}_{D,i} = 20 \text{ }^\circ\text{C}$ until a steady state is reached

NOTE The conditioning at the beginning of a test sequence is intended to provide a well-defined initial system state, i. e. a uniform temperature in the entire store.

3.9**discharge connection**

pipe connection used for discharging the storage device

3.10**dead volume/dead capacity**

volume/capacity of the store which is only heated due to heat conduction (e.g. below a heat exchanger)

3.11**direct charge/discharge**

transfer or removal of thermal energy in or out of the store, by directly exchanging the fluid in the store

3.12**discharge**

process of decreasing thermal energy inside the store caused by the hot water load

EN 12977-3:2008 (E)**3.13
double port**

corresponding pair of inlet and outlet connections for direct charge/discharge of the store

NOTE Often, the store is charged or discharged via closed or open loops that are connected to the store through double ports.

**3.14
effective volume/effective capacity**

volume/capacity which is involved in the heat storing process if the store is operated in a usual way

**3.15
electrical (auxiliary) heating**

electrical heating element immersed into the store

**3.16
external auxiliary heating**

auxiliary heating device located outside the store. The heat is transferred to the store by direct or indirect charging via a charge loop. The external auxiliary heating is not considered as part of the store under test

**3.17
heat loss capacity rate, $(UA)_{s,a}$**

overall heat loss of the entire storage device per K of the temperature difference between the store temperature and the ambient air temperature

NOTE The heat loss capacity rate depends on the flow conditions inside the store. Hence a stand-by heat loss capacity rate and an operating heat loss capacity rate are defined. If $(UA)_{s,a}$ is mentioned without specification, $(UA)_{s,a}$ represents the stand-by heat loss capacity rate.

**3.18
heat transfer capacity rate**

thermal power transferred per K of the temperature difference

SIST EN 12977-3:2008

<https://standards.iteh.ai/catalog/standards/sist/f4537b03-d685-4a1c-bf0f-bd3da44f3303/sist-en-12977-3-2008>

**3.19
immersed heat exchanger**

heat exchanger which is completely surrounded with the fluid in the store tank

**3.20
indirect charge/discharge**

transfer or removal of thermal energy into or out of the store, via a heat exchanger

**3.21
load**

heat output of the store during discharge. The load is defined as the product of the mass, specific thermal capacity and temperature increase of the water as it passes the solar hot water system.

**3.22
mantle heat exchanger**

heat exchanger mounted to the store in such a way that it forms a layer between the fluid in the store tank and ambient

**3.23
measured store heat capacity**

measured difference in energy of the store between two steady states on different temperature levels, divided by the temperature difference between these two steady states

3.24**measured energy, $Q_{x,m}$**

time integral of the measured power over one or more test sequences, excluding time periods used for conditioning at the beginning of the test sequences

3.25**measured power, $P_{x,m}$**

power calculated from measured volume flow rate as well as measured inlet and outlet temperatures

3.26**mixed**

state when the local store temperature is not a function of the vertical store height

3.27**model parameter**

parameter used for quantification of a physical effect, if this physical effect is implemented in a mathematical model in a way which is not analogous to its appearance in reality, or if several physical effects are lumped in the model (e.g. a stratification number)

3.28**nominal flow rate, \dot{V}_n**

nominal volume of the entire store divided by 1 h

3.29**nominal heating power, P_n**

nominal volume of the entire store multiplied by 10 W/l

3.30**nominal volume, V_n**

fluid volume of the store as specified by the manufacturer

3.31**operating heat loss capacity rate, $(UA)_{op,s,a}$**

heat loss capacity rate of the store during charge or discharge

3.32**predicted energy, Q_{xp}**

time integral of the predicted power over one or more test sequences, excluding time periods used for conditioning at the beginning of the test sequences

3.33**predicted power, P_{xp}**

power calculated from measured volume flow rate, as well as measured inlet temperature and calculated outlet temperature

NOTE The outlet temperature is predicted by numerical simulation.

3.34**reduced charge/discharge volume**

integral of a charge/discharge flow rate divided by the store volume

3.35**stand-by**

state of operation in which no energy is deliberately transferred to or removed from the store

EN 12977-3:2008 (E)**3.36****stand-by heat loss capacity rate, $(UA)_{sb,s,a}$**

heat loss capacity rate of the store during stand-by

3.37**steady state**

state of operation at which at charge or discharge during 0,5 “reduced charge/discharge volume” (see 3.34) the standard deviation of the temperature difference between store inlet and store outlet temperatures of the charging/discharging circuit is lower than 0,1 K

NOTE In cases of an isothermal charged store, constant temperature differences between the inlet and outlet temperatures of the discharge circuit may occur during the discharge of the first store volume before the outlet temperature drops rapidly. This state is not considered as steady state.

3.38**store temperature**

temperature of the store medium

3.39**stratified**

state when thermal stratification is present inside the store

3.40**stratified charging**

increase of thermal stratification in the store during charging

3.41**stratifier**

device that enables stratified charging of the store. Commonly used stratifiers are e.g. convection chimneys or pipes with radial holes

iTeh STANDARD PREVIEW
(standards.iteh.ai)

[SIST EN 12977-3:2008](https://standards.iteh.ai/catalog/standards/sist/f4537b03-d685-4a1c-bf0f-bd3da44f3303/sist-en-12977-3-2008)

<https://standards.iteh.ai/catalog/standards/sist/f4537b03-d685-4a1c-bf0f-bd3da44f3303/sist-en-12977-3-2008>

3.42**theoretical store heat capacity**

sum over all thermal capacities $m_i \times c_{p,i}$ of the entire store (fluid, tank material, heat exchangers) having part of the heat store process

3.43**thermal stratification**

state when the local store temperature is a function of the vertical store height, with the temperature decreasing from top to bottom

3.44**transfer time, $t_{x,f}$**

time period during which energy is transferred through the connections for charge ($x = C$) or discharge ($x = D$). The transfer time is calculated over one or more test sequences, excluding time periods used for conditioning at the beginning of the test sequences

4 Symbols and abbreviations

C_s thermal capacity of the entire store, in J/K

c_p specific heat capacity, in J/(kg K)

P_n nominal heating power, in W

$P_{x,m}$ measured power transferred through the charge ($x = C$) or discharge ($x = D$) circuit, in W

$P_{x,p}$	predicted power transferred through the charge ($x = C$) or discharge ($x = D$) circuit, in W
$Q_{x,m}$	measured energy transferred through the charge ($x = C$) or discharge ($x = D$) circuit, in J
$Q_{x,p}$	predicted energy transferred through the charge ($x = C$) or discharge ($x = D$) circuit, in J
t_{st}	time required to achieve a steady state, in s
$t_{x,f}$	transfer time for charging ($x = C$) or discharging ($x = D$), in s
ϑ_a	ambient temperature, in °C
ϑ_s	store temperature, in °C
$\vartheta_{x,i}$	inlet temperature of the charge ($x = C$) or discharge ($x = D$) circuit, in °C
$\tilde{\vartheta}_{x,i}$	constant inlet temperature of the charge ($x = C$) or discharge ($x = D$) circuit, in °C
$\vartheta_{x,o}$	outlet temperature of the charge ($x = C$) or discharge ($x = D$) circuit, in °C
$(UA)_{hx,s}$	heat transfer capacity rate between heat exchanger and store, in W/K
$(UA)_{s,a}$	heat loss capacity rate of the store, in W/K
$(UA)_{op,s,a}$	operating heat loss capacity rate of the store, in W/K
$(UA)_{sb,s,a}$	stand-by heat loss capacity rate of the store, in W/K
V_n	nominal volume of the store, in l
\dot{V}_n	nominal flow rate, in l/h
\tilde{V}_x	constant flow rate of the charge ($x = C$) or discharge ($x = D$) circuit, in l/h
$\Delta\vartheta_m$	mean logarithmic temperature difference, in K
$\varepsilon_{x,P}$	relative error in mean power transferred during charge ($x = C$) or discharge ($x = D$), in %
$\varepsilon_{x,Q}$	relative error in energy transferred during charge ($x = C$) or discharge ($x = D$), in %
ρ	density, in kg/m ³

5 Store classification

Hot water stores are classified by distinction between different charge and discharge modes. Five groups are defined as shown in Table 1.

Table 1 — Classification of the stores

Group	Charge mode	Discharge mode
1	direct	direct
2	indirect	direct
3	direct	indirect
4	indirect	indirect
5	stores that cannot be assigned to groups 1 to 4	

NOTE 1 All stores may have one or more additional electrical heating elements.

6 Laboratory store testing

6.1 Requirements on the testing stand

6.1.1 General

The hot water store shall be tested separately from the whole solar system on a store testing stand.

The testing stand configuration shall be determined by the classification of hot water stores as described in Clause 5.

An example of a representative hydraulic testing stand configuration is shown in Figure 1 and Figure 2.

The circuits are intended to simulate the charge and discharge loop of the solar system and to provide fluid flow with a constant or well controlled temperature. The full test stand consists of one charge and one discharge circuit.

NOTE 1 If the store consists of more than one charge or discharge devices (e.g. two heat exchangers), then these are tested separately.

The testing stand shall be located in an air-conditioned room where the room temperature of 20 °C should not vary more than ± 2 K during the test.

Both circuits shall fulfil the following requirements:

- the flow rate shall be adjustable and stable within ± 5 %;
- the working temperature range shall be between 10 °C and 90 °C;

NOTE 2 A typical heating power of the charge circuit is in the range of 15 kW.

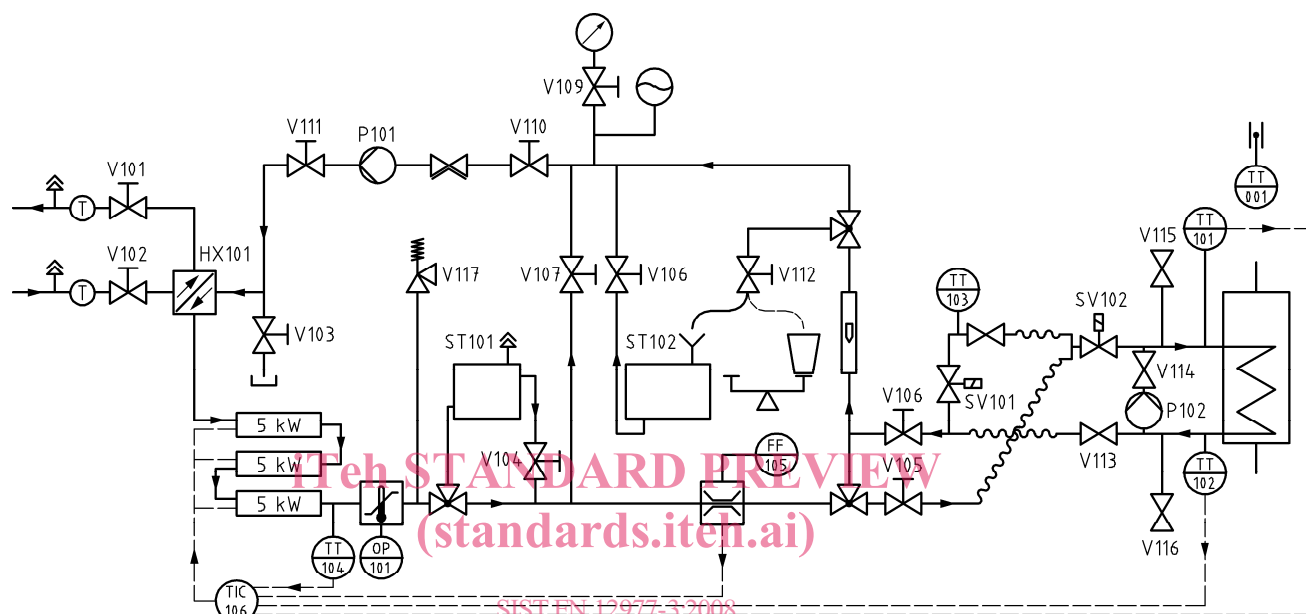
- the minimum cooling power in the discharge circuit shall be at least 25 kW at a fluid temperature of 20 °C;

NOTE 3 A typical heating power of the discharge circuit is in the range of 25 kW.

NOTE 4 If mains water at a constant pressure and a constant temperature below 20 °C is available, it is recommended to design the discharge circuit in a way, that it can be operated as closed loop or as open loop using mains water to discharge the store.

- the minimum heating up rate of the charge circuit with disconnected store shall be 3 K/min;
- the minimum available electrical heating power for electrical auxiliary heaters shall be 6,0 kW.

NOTE 5 The electrical power of the pump (P102) should be chosen in such a way that the temperature increase induced by the pump (P102) is either less than 0,6 K/h when the charge circuit is "short-circuited" and operated at room temperature ("short-circuited" means that no storage device is connected and SV102, V113, V115 and V116 are closed, see Figure 1) or an additional cooling device should be integrated in the circuit.



<https://standards.iteh.ai/catalog/standards/sist/f4537b03-d685-4a1c-bf0f-bd3da44f3303/sist-en-12977-3-2008>

Key

FF	Flow meter	SV	Solenoid valve
HX	Heat exchanger	TT	Temperature sensor
OP	Overheating protection	TIC	Temperature indicator and controller
P	Pump	V	Valve
ST	Store (belonging to test facility)		

Figure 1 — Charge circuit of the store testing stand

The heating medium water in the charge circuit (see Figure 1) is pumped through the cooler (HX101) and the temperature controlled heaters (TIC106) by the pump (P101). A buffer tank (ST101) is used to balance the remaining control deviations. By means of the bypass (V107) the flow through the store can be controlled, it also ensures a continuously high flow through the heating section and therefore good control characteristics. With the solenoid valve (SV101) the heating medium can bypass the store to prepare a sudden increase of the inlet temperature into the store.

The temperature sensors are placed near the inlet (TT101) and outlet (TT102) connections of the store; the connection to the store is established through insulated flexible pipes.

The charge circuit can be operated closed, under pressure (design pressure 2,5 bar, membrane pressure expansion tank and pressure relief valve (V109)) as well as open (valve (V108) open) with the tank (ST102)