



Pressure regulators and pressure regulators with flow-metering devices for medical gas systems

TECHNICAL CORRIGENDUM 1

Régulateurs de pression avec ou sans débitmètre pour systèmes de gaz médicaux

RECTIFICATIF TECHNIQUE 1

Technical corrigendum 1 to International Standard ISO 10524:1995 was prepared by Technical Committee ISO/TC 121, *Anaesthetic and respiratory equipment*, Subcommittee SC 6, *Medical gas systems*.

iTeh STANDARD PREVIEW (standards.iteh.ai)

Page 3

Subclause 5.1

<https://standards.iteh.ai/catalog/standards/sist/3be91762-6a98-4cc5-aaa7-430bced26380/iso-10524-1995-cor-1-1996>

In the second paragraph, fourth line, replace "...mechanical thermal action..." with "...mechanical and thermal action..."

Page 4

Replace the existing figure 1 with the new figure 1, in which:

- the indication of item 11 Relief valve is corrected;
- the scale of the gauges is corrected from 360° to 270°;
- in c), the marking of the flow-gauge is corrected from kPa to l/min;
- the correction between the diaphragm and the pressure regulator valve is added.

Page 5

Table 1

In column 5, last row, replace "system" with "systems".

Page 6

Subclauses 7.5.1 and 7.5.2

Replace "11.8.2 and 11.8.3" with "11.8.1 and 11.8.2".

Page 7

Subclause 7.10

Replace "11.5.1" with "11.5".

Subclause 9.1.2

In the second line, replace "...within + 10 %..." with "within \pm 10 %..."

Subclause 9.1.4

Delete the subclause title and replace with "Mechanical resistance of flowmeter".

Page 8

Subclause 9.2.1

Replace "12.2" with "12.1.3".

iTeh STANDARD PREVIEW
(standards.iteh.ai)

Page 9

Subclause 11.3.3

Replace "... - 23 °C and +101,3 kPa" with "... - 23 °C and +101,3 kPa".

[ISO 10524:1995/Cor 1:1996](https://standards.iteh.ai/standards/sist/3be91762-6a98-4cc5-aaa7-a750Bed2f2b/iso-10524-1995-cor-1-1996)

Page 10

Subclause 11.5.1

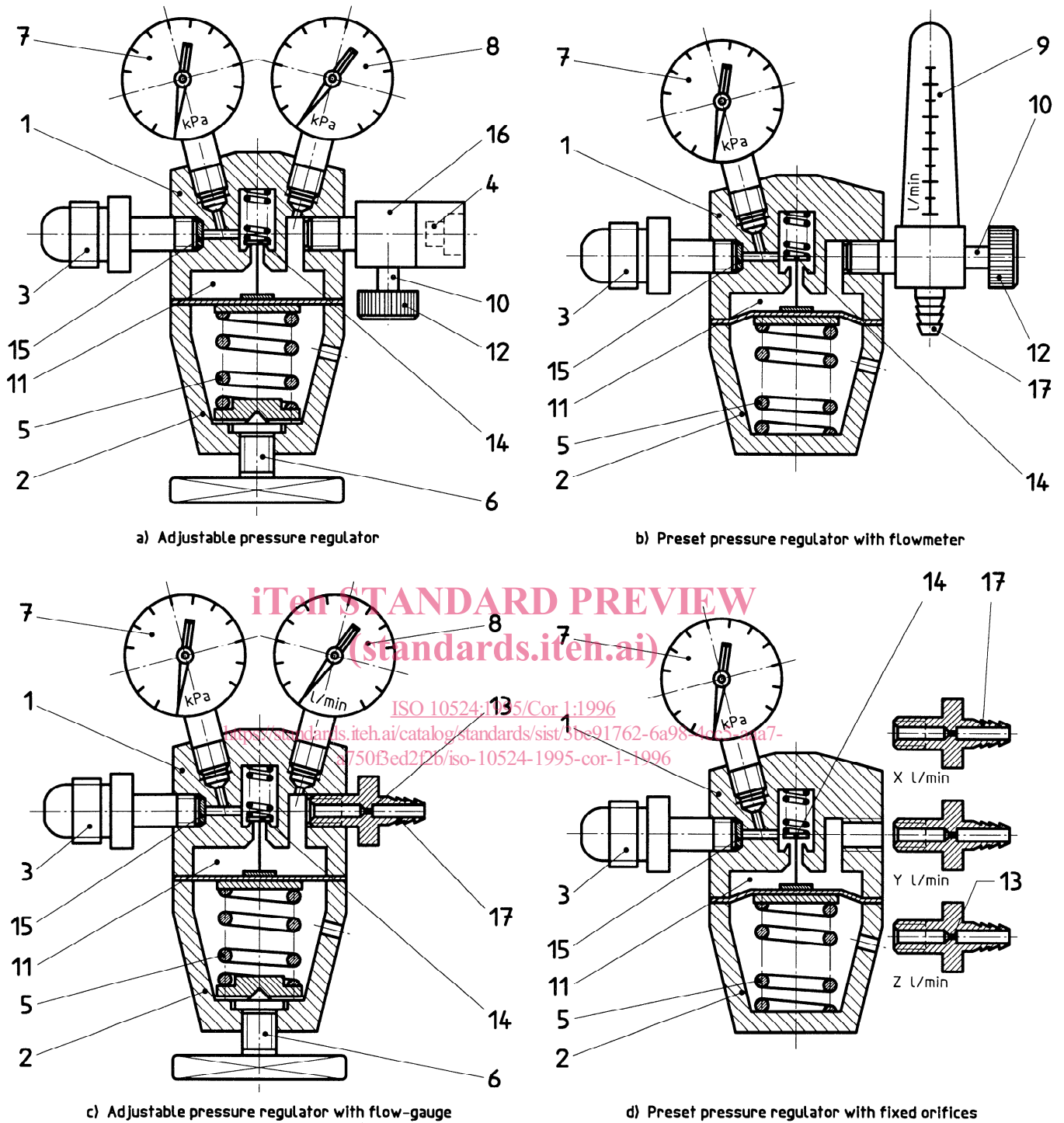
In the second line, replace "figure 3" with "figure 2".

Page 11

Replace existing figure 4 with the new figure 4, in which the relative positions of the two lower curves have been corrected and line 5 shortened.

Page 12

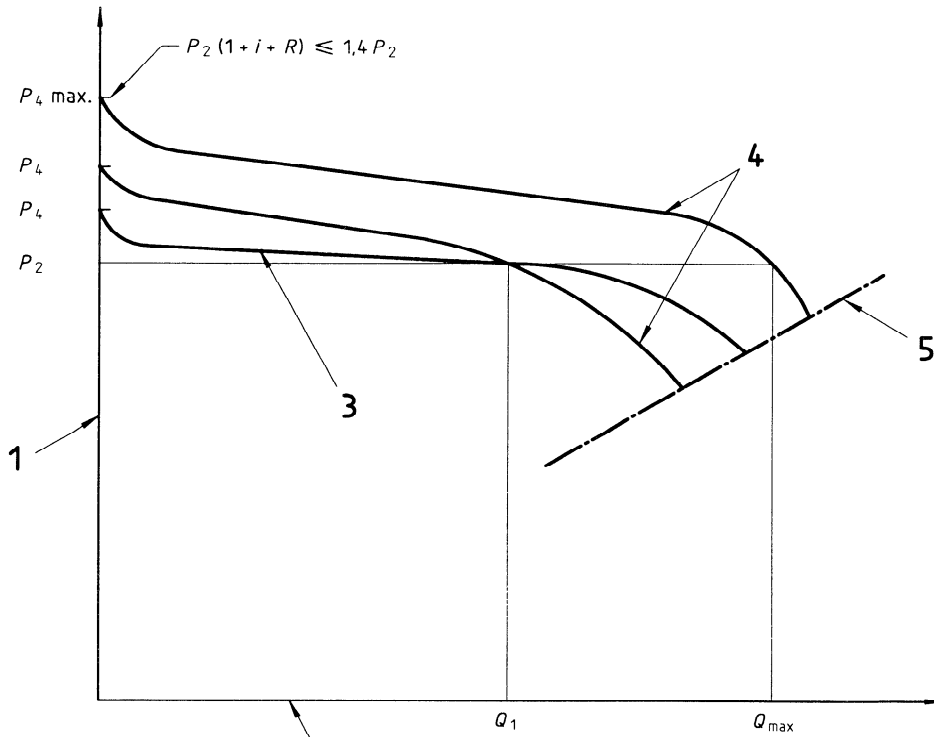
Replace existing figure 5 with the new figure 5, in which the labelling of the ordinate axis has been corrected and line 5 shortened.



Key

- | | | |
|------------------------------|----------------------------|-----------------------------|
| 1 Body | 7 HP gauge | 13 Fixed orifice |
| 2 Cover | 8 LP gauge (or flow-gauge) | 14 Pressure regulator valve |
| 3 Inlet connector | 9 Flowmeter | 15 Inlet filter |
| 4 Outlet connector | 10 Valve spindle | 16 Outlet valve |
| 5 Pressure regulating spring | 11 Relief valve | 17 Hose nipple |
| 6 Adjusting device | 12 Control knob | |

Figure 1 — Typical examples of pressure regulators

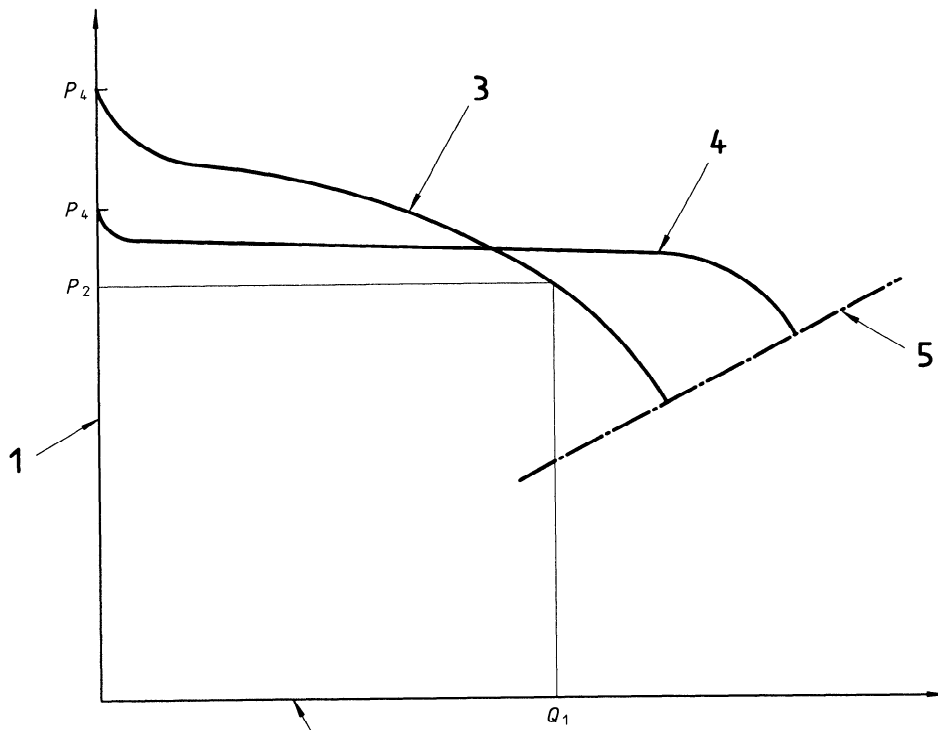


iTeh STANDARD PREVIEW
(standards.iteh.ai)

Key

- | | | | | | |
|---|-----------------|---|----------------------|---|--------------------|
| 1 | Outlet pressure | 3 | Inlet pressure P_1 | 5 | Outlet restriction |
| 2 | Flow | 4 | Inlet pressure P_3 | | |

Figure 4 — Flow characteristics for adjustable pressure regulator



iTeh STANDARD PREVIEW

(standards.iteh.ai)

Key

- | | | | | | |
|---|-----------------|---|----------------------|---|--------------------|
| 1 | Outlet pressure | 3 | Inlet pressure P_3 | 5 | Outlet restriction |
| 2 | Flow | 4 | Inlet pressure P_1 | | |

ISO 10524:1995/Cor 1:1996

Figure 5 — Flow characteristics for preset pressure regulator

<https://standards.iteh.ai/catalog/standards/iso/3be917c2-6c98-4de5-80e7-a750Bed2f2b/iso-10524-1995-cor-1-1996>

iTeh STANDARD PREVIEW
This page intentionally left blank
(standards.iteh.ai)

[ISO 10524:1995/Cor 1:1996](https://standards.iteh.ai/catalog/standards/sist/3be91762-6a98-4cc5-aaa7-a750Bed2f2b/iso-10524-1995-cor-1-1996)

<https://standards.iteh.ai/catalog/standards/sist/3be91762-6a98-4cc5-aaa7-a750Bed2f2b/iso-10524-1995-cor-1-1996>

iTeh STANDARD PREVIEW
This page intentionally left blank
(standards.iteh.ai)

[ISO 10524:1995/Cor 1:1996](#)

<https://standards.iteh.ai/catalog/standards/sist/3be91762-6a98-4cc5-aaa7-a750Bed2f2b/iso-10524-1995-cor-1-1996>

iTeh STANDARD PREVIEW
This page intentionally left blank
(standards.iteh.ai)

[ISO 10524:1995/Cor 1:1996](https://standards.iteh.ai/catalog/standards/sist/3be91762-6a98-4cc5-aaa7-a7503ed2f2b/iso-10524-1995-cor-1-1996)

<https://standards.iteh.ai/catalog/standards/sist/3be91762-6a98-4cc5-aaa7-a7503ed2f2b/iso-10524-1995-cor-1-1996>