

---

---

**Cinematography — Maximum permissible  
area for subtitle on 35 mm and 16 mm  
motion-picture release prints — Position  
and dimensions**

*Cinématographie — Surface maximale réservée aux sous-titres, sur les  
copies d'exploitation de 35 mm et de 16 mm — Position et dimensions*

iTeh STANDARD PREVIEW  
(standards.iteh.ai)

[ISO 8567:2002](#)

<https://standards.iteh.ai/catalog/standards/sist/bc274117-0753-4c06-a39d-329da8f0fe2/iso-8567-2002>



**PDF disclaimer**

This PDF file may contain embedded typefaces. In accordance with Adobe's licensing policy, this file may be printed or viewed but shall not be edited unless the typefaces which are embedded are licensed to and installed on the computer performing the editing. In downloading this file, parties accept therein the responsibility of not infringing Adobe's licensing policy. The ISO Central Secretariat accepts no liability in this area.

Adobe is a trademark of Adobe Systems Incorporated.

Details of the software products used to create this PDF file can be found in the General Info relative to the file; the PDF-creation parameters were optimized for printing. Every care has been taken to ensure that the file is suitable for use by ISO member bodies. In the unlikely event that a problem relating to it is found, please inform the Central Secretariat at the address given below.

**iTeh STANDARD PREVIEW**  
**(standards.iteh.ai)**

[ISO 8567:2002](#)

<https://standards.iteh.ai/catalog/standards/sist/bc274117-0753-4c06-a39d-329da8f60fe2/iso-8567-2002>

© ISO 2002

All rights reserved. Unless otherwise specified, no part of this publication may be reproduced or utilized in any form or by any means, electronic or mechanical, including photocopying and microfilm, without permission in writing from either ISO at the address below or ISO's member body in the country of the requester.

ISO copyright office  
Case postale 56 • CH-1211 Geneva 20  
Tel. + 41 22 749 01 11  
Fax + 41 22 749 09 47  
E-mail [copyright@iso.ch](mailto:copyright@iso.ch)  
Web [www.iso.ch](http://www.iso.ch)

Printed in Switzerland

## Foreword

ISO (the International Organization for Standardization) is a worldwide federation of national standards bodies (ISO member bodies). The work of preparing International Standards is normally carried out through ISO technical committees. Each member body interested in a subject for which a technical committee has been established has the right to be represented on that committee. International organizations, governmental and non-governmental, in liaison with ISO, also take part in the work. ISO collaborates closely with the International Electrotechnical Commission (IEC) on all matters of electrotechnical standardization.

International Standards are drafted in accordance with the rules given in the ISO/IEC Directives, Part 3.

The main task of technical committees is to prepare International Standards. Draft International Standards adopted by the technical committees are circulated to the member bodies for voting. Publication as an International Standard requires approval by at least 75 % of the member bodies casting a vote.

Attention is drawn to the possibility that some of the elements of this International Standard may be the subject of patent rights. ISO shall not be held responsible for identifying any or all such patent rights.

ISO 8567 was prepared by Technical Committee ISO/TC 36, *Cinematography*.

This second edition cancels and replaces the first edition (ISO 8567:1986), which has been technically revised.

ITC STANDARD PREVIEW  
(standards.iteh.ai)

[ISO 8567:2002](https://standards.iteh.ai/catalog/standards/sist/bc274117-0753-4c06-a39d-329da8f60fe2/iso-8567-2002)

<https://standards.iteh.ai/catalog/standards/sist/bc274117-0753-4c06-a39d-329da8f60fe2/iso-8567-2002>

**iTeh STANDARD PREVIEW**  
**(standards.iteh.ai)**

ISO 8567:2002

<https://standards.iteh.ai/catalog/standards/sist/bc274117-0753-4c06-a39d-329da8f60fe2/iso-8567-2002>

# Cinematography — Maximum permissible area for subtitle on 35 mm and 16 mm motion-picture release prints — Position and dimensions

## 1 Scope

This International Standard specifies the position and dimensions of the maximum area permitted for subtitles on 35 mm and 16 mm motion-picture release prints for normal projection as specified in ISO 359 and ISO 2907.

This International Standard does not replace ISO 1223:—<sup>1)</sup>, *Cinematography — Picture areas for motion-picture films for television — Position and dimensions*, which specifies the safe areas for prints intended for transmission by television.

## 2 Normative references

The following normative documents contain provisions which, through reference in this text, constitute provisions of this International Standard. For dated references, subsequent amendments to, or revisions of, any of these publications do not apply. However, parties to agreements based on this International Standard are encouraged to investigate the possibility of applying the most recent editions of the normative documents indicated below. For undated references, the latest edition of the normative document referred to applies. Members of ISO and IEC maintain registers of currently valid International Standards.

ISO 359:1983, *Cinematography — Projectable image area on 16 mm motion-picture prints — Dimensions and location*

ISO 2907:—<sup>2)</sup>, *Cinematography — Maximum projectable image area on 35 mm motion-picture film — Position and dimensions*

## 3 Position and dimensions

**3.1** The position and dimensions of the maximum area permitted for subtitles shall be as shown in Figures 1 and 2 and specified in Table 1, respectively.

**3.2** The centre-lines of the maximum area permitted for subtitles shall be coincident with the centre-lines of the intended image area on the motion-picture release print.

---

1) To be published. (Revision of ISO 1223:1993)

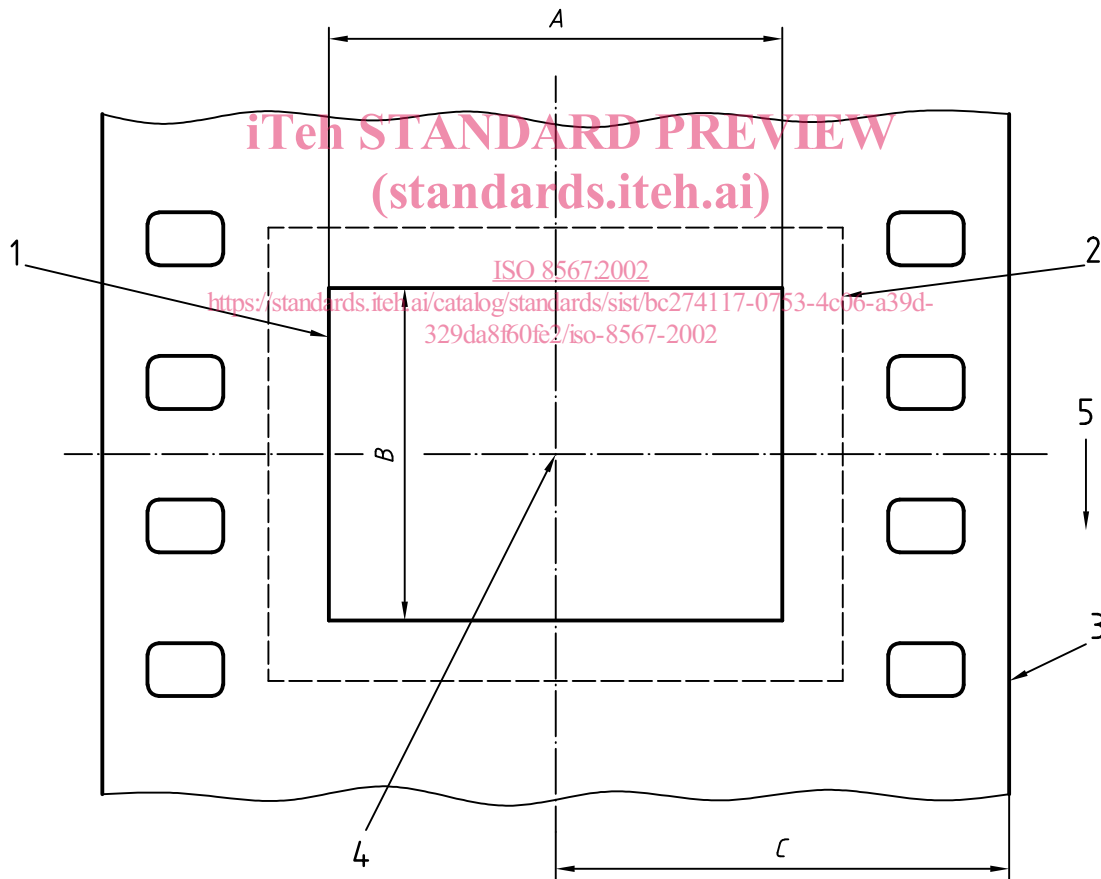
2) To be published. (Revision of ISO 2907:1984)

Table 1 — Dimensions of maximum area permitted for subtitles

Type of release print	Intended projection aspect ratio	Dimensions <sup>a</sup>					
		A max.		B max.		C ref.	
		mm	in	mm	in	mm	in
35 mm non-anamorphic	from 1,37:1 to 1,66:1	18,1	0,71	12,0	0,48	18,75	0,738
	from 1,66:1 to 1,85:1	18,1	0,71	10,0	0,40	18,75	0,738
35 mm anamorphic	2,35:1	18,1	0,71	14,6	0,548	18,75	0,738
16 mm	1,33:1	8,4	0,33	5,6	0,22	7,98	0,314

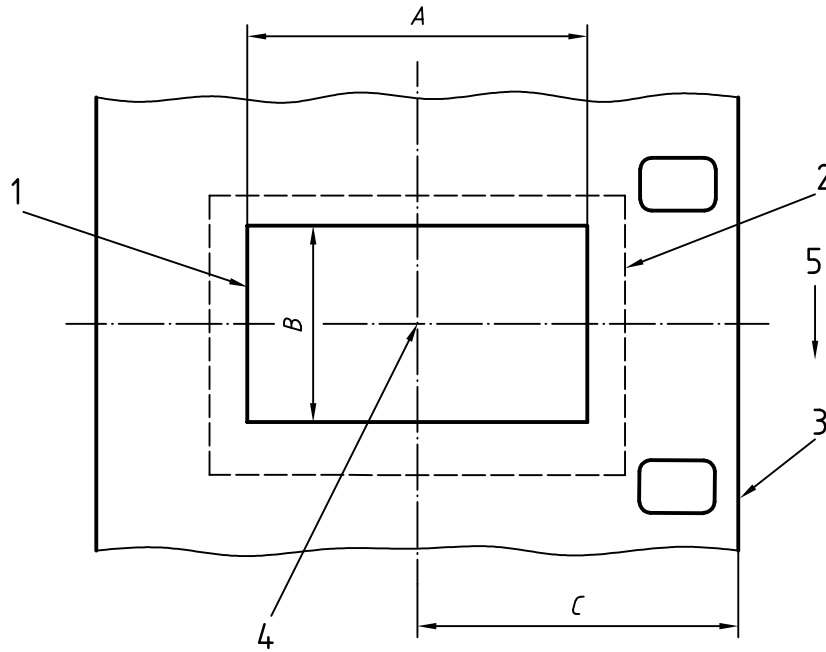
NOTE 1 The specified area is not intended to restrict the use of rolling or continuously moving subtitles.  
 NOTE 2 The producer is cautioned that, even though a film may have been intended for an aspect ratio less than 1,85:1, it is common practice in some countries to project films at an aspect ratio up to 1,85:1.

<sup>a</sup> See Figures 1 and 2.



- Key**
- 1 Maximum permissible area for subtitle
  - 2 Projectable image area
  - 3 Reference edge
  - 4 Centre of intended image
  - 5 Direction of film travel

Figure 1 — Position of maximum area permitted for subtitle on 35 mm release print

**Key**

- 1 Maximum permissible area for subtitle
- 2 Projectable image area
- 3 Reference edge
- 4 Centre of intended image
- 5 Direction of film travel

iTech STANDARD PREVIEW  
(standards.iteh.ai)  
ISO 8567:2002  
<https://standards.iteh.ai/catalog/standards/sist/bc274117-0753-4c06-a39d-329da8f60fe2/iso-8567-2002>

**Figure 2 — Position of maximum area permitted for subtitle on 16 mm release print**

**iTeh STANDARD PREVIEW**  
**(standards.iteh.ai)**

ISO 8567:2002

<https://standards.iteh.ai/catalog/standards/sist/bc274117-0753-4c06-a39d-329da8f60fe2/iso-8567-2002>

---

---

**ICS 37.060.20**

Price based on 3 pages