
**Tools for pressing — Gas springs —
Part 2:
Specification of accessories**

Outils de presse — Ressorts à gaz —

Partie 2: Spécifications des accessoires

iTeh STANDARD PREVIEW
(standards.iteh.ai)

ISO 11901-2:2004

<https://standards.iteh.ai/catalog/standards/sist/9398dfd6-83b2-4e03-b657-0df4fa173a51/iso-11901-2-2004>



PDF disclaimer

This PDF file may contain embedded typefaces. In accordance with Adobe's licensing policy, this file may be printed or viewed but shall not be edited unless the typefaces which are embedded are licensed to and installed on the computer performing the editing. In downloading this file, parties accept therein the responsibility of not infringing Adobe's licensing policy. The ISO Central Secretariat accepts no liability in this area.

Adobe is a trademark of Adobe Systems Incorporated.

Details of the software products used to create this PDF file can be found in the General Info relative to the file; the PDF-creation parameters were optimized for printing. Every care has been taken to ensure that the file is suitable for use by ISO member bodies. In the unlikely event that a problem relating to it is found, please inform the Central Secretariat at the address given below.

iTeh STANDARD PREVIEW
(standards.iteh.ai)

ISO 11901-2:2004

<https://standards.iteh.ai/catalog/standards/sist/9398dfd6-83b2-4e03-b657-0df4fa173a51/iso-11901-2-2004>

© ISO 2004

All rights reserved. Unless otherwise specified, no part of this publication may be reproduced or utilized in any form or by any means, electronic or mechanical, including photocopying and microfilm, without permission in writing from either ISO at the address below or ISO's member body in the country of the requester.

ISO copyright office
Case postale 56 • CH-1211 Geneva 20
Tel. + 41 22 749 01 11
Fax + 41 22 749 09 47
E-mail copyright@iso.org
Web www.iso.org

Published in Switzerland

Contents

	Page
1 Scope	1
2 Normative references	1
3 Dimensions	2
3.1 Type A1 — Mounting base plates with two holes to clamp the gas spring	2
3.2 Type A2 — Mounting base plates with four holes to clamp the gas spring	3
3.3 Type B — Two part mounting clamps	4
3.4 Type C — Flange mounts	5
3.5 Type D — Front end supports	8
3.6 Type E — Rectangular flange mounts	9
4 Material	9
5 Designation	10

iTeh STANDARD PREVIEW (standards.iteh.ai)

[ISO 11901-2:2004](https://standards.iteh.ai/catalog/standards/sist/9398dfd6-83b2-4e03-b657-0df4fa173a51/iso-11901-2-2004)

<https://standards.iteh.ai/catalog/standards/sist/9398dfd6-83b2-4e03-b657-0df4fa173a51/iso-11901-2-2004>

Foreword

ISO (the International Organization for Standardization) is a worldwide federation of national standards bodies (ISO member bodies). The work of preparing International Standards is normally carried out through ISO technical committees. Each member body interested in a subject for which a technical committee has been established has the right to be represented on that committee. International organizations, governmental and non-governmental, in liaison with ISO, also take part in the work. ISO collaborates closely with the International Electrotechnical Commission (IEC) on all matters of electrotechnical standardization.

International Standards are drafted in accordance with the rules given in the ISO/IEC Directives, Part 2.

The main task of technical committees is to prepare International Standards. Draft International Standards adopted by the technical committees are circulated to the member bodies for voting. Publication as an International Standard requires approval by at least 75 % of the member bodies casting a vote.

Attention is drawn to the possibility that some of the elements of this document may be the subject of patent rights. ISO shall not be held responsible for identifying any or all such patent rights.

ISO 11901-2 was prepared by Technical Committee ISO/TC 29, *Small tools*, Subcommittee SC 8, *Tools for pressing and moulding*.

This second edition cancels and replaces the first edition (ISO 11901-2:1995), which has been technically revised.

ISO 11901 consists of the following parts, under the general title *Tools for pressing — Gas springs*:

- *Part 1: General specifications* [ISO 11901-2:2004](https://standards.iteh.ai/catalog/standards/sist/9398dfd6-83b2-4e03-b657-0d4fa173a51/iso-11901-2-2004)
- *Part 2: Specification of accessories* <https://standards.iteh.ai/catalog/standards/sist/9398dfd6-83b2-4e03-b657-0d4fa173a51/iso-11901-2-2004>

iTeh STANDARD PREVIEW
(standards.iteh.ai)

Introduction

The attention of the user of ISO 11901 is drawn to the fact that gas springs will have to conform to the user's national regulations.

iTeh STANDARD PREVIEW (standards.iteh.ai)

[ISO 11901-2:2004](https://standards.iteh.ai/catalog/standards/sist/9398dfd6-83b2-4e03-b657-0df4fa173a51/iso-11901-2-2004)

<https://standards.iteh.ai/catalog/standards/sist/9398dfd6-83b2-4e03-b657-0df4fa173a51/iso-11901-2-2004>

iTeh STANDARD PREVIEW
(standards.iteh.ai)

ISO 11901-2:2004

<https://standards.iteh.ai/catalog/standards/sist/9398dfd6-83b2-4e03-b657-0df4fa173a51/iso-11901-2-2004>

Tools for pressing — Gas springs —

Part 2: Specification of accessories

1 Scope

This part of ISO 11901 specifies the dimensions, in millimetres, of mounting base plates, of two-part mounting clamps, of flange mounts and of front end supports intended for use in press tools together with gas springs in accordance with ISO 11901-1.

It also gives information concerning materials and specifies the designation of the mounting accessories in accordance with this part of ISO 11901.

2 Normative references

The following referenced documents are indispensable for the application of this document. For dated references, only the edition cited applies. For undated references, the latest edition of the referenced document (including any amendments) applies.

ISO 630, *Structural steels — Plates, wide flats, bars, sections and profiles*

[ISO 11901-2:2004](http://standards.iteh.ai/catalog/standards/sist/091816-2004-403/iso-11901-2:2004)

ISO 2768-1, *General tolerances — Part 1: Tolerances for linear and angular dimensions without individual tolerance indications*

<http://standards.iteh.ai/catalog/standards/sist/091816-2004-403/iso-11901-2:2004>

ISO 11901-1, *Tools for pressing — Gas springs — Part 1: General specifications*

3 Dimensions

3.1 Type A1 — Mounting base plates with two holes to clamp the gas spring

See Figure 1 and Table 1.

General tolerance: ISO 2768-m

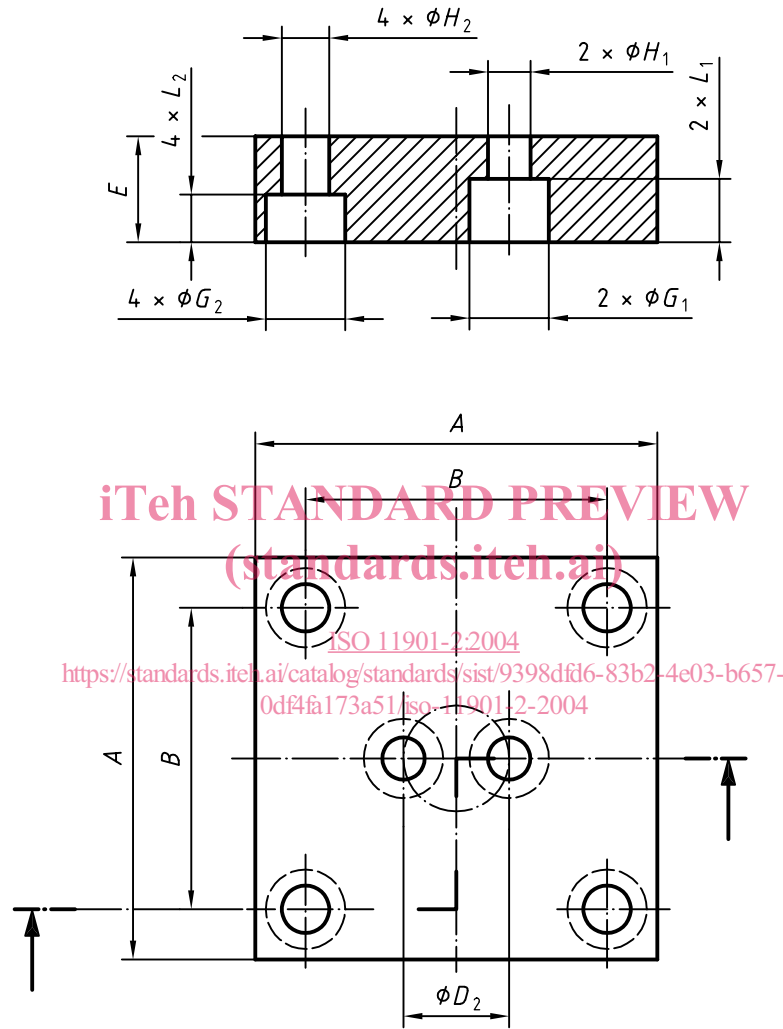


Figure 1 — Mounting base plates — Type A1

Table 1 — Dimensions of mounting base plates — Type A1

Mount for gas spring type	A	B	D ₂	E 0 -0,1	G ₁	G ₂	H ₁	H ₂	L ₁	L ₂
5 000	70	50	20	20	15	15	9	9	14	12
7 500	75	56,5	20	20	15	15	9	9	14	12

3.2 Type A2 — Mounting base plates with four holes to clamp the gas spring

See Figure 2 and Table 2.

General tolerance: ISO 2768-m

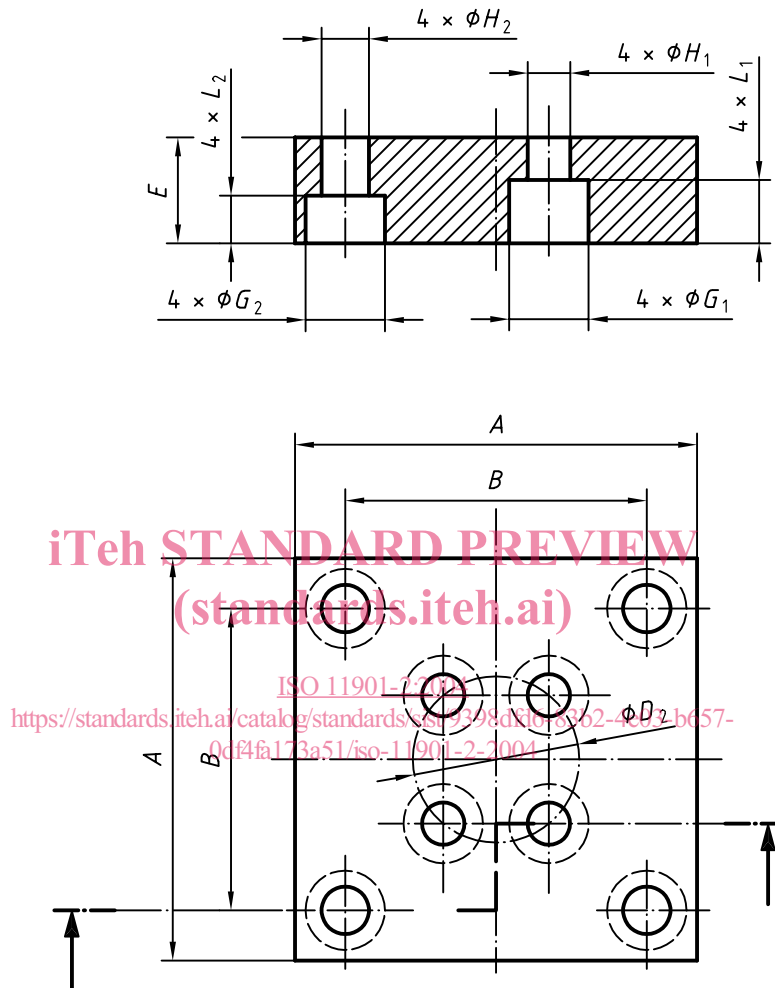


Figure 2 — Mounting base plates — Type A2

Table 2 — Dimensions of mounting base plates — Type A2

Mount for gas spring type	A	B	D ₂	E $\begin{smallmatrix} 0 \\ -0,1 \end{smallmatrix}$	G ₁	G ₂	H ₁	H ₂	L ₁	L ₂
15 000	100	73,5	40	20	15	18	9	11	14	12
30 000	120	92	60	20	15	20	9	13,5	14	13
50 000	140	109,5	80	20	18	20	11	13,5	15	13
75 000	190	138	100	25	18	26	11	17,5	15	17
100 000	210	170	120	25	20	26	13,5	17,5	13	17