



Designation: D 6919 – 03

# Standard Test Method for Determination of Dissolved Alkali and Alkaline Earth Cations and Ammonium in Water and Wastewater by Ion Chromatography<sup>1</sup>

This standard is issued under the fixed designation D 6919; the number immediately following the designation indicates the year of original adoption or, in the case of revision, the year of last revision. A number in parentheses indicates the year of last reapproval. A superscript epsilon ( $\epsilon$ ) indicates an editorial change since the last revision or reapproval.

## 1. Scope

1.1 This test method is valid for the simultaneous determination of the inorganic alkali and alkaline earth cations, lithium, sodium, potassium, magnesium, and calcium, as well as the ammonium cation in reagent water, drinking water, and wastewaters by suppressed and nonsuppressed ion chromatography.

1.2 The anticipated range of the method is 0.05–200 mg/L. The specific concentration ranges tested for this method for each cation were as follows (measured in mg/L):

Lithium	0.4–10.0
Sodium	4.0–40.0
Ammonium	0.4–10.0
Potassium	1.2–20.0
Magnesium	2.4–20.0
Calcium	4.0–40.0

1.2.1 The upper limits may be extended by appropriate dilution or by the use of a smaller injection volume. In some cases, using a larger injection loop may extend the lower limits.

1.3 It is the user's responsibility to ensure the validity of these test methods for waters of untested matrices.

1.4 *This standard does not purport to address all of the safety concerns, if any, associated with its use. It is the responsibility of the user of this standard to establish appropriate safety and health practices and determine the applicability of regulatory limitations prior to use.* For hazards statements specific to this test method, see 8.3.

## 2. Referenced Documents

### 2.1 ASTM Standards:

- D 1129 Terminology Relating to Water<sup>2</sup>
- D 1193 Specifications for Reagent Water<sup>2</sup>
- D 2777 Practice for Determination of Precision and Bias of Applicable Methods of Committee D19 on Water<sup>2</sup>
- D 3370 Practices for Sampling Water<sup>2</sup>
- D 3856 Guide for Good Laboratory Practices in Laboratories Engaged in Sampling and Analysis of Water<sup>2</sup>

<sup>1</sup> This test method is under the jurisdiction of ASTM Committee D19 on Water and is the direct responsibility of Subcommittee D19.05 on Inorganic Constituents in Water.

Current edition approved Aug. 10, 2003. Published September 2003.

<sup>2</sup> *Annual Book of ASTM Standards*, Vol 11.01.

- D 4210 Practice for Interlaboratory Quality Control Procedures and Discussion on Reporting Low-Level Data<sup>2</sup>
- D 5810 Guide for Spiking into Aqueous Samples<sup>2</sup>
- D 5847 Practice for the Writing of Quality Control Specifications for Standard Test Methods for Water Analysis<sup>2</sup>
- D 5905 Practice for the Preparation of Substitute Wastewater<sup>2</sup>

## 3. Terminology

3.1 *Definitions*—For definitions of terms used in this test method, refer to Terminology D 1129.

## 4. Summary of Test Method

4.1 Inorganic cations and the ammonium cation, hereafter referred to as ammonium, are determined by ion chromatography in water and wastewater samples from a fixed sample volume, typically 10–50  $\mu$ L. The cationic analytes are separated using a cation-exchange material, which is packed into guard and analytical columns. A dilute acid solution is typically used as the eluent.

4.1.1 The separated cations are detected by using conductivity detection. To achieve sensitive conductivity detection, it is essential that the background signal arising from the eluent have low baseline noise. One means to achieve low background noise is to combine the conductivity detector with a suppressor device that will reduce the conductance of the eluent, hence background noise, and also transform the separated cations into their more conductive corresponding bases.<sup>3</sup>

4.1.2 Detection can also be achieved without chemical suppression, whereby the difference between the equivalent ionic conductance of the eluent and analyte cation is measured directly after the analytical column. This test method will consider both suppressed and nonsuppressed detection technologies. The conductivity data is plotted to produce a chromatogram that is used to determine peak areas. A chromatographic integrator or appropriate computer-based data system is typically used for data presentation.

4.2 The cations are identified based on their retention times compared to known standards. Quantification is accomplished

<sup>3</sup> International Standard ISO 14911.

by measuring cation peak areas and comparing them to the areas generated from known standards. The results are calculated using a standard curve based on peak areas of known concentrations of standards in reagent water.

## 5. Significance and Use

5.1 This method is applicable to the simultaneous determination of dissolved alkali and alkaline earth cations and ammonium in water and wastewaters. Alkali and alkaline earth cations are traditionally determined by using spectroscopic techniques, such as AAS or ICP; whereas ammonium can be measured by using a variety of wet chemical methods, including colorimetry, ammonia-selective electrode, and titrimetry. However, ion chromatography provides a relatively straightforward method for the simultaneous determination of cations, such as lithium, sodium, potassium, calcium, magnesium, and ammonium, in fewer than 20–30 min.

## 6. Interferences

6.1 No individual interferences have been established, but it is possible that some low-molecular-weight organic bases (amines) may have similar retention times to analytes of interest, particularly later-eluting solutes, such as potassium, magnesium, and calcium. Potential interferences include amines such as mono-, di-, and trimethylamines; mono-, di-, and triethylamines; and alkanolamines.

6.1.1 High concentrations of analyte cations can interfere with the determination of low concentrations of other analyte cations with similar retention times. For instance, high levels of sodium can interfere with the determination of low levels of ammonium (that is, at ratios >1000:1).

6.1.2 High levels of sample acidity, that is, low pH, can also interfere with this analysis by overloading the column, leading to poor peak shape and loss of resolution. The pH at which the chromatographic separation begins to exhibit poor peak shape depends upon the ion-exchange capacity of the column. It is recommended that columns used for analysis of acidic samples in conjunction with the suppressed conductivity version of this method be able to tolerate acid concentrations up to 50 mM H<sup>+</sup> (pH 1.3), such as the IonPac<sup>®</sup> CS16 column. The columns used with nonsuppressed conductivity detection typically have lower capacity and can tolerate acid concentrations up to 10 mM H<sup>+</sup> (pH 2.0), such as the IC-Pak<sup>™</sup> C/MD column.

6.2 A slight decrease or increase in eluent strength often allows interferences to elute after or before the peak of concern.

6.3 Sodium is a common contaminant from many sources such as fingers, water, detergents, glassware, and other incidental sources. As a precaution, the user of this method is advised to wear plastic gloves and use plasticware for all solutions, standards, and prepared samples. In addition, method blanks should be monitored for background sodium contamination.

## 7. Apparatus

7.1 *Ion Chromatography Apparatus*, analytical system complete with all required accessories, including eluent pump, injector, syringes, columns, suppressor (if used), conductivity detector, data system, and compressed gasses (if required).

7.1.1 *Eluent Pump*, capable of delivering 0.25–5 mL/min of eluent at a pressure of up to 4000 psi.

7.1.2 *Injection Valve*, a low dead-volume switching valve that allows the loading of a sample into a sample loop and subsequent injection of the loop contents into the eluent stream.

7.1.3 *Guard Column*, cation-exchange column typically packed with the same material used in the analytical column. The purpose of this column is to protect the analytical column from particulate matter and irreversibly retained material.

7.1.4 *Analytical Column*, separator column, packed with a weak acid functionalized cation-exchange material, capable of separating the ions of interest from each other, and from other ions that commonly occur in the sample matrix. The chosen column must give separations equivalent to those shown in **Figs. 1 and 2**.

7.1.5 *Suppressor Device*—If using the suppressed conductivity detection mode, the suppressor must provide peak-to-peak noise of <2 nS per minute of monitored baseline.

7.1.6 *Conductivity Detector*, a low-volume, flow-through, temperature-controlled (typically at 35°C) conductivity cell equipped with a meter capable of reading 0–1000 μS/cm on a linear scale.

7.1.7 *Data System*, a chromatographic integrator or computer-based data system capable of graphically presenting the detector output signal versus time, as well as presenting the integrated peak areas.

## 8. Reagents and Materials

8.1 *Purity of Reagents*—Reagent-grade chemicals shall be used in all tests. Unless otherwise indicated, all reagents shall conform to the specifications of the Committee on Analytical Reagents of the American Chemical Society,<sup>4</sup> where such specifications are available. Other grades may be used, provided it is first ascertained that the reagent is of sufficiently high purity to permit its use without reducing the accuracy of the determination.

NOTE 1—Prepare all reagents, standards, and samples in plasticware. Sodium will leach from glassware and bias the quantification of sodium.

8.2 *Purity of Water*—Unless otherwise indicated, references to water shall be understood to mean reagent water conforming to Specification **D 1193**, Type IA. Other reagent water types may be used, provided it is first ascertained that the water is of sufficiently high purity to permit its use without adversely affecting the bias and precision of the determination. For example, neutral organic compounds in the reagent water, measured as total organic carbon (TOC), may significantly erode the performance of this method over time. It is recommended that reagent water with less than 10 ppb TOC be used for all prepared solutions in this method.

8.3 *Eluent Concentrate; Suppressed Conductivity Detection (1.0 M methanesulfonic acid)*—Carefully add 48.040 g of

<sup>4</sup> *Reagent Chemicals, American Chemical Society Specifications*, Am. Chemical Soc., Washington, DC. For suggestions on the testing of reagents not listed by the American Chemical Society, see *Analar Standards for Laboratory Chemicals*, by BDH Ltd., Poole, Dorset, U.K., and the *United States Pharmacopoeia and National Formulary*, U.S. Pharmacopoeial Convention, Inc. (USPC) Rockville, MD.

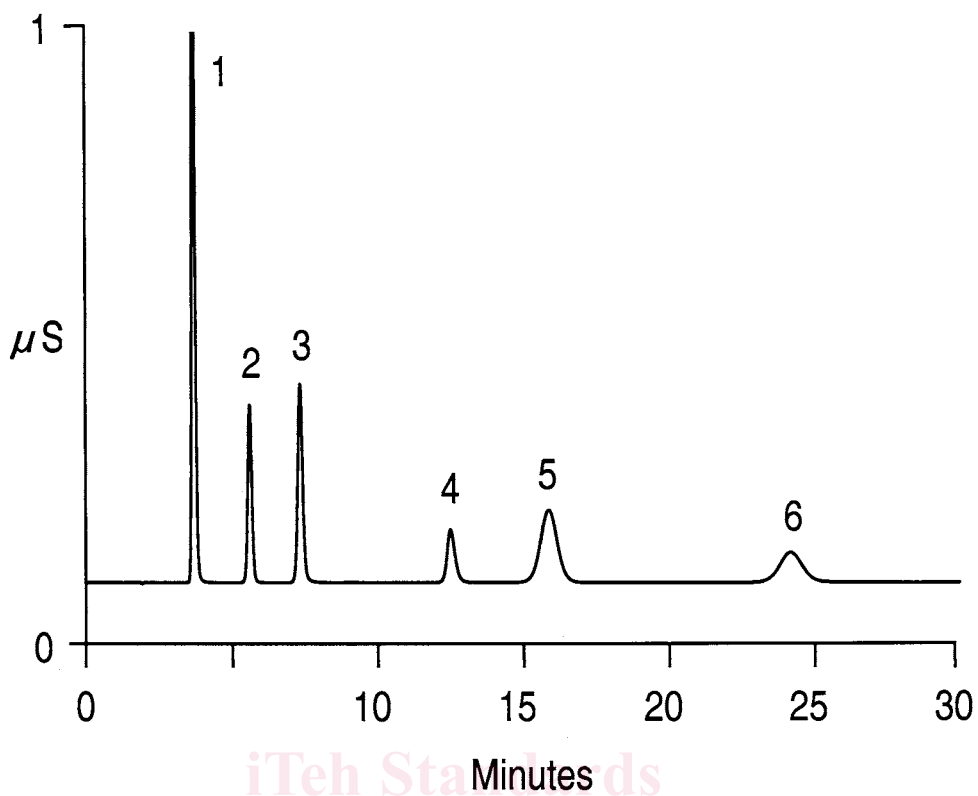


FIG. 1 Example Chromatogram of Dissolved Alkali and Alkaline Earth Cations, and Ammonium by Ion Chromatography Using Suppressed Conductivity Detection

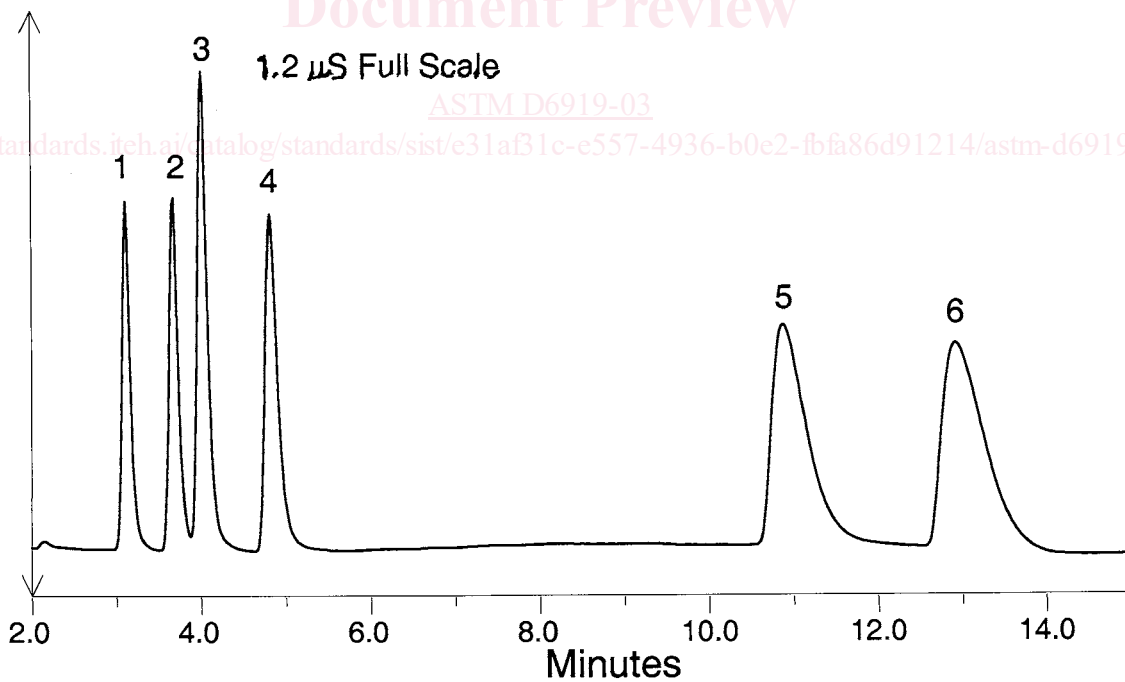


FIG. 2 Example QC Standard Chromatogram of Dissolved Alkali and Alkaline Earth Cations, and Ammonium by Ion Chromatography Using Nonchemically Suppressed Conductivity Detection (Single-Column Indirect Conductivity Detection)

concentrated methanesulfonic acid to approximately 400 mL of water in a 500-mL volumetric flask. Dilute to the mark and mix thoroughly.

NOTE 2—Methanesulfonic acid is a corrosive, strong acid that should be handled with care. Always handle this reagent in a fume hood while wearing gloves and eye protection.

8.4 *Eluent Analysis Solution; Suppressed Conductivity Detection (26 mM methanesulfonic acid)*—Add 26.0 mL of eluent stock (8.3) to a 1-L plastic volumetric flask containing approximately 500 mL of water. Dilute to the mark and mix thoroughly. The eluent analysis solution must be filtered through an appropriate 0.22- or 0.45- $\mu$ m filter and degassed by vacuum sonication or helium sparging prior to use.

8.5 *Eluent Analysis Solution; Nonsuppressed Conductivity Detection (3 mM nitric acid)*—Add 29 mg of EDTA (as the free acid) to a 1-L plastic volumetric flask containing approximately 500 mL of water. Using a magnetic stir bar, mix for 10 min. Add 30 mL of 100 mM nitric acid, or 189  $\mu$ L of concentrated nitric acid. Dilute to the mark and mix thoroughly. The eluent analysis solution must be filtered through an appropriate 0.22- to 0.45- $\mu$ m filter and degassed by vacuum sonication or helium sparging prior to use.

8.6 *Standard Solutions, Stock (1000 mg/L)*—Prepare all standard solutions in plasticware. It is recommended that the user purchase certified stock standard solutions. Stock standards typically used for AAS are also suitable for the preparation of cation working standards.

NOTE 3—Neutral pH cation standards are preferred. Alternatively, prepare stock standard solutions from the following salts, as described below:

8.6.1 *Ammonium Solution, Stock (1000 mg/L)*—Dissolve 2.965 g of anhydrous ammonium chloride in water and dilute to 1 L volumetrically; 1.00 mL = 1.00 mg  $\text{NH}_4^+$ .

8.6.2 *Lithium Solution, Stock (1000 mg/L)*—Dissolve 6.108 g of anhydrous lithium chloride in water and dilute to 1 L volumetrically; 1.00 mL = 1.00 mg  $\text{Li}^+$ .

8.6.3 *Sodium Solution, Stock (1000 mg/L)*—Dissolve 2.541 g of anhydrous sodium chloride in water and dilute to 1 L volumetrically; 1.00 mL = 1.00 mg  $\text{Na}^+$ .

8.6.4 *Potassium Solution, Stock (1000 mg/L)*—Dissolve 3.481 g of anhydrous potassium phosphate monobasic in water and dilute to 1 L volumetrically; 1.00 mL = 1.00 mg  $\text{K}^+$ .

8.6.5 *Magnesium Solution, Stock (1000 mg/L)*—Dissolve 10.144 g of magnesium sulfate heptahydrate in water and dilute to 1 L volumetrically; 1.00 mL = 1.00 mg  $\text{Mg}^{2+}$ .

8.6.6 *Calcium Solution, Stock (1000 mg/L)*—Dissolve 3.668 g of calcium chloride dihydrate in water and dilute to 1 L volumetrically; 1.00 mL = 1.00 mg  $\text{Ca}^{2+}$ .

8.7 *Cation Working Standards*—All calibration standards and standards used for analysis should be prepared in 100-mL volumetric flasks, as described below.

$$\text{Standard concentration (mg/L)} = \frac{(\text{stock volume added (mL)} \cdot 1000 \text{ mg/L})}{100 \text{ (mL)}}$$

Example:

$$10 \text{ mg/L Na} = \frac{(1 \text{ mL Na stock} \cdot 1000 \text{ mg/L Na})}{100 \text{ (mL)}}$$

TABLE 1 Instrument Conditions for the Analysis of Dissolved Alkali and Alkaline Earth Cations and Ammonium by Ion Chromatography Using Suppressed Conductivity Detection

Eluent:	26 mM methanesulfonic acid
Flow rate:	1.5 mL/min
Column:	Dionex IonPac CG16/CS16
Sample Loop:	10 $\mu$ L
Detection:	Suppressed conductivity
Suppressor:	CSRS ULTRA
Background:	~2 $\mu$ S
Solutes:	1 = lithium (1.0 mg/L), 2 = sodium (1.0 mg/L), 3 = ammonium (1.0 mg/L), 4 = potassium (1.0 mg/L), 5 = magnesium (1.0 mg/L), 6 = calcium (1.0 mg/L)

8.8 *Blank*—The blank standard is a portion of the water used to prepare the cation working solutions.

## 9. Precautions

9.1 These methods address the determination of low concentrations of cations. Accordingly, every precaution should be taken to ensure the cleanliness of sample containers, as well as other materials and apparatus that come in contact with the sample.

## 10. Sampling and Sample Preservation

10.1 Collect the sample in accordance with Practice D 3370, as applicable.

10.2 Samples must be collected in plastic containers that are clean and free of artifacts and interferences. The suitability of the containers must be demonstrated for each new lot by performing a container blank and laboratory fortified container blank.

10.3 Samples that will not be analyzed immediately must be preserved with sulfuric acid to a pH of 2. Whereas samples to be analyzed for cations are typically preserved with nitric acid, sulfuric acid is recommended for ammonium.<sup>5</sup> Add 0.8 mL concentrated  $\text{H}_2\text{SO}_4$ /L of sample and store at 4°C. The pH of samples preserved in this manner should be between 1.5 and 2, although some wastewaters may require more concentrated  $\text{H}_2\text{SO}_4$  to achieve this pH. This pH increases the holding time to 28 days.

## 11. Preparation of Apparatus

11.1 Set up the ion chromatograph according to the manufacturer's instructions.

11.2 Typical operating conditions for the ion chromatograph, in both suppressed and nonsuppressed conductivity modes, are summarized in Tables 1 and 2. A 10- $\mu$ L sample injection is recommended for calibration and sample analysis when using chemically suppressed conductivity detection. A larger injection volume, that is, up to 50  $\mu$ L, may be required when using nonsuppressed conductivity detection.

11.3 The detector ranges are variable. Choose a range consistent with the concentration range in the expected samples and within the operating requirements of the chromatographic system used.

<sup>5</sup> Standard Methods for the Examination of Water and Wastewater, APHA, Washington, DC, 1992.