



SLOVENSKI STANDARD
SIST EN 12406:2000
01-december-2000

Swap bodies - Thermal swap bodies of Class C - Dimensions and general requirements

Swap bodies - Thermal swap bodies of Class C - Dimensions and general requirements

Wechselbehälter - Thermal-Wechselbehälter der Klasse C - Maße und allgemeine Anforderungen

Caisses mobiles - Caisses mobiles a température dirigée de classe C - Dimensions et spécifications générales

iTeh STANDARD PREVIEW

(standards.iteh.ai)

[SIST EN 12406:2000](https://standards.iteh.ai/catalog/standards/sist/b8a24558-27f1-4198-94fb-a75a166ba988/sist-en-12406-2000)

Ta slovenski standard je istoveten z: **EN 12406:1999**

<https://standards.iteh.ai/catalog/standards/sist/b8a24558-27f1-4198-94fb-a75a166ba988/sist-en-12406-2000>

ICS:

55.180.10 X^ } æ ^} • \ ã [] ç ð ^ i ã General purpose containers

SIST EN 12406:2000

en

iTeh STANDARD PREVIEW
(standards.iteh.ai)

SIST EN 12406:2000

<https://standards.iteh.ai/catalog/standards/sist/b8a24558-27f1-4198-94fb-a75a1bbba988/sist-en-12406-2000>

EUROPEAN STANDARD

EN 12406

NORME EUROPÉENNE

EUROPÄISCHE NORM

April 1999

ICS 55.180.10

English version

Swap bodies - Thermal swap bodies of Class C - Dimensions and general requirements

Caisses mobiles - Caisses mobiles à température dirigée
de classe C - Dimensions et spécifications générales

Wechselbehälter - Thermal-Wechselbehälter der Klasse C
- Maße und allgemeine Anforderungen

This European Standard was approved by CEN on 25 March 1999.

CEN members are bound to comply with the CEN/CENELEC Internal Regulations which stipulate the conditions for giving this European Standard the status of a national standard without any alteration. Up-to-date lists and bibliographical references concerning such national standards may be obtained on application to the Central Secretariat or to any CEN member.

This European Standard exists in three official versions (English, French, German). A version in any other language made by translation under the responsibility of a CEN member into its own language and notified to the Central Secretariat has the same status as the official versions.

CEN members are the national standards bodies of Austria, Belgium, Czech Republic, Denmark, Finland, France, Germany, Greece, Iceland, Ireland, Italy, Luxembourg, Netherlands, Norway, Portugal, Spain, Sweden, Switzerland and United Kingdom.

[SIST EN 12406:2000](https://standards.iteh.ai/catalog/standards/sist/b8a24558-27f1-4198-94fb-a75a1bbba988/sist-en-12406-2000)

<https://standards.iteh.ai/catalog/standards/sist/b8a24558-27f1-4198-94fb-a75a1bbba988/sist-en-12406-2000>



EUROPEAN COMMITTEE FOR STANDARDIZATION
COMITÉ EUROPÉEN DE NORMALISATION
EUROPÄISCHES KOMITEE FÜR NORMUNG

Central Secretariat: rue de Stassart, 36 B-1050 Brussels

Contents

Foreword	3
Introduction	4
1 Scope	4
2 Normative references	4
3 Definitions	5
3.1 Thermal swap body	5
4 Dimensions and ratings	5
5 Requirements	10
5.1 General requirements	10
5.2 Devices for hanging cargo	10
5.3 Strength of refrigeration or heating unit attachment	11
6 Mandatory features	13
6.1 Bottom fittings	13
6.2 Grappler arm lifting areas	13
6.3 Steering tunnel	13
6.4 Front stop	13
6.5 Supporting legs	13
7 Refrigerating equipment	13
8 Electrical equipment	14
9 Marking	14

ITeH STANDARD PREVIEW
(standards.iteh.ai)

SIST EN 12406:2000

<https://standards.iteh.ai/catalog/standards/sist/b8a24558-27f1-4198-94fb->

[a75a1bbba988/sist-en-12406-2000](https://standards.iteh.ai/catalog/standards/sist/b8a24558-27f1-4198-94fb-a75a1bbba988/sist-en-12406-2000)



Foreword

This European Standard has been prepared by Technical Committee CEN/TC 119 "Swap bodies for combined goods transport", the secretariat of which is held by DIN.

This European Standard shall be given the status of a national standard, either by publication of an identical text or by endorsement, at the latest by October 1999, and conflicting national standards shall be withdrawn at the latest by October 1999.

According to the CEN/CENELEC Internal Regulations, the national standards organizations of the following countries are bound to implement this European Standard: Austria, Belgium, Czech Republic, Denmark, Finland, France, Germany, Greece, Iceland, Ireland, Italy, Luxembourg, Netherlands, Norway, Portugal, Spain, Sweden, Switzerland and the United Kingdom.

The purpose of this standard is to combine the national standards into one single European standard to ensure for the future a free, unimpeded circulation of swap bodies in Europe within road/rail combined transport.

iTeh STANDARD PREVIEW (standards.iteh.ai)

[SIST EN 12406:2000](https://standards.iteh.ai/catalog/standards/sist/b8a24558-27f1-4198-94fb-a75a1bbba988/sist-en-12406-2000)

<https://standards.iteh.ai/catalog/standards/sist/b8a24558-27f1-4198-94fb-a75a1bbba988/sist-en-12406-2000>

Introduction

Thermal swap bodies are transportation equipment for transporting perishable goods.

1 Scope

This European standard specifies the dimensions and basic requirements for thermal swap bodies of class C.

These swap bodies are suitable for international exchange and for conveyance by road and rail including interchange between these forms of transport.

NOTE: "Class C" means that all swap bodies having this designation are equipped with bottom fittings positioned according to the specification for 1C (20') ISO Containers (see ISO 668:1995).

2 Normative references

This European Standard incorporates by dated or undated reference, provisions from other publications. These normative references are cited at the appropriate places in the text and the publications are listed hereafter. For dated references, subsequent amendments to or revisions of any of these publications apply to this European Standard only when incorporated in it by amendment or revision. For undated references the latest edition of the publication referred to applies.

SIST EN 12406:2000		
EN 283	1991	Swap bodies - Testing <small>https://standards.iteh.ai/catalog/standards/sist/b8a24558-27f1-4198-94fb-a75a1bbba988/sist-en-12406-2000</small>
EN 284	1992	Swap bodies - Swap bodies of class C - Dimensions and general requirements
EN ISO 6346	1995	Freight containers - Coding, identification and marking (ISO 6346:1995)
ISO 668	1995	Series 1 freight containers - Classification, dimensions and ratings
ISO 1161	1984	Series 1 freight containers - Corner fittings - Specification
ISO 1496-2	1988	Series 1 freight containers - Specification and testing - Part 2 : Thermal containers
IEC 309-2	1989	Plugs, socket-outlets and couplers for industrial purposes - Part 2 : Dimensional interchangeability requirements for pin and contact-tube accessories
IEC 529	1991	Degrees of protection provided by enclosures

UIC 554-1 ¹⁾	1979	Supply of electrical equipment of railway vehicles from local mains supply or from an auxiliary generator 220 V or 380 V, 50 Hz - Safety requirements
UIC 592-4 ¹⁾	1985	Swap bodies which can be handled by grabs - Technical conditions
UIC 596-6 ¹⁾	1997	Traffic of road vehicles on wagons - Technical organisation - Conditions for coding load units in combined transport and combined transport lines

3 Definitions

For the purpose of this European standard, the following definition applies :

3.1 Thermal swap body

Swap body built with insulating walls, doors, floor and roof designed to retard the rate of heat transmission between the inside and the outside of the swap body and served by a refrigerating or heating appliance.

iTeh STANDARD PREVIEW
(standards.iteh.ai)

4 Dimensions and ratings

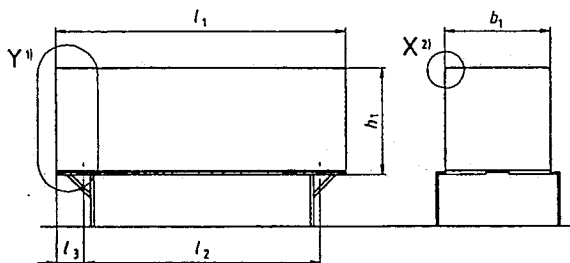
[SIST EN 12406:2000](#)

<https://standards.iteh.ai/catalog/standards/sist/b8a24558-27f1-4198-94fb->

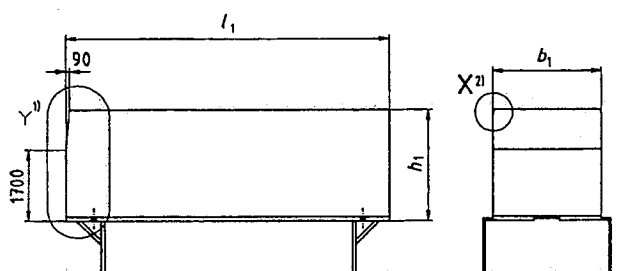
The external dimensions, tolerances and rating (*R*) of thermal swap bodies of class C are those specified in figure 1 and in table 1. No part of the swap body shall project beyond these specified overall external dimensions. The profile of swap bodies shall comply with detail X. The front end of the swap body shall comply with one of the two alternative designs shown in detail Y (see figure 3).

¹⁾ To be obtained: UIC: 16; rue Jean Rey – F – 75015 PARIS

Dimensions in millimetres

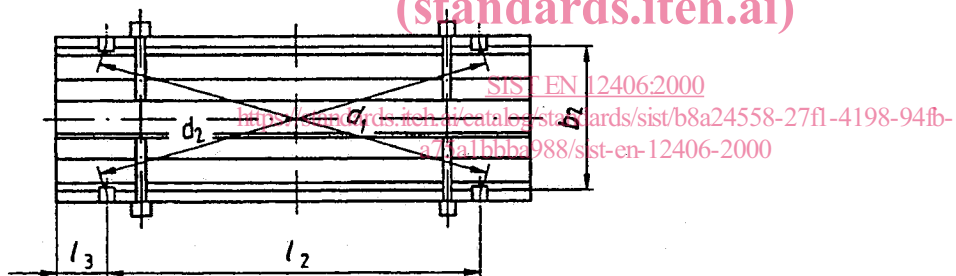


C 715
C 745
C 782



C 763

iTeh STANDARD PREVIEW
(standards.iteh.ai)



NOTE 1: Detail Y, front end see figure 3
NOTE 2: Detail X see figure 2

Figure 1: Main dimensions

DimeTransportation servicesnsions in millimetres

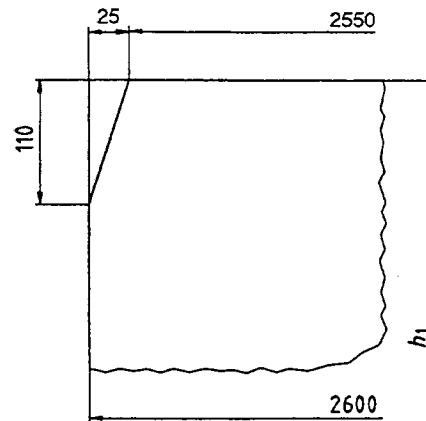
X

NOTE 1:

Definition of the profile for
 $2\,565\text{ mm} \leq h_1 \leq 2\,905\text{ mm}$

is:

The swap body shall be within
 the profile shown opposite.



NOTE 2:

Definition of the profile for
 $2\,565\text{ mm} \leq h_1 \leq 2\,905\text{ mm}$

$2\,550\text{ mm} \leq b_1 \leq 2\,600\text{ mm}$

is:

$$x = \frac{b_1 - 2550}{2} \quad y = \frac{110x}{25}$$

iTeh STANDARD PREVIEW
 (standards.iteh.ai)

SIST EN 12406:2000

<https://standards.iteh.ai/catalog/standards/sist/b8a24558-27f1-4198-94fb-a75a1bbba988/sist-en-12406-2000>

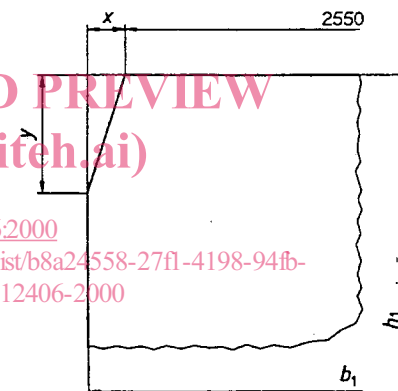


Figure 2 : Detail X of figure 1 - Determination of swap body profile