

SLOVENSKI STANDARD

SIST EN ISO 2858:2012

01-januar-2012

Nadomešča:
SIST EN 22858:2000

Sesalna centrifugalna črpalka (nazivni tlak 16 bar) - Označevanje, nazivna delovna točka in mere (ISO 2858:1975)

End-suction centrifugal pumps (rating 16 bar) - Designation, nominal duty point and dimensions (ISO 2858:1975)

Saugende Kreiselpumpen (Nenndruck 16 bar) - Bezeichnung, Nennbetriebspunkt und Maße (ISO 2858:1975)

Pompes centrifuges à aspiration en bout (pression nominale 16 bar) - Désignation, point de fonctionnement nominal et dimensions (ISO 2858:1975)

Ta slovenski standard je istoveten z: EN ISO 2858:2010

ICS:

23.080

Črpalke

Pumps

SIST EN ISO 2858:2012

en,fr,de

iTeh STANDARD PREVIEW
(standards.iteh.ai)

SIST EN ISO 2858:2012

<https://standards.iteh.ai/catalog/standards/sist/e4d82cd6-2b06-4fea-b324-c4990040a5f7/sist-en-iso-2858-2012>

EUROPEAN STANDARD
NORME EUROPÉENNE
EUROPÄISCHE NORM

EN ISO 2858

December 2010

ICS 23.080

Supersedes EN 22858:1993

English Version

**End-suction centrifugal pumps (rating 16 bar) - Designation,
nominal duty point and dimensions (ISO 2858:1975)**

Pompes centrifuges à aspiration en bout (pression
nominale 16 bar) - Désignation, point de fonctionnement
nominal et dimensions (ISO 2858:1975)

Kreiselpumpen mit axialem Eintritt PN 16 - Bezeichnung,
Nennleistung und Abmessungen (ISO 2858:1975)

This European Standard was approved by CEN on 4 December 2010.

CEN members are bound to comply with the CEN/CENELEC Internal Regulations which stipulate the conditions for giving this European Standard the status of a national standard without any alteration. Up-to-date lists and bibliographical references concerning such national standards may be obtained on application to the CEN-CENELEC Management Centre or to any CEN member.

This European Standard exists in three official versions (English, French, German). A version in any other language made by translation under the responsibility of a CEN member into its own language and notified to the CEN-CENELEC Management Centre has the same status as the official versions.

CEN members are the national standards bodies of Austria, Belgium, Bulgaria, Croatia, Cyprus, Czech Republic, Denmark, Estonia, Finland, France, Germany, Greece, Hungary, Iceland, Ireland, Italy, Latvia, Lithuania, Luxembourg, Malta, Netherlands, Norway, Poland, Portugal, Romania, Slovakia, Slovenia, Spain, Sweden, Switzerland and United Kingdom.

[SIST EN ISO 2858:2012](https://standards.iteh.ai/catalog/standards/sist/e4d82cd6-2b06-4fea-b324-c4990040a5f7/sist-en-iso-2858-2012)

<https://standards.iteh.ai/catalog/standards/sist/e4d82cd6-2b06-4fea-b324-c4990040a5f7/sist-en-iso-2858-2012>



EUROPEAN COMMITTEE FOR STANDARDIZATION
COMITÉ EUROPÉEN DE NORMALISATION
EUROPÄISCHES KOMITEE FÜR NORMUNG

Management Centre: Avenue Marnix 17, B-1000 Brussels

Contents

Page

Foreword.....	3
---------------	---

iTeh STANDARD PREVIEW (standards.iteh.ai)

SIST EN ISO 2858:2012

<https://standards.iteh.ai/catalog/standards/sist/e4d82cd6-2b06-4fea-b324-c4990040a5f7/sist-en-iso-2858-2012>

Foreword

The text of ISO 2858:1975 has been prepared by Technical Committee ISO/TC 115 "Pumps" of the International Organization for Standardization (ISO) and has been taken over as EN ISO 2858:2010 by Technical Committee CEN/TC 197 "Pumps" the secretariat of which is held by AFNOR.

This European Standard shall be given the status of a national standard, either by publication of an identical text or by endorsement, at the latest by June 2011, and conflicting national standards shall be withdrawn at the latest by June 2011.

Attention is drawn to the possibility that some of the elements of this document may be the subject of patent rights. CEN [and/or CENELEC] shall not be held responsible for identifying any or all such patent rights.

This document supersedes EN 22858:1993.

This document replaces and cancel the EN 22858 "End-suction centrifugal pumps (rating 16 bar) - designation, nominal duty point and dimensions (ISO 2858:1975)": its content is identical to the EN 22858, only the numbering of the standard has been changed, to be consistent with the ISO collection numbering.

Attention is drawn on the fact that some references cited in the standard have evolved:

ISO/R 228 replaced by ISO 228 (all parts)

ISO/R 775 has been cancelled

ISO 2084 replaced by "ISO 7005 (all parts)

<https://standards.iteh.ai/catalog/standards/sist/e4d82cd6-2b06-4fea-b324-c4990040-5f7/sist-en-iso-2858-2012>

According to the CEN/CENELEC Internal Regulations, the national standards organizations of the following countries are bound to implement this European Standard: Austria, Belgium, Bulgaria, Croatia, Cyprus, Czech Republic, Denmark, Estonia, Finland, France, Germany, Greece, Hungary, Iceland, Ireland, Italy, Latvia, Lithuania, Luxembourg, Malta, Netherlands, Norway, Poland, Portugal, Romania, Slovakia, Slovenia, Spain, Sweden, Switzerland and the United Kingdom.

Endorsement notice

The text of ISO 2858:1975 has been approved by CEN as a EN ISO 2858:2010 without any modification.

iTeh STANDARD PREVIEW
(standards.iteh.ai)

SIST EN ISO 2858:2012

<https://standards.iteh.ai/catalog/standards/sist/e4d82cd6-2b06-4fea-b324-c4990040a5f7/sist-en-iso-2858-2012>

INTERNATIONAL STANDARD



2858

INTERNATIONAL ORGANIZATION FOR STANDARDIZATION · МЕЖДУНАРОДНАЯ ОРГАНИЗАЦИЯ ПО СТАНДАРТИЗАЦИИ · ORGANISATION INTERNATIONALE DE NORMALISATION

End-suction centrifugal pumps (rating 16 bar) — Designation, nominal duty point and dimensions

Pompes centrifuges à aspiration en bout (pression nominale 16 bar) — Désignation, point de fonctionnement nominal et dimensions

Second edition — 1975-02-15

iTeh STANDARD PREVIEW
(standards.iteh.ai)

SIST EN ISO 2858:2012

<https://standards.iteh.ai/catalog/standards/sist/e4d82cd6-2b06-4fea-b324-c4990040a5f7/sist-en-iso-2858-2012>

UDC 621.671

Ref. No. ISO 2858-1975 (E)

Descriptors : pumps, centrifugal pumps, dimensions, specifications, designation.

Price based on 2 pages

FOREWORD

ISO (the International Organization for Standardization) is a worldwide federation of national standards institutes (ISO Member Bodies). The work of developing International Standards is carried out through ISO Technical Committees. Every Member Body interested in a subject for which a Technical Committee has been set up has the right to be represented on that Committee. International organizations, governmental and non-governmental, in liaison with ISO, also take part in the work.

Draft International Standards adopted by the Technical Committees are circulated to the Member Bodies for approval before their acceptance as International Standards by the ISO Council.

International Standard ISO 2858 (2nd Edition) was drawn up by Technical Committee ISO/TC 115, *Pumps*. It was submitted directly to the ISO Council, in accordance with clause 6.12.1 of the Directives for the technical work of ISO.

This International Standard cancels and replaces International Standard ISO 2858-1973, which had been approved by the Member Bodies of the following countries :

Austria	Israel	Spain
Belgium	Italy	Sweden
Egypt, Arab Rep. of	Netherlands	Switzerland
France	New Zealand	Thailand
Germany	Norway	Turkey
Hungary	Portugal	United Kingdom
India	Romania	U.S.S.R.
Ireland	South Africa, Rep. of	

The Member Bodies of the following countries had expressed disapproval of the document on technical grounds :

Australia
Czechoslovakia
Japan
U.S.A.

End-suction centrifugal pumps (rating 16 bar) – Designation, nominal duty point and dimensions

1 SCOPE AND FIELD OF APPLICATION¹⁾

This International Standard specifies the principal dimensions and nominal duty point of end-suction centrifugal pumps having a maximum operating rating of 16 bar.²⁾

2 REFERENCES

ISO/R 228, *Pipe threads where pressure-tight joints are not made on the threads (1/8 inch to 6 inches).*

ISO 496, *Driving and driven machines – Shaft heights.*

ISO/R 775, *Cylindrical and 1/10 conical shaft ends.*

ISO 3069, *End-suction centrifugal pumps – Dimensions of cavities for mechanical seals and for soft packing.* (Supplement to this International Standard.)

NOTE — ISO 2084 can be used for the dimensions of flanges.

3 DESIGNATION

The pump designation comprises three numbers : the first corresponds to the inlet diameter, the second to the outlet diameter and the third to the nominal diameter of the impeller.

Example of designation

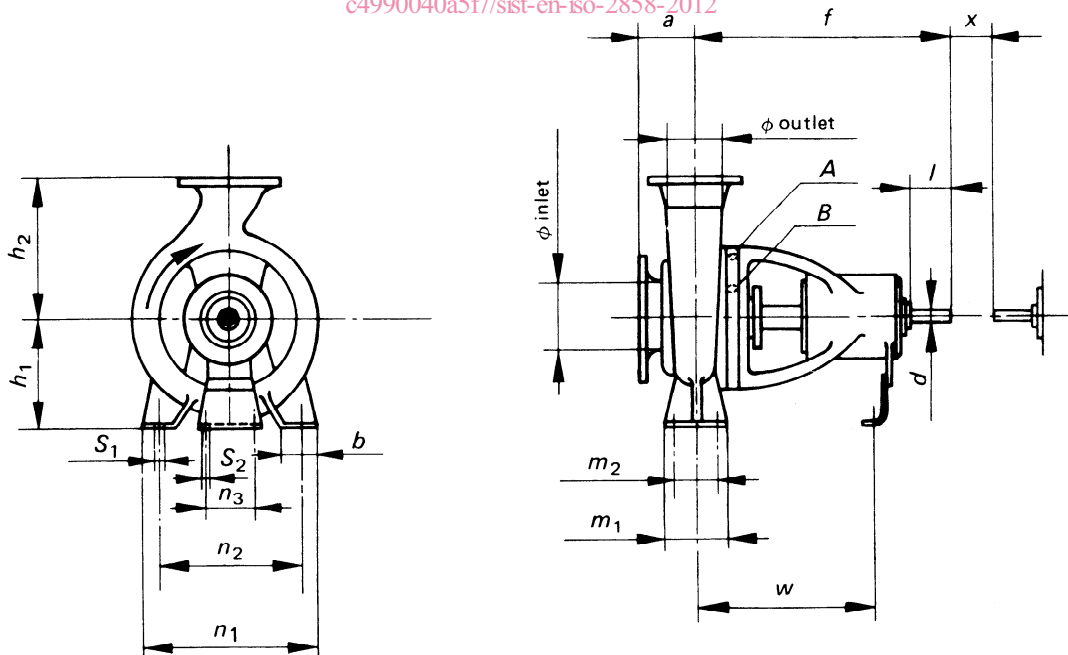
A centrifugal pump with an inlet diameter of 80 mm, an outlet diameter of 50 mm and a nominal impeller diameter of 250 mm is designated 80-50-250.

4 NOMINAL DUTY POINT AND DIMENSIONS

See figure below and table on page 2.

5 STATIC TEST PRESSURE

Static test pressure shall be 1,5 times the maximum discharge pressure but shall not exceed 24 bar. The relation between cold test pressure and hot operating pressure shall be the subject of agreement between manufacturer and user.



NOTE — Tapping points

All connections shall be in accordance with ISO/R 228.

A : Connection for cooling or heating supply to be 3/8 in.

B : Stuffing box tapping points to be as large as possible but not to exceed 1/2 in.

1) The manufacturer shall be consulted about the temperature limitation.

2) 1 bar = 0,1 MPa.