

---

---

**Dental rotary instruments — Cutters —  
Part 2:  
Carbide laboratory cutters**

*Instruments rotatifs dentaires — Fraises techniques —*

*Partie 2: Fraises techniques en carbure*

iTeh STANDARD PREVIEW  
(standards.iteh.ai)

ISO 7787-2:2000

<https://standards.iteh.ai/catalog/standards/sist/7150107a-1dc9-439f9e08-d82e02b49bec/iso-7787-2-2000>



**PDF disclaimer**

This PDF file may contain embedded typefaces. In accordance with Adobe's licensing policy, this file may be printed or viewed but shall not be edited unless the typefaces which are embedded are licensed to and installed on the computer performing the editing. In downloading this file, parties accept therein the responsibility of not infringing Adobe's licensing policy. The ISO Central Secretariat accepts no liability in this area.

Adobe is a trademark of Adobe Systems Incorporated.

Details of the software products used to create this PDF file can be found in the General Info relative to the file; the PDF-creation parameters were optimized for printing. Every care has been taken to ensure that the file is suitable for use by ISO member bodies. In the unlikely event that a problem relating to it is found, please inform the Central Secretariat at the address given below.

**iTeh STANDARD PREVIEW**  
**(standards.iteh.ai)**

ISO 7787-2:2000

<https://standards.iteh.ai/catalog/standards/sist/7150107a-1dc9-439f-9e08-d82e02b49bec/iso-7787-2-2000>

© ISO 2000

All rights reserved. Unless otherwise specified, no part of this publication may be reproduced or utilized in any form or by any means, electronic or mechanical, including photocopying and microfilm, without permission in writing from either ISO at the address below or ISO's member body in the country of the requester.

ISO copyright office  
Case postale 56 • CH-1211 Geneva 20  
Tel. + 41 22 749 01 11  
Fax + 41 22 749 09 47  
E-mail [copyright@iso.ch](mailto:copyright@iso.ch)  
Web [www.iso.ch](http://www.iso.ch)

Printed in Switzerland

## Contents

Page

Foreword.....	iv
Introduction.....	v
1 Scope .....	1
2 Normative references .....	1
3 Classification.....	1
4 Symbols .....	2
5 Requirements .....	2
5.1 Materials .....	2
5.2 Shapes .....	2
5.3 Dimensions and number of blades.....	2
5.4 Tothing.....	8
5.5 Run-out .....	8
6 Test procedures .....	8
6.1 Shapes .....	8
6.2 Dimensions and number of blades.....	8
6.3 Tothing.....	9
6.4 Run-out .....	9
7 Sampling and acceptance level (AQL) .....	9
8 Designation of tothing and number of blades.....	9
9 Marking on the instrument.....	10
10 Labelling on the package.....	10
11 Packaging.....	10

## Foreword

ISO (the International Organization for Standardization) is a worldwide federation of national standards bodies (ISO member bodies). The work of preparing International Standards is normally carried out through ISO technical committees. Each member body interested in a subject for which a technical committee has been established has the right to be represented on that committee. International organizations, governmental and non-governmental, in liaison with ISO, also take part in the work. ISO collaborates closely with the International Electrotechnical Commission (IEC) on all matters of electrotechnical standardization.

International Standards are drafted in accordance with the rules given in the ISO/IEC Directives, Part 3.

Draft International Standards adopted by the technical committees are circulated to the member bodies for voting. Publication as an International Standard requires approval by at least 75 % of the member bodies casting a vote.

Attention is drawn to the possibility that some of the elements of this part of ISO 7787 may be the subject of patent rights. ISO shall not be held responsible for identifying any or all such patent rights.

International Standard ISO 7787-2 was prepared by Technical Committee ISO/TC 106, *Dentistry*, Subcommittee SC 4, *Dental instruments*.

This fourth edition cancels and replaces the third edition (ISO 7787-2:1998), which has been technically revised as follows:

- ITC STANDARD PREVIEW  
(standards.iteh.ai)
- addition of designation of tothing;
  - addition of labelling and marking requirements; [ISO 7787-2:2000](https://standards.iteh.ai/catalog/standards/sist/7150107a-1dc9-439f9e08-d82e02b49bec/iso-7787-2-2000)
  - exclusion of miniature carbide laboratory cutters.

ISO 7787 consists of the following parts, under the general title *Dental rotary instruments — Cutters*:

- *Part 1: Steel laboratory cutters*
- *Part 2: Carbide laboratory cutters*
- *Part 3: Carbide laboratory cutters for milling machines*
- *Part 4: Miniature carbide laboratory cutters*

## Introduction

This part of ISO 7787 is one of a series of standards relating to dental rotary instruments.

The various dimensional and other requirements specified for carbide laboratory cutters are those considered important to ensure the interchangeability and safe usage of these instruments in the dental laboratory.

The nominal diameters of the working part listed in Tables 1 to 11 comply with the diameters specified in ISO 2157, *Dental rotary instruments — Nominal diameters and designation code number*.

Attention is drawn to ISO 6360, which specifies a 15-digit number coding system for the identification of dental rotary instruments of all types.

## iTeh STANDARD PREVIEW (standards.iteh.ai)

ISO 7787-2:2000

<https://standards.iteh.ai/catalog/standards/sist/7150107a-1dc9-439f-9e08-d82e02b49bec/iso-7787-2-2000>

**iTeh STANDARD PREVIEW**  
**(standards.iteh.ai)**

ISO 7787-2:2000

<https://standards.iteh.ai/catalog/standards/sist/7150107a-1dc9-439f9e08-d82e02b49bec/iso-7787-2-2000>

# Dental rotary instruments — Cutters —

## Part 2: Carbide laboratory cutters

### 1 Scope

This part of ISO 7787 specifies the dimensional and other characteristics for the 11 most common carbide cutters, which are predominantly used in the dental laboratory.

NOTE Steel laboratory cutters are specified in ISO 7787-1; carbide laboratory cutters for milling machines are specified in ISO 7787-3; miniature carbide laboratory cutters are specified in ISO 7787-4.

### 2 Normative references

The following normative documents contain provisions which, through reference in this text, constitute provisions of this part of ISO 7787. For dated references, subsequent amendments to, or revisions of, any of these publications do not apply. However, parties to agreements based on this part of ISO 7787 are encouraged to investigate the possibility of applying the most recent editions of the normative documents indicated below. For undated references, the latest edition of the normative document referred to applies. Members of ISO and IEC maintain registers of currently valid International Standards.

ISO 1797-1, *Dental rotary instruments — Shanks — Part 1: Shanks made of metals.*

ISO 2859-1, *Sampling procedures for inspection by attributes — Part 1: Sampling schemes indexed by acceptance quality limit (AQL) for lot-by-lot inspection.*

ISO 6360-1, *Dental rotary instruments — Number coding system — Part 1: General characteristics.*

ISO 6360-2, *Dental rotary instruments — Number coding system — Part 2: Shape and specific characteristics.*

ISO 8325, *Dental rotary instruments — Test methods.*

### 3 Classification

Dental laboratory cutters are classified according to the material used for the working part, as steel laboratory cutters or carbide laboratory cutters. Steel laboratory cutters are specified in ISO 7787-1. This part of ISO 7787 as well as ISO 7787-3 and ISO 7787-4 cover carbide laboratory cutters.

## 4 Symbols

For the purposes of this part of ISO 7787, the following symbols apply.

$d$  diameter of working part, head diameter;

$l$  length of working part, head length;

$\alpha$  angle of working part.

## 5 Requirements

### 5.1 Materials

#### 5.1.1 Working part

The working part shall be made of tungsten carbide. The selection of the type of tungsten carbide and its treatment are at the discretion of the manufacturer.

#### 5.1.2 Shank

The material of the shank shall comply with ISO 1797-1.

### 5.2 Shapes

The shapes of the working part shall be as specified in Figures 1 to 11.

Variations of the shapes are permitted within the limited dimensions and the descriptions used in the subclause titles.

Testing shall be carried out in accordance with 6.1.

### 5.3 Dimensions and number of blades

#### 5.3.1 Working part

##### 5.3.1.1 General

Dimensions are given in millimetres and angles are given in degrees.

The dimensions of the working part shall be as specified in Figures 1 to 11 as appropriate and Tables 1 to 11 as appropriate.

The number of blades shall be as specified in Table 12.

Testing shall be carried out in accordance with 6.2.



5.3.1.2 Spherical, round

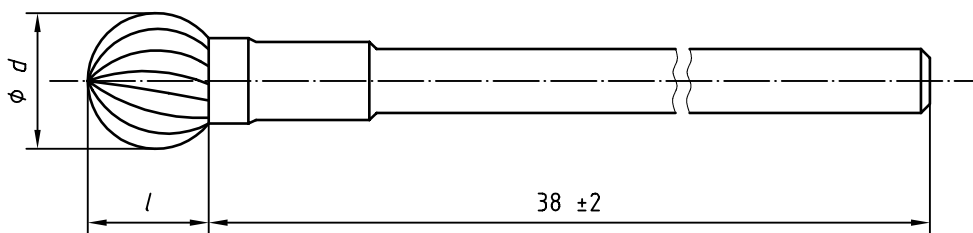


Figure 1

Table 1 — Dimensions

Designation of nominal diameter (Nominal size)	$d$ $\pm 0,3$	$l$ $\pm 0,25$
040	4	3,5
050	5	4,5
060	6	5,5

iTeh STANDARD PREVIEW  
(standards.iteh.ai)

ISO 7787-2:2000

5.3.1.3 Inverted truncated conical

<https://standards.iteh.ai/catalog/standards/sist/7150107a-1dc9-439f9e08-d82e02b49bec/iso-7787-2-2000>

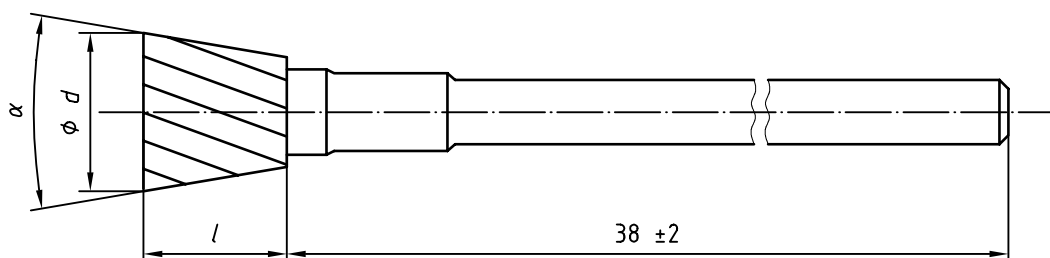


Figure 2

Table 2 — Dimensions

Designation of nominal diameter (Nominal size)	$d$ $\pm 0,3$	$l$ $\pm 0,5$	$\alpha$
060	6	5,5	8° to 12°