
**Carbonaceous materials used in the
production of aluminium — Baked
anodes — Determination of the reactivity
to carbon dioxide —**

Part 2:

Thermogravimetric method

*Produits carbonés utilisés pour la production de l'aluminium — Anodes
cuites — Détermination de la réactivité au dioxyde de carbone —*

Partie 2: Méthode thermogravimétrique

[ISO 12988-2:2004](https://standards.iteh.ai/catalog/standards/iso/096d1bd2-07ff-4ca4-986c-267fbb30ab83/iso-12988-2-2004)

<https://standards.iteh.ai/catalog/standards/iso/096d1bd2-07ff-4ca4-986c-267fbb30ab83/iso-12988-2-2004>



PDF disclaimer

This PDF file may contain embedded typefaces. In accordance with Adobe's licensing policy, this file may be printed or viewed but shall not be edited unless the typefaces which are embedded are licensed to and installed on the computer performing the editing. In downloading this file, parties accept therein the responsibility of not infringing Adobe's licensing policy. The ISO Central Secretariat accepts no liability in this area.

Adobe is a trademark of Adobe Systems Incorporated.

Details of the software products used to create this PDF file can be found in the General Info relative to the file; the PDF-creation parameters were optimized for printing. Every care has been taken to ensure that the file is suitable for use by ISO member bodies. In the unlikely event that a problem relating to it is found, please inform the Central Secretariat at the address given below.

iTeh Standards
(<https://standards.iteh.ai>)
Document Preview

[ISO 12988-2:2004](https://standards.iteh.ai/catalog/standards/iso/096d1bd2-07ff-4ca4-986c-267fbb30ab83/iso-12988-2-2004)

<https://standards.iteh.ai/catalog/standards/iso/096d1bd2-07ff-4ca4-986c-267fbb30ab83/iso-12988-2-2004>

© ISO 2004

All rights reserved. Unless otherwise specified, no part of this publication may be reproduced or utilized in any form or by any means, electronic or mechanical, including photocopying and microfilm, without permission in writing from either ISO at the address below or ISO's member body in the country of the requester.

ISO copyright office
Case postale 56 • CH-1211 Geneva 20
Tel. + 41 22 749 01 11
Fax + 41 22 749 09 47
E-mail copyright@iso.org
Web www.iso.org

Published in Switzerland

Contents

Page

Foreword	iv
Introduction	v
1 Scope	1
2 Normative references	1
3 Terms and definitions	1
4 Principle	2
5 Apparatus	2
6 Reagents	5
7 Sample	5
8 Calibration	5
9 Procedure	7
10 Calculation of results	7
11 Precision and bias	9
12 Test report	11
Bibliography	12

iteh Standards
<https://standards.itech.ai>
 Document Preview

[ISO 12988-2:2004](https://standards.itech.ai)

<https://standards.itech.ai/catalog/standards/iso/096d1bd2-07ff-4ca4-986c-267fbb30ab83/iso-12988-2-2004>

Foreword

ISO (the International Organization for Standardization) is a worldwide federation of national standards bodies (ISO member bodies). The work of preparing International Standards is normally carried out through ISO technical committees. Each member body interested in a subject for which a technical committee has been established has the right to be represented on that committee. International organizations, governmental and non-governmental, in liaison with ISO, also take part in the work. ISO collaborates closely with the International Electrotechnical Commission (IEC) on all matters of electrotechnical standardization.

International Standards are drafted in accordance with the rules given in the ISO/IEC Directives, Part 2.

The main task of technical committees is to prepare International Standards. Draft International Standards adopted by the technical committees are circulated to the member bodies for voting. Publication as an International Standard requires approval by at least 75 % of the member bodies casting a vote.

Attention is drawn to the possibility that some of the elements of this document may be the subject of patent rights. ISO shall not be held responsible for identifying any or all such patent rights.

ISO 12988-2 was prepared by Technical Committee ISO/TC 47, *Chemistry*, Subcommittee SC 7, *Aluminium oxide, cryolite, aluminium fluoride, sodium fluoride, carbonaceous products for the aluminium industry*.

ISO 12988 consists of the following parts, under the general title *Carbonaceous materials used in the production of aluminium — Baked anodes — Determination of the reactivity to carbon dioxide*:

- *Part 1: Loss in mass method*
- *Part 2: Thermogravimetric method*

[ISO 12988-2:2004](https://standards.iteh.ai/standards/iso/096d1bd2-07ff-4ca4-986c-267fbb30ab83/iso-12988-2-2004)

<https://standards.iteh.ai/catalog/standards/iso/096d1bd2-07ff-4ca4-986c-267fbb30ab83/iso-12988-2-2004>

Introduction

The CO₂ reactivities, or reaction rates, are used to quantify the tendency of a carbon artifact to react with carbon dioxide. Carbon consumed by these unwanted side reactions is unavailable for the primary reactions of reducing alumina to the primary metal. CO₂ reactivities and dusting rates are used to quantify the tendency of the coke aggregate or binder coke of a carbon artifact to selectively react with these gases. Preferential attack of the binder coke or coke aggregate of a carbon artifact by these gases causes some carbon to fall off or dust, making the carbon unavailable for the primary reaction of reducing alumina and, more importantly, reducing the efficiency of the aluminium reduction cell.

Comparison of CO₂ reactivities and dusting rates is useful in selecting raw materials for the manufacture of commercial anodes for specific smelting technologies in the aluminium reduction industry.

CO₂ reactivities are used for evaluating effectiveness and beneficiation processes, or for research purposes.

Sampling guidelines are under development.

This part of ISO 12988 is based on ASTM D 6558-00.

iTeh Standards (<https://standards.iteh.ai>) Document Preview

[ISO 12988-2:2004](https://standards.iteh.ai/catalog/standards/iso/096d1bd2-07ff-4ca4-986c-267fbb30ab83/iso-12988-2-2004)

<https://standards.iteh.ai/catalog/standards/iso/096d1bd2-07ff-4ca4-986c-267fbb30ab83/iso-12988-2-2004>

Carbonaceous materials used in the production of aluminium — Baked anodes — Determination of the reactivity to carbon dioxide —

Part 2: Thermogravimetric method

WARNING — This part of ISO 12988 does not purport to address all of the safety concerns, if any, associated with its use. It is the responsibility of the user of this part of ISO 12988 to establish appropriate safety and health practices and determine the applicability of regulatory limitations prior to use.

1 Scope

This test method covers the thermogravimetric (TGA) determination of CO₂ reactivities and dusting of shaped carbon anodes used in the aluminium reduction industry. Many types of apparatus are available with a wide variety of thermal conditions, sample-size capability, materials of construction and procedures for determining the mass loss and subsequent rate of reaction. This test method standardizes the variables of sample dimensions, reaction temperature, gas velocity over the exposed surfaces, and reaction time such that results obtained on different types of apparatus are correlatable.

2 Normative references

[ISO 12988-2:2004](https://standards.iteh.ai/catalog/standards/iso/096d1bd2-07ff-4ca4-986c-267fbb30ab83/iso-12988-2-2004)

<https://standards.iteh.ai/catalog/standards/iso/096d1bd2-07ff-4ca4-986c-267fbb30ab83/iso-12988-2-2004>

The following referenced documents are indispensable for the application of this document. For dated references, only the edition cited applies. For undated references, the latest edition of the referenced document (including any amendments) applies.

ASTM E 691-99, *Standard Practice for Conducting an Interlaboratory Study to Determine the Precision of a Test Method*

3 Terms and definitions

For the purposes of this part of ISO 12988, the following terms and definitions apply.

3.1

dusting

a_{RCD}

that quantity of carbon that falls off the carbon artifact during the test and is collected in the container at the bottom of the reaction chamber

3.2

final CO₂ reactivity

a_{RCf}

rate of mass loss of the carbon artifact during the final 30 min of exposure to CO₂ in the reaction chamber divided by the initial geometric (right cylindrical) exposed surface area of the sample

NOTE The final CO₂ reactivity is expressed in milligrams per square centimetre per hour.

3.3

initial CO₂ reactivity

a_{RCi}

rate of mass loss of the carbon artifact during the first 30 min of exposure to CO₂ in the reaction chamber divided by the initial geometric (right cylindrical) exposed surface area of the sample

NOTE The initial CO₂ reactivity is expressed in milligrams per square centimetre per hour.

3.4

total CO₂ reactivity

a_{RCt}

rate of mass loss of the carbon artifact (including dusting) during the total time that the sample is exposed to CO₂ (420 min) in the reaction chamber divided by the initial geometric (right cylindrical) exposed surface area of the sample

NOTE The total CO₂ reactivity is expressed in milligrams per square centimetre per hour.

4 Principle

The dusting rate and the initial, final and total CO₂ reactivities are determined by passing carbon dioxide gas at a flow rate that gives a standard velocity of reactant gas around cylindrically shaped carbon artifacts under isothermal conditions for a specified length of time. The reactivity is determined by continuously monitoring the sample mass loss. The CO₂ dusting rate is determined by collecting and determining the mass of carbon particles that fall off the sample during reaction.

5 Apparatus

The apparatus to be used should be as simple as possible and be commensurate with what is to be achieved. The principal criterion is that the reaction rate be determined under isothermal conditions and be unaffected by physical and chemical properties inherent to the apparatus (such as gas diffusion patterns, gas temperature, exposed sample surface area, and so forth). A typical apparatus that has been found to be suitable is illustrated in Figure 1.

5.1 Furnace and controller, capable of maintaining constant temperature, within ± 2 °C in the 100-mm reaction zone in which the sample is centred.

A typical apparatus, as illustrated in Figure 1, employs a three-zone heating element and associated controls to accomplish this, but other types of heaters such as tapered windings or long linear heaters are also suitable. The control thermocouple is a grounded type and shall be located within the reaction chamber near the surface of the test sample. This is to allow the furnace controller to compensate for the exothermic reactions that occur when the furnace is used for air reactivity testing. The control thermocouple shall be positioned $4 \text{ mm} \pm 1 \text{ mm}$ from the side surface of the sample and within 5 mm vertically of the centre of the reaction chamber. The furnace shall be large enough to accommodate the reaction chamber.

5.2 Reaction chamber, consisting of a vertical tube constructed of a material capable of withstanding the temperature of the reaction, e.g. $960 \text{ °C} \pm 2 \text{ °C}$ with a sufficiently large inside diameter to accommodate the sample and sample suspension device while not affecting the gas flow past the sample. An inside diameter of $100 \text{ mm} \pm 25 \text{ mm}$ is recommended.

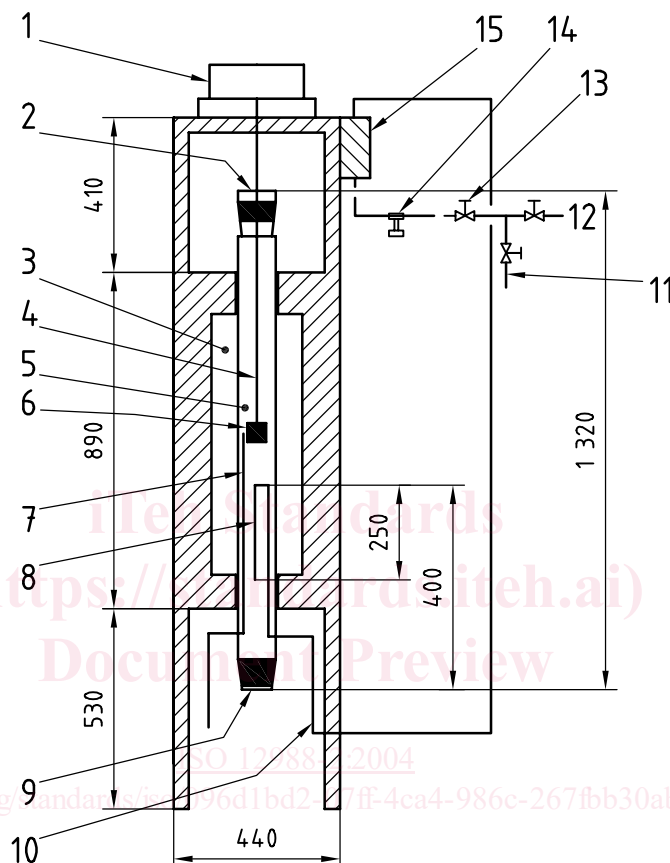
The reaction chamber shall be constructed with a removable dust-collection cup at the bottom capable of capturing all the dust that falls off the sample during the test. The most common materials of construction are quartz and Inconel¹⁾.

1) Inconel is an example of a suitable product available commercially. This information is given for the convenience of users of this part of ISO 12988 and does not constitute an endorsement by ISO of this product.

5.3 Sample suspension device, capable of supporting the sample in the reaction chamber for the duration of the test and which should be reusable.

The sample holder shall not change in mass during the test, shall not affect the flow pattern of the gas past the sample, shall not limit the gas-accessible surface area of the test sample and shall not interfere with the production of dust by the sample. A typical sample holder is illustrated in Figure 2.

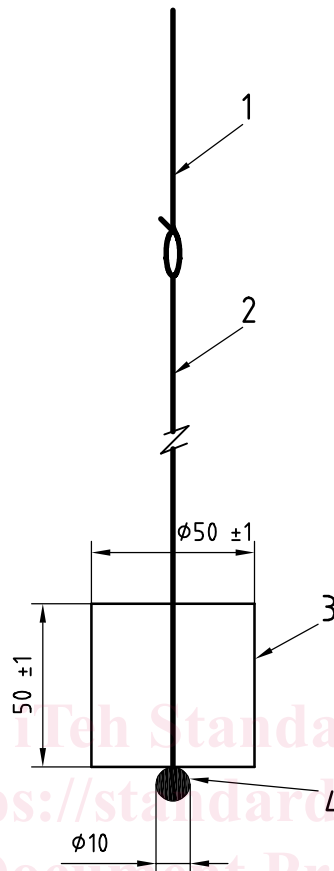
Dimensions in millimetres



Key

- | | | | |
|---|--------------------------------|----|-------------------------|
| 1 | balance | 9 | dust-collection cup |
| 2 | gas outlet (10 mm hole) | 10 | gas inlet |
| 3 | three-zone furnace | 11 | air or CO ₂ |
| 4 | connecting wire (see Figure 2) | 12 | N ₂ |
| 5 | reaction chamber | 13 | pressure-reducing valve |
| 6 | sample | 14 | needle valve |
| 7 | control thermocouple | 15 | flow meter |
| 8 | preheat tube | | |

Figure 1 — Typical CO₂ reactivity apparatus



Key

- 1 suspension wire (Nichrome²⁾)
- 2 sample support wire (platinum, 1 mm diameter)
- 3 cylindrical sample
- 4 stainless steel ball

Figure 2 — Typical sample suspension arrangement

5.4 Gas preheat tube, extending into the first heating zone of the reaction chamber, to preheat the gas prior to entering the reaction chamber.

The length and diameter of the tube may vary, as long as the gas leaving the tube is at the same temperature as the reaction chamber. The inlet gas shall leave the preheat tube downward to prevent channelling of the gas through the reaction chamber and to prevent plugging of the preheat tube with carbon dust.

5.5 Balance, capable of measuring the mass (approximately 200 g maximum) of the sample and sample suspension device to the nearest 0,01 g continuously throughout the duration of the test.

5.6 Gas flow meter, capable of measuring the flow rate of the gas entering the reaction chamber.

All gas flow rates shall be maintained at the rate determined for the particular test apparatus.

5.7 Needle valve, to make fine adjustments to the gas flow rate.

2) Nichrome is an example of a suitable product available commercially. This information is given for the convenience of users of this part of ISO 12988 and does not constitute an endorsement by ISO of this product.