



SLOVENSKI STANDARD SIST EN 3660-065:2010

01-januar-2010

5 YfcbUj h_U!`8 cXUh_]nUc_fc[`Y]b`dfUj c_cfbYYY_kf] bY]b`cdh] bY`cbY_kcfY!
\$*) "XY.`? UWyg_Ugdc^ UZhd`?ž- \$žnUhc d`chbc`g_f `j] YXYYZc`cd`YbUž
hYgb^YbUžgUa cnUd]fU bUnU9B`&- +]b`9B`(\$* +!`GhUbXUfX`nUdfc]nj cX

Aerospace series - Cable outlet accessories for circular and rectangular electrical and optical connectors - Part 065: Cable outlet, style K, 90°, for heat shrinkable boot, shielded, sealed, self-locking for EN 2997 and EN 4067 - Product standard

STANDARD PREVIEW

Luft- und Raumfahrt - Endgehäuse für elektrische und optische Rund- und Rechtecksteckverbinder - Teil 065: Endgehäuse, Bauform K, 90°, für wärmeschrumpfende Bauteile, Schirmanschluß, abgedichtet, selbstsichernd für EN 2997 und EN 4067 - Produktnorm

<https://standards.iteh.ai/catalog/standards/sist/b71b214c-b769-47f1-b064-054e838077f3/sist-en-3660-065-2010>

Serie aerospaciale - Accessoires arriere pour connecteurs circulaires et rectangulaires electriques et optiques - Partie 065: Raccord type K, coude 90°, blinde, etanche, pour manchon thermoretractable, auto-freine pour EN 2997 et EN 4067 - Norme de produit

Ta slovenski standard je istoveten z: EN 3660-065:2009

ICS:

49.060 Š^cē\ æā Ą^•[|b\ æ Aerospace electric
^|\ dā} æĭ]!^{\ æā Ą c\ ā equipment and systems

SIST EN 3660-065:2010 en

iTeh STANDARD PREVIEW
(standards.iteh.ai)

SIST EN 3660-065:2010

<https://standards.iteh.ai/catalog/standards/sist/b71b214c-b769-47f1-b064-054e838077f3/sist-en-3660-065-2010>

EUROPEAN STANDARD

EN 3660-065

NORME EUROPÉENNE

EUROPÄISCHE NORM

November 2009

ICS 49.060

English Version

Aerospace series - Cable outlet accessories for circular and rectangular electrical and optical connectors - Part 065: Cable outlet, style K, 90°, for heat shrinkable boot, shielded, sealed, self-locking for EN 2997 and EN 4067 - Product standard

Série aérospatiale - Accessoires arrière pour connecteurs circulaires et rectangulaires électriques et optiques - Partie 065: Raccord type K, coudé 90°, blindé, étanche, pour manchon thermorétractable, auto-freiné pour EN 2997 et EN 4067 - Norme de produit

Luft- und Raumfahrt - Endgehäuse für elektrische und optische Rund- und Rechtecksteckverbinder - Teil 065: Endgehäuse, Bauform K, 90°, für wärmeschrumpfende Bauteile, Schirmanschluß, abgedichtet, selbstsichernd für EN 2997 und EN 4067 - Produktnorm

This European Standard was approved by CEN on 20 June 2009.

CEN members are bound to comply with the CEN/CENELEC Internal Regulations which stipulate the conditions for giving this European Standard the status of a national standard without any alteration. Up-to-date lists and bibliographical references concerning such national standards may be obtained on application to the CEN Management Centre or to any CEN member.

This European Standard exists in three official versions (English, French, German). A version in any other language made by translation under the responsibility of a CEN member into its own language and notified to the CEN Management Centre has the same status as the official versions.

<https://standards.iteh.ai/catalog/standards/sist/b71b214c-b769-47f1-b064-2010>

CEN members are the national standards bodies of Austria, Belgium, Bulgaria, Cyprus, Czech Republic, Denmark, Estonia, Finland, France, Germany, Greece, Hungary, Iceland, Ireland, Italy, Latvia, Lithuania, Luxembourg, Malta, Netherlands, Norway, Poland, Portugal, Romania, Slovakia, Slovenia, Spain, Sweden, Switzerland and United Kingdom.



EUROPEAN COMMITTEE FOR STANDARDIZATION
COMITÉ EUROPÉEN DE NORMALISATION
EUROPÄISCHES KOMITEE FÜR NORMUNG

Management Centre: Avenue Marnix 17, B-1000 Brussels

Contents

Page

Foreword.....	3
1 Scope	4
2 Normative references	4
3 Terms and definitions	4
4 Characteristics	5
5 Tests.....	9
6 Identification.....	14
7 Marking	15
8 Technical specification	15

iTeh STANDARD PREVIEW
(standards.iteh.ai)

SIST EN 3660-065:2010

<https://standards.iteh.ai/catalog/standards/sist/b71b214c-b769-47f1-b064-054e838077f3/sist-en-3660-065-2010>

Foreword

This document (EN 3660-065:2009) has been prepared by the Aerospace and Defence Industries Association of Europe - Standardization (ASD-STAN).

After enquiries and votes carried out in accordance with the rules of this Association, this Standard has received the approval of the National Associations and the Official Services of the member countries of ASD, prior to its presentation to CEN.

This European Standard shall be given the status of a national standard, either by publication of an identical text or by endorsement, at the latest by May 2010, and conflicting national standards shall be withdrawn at the latest by May 2010.

Attention is drawn to the possibility that some of the elements of this document may be the subject of patent rights. CEN [and/or CENELEC] shall not be held responsible for identifying any or all such patent rights.

According to the CEN/CENELEC Internal Regulations, the national standards organizations of the following countries are bound to implement this European Standard: Austria, Belgium, Bulgaria, Cyprus, Czech Republic, Denmark, Estonia, Finland, France, Germany, Greece, Hungary, Iceland, Ireland, Italy, Latvia, Lithuania, Luxembourg, Malta, Netherlands, Norway, Poland, Portugal, Romania, Slovakia, Slovenia, Spain, Sweden, Switzerland and the United Kingdom.

ITEH STANDARD PREVIEW
(standards.iteh.ai)

[SIST EN 3660-065:2010](https://standards.iteh.ai/catalog/standards/sist/b71b214c-b769-47f1-b064-054e838077f3/sist-en-3660-065-2010)

<https://standards.iteh.ai/catalog/standards/sist/b71b214c-b769-47f1-b064-054e838077f3/sist-en-3660-065-2010>

EN 3660-065:2009 (E)**1 Scope**

This European Standard defines a range of cable outlets, style K, for use under the following conditions:

The mating connectors are listed in EN 3660-002.

Temperature range, Class F	:	– 65 °C to 200 °C;
Class K	:	– 65 °C to 260 °C;
Class W	:	– 65 °C to 175 °C.

Associated electrical accessories : EN 3660-033 Metallic band (for shield termination backshells).

These cable outlets are designed for termination of overall shielding braid or individual cable shields. They accommodate/permit the termination of heat shrinkable boots.

2 Normative references

The following referenced documents are indispensable for the application of this document. For dated references, only the edition cited applies. For undated references, the latest edition of the referenced document (including any amendments) applies.

EN 2591-100*, *Aerospace series — Elements of electrical and optical connection — Test methods — Part 100: General*

EN 2997 (all parts), *Aerospace series — Connectors, electrical, circular, coupled by threaded ring, fire-resistant or non fire-resistant, operating temperatures - 65 °C to 175 °C continuous, 200 °C continuous, 260 °C peak*

<https://standards.iteh.ai/catalog/standards/sist/b71b214c-b769-47f1-b064-8007e3e3e20c>

EN 3660-001:2006, *Aerospace series — Cable outlet accessories for circular and rectangular electrical and optical connectors — Part 001: Technical specification*

EN 3660-002, *Aerospace series — Cable outlet accessories for circular and rectangular electrical and optical connectors — Part 002: Index of product standards*

EN 3660-033, *Aerospace series — Cable outlet accessories for circular and rectangular electrical and optical connectors — Part 033: Metallic band — Product standard*¹⁾

AS85049A, *Connector accessories, electrical general specification for*²⁾

DIN 82, *Knurling*

3 Terms and definitions

For the purposes of this document, the terms and definitions given in EN 3660-001:2006 apply.

* As well as all parts of EN 2591 quoted in this standard.

1) In preparation at the date of publication of this standard.

2) Published by: Society of Automotive Engineers, Inc. (SAE), 400 Commonwealth Drive, Warrendale, PA 15096-0001.

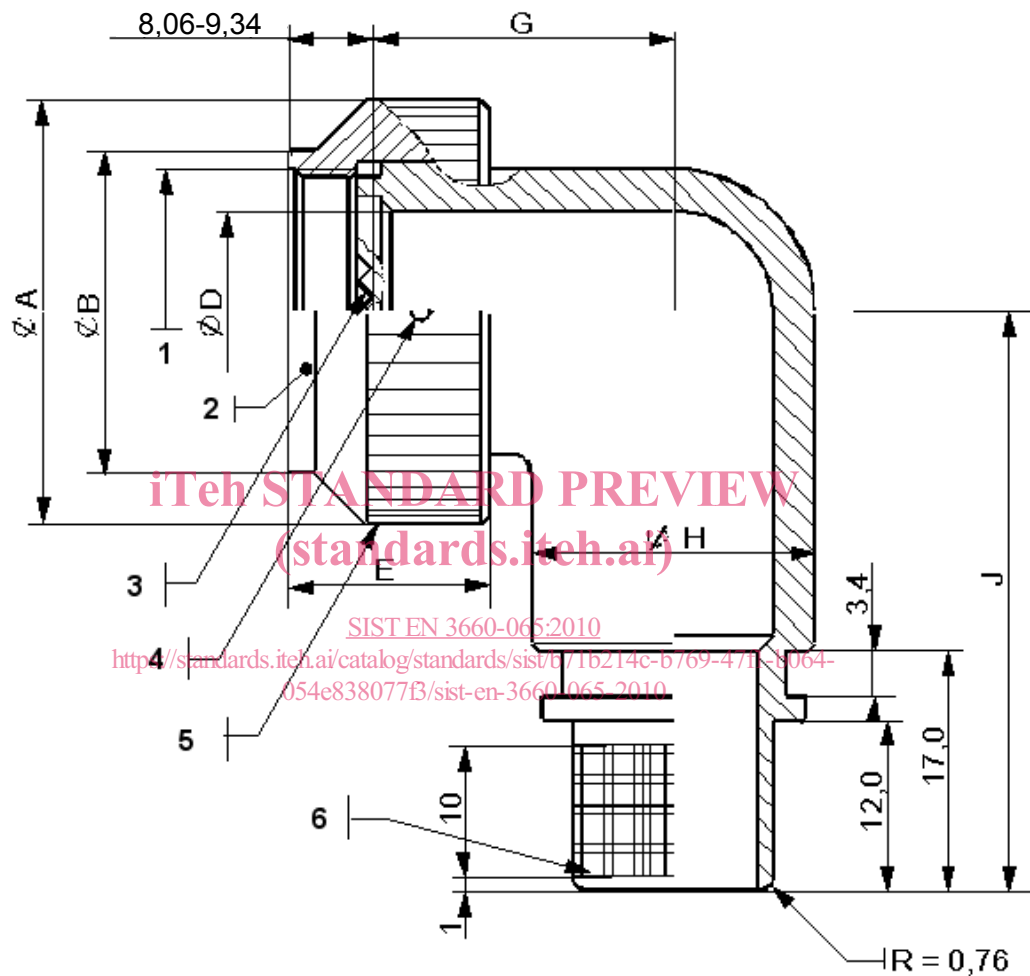
4 Characteristics

4.1 Dimensions and mass

For dimensions and mass, see Figure 1 and Table 1 to Table 4.

For cable entry dimensions, see 4.2.

Dimensions in millimetres



Key

- 1 Thread C
- 2 Marking
- 3 Number of teeth N
- 4 Four holes $\varnothing 2,8$ for tools, depth = 1,27
- 5 RAA 1,0 DIN 82 knurling
- 6 RKV 08 DIN 82 knurling

NOTE Valley of start tooth to be at vertical centre line of accessory at position shown:

- within $\pm 3^\circ$ for shell sizes 08 – 12;
- within $\pm 2^\circ$ for shell sizes 14 – 18;
- within $\pm 1^\circ$ for shell sizes 20 and larger.

Figure 1 — Cable outlet

Table 1 — Fixed dimensions of shell

Dimensions in millimetres

Shell size	A max.	B max.	C Thread	D 0 -0,25	E max.	G max.	H max.	J	N Number of teeth
08	22,48	15,67	0.500-20UNF	6,86	15,3	14,8	10,2	31,05	12
10	25,65	18,64	0.625-24UNEF	9,53	15,3	16,6	13,7	34,21	15
12	28,83	21,79	0.750-20UNEF	12,98	15,3	18,1	16,8	37,95	21
14	32,00	24,99	0.875-20UNEF	14,86	15,3	18,7	17,9	39,65	24
16	35,18	28,24	1.000-20UNEF	18,03	15,3	20,3	21,2	41,25	30
18	38,55	30,94	1.062-18UNEF	20,04	15,3	21,3	23,2	43,65	33
20	41,53	34,16	1.188-18UNEF	23,22	15,3	22,8	26,2	46,91	36
22	44,70	37,29	1.312-18UNEF	26,39	15,3	24,4	29,4	50,10	39
24	47,89	40,46	1.438-18UNEF	29,31	15,3	26,1	32,6	53,26	42

Table 2 — Mass for classes K, F and W

iTech STANDARD PREVIEW

Mass in grams

Shell size code	(End-fitting size code)												Length code wiring chamber
	A	B	C	D	E	F	G	H	J	K	L	M	
08	26,1	—	—	—	—	—	—	—	—	—	—	—	—
10	41,9	42,6	44,0	—	—	—	—	—	—	—	—	—	—
12	52,4	52,4	53,2	—	—	—	—	—	—	—	—	—	—
14	—	64,0	—	—	—	—	—	—	—	—	—	—	B
16	—	78,0	—	—	—	—	—	—	—	—	—	—	—
18	—	—	87,8	89,8	—	—	—	—	—	—	—	—	—
20	—	—	—	106,2	—	110,4	—	—	—	—	—	—	B
22	—	—	—	120,3	121,4	123,3	—	—	—	—	—	—	—
24	—	—	—	—	—	—	141,2	—	—	—	—	—	—

4.2 Cable entry dimensions

See Figure 2 and Table 3.

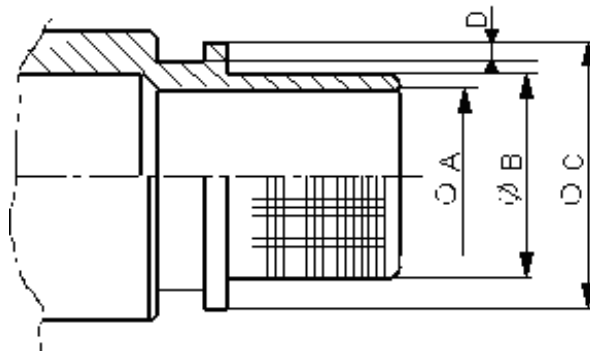


Figure 2 — Dimensions

Table 3

Dimensions in millimetres

End-fitting size code	$\varnothing A$	$\varnothing B$	$\varnothing C$	D	Bundle/cable diameter	
		$\pm 0,1$	$\pm 0,3$	min.	min.	max.
A	4,7	7,7	12,2	1,12	2,0	4,0
B	6,4	9,4	14,0	1,12	3,9	5,5
C	7,9	11,0	15,5	1,12	5,4	7,5
D	9,5	12,6	17,1	1,12	7,4	9,0
E	11,1	14,1	18,7	1,12	9,4	10,5
F	12,7	15,7	20,3	1,12	10,4	12,0
G	15,9	18,9	23,5	1,12	12,4	15,5
H	19,1	22,0	26,7	1,12	15,4	18,5
J	22,2	25,2	29,8	1,75	18,4	21,5
K	25,5	28,4	33,0	1,75	21,4	25,0
L	28,6	31,5	36,2	1,75	25,4	28,0
M	31,8	34,7	39,4	1,75	28,4	31,0

NOTE The cable outlet shall be selected in accordance with the diameter of the cable to be hardened.

4.3 Associated connectors

See EN 3660-002.