



SLOVENSKI STANDARD
SIST ISO/TS 13725:2002
01-julij-2002

Hydraulic fluid power -- Cylinders -- Method for determining the buckling load

Hydraulic fluid power -- Cylinders -- Method for determining the buckling load

Transmissions hydrauliques -- Vérins -- Méthode de détermination du flambage

ITeH STANDARD PREVIEW
 (standards.iteh.ai)

Ta slovenski standard je istoveten z: **ISO/TS 13725:2001**

[SIST ISO/TS 13725:2002](https://standards.iteh.ai/catalog/standards/sist/2b27b093-cf71-4337-a2b0-cb490c43d13d/sist-iso-ts-13725-2002)

<https://standards.iteh.ai/catalog/standards/sist/2b27b093-cf71-4337-a2b0-cb490c43d13d/sist-iso-ts-13725-2002>

ICS:

23.100.20 Pilača } Čača Cylinders

SIST ISO/TS 13725:2002 en

iTeh STANDARD PREVIEW
(standards.iteh.ai)

[SIST ISO/TS 13725:2002](https://standards.iteh.ai/catalog/standards/sist/2b27b093-cf71-4337-a2b0-cb490c43d13d/sist-iso-ts-13725-2002)

<https://standards.iteh.ai/catalog/standards/sist/2b27b093-cf71-4337-a2b0-cb490c43d13d/sist-iso-ts-13725-2002>

TECHNICAL SPECIFICATION

ISO/TS 13725

First edition
2001-08-15

Hydraulic fluid power — Cylinders — Method for determining the buckling load

*Transmissions hydrauliques — Vérins — Méthode de détermination du
flambage*

iTeh STANDARD PREVIEW
(standards.iteh.ai)

[SIST ISO/TS 13725:2002](https://standards.iteh.ai/catalog/standards/sist/2b27b093-cf71-4337-a2b0-cb490c43d13d/sist-iso-ts-13725-2002)

[https://standards.iteh.ai/catalog/standards/sist/2b27b093-cf71-4337-a2b0-
cb490c43d13d/sist-iso-ts-13725-2002](https://standards.iteh.ai/catalog/standards/sist/2b27b093-cf71-4337-a2b0-cb490c43d13d/sist-iso-ts-13725-2002)



Reference number
ISO/TS 13725:2001(E)

© ISO 2001

ISO/TS 13725:2001(E)

PDF disclaimer

This PDF file may contain embedded typefaces. In accordance with Adobe's licensing policy, this file may be printed or viewed but shall not be edited unless the typefaces which are embedded are licensed to and installed on the computer performing the editing. In downloading this file, parties accept therein the responsibility of not infringing Adobe's licensing policy. The ISO Central Secretariat accepts no liability in this area.

Adobe is a trademark of Adobe Systems Incorporated.

Details of the software products used to create this PDF file can be found in the General Info relative to the file; the PDF-creation parameters were optimized for printing. Every care has been taken to ensure that the file is suitable for use by ISO member bodies. In the unlikely event that a problem relating to it is found, please inform the Central Secretariat at the address given below.

iTeh STANDARD PREVIEW (standards.iteh.ai)

[SIST ISO/TS 13725:2002](https://standards.iteh.ai/catalog/standards/sist/2b27b093-cf71-4337-a2b0-cb490c43d13d/sist-iso-ts-13725-2002)

<https://standards.iteh.ai/catalog/standards/sist/2b27b093-cf71-4337-a2b0-cb490c43d13d/sist-iso-ts-13725-2002>

© ISO 2001

All rights reserved. Unless otherwise specified, no part of this publication may be reproduced or utilized in any form or by any means, electronic or mechanical, including photocopying and microfilm, without permission in writing from either ISO at the address below or ISO's member body in the country of the requester.

ISO copyright office
Case postale 56 • CH-1211 Geneva 20
Tel. + 41 22 749 01 11
Fax + 41 22 749 09 47
E-mail copyright@iso.ch
Web www.iso.ch

Printed in Switzerland

Contents

| | Page |
|--|------|
| Foreword..... | iv |
| Introduction..... | v |
| 1 Scope | 1 |
| 2 Symbols and units | 2 |
| 3 Method to be used | 6 |
| 4 Method for pin- mounted hydraulic cylinders | 7 |
| 5 Method for hydraulic cylinders fixed at the beginning of the cylinder tube and pin mounted at the end of the piston rod..... | 10 |
| 6 Method for hydraulic cylinders pin mounted at the beginning of the cylinder tube and fixed at the end of the piston rod..... | 13 |
| 7 Method for hydraulic cylinders fixed at their two ends | 16 |
| 8 Method for hydraulic cylinders fixed at the beginning of the cylinder tube and free at the end of the piston rod..... | 19 |
| 9 Method for hydraulic cylinders fixed at their two ends with a free move allowed at the end of the piston rod | 22 |
| 10 Numerical results..... | 25 |
| 10.1 Dimensions of the calculated cylinder and material characteristics | 25 |
| 10.2 Results | 25 |
| 11 Flow chart..... | 26 |

ISO/TS 13725:2001(E)

Foreword

ISO (the International Organization for Standardization) is a worldwide federation of national standards bodies (ISO member bodies). The work of preparing International Standards is normally carried out through ISO technical committees. Each member body interested in a subject for which a technical committee has been established has the right to be represented on that committee. International organizations, governmental and non-governmental, in liaison with ISO, also take part in the work. ISO collaborates closely with the International Electrotechnical Commission (IEC) on all matters of electrotechnical standardization.

International Standards are drafted in accordance with the rules given in the ISO/IEC Directives, Part 3.

The main task of technical committees is to prepare International Standards. Draft International Standards adopted by the technical committees are circulated to the member bodies for voting. Publication as an International Standard requires approval by at least 75 % of the member bodies casting a vote.

In other circumstances, particularly when there is an urgent market requirement for such documents, a technical committee may decide to publish other types of normative document:

- an ISO Publicly Available Specification (ISO/PAS) represents an agreement between technical experts in an ISO working group and is accepted for publication if it is approved by more than 50 % of the members of the parent committee casting a vote;
- an ISO Technical Specification (ISO/TS) represents an agreement between the members of a technical committee and is accepted for publication if it is approved by 2/3 of the members of the committee casting a vote.

An ISO/PAS or ISO/TS is reviewed every three years with a view to deciding whether it can be transformed into an International Standard.

Attention is drawn to the possibility that some of the elements of this Technical Specification may be the subject of patent rights. ISO shall not be held responsible for identifying any or all such patent rights.

ISO/TS 13725 was prepared by Technical Committee ISO/TC 131, *Fluid power systems*, Subcommittee SC 3, *Cylinders*.

Introduction

Historically, cylinder manufacturers in the fluid power industry have experienced very few rod buckling failures, most likely due to the conservative factors of safety employed in the designs and factors of safety recommended to their users. Many countries and some large companies have developed their own methods for determining the buckling load.

The method presented in this Technical Specification has been developed to comply with the requirements formulated by ISO working group TC 131/SC 3/WG 1 during their meeting of November 1995.

iTeh STANDARD PREVIEW (standards.iteh.ai)

[SIST ISO/TS 13725:2002](https://standards.iteh.ai/catalog/standards/sist/2b27b093-cf71-4337-a2b0-cb490c43d13d/sist-iso-ts-13725-2002)

<https://standards.iteh.ai/catalog/standards/sist/2b27b093-cf71-4337-a2b0-cb490c43d13d/sist-iso-ts-13725-2002>

iTeh STANDARD PREVIEW
(standards.iteh.ai)

[SIST ISO/TS 13725:2002](https://standards.iteh.ai/catalog/standards/sist/2b27b093-cf71-4337-a2b0-cb490c43d13d/sist-iso-ts-13725-2002)

<https://standards.iteh.ai/catalog/standards/sist/2b27b093-cf71-4337-a2b0-cb490c43d13d/sist-iso-ts-13725-2002>

Hydraulic fluid power — Cylinders — Method for determining the buckling load

1 Scope

This Technical Specification specifies a method for the determination of buckling load which

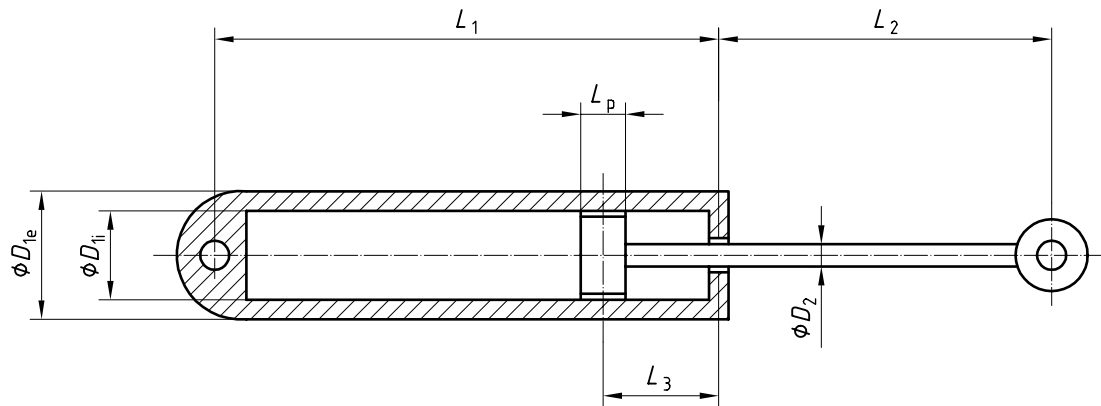
- a) takes into account the complete geometry of the fluid power cylinder, meaning it does not treat the fluid power cylinders as an equivalent bar,
- b) can be extended to be used for all types of cylinder mounting and rod end connection,
- c) includes a factor of safety, k , to be determined by the person performing the calculations and reported with the results of the calculations,
- d) takes into account a possible off-axis loading,
- e) takes into account the weight of the fluid power cylinder, meaning it does not neglect all transverse loads applied on the fluid power cylinder, (standards.iteh.ai)
- f) can take into account a misalignment, but only if it is situated in the plane of cylinder selfweight, and
- g) is easy to transcribe under the form of a simple computer program.

The results given by this method have been compared favourably to those given by several methods already used in the industry for fluid power cylinders in the range 25 mm to 200 mm with 12 mm to 140 mm piston rods. Accordingly, larger- or smaller-sized cylinder designs should be approached with caution when using this method.

NOTE This method is based mainly on original work by Fred Hoblit (Critical buckling load for hydraulic actuating cylinders, *Product Engineering*, July 1950).

2 Symbols and units

See Figures 1 and 2 and Table 1.



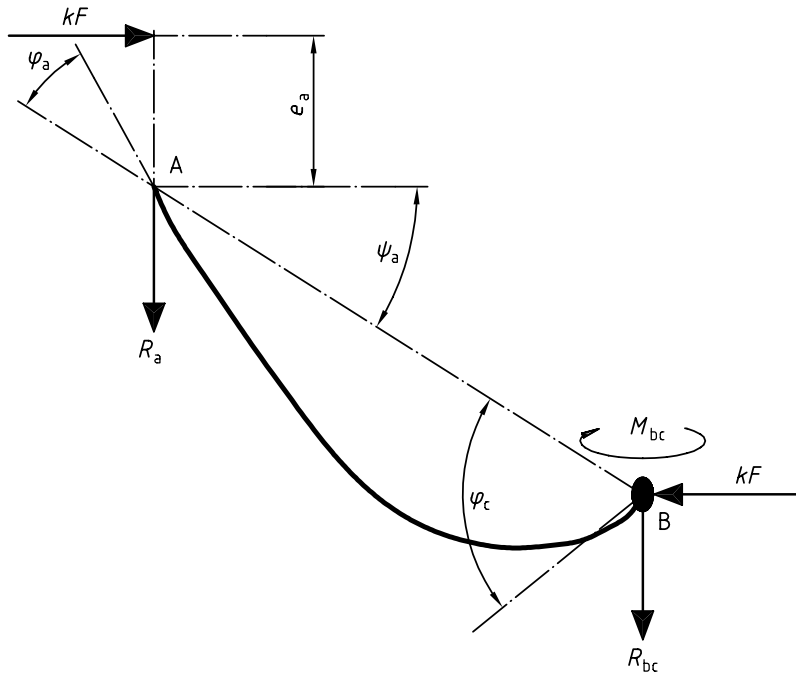
$$L_3 = \frac{L_p + \left(\frac{D_{1e} - D_{1i}}{2} \right)}{2}$$

Figure 1 — Cylinder

iTeh STANDARD PREVIEW
(standards.iteh.ai)

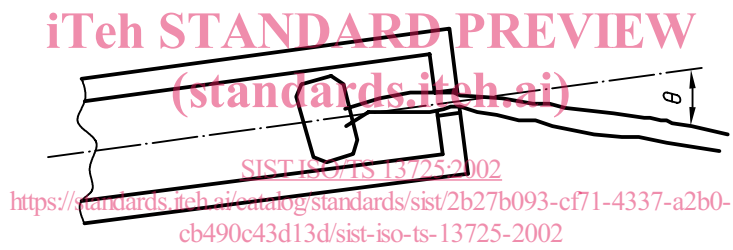
[SIST ISO/TS 13725:2002](https://standards.iteh.ai/catalog/standards/sist/2b27b093-cf71-4337-a2b0-cb490c43d13d/sist-iso-ts-13725-2002)

<https://standards.iteh.ai/catalog/standards/sist/2b27b093-cf71-4337-a2b0-cb490c43d13d/sist-iso-ts-13725-2002>



Cylinder tube: 1 column

Rotational spring joining the two columns



Piston rod: 1 column

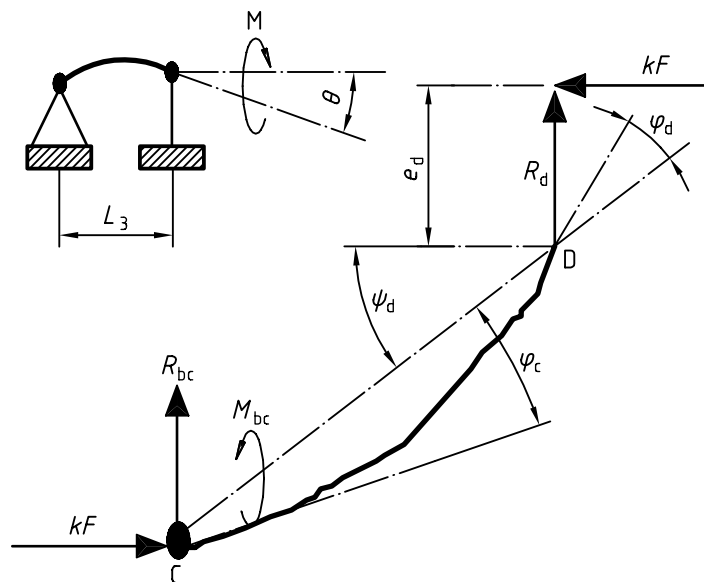


Figure 2 — Model of the hydraulic cylinder

Table 1 — Symbols and units

| Symbol | Meaning | Unit |
|--------------------|--|-------------------|
| C | Stiffness of a spring | N/mm |
| D | Diameter | mm |
| D_{1e} | Outside diameter of the cylinder tube | mm |
| D_{1i} | Inside diameter of the cylinder tube | mm |
| D_2 | Outside diameter of the piston rod | mm |
| e_a e_d | Distance. The loading of an eccentrically loaded column is equivalent to a concentric axial force F and end moment $M = Fe$ | mm |
| E_1 | Modulus of elasticity of cylinder tube material | N/mm ² |
| E_2 | Modulus of elasticity of piston rod material | N/mm ² |
| f | Deflection of a slender bar | mm |
| F | Axial force | N |
| F_{euler} | Euler buckling load | N |
| I | Moment of inertia | mm ⁴ |
| I_1 | Moment of inertia of the cylinder tube | mm ⁴ |
| I_2 | Moment of inertia of the piston rod | mm ⁴ |
| k | Factor of safety | |
| L_1 | Cylinder tube length | mm |
| L_2 | Piston rod length | mm |
| L_3 | Length of the portion of rod situated inside the cylinder tube Distance between centreline of piston and piston rod bearing | mm |
| L_p | Piston length | mm |
| M | Moment | N/mm |
| M_a | Fixed-end moment at the beginning of the cylinder tube of a fixed hydraulic cylinder | N/mm |
| M_{bc} | Moment at junction of cylinder tube and piston rod | N/mm |
| M_d | Fixed-end moment at the end of the piston rod of a fixed hydraulic cylinder | N/mm |
| M_{max} | Maximal moment in the piston rod | N/mm |
| q_1 | $\frac{\sqrt{k \times F}}{\sqrt{E_1 \times I_1}}$ | |
| q_2 | $\frac{\sqrt{k \times F}}{\sqrt{E_2 \times I_2}}$ | |
| r | Radius of piston rod | mm |
| R_a | Reaction at the beginning of the cylinder tube | N |
| R_d | Reaction at the end of the piston rod | N |

| Symbol | Meaning | Unit |
|------------------|--|--------------------|
| R_{bc} | Reaction between cylinder tube and piston rod | N |
| X | Distance from the end of a bar | mm |
| Y | Deflection of a slender bar at distance X | mm |
| $\gamma;g$ | Acceleration to take into account inertial forces | mm/s ² |
| Δ | Distance | mm |
| ε | Small value | |
| θ | Crookedness angle between the deflection curve of the cylinder tube and the deflection curve of the piston rod | rad |
| λ | Slenderness ratio: ratio of the column length to the radius of gyration | |
| ρ_1 | Weight per unit volume of cylinder tube material | kg/mm ³ |
| ρ_2 | Weight per unit volume of piston rod material | kg/mm ³ |
| σ | Stress | N/mm ² |
| σ_e | Yield point of a material | N/mm ² |
| σ_{euler} | Stress at the Euler buckling load | N/mm ² |
| σ_{max} | Maximum compressive stress | N/mm ² |
| σ_s | Ultimate strength of a material | N/mm ² |
| φ_a | Angle of the deflection curve at the beginning of the cylinder tube | rad |
| φ_b | Angle of the deflection curve at the end of the cylinder tube | rad |
| φ_c | Angle of the deflection curve at the beginning of the piston rod | rad |
| φ_d | Angle of the deflection curve at the end of the piston rod | rad |
| ψ_a | Angle at the beginning of the cylinder tube | rad |
| ψ_b | Angle at the end of the piston rod | rad |