
**Pneumatic fluid power systems —
Directional control valves —
Specification of pin assignment for
electrical round connectors of diameters
8 mm and 12 mm**

iTeh STANDARD PREVIEW
(standards.iteh.ai)
*Transmissions pneumatiques — Distributeurs de commande
directionnels — Spécification de l'affectation des broches des
connecteurs électriques ronds de diamètres 8 mm et 12 mm*

[SIST ISO 20401:2005](https://standards.iteh.ai/catalog/standards/sist/8e2f2c33-281f-4cf5-8b29-b30850efab03/sist-iso-20401-2005)

[https://standards.iteh.ai/catalog/standards/sist/8e2f2c33-281f-4cf5-8b29-
b30850efab03/sist-iso-20401-2005](https://standards.iteh.ai/catalog/standards/sist/8e2f2c33-281f-4cf5-8b29-b30850efab03/sist-iso-20401-2005)



PDF disclaimer

This PDF file may contain embedded typefaces. In accordance with Adobe's licensing policy, this file may be printed or viewed but shall not be edited unless the typefaces which are embedded are licensed to and installed on the computer performing the editing. In downloading this file, parties accept therein the responsibility of not infringing Adobe's licensing policy. The ISO Central Secretariat accepts no liability in this area.

Adobe is a trademark of Adobe Systems Incorporated.

Details of the software products used to create this PDF file can be found in the General Info relative to the file; the PDF-creation parameters were optimized for printing. Every care has been taken to ensure that the file is suitable for use by ISO member bodies. In the unlikely event that a problem relating to it is found, please inform the Central Secretariat at the address given below.

iTeh STANDARD PREVIEW
(standards.iteh.ai)

[SIST ISO 20401:2005](https://standards.iteh.ai/catalog/standards/sist/8e2f2c33-281f-4cf5-8b29-b30850efab03/sist-iso-20401-2005)

<https://standards.iteh.ai/catalog/standards/sist/8e2f2c33-281f-4cf5-8b29-b30850efab03/sist-iso-20401-2005>

© ISO 2005

All rights reserved. Unless otherwise specified, no part of this publication may be reproduced or utilized in any form or by any means, electronic or mechanical, including photocopying and microfilm, without permission in writing from either ISO at the address below or ISO's member body in the country of the requester.

ISO copyright office
Case postale 56 • CH-1211 Geneva 20
Tel. + 41 22 749 01 11
Fax + 41 22 749 09 47
E-mail copyright@iso.org
Web www.iso.org

Published in Switzerland

Foreword

ISO (the International Organization for Standardization) is a worldwide federation of national standards bodies (ISO member bodies). The work of preparing International Standards is normally carried out through ISO technical committees. Each member body interested in a subject for which a technical committee has been established has the right to be represented on that committee. International organizations, governmental and non-governmental, in liaison with ISO, also take part in the work. ISO collaborates closely with the International Electrotechnical Commission (IEC) on all matters of electrotechnical standardization.

International Standards are drafted in accordance with the rules given in the ISO/IEC Directives, Part 2.

The main task of technical committees is to prepare International Standards. Draft International Standards adopted by the technical committees are circulated to the member bodies for voting. Publication as an International Standard requires approval by at least 75 % of the member bodies casting a vote.

Attention is drawn to the possibility that some of the elements of this document may be the subject of patent rights. ISO shall not be held responsible for identifying any or all such patent rights.

ISO 20401 was prepared by Technical Committee ISO/TC 131, *Fluid power systems*, Subcommittee SC 5, *Control products and components*.

iTeh STANDARD PREVIEW (standards.iteh.ai)

[SIST ISO 20401:2005](https://standards.iteh.ai/catalog/standards/sist/8e2f2c33-281f-4cf5-8b29-b30850efab03/sist-iso-20401-2005)

<https://standards.iteh.ai/catalog/standards/sist/8e2f2c33-281f-4cf5-8b29-b30850efab03/sist-iso-20401-2005>

Introduction

In pneumatic fluid power systems, power is transmitted and controlled through a fluid under pressure within an enclosed circuit. Typical components found in such systems are pneumatic controls. These devices are used to regulate the function of a component or system.

Some control components found in pneumatic fluid power systems are electrically actuated. For small control components with electrical control mechanisms, plug connectors of round type with diameters of 8 mm and 12 mm are used. For a unified actuation of the control component in relationship to the electrical power, a standardized pin assignment is required.

iTeh STANDARD PREVIEW (standards.iteh.ai)

[SIST ISO 20401:2005](https://standards.iteh.ai/catalog/standards/sist/8e2f2c33-281f-4cf5-8b29-b30850efab03/sist-iso-20401-2005)

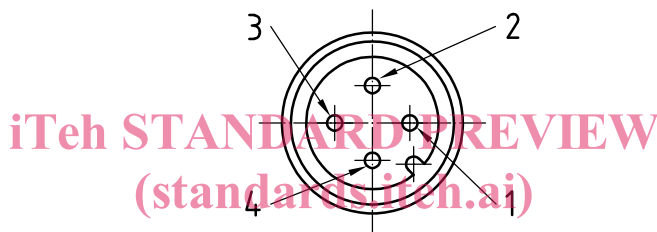
<https://standards.iteh.ai/catalog/standards/sist/8e2f2c33-281f-4cf5-8b29-b30850efab03/sist-iso-20401-2005>

Pneumatic fluid power systems — Directional control valves — Specification of pin assignment for electrical round connectors of diameters 8 mm and 12 mm

1 Scope

This International Standard specifies the pin assignment for pneumatic directional control valves when used together with electrical connectors according to IEC 60947-5-2. This definition is valid for connectors as shown in Figures D.2 and D.4 of IEC 60947-5-2:2004, which are shown in a simplified version below:

— Figure D.2: 12-mm diameter, five-pin connector (pin 5, not shown, is unassigned), male face view



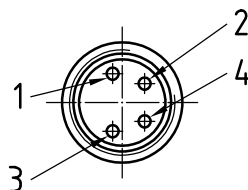
SIST ISO 20401:2005

<https://standards.iteh.ai/catalog/standards/sist/8e2f2c33-281f-4cf5-8b29-b30850efab03/sist-iso-20401-2005>

Key

- | | | | |
|---|-------|---|-------|
| 1 | pin 1 | 2 | pin 2 |
| 3 | pin 3 | 4 | pin 4 |

— Figure D.4: 8-mm diameter, four-pin connector, male face view



Key

- | | | | |
|---|-------|---|-------|
| 1 | pin 1 | 2 | pin 2 |
| 3 | pin 3 | 4 | pin 4 |

2 Normative references

The following referenced documents are indispensable for the application of this document. For dated references, only the edition cited applies. For undated references, the latest edition of the referenced document (including any amendments) applies.

ISO 1219-1, *Fluid power systems and components — Graphic symbols and circuit diagrams — Part 1: Graphic symbols for conventional use and data-processing applications*

ISO 5598, *Fluid power systems and components — Vocabulary*

ISO 11727, *Pneumatic fluid power — Identification of ports and control mechanisms of control valves and other components*

IEC 60947-5-2:2004, *Low-voltage switchgear and controlgear — Part 5-2: Control circuit devices and switching elements — Proximity switches*

3 Terms and definitions

For the purposes of this document, the terms and definitions given in ISO 5598 apply.

4 Symbols and abbreviated terms

Graphic symbols used in Figures 1, 2 and 3 are in accordance with ISO 1219-1.

iTeh STANDARD PREVIEW
(standards.iteh.ai)

5 Electrical contacts (pin allocation) SIST ISO 20401:2005

<https://standards.iteh.ai/catalog/standards/sist/8e2f2c33-281f-4cf5-8b29-b30850efab03/sist-iso-20401-2005>

5.1 Identification

For identification of ports and control mechanisms of pneumatic directional control valves, ISO 11727 shall be used.

5.2 Pin allocation for valves with a single solenoid

The pin allocation for valves with a single solenoid is shown in Figure 1.

- Pin 1: not used
- Pin 2: not used
- Pin 3: 0 V for solenoid
- Pin 4: U_B for solenoid

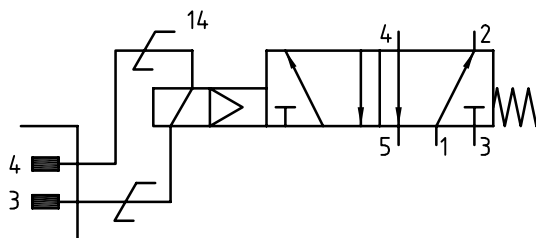


Figure 1 — Pin allocation for valves with a single solenoid

5.3 Pin allocation for valves with double solenoids and one connector

The pin allocation for valves with double solenoids and one connector is shown in Figure 2.

- Pin 1: not used
- Pin 2: U_B for solenoid 12
- Pin 3: 0 V for solenoids
- Pin 4: U_B for solenoid 14

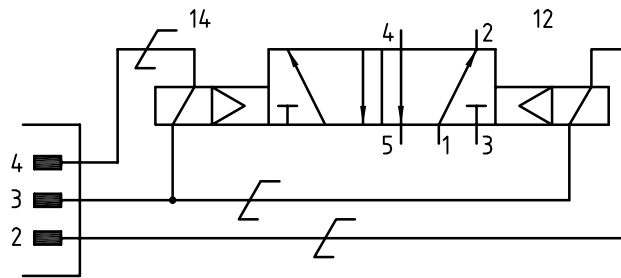


Figure 2 — Pin allocation for valves with double solenoids and one connector

iTeh STANDARD PREVIEW
(standards.iteh.ai)

5.4 Pin allocation for valves with double solenoids and two connectors

The pin allocation for valves with double solenoids and two connectors is shown in Figure 3.

For both connectors:

- Pin 1: not used
- Pin 2: not used
- Pin 3: 0 V for solenoid
- Pin 4: U_B for solenoid

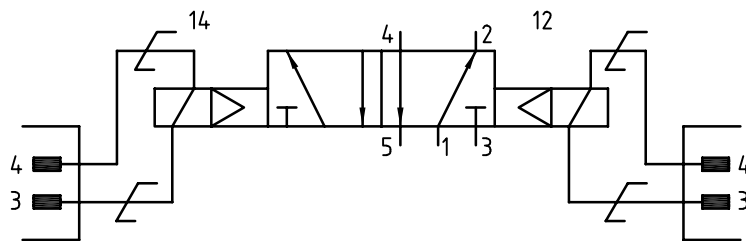


Figure 3 — Pin allocation for valves with double solenoids and two connectors

Bibliography

- [1] ISO 5599-1:2001, *Pneumatic fluid power — Five-port directional control valves — Part 1: Mounting interface surfaces without electrical connector*
- [2] ISO 15407-1:2000, *Pneumatic fluid power — Five-port directional control valves, sizes 18 mm and 26 mm — Part 1: Mounting interface surfaces without electrical connector*

iTeh STANDARD PREVIEW
(standards.iteh.ai)

[SIST ISO 20401:2005](https://standards.iteh.ai/catalog/standards/sist/8e2f2c33-281f-4cf5-8b29-b30850efab03/sist-iso-20401-2005)
<https://standards.iteh.ai/catalog/standards/sist/8e2f2c33-281f-4cf5-8b29-b30850efab03/sist-iso-20401-2005>

iTeh STANDARD PREVIEW
(standards.iteh.ai)

SIST ISO 20401:2005

<https://standards.iteh.ai/catalog/standards/sist/8e2f2c33-281f-4cf5-8b29-b30850efab03/sist-iso-20401-2005>