



SLOVENSKI STANDARD
SIST EN 16120:2013
01-januar-2013

Izdelki za otroke - Otroški sedeži, ki se pritrdijo na stol

Child use and care articles - Chair mounted seat

Artikel für die Säuglinge und Kleinkinder - Sitz erhöhungen für Stühle

Articles de puériculture - Rehausseurs de chaise

Ta slovenski standard je istoveten z: EN 16120:2012

[SIST EN 16120:2013](https://standards.iteh.ai/catalog/standards/sist/d0ffb0c4-1564-45ea-a982-d7a58016418a/sist-en-16120-2013)

<https://standards.iteh.ai/catalog/standards/sist/d0ffb0c4-1564-45ea-a982-d7a58016418a/sist-en-16120-2013>

ICS:

97.140	Pohištvo	Furniture
97.190	Otroška oprema	Equipment for children

SIST EN 16120:2013

en,fr,de

iTeh STANDARD PREVIEW
(standards.iteh.ai)

SIST EN 16120:2013

<https://standards.iteh.ai/catalog/standards/sist/d0ffb0c4-1564-45ea-a982-d7a58016418a/sist-en-16120-2013>

EUROPEAN STANDARD

EN 16120

NORME EUROPÉENNE

EUROPÄISCHE NORM

November 2012

ICS 97.140; 97.190

English Version

Child use and care articles - Chair mounted seat

Articles de puériculture - Rehausseurs de chaise

Artikel für Säuglinge und Kleinkinder - Sitz erhöhungen für
Stühle

This European Standard was approved by CEN on 29 September 2012.

CEN members are bound to comply with the CEN/CENELEC Internal Regulations which stipulate the conditions for giving this European Standard the status of a national standard without any alteration. Up-to-date lists and bibliographical references concerning such national standards may be obtained on application to the CEN-CENELEC Management Centre or to any CEN member.

This European Standard exists in three official versions (English, French, German). A version in any other language made by translation under the responsibility of a CEN member into its own language and notified to the CEN-CENELEC Management Centre has the same status as the official versions.

CEN members are the national standards bodies of Austria, Belgium, Bulgaria, Croatia, Cyprus, Czech Republic, Denmark, Estonia, Finland, Former Yugoslav Republic of Macedonia, France, Germany, Greece, Hungary, Iceland, Ireland, Italy, Latvia, Lithuania, Luxembourg, Malta, Netherlands, Norway, Poland, Portugal, Romania, Slovakia, Slovenia, Spain, Sweden, Switzerland, Turkey and United Kingdom.

SIST EN 16120:2013

<https://standards.iteh.ai/catalog/standards/sist/d0ffb0c4-1564-45ea-a982-d7a58016418a/sist-en-16120-2013>



EUROPEAN COMMITTEE FOR STANDARDIZATION
COMITÉ EUROPÉEN DE NORMALISATION
EUROPÄISCHES KOMITEE FÜR NORMUNG

Management Centre: Avenue Marnix 17, B-1000 Brussels

Contents

Page

Foreword.....	4
1 Scope	5
2 Normative references	5
3 Terms and definitions	5
4 Test equipment	5
4.1 Test probes for finger entrapment	5
4.2 Test mass A.....	6
4.3 Test foam	6
4.4 Small parts cylinder.....	6
4.5 Feeler gauge.....	7
5 General.....	7
5.1 Product conditioning.....	7
5.2 Test conditions	8
5.3 Application of forces	8
5.4 Tolerances	8
5.5 Order of test	8
6 Chemical hazards - Migration of certain elements (see A.2).....	8
7 Thermal hazards (see A.3)	9
8 Mechanical hazards (see A.4).....	9
8.1 Hazards due to height adjustment or folding of the product.....	9
8.1.1 General.....	9
8.1.2 Unintentional release of locking mechanism(s)	9
8.1.3 Test method for the durability of the locking mechanisms	9
8.2 Entrapment hazards (see A.4.1)	10
8.2.1 Entrapment of fingers	10
8.3 Hazards due to moving parts (see A.4.2)	10
8.3.1 Requirements for compression points.....	10
8.3.2 Requirements for shear points.....	10
8.4 Entanglement hazards (see A.4.3)	11
8.4.1 Requirements	11
8.4.2 Test method.....	11
8.5 Choking and ingestion hazards (see A.4.4)	11
8.5.1 Requirements	11
8.5.2 Test methods.....	11
8.6 Suffocation hazards (see A.4.5)	12
8.7 Hazardous edges, corners and protruding parts (see A.4.6)	13
8.8 Hazards from inadequate structural integrity (see A.4.7).....	13
8.8.1 Static strength.....	13
8.8.2 Dynamic strength.....	13
8.9 Chair attachment system	14
8.9.1 Requirements	14
8.9.2 Test methods.....	14
8.10 Restraint system.....	15
8.10.1 Requirements	15
8.10.2 Test methods.....	15
8.11 Hazards due to inadequate size (see A.4.8)	16
8.11.1 Requirement for products not supported on top of the backrest of the chair.....	16
8.11.2 Requirement for products supported on top of the backrest of the chair.....	16

8.11.3	Test method for products not supported on top of the backrest of the chair	16
8.11.4	Test method for products supported on top of the backrest of the chair.....	18
9	Product information	19
9.1	General	19
9.2	Marking of the product.....	19
9.2.1	Requirements.....	19
9.2.2	Durability of marking.....	20
9.2.3	Test method for durability of marking.....	20
9.3	Purchase information.....	20
9.4	Instructions for use	20
Annex A	(informative) Rationales.....	22
A.1	Introduction.....	22
A.2	Chemical hazards (see Clause 6).....	22
A.3	Thermal hazards (see Clause 7).....	22
A.4	Mechanical hazards (see Clause 8)	22
A.4.1	Entrapment hazards (see 8.2)	22
A.4.2	Hazards due to moving parts (see 8.3).....	22
A.4.3	Entanglement hazards (see 8.4).....	23
A.4.4	Choking and ingestion hazards (see 8.5).....	23
A.4.5	Suffocation hazards (see 8.6).....	23
A.4.6	Hazardous edges, corners and protruding parts (see 8.7)	23
A.4.7	Hazards from inadequate structural integrity (see 8.8).....	23
A.4.8	Hazards due to inadequate size (see 8.11)	23

iTeh STANDARD PREVIEW (standards.iteh.ai)

[SIST EN 16120:2013](https://standards.iteh.ai/catalog/standards/sist/d0ffb0c4-1564-45ea-a982-d7a58016418a/sist-en-16120-2013)

<https://standards.iteh.ai/catalog/standards/sist/d0ffb0c4-1564-45ea-a982-d7a58016418a/sist-en-16120-2013>

Foreword

This document (EN 16120:2012) has been prepared by Technical Committee CEN/TC 252 "Child use and care articles", the secretariat of which is held by AFNOR.

This European Standard shall be given the status of a national standard, either by publication of an identical text or by endorsement, at the latest by May 2013, and conflicting national standards shall be withdrawn at the latest by May 2013.

Attention is drawn to the possibility that some of the elements of this document may be the subject of patent rights. CEN [and/or CENELEC] shall not be held responsible for identifying any or all such patent rights.

According to the CEN/CENELEC Internal Regulations, the national standards organisations of the following countries are bound to implement this European Standard: Austria, Belgium, Bulgaria, Croatia, Cyprus, Czech Republic, Denmark, Estonia, Finland, Former Yugoslav Republic of Macedonia, France, Germany, Greece, Hungary, Iceland, Ireland, Italy, Latvia, Lithuania, Luxembourg, Malta, Netherlands, Norway, Poland, Portugal, Romania, Slovakia, Slovenia, Spain, Sweden, Switzerland, Turkey and the United Kingdom.

iTeh STANDARD PREVIEW (standards.iteh.ai)

[SIST EN 16120:2013](https://standards.iteh.ai/catalog/standards/sist/d0ffb0c4-1564-45ea-a982-d7a58016418a/sist-en-16120-2013)

<https://standards.iteh.ai/catalog/standards/sist/d0ffb0c4-1564-45ea-a982-d7a58016418a/sist-en-16120-2013>

1 Scope

This European Standard specifies safety requirements and test methods for chair mounted seats intended to be fixed on an adult chair to raise the sitting position of a child able to sit unaided up to an age of 3 years or a maximum weight of 15 kg.

The European Standard does not apply to products only aimed at restraining the child on a chair without raising the child's sitting position.

2 Normative references

The following documents, in whole or in part, are normatively referenced in this document and are indispensable for its application. For dated references, only the edition cited applies. For undated references, the latest edition of the referenced document (including any amendments) applies.

EN 71-3:1994, *Safety of toys — Part 3: Migration of certain elements*

EN 1103, *Textiles — Fabrics for apparel — Detailed procedure to determine the burning behaviour*

EN ISO 2439, *Flexible cellular polymeric materials — Determination of hardness (indentation technique)* (ISO 2439)

iTeh STANDARD PREVIEW
(standards.iteh.ai)

3 Terms and definitions

For the purposes of this document, the following terms and definitions apply.

3.1

chair attachment system

system designed to attach the chair mounted seat to the adult chair

3.2

restraint system

system to restrain the child within the chair mounted seat

3.3

waist restraint

device to restrain the child in the waist area

3.4

crotch restraint

device to fit between the child's legs

4 Test equipment

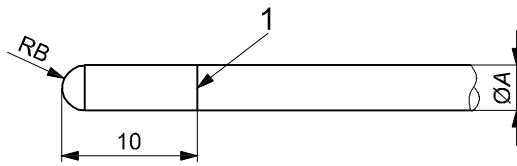
4.1 Test probes for finger entrapment

Probes made from plastics or other hard, smooth material of diameters $7_{-0,1}^0$ mm and $12_0^{+0,1}$ mm with a full hemispherical end that can be mounted on a force-measuring device, see Figure 1.

Mesh probe made from plastics or other hard, smooth material as shown in Figure 2.

EN 16120:2012 (E)

Dimensions in millimetres



Key

1 line scribed around circumference showing depth of penetration

Probe type	7 mm probe	12 mm probe
Diameter A	$7_{-0,1}^0$	$12_{0}^{+0,1}$
Radius RB	$3,5 \pm 0,2$	$6 \pm 0,2$

Figure 1 — Test probes with hemispherical end

Dimensions in millimetres



<https://standards.iteh.ai/catalog/standards/sist/d0ffb0c4-1564-45ea-a982-87a580167416/sist-en-16120-2013>
 Figure 2 — Test probe for mesh

4.2 Test mass A

A cylindrical bag with a diameter of 180 mm filled with sand to a total mass of 10 kg.

4.3 Test foam

Soft foam sheet (for example polyurethane) having a thickness of 25 mm with a bulk density of $(30 \pm 2) \text{ kg/m}^3$ and an indentation hardness index of 170 ± 20 according to EN ISO 2439.

4.4 Small parts cylinder

Small parts cylinder for the assessment of small components, having dimensions in accordance with Figure 3.

Dimension in millimetres

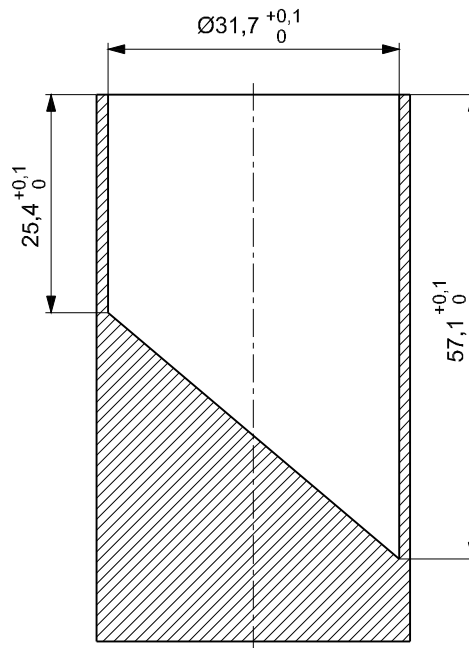


Figure 3 — Small parts cylinder
 iTeh STANDARD PREVIEW
 (standards.iteh.ai)

4.5 Feeler gauge

Gauge with a thickness of $(0,4 \pm 0,02)$ mm and an insertion edge radius of $(3 \pm 0,5)$ mm (see Figure 4).

SIST EN 16120:2013
<https://standards.iteh.ai/catalog/standards/sist/d01fb6c4-1564-45ca-a982-d7a58016418a/sist-en-16120-2013>

Dimensions in millimetres

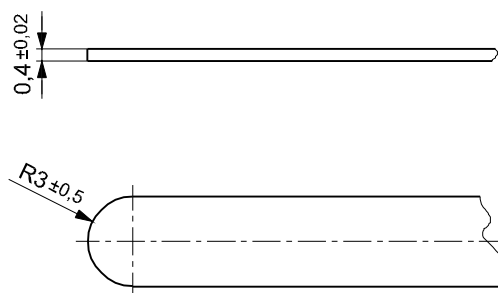


Figure 4 — Feeler gauge

5 General

5.1 Product conditioning

Before testing, any fabrics used shall be cleaned or washed and dried twice in accordance with the manufacturer's instructions.

EN 16120:2012 (E)**5.2 Test conditions**

The tests shall be carried out at a temperature of (20 ± 5) °C.

The tests are designed to be applied to chair mounted seats that are fully assembled and ready for use in accordance with the manufacturer's instructions. If the chair mounted seat can be assembled or adjusted in different ways, the most onerous combination shall be used for each test.

5.3 Application of forces

The forces in the static load tests shall be applied sufficiently slowly to ensure that negligible dynamic force is applied.

5.4 Tolerances

Unless otherwise stated, the following tolerances apply:

- Forces: ± 5 % of the nominal force;
- Masses: $\pm 0,5$ % of the nominal mass;
- Dimensions: $\pm 1,0$ mm of the nominal dimension;
- Angles: $\pm 2^\circ$ of the nominal angle;
- Positioning of loading pads: ± 5 mm;
- Duration of forces: ± 1 s.

iTech STANDARD PREVIEW
(standards.iteh.ai)

The tests are described in terms of the application of forces. Masses can however be used: 1 kg mass may be used for 10 N force.

Unless otherwise specified, the test forces may be applied by any suitable device which does not adversely affect the results.

5.5 Order of test

Unless otherwise stated, the requirements of Clause 8 shall be assessed on the same chair mounted seat in the order listed in this standard.

6 Chemical hazards - Migration of certain elements (see A.2)

The migration of elements from coatings of paint, varnish, lacquer, polymer and similar coatings on exterior surfaces shall not exceed the following amounts:

Antimony:	60 mg/kg
Arsenic:	25 mg/kg
Barium:	1000 mg/kg
Cadmium:	75 mg/kg
Chromium:	60 mg/kg
Lead:	90 mg/kg
Mercury:	60 mg/kg
Selenium:	500 mg/kg

These limits shall be verified in accordance with the test method given in EN 71-3:1994.

Where a surface is coated with a multi-layer of paint or similar coating, the test sample shall not include the base material.

A separate sample may be used for these tests.

7 Thermal hazards (see A.3)

When tested in accordance with EN 1103 there shall be no flash effect.

These requirements apply to parts with an area greater than 310 cm².

A separate sample may be used for these tests.

8 Mechanical hazards (see A.4)

8.1 Hazards due to height adjustment or folding of the product

8.1.1 General

Chair mounted seats in which the height of the sitting area can be adjusted shall have locking mechanism(s), complying with 8.1.2, to maintain the chair mounted seat in its position of normal use.

Chair mounted seats in which the base can be folded for storage shall have locking mechanism(s), complying with 8.1.2, to maintain the chair mounted seat in its position of normal use.

Chair attachment systems shall not be considered as locking mechanisms for height adjustment of the sitting area.

Inflatable systems shall be fitted with non-return valves.

8.1.2 Unintentional release of locking mechanism(s)

To avoid the hazards due to unintentional release of locking mechanisms, one of the following conditions shall be fulfilled before and after testing in accordance with 8.1.3:

- a) at least one locking mechanism requires an operating force greater than 50 N, or
- b) at least one locking mechanism is released by the use of a tool, or
- c) height adjustment requires at least two consecutive actions, the first of which shall be maintained while the second is carried out, or
- d) height adjustment requires at least two independent and simultaneous actions.

Inflatable systems are excluded from the requirements of this clause.

Products that in every position of use have to be removed from the adult chair to adjust the height or to fold the base for storage are excluded from the requirements of this clause.

8.1.3 Test method for the durability of the locking mechanisms

Operate 300 times any locking mechanism(s).