



**SLOVENSKI STANDARD**  
**SIST EN 13885:2005+A1:2010**

**01-oktober-2010**

---

**Stroji za predelavo hrane - Stroji za sponkanje - Varnostne in higienske zahteve  
(vključno z dopnilom A1)**

Food processing machinery - Clipping machines - Safety and hygiene requirements

Nahrungsmittelmaschinen - Clipmaschinen - Sicherheits- und Hygieneanforderungen

Machines pour les produits alimentaires - Machines à attacher - Prescriptions relatives à  
la sécurité et à l'hygiène

**STANDARD PREVIEW**  
**(standards.iteh.ai)**

**Ta slovenski standard je istoveten z: EN 13885:2005+A1:2010**

SIST EN 13885:2005+A1:2010  
<https://standards.iteh.ai/catalog/standards/sist/8d7d78aa-9fd1-4959-ad14-f1d8e1accece/sist-en-13885-2005a1-2010>

---

**ICS:**

67.260

Tovarne in oprema za  
živilsko industrijo

Plants and equipment for the  
food industry

**SIST EN 13885:2005+A1:2010**

**en,fr,de**

**iTeh STANDARD PREVIEW**  
**(standards.iteh.ai)**

SIST EN 13885:2005+A1:2010

<https://standards.iteh.ai/catalog/standards/sist/8d7d78aa-9fd1-4939-ad14-f1d8e1acece/sist-en-13885-2005a1-2010>

EUROPEAN STANDARD  
NORME EUROPÉENNE  
EUROPÄISCHE NORM

**EN 13885:2005+A1**

June 2010

ICS 67.260

Supersedes EN 13885:2005

English Version

## Food processing machinery - Clipping machines - Safety and hygiene requirements

Machines pour les produits alimentaires - Machines à attacher - Prescriptions relatives à la sécurité et à l'hygiène

Nahrungsmittelmaschinen - Clipmaschinen - Sicherheits- und Hygieneanforderungen

This European Standard was approved by CEN on 21 April 2005 and includes Amendment 1 approved by CEN on 20 May 2010.

CEN members are bound to comply with the CEN/CENELEC Internal Regulations which stipulate the conditions for giving this European Standard the status of a national standard without any alteration. Up-to-date lists and bibliographical references concerning such national standards may be obtained on application to the CEN Management Centre or to any CEN member.

This European Standard exists in three official versions (English, French, German). A version in any other language made by translation under the responsibility of a CEN member into its own language and notified to the CEN Management Centre has the same status as the official versions.

CEN members are the national standards bodies of Austria, Belgium, Bulgaria, Croatia, Cyprus, Czech Republic, Denmark, Estonia, Finland, France, Germany, Greece, Hungary, Iceland, Ireland, Italy, Latvia, Lithuania, Luxembourg, Malta, Netherlands, Norway, Poland, Portugal, Romania, Slovakia, Slovenia, Spain, Sweden, Switzerland and United Kingdom.

[SIST EN 13885:2005+A1:2010](https://standards.iteh.ai/catalog/standards/sist/8d7d78aa-9fd1-4939-ad14-f1d8e1acece/sist-en-13885-2005a1-2010)

<https://standards.iteh.ai/catalog/standards/sist/8d7d78aa-9fd1-4939-ad14-f1d8e1acece/sist-en-13885-2005a1-2010>



EUROPEAN COMMITTEE FOR STANDARDIZATION  
COMITÉ EUROPÉEN DE NORMALISATION  
EUROPÄISCHES KOMITEE FÜR NORMUNG

Management Centre: Avenue Marnix 17, B-1000 Brussels

## Contents

Page

Foreword.....	4
Introduction .....	5
<b>1 Scope .....</b>	<b>6</b>
1.1 This European Standard applies to clipping machines.....	6
1.2 This European Standard covers the following types of machines: .....	6
1.3 Description .....	8
1.4 Intended use.....	9
<b>2 Normative references .....</b>	<b>9</b>
<b>3 Terms and definitions .....</b>	<b>10</b>
<b>4 List of significant hazards .....</b>	<b>12</b>
4.1 General.....	12
4.2 Mechanical hazards .....	12
4.3 Electrical hazards .....	16
4.4 Pneumatic hazards .....	16
4.5 Hazards generated by loss of stability .....	16
4.6 Hazards generated by noise .....	16
4.7 Hazards generated by neglecting ergonomic principles.....	16
4.8 Hazards generated by not neglecting hygienic principles.....	17
<b>5 Safety and hygiene requirements and/or protective measures .....</b>	<b>17</b>
5.1 General.....	17
5.2 Mechanical hazards .....	17
5.3 Electrical hazards .....	25
5.4 Pneumatic hazards .....	28
5.5 Hazards generated by loss of stability .....	28
5.6 Noise reduction.....	28
5.7 Ergonomic requirements .....	28
5.8 Hygiene and cleaning.....	28
<b>6 Verification of safety and hygiene requirements and/or protective measures .....</b>	<b>30</b>
<b>7 Information for use .....</b>	<b>31</b>
7.1 General.....	31
7.2 Instruction handbook .....	31
7.3 Training of operators.....	33
7.4 Marking .....	33
<b>Annex A (normative) Noise test code for clipping machines (grade 2).....</b>	<b>35</b>
<b>Annex B (normative) Design principles to ensure cleanability of clipping machines.....</b>	<b>37</b>
<b>Annex C (normative) Common hazards for food processing machines and reduction requirements applicable to clipping machines .....</b>	<b>42</b>
<b>Annex ZA (informative) <math>\square</math> Relationship between this European Standard and the Essential Requirements of EU Directive 2006/42/EC <math>\square</math>.....</b>	<b>44</b>
<b>Bibliography .....</b>	<b>45</b>

## Figures

Figure 1 — Machine with removal by fixed clip guide.....	7
Figure 2 — Machine with removal by movable clip guide.....	7
Figure 3 — Machine with spread-removal .....	8
Figure 4 — Spread-removal – detail .....	8
Figure 5 — Clipping machine with fixed clip guide .....	12
Figure 6 — Clipping machine with movable clip guide .....	13
Figure 7 — Floor machine – Danger zones.....	14
Figure 8 — Added or integrated machines .....	15
Figure 9 — Table top machine with fixed clip guide.....	18
Figure 10 — Section A/A.....	18
Figure 11 — Section A/A with fixed protection beading .....	19
Figure 12a — Clipping machine with movable clip guide – removal open .....	20
Figure 12b — Clipping machine with movable clip guide – removal shut .....	20
Figure 12 — Clipping machine with movable clip guide in different positions .....	20
Figure 13 — Infeed and outfeed side at clipping machines with protection bars .....	22
Figure 14 — Infeed- and outfeedside at clipping machines with protection hood.....	23
Figure 15 — Position of actuation devices .....	24
Figure 16 — ON/OFF-switch with hood.....	26
Figure 17 — Hygiene areas.....	29
Figure B.1 — Smooth surfaces – food area.....	37
Figure B.2 — Angles and radii in the food area .....	38
Figure B.3 — Angles in the food area .....	39
Figure B.4 — Intersecting surfaces in the food area .....	39
Figure B.5 — Admissible fasteners – head profiles .....	40
Figure B.6 — Castors – dimensions examples .....	41

**EN 13885:2005+A1:2010 (E)****Foreword**

This document (EN 13885:2005+A1:2010) has been prepared by Technical Committee CEN/TC 153 “**A1** Machinery intended for use with foodstuffs and feed **A1**”, the secretariat of which is held by DIN.

This European Standard shall be given the status of a national standard, either by publication of an identical text or by endorsement, at the latest by December 2010, and conflicting national standards shall be withdrawn at the latest by December 2010.

Attention is drawn to the possibility that some of the elements of this document may be the subject of patent rights. CEN [and/or CENELEC] shall not be held responsible for identifying any or all such patent rights.

This document includes Amendment 1, approved by CEN on 2010-05-20.

This document supersedes EN 13885:2005.

The start and finish of text introduced or altered by amendment is indicated in the text by tags **A1** **A1**.

This document has been prepared under a mandate given to CEN by the European Commission and the European Free Trade Association, and supports essential requirements of **A1** EU Directive(s) **A1**.

For relationship with EU Directive(s), see informative Annex ZA, which is an integral part of this document.

**A1** *deleted text* **A1**

According to the CEN/CENELEC Internal Regulations, the national standards organizations of the following countries are bound to implement this European Standard: Austria, Belgium, Bulgaria, Croatia, Cyprus, Czech Republic, Denmark, Estonia, Finland, France, Germany, Greece, Hungary, Iceland, Ireland, Italy, Latvia, Lithuania, Luxembourg, Malta, Netherlands, Norway, Poland, Portugal, Romania, Slovakia, Slovenia, Spain, Sweden, Switzerland and United Kingdom.

## Introduction

This European Standard is a type C standard as stated in EN ISO 12100-1.

The machinery concerned and the extent to which hazards, hazardous situations and events are covered are indicated in the scope of this **Ⓐ** document **Ⓐ**.

When provisions of this type C standard are different from those which are stated in type A or B standards, the provisions of this type C standard take precedence over the provisions of the other standards, for machines that have been designed and built according to the provisions of this type C standard.

## iTeh STANDARD PREVIEW (standards.iteh.ai)

[SIST EN 13885:2005+A1:2010](https://standards.iteh.ai/catalog/standards/sist/8d7d78aa-9fd1-4939-ad14-f1d8e1acece/sist-en-13885-2005a1-2010)

<https://standards.iteh.ai/catalog/standards/sist/8d7d78aa-9fd1-4939-ad14-f1d8e1acece/sist-en-13885-2005a1-2010>

**EN 13885:2005+A1:2010 (E)****1 Scope****1.1 This European Standard applies to clipping machines**

This European Standard specifies safety and hygiene requirements to minimise the hazards which can arise during the commissioning, the use and the maintenance of clipping machines for portioning and closing of casings filled with foodstuffs, and intended to be used in butcheries, meat processing factories, main kitchens and other food processing factories.

This European Standard deals with all significant hazards, hazardous situations and events relevant to clipping machines, when they are used  $\text{A1}$  as intended and under conditions of misuse which are reasonably foreseeable by the manufacturer (see Clause 4)  $\text{A1}$ .

This European Standard is not applicable to clipping machines which are manufactured before the date of publication of this European Standard by CEN.

**1.2 This European Standard covers the following types of machines:**

Concerning the sort of actuation:

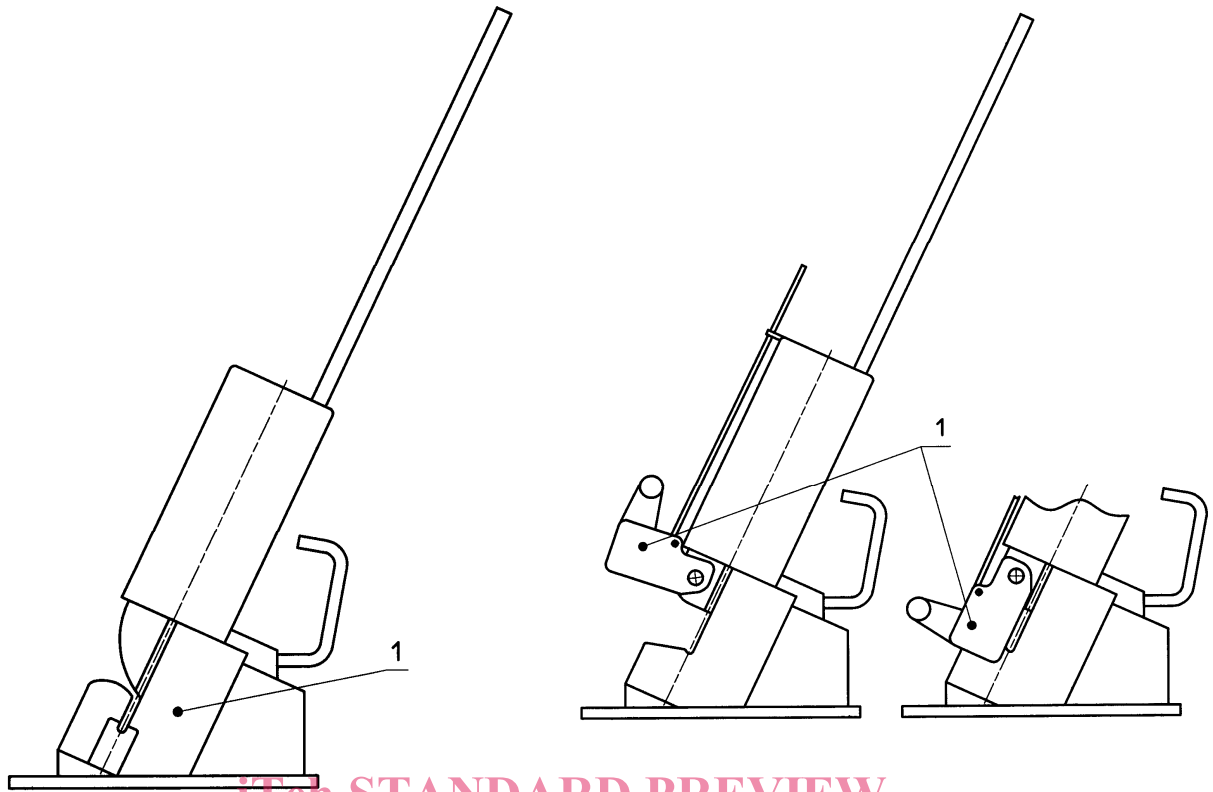
- machine for gathering up by hand, power motioned locking-stroke;
- machine for automatic-motioned gathering and automatic-motioned locking-stroke.

Concerning the removal-system:

- machine with removal by fixed or movable clip-guide (see Figures 1 and 2);
- machine with spread-removal (see Figures 3 and 4).

**STANDARD PREVIEW**  
(standards.iteh.ai)  
[SIST EN 13885:2005+A1:2010  
https://standards.iteh.ai/catalog/standards/sist/8d7d78aa-9fd1-4939-ad14-f1d8e1acece/sist-en-13885-2005a1-2010](https://standards.iteh.ai/catalog/standards/sist/8d7d78aa-9fd1-4939-ad14-f1d8e1acece/sist-en-13885-2005a1-2010)





ITeh STANDARD PREVIEW  
(standards.iteh.ai)

**Key**

- 1 Fixed clip guide

**Figure 1 — Machine with removal by fixed clip guide**

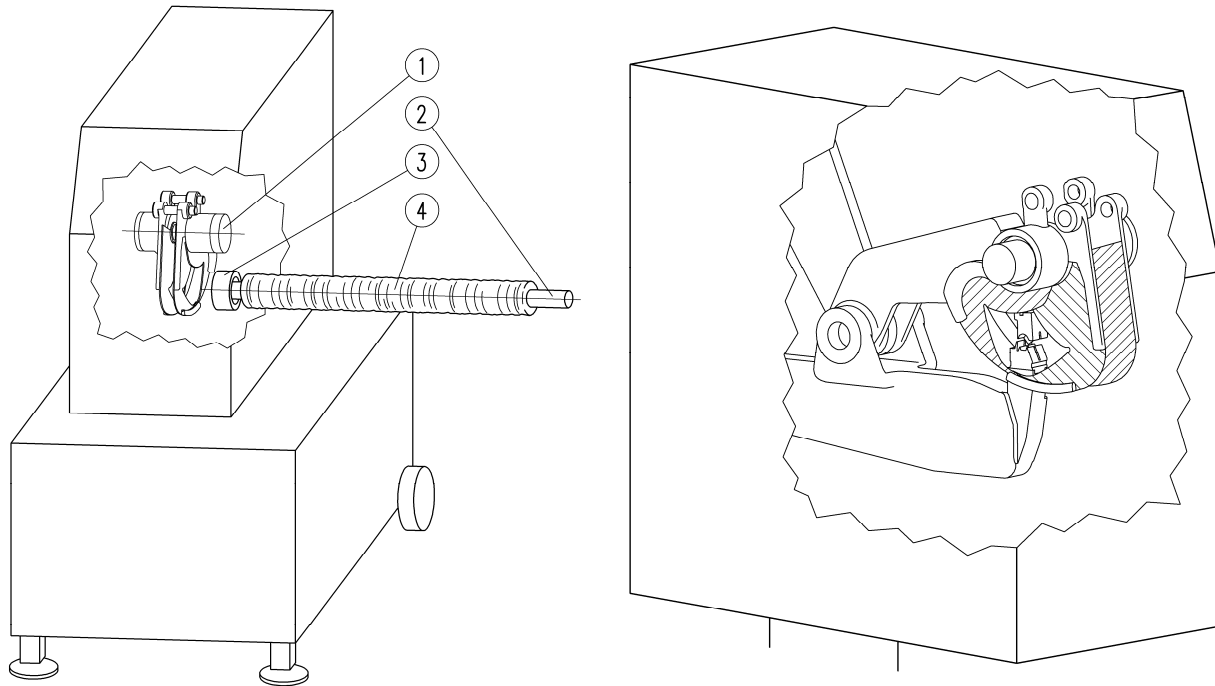
**Key**

- 1 Movable clip guide

**Figure 2 — Machine with removal by movable clip guide**

<https://standards.iteh.ai/catalog/standards/sist/8d7d78aa-9fd1-4939-ad14-f1d8e1accece/sist-en-13885-2005a1-2010>

## EN 13885:2005+A1:2010 (E)

**Key**

- 1 Spread-removal
- 2 Filling-tube
- 3 Casing brake
- 4 Tube (casing)

**iTeh STANDARD PREVIEW**  
(standards.iteh.ai)

**Figure 3 — Machine with spread-removal**

**Figure 4 — Spread-removal – detail**

SIST EN 13885:2005+A1:2010  
<https://standards.iteh.ai/catalog/standards/sist/8d7d78aa-9fd1-4939-ad14-fd8e1acece/sist-en-13885-2005a1-2010>

Concerning construction:

- table-top-machine;
- movable floor machines;
- floor-mounted-machine.

### 1.3 Description

Clipping machines will be used for closing of tubes with a single-clip (one side) or a double-clip (endlocking and startlocking).

The machines are equipped with closing tools (punch/die), which make the locking by deforming the locking-element (clip).

A removal/gathering is used to form a free space and to gather the tube in a way that the locking equipment can be put over the pressed tail and this can be locked.

By automatic action the clipping machine will be placed at the end of the filling-tube and after each ejecting of the filling-portion there are positioned one or two clips at the casing.

From the machine the filled portion will be divided with a knife from the skin which still remains on the filling-tube. If necessary, an additional loop for hanging up the package will be attached.

## 1.4 Intended use

A clipping machine is designed and constructed in such a way, that in combination with a filling equipment, the food stuff will be transported through a filling-tube in a casing, which is gathered on the filling-tube. Afterwards this casing will be closed with a clip.

Furthermore, it is usual to close already filled casings, bags or other packages by hand with a free-standing or hand-operated/hand held clipping machine.

Although it should be advised against, the standard, taking into account practice, deals with the hazards due to cleaning with pressurised water.

With the aim of clarifying the intentions of the standard and avoiding doubts when reading it, the following assumptions were made when producing it:

- only designated and instructed persons operate the machine;
- place of use is adequately lit.

## 2 Normative references

The following referenced documents are indispensable for the application of this document. For dated references, only the edition cited applies. For undated references, the latest edition of the referenced document (including any amendments) applies.

- EN 574, *Safety of machinery — Two-hand control devices — Functional aspects — Principles for design*
- EN 614-1, *Safety of machinery — Ergonomic design principles — Part 1: Terminology and general principles*
- EN 953, *Safety of machinery — Guards — General requirements for the design and construction of fixed and movable guards*
- EN 983, *Safety of machinery — Safety requirements for fluid power systems and components — Pneumatics*
- EN 1005-1, *Safety of machinery — Human physical performance — Part 1: Terms and definitions*
- EN 1005-2, *Safety of machinery — Human physical performance — Part 2: Manual handling of machinery and component parts of machinery*
- EN 1005-3, *Safety of machinery — Human physical performance — Part 3: Recommended force limits for machinery operation*
- EN 1088:1995, *Safety of machinery — Interlocking devices associated with guards — Principles for design and selection*
- EN 1672-2:2005, *Food processing machinery — Basic concepts — Part 2: Hygiene requirements*
- EN 60204-1:2006, *Safety of machinery — Electrical equipment of machines — Part 1: General requirements (IEC 60204-1:2005, modified)*
- EN 60529, *Degrees of protection provided by enclosures (IP code) (IEC 60529:1989)*
- EN 61496-1:2004, *Safety of machinery — Electro-sensitive protective equipment — Part 1: General requirements and tests (IEC 61496-1:2004, modified)*
- EN ISO 3744:1995, *Acoustics — Determination of sound power levels of noise sources using sound pressure — Engineering method in an essentially free field over a reflecting plane (ISO 3744:1994)*

**EN 13885:2005+A1:2010 (E)**

EN ISO 4871, *Acoustics — Declaration and verification of noise emission values of machinery and equipment (ISO 4871:1996)*

EN ISO 11201:1995, *Acoustics — Noise emitted by machinery and equipment — Measurement of emission sound pressure levels at a work station and at other specified positions — Engineering method in an essentially free field over a reflecting plane (ISO 11201:1995)*


EN ISO 11688-1, *Acoustics — Recommended practice for the design of low-noise machinery and equipment — Part 1: Planning (ISO/TR 11688-1:1995)*

EN ISO 12100-1:2003, *Safety of machinery — Basic concepts, general principles for design — Part 1: Basic terminology, methodology (ISO 12100-1:2003)*

EN ISO 12100-2:2003, *Safety of machinery — Basic concepts, general principles for design — Part 2: Technical principles (ISO 12100-2:2003)*

EN ISO 13849-1:2008, *Safety of machinery — Safety-related parts of control systems — Part 1: General principles for design (ISO 13849-1:2006)*

EN ISO 13857, *Safety of machinery — Safety distance to prevent danger zones being reached by the upper limbs (ISO 13857:2008)*

EN ISO 14121-1, *Safety of machinery — Risk assessment — Part 1: Principles (ISO 14121-1:2007)* 

**3 Terms and definitions****STANDARD PREVIEW****(standards.iteh.ai)**

For the purposes of this European Standard, the terms and definitions given in EN ISO 12100-1:2003, EN ISO 12100-2:2003, and the following apply.

**3.1 discharge device**

inclined plane with/without rolls or driven discharge belt

[SIST EN 13885:2005+A1:2010  
https://standards.iteh.ai/catalog/standards/sist/8d7d78aa-9fd1-4939-ad14-f1d8e1acecee/sist-en-13885-2005a1-2010](https://standards.iteh.ai/catalog/standards/sist/8d7d78aa-9fd1-4939-ad14-f1d8e1acecee/sist-en-13885-2005a1-2010)

**3.2 clip/closing element**

closing clamp out of metal or plastics in one- piece- or two-piece type

**3.3 clip guide**

feed-channel to the closure tool

**3.4 casing tubes****3.5 casing brake**

device for retaining and braking of the casing on the filling-tube

**3.6 string-/band-dispenser**

device for manufacturing of ring-sausages

**3.7 code device**

device for marking the packaged unit

**3.8****magazine**

receptacle to store the clips

**3.9****oil fog**

particles of oil in the waste air from cylinders and valves

**3.10****gathering**

folding of the casing

**3.11****loop**

at the tail fixed eye to hang up the package

**3.12****spread-removal**

device for gathering of the casing and making a free space for the clip

**3.13****punch and die**

closure tools

**3.14****dividing-knife**

fixed or movable knife for cutting the tail

**3.15****removal**

device for dividing the filling-product in the casing and making a non-product-place for setting of the clips

**3.16****tail**

gathered casing at the end of the package

**3.17****conveyance-channel**

channel for feeding the clips from the magazine to the closing-tools

**3.18****shirred casing**

pleated tubes

iTeh STANDARD PREVIEW  
(standards.iteh.ai)

SIST EN 13885:2005+A1:2010  
<https://standards.iteh.ai/catalog/standards/sist/8d7d78aa-9fd1-4939-ad14-f1d8e1acece/sist-en-13885-2005a1-2010>