



SLOVENSKI STANDARD
SIST EN 14033-3:2010/kFprA1:2011
01-julij-2011

Železniške naprave - Zgornji ustroj - Težka tirna mehanizacija za gradnjo in vzdrževanje - 3. del: Splošne varnostne zahteve

Railway applications - Track - Railbound construction and maintenance machines - Part 3: General safety requirements

Bahnanwendungen - Oberbau - Schienengebundene Bau- und Instandhaltungsmaschinen - Teil 3: Allgemeine Sicherheitsanforderungen

Applications ferroviaires - Voie - Machines de construction et de maintenance empruntant exclusivement les voies ferrées - Partie 3: Prescriptions générales pour la sécurité

Ta slovenski standard je istoveten z: EN 14033-3:2009/FprA1

ICS:

45.120	Oprema za gradnjo in vzdrževanje železnic oz. žičnic	Equipment for railway/cableway construction and maintenance
--------	------------------------------------------------------	-------------------------------------------------------------

SIST EN 14033-3:2010/kFprA1:2011 **en,fr,de**

EUROPEAN STANDARD
NORME EUROPÉENNE
EUROPÄISCHE NORM

FINAL DRAFT
EN 14033-3:2009

FprA1

May 2011

ICS 93.100

English Version

Railway applications - Track - Railbound construction and maintenance machines - Part 3: General safety requirements

Applications ferroviaires - Voie - Machines de construction et de maintenance empruntant exclusivement les voies ferrées - Partie 3: Prescriptions générales pour la sécurité

Bahnanwendungen - Oberbau - Schienengebundene Bau- und Instandhaltungsmaschinen - Teil 3: Allgemeine Sicherheitsanforderungen

This draft amendment is submitted to CEN members for unique acceptance procedure. It has been drawn up by the Technical Committee CEN/TC 256.

This draft amendment A1, if approved, will modify the European Standard EN 14033-3:2009. If this draft becomes an amendment, CEN members are bound to comply with the CEN/CENELEC Internal Regulations which stipulate the conditions for inclusion of this amendment into the relevant national standard without any alteration.

This draft amendment was established by CEN in three official versions (English, French, German). A version in any other language made by translation under the responsibility of a CEN member into its own language and notified to the CEN-CENELEC Management Centre has the same status as the official versions.

CEN members are the national standards bodies of Austria, Belgium, Bulgaria, Croatia, Cyprus, Czech Republic, Denmark, Estonia, Finland, France, Germany, Greece, Hungary, Iceland, Ireland, Italy, Latvia, Lithuania, Luxembourg, Malta, Netherlands, Norway, Poland, Portugal, Romania, Slovakia, Slovenia, Spain, Sweden, Switzerland and United Kingdom.

Recipients of this draft are invited to submit, with their comments, notification of any relevant patent rights of which they are aware and to provide supporting documentation.

Warning : This document is not a European Standard. It is distributed for review and comments. It is subject to change without notice and shall not be referred to as a European Standard.



EUROPEAN COMMITTEE FOR STANDARDIZATION
COMITÉ EUROPÉEN DE NORMALISATION
EUROPÄISCHES KOMITEE FÜR NORMUNG

Management Centre: Avenue Marnix 17, B-1000 Brussels

Contents

Page

Foreword.....	3
1 Modification to Clause 2, Normative references	4
2 Modification to Annex D	4
3 Modification to the Bibliography	7

Foreword

This document (EN 14033-3:2009/FprA1:2011) has been prepared by Technical Committee CEN/TC 256 "Railway applications", the secretariat of which is held by DIN.

This document is currently submitted to the Unique Acceptance Procedure.

This document has been prepared under a mandate given to CEN by the European Commission and the European Free Trade Association, and supports essential requirements of EU Directives.

For relationship with EU Directives, see informative Annexes ZA and ZB, which are integral parts of this document.

EN 14033, *Railway applications — Track — Railbound construction and maintenance machines*, consists of the following parts:

- *Part 1: Technical requirements for running*
- *Part 2: Technical requirements for working*
- *Part 3: General safety requirements*

EN 14033-3:2009/FprA1:2011 (E)

1 Modification to Clause 2, Normative references

Replace "prEN 14033-1:2008" with "EN 14033-1:2011" in Clause 2 and throughout the text.

2 Modification to Annex D

Replace Annex D with the following new Annex D: "

Annex D (informative)

Structure of European Standards for track construction and maintenance machines

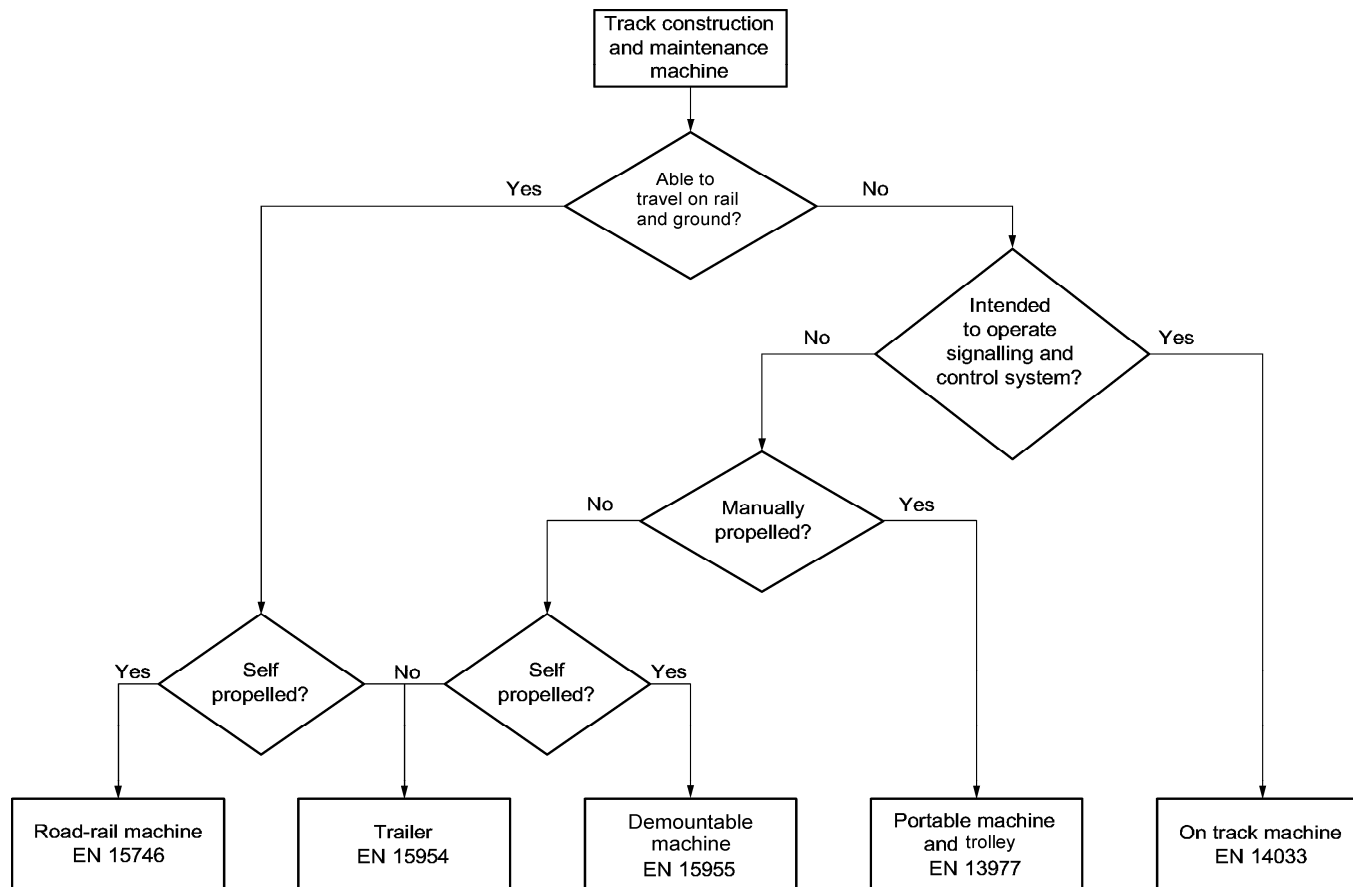


Figure D.1 — Flowchart of European Standards for track construction and maintenance machines

Table D.1 — Structure of European Standards for track construction and maintenance machines

<div style="text-align: right;">European Standard</div> <div style="text-align: left;">Specifications</div>	On track machine (Railbound machines) EN 14033-1:2011 EN 14033-2:2008 EN 14033-3:2009		Road-rail machine EN 15746-1:2010 EN 15746-2:2010		Demountable machine FprEN 15955-1:2011 FprEN 15955-2:2011	Trailer FprEN 15954-1:2011 FprEN 15954-2:2011	Portable machine and trolley EN 13977:2011
Designed for rail or road	rail only		rail and road		rail only	rail only or rail and road	rail only
Designed for operating train control / signalling systems	yes		yes ^c	no ^d	no	no	no
Method of propulsion on the rails	self propelled ^a	towed ^b	self propelled		self propelled	towed	manually
<p>^a Category 1, 2, 4 and 6 machines</p> <p>^b Category 3, 5 and 7 machines</p> <p>^c Category 8 machines as well as Category 9 machines designed to operate signalling and control systems</p> <p>^d Category 9 machines</p>							

..