

First edition  
2004-04-01

Corrected version  
2004-09-15

---

---

**Agricultural vehicles — Mechanical  
connections on towed vehicles —**

Part 1:  
**Dimensions for hitch rings of 50/30 mm  
cross section**

**iTeh STANDARD PREVIEW**  
*Véhicules agricoles — Liaisons mécaniques sur véhicules remorqués —  
(standards.iteh.ai) Partie 1: Dimensions des anneaux d'attelage de 50/30 mm de section*

ISO 5692-1:2004

<https://standards.iteh.ai/catalog/standards/sist/0b0af96c-99f9-4a48-b09f-8df21834c168/iso-5692-1-2004>



Reference number  
ISO 5692-1:2004(E)

© ISO 2004

**PDF disclaimer**

This PDF file may contain embedded typefaces. In accordance with Adobe's licensing policy, this file may be printed or viewed but shall not be edited unless the typefaces which are embedded are licensed to and installed on the computer performing the editing. In downloading this file, parties accept therein the responsibility of not infringing Adobe's licensing policy. The ISO Central Secretariat accepts no liability in this area.

Adobe is a trademark of Adobe Systems Incorporated.

Details of the software products used to create this PDF file can be found in the General Info relative to the file; the PDF-creation parameters were optimized for printing. Every care has been taken to ensure that the file is suitable for use by ISO member bodies. In the unlikely event that a problem relating to it is found, please inform the Central Secretariat at the address given below.

**iTeh STANDARD PREVIEW**  
**(standards.iteh.ai)**

ISO 5692-1:2004

<https://standards.iteh.ai/catalog/standards/sist/0b0af96c-99f9-4a48-b09f-8df21834c168/iso-5692-1-2004>

© ISO 2004

All rights reserved. Unless otherwise specified, no part of this publication may be reproduced or utilized in any form or by any means, electronic or mechanical, including photocopying and microfilm, without permission in writing from either ISO at the address below or ISO's member body in the country of the requester.

ISO copyright office  
Case postale 56 • CH-1211 Geneva 20  
Tel. + 41 22 749 01 11  
Fax + 41 22 749 09 47  
E-mail [copyright@iso.org](mailto:copyright@iso.org)  
Web [www.iso.org](http://www.iso.org)

Published in Switzerland

## Foreword

ISO (the International Organization for Standardization) is a worldwide federation of national standards bodies (ISO member bodies). The work of preparing International Standards is normally carried out through ISO technical committees. Each member body interested in a subject for which a technical committee has been established has the right to be represented on that committee. International organizations, governmental and non-governmental, in liaison with ISO, also take part in the work. ISO collaborates closely with the International Electrotechnical Commission (IEC) on all matters of electrotechnical standardization.

International Standards are drafted in accordance with the rules given in the ISO/IEC Directives, Part 2.

The main task of technical committees is to prepare International Standards. Draft International Standards adopted by the technical committees are circulated to the member bodies for voting. Publication as an International Standard requires approval by at least 75 % of the member bodies casting a vote.

Attention is drawn to the possibility that some of the elements of this document may be the subject of patent rights. ISO shall not be held responsible for identifying any or all such patent rights.

ISO 5692-1 was prepared by Technical Committee ISO/TC 23, *Tractors and machinery for agriculture and forestry*, Subcommittee SC 4, *Tractors*.

This first edition of ISO 5692-1, together with ISO 5692-2:2002 and ISO 20019:2001, cancels and replaces ISO 5692:1979, of which it constitutes a technical revision.

ISO 5692 consists of the following parts, under the general title *Agricultural vehicles — Mechanical connections on towed vehicles*:

- *Part 1: Dimensions for hitch rings of 50/30 mm cross section*
- *Part 2: Coupling ring 40 with socket*

This corrected version of ISO 5692-1 incorporates the following corrections.

- To the title has been added, for clarification, "... of 50/30 mm cross section."
- The Scope has been modified to reflect the change in title.
- Mention of ISO 20019 has been made in the Foreword.
- In Annex A, ISO 1102:1986 has been deleted as a reference in relation to ISO 6489-2:2002.

**iTeh STANDARD PREVIEW**  
**(standards.iteh.ai)**

ISO 5692-1:2004

<https://standards.iteh.ai/catalog/standards/sist/0b0af96c-99f9-4a48-b09f-8df21834c168/iso-5692-1-2004>

# Agricultural vehicles — Mechanical connections on towed vehicles —

## Part 1: Dimensions for hitch rings of 50/30 mm cross section

### 1 Scope

This part of ISO 5692 specifies the requirements for the attachment of agricultural non-balanced trailers and implements by means of hitch rings having a 50 mm hole centre and 30 mm ring diameter to the rear of a towing vehicle equipped with either a hook in accordance with ISO 6489-1 or a piton-type coupling as specified in ISO 6489-4. Its purpose is to ensure the interchangeability of mechanical connections on agricultural towed vehicles.

This part of ISO 5692 is applicable to rings whose coupling point is below the centre-line of the rear axle and below the power take-off (PTO) of the tractor.

NOTE Other International Standards are under development for rings coupled above the PTO.

### 2 Normative references

The following referenced documents are indispensable for the application of this document. For dated references, only the edition cited applies. For undated references, the latest edition of the referenced document (including any amendments) applies.

ISO 6489-1, *Agricultural vehicles — Mechanical connections between towed and towing vehicles — Part 1: Dimensions of hitch-hooks*

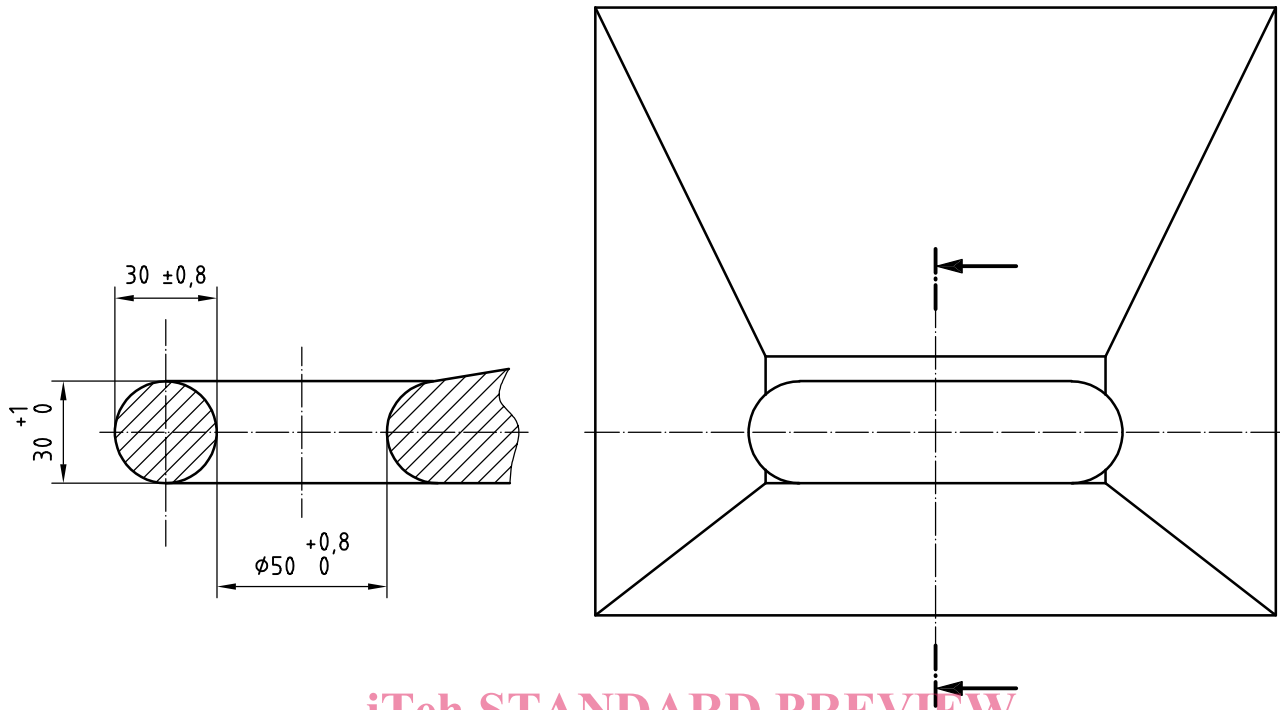
ISO 6489-4, *Agricultural vehicles — Mechanical connections between towed and towing vehicles — Part 4: Dimensions of piton-type coupling*

### 3 Interchangeability dimensions

#### 3.1 General

The hitch ring and the shank shall have the dimensions shown in Figures 1 and 2. Interchangeability is ensured provided that the attachment on the towing vehicle is in accordance with ISO 6489-1 or ISO 6489-4.

Dimensions in millimetres



**iTeh STANDARD PREVIEW**  
 (standards.iteh.ai)  
**Figure 1 — Hitch ring dimensions**

**3.2 Trailer shank travel angles**

ISO 5692-1:2004

<https://standards.iteh.ai/catalog/standards/sist/0b0af96c-99f9-4a48-b09f-8df21834c168/iso-5692-1-2004>

When the trailer shank fitted with the specified hitch ring is fixed to the tractor attachment, the shank shall be free to turn so that the angles formed with the horizontal situated in the tractor's plane of symmetry and passing through the coupling point have the following minimum values.

- a) Angle of yaw: rotation around a vertical axis passing through the coupling point, minimum value of 60° on both sides.
- b) Angle of pitch: rotation around a horizontal axis passing through the coupling point and perpendicular to the vehicle's longitudinal plane of symmetry, minimum value 20° top and bottom.

Allowance should be made for the towing vehicle being up to ± 3° from horizontal, due to front/rear tyre sizes.

- c) Angle of roll: rotation around a horizontal axis passing through the coupling point and located in the vehicle's plane of symmetry, minimum value 20° top and bottom.

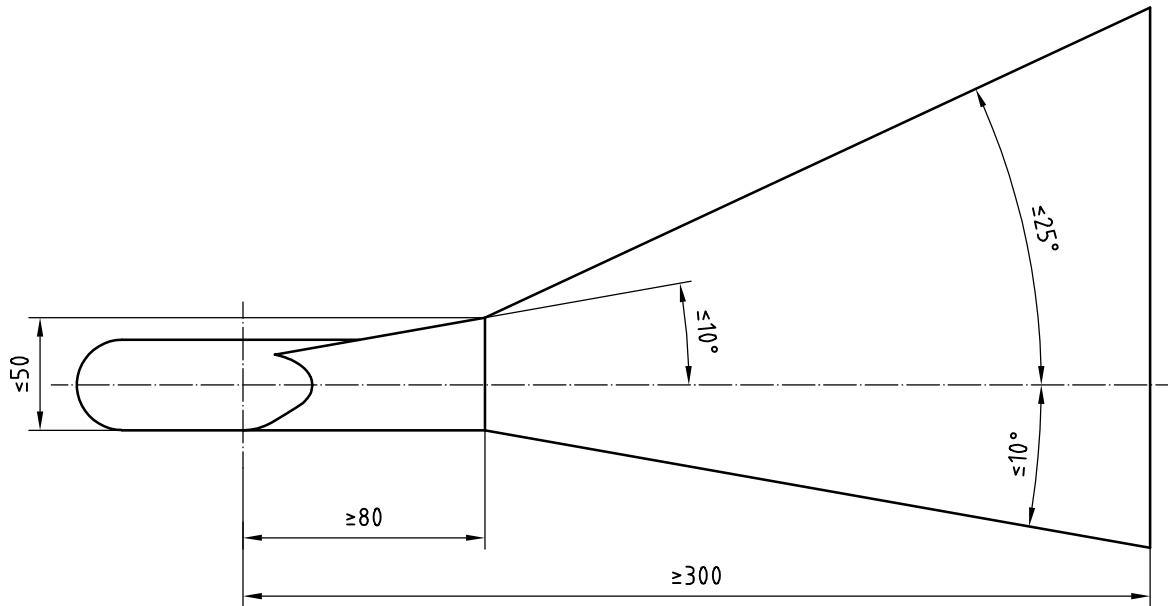
**4 Constructional requirements**

Hitch rings in accordance with this part of ISO 5692 shall be substantially toroidal and shall be manufactured by forging. Shanks shall be forged or machined or both.

The hitch ring shall be fixed on the shank. The hitch hook or piton-type coupling on the tractor shall be designed to allow the travel angles specified in 3.2.

In addition to these requirements relating to fixed hitch rings for towed vehicles, only the towed member (i.e. hitch ring and shank) shall have the option of providing rotational freedom of up to 360° around the shank's horizontal longitudinal axis (roll). Limitation of rotation away from the horizontal, or bias towards the hitch ring remaining horizontal, is optional.

Dimensions in millimetres



iTeh STANDARD PREVIEW  
(standards.iteh.ai)

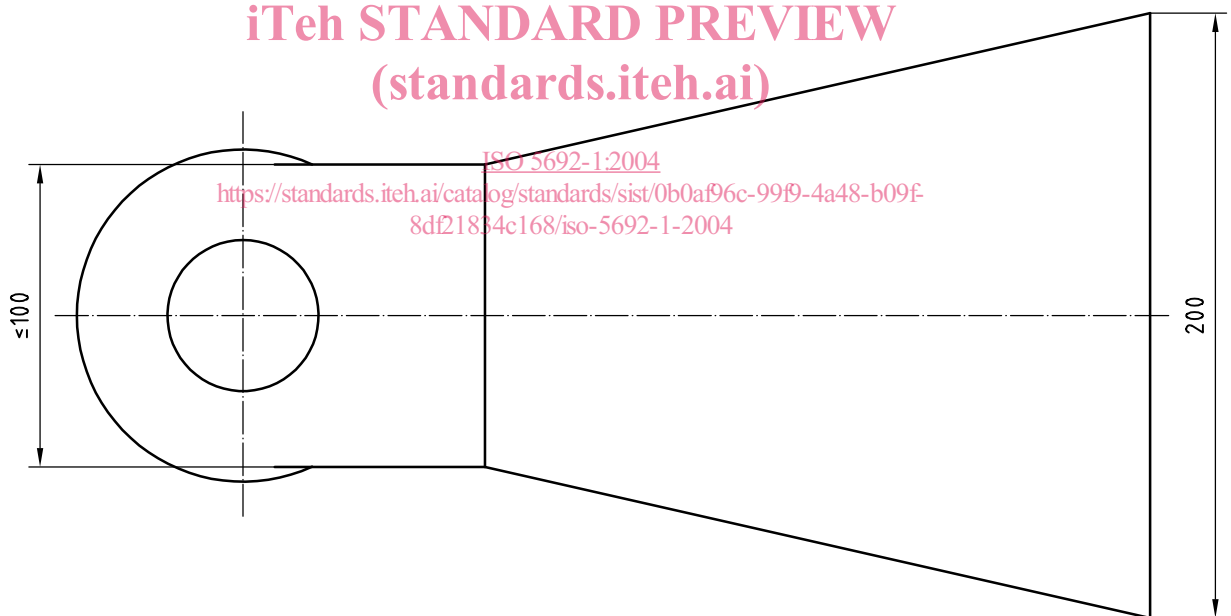


Figure 2 — Hitch shank dimensions

## Annex A (informative)

### Permissible mechanical connection combinations between towed and towing vehicles

Towing vehicle	Towed vehicle
ISO 6489-1:1991 hook type	ISO 5692:1979/ISO 5692-1:2004 hitch ring (50 mm hole centre, 30 mm ring diameter)
ISO 6489-1:2001 hook type <sup>a</sup>	ISO 5692:1979/ISO 5692-1:2004 hitch ring (50 mm hole centre, 30 mm ring diameter)
	ISO 20019:2001 hitch ring (50 mm hole centre, 30 mm to 41 mm ring diameter)
ISO 6489-2:2002 bolt type	ISO 5692-2:2002 coupling ring (40 mm socket)
	ISO 8755:1986 40 mm drawbar coupling <sup>b</sup>
ISO 6489-3:2004 drawbar (Cat 2)	ISO 5692:1979/ISO 5692-1:2004 hitch ring (50 mm hole centre, 30 mm ring diameter) <sup>c</sup>
	ISO 5692-2:2002 coupling ring (40 mm socket)
	ISO 8755:1986 40 mm drawbar coupling
	ISO 1102:1986 50 mm drawbar coupling <sup>c</sup>
ISO 6489-4:2004 piton type	ISO 5692:1979/ISO 5692-1:2004 hitch ring (50 mm hole centre, 30 mm ring diameter)
ISO 24347 <sup>d</sup> ball type	ISO 24347 <sup>d</sup> (80 mm ball diameter)
Only the combinations given above are recommended.	
<sup>a</sup> Connecting an ISO 6489-1:2001 hook, manufactured in accordance with the maximum sizes permitted, to hitch rings in accordance with ISO 5692-1 and of minimum dimensions (30 mm ring diameter) according to ISO 20019 could result in a "jerky" connection between the tractor and the trailer and result in less driving comfort.	
<sup>b</sup> Primarily used on trailers towed behind trucks (on-road).	
<sup>c</sup> Could result in a "jerky" connection between the tractor and the trailer and result in less driving comfort.	
<sup>d</sup> Under preparation.	



## Bibliography

- [1] ISO 1102:1986, *Commercial road vehicles — Mechanical connections between towing vehicles and trailers — 50 mm drawbar couplings*
- [2] ISO 5692:1979, *Agricultural vehicles — Mechanical connections on towed vehicles — Hitch-rings — Specifications*
- [3] ISO 5692-2:2002, *Agricultural vehicles — Mechanical connections on towed vehicles — Part 2: Coupling ring 40 with socket*
- [4] ISO 6489-1:1991, *Agricultural vehicles — Mechanical connections on towing vehicles — Part 1: Hook type*
- [5] ISO 6489-1:2001, *Agricultural vehicles — Mechanical connections between towed and towing vehicles — Part 1: Dimensions of hitch-hooks*
- [6] ISO 6489-2:2002, *Agricultural vehicles — Mechanical connections between towed and towing vehicles — Part 2: Specifications for clevis coupling 40*
- [7] ISO 6489-3:2004, *Agricultural vehicles — Mechanical connections between towed and towing vehicles — Part 3: Tractor drawbar*
- [8] ISO 6489-4:2004, *Agricultural vehicles — Mechanical connections between towed and towing vehicles — Part 4: Dimensions of piton-type coupling*
- [9] ISO 8755:1986, *Commercial road vehicles — Mechanical connections between towing vehicles and trailers — 40 mm drawbar coupling* [ISO 5692-1:2004](http://standards.iteh.ai/catalog/standards/sist/0b0af96c-99f9-4a48-b09f-8df21834c168/iso-5692-1-2004)
- [10] ISO 20019:2001, *Agricultural vehicles — Mechanical connections on towed vehicles — Dimensions for hitch rings* <http://standards.iteh.ai/catalog/standards/sist/0b0af96c-99f9-4a48-b09f-8df21834c168/iso-5692-1-2004>
- [11] ISO 24347, *Agricultural vehicles — Mechanical connections between towed and towing vehicles — Dimensions of ball-type coupling device (80 mm)*<sup>1)</sup>

1) Under preparation.