



SLOVENSKI STANDARD
oSIST prEN 1643:2012
01-december-2012

Sistemi za preskušanje samodejnih zapornih ventilov za plinske gorilnike in plinske aparate

Valve proving systems for automatic shut-off valves for gas burners and gas appliances

Ventilüberwachungssysteme für automatische Absperrventile für Gasbrenner und Gasgeräte

Systèmes de contrôle d'étanchéité pour robinets automatiques de sectionnement pour brûleurs et appareils à gaz

[SIST EN 1643:2014
https://standards.iteh.ai/catalog/standards/sist/23b097cb-b13d-4f7f-9475-760d055db7e/sist-en-1643-2014](https://standards.iteh.ai/catalog/standards/sist/23b097cb-b13d-4f7f-9475-760d055db7e/sist-en-1643-2014)

Ta slovenski standard je istoveten z: prEN 1643 rev

ICS:

23.060.20	Zapirni ventili (kroglasti in pipe)	Ball and plug valves
23.060.40	Tlačni regulatorji	Pressure regulators

oSIST prEN 1643:2012

en,fr,de

EUROPEAN STANDARD
NORME EUROPÉENNE
EUROPÄISCHE NORM

DRAFT
prEN 1643 rev

September 2012

ICS 23.060.20

Will supersede EN 1643:2000

English Version

Valve proving systems for automatic shut-off valves for gas burners and gas appliances

Systèmes de contrôle d'étanchéité pour robinets
automatiques de sectionnement pour brûleurs et appareils
à gaz

Ventilüberwachungssysteme für automatische
Absperrventile für Gasbrenner und Gasgeräte

This draft European Standard is submitted to CEN members for enquiry. It has been drawn up by the Technical Committee CEN/TC 58.

If this draft becomes a European Standard, CEN members are bound to comply with the CEN/CENELEC Internal Regulations which stipulate the conditions for giving this European Standard the status of a national standard without any alteration.

This draft European Standard was established by CEN in three official versions (English, French, German). A version in any other language made by translation under the responsibility of a CEN member into its own language and notified to the CEN-CENELEC Management Centre has the same status as the official versions.

CEN members are the national standards bodies of Austria, Belgium, Bulgaria, Croatia, Cyprus, Czech Republic, Denmark, Estonia, Finland, Former Yugoslav Republic of Macedonia, France, Germany, Greece, Hungary, Iceland, Ireland, Italy, Latvia, Lithuania, Luxembourg, Malta, Netherlands, Norway, Poland, Portugal, Romania, Slovakia, Slovenia, Spain, Sweden, Switzerland, Turkey and United Kingdom.

Recipients of this draft are invited to submit, with their comments, notification of any relevant patent rights of which they are aware and to provide supporting documentation.

Warning : This document is not a European Standard. It is distributed for review and comments. It is subject to change without notice and shall not be referred to as a European Standard.



EUROPEAN COMMITTEE FOR STANDARDIZATION
COMITÉ EUROPÉEN DE NORMALISATION
EUROPÄISCHES KOMITEE FÜR NORMUNG

Management Centre: Avenue Marnix 17, B-1000 Brussels

Contents

	Page
Foreword.....	5
1 Scope	5
2 Normative references	5
3 Terms and definitions	6
4 Classification.....	7
4.1 Classes of control.....	7
4.2 Groups of control.....	7
4.3 Classes of control functions	7
5 Units of measurement and test conditions	8
5.1 Dimensions.....	8
5.2 Pressures.....	8
5.3 Bending moments and torques.....	8
5.4 Test conditions and measurement tolerances	8
6 Construction requirements.....	8
6.1 General.....	8
6.2 Mechanical parts of the control.....	8
6.3 Materials	8
6.4 Gas connections	8
6.5 Electronic parts of the control.....	9
6.5.1 General.....	9
6.5.2 Protection provided by the enclosure	10
6.5.3 Electrical components	10
6.6 Protection against internal faults for the purpose of functional safety	10
6.6.1 Design and construction requirements.....	10
6.6.2 Class A.....	10
6.6.3 Class B.....	10
6.6.4 Class C.....	10
6.6.5 Circuit and construction evaluation	12
6.101 Additional constructional requirements for VPS systems	13
6.101.1 Signal for indication	13
6.101.2 VPS setting	13
7 Performance	13
7.1 General.....	13
7.2 Leak-tightness.....	13
7.3 Test for leak-tightness	14
7.3.1 General.....	14
7.3.2 External leak-tightness	14
7.3.3 Internal leak-tightness.....	14
7.4 Torsion and bending	14
7.5 Torsion and bending tests	14
7.6 Rated flow rate	14
7.7 Test for rated flow rate	14
7.8 Durability	14
7.9 Performance tests for electronic controls	14
7.10 Long-term performance for electronic controls	14
7.10.1 General.....	14
7.10.2 Stress test (by the test laboratory)	15
7.10.3 Long term performance test (by the manufacturer).....	15
7.101 Functional requirements	15
7.101.1 General.....	15

7.101.2	Programme sequence	15
7.101.3	Timing	16
7.101.4	Testing of the programme sequence and timing	16
7.101.5	Detection limit	17
7.101.6	Self-checking	17
7.101.7	Lock-out and reset device	17
8	EMC/Electrical requirements	17
8.1	Protection against environmental influences	17
8.2	Supply voltage variations below 85 % of rated voltage	18
8.3	Short-term voltage interruptions and decreases	18
8.4	Supply frequency variations	19
8.4.1	General	19
8.4.2	Variations of up to 2 %	19
8.4.3	Variations of between 2 % and 5 %	19
8.5	Surge immunity test	19
8.6	Electrical fast transient/burst	20
8.7	Immunity to conducted disturbances	20
8.8	Immunity to radiated fields	20
8.9	Electrostatic discharge immunity test	20
8.10	Power frequency magnetic field immunity test	21
8.11	Electrical requirements	21
9	Marking, installation and operating instructions	21
9.1	Marking	21
9.2	Installation and operating instructions	21
9.3	Warning notice	22
Annex A	(informative) Gas connections in common use in the various countries	23
Annex B	(informative) Leak-tightness test – Volumetric method	24
Annex C	(informative) Leak-tightness – Pressure loss method	25
Annex D	(normative) Conversion of pressure loss into leakage rate	26
Annex E	(normative) Electrical/electronic component fault modes	27
Annex F	(normative) Additional requirements for safety accessories and pressure accessories as defined in EU 97/23/EC	29
Annex G	(normative) Materials for pressurized parts	30
Annex H	(informative) Additional materials for pressurized parts	31
Annex I	(normative) Requirements for controls used in DC supplied fuel burners and fuel burning appliances	32
I.1	Scope	32
I.2	Thermal stress test	32
I.3	Long term performance test [by the manufacturer]	32
I.4	At ambient temperature	32
I.5	Supply voltage variations below 85 % of rated voltage	32
I.6	Short term voltage interruptions and decreases	32
I.7	Supply frequency, surge immunity, electrical fast transient/burst, electromagnetic conducted disturbances, power frequency magnetic field immunity test	32
I.8	Electrical transient conduction immunity for type B only	33
Annex AA	(informative) Application Guidance	34
AA.1	General	34
AA.2	Use of a valve proving system	34
Annex ZA	(informative) Relationship between this European Standard and the Essential Requirements of EU Directive 2009/142/EC relating to appliances burning gaseous fuels	35
Bibliography	37

prEN 1643:2012 (E)

Figures

Figure 1 — Illustration of detection limit and detection setting 7
Figure 2 — Examples of VPS configurations 14

Tables

Table EE.1 — Electrical/electronic component faults modes 27
Table ZA.1 — Correspondence between this European Standard and Directive 2009/142/EC relating to appliances burning gaseous fuels 35

iTeh STANDARD PREVIEW
(standards.iteh.ai)

SIST EN 1643:2014

<https://standards.iteh.ai/catalog/standards/sist/23b097cb-b13d-4f7f-9475-7fa0d055db7e/sist-en-1643-2014>

Foreword

This document (prEN 1643:2012) has been prepared by Technical Committee CEN/TC 58 "Safety and control devices for burners and appliances burning gaseous or liquid fuels", the secretariat of which is held by BSI.

This document is currently submitted to the CEN Enquiry.

This document will supersede EN 1643:2000.

This document has been prepared under a mandate given to CEN by the European Commission and the European Free Trade Association, and supports essential requirements of EU Directive(s).

For relationship with EU Directive(s), see informative Annex ZA, which is an integral part of this document.

For this European Standard a transition period of 3 years is proposed.

This document refers to Clauses of EN 13611:2007+A2:2011 or adapts it by stating "with the following modification", "with the following addition", "is replaced by the following" or "is not applicable" in the corresponding Clause. This Document adds Clauses or Sub-clauses to the structure of EN 13611:2007+A2:2011 which are particular to this standard, i.e. Sub-clauses or Annexes which are additional to those in EN 13611 are numbered starting from 101 or are designated as Annex AA, BB, CC etc. It should be noted that these Clauses and Sub-clauses are not indicated as an addition. If by reference to EN 13611 the term "control" is given, this term shall be read as "VPS".

Note that the following provides details of significant technical changes between this document and the previous edition:

- a) Alignment with EN 13611:2007+A2:2011;
- b) Integration of the requirements from ISO 23551-4.

1 Scope

This European Standard specifies safety, constructional and performance requirements of valve-proving systems, hereafter referred to as VPS, intended for use with gas burners and gas-burning appliances. It also describes the test procedures for checking compliance with these requirements and provides information necessary for the purchaser and user.

This European Standard applies to all types of VPS which are used for the automatic detection of leakage in a gas burner section having at least two valves designed in accordance with EN 161 and which give a signal if the leakage of one of the valves exceeds the detection limit.

This European Standard applies to VPSs with a declared maximum working pressure up to and including 500 kPa for use in systems using fuel gases of the 1st, 2nd or 3rd families.

This European Standard does not apply to VPSs for use in explosive atmospheres.

Provisions for production control are not part of this European Standard.

2 Normative references

The following documents, in whole or in part, are normatively referenced in this document and are indispensable for its application. For dated references, only the edition cited applies. For undated references, the latest edition of the referenced document (including any amendments) applies.

prEN 1643:2012 (E)

EN 161 *Automatic shut-off valves for gas burners and gas appliances*

EN 13611:2007+A2:2011, *Safety and control devices for gas burners and gas burning appliances — General requirements*

EN 1854 , *Pressure sensing devices for gas burners and gas burning appliances*

EN 60529:2001, *Degrees of protection provided by enclosures (IP Code)*

EN 60730-2-5:2010, *Automatic electrical controls for household and similar use — Part 2-5: Particular requirements for automatic electrical burner control systems*

IEC 60730-1:2010, *Automatic electrical controls for household and similar use — Part 1: General requirements*

3 Terms and definitions

For the purposes of this document, the terms and definitions given in EN 13611:2007+A2:2011 and the following apply.

3.101

valve proving system

VPS

system to check the effective closure of automatic shut-off valves by detecting leakage, that often consists of a programming unit, a measuring device, valves and other functional assemblies

3.102

VPS programming unit

unit which follows a predetermined sequence of valve proving actions

3.103

detecting device

device for direct or inferential detection of leakage, e.g. by measuring flow or pressure

3.104

VPS operational time

time taken by the VPS to perform its entire cycle of operation

3.105

detection limit

maximum amount of leakage that can occur before the VPS is required to give a signal

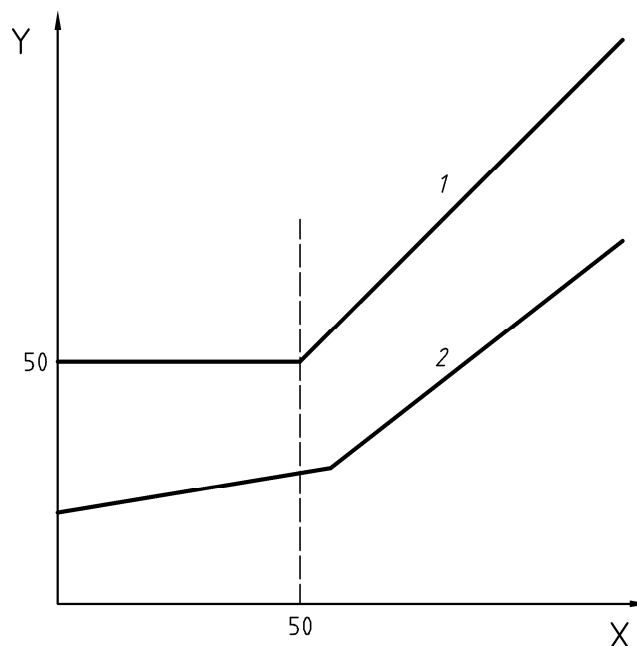
Note 1 to entry: See Figure 1.

3.106

detection setting

actual leakage rate setting specified by the manufacturer at which the VPS gives a signal

Note 1 to entry: See Figure 1.

**Key**

- X burner heat, gas flow, expressed in cubic metres per hour
 Y detected leakage rate, expressed in cubic decimetres per hour
 1 detection limit, see 3.105
 2 detection setting, see 3.106

Figure 1 — Illustration of detection limit and detection setting

3.107**leakage testing time**

time in which the VPS monitors a gas valve for leakage

3.108**volatile lock-out**

safety shut-down condition of the system, such that a restart can be accomplished only by either the manual reset of the system or an interruption of the main power and its subsequent restoration

3.109**non volatile lock-out**

safety shut-down condition of the system, such that a restart can be accomplished only by a manual reset of the system and by no other means

4 Classification**4.1 Classes of control**

EN 13611:2007+A2:2011, 4.1 is not applicable.

4.2 Groups of control

EN 13611:2007+A2:2011, 4.2 is not applicable.

4.3 Classes of control functions

Shall be according to EN 13611:2007+A2:2011, 4.3 with the following addition:

The valve proving system for automatic shut-off valves is a Class C control function.

prEN 1643:2012 (E)**5 Units of measurement and test conditions****5.1 Dimensions**

Shall be according to EN 13611:2007+A2:2011, 5.1.

5.2 Pressures

Shall be according to EN 13611:2007+A2:2011, 5.2.

5.3 Bending moments and torques

EN 13611:2007+A2:2011, 5.3 is not applicable.

5.4 Test conditions and measurement tolerances

Shall be according to EN 13611:2007+A2:2011, 5.4 with the following modification:

Add the following paragraph at the end of the Clause:

All tests are performed in the order written in this European Standard (i.e. EN 1643) except for that of 7.10 and 6.6.

6 Construction requirements**6.1 General**

EN 13611:2007+A2:2011, 6.1, applies, with the following addition.

The VPS shall be designed such that changes in critical circuit component values (such as those affecting timing or sequence) within the component manufacturer's declared worst case tolerances, including the long-term stability, shall result in the system continuing to function in accordance with this European Standard. Compliance shall be checked by worst-case analysis.

The construction of any additional functions included in the VPS for which no provisions exist in this European Standard shall be such that they do not degrade the safe and correct operation.

Where components are used to complete the VPS, these components shall comply with the relevant harmonized European controls Standard. Valves (e.g. for pressurizing and relieving the test section) integrated into the VPS functional sequence shall comply with EN 161 Class A, if not otherwise specified by a relevant appliance standard, and pressure-sensing devices, with EN 1854.

6.2 Mechanical parts of the control

Shall be according to EN 13611:2007+A2:2011, 6.2

6.3 Materials

Shall be according to EN 13611:2007+A2:2011, 6.3

6.4 Gas connections

Shall be according to EN 13611:2007+A2:2011, 6.4

6.5 Electronic parts of the control

6.5.1 General

Shall be according to EN 13611:2007+A2:2011, 6.5.1 with the following addition:

The construction of any additional functions included in the valve proving system, programming unit or flame detector device for which no provisions exist in this standard, shall be such that they do not degrade the safe and correct operation of the valve proving system.

Measures shall be taken to protect against failure of two (or more) switching elements, due to a common cause, by an external short circuit that would prevent the valve proving system from performing a safety shutdown.

Acceptable methods are current limitation, overcurrent protection device or internal fault detecting functions.

The suitability of measures to maintain the capability to interrupt the energization of the shut-off valve terminals by means of at least one switching element or a non-replaceable overcurrent protection device has been interrupted shall be verified by the following test.

The shut-off valve terminals of the valve proving system are connected to a switch that is intended to switch the short circuit current. With this switch opened, the valve proving system is connected as described in IEC 60730-1, H.27.1.1.2 with the outputs energized to simulate normal operation (contacts of the internal switching elements closed).

Where overcurrent protection device are used as the protective measure the power supply to the valve proving system shall have the capability of supplying an inrush current of at least 500 A. Where current limitation techniques are used the power supply to the valve proving system shall not limit the current.

A short-circuit is applied between the shut-off valve terminals of the valve proving system by closing the switch.

The test is terminated if there is no current flow through the switch, or after one hour.

If an overcurrent protection device is replaceable and has operated during the test it shall be replaced and the test is repeated two more times by attempting to restart the valve proving system keeping the switch closed.

A second test procedure is conducted in the same way, with the switch closed prior to the first start-up sequence; a second test sample can be used for this second test procedure.

If an internal fault detecting function of the valve proving system either opens the switching elements or initiates a safety shut-down the test is repeated two times while maintaining the external short circuit by attempting to restart the valve proving system.

Compliance is checked in accordance with IEC 60730-1, H.27.1.1.3 and Clause 15.

After the test at least one switching element of the valve proving system shall be able to de-energize the shut-off valve terminals, or a non-replaceable overcurrent protection device has permanently interrupted the supply to the shut-off valve terminals.

Designs where at least two relays are used as switching elements with independent contacts and in series with a non-replaceable fuse (see Table E.1, h) with $I_N < 0,6 \cdot I_e$, are considered to comply with the requirements for prevention of common cause error, without further testing.

NOTE I_N values for the fuse (see EN 60127-1:2006, 3.16).
 I_e : rated operational current of the contact (see EN 60947-1; 4.3.2.3).

prEN 1643:2012 (E)**6.5.2 Protection provided by the enclosure**

EN 13611:2007+A2:2011, 6.5.2 is replaced by the following:

The Class of protection for a system with its own enclosure shall be a minimum of IP 40 as specified in IEC 60529:2001 when installed in accordance with the manufacturer's instructions. For systems used in the open air, the protection shall conform to at least IP 54 when installed in accordance with the manufacturer's instructions. For systems without enclosure, equivalent protection shall be provided by the appliance in which it is installed.

6.5.3 Electrical components

Shall be according to EN 13611:2007+A2:2011, 6.5.3.

6.6 Protection against internal faults for the purpose of functional safety**6.6.1 Design and construction requirements****6.6.1.1 Fault avoidance and fault tolerance**

Shall be according to EN 13611:2007+A2:2011, 6.6.1.1.

6.6.1.2 Reset device

Shall be according to EN 13611:2007+A2:2011, 6.6.1.2 with the following modification:

The last paragraph shall be substituted by:

For remote reset functions EN 14459:2007 Annex J applies.

6.6.1.3 Documentation

Shall be according to EN 13611:2007+A2:2011, 6.6.1.3.

6.6.2 Class A

EN 13611:2007+A2:2011, 6.6.2 is not applicable.

6.6.3 Class B

EN 13611:2007+A2:2011, 6.6.3 is not applicable.

6.6.4 Class C**6.6.4.1 Design and construction requirements**

Shall be according to EN 13611:2007+A2:2011, 6.6.4.1 with the following modification:

Replace the second and third paragraph by the following:

At least the following states are defined as unsafe states:

- a) if during burner shut-down, the gas flow through a valve or by-passing valve is higher than the detection limit value of that valve except for the function of the VPS;
- b) if a test for leakage is outside the limits defined in 3.105 or 3.106;