



SLOVENSKI STANDARD

SIST EN 14420-8:2013

01-september-2013

Nadomešča:

SIST EN 14420-8:2005+A1:2007

Cevni fitingi z objemkami - 8. del: Simetrična spojka (sistem Guillemin)

Hose fittings with clamp units - Part 8: Symmetrical half coupling (Guillemin system)

Schlaucharmaturen mit Klemmfassungen - Teil 8: Symmetrische Kupplungen (System Guillemin)

iTeh STANDARD PREVIEW

Raccords pour flexibles avec demi-coquille - Partie 8: Demi raccords symétriques (système Guillemin)

[SIST EN 14420-8:2013](https://standards.iteh.ai/catalog/standards/sist/73a40264-396a-4bea-afb4-4141039f/sist-en-14420-8-2013)

<https://standards.iteh.ai/catalog/standards/sist/73a40264-396a-4bea-afb4-4141039f/sist-en-14420-8-2013>

Ta slovenski standard je istoveten z: EN 14420-8:2013

ICS:

23.040.60 Prirobnice, oglavki in spojni elementi Flanges, couplings and joints

SIST EN 14420-8:2013

en,fr,de

iTeh STANDARD PREVIEW
(standards.iteh.ai)

SIST EN 14420-8:2013

<https://standards.iteh.ai/catalog/standards/sist/73a40264-396a-4bea-afb4-10a7dd03039f/sist-en-14420-8-2013>

EUROPEAN STANDARD
NORME EUROPÉENNE
EUROPÄISCHE NORM

EN 14420-8

July 2013

ICS 23.040.70

Supersedes EN 14420-8:2004+A1:2007

English Version

Hose fittings with clamp units - Part 8: Symmetrical half coupling (Guillemin system)

Raccords pour flexibles avec demi-coquille - Partie 8: Demi
raccords symétriques (système Guillemin)

Schlaucharmaturen mit Klemmfassungen - Teil 8:
Symmetrische Kupplungen (System Guillemin)

This European Standard was approved by CEN on 15 May 2013.

CEN members are bound to comply with the CEN/CENELEC Internal Regulations which stipulate the conditions for giving this European Standard the status of a national standard without any alteration. Up-to-date lists and bibliographical references concerning such national standards may be obtained on application to the CEN-CENELEC Management Centre or to any CEN member.

This European Standard exists in three official versions (English, French, German). A version in any other language made by translation under the responsibility of a CEN member into its own language and notified to the CEN-CENELEC Management Centre has the same status as the official versions.

CEN members are the national standards bodies of Austria, Belgium, Bulgaria, Croatia, Cyprus, Czech Republic, Denmark, Estonia, Finland, Former Yugoslav Republic of Macedonia, France, Germany, Greece, Hungary, Iceland, Ireland, Italy, Latvia, Lithuania, Luxembourg, Malta, Netherlands, Norway, Poland, Portugal, Romania, Slovakia, Slovenia, Spain, Sweden, Switzerland, Turkey and United Kingdom.

[SIST EN 14420-8:2013](https://standards.iteh.ai/catalog/standards/sist/73a40264-396a-4bea-afb4-10a7dd03039f/sist-en-14420-8-2013)

<https://standards.iteh.ai/catalog/standards/sist/73a40264-396a-4bea-afb4-10a7dd03039f/sist-en-14420-8-2013>



EUROPEAN COMMITTEE FOR STANDARDIZATION
COMITÉ EUROPÉEN DE NORMALISATION
EUROPÄISCHES KOMITEE FÜR NORMUNG

Management Centre: Avenue Marnix 17, B-1000 Brussels

Contents	Page
Foreword.....	3
1 Scope	5
2 Normative references	5
3 Terms and definitions	6
4 Requirements	6
4.1 Pressures.....	6
4.2 Temperatures	6
5 Components	7
6 Dimensions.....	7
7 Types of connections	9
8 Designation	10
9 Materials	10
9.1 General.....	10
9.2 Coupling components.....	10
9.3 Main gaskets:	11
9.4 Thread gaskets:	11
10 Marking	11
11 Type testing and quality control	12
Annex A (normative) Gauge for symmetrical half couplings (Guillemin system).....	13
A.1 General.....	13
A.2 Dimensions, designation	13
A.3 Material	16
Bibliography	17

iTech STANDARD PREVIEW
(standards.iteh.ai)

[SIST EN 14420-8:2013](https://standards.iteh.ai/catalog/standards/sist/75a40204-596a-48ca-af04-10a7dd03039f/sist-en-14420-8-2013)

[https://standards.iteh.ai/catalog/standards/sist/75a40204-596a-48ca-af04-](https://standards.iteh.ai/catalog/standards/sist/75a40204-596a-48ca-af04-10a7dd03039f/sist-en-14420-8-2013)

[10a7dd03039f/sist-en-14420-8-2013](https://standards.iteh.ai/catalog/standards/sist/75a40204-596a-48ca-af04-10a7dd03039f/sist-en-14420-8-2013)

Foreword

This document (EN 14420-8:2013) has been prepared by Technical Committee CEN/TC 218 "Rubber and plastics hoses and hose assemblies", the secretariat of which is held by BSI.

This European Standard shall be given the status of a national standard, either by publication of an identical text or by endorsement, at the latest by January 2014, and conflicting national standards shall be withdrawn at the latest by January 2014.

Attention is drawn to the possibility that some of the elements of this document may be the subject of patent rights. CEN [and/or CENELEC] shall not be held responsible for identifying any or all such patent rights.

This document supersedes EN 14420-8:2004+A1:2007.

In comparison to EN 14420-8:2004+A1:2007, the following changes have been made:

- In Clause 2, the normative references have been updated.
- A new Clause 3 "Terms and definitions" has been added.
- Table 2 has been divided into a new Table 2 and Table 3.
- In 9.2, the list of materials for coupling components has been supplemented by cast and wrought aluminium alloys.
- The requirements on main gasket materials in 9.3 and thread gasket materials in 9.4 have been specified.
- In Clause 10, the requirements for marking have been reviewed.
- The Bibliography has been reviewed.
- The standard has been revised editorially.

EN 14420, *Hose fittings with clamp units* consists of the following parts:

- *Part 1: Requirements, types of fixing and connection, designation and testing*
- *Part 2: Hose side parts of hose tail*
- *Part 3: Clamp units, bolted or pinned*
- *Part 4: Flange connections*
- *Part 5: Threaded connections*
- *Part 6: TW tank truck couplings*
- *Part 7: Cam locking couplings*
- *Part 8: Symmetrical half coupling (Guillemin system)*

EN 14420-8:2013 (E)

According to the CEN-CENELEC Internal Regulations, the national standards organisations of the following countries are bound to implement this European Standard: Austria, Belgium, Bulgaria, Croatia, Cyprus, Czech Republic, Denmark, Estonia, Finland, Former Yugoslav Republic of Macedonia, France, Germany, Greece, Hungary, Iceland, Ireland, Italy, Latvia, Lithuania, Luxembourg, Malta, Netherlands, Norway, Poland, Portugal, Romania, Slovakia, Slovenia, Spain, Sweden, Switzerland, Turkey and the United Kingdom.

iTeh STANDARD PREVIEW (standards.iteh.ai)

SIST EN 14420-8:2013

<https://standards.iteh.ai/catalog/standards/sist/73a40264-396a-4bea-afb4-10a7dd03039f/sist-en-14420-8-2013>

1 Scope

This European Standard specifies dimensions, types of connections, quality of materials, marking requirements and testing requirements for hose fittings with symmetrical half couplings (Guillemin system), with mobile locking ring, for hose assemblies with a maximum working pressure of up to 10 bar¹⁾ with hose tails according to EN 14420-2 and clamp units according to EN 14420-3. Couplings in accordance with this document serve as link between hoses and connections to transport liquids, solids (e.g. powders, granules) except steam and liquid gas. The working temperature range is -20 °C up to $+65\text{ °C}$.

2 Normative references

The following documents, in whole or in part, are normatively referenced in this document and are indispensable for its application. For dated references, only the edition cited applies. For undated references, the latest edition of the referenced document (including any amendments) applies.

EN 573-3, *Aluminium and aluminium alloys — Chemical composition and form of wrought products — Part 3: Chemical composition and form of products*

EN 1706, *Aluminium and aluminium alloys — Castings — Chemical composition and mechanical properties*

EN 1982, *Copper and copper alloys — Ingots and castings*

EN 10083-2, *Steels for quenching and tempering — Part 2: Technical delivery conditions for non alloy steels*

EN 10088-1, *Stainless steels — Part 1: List of stainless steels*

EN 10213 *Steel castings for pressure purposes*

EN 14420-1:2013, *Hose fittings with clamp units — Part 1: Requirements, types of fixing and connection, designation and testing*

EN 14420-2, *Hose fittings with clamp units — Part 2: Hose side parts of hose tail*

EN 14420-3, *Hose fittings with clamp units — Part 3: Clamp units, bolted or pinned*

EN 14420-4, *Hose fittings with clamp units — Part 4: Flange connections*

EN 14420-5, *Hose fittings with clamp units — Part 5: Threaded connections*

EN 22768-1, *General tolerances — Part 1: Tolerances for linear and angular dimensions without individual tolerance indications (ISO 2768-1)*

EN 22768-2, *General tolerances — Part 2: Geometrical tolerances for features without individual tolerance indications (ISO 2768-2)*

EN ISO 228-1, *Pipe threads where pressure-tight joints are not made on the threads — Part 1: Dimensions, tolerances and designation (ISO 228-1)*

EN ISO 8330:2008, *Rubber and plastics hoses and hose assemblies — Vocabulary (ISO 8330:2007)*

1) 1 bar = 0,1 MPa.

EN 14420-8:2013 (E)**3 Terms and definitions**

For the purposes of this document, the terms and definitions given in EN ISO 8330:2008 and the following apply.

3.1 DN (nominal size)
alphanumeric designation of size for components of a pipework system, which is used for reference purposes. It comprises the letters DN followed by a dimensionless whole number which is indirectly related to the physical size, in millimetres, of the bore or outside diameter of the end connections.

Note 1 to entry: The number following the letters DN does not represent a measurable value and should not be used for calculation purposes except where specified in the relevant standard.

Note 2 to entry: In those standards which use the DN designation system, any relationship between DN and component dimensions should be given, e.g. DN/OD or DN/ID.

[SOURCE: EN ISO 6708:1995, 2.1]

3.2 main gasket
interface gasket between the male and female part of a coupling

3.3 thread gasket
flat faced gasket for threads according to EN ISO 228-1

iTeh STANDARD PREVIEW
(standards.iteh.ai)

4 Requirements

SIST EN 14420-8:2013
<https://standards.iteh.ai/catalog/standards/sist/73a40264-396a-4bea-afb4-10a7dd03039f/sist-en-14420-8-2013>

4.1 Pressures

Symmetrical half-couplings (Guillemin system), with mobile locking-ring, shall resist to the following pressures:

- a) Maximum working pressure = 16 bar;
- b) Test pressure = 24 bar;
- c) Minimum burst pressure = 48 bar.

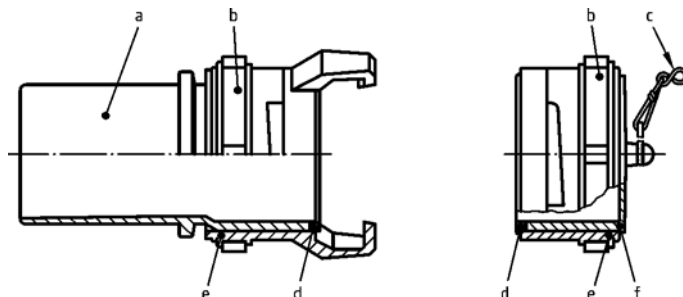
NOTE 1 bar = 0,1 MPa.

4.2 Temperatures

The range of working temperatures of couplings equipped with nitrile butadiene rubber gasket (NBR-gasket) is -20 °C to +65 °C.

5 Components

Figure 1 shows a coupling with hose tail (Type SGD) and a plug (Type SGB) as samples.



Key

- a hose tail
- b locking ring
- c chain
- d main gasket
- e retainer ring
- f body of plug

Figure 1 — Coupling with hose tail (Type SGD) and plug (Type SGB)

6 Dimensions

General dimensions are given in Figure 2 and Table 1.

Details which are not fixed shall be chosen by the manufacturer.

For gauges see Annex A.