
**Industrial automation systems and
integration — Product data
representation and exchange —**

Part 218:

Application protocol: Ship structures

*Systèmes d'automatisation industrielle et intégration — Représentation
et échange de données de produits —*

Partie 218: Protocole d'application: Structures de navires

Document Preview

[ISO 10303-218:2004](https://standards.iso.org/iso/10303-218:2004)

<https://standards.iso.org/iso/10303-218:2004>



Reference number
ISO 10303-218:2004(E)

PDF disclaimer

This PDF file may contain embedded typefaces. In accordance with Adobe's licensing policy, this file may be printed or viewed but shall not be edited unless the typefaces which are embedded are licensed to and installed on the computer performing the editing. In downloading this file, parties accept therein the responsibility of not infringing Adobe's licensing policy. The ISO Central Secretariat accepts no liability in this area.

Adobe is a trademark of Adobe Systems Incorporated.

Details of the software products used to create this PDF file can be found in the General Info relative to the file; the PDF-creation parameters were optimized for printing. Every care has been taken to ensure that the file is suitable for use by ISO member bodies. In the unlikely event that a problem relating to it is found, please inform the Central Secretariat at the address given below.

iTeh Standards
(<https://standards.iteh.ai>)
Document Preview

[ISO 10303-218:2004](https://standards.iteh.ai/catalog/standards/iso/da00f284-501e-4ca6-9089-a5bc6ea9e944/iso-10303-218-2004)

<https://standards.iteh.ai/catalog/standards/iso/da00f284-501e-4ca6-9089-a5bc6ea9e944/iso-10303-218-2004>

© ISO 2004

All rights reserved. Unless otherwise specified, no part of this publication may be reproduced or utilized in any form or by any means, electronic or mechanical, including photocopying and microfilm, without permission in writing from either ISO at the address below or ISO's member body in the country of the requester.

ISO copyright office
Case postale 56 • CH-1211 Geneva 20
Tel. + 41 22 749 01 11
Fax + 41 22 749 09 47
E-mail copyright@iso.org
Web www.iso.org

Published in Switzerland

Contents	Page
1 Scope	1
2 Normative references	3
3 Terms, definitions and abbreviated terms	5
3.1 Terms defined in ISO 10303-1	5
3.2 Terms defined in ISO 10303-21	6
3.3 Terms defined in ISO 10303-31	6
3.4 Terms defined in ISO 10303-41	6
3.5 Terms defined in ISO 10303-42	7
3.6 Terms defined in ISO 10303-43	8
3.7 Terms defined in ISO 10303-216	9
3.8 Other terms and definitions	10
3.9 Abbreviated terms	17
4 Information requirements	19
4.1 Units of functionality	19
4.1.1 class_approvals	20
4.1.2 configuration_management	21
4.1.3 definitions	22
4.1.4 design_loads	23
4.1.5 external_references	23
4.1.6 hull_class_applicability	24
4.1.7 hull_cross_sections	24
4.1.8 items	25
4.1.9 library_reference	25
4.1.10 location_concepts	26
4.1.11 product_structures	27
4.1.12 shapes	27
4.1.13 ship_general_characteristics	28
4.1.14 ship_manufacturing_definitions	29
4.1.15 ship_material_properties	30
4.1.16 ship_measures	30
4.1.17 structural_features	30
4.1.18 structural_parts	32
4.1.19 structural_systems	34
4.1.20 welds	35
4.2 Application objects	36
4.3 Application assertions	290
5 Application interpreted model	319
5.1 Mapping specification	319
5.2 AIM EXPRESS short listing	879
6 Conformance requirements	1307
Annex A (normative) AIM EXPRESS expanded listing	1321

ISO 10303-218:2004(E)

Annex B (normative) AIM short names	1606
Annex C (normative) Implementation method specific requirements	1615
Annex D (normative) Protocol Implementation Conformance Statement (PICS) proforma	1616
Annex E (normative) Information object registration	1619
Annex F (informative) Application activity model	1620
Annex G (informative) Application reference model	1660
Annex H (informative) EXPRESS-G Diagrams	1710
Annex J (informative) Computer interpretable listings	1739
Annex K (informative) Application protocol usage guide	1740
Annex L (informative) Technical discussions	1741
L.1 Introduction	1741
L.2 The ship common model	1743
L.3 Key concepts of ship structures	1746
L.4 Globally unambiguous identifier usage	1755
L.5 AIM units for each measure type	1760
Bibliography	1765
Index	1766

Figures

Figure 1 — Shipbuilding application protocols	xi
Figure 2 — Data planning model	xii
Figure 3 — Angle_bar_cross_section	37
Figure 4 — Assembly	42
Figure 5 — Bending moment	46
Figure 6 — Bevel_design_definition	50
Figure 7 — Bulbflat_cross_section	52
Figure 8 — One side butt weld	53
Figure 9 — Both sides butt weld	54
Figure 10 — Circular cutout	65
Figure 11 — Composite features on plate part	71
Figure 12 — Composite features on profile part	72
Figure 13 — Corrugated part parameters	75
Figure 14 — Corrugated system parameters	78
Figure 15 — Corrugated bulkhead	81
Figure 16 — Design_still_water_bending_moment	84
Figure 17 — Drain_hole_cutout	89

Figure 18 — Drain_hole_cutout shape	90
Figure 19 — Elliptical_cutout	96
Figure 20 — Elongated_oval_cutout	97
Figure 21 — Flat_bar_cross_section	106
Figure 22 — Global axis placement	111
Figure 23 — Groove weld types	112
Figure 24 — Double bottom of a bulk carrier	117
Figure 25 — Hull cross section of a cargo ship	118
Figure 26 — Hull cross section of a bulk carrier	119
Figure 27 — Inward_round_corner_cutout	132
Figure 28 — Local coordinate system	140
Figure 29 — Outward_round_corner_cutout	149
Figure 30 — Part edge cutout	156
Figure 31 — Part ID locations for various Profile_cross_sections	157
Figure 32 — Examples of part edge cutout shapes	157
Figure 33 — Profile design of a simple profile	171
Figure 34 — Profile design using curve_on_surface geometry for trace line	172
Figure 35 — Profile design with declination angle	173
Figure 36 — Profile design using twist	173
Figure 37 — Rectangular_cutback_corner_cutout	184
Figure 38 — Round_corner_rectangular_cutout	188
Figure 39 — Shear_bevel_design_definition	193
Figure 40 — Spacing positions	199
Figure 41 — Plate cutouts	206
Figure 42 — Profile cutouts	207
Figure 43 — Deck	211
Figure 44 — Bulkhead	212
Figure 45 — Double bottom as section	224
Figure 46 — Double bottom	224
Figure 47 — Structural_system	225
Figure 48 — Single bottom	234
Figure 49 — Deck in three dimensions	236
Figure 50 — Double bottom in two dimensions	236
Figure 51 — Shell	238
Figure 52 — Fore ship in two dimensions	240
Figure 53 — Fore ship in three dimensions	241
Figure 54 — Bow	242
Figure 55 — Bilge keel	244
Figure 56 — Longitudinal girder	245
Figure 57 — Tank	248
Figure 58 — Web frame	250
Figure 59 — T bar cross section	255
Figure 60 — Weld examples	266
Figure 61 — Weld positions	273
Figure 62 — Weld distortion	276
Figure 63 — Weld methods	277
Figure 64 — Weld procedures	278
Figure 65 — Weld types	282
Figure 66 — Weld sequence	286

ISO 10303-218:2004(E)

Figure F.1 — IDEF0 Basic notation	1620
Figure F.2 — Node A-0: Describe ship life cycle	1637
Figure F.3 — Node A0: Perform ship life cycle	1638
Figure F.4 — Node A1: Specify ship	1639
Figure F.5 — A12: Prepare bid	1640
Figure F.6 — A122: Create preliminary design	1641
Figure F.7 — Node A2: Complete and approve ship design	1642
Figure F.8 — Node A24: Complete design of ship structure	1643
Figure F.9 — Node A241: Design ship structure	1644
Figure F.10 — Node A2412: Create design of classification items	1645
Figure F.11 — Node A24121: Design of transverse structure	1646
Figure F.12 — Node A242: Approve design of ship structure	1647
Figure F.13 — Node A2424: Check global strength and secondary structure	1648
Figure F.14 — Node A243: Elaborate ship structure design	1649
Figure F.15 — Node A2434: Make hull detail design	1650
Figure F.16 — Node A24341: Design secondary structure	1651
Figure F.17 — Node A24342: Handle plates	1652
Figure F.18 — Node A24343: Handle profiles	1653
Figure F.19 — Node A244: Make production design of ship structure	1654
Figure F.20 — Node A2442: Create production documents	1655
Figure F.21 — Node A2443: Refine working information	1656
Figure F.22 — Node A3: Produce and inspect a ship	1657
Figure F.23 — Node A34: Test a ship	1658
Figure F.24 — Node A4: Operate and maintain a ship	1659
Figure G.1 — ARM EXPRESS-G diagram 1 of 49	1661
Figure G.2 — ARM EXPRESS-G diagram 2 of 49	1662
Figure G.3 — ARM EXPRESS-G diagram 3 of 49	1663
Figure G.4 — ARM EXPRESS-G diagram 4 of 49	1664
Figure G.5 — ARM EXPRESS-G diagram 5 of 49	1665
Figure G.6 — ARM EXPRESS-G diagram 6 of 49	1666
Figure G.7 — ARM EXPRESS-G diagram 7 of 49	1667
Figure G.8 — ARM EXPRESS-G diagram 8 of 49	1668
Figure G.9 — ARM EXPRESS-G diagram 9 of 49	1669
Figure G.10 — ARM EXPRESS-G diagram 10 of 49	1670
Figure G.11 — ARM EXPRESS-G diagram 11 of 49	1671
Figure G.12 — ARM EXPRESS-G diagram 12 of 49	1672
Figure G.13 — ARM EXPRESS-G diagram 13 of 49	1673
Figure G.14 — ARM EXPRESS-G diagram 14 of 49	1674
Figure G.15 — ARM EXPRESS-G diagram 15 of 49	1675
Figure G.16 — ARM EXPRESS-G diagram 16 of 49	1676
Figure G.17 — ARM EXPRESS-G diagram 17 of 49	1677
Figure G.18 — ARM EXPRESS-G diagram 18 of 49	1678
Figure G.19 — ARM EXPRESS-G diagram 19 of 49	1679
Figure G.20 — ARM EXPRESS-G diagram 20 of 49	1680
Figure G.21 — ARM EXPRESS-G diagram 21 of 49	1681
Figure G.22 — ARM EXPRESS-G diagram 22 of 49	1682
Figure G.23 — ARM EXPRESS-G diagram 23 of 49	1683
Figure G.24 — ARM EXPRESS-G diagram 24 of 49	1684
Figure G.25 — ARM EXPRESS-G diagram 25 of 49	1685

Figure G.26 — ARM EXPRESS-G diagram 26 of 49	1686
Figure G.27 — ARM EXPRESS-G diagram 27 of 49	1687
Figure G.28 — ARM EXPRESS-G diagram 28 of 49	1688
Figure G.29 — ARM EXPRESS-G diagram 29 of 49	1689
Figure G.30 — ARM EXPRESS-G diagram 30 of 49	1690
Figure G.31 — ARM EXPRESS-G diagram 31 of 49	1691
Figure G.32 — ARM EXPRESS-G diagram 32 of 49	1692
Figure G.33 — ARM EXPRESS-G diagram 33 of 49	1693
Figure G.34 — ARM EXPRESS-G diagram 34 of 49	1694
Figure G.35 — ARM EXPRESS-G diagram 35 of 49	1695
Figure G.36 — ARM EXPRESS-G diagram 36 of 49	1696
Figure G.37 — ARM EXPRESS-G diagram 37 of 49	1697
Figure G.38 — ARM EXPRESS-G diagram 38 of 49	1698
Figure G.39 — ARM EXPRESS-G diagram 39 of 49	1699
Figure G.40 — ARM EXPRESS-G diagram 40 of 49	1700
Figure G.41 — ARM EXPRESS-G diagram 41 of 49	1701
Figure G.42 — ARM EXPRESS-G diagram 42 of 49	1702
Figure G.43 — ARM EXPRESS-G diagram 43 of 49	1703
Figure G.44 — ARM EXPRESS-G diagram 44 of 49	1704
Figure G.45 — ARM EXPRESS-G diagram 45 of 49	1705
Figure G.46 — ARM EXPRESS-G diagram 46 of 49	1706
Figure G.47 — ARM EXPRESS-G diagram 47 of 49	1707
Figure G.48 — ARM EXPRESS-G diagram 48 of 49	1708
Figure G.49 — ARM EXPRESS-G diagram 49 of 49	1709
Figure H.1 — AIM diagram 1 of 28 in EXPRESS-G	1711
Figure H.2 — AIM diagram 2 of 28 in EXPRESS-G	1712
Figure H.3 — AIM diagram 3 of 28 in EXPRESS-G	1713
Figure H.4 — AIM diagram 4 of 28 in EXPRESS-G	1714
Figure H.5 — AIM diagram 5 of 28 in EXPRESS-G	1715
Figure H.6 — AIM diagram 6 of 28 in EXPRESS-G	1716
Figure H.7 — AIM diagram 7 of 28 in EXPRESS-G	1717
Figure H.8 — AIM diagram 8 of 28 in EXPRESS-G	1718
Figure H.9 — AIM diagram 9 of 28 in EXPRESS-G	1719
Figure H.10 — AIM diagram 10 of 28 in EXPRESS-G	1720
Figure H.11 — AIM diagram 11 of 28 in EXPRESS-G	1721
Figure H.12 — AIM diagram 12 of 28 in EXPRESS-G	1722
Figure H.13 — AIM diagram 13 of 28 in EXPRESS-G	1723
Figure H.14 — AIM diagram 14 of 28 in EXPRESS-G	1724
Figure H.15 — AIM diagram 15 of 28 in EXPRESS-G	1725
Figure H.16 — AIM diagram 16 of 28 in EXPRESS-G	1726
Figure H.17 — AIM diagram 17 of 28 in EXPRESS-G	1727
Figure H.18 — AIM diagram 18 of 28 in EXPRESS-G	1728
Figure H.19 — AIM diagram 19 of 28 in EXPRESS-G	1729
Figure H.20 — AIM diagram 20 of 28 in EXPRESS-G	1730
Figure H.21 — AIM diagram 21 of 28 in EXPRESS-G	1731
Figure H.22 — AIM diagram 22 of 28 in EXPRESS-G	1732
Figure H.23 — AIM diagram 23 of 28 in EXPRESS-G	1733
Figure H.24 — AIM diagram 24 of 28 in EXPRESS-G	1734
Figure H.25 — AIM diagram 25 of 28 in EXPRESS-G	1735

ISO 10303-218:2004(E)

Figure H.26 — AIM diagram 26 of 28 in EXPRESS-G	1736
Figure H.27 — AIM diagram 27 of 28 in EXPRESS-G	1737
Figure H.28 — AIM diagram 28 of 28 in EXPRESS-G	1738
Figure L.1 — Ship product model	1741
Figure L.2 — Ship life cycle	1743
Figure L.3 — SCM framework	1744
Figure L.4 — Subtypes of items for ship structures	1747
Figure L.5 — Subtypes of definitions for ship structures	1747
Figure L.6 — Subtypes of Design_definition for ship structures	1749
Figure L.7 — Corrugated part model	1750
Figure L.8 — Corrugated system model	1751
Figure L.9 — Hierarchy of feature design definitions	1753

Tables

Table 1 — Conformance classes - Early design & class approval	1309
Table 2 — Conformance classes - Detail design	1310
Table 3 — Conformance classes - Manufacturing	1311
Table 4 — Conformance class - Class approval	1312
Table 5 — Conformance class elements	1313
Table 6 — Units used in AIM	1761

(<https://standards.iteh.ai>)

Document Preview

[ISO 10303-218:2004](https://standards.iteh.ai/catalog/standards/iso/da00f284-501c-4ca6-9089-a5bc6ea9e944/iso-10303-218-2004)

<https://standards.iteh.ai/catalog/standards/iso/da00f284-501c-4ca6-9089-a5bc6ea9e944/iso-10303-218-2004>

Foreword

ISO (the International Organization for Standardization) is a worldwide federation of national standards bodies (ISO member bodies). The work of preparing International Standards is normally carried out through ISO technical committees. Each member body interested in a subject for which a technical committee has been established has the right to be represented on that committee. International organizations, governmental and non-governmental, in liaison with ISO, also take part in the work. ISO collaborates closely with the International Electrotechnical Commission (IEC) on all matters of electrotechnical standardization.

International Standards are drafted in accordance with the rules given in the ISO/IEC Directives, Part 2.

Draft International Standards adopted by the technical committees are circulated to the member bodies for voting. Publication as an International Standard requires approval by at least 75 % of the member bodies casting a vote.

Attention is drawn to the possibility that some of the elements of this part of ISO 10303 may be the subject of patent rights. ISO is not to be held responsible for identifying any or all such patent rights.

ISO 10303-218 was prepared by Technical Committee ISO TC 184, *Industrial automation systems and integration*, Subcommittee SC 4, *Industrial data*.

ISO 10303 is organized as a series of parts, each published separately. The structure of ISO 10303 is described in ISO 10303-1.

Each part of ISO 10303 is a member of one of the following series: description methods, implementation methods, conformance testing methodology and framework, integrated generic resources, integrated application resources, application protocols, abstract test suites, application interpreted constructs, and application modules. This part is a member of the application protocol series.

A complete list of parts of ISO 10303 is available from the Internet:

`<http://www.tc184-sc4.org/titles/>`

Introduction

ISO 10303 is an International Standard for the computer-interpretable representation of product information and for the exchange of product data. The objective is to provide a neutral mechanism capable of describing products throughout their life cycle. This mechanism is suitable not only for neutral file exchange, but also as a basis for implementing and sharing product databases, and as a basis for archiving.

This part of ISO 10303 is a member of the application protocol series. This part of ISO 10303 specifies an application protocol (AP) for the definition of ship structures and its related data.

This application protocol defines the context, scope and information requirements for the communication of ship structural data and specifies the integrated resources necessary to satisfy these requirements. This part of ISO 10303 is one of a series of ship building application protocols, that together aim to provide an integrated computer interpretable product model for ships.

The series of shipbuilding industry application protocols assumes that the ship product model can be divided into separate ship systems; each covering a key element of the ship for its whole life cycle. These key elements are:

- ship arrangements;
- ship moulded forms;
- ship distribution systems.

NOTE 1 Distribution systems include piping, heating, ventilation and air conditioning, hydraulics, pneumatics, electrical, and cable way.

- ship structures;
- ship mechanical systems.

NOTE 2 Mechanical systems include cargo handling, machinery and propulsion.

- ship outfit and furnishings;
- combat systems;
- communication;
- navigation;
- operation.

Each separate system is described by one or more different application protocols. The full series of shipbuilding application protocols is depicted in Figure 1. Those aspects of the ship product model that are common to each ship application protocol are described consistently and identically in each application protocol. Within the series of shipbuilding application protocols this part of ISO 10303 details the key element of ship structures.

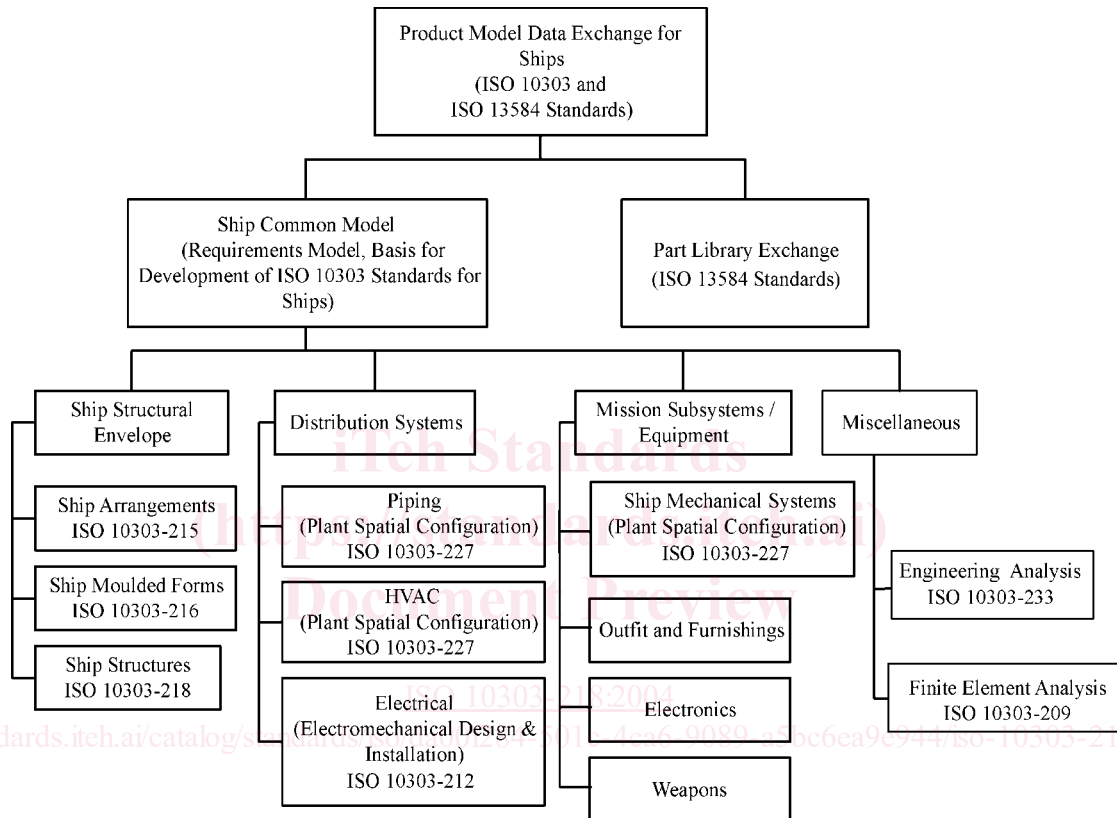


Figure 1 — Shipbuilding application protocols

This part of ISO 10303 specifies an application protocol for the exchange of product data representing a ship structures information. These data may needed to be exchanged or shared between different organizations. Such organizations include ship owners, ship classification societies, design agencies and fabricators. This AP has been developed to support the shipbuilding activities and computer applications associated with the pre-design, the main design, the manufacturing, the maintenance (repair), and the inspection and survey during operation life cycle phases for commercial or naval ships.

Figure 2 illustrates how the ship structures information may be grouped under the following:

- ship common model;
- ship common utilities;
- ship structures;

ISO 10303-218:2004(E)

- manufacturing of ship structures;
- class approvals;
- shape representations.

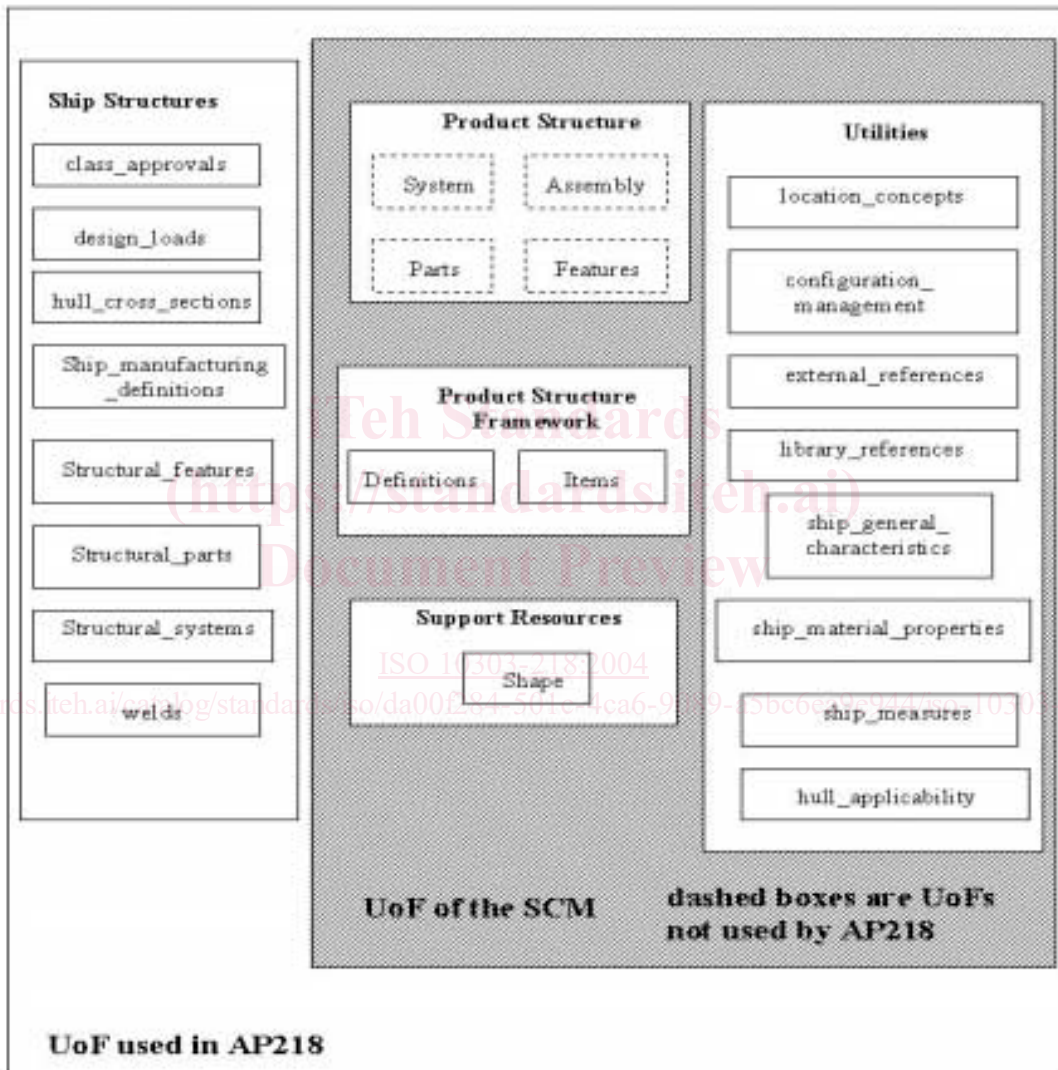


Figure 2 — Data planning model

The unit of functionality (UoF) for ship common model (SCM) specifies the shipbuilding common model which is used for all ship building APs (currently for AP215, AP216, and AP218). The SCM is considered to present the framework of Shipbuilding application protocols. The ship common model UoFs are the basis for the design and manufacturing of ship structures.

The group of UoFs labeled utilities provides the information for configuration management, location concepts, basic geometry and others, which is used by all shipbuilding application protocols.

The group of UoFs labeled ship structures describes the design definition of ship structures during the pre-design and design phase of a ship, the manufacturing definitions of ship structures during the manufacturing phase of a ship, and approvals of the structural parts and hull cross-sections of the ship.

The group of UoFs labeled product definition framework provides the key part of the Ship Common Model and provides general concepts of how to relate things, how to define their properties and how to represent them.

The group of UoFs labeled product structure provides different levels of structuring a product mainly by space, by assembly or by system in a general manner.

The group of UoFs labeled support resources provides all the STEP integrated resources (ISO 10303-41, 42, 43, 44, and 45) used in shipbuilding APs.

Application protocols provide the basis for developing implementations of ISO 10303 and abstract test suites for the conformance testing of AP implementations.

Clause 1 defines the scope of the application protocol and summarizes the functionality and data covered by the AP. Clause 3 lists the words defined in this part of ISO 10303 and gives pointers to words defined elsewhere. An application activity model that is the basis for the definition of the scope is provided in annex F. The information requirements of the application are specified in clause 4 using terminology appropriate to the application. A graphical representation of the information requirements, referred to as the application reference model, is given in annex G. The detailed technical discussion in annex L provides details that define the basis for the definition of the scope of this part of ISO 10303 and details that define the basis of harmonization with other parts of ISO 10303 for product exchange of data for ships.

Resource constructs are interpreted to meet the information requirements. This interpretation produces the application interpreted model (AIM). This interpretation, given in clause 5.1, shows the correspondence between the information requirements and the AIM. The short listing of the AIM specifies the interface to the integrated resources and is given in clause 5.2. Note that the definitions and EXPRESS provided in the integrated resources for constructs used in the AIM may include select list items and subtypes which are not imported into the AIM. The expanded listing given in annex A contains the complete EXPRESS for the AIM without annotation. A graphical representation of the AIM is given in annex H. Additional requirements for specific implementation methods are given in annex C.

