



SLOVENSKI STANDARD

SIST EN 1870-12:2014

01-marec-2014

Nadomešča:

SIST EN 1870-12:2004+A1:2009

Varnost lesnoobdelovalnih strojev - Krožne žage - 12. del: Nihalne krožne žage za prečni rez

Safety of woodworking machines - Circular sawing machines - Part 12: Pendulum cross-cut sawing machines

Sicherheit von Holzbearbeitungsmaschinen - Kreissägemaschinen - Teil 12: Pendelkreissägemaschinen

Sécurité des machines pour le travail du bois - Machines à scies circulaires - Partie 12: Tronçonneuses pendulaires

Ta slovenski standard je istoveten z: EN 1870-12:2013

ICS:

25.080.60	Strojne žage	Sawing machines
79.120.10	Lesnoobdelovalni stroji	Woodworking machines

SIST EN 1870-12:2014

en,fr,de

iTeh STANDARD PREVIEW
(standards.iteh.ai)

[SIST EN 1870-12:2014](#)

<https://standards.iteh.ai/catalog/standards/sist/acaf3da2-f13a-498c-8a4c-5f9e0d9fe075/sist-en-1870-12-2014>

EUROPEAN STANDARD

EN 1870-12

NORME EUROPÉENNE

EUROPÄISCHE NORM

October 2013

ICS 79.120.10

Supersedes EN 1870-12:2003+A1:2009

English Version

Safety of woodworking machines - Circular sawing machines - Part 12: Pendulum cross-cut sawing machines

Sécurité des machines pour le travail du bois - Machines à
scies circulaires - Partie 12: Tronçonneuses pendulaires

Sicherheit von Holzbearbeitungsmaschinen -
Kreissägemaschinen - Teil 12: Pendelkreissägemaschinen

This European Standard was approved by CEN on 21 September 2013.

CEN members are bound to comply with the CEN/CENELEC Internal Regulations which stipulate the conditions for giving this European Standard the status of a national standard without any alteration. Up-to-date lists and bibliographical references concerning such national standards may be obtained on application to the CEN-CENELEC Management Centre or to any CEN member.

This European Standard exists in three official versions (English, French, German). A version in any other language made by translation under the responsibility of a CEN member into its own language and notified to the CEN-CENELEC Management Centre has the same status as the official versions.

CEN members are the national standards bodies of Austria, Belgium, Bulgaria, Croatia, Cyprus, Czech Republic, Denmark, Estonia, Finland, Former Yugoslav Republic of Macedonia, France, Germany, Greece, Hungary, Iceland, Ireland, Italy, Latvia, Lithuania, Luxembourg, Malta, Netherlands, Norway, Poland, Portugal, Romania, Slovakia, Slovenia, Spain, Sweden, Switzerland, Turkey and United Kingdom.

[SIST EN 1870-12:2014](https://standards.iteh.ai/catalog/standards/sist/aca3da2-f13a-498c-8a4c-5f9e0d9fe075/sist-en-1870-12-2014)

<https://standards.iteh.ai/catalog/standards/sist/aca3da2-f13a-498c-8a4c-5f9e0d9fe075/sist-en-1870-12-2014>



EUROPEAN COMMITTEE FOR STANDARDIZATION
COMITÉ EUROPÉEN DE NORMALISATION
EUROPÄISCHES KOMITEE FÜR NORMUNG

CEN-CENELEC Management Centre: Avenue Marnix 17, B-1000 Brussels

Contents

Page

Foreword.....	4
Introduction	6
1 Scope	7
2 Normative references	7
3 Terms and definitions	9
4 List of significant hazards	11
5 Safety requirements and/or measures	14
5.1 General.....	14
5.2 Controls	14
5.2.1 General.....	14
5.2.2 Position of controls	15
5.2.3 Starting	17
5.2.4 Normal stopping	18
5.2.5 Emergency stop.....	19
5.2.6 Workpiece positioning	19
5.2.7 Mode selection	19
5.2.8 Failure of the power supply	20
5.2.9 Failure of the control circuits	20
5.3 Protection against mechanical hazards	20
5.3.1 Stability	20
5.3.2 Risk of break up during operation	21
5.3.3 Saw blade fixing and spindle design	21
5.3.4 Braking.....	22
5.3.5 Measures to minimise the possibility or effect of ejection	23
5.3.6 Workpiece supports and guides	23
5.3.7 Prevention of access to moving parts.....	25
5.3.8 Clamping devices	29
5.4 Protection against non-mechanical hazards	29
5.4.1 Fire	29
5.4.2 Noise	30
5.4.3 Emission of chips and dust	31
5.4.4 Electricity	31
5.4.5 Ergonomics and handling.....	32
5.4.6 Pneumatics.....	32
5.4.7 Hydraulics.....	33
5.4.8 Electromagnetic compatibility.....	33
5.4.9 Laser	33
5.4.10 Static electricity	33
5.4.11 Errors of Fitting.....	33
5.4.12 Supply disconnection (Isolation)	33
5.4.13 Maintenance	34
6 Information for use	34
6.1 General.....	34
6.2 Warning devices	34
6.3 Marking	35
6.4 Instruction handbook	35
Annex A (normative) Impact test method for guards	39
A.1 General.....	39

A.2	Test method	39
A.2.1	Preliminary remarks	39
A.2.2	Testing equipment.....	39
A.2.3	Projectile for guards.....	39
A.2.4	Sampling.....	39
A.2.5	Test procedure.....	40
A.3	Results.....	40
A.4	Assessment	40
A.5	Test report.....	40
A.6	Test equipment for impact test	40
Annex B	(normative) Braking tests	42
B.1	Conditions for all tests.....	42
B.2	Tests	42
B.2.1	Run-up time.....	42
B.2.2	Un-braked run-down time.....	42
B.2.3	Braked run-down time.....	42
Annex C	(normative) Dimensional tolerances of saw spindles	43
Annex ZA	(informative) Relationship between this European Standard and the Essential Requirements of EU Directive 2006/42/EC.....	44
Bibliography	45

iTeh STANDARD PREVIEW (standards.iteh.ai)

SIST EN 1870-12:2014

<https://standards.iteh.ai/catalog/standards/sist/acaf3da2-f13a-498c-8a4c-5f9e0d9fc075/sist-en-1870-12-2014>

EN 1870-12:2013 (E)**Foreword**

This document (EN 1870-12:2013) has been prepared by Technical Committee CEN/TC 142 "Woodworking machines - Safety", the secretariat of which is held by UNI.

This European Standard shall be given the status of a national standard, either by publication of an identical text or by endorsement, at the latest by April 2014 and conflicting national standards shall be withdrawn at the latest by April 2014.

Attention is drawn to the possibility that some of the elements of this document may be the subject of patent rights. CEN [and/or CENELEC] shall not be held responsible for identifying any or all such patent rights.

This document supersedes EN 1870-12:2003+A1:2009.

This document has been prepared under a mandate given to CEN by the European Commission and the European Free Trade Association, and supports essential requirements of the Machinery Directive.

For relationship with EU Directive, see informative Annex ZA, which is an integral part of this document.

EN 1870 *Safety of woodworking machines — Circular sawing machines* consists of the following parts:

Part 1: Circular saw benches (with and without sliding table), dimension saws and building site saws

Part 3: Down cutting cross-cut saws and dual purpose down cutting cross-cut saws/circular saw benches

Part 4: Multi blade rip sawing machines with manual loading and/or unloading

Part 5: Circular saw benches/up-cutting cross-cut sawing machines

Part 6: Circular sawing machines for firewood and dual purpose circular sawing machines for firewood/circular saw benches, with manual loading and/or unloading

Part 7: Single blade log sawing machines with integrated feed table and manual loading and/or unloading

Part 8: Single blade edging circular rip sawing machines with power driven saw unit and manual loading and/or unloading

Part 9: Double blade circular sawing machines for cross-cutting with integrated feed and with manual loading and/or unloading

Part 10: Single blade automatic and semi-automatic up-cutting cross-cut sawing machines

Part 11: Semi-automatic horizontal cross-cut sawing machines with one saw unit (radial arm saws)

Part 12: Pendulum cross-cut sawing machines

Part 13: Horizontal beam panel sawing machines

Part 14: Vertical panel sawing machines

Part 15: Multi blade cross-cut sawing machines with integrated feed of the workpiece and manual loading and/or unloading

Part 16: Double mitre sawing machines for V-cutting

Part 17: Manual horizontal cutting cross-cut sawing machines with one saw unit (manual radial arm saws)

Part 18: Dimension saws

Part 19: Circular saw benches (with and without sliding table) and building site saws

The following technical modifications have been introduced during the revision:

- deletion of automatic machines;
- deletion of displaceable machines;
- introduction of PL;
- more precise requirements for access for saw blade change;
- more precise requirements for braking;
- addition of provisions to prevent saw unit accelerating or lifting-up during cutting.

Organisations contributing to the preparation of this European Standard include European Committee of Woodworking Machinery Manufacturers Association "EUMABOIS".

The European Standards produced by CEN/TC 142 are particular to woodworking machines and complement the relevant A and B Standards on the subject of general safety (see introduction of EN ISO 12100:2010 for a description of A, B and C standards).

According to the CEN/CENELEC Internal Regulations, the national standards organisations of the following countries are bound to implement this European Standard: Austria, Belgium, Bulgaria, Croatia, Cyprus, Czech Republic, Denmark, Estonia, Finland, Former Yugoslav Republic of Macedonia, France, Germany, Greece, Hungary, Iceland, Ireland, Italy, Latvia, Lithuania, Luxembourg, Malta, Netherlands, Norway, Poland, Portugal, Romania, Slovakia, Slovenia, Spain, Sweden, Switzerland, Turkey and the United Kingdom.

EN 1870-12:2013 (E)**Introduction**

This document has been prepared to be a harmonised standard to provide one means of conforming to the essential safety requirements of the Machinery Directive, and associated EFTA regulations.

This document is a type "C" standard as defined in EN ISO 12100:2010.

The machinery concerned and the extent to which hazards, hazardous situations and events are covered are indicated in the scope of this document.

When provisions of this type C standard are different from those which are stated in type A or B standards, the provisions of this C type standard take precedence over the provisions of other standards, for machines that have been designed and built according to the provisions of this type C standard.

The requirements of this document are directed to manufacturers and their authorised representatives of pendulum cross-cut sawing machines. It is also useful for designers.

This document also includes information which can be provided by the manufacturer to the user.

Common requirements for tooling are given in EN 847-1:2005+A1:2007.

iTeh STANDARD PREVIEW
(standards.iteh.ai)

SIST EN 1870-12:2014

<https://standards.iteh.ai/catalog/standards/sist/acaf3da2-f13a-498c-8a4c-5f9e0d9fe075/sist-en-1870-12-2014>

1 Scope

This European Standard deals with all significant hazards, hazardous situations and events as listed in Clause 4 which are relevant to pendulum cross-cut sawing, herein after referred to as 'machines', designed to cut solid wood, chipboard, fibreboard, plywood and also these materials when covered with plastic edging and/or plastic/light alloy laminates when they are used as intended and under the conditions foreseen by the manufacturer including reasonably foreseeable misuse.

This European Standard does not apply to:

- a) machines for cross cutting logs;
- b) machines where the saw unit can be rotated about a horizontal axis.

NOTE The requirements of this European Standard apply to all machines whatever their method of control e.g. electromechanical and/or electronic.

This European Standard is primarily directed at machines which are manufactured after the date of its publication as EN.

2 Normative references

The following documents, in whole or in part, are normatively referenced in this document and are indispensable for its application. For dated references, only the edition cited applies. For undated references, the latest edition of the referenced document (including any amendments) applies.

EN 574:1996+A1:2008, *Safety of machinery — Two-hand control devices — Functional aspects — Principles for design*

SIST EN 1870-12:2014

<https://standards.iteh.ai/catalog/standards/sist/aca3da2-f13a-498c-8a4c->

EN 614-1:2006+A1:2009, *Safety of machinery — Ergonomic design principles — Part 1: Terminology and general principles*

EN 847-1:2005+A1:2007, *Tools for woodworking — Safety requirements — Part 1: Milling tools, circular saw blades*

EN 894-1:1997+A1:2008, *Safety of machinery — Ergonomics requirements for the design of displays and control actuators — Part 1: General principles for human interactions with displays and control actuators*

EN 894-2:1997+A1:2008, *Safety of machinery — Ergonomics requirements for the design of displays and control actuators — Part 2: Displays*

EN 894-3:2000+A1:2008, *Safety of machinery — Ergonomics requirements for the design of displays and control actuators — Part 3: Control actuators*

EN 1005-1:2001+A1:2008, *Safety of machinery — Human physical performance — Part 1: Terms and definitions*

EN 1005-2:2003+A1:2008, *Safety of machinery — Human physical performance — Part 2: Manual handling of machinery and component parts of machinery*

EN 1005-3:2002+A1:2008, *Safety of machinery — Human physical performance — Part 3: Recommended force limits for machinery operation*

EN 1005-4:2005+A1:2008, *Safety of machinery — Human physical performance — Part 4: Evaluation of working postures and movements in relation to machinery*

EN 1870-12:2013 (E)

EN 1037:1995+A1:2008, *Safety of machinery — Prevention of unexpected start-up*

EN 1088:1995+A2:2008, *Safety of machinery — Interlocking devices associated with guards — Principles for design and selection*

EN 50370-1:2005, *Electromagnetic compatibility (EMC) — Product family standard for machine-tools — Part 1: Emission*

EN 50370-2:2003, *Electromagnetic compatibility (EMC) — Product family standard for machine-tools — Part 2: Immunity*

EN 60204-1:2006, *Safety of machinery — Electrical equipment of machines — Part 1: General requirements (IEC 60204-1:2005, modified)*

EN 60439-1:1999¹⁾, *Low-voltage switchgear and controlgear assemblies — Part 1: Type-tested and partially type-tested assemblies (IEC 60439-1:1999)*

EN 60529:1991²⁾, *Degrees of protection provided by enclosures (IP code) (IEC 60529:1989)*

EN 60825-1:2007, *Safety of laser products — Part 1: Equipment classification and requirements (IEC 60825-1:2007)*

EN 61310-1:2008, *Safety of machinery — Indication, marking and actuation — Part 1: Requirements for visual, acoustic and tactile signals (IEC 61310-1:2007)*

CLC/TS 61496-2:2006, *Safety of machinery — Electrosensitive protective equipment — Part 2: Particular requirements for equipment using active opto-electronic protective devices (AOPDs) (IEC 61496-2:2006)*

EN 61800-5-2:2007, *Adjustable speed electrical power drive systems — Part 5-2: Safety requirements — Functional (IEC 61800-5-2:2007)*

EN ISO 3743-1:2010, *Acoustics — Determination of sound power levels and sound energy levels of noise sources using sound pressure — Engineering methods for small, moveable sources in reverberant fields — Part 1: Comparison method for hard-walled test room (ISO 3743-1:2010)*

EN ISO 3743-2:2009, *Acoustics — Determination of sound power levels of noise sources using sound pressure — Engineering methods for small, moveable sources in reverberant fields — Part 2: Methods for special reverberation test rooms (ISO 3743-2:1994)*

EN ISO 3744:2010, *Acoustics — Determination of sound power levels and sound energy levels of noise sources using sound pressure — Engineering methods for an essentially free field over a reflecting plane (ISO 3744:2010)*

EN ISO 3745:2012, *Acoustics — Determination of sound power levels and sound energy levels of noise sources using sound pressure — Precision methods for anechoic and hemi-anechoic rooms (ISO 3745:2012)*

EN ISO 3746:2010, *Acoustics — Determination of sound power levels and sound energy levels of noise sources using sound pressure — Survey method using an enveloping measurement surface over a reflecting plane (ISO 3746:2010)*

EN ISO 4413:2010, *Hydraulic fluid power — General rules and safety requirements for systems and their components (ISO 4413:2010)*

¹⁾ EN 60439-1:1999 is impacted by EN 60439-1:1999/A1:2004.

²⁾ EN 60529:1991 is impacted by EN 60529:1991/A1:2000.

EN ISO 4414:2010, *Pneumatic fluid power — General rules and safety requirements for systems and their components (ISO 4414:2010)*

EN ISO 4871:2009, *Acoustics — Declaration and verification of noise emission values of machinery and equipment (ISO 4871:1996)*

EN ISO 9614-1:2009, *Acoustics — Determination of sound power levels of noise sources using sound intensity – Part 1: Measurements at discrete points (ISO 9614-1:1993)*

EN ISO 11202:2010, *Acoustics — Noise emitted by machinery and equipment — Determination of emission sound pressure levels at a work station and at other specified positions applying approximate environmental corrections (ISO 11202:2010)*

EN ISO 11204:2010, *Acoustics — Noise emitted by machinery and equipment — Determination of emission sound pressure levels at a work station and at other specified positions applying accurate environmental corrections (ISO 11204:2010)*

EN ISO 11688-1:2009, *Acoustics — Recommended practice for the design of low-noise machinery and equipment – Part 1: Planning (ISO/TR 11688-1:1995)*

EN ISO 12100:2010, *Safety of machinery — General principles for design — Risk assessment and risk reduction (ISO 12100:2010)*

EN ISO 13849-1:2008, *Safety of machinery — Safety-related parts of control systems — Part 1: General principles for design (ISO 13849-1:2006)*

EN ISO 13850:2008, *Safety of machinery — Emergency stop — Principles for design (ISO 13850:2006)*

EN ISO 13856-1:2013, *Safety of machinery — Pressure-sensitive protective devices — Part 1: General principles for design and testing of pressure-sensitive mats and pressure-sensitive floors (ISO 13856-1:2013)*

EN ISO 13856-2:2013, *Safety of machinery — Pressure-sensitive protective devices — Part 2: General principles for design and testing of pressure-sensitive edges and pressure-sensitive bars (ISO 13856-2:2013)*

EN ISO 13857:2008, *Safety of machinery — Safety distances to prevent hazard zones being reached by upper and lower limbs (ISO 13857:2008)*

ISO 7960:1995, *Airborne noise emitted by machine tools — Operating conditions for woodworking machines*

HD 22.1 S4:2002, *Cables of rated voltages up to and including 450/750 V and having cross-linked insulation — Part 1: General requirements*

3 Terms and definitions

For the purposes of this document, the terms and definitions given in EN ISO 12100:2010 and the following apply.

3.1

cross-cutting

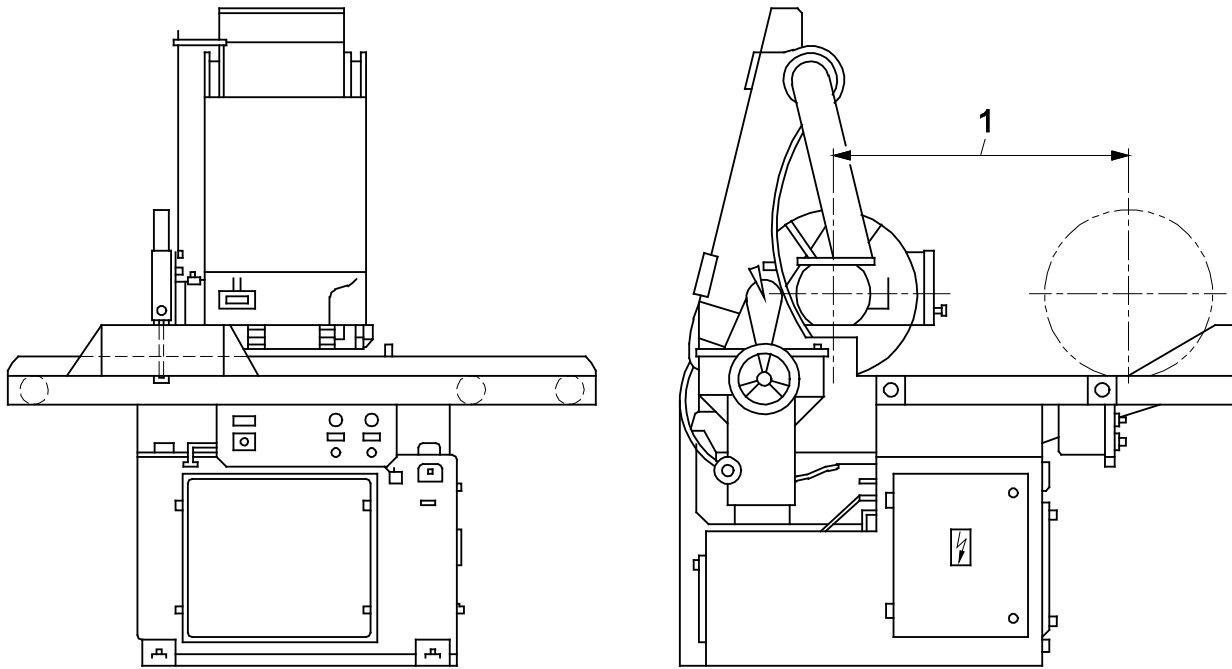
operation of cutting across the grain of a wooden workpiece

3.2

pendulum cross-cut sawing machine

machine to carry out cross cuts by moving the saw unit for the cutting stroke across the work piece manually or by integrated feed and after the cut back to its starting (rest) position

EN 1870-12:2013 (E)

**Key**

1 stroke

Figure 1 — Example of a pendulum cross-cut sawing machine

iTech STANDARD PREVIEW
(standards.itech.ai)

3.3 manual pendulum cross-cut sawing machine
machine to carry out cross cuts by moving the saw unit for the cutting stroke manually and where the work piece has to be positioned manually at the fence

3.4 semi-automatic pendulum cross-cut sawing machine
machine to carry out cross cuts with integrated feed, by loading and/or unloading the work piece manually and positioning manually the work piece for cutting to length

3.5 stationary machine
machine designed to be located on or fixed to the floor or other parts of the structure of the premises and to be stationary during use

3.6 displaceable machine
machine which is located on the floor, stationary during use and equipped with a device, normally wheels, which allow it to be moved between locations

3.7 machine actuator
power mechanism used to effect motion of the machine

3.8 hand feed on pendulum cross-cut sawing machines
manual holding and/or guiding of the workpiece or the manual guiding of the saw unit with the saw blade

3.9 integrated feed
feed mechanism for the workpiece or tool which is integrated with the machine and where the workpiece or

machine element with incorporated tool are held and controlled mechanically during the machining operation

3.10

cutting area of the saw blade

area where the saw blade can be involved in the cutting process

3.11

non-cutting area of the saw blade

area of the saw blade where the saw blade is not involved in the cutting process

3.12

cutting area of a pendulum cross-cut sawing machine

area in front of the fence which is limited by the machine to carry out the cross cuts by using a saw blade with the maximum diameter for which the machine is designed

3.13

run-up time

time elapsed from the actuation of the start control device until the spindle reaches the intended speed

3.14

un-braked run-down time

time elapsed from the actuation of the stop control, but not the braking device (if fitted) up to spindle standstill

3.15

braked run-down time

time elapsed from the actuation of the stop control and the brake device up to spindle standstill

3.16

manual loading of power fed machines

operation where the workpiece is presented by the operator directly to the machine integrated feed, e.g. rotating feed rollers, travelling table or reciprocating carriage; i.e. for which there is no intermediate loading device to receive and transfer the workpiece from the operator to the integrated feed

3.17

manual unloading of power fed machines

operation where the workpiece is removed by the operator directly from the machine outfeed; i.e. for which there is no intermediate unloading device to receive and transfer the workpiece from the machine outfeed to the operator

3.18

information from the supplier

statements, sales literature, leaflets or other documents where a manufacturer (supplier) declares either the characteristics of e.g. a material or product or the compliance of the material or product to a relevant standard

3.19

performance level (PL)

discrete level used to specify the ability of safety-related parts of control systems to perform a safety function under foreseeable condition

[SOURCE: EN ISO 13849-1:2008, 3.1.23]

4 List of significant hazards

This clause contains all significant hazards, hazardous situations and events (see EN ISO 12100:2010), identified by risk assessment as significant for the machines as defined in the scope and which require action to eliminate or reduce the risk. This document deals with these significant hazards by defining safety requirements and/or measures or by reference to relevant standards.