

First edition  
2005-08-15

Corrected version  
2006-04-15

---

---

**Dentistry — Manual toothbrushes —  
Resistance of tufted portion to deflection**

*Art dentaire — Brosses à dents manuelles — Résistance à la déflexion  
de la surface garnie*

**iTeh STANDARD PREVIEW**  
**(standards.iteh.ai)**

[ISO 22254:2005](https://standards.iteh.ai/catalog/standards/sist/71074773-2117-4f65-991e-89bf4ec3748/iso-22254-2005)

<https://standards.iteh.ai/catalog/standards/sist/71074773-2117-4f65-991e-89bf4ec3748/iso-22254-2005>



Reference number  
ISO 22254:2005(E)

**PDF disclaimer**

This PDF file may contain embedded typefaces. In accordance with Adobe's licensing policy, this file may be printed or viewed but shall not be edited unless the typefaces which are embedded are licensed to and installed on the computer performing the editing. In downloading this file, parties accept therein the responsibility of not infringing Adobe's licensing policy. The ISO Central Secretariat accepts no liability in this area.

Adobe is a trademark of Adobe Systems Incorporated.

Details of the software products used to create this PDF file can be found in the General Info relative to the file; the PDF-creation parameters were optimized for printing. Every care has been taken to ensure that the file is suitable for use by ISO member bodies. In the unlikely event that a problem relating to it is found, please inform the Central Secretariat at the address given below.

**iTeh STANDARD PREVIEW**  
**(standards.iteh.ai)**

ISO 22254:2005

<https://standards.iteh.ai/catalog/standards/sist/71074773-2117-4f65-991e-89bfa4ec3748/iso-22254-2005>

© ISO 2005

All rights reserved. Unless otherwise specified, no part of this publication may be reproduced or utilized in any form or by any means, electronic or mechanical, including photocopying and microfilm, without permission in writing from either ISO at the address below or ISO's member body in the country of the requester.

ISO copyright office  
Case postale 56 • CH-1211 Geneva 20  
Tel. + 41 22 749 01 11  
Fax + 41 22 749 09 47  
E-mail [copyright@iso.org](mailto:copyright@iso.org)  
Web [www.iso.org](http://www.iso.org)

Published in Switzerland

## Foreword

ISO (the International Organization for Standardization) is a worldwide federation of national standards bodies (ISO member bodies). The work of preparing International Standards is normally carried out through ISO technical committees. Each member body interested in a subject for which a technical committee has been established has the right to be represented on that committee. International organizations, governmental and non-governmental, in liaison with ISO, also take part in the work. ISO collaborates closely with the International Electrotechnical Commission (IEC) on all matters of electrotechnical standardization.

International Standards are drafted in accordance with the rules given in the ISO/IEC Directives, Part 2.

The main task of technical committees is to prepare International Standards. Draft International Standards adopted by the technical committees are circulated to the member bodies for voting. Publication as an International Standard requires approval by at least 75 % of the member bodies casting a vote.

Attention is drawn to the possibility that some of the elements of this document may be the subject of patent rights. ISO shall not be held responsible for identifying any or all such patent rights.

ISO 22254 was prepared by Technical Committee ISO/TC 106, *Dentistry*, Subcommittee SC 7, *Oral care products*.

This first edition, together with ISO 20126, cancels and replaces ISO 8627:1987.

This corrected version of ISO 22254:2005 incorporates the correction in the Foreword that this first edition, together with ISO 20126, both cancel and replace ISO 8627:1987.

**iTeh STANDARD PREVIEW**  
**(standards.iteh.ai)**  
<https://standards.iteh.ai/catalog/standards/sist/71074773-2117-4f65-991e-89bfa4ec3748/iso-22254-2005>

## Introduction

The stiffness of the tufted area of a manual toothbrush has been of great concern for both consumers and manufacturers. This International Standard provides a test method for determining the resistance of the tufted portion to deflection, which could be used to derive a stiffness as described in Annex A. However, this International Standard does not cover stiffness of manual toothbrushes and its classification. For stiffness determination, the measurement of the tufted area is required, but the result of the measurement varies over a wide range depending on the method of the measurement and the shape of the tuft holes. Therefore, the tufted area and stiffness determinations are described in Annex A. Since the perception of stiffness differs amongst different countries, stiffness may be classified differently in each country.

## iTeh STANDARD PREVIEW (standards.iteh.ai)

[ISO 22254:2005](https://standards.iteh.ai/catalog/standards/sist/71074773-2117-4f65-991e-89bfa4ec3748/iso-22254-2005)

<https://standards.iteh.ai/catalog/standards/sist/71074773-2117-4f65-991e-89bfa4ec3748/iso-22254-2005>

# Dentistry — Manual toothbrushes — Resistance of tufted portion to deflection

## 1 Scope

This International Standard specifies a test method for determining the resistance of the tufted portion of manual toothbrushes to deflection. This International Standard is applicable to toothbrushes having a conventional, flat trim design and may not be applicable to toothbrushes with other designs. The results obtained with this International Standard may not correspond to consumer perceptions of the stiffness of toothbrush filaments.

## 2 Normative references

The following referenced documents are indispensable for the application of this document. For dated references, only the edition cited applies. For undated references, the latest edition of the referenced document (including any amendments) applies.

ISO 1942 (all parts), *Dentistry — Vocabulary*

ISO 3696:1987, *Water for analytical laboratory use — Specification and test methods*

## 3 Terms and definitions

For the purposes of this document, the terms and definitions given in ISO 1942-1 to ISO 1942-5 and the following apply.

### 3.1

#### **manual toothbrush**

hand-powered device primarily for cleaning surfaces of teeth, the working end of which carries filaments

### 3.2

#### **brush head**

working end of a toothbrush to which the filaments are attached

### 3.3

#### **filament**

single strand within the brush head

### 3.4

#### **tuft**

group of filaments gathered together and attached to the brush head

### 3.5

#### **tuft hole surface**

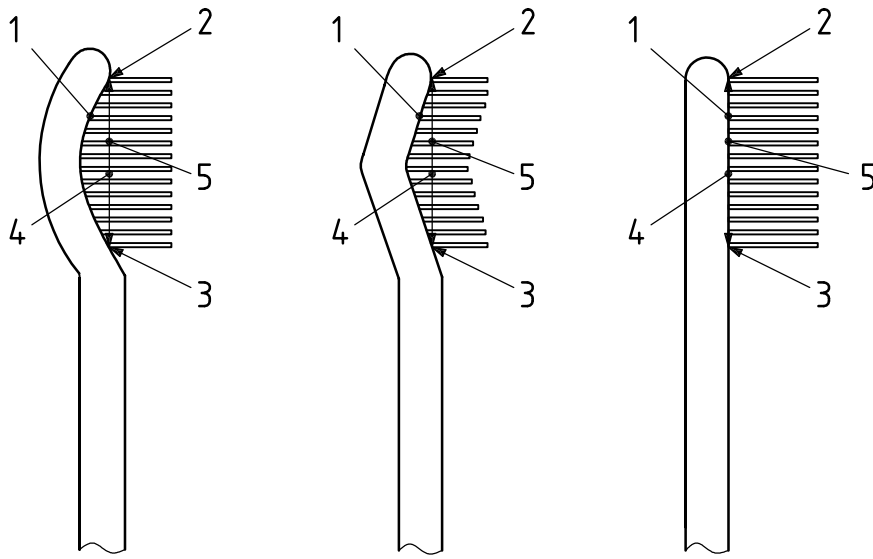
surface of the tuft holes, which can be convex, triangular or plane and which is limited by a peripheral tangent line to the outer tuft holes

### 3.6

#### **tuft hole plane**

plane between the base of the tufts (where they meet the face of the brush) at the top of the brush head and the base of the tufts at the bottom of the brush head

See Figure 1.

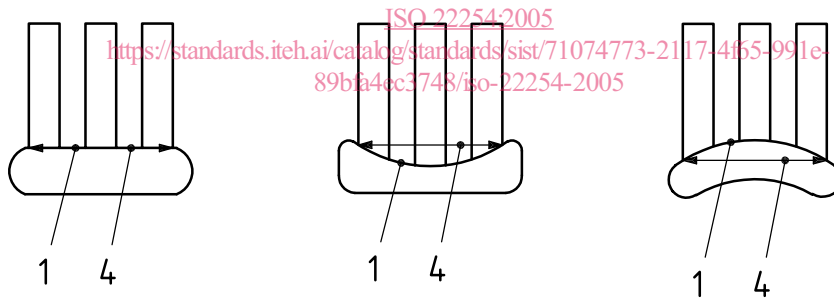


a) Side view of brush head

**Key**

- 1 tuft hole surface
- 2 top of brush head
- 3 bottom of brush head
- 4 tuft hole plane
- 5 tufted area

**iTeh STANDARD PREVIEW**  
(standards.iteh.ai)

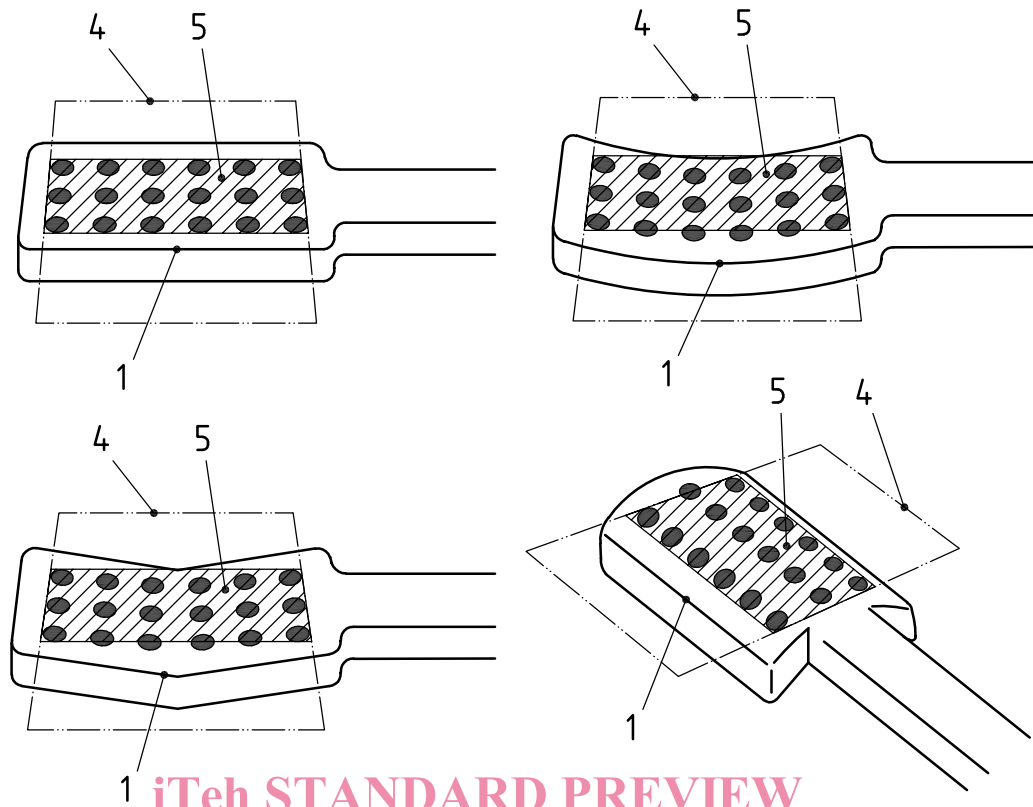


b) Top view of brush head

**Key**

- 1 tuft hole surface
- 4 tuft hole plane

**Figure 1 — Tuft hole plane**



iTeh STANDARD PREVIEW

(standards.iteh.ai)

c) After removal of tufts

#### Key

- 1 tuft hole surface
- 4 tuft hole plane
- 5 tufted area

ISO 22254:2005  
<https://standards.iteh.ai/catalog/standards/sist/71074773-2117-4f65-991e-89bfa4ec3748/iso-22254-2005>

Figure 1 (continued)

### 3.7

#### tufted area

linear projection of the tuft hole surface on to the tuft hole plane

NOTE An alternative definition is: area surrounded by a peripheral tangent line to the outer tufts where they meet the tuft hole plane.

### 3.8

#### brush neck

part of the toothbrush which joins the brush head to the handle

### 3.9

#### resistance to deflection

resisting force of the tufts to deflection under a force of 5 N, applied at right angles to the tuft hole plane

## 4 Sampling

The toothbrushes obtained for testing shall be as-manufactured and not modified in any way, except as specified for this International Standard.

Five brushes shall be tested.

The sampling method and the means of procurement are not covered by this International Standard and should be subject to agreement between the interested parties.

## 5 Test method

### 5.1 Apparatus

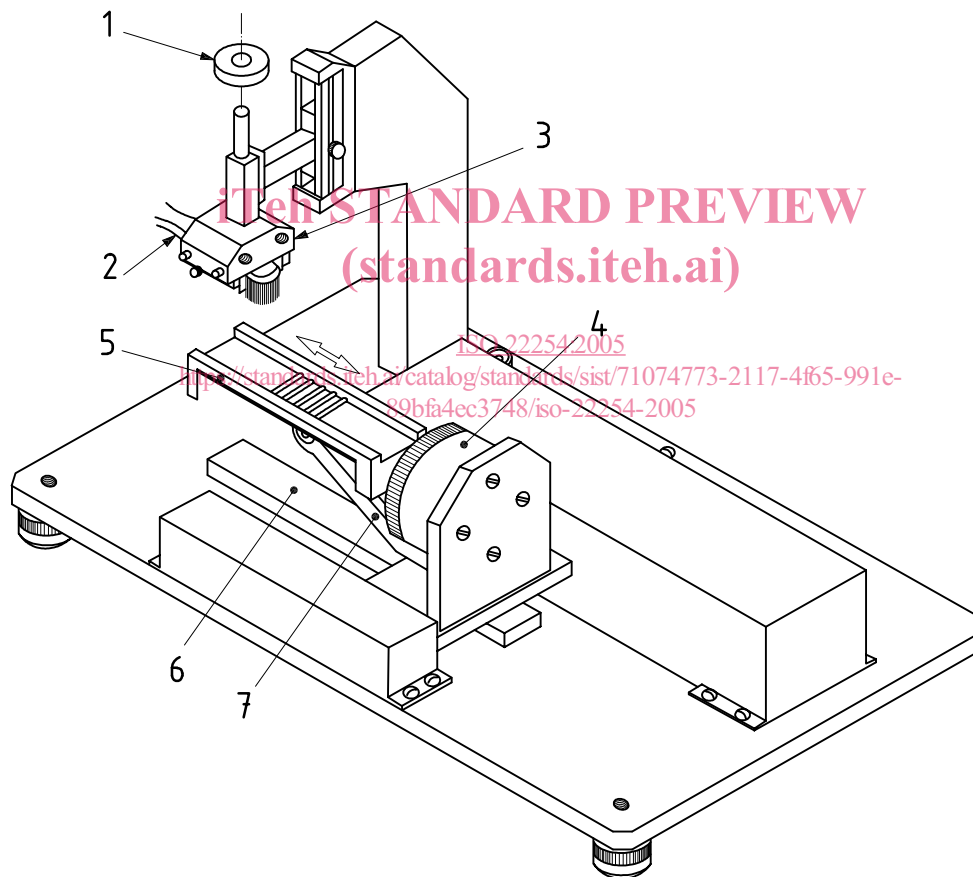
**5.1.1 Test machine** (see Figure 2), capable of measuring the resistance of the tufted portion to deflection, consisting of the following components:

**5.1.1.1 Brushing table** (see Figure 3), consisting of five rods ( $3,2 \pm 0,1$ ) mm diameter, with a distance between the centres of the two rods of ( $8,2 \pm 0,1$ ) mm, made of a hard metal such as stainless steel.

**5.1.1.2 Vertical column**, consisting of a gripping block for the brush head such that it does not flex and applies ( $5 \pm 0,05$ ) N to the gripped brush.

**5.1.1.3 Load cell**, of force range from 0 to 20 N and accurate to 0,05 N, connected to one end of the brushing table.

**5.1.1.4 Driving unit**, which moves the table back and forth along the longitudinal axis at a rate between 10 mm/s and 50 mm/s (traverse distance: more than the length of a brush head).



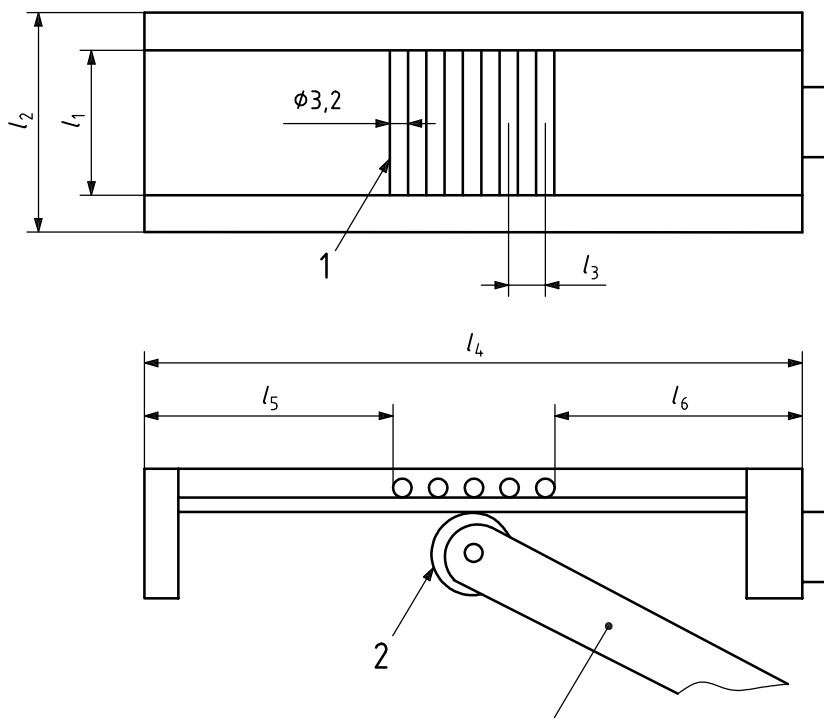
#### Key

- 1 mass to exert force
- 2 brush head
- 3 gripping block
- 4 load cell
- 5 brushing table
- 6 rail
- 7 support

Figure 2 — Test machine



Dimensions in millimetres



iTeh STANDARD PREVIEW  
(standards.iteh.ai)

**Key**

- 1 rod
- 2 bearing
- 3 support

ISO 22254:2005

<https://standards.iteh.ai/catalog/standards/sist/71074773-2117-4f65-991e-89bf4ee3748/iso-22254-2005>

$l_1$	30 to 40	$l_4$	150 to 170
$l_2$	45 to 50	$l_5$	55 to 60
$l_3$	8,2	$l_6$	55 to 60

**Figure 3 — Brushing table of test machine**

**5.2 Test conditions**

All tests shall be conducted at  $(23 \pm 5)$  °C unless otherwise specified.

**5.3 Conditioning of toothbrushes**

Cut off the brush head at the neck, discard the handle and weigh the brush head to the nearest 0,5 g. Immerse the brush head in water, in accordance with grade 3 of ISO 3696:1987, at  $(37 \pm 2)$  °C for 90 s. After immersion, shake off excess water and fix the brush head in the gripping device.