



SLOVENSKI STANDARD
SIST ISO 3547-2:2008

01-julij-2008

BUXca Yý U
SIST ISO 3547-2:2002

Drnsni ležaji - Zvite puše - 2. del: Podatki za preskus zunanjega in notranjega premera

Plain bearings - Wrapped bushes - Part 2: Test data for outside and inside diameters

Gleitlager - Gerollte Buchsen - Teil 2: Prüfangaben für Außen- und Innendurchmesser

Paliers lisses - Bagues roulées - (Partie 2: Données d'essai pour le diamètre extérieur et le diamètre intérieur)

[SIST ISO 3547-2:2008](https://standards.itih.ai/catalog/standards/sist/ddf016d4-cece-49ba-9d94-0bd8/sist-iso-3547-2:2008)

<https://standards.itih.ai/catalog/standards/sist/ddf016d4-cece-49ba-9d94-0bd8/sist-iso-3547-2:2008>

Ta slovenski standard je istoveten z: ISO 3547-2:2006

ICS:

21.100.10 Drnsni ležaji Plain bearings

SIST ISO 3547-2:2008 en

iTeh STANDARD PREVIEW
(standards.iteh.ai)

SIST ISO 3547-2:2008

<https://standards.iteh.ai/catalog/standards/sist/ddf016d4-cece-49ba-9d94-135bb75b0bd8/sist-iso-3547-2-2008>

**Plain bearings — Wrapped bushes —
Part 2:
Test data for outside and inside
diameters**

*Paliers lisses — Bagues roulées —
Partie 2: Données d'essai pour le diamètre extérieur et le diamètre
intérieur*

STANDARD PREVIEW
(standards.iteh.ai)

[SIST ISO 3547-2:2008](https://standards.iteh.ai/catalog/standards/sist/ddf016d4-cece-49ba-9d94-135bb75b0bd8/sist-iso-3547-2-2008)
<https://standards.iteh.ai/catalog/standards/sist/ddf016d4-cece-49ba-9d94-135bb75b0bd8/sist-iso-3547-2-2008>



PDF disclaimer

This PDF file may contain embedded typefaces. In accordance with Adobe's licensing policy, this file may be printed or viewed but shall not be edited unless the typefaces which are embedded are licensed to and installed on the computer performing the editing. In downloading this file, parties accept therein the responsibility of not infringing Adobe's licensing policy. The ISO Central Secretariat accepts no liability in this area.

Adobe is a trademark of Adobe Systems Incorporated.

Details of the software products used to create this PDF file can be found in the General Info relative to the file; the PDF-creation parameters were optimized for printing. Every care has been taken to ensure that the file is suitable for use by ISO member bodies. In the unlikely event that a problem relating to it is found, please inform the Central Secretariat at the address given below.

iTeh STANDARD PREVIEW
(standards.iteh.ai)

SIST ISO 3547-2:2008

<https://standards.iteh.ai/catalog/standards/sist/ddf016d4-cece-49ba-9d94-135bb75b0bd8/sist-iso-3547-2-2008>

© ISO 2006

All rights reserved. Unless otherwise specified, no part of this publication may be reproduced or utilized in any form or by any means, electronic or mechanical, including photocopying and microfilm, without permission in writing from either ISO at the address below or ISO's member body in the country of the requester.

ISO copyright office
Case postale 56 • CH-1211 Geneva 20
Tel. + 41 22 749 01 11
Fax + 41 22 749 09 47
E-mail copyright@iso.org
Web www.iso.org

Published in Switzerland

Contents

Page

Foreword.....	iv
1 Scope	1
2 Normative references	1
3 Terms and definitions	1
4 Symbols and units	2
5 Presentation of data on drawing	2
6 Tests	4
6.1 Test A	4
6.2 Test B	4
6.3 Test C	4
6.4 Test D	4
7 Test A	4
7.1 Description	4
7.2 Calculation basis	4
7.3 Obtaining data — Example	7
7.4 Presentation of data on drawing — Example	8
8 Test B	8
8.1 Description	8
8.2 Obtaining data — Example	9
8.3 Presentation of data on drawing — Example	9
9 Test C	9
9.1 Description	9
9.2 Obtaining data — Example	10
9.3 Presentation of data on drawing — Example	11
10 Test D	11
10.1 Description	11
10.2 Obtaining data — Example	11
10.3 Presentation of data on drawing — Example	12
11 Designation of tests according to this part of ISO 3547	12

Foreword

ISO (the International Organization for Standardization) is a worldwide federation of national standards bodies (ISO member bodies). The work of preparing International Standards is normally carried out through ISO technical committees. Each member body interested in a subject for which a technical committee has been established has the right to be represented on that committee. International organizations, governmental and non-governmental, in liaison with ISO, also take part in the work. ISO collaborates closely with the International Electrotechnical Commission (IEC) on all matters of electrotechnical standardization.

International Standards are drafted in accordance with the rules given in the ISO/IEC Directives, Part 2.

The main task of technical committees is to prepare International Standards. Draft International Standards adopted by the technical committees are circulated to the member bodies for voting. Publication as an International Standard requires approval by at least 75 % of the member bodies casting a vote.

Attention is drawn to the possibility that some of the elements of this document may be the subject of patent rights. ISO shall not be held responsible for identifying any or all such patent rights.

ISO 3547-2 was prepared by Technical Committee ISO/TC 123, *Plain bearings*, Subcommittee SC 3, *Dimensions, tolerances and construction details*.

This second edition cancels and replaces the first edition (ISO 3547-2:1999), which has been technically revised.

ISO 3547 consists of the following parts, under the general title *Plain bearings — Wrapped bushes*:

- *Part 1: Dimensions* <https://standards.iteh.ai/catalog/standards/sist/ddf016d4-cece-49ba-9d94-135bb75b0bd8/sist-iso-3547-2-2008>
- *Part 2: Test data for outside and inside diameters*
- *Part 3: Lubrication holes, grooves and indentations*
- *Part 4: Materials*

The following parts are under preparation:

- *Part 5: Checking the outside diameter*
- *Part 6: Checking the inside diameter*
- *Part 7: Measurement of wall thickness of thin-walled half-bearings and thin-walled bushes*

Plain bearings — Wrapped bushes —

Part 2: Test data for outside and inside diameters

1 Scope

This part of ISO 3547 specifies the test data for outside and inside diameters of wrapped bushes made of solid and multi-layer bearing material for plain bearing applications. It also specifies test designations.

Since the wall thickness of the bush is measured in the free condition, no special test data is required for this on the drawing (see ISO 3547-5 and ISO 3547-6).

NOTE Depending on the manufacturing method, the back of the bushes can show isolated light depressions and, similarly, bushes with lubrication holes, grooves and bore indentations can show distortion. The wall thickness must therefore be measured away from these areas.

2 Normative references

The following referenced documents are indispensable for the application of this document. For dated references, only the edition cited applies. For undated references, the latest edition of the referenced document (including any amendments) applies.

ISO 3547-1:2006, *Plain bearings — Wrapped bushes — Part 1: Dimensions*

ISO 3547-4:2006, *Plain bearings — Wrapped bushes — Part 4: Materials*

ISO 4378-1, *Plain bearings — Terms, definitions and classification — Part 1: Design, bearing materials and their properties*

ISO 12301, *Plain bearings — Quality control techniques and inspection of geometrical and material quality characteristics*

ISO 13715, *Technical drawings — Edges of undefined shape — Vocabulary and indication*

3 Terms and definitions

For the purposes of this document, the terms and definitions given in ISO 4378-1 apply.

4 Symbols and units

See Table 1.

Table 1 — Symbols and units

Symbol	Description	Unit
A_{cal}	Reduced area of cross section (calculated value) of the bush	mm ²
B	Width of the bush	mm
C_i	Inside chamfer	mm
C_o	Outside chamfer	mm
D_{fl}	Flange diameter	mm
D_{H}	Housing bore diameter	mm
D_i	Inside diameter of the bush	mm
$D_{i,\text{ch}}$	Inside diameter of the bush in the ring gauge	mm
D_o	Outside diameter of the bush	mm
F_{ch}	Checking load	mm
$d_{\text{ch},1}$	Diameter of the checking block or ring gauge	mm
$d_{\text{ch},2}$	Diameter of the setting plug or plug gauge	mm
r	Flange radius	mm
s_1	Thickness of the backing layer ^a	mm
s_2	Thickness of the bearing material layer ^a	mm
s_3	Wall thickness ^a	mm
s_{fl}	Flange thickness	mm
ΔD_o	Tolerance of D_o	mm
v	Elastic reduction of the outside diameter under checking load F_{ch}	mm
z	Distance apart of the halves of the checking block	mm
Δz	Indicator reading	mm
Δz_D	Circumference indicator reading for test D	mm

^a For bushes which are made of a single material, $s_1 = s_3$ or $s_2 = s_3$.

5 Presentation of data on drawing

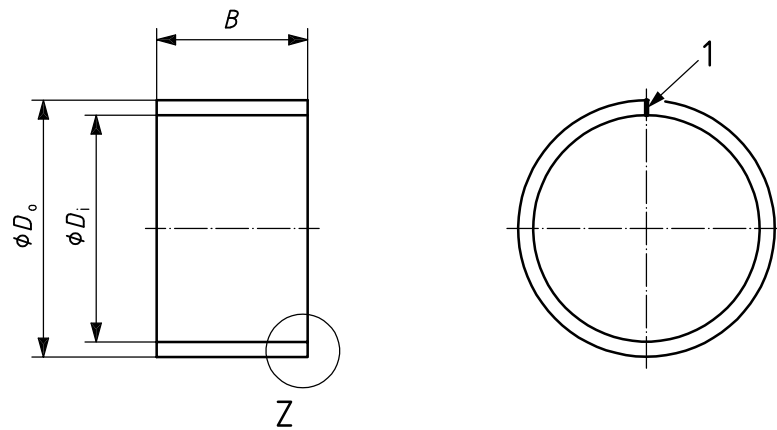
The drawing should show either

- the outside diameter, D_o , and the wall thickness, s_3 , or
- the outside diameter, D_o , and the inside diameter, D_i .

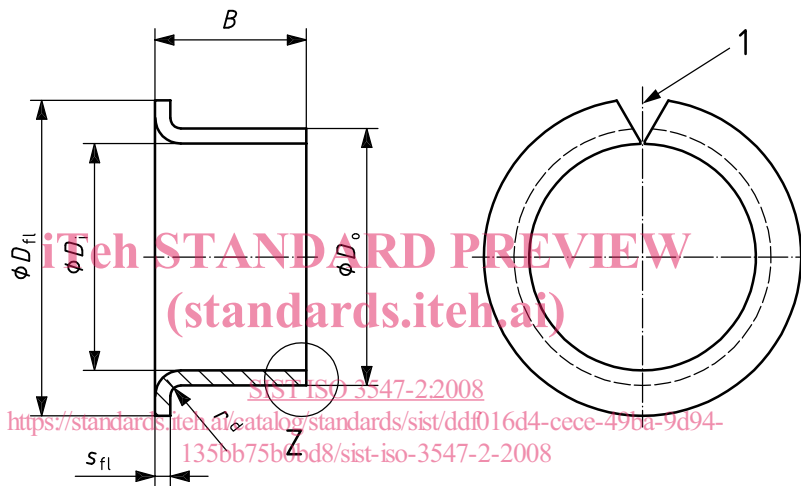
Wall thickness, s_3 , and inside diameter, D_i , shall not be specified together on the same drawing.

See Figure 1.

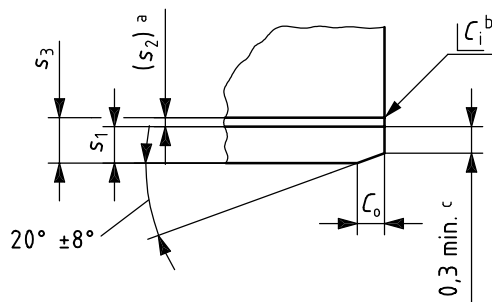
Dimensions in millimetres



Type C cylindrical bush



Z



Type F flanged bush

Key

- 1 split
- a Thickness of the bearing material layer: only valid as a basis for calculation in accordance with 7.2.
- b C_i may be a chamfer or break edge, in accordance with ISO 13715.
- c 0,2 mm min. for nominal wall thickness 0,5 mm.
- d $r_{\max} = s_3$.

Figure 1 — Cylindrical and flanged bush