



DRAFT INTERNATIONAL STANDARD ISO/DIS 2328

ISO/TC 110/SC 2

Secretariat: **BSI**

Voting begins on
2002-05-02

Voting terminates on
2002-10-02

INTERNATIONAL ORGANIZATION FOR STANDARDIZATION • МЕЖДУНАРОДНАЯ ОРГАНИЗАЦИЯ ПО СТАНДАРТИЗАЦИИ • ORGANISATION INTERNATIONALE DE NORMALISATION

Fork-lift trucks — Hook-on type fork arms and fork arm carriages — Mounting dimensions

[Revision of second edition (ISO 2328:1993)]

Chariots élévateurs à fourche — Bras de fourche à tenons et tabliers porte-équipements — Dimensions de montage

ICS 53.060

iTeh STANDARD PREVIEW (standards.iteh.ai)

ISO/DIS 2328

<https://standards.iteh.ai/catalog/standards/sist/6a9e2840-0371-4655-b959-41fbda53a28a/iso-dis-2328>

In accordance with the provisions of Council Resolution 15/1993 this document is circulated in the English language only.

Conformément aux dispositions de la Résolution du Conseil 15/1993, ce document est distribué en version anglaise seulement.

To expedite distribution, this document is circulated as received from the committee secretariat. ISO Central Secretariat work of editing and text composition will be undertaken at publication stage.

Pour accélérer la distribution, le présent document est distribué tel qu'il est parvenu du secrétariat du comité. Le travail de rédaction et de composition de texte sera effectué au Secrétariat central de l'ISO au stade de publication.

THIS DOCUMENT IS A DRAFT CIRCULATED FOR COMMENT AND APPROVAL. IT IS THEREFORE SUBJECT TO CHANGE AND MAY NOT BE REFERRED TO AS AN INTERNATIONAL STANDARD UNTIL PUBLISHED AS SUCH.

IN ADDITION TO THEIR EVALUATION AS BEING ACCEPTABLE FOR INDUSTRIAL, TECHNOLOGICAL, COMMERCIAL AND USER PURPOSES, DRAFT INTERNATIONAL STANDARDS MAY ON OCCASION HAVE TO BE CONSIDERED IN THE LIGHT OF THEIR POTENTIAL TO BECOME STANDARDS TO WHICH REFERENCE MAY BE MADE IN NATIONAL REGULATIONS.

Copyright notice

This ISO document is a Draft International Standard and is copyright-protected by ISO. Except as permitted under the applicable laws of the user's country, neither this ISO draft nor any extract from it may be reproduced, stored in a retrieval system or transmitted in any form or by any means, electronic, photocopying, recording or otherwise, without prior written permission being secured.

Requests for permission to reproduce should be addressed to ISO at the address below or ISO's member body in the country of the requester.

Copyright Manager
ISO Central Secretariat
1 rue de Varembé
1211 Geneva 20 Switzerland
tel. + 41 22 749 0111
fax + 41 22 734 1079
internet: iso@iso.ch

Reproduction may be subject to royalty payments or a licensing agreement.

Violators may be prosecuted.

iTeh STANDARD PREVIEW (standards.iteh.ai)

[ISO/DIS 2328](https://standards.iteh.ai/catalog/standards/sist/6a9e2840-0371-4655-b959-41fbda53a28a/iso-dis-2328)

<https://standards.iteh.ai/catalog/standards/sist/6a9e2840-0371-4655-b959-41fbda53a28a/iso-dis-2328>

Contents

Foreword	iv
1 Scope.....	1
2 Normative references	1
3 Terms and definitions.....	1
4 Requirements	1
4.1 Dimensions	1
4.2 Stops	1
4.3 Slot on the bottom	2

iTeh STANDARD PREVIEW (standards.iteh.ai)

[ISO/DIS 2328](https://standards.iteh.ai/catalog/standards/sist/6a9e2840-0371-4655-b959-41fbda53a28a/iso-dis-2328)

<https://standards.iteh.ai/catalog/standards/sist/6a9e2840-0371-4655-b959-41fbda53a28a/iso-dis-2328>

Foreword

ISO (the International Organization for Standardization) is a worldwide federation of national standards bodies (ISO member bodies). The work of preparing International Standards is normally carried out through ISO technical committees. Each member body interested in a subject for which a technical committee has been established has the right to be represented on that committee. International organizations, governmental and non-governmental, in liaison with ISO, also take part in the work. ISO collaborates closely with the International Electrotechnical Commission (IEC) on all matters of electrotechnical standardization.

International Standards are drafted in accordance with the rules given in the ISO/IEC Directives, Part 3.

Draft International Standards adopted by the technical committees are circulated to the member bodies for voting. Publication as an International Standard requires approval by at least 75 % of the member bodies casting a vote.

Attention is drawn to the possibility that some of the elements of this International Standard may be the subject of patent rights. ISO shall not be held responsible for identifying any or all such patent rights.

International Standard ISO 2328 was prepared by Technical Committee ISO/TC 110, *Fork-lift trucks*, Subcommittee SC 2, .

iTeh STANDARD PREVIEW
(standards.iteh.ai)

This third edition cancels and replaces the second edition (1993), all clauses have been technically revised.

<https://standards.iteh.ai/catalog/standards/sist/6a9e2840-0371-4655-b959-41fbd53a28a/iso-dis-2328>

Fork-lift trucks — Hook-on type fork arms and fork arm carriages — Mounting dimensions

1 Scope

This International Standard specifies dimensions and safety requirements for fork carriers and hook-on type fork arms for fork-lift trucks, to permit interchangeability of fork arms and/or other attachments, relating to the truck rated capacity and type of fork arm.

2 Normative references

The following normative document contains provisions which, through reference in this text, constitute provisions of this International Standard. For dated references, subsequent amendments to, or revisions of, any of these publications do not apply. However, parties to agreements based on this International Standard are encouraged to investigate the possibility of applying the most recent editions of the normative documents indicated below. For undated references, the latest edition of the normative document referred to applies. Members of IEC and ISO maintain registers of currently valid International Standards.

ISO 2331:1974, *Fork lift trucks — Hook-on type fork arms — Vocabulary*

ISO 3691:1980, *Powered industrial trucks — Safety code*

3 Terms and definitions

For the purposes of this International Standard, the terms and definitions given in ISO 2331 and ISO 3691 apply.

4 Requirements

4.1 Dimensions

The mounting dimensions of the fork arms and fork carrier for types A and B fork arms shall be in accordance with Figure 1 and Tables 1 and 2. Fork arm location slots of the dimensions specified in Table 2 shall be provided at suitable spacing on the fork arm carriage. One slot shall be situated on the carrier plate centreline in order to locate attachments, which shall be deeper to facilitate the attachment and fork mounting.

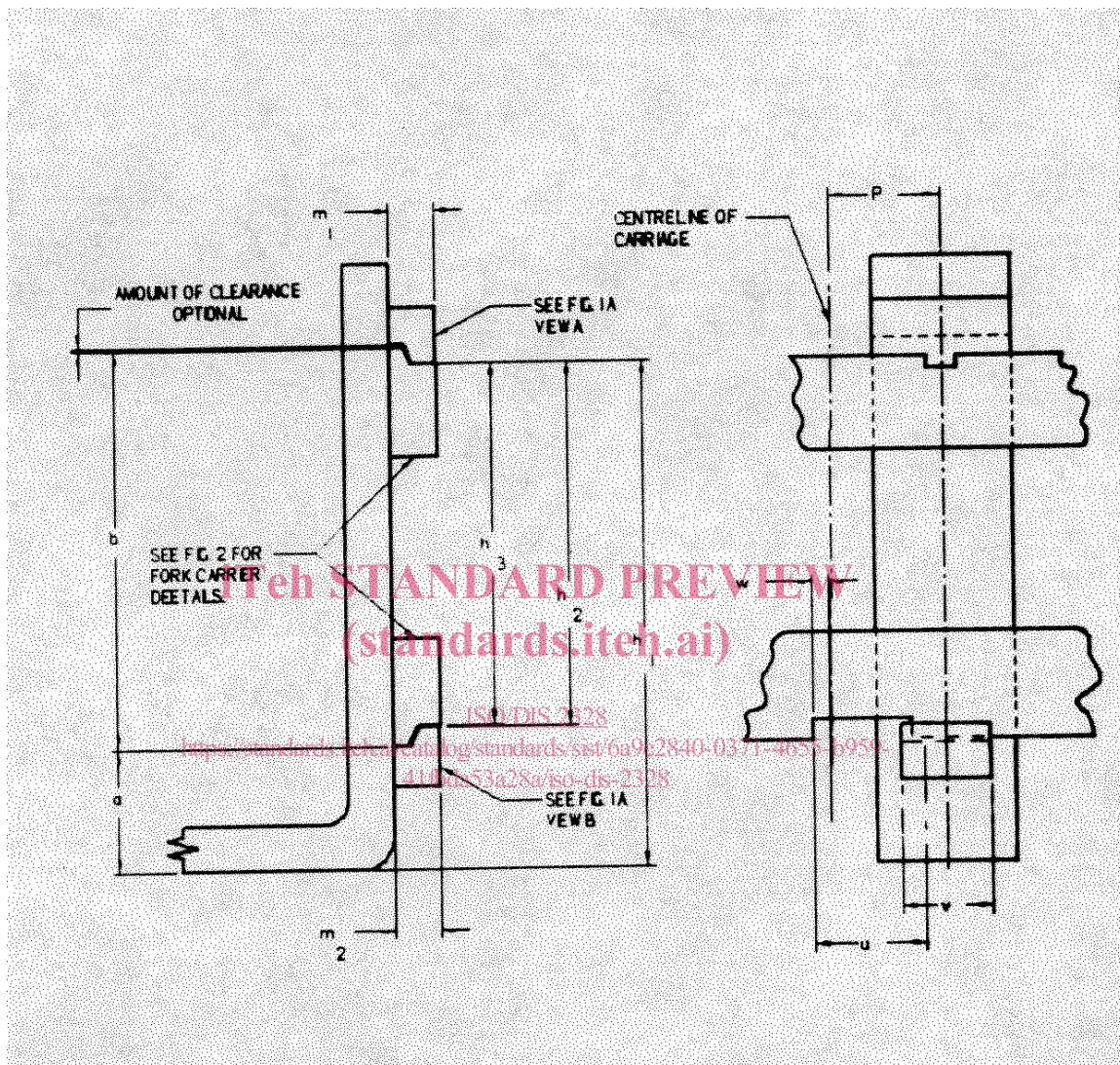
NOTE Tables 1 and 2 specify dimensions for two types of fork arm, designated A and B, for each value of truck rated capacity.

4.2 Stops

Stops shall be provided in order to prevent lateral disengagement of the fork arms from the extremities of the fork carrier. If these stops are not permanent, i.e. welded, then the driver handbook shall contain warnings in accordance with ISO 3691-1 7.2, 7.2.1, 7.2.2 and 7.2.6.

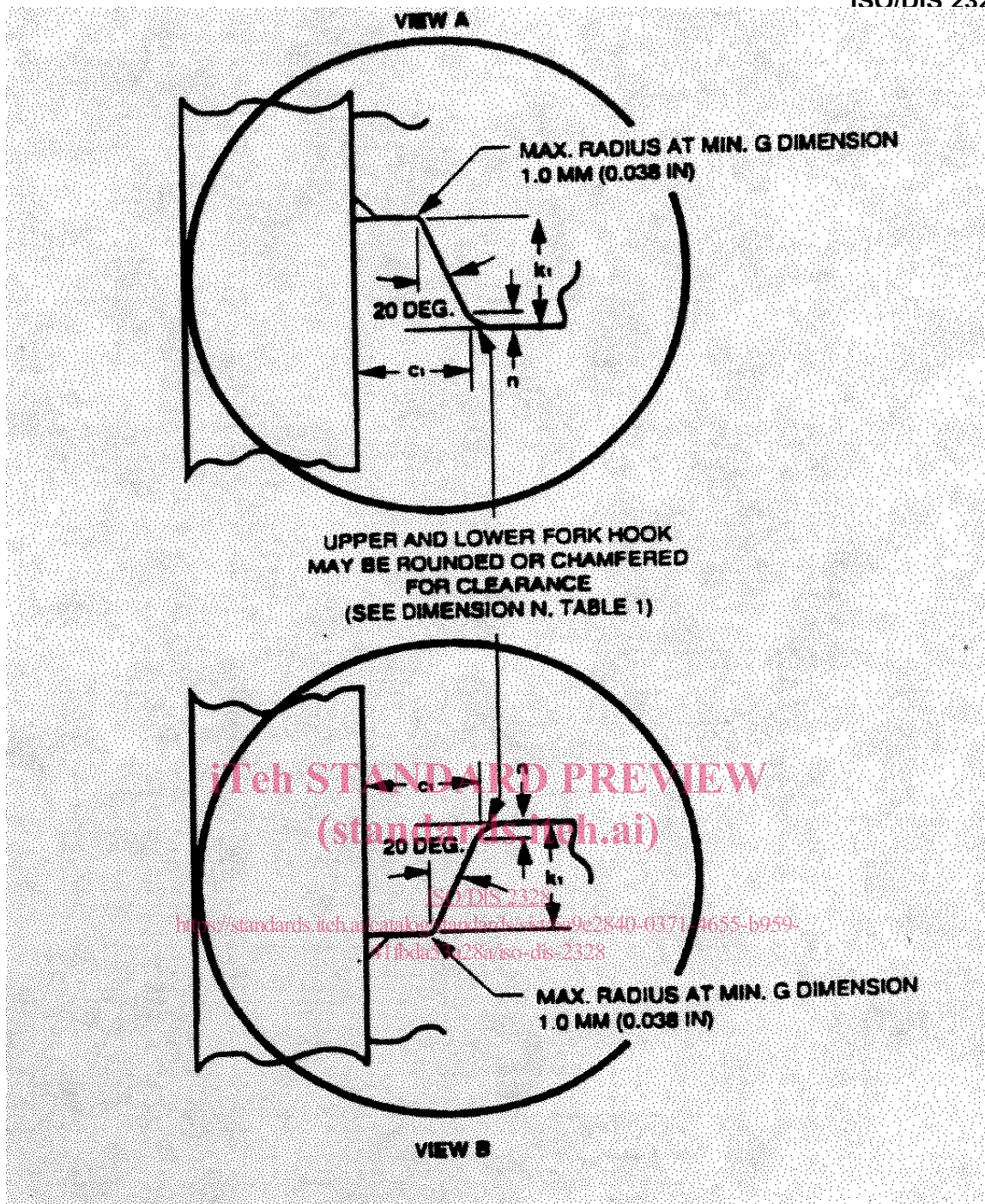
4.3 Slot on the bottom

If a fork arm removal slot is provided at the bottom of the fork carrier, it shall be positioned as in Table 2 with View x-x being optional. If these means are not permanent then the driver handbook shall contain warnings in accordance with ISO 3691-1 7.2, 7.2.1, 7.2.2 and 7.2.6.



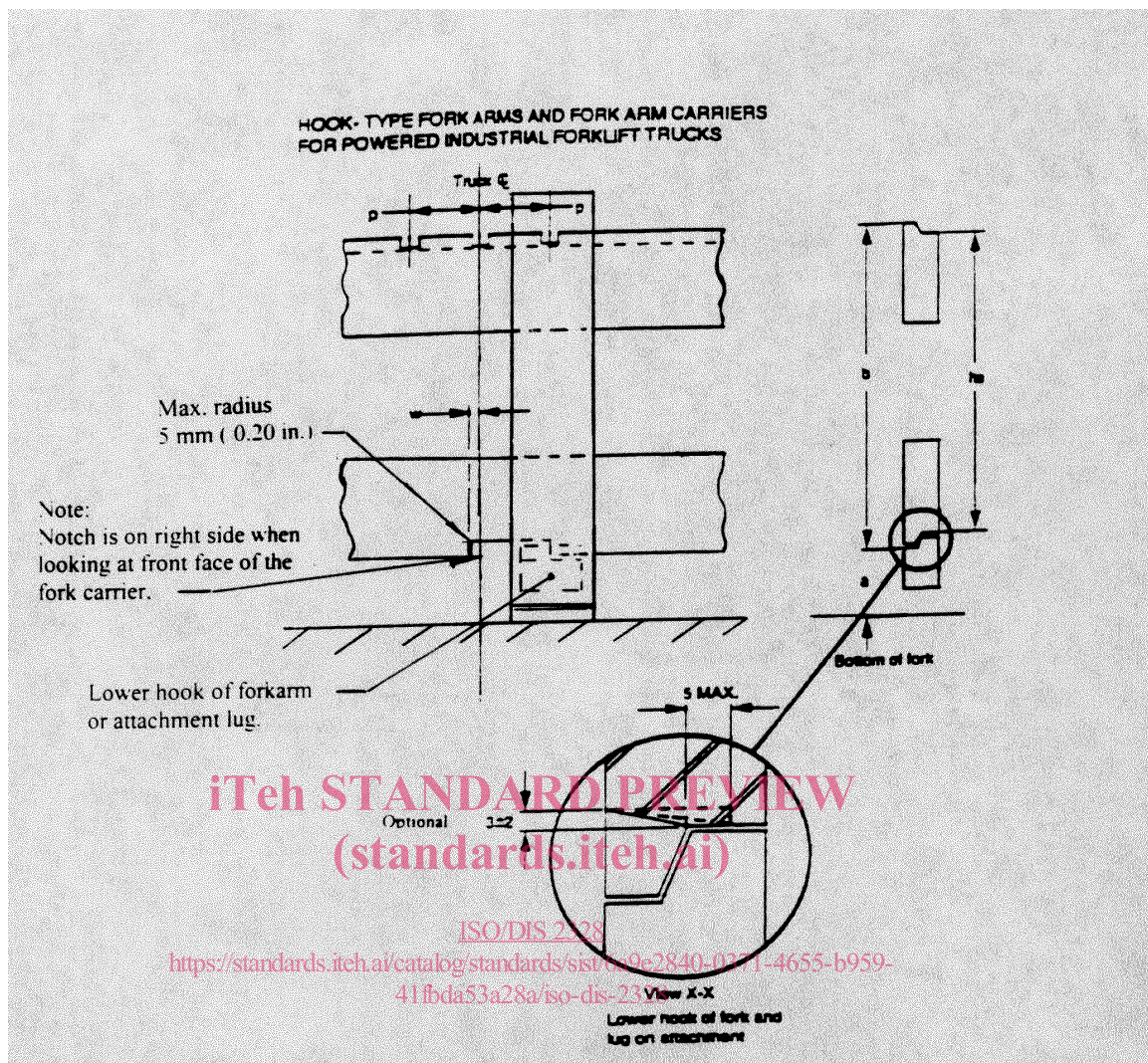
- 1) See figure 1B view A;
- 2) Truck centre like;
- 3) See Figure 1C for fork carrier details;
- 4) See Figure 1B view B.

Figure 1 A — Hook-on type fork arm mounted on the fork arm carrier



- 1) Upper and lower fork hook may be rounded or chamfered for clearance (see Table 1)
- 2) Max radius 1,0 mm (0,038 in)
- 3) Max radius 1,0 mm (0,038 in)
 - a) View A
 - b) View B

Figure 1 B — Fork arm hook detail



- 1) Max radius 5 mm (0,20 in)
- 2) Notch is on right side when looking at front face of the fork carrier
- 3) Bottom of fork
- 4) Lower hook of fork arm or attachment lug
- 5) Truck centre line

X view X-X lower hook of fork and lug on attachment.

Figure 1 C — Hook-type fork arm carrier

Table 1 — Mounting dimensions of fork arms

Dimensions in millimetres													
Truck rated capacity			Fork arm type	a ref.	c_1	h_1	h_2	tol	m_1	m_2	k_1	n	Lower hook v
Class	Mass kg	Rated load centre distance											
					+1	+/-3		.	max.	max.	min.	+1.5, -0	+1.5, -1.5
					0								
1	up to 999	400	A	76	16.5	394	306		28	26	14	5	90
			B	114		432							
2	1 000 to 2 500	500	A	76	16.5	470	382	0	31	29	14	5	90
			B	152		546							
3	2 501 to 4 999	500	A	76	22	568	477	+1,5	40	38	17	5.5	115
			B	203		695							
4	5 000 to 8 000	600	A	127	26	743	598	0	47	45	20	8	139
			B	254		870							
5	8 001 to 10 999	600	A	127	35	830	680		65	63	26	8	164
			B	257		960							