



**iTeh STANDARD PREVIEW**  
**(standards.iteh.ai)**

[SIST EN 16337:2013](#)

<https://standards.iteh.ai/catalog/standards/sist/6ac008d3-2a31-4b9b-8ece-21ed8eb73261/sist-en-16337-2013>

EUROPEAN STANDARD

EN 16337

NORME EUROPÉENNE

EUROPÄISCHE NORM

June 2013

ICS 97.140

English Version

## Hardware for furniture - Strength and loading capacity of shelf supports

Quincaillerie d'ameublement - Résistance mécanique et capacité de charge des supports d'étagère

Möbelbeschläge - Festigkeit und Tragfähigkeit von Bodenträgern

This European Standard was approved by CEN on 1 May 2013.

CEN members are bound to comply with the CEN/CENELEC Internal Regulations which stipulate the conditions for giving this European Standard the status of a national standard without any alteration. Up-to-date lists and bibliographical references concerning such national standards may be obtained on application to the CEN-CENELEC Management Centre or to any CEN member.

This European Standard exists in three official versions (English, French, German). A version in any other language made by translation under the responsibility of a CEN member into its own language and notified to the CEN-CENELEC Management Centre has the same status as the official versions.

CEN members are the national standards bodies of Austria, Belgium, Bulgaria, Croatia, Cyprus, Czech Republic, Denmark, Estonia, Finland, Former Yugoslav Republic of Macedonia, France, Germany, Greece, Hungary, Iceland, Ireland, Italy, Latvia, Lithuania, Luxembourg, Malta, Netherlands, Norway, Poland, Portugal, Romania, Slovakia, Slovenia, Spain, Sweden, Switzerland, Turkey and United Kingdom.

[SIST EN 16337:2013](https://standards.iteh.ai/catalog/standards/sist/6ac008d3-2a31-4b9b-8ece-21ed8eb73261/sist-en-16337-2013)

<https://standards.iteh.ai/catalog/standards/sist/6ac008d3-2a31-4b9b-8ece-21ed8eb73261/sist-en-16337-2013>



EUROPEAN COMMITTEE FOR STANDARDIZATION  
COMITÉ EUROPÉEN DE NORMALISATION  
EUROPÄISCHES KOMITEE FÜR NORMUNG

Management Centre: Avenue Marnix 17, B-1000 Brussels

<b>Contents</b>	<b>Page</b>
Foreword.....	3
<b>1</b> <b>Scope</b> .....	<b>4</b>
<b>2</b> <b>Normative references</b> .....	<b>4</b>
<b>3</b> <b>Terms and definitions</b> .....	<b>5</b>
<b>4</b> <b>General test condition</b> .....	<b>5</b>
4.1 <b>Preliminary preparation</b> .....	5
4.2 <b>Test equipment</b> .....	5
4.2.1 <b>Test wall</b> .....	5
4.2.2 <b>Particle board properties</b> .....	5
4.2.3 <b>Melamine faced particleboard</b> .....	6
4.2.4 <b>Steel impact plates</b> .....	6
4.2.5 <b>Masses</b> .....	6
4.3 <b>Tolerances (allowed variation from the nominal values)</b> .....	6
<b>5</b> <b>Test set-up</b> .....	<b>6</b>
<b>6</b> <b>Test procedures and requirements</b> .....	<b>7</b>
6.1 <b>General</b> .....	7
6.2 <b>Strength requirements and tests</b> .....	8
6.3 <b>Verification of loading capacity</b> .....	8
6.3.1 <b>General</b> .....	8
6.3.2 <b>Impact test</b> .....	8
6.3.3 <b>Sustained load test</b> .....	10
6.4 <b>Corrosion resistance</b> .....	10
<b>7</b> <b>Test report</b> .....	<b>10</b>
<b>Annex A</b> (normative) <b>Requirements for product information</b> .....	<b>11</b>
A.1 <b>General</b> .....	11
A.2 <b>Field of application</b> .....	11
A.3 <b>Loading capacity, <math>M</math></b> .....	11
A.4 <b>Adjustment systems</b> .....	11
A.5 <b>Corrosion test</b> .....	11
A.6 <b>Mounting instructions</b> .....	11
<b>Annex B</b> (normative) <b>Test parameters for impact plates (4.2.4)</b> .....	<b>12</b>
<b>Annex C</b> (informative) <b>Determination of loading capacity</b> .....	<b>13</b>
C.1 <b>Determination of breaking load</b> .....	13
C.2 <b>Calculation of loading capacity, <math>M</math></b> .....	13
<b>Bibliography</b> .....	<b>14</b>

## Foreword

This document (EN 16337:2013) has been prepared by Technical Committee CEN/TC 207 "Furniture", the secretariat of which is held by UNI.

This European Standard shall be given the status of a national standard, either by publication of an identical text or by endorsement, at the latest by December 2013, and conflicting national standards shall be withdrawn at the latest by December 2013.

Attention is drawn to the possibility that some of the elements of this document may be the subject of patent rights. CEN [and/or CENELEC] shall not be held responsible for identifying any or all such patent rights.

According to the CEN-CENELEC Internal Regulations, the national standards organizations of the following countries are bound to implement this European Standard: Austria, Belgium, Bulgaria, Croatia, Cyprus, Czech Republic, Denmark, Estonia, Finland, Former Yugoslav Republic of Macedonia, France, Germany, Greece, Hungary, Iceland, Ireland, Italy, Latvia, Lithuania, Luxembourg, Malta, Netherlands, Norway, Poland, Portugal, Romania, Slovakia, Slovenia, Spain, Sweden, Switzerland, Turkey and the United Kingdom.

## iTeh STANDARD PREVIEW (standards.iteh.ai)

[SIST EN 16337:2013](https://standards.iteh.ai/catalog/standards/sist/6ac008d3-2a31-4b9b-8ece-21ed8eb73261/sist-en-16337-2013)

<https://standards.iteh.ai/catalog/standards/sist/6ac008d3-2a31-4b9b-8ece-21ed8eb73261/sist-en-16337-2013>

**EN 16337:2013 (E)****1 Scope**

This European Standard specifies test methods for the verification of the loading capacity of shelf supports.

This standard does not apply to ceiling attached shelf support systems.

The tests consist of the application of vertical loads and forces simulating normal functional use, as well as misuse that might reasonably be expected to occur.

With the exception of the corrosion test in 6.4, the tests are designed to evaluate properties without regard to materials, design/construction or manufacturing processes.

The strength tests include only the shelf supports and their components as well as the attachment to the cabinet and/or to the wall. If the shelf support has additional functions, e.g. as a connector or as an extension element, these are not covered by this standard.

The test results are only valid for the shelf supports tested. The results may be used to represent the performance of production models provided that the tested model is representative of the production model.

The test results can only be used as a guide to the performance of the shelf supports.

With the exception of the corrosion test, ageing and influences of temperature and humidity are not included.

Annex A (normative) includes requirements for product information.

Annex B (normative) includes test parameters.

Annex C (informative) includes method for the determination of loading capacity.

<https://standards.iteh.ai/catalog/standards/sist/6ac008d3-2a31-4b9b-8ece-21ed8eb73261/sist-en-16337-2013>

**2 Normative references**

The following documents, in whole or in part, are normatively referenced in this document and are indispensable for its application. For dated references, only the edition cited applies. For undated references, the latest edition of the referenced document (including any amendments) applies.

EN 320, *Particleboards and fibreboards - Determination of resistance to axial withdrawal of screws*

EN 323, *Wood-based panels - Determination of density*

EN 14322, *Wood-based panels - Melamine faced boards for interior uses - Definition, requirements and classification*

EN ISO 6270-2, *Paints and varnishes - Determination of resistance to humidity - Part 2: Procedure for exposing test specimens in condensation-water atmospheres (ISO 6270-2)*

ISO 7619-2, *Rubber, vulcanized or thermoplastic — Determination of indentation hardness — Part 2: IRHD pocket meter method*

### 3 Terms and definitions

For the purposes of this document, the following terms and definitions apply.

#### 3.1

##### **loading capacity $M$**

mass in kg, for one shelf support as specified by the manufacturer for which the shelf support will fulfil the strength requirements specified in this standard

### 4 General test condition

#### 4.1 Preliminary preparation

The shelf supports shall be mounted/assembled according to the instructions supplied with them. The most adverse configuration shall be used and the mounting/assembly method shall be recorded in the test report.

In case of wall mounted shelf supports more than one shelf may shall be mounted and tested.

Any fixing of the shelf supports to the test wall shall be such that its strength does not influence the test result.

If mounting or assembly instructions are not supplied, the most adverse configuration shall be used and the mounting or assembly method shall be recorded in the test report.

Fittings shall be tightened before testing and shall not be re-tightened unless specifically required in the manufacturer's instructions. If the configuration shall be changed to produce the worst-case conditions, this shall be recorded in the test report.

The tests shall be carried out in indoor ambient conditions at a temperature between 15 °C and 25 °C. If during a test the temperature is outside of the range of 15 °C to 25 °C, the maximum and/or minimum temperature shall be recorded in the test report.

Shelf supports which include structural hardware parts made of hygroscopic plastic materials, e.g. polyamide shall be conditioned at  $(23 \pm 5)$  °C and a relative humidity of  $(50 \pm 5)$  % for at least 7 days before testing.

Before beginning the testing, visually inspect the shelf supports thoroughly. Record any defects so that they are not assumed to have been caused by the tests. Carry out measurements when specified.

#### 4.2 Test equipment

##### 4.2.1 Test wall

A rigid and flat surface constructed in a way that the deformation under the applied load is no more than 1 mm.

##### 4.2.2 Particle board properties

The properties of the particle board shall be as specified in Table 1.

The thickness tolerance shall be  $\pm 0,3$  mm.

Table 1 — Particle board properties

Property	Referenced standard	Requirement
Axial withdrawal of screws	EN 320	(1 100 ± 100) N
Density	EN 323	(650 ± 50) kg/m <sup>3</sup>

#### 4.2.3 Melamine faced particleboard

The melamine faced particleboard used for the shelf shall be according to EN 14322.

#### 4.2.4 Steel impact plates

Two steel impact plates, each one faced with a 3 mm thick layer of rubber with hardness of (85 ± 10) IRHD according to ISO 7619-2:

- a 2,5 kg impact plate, 200 mm × 160 mm × 10 mm;
- a 1,7 kg impact plate, 200 mm × 109 mm × 10 mm.

#### 4.2.5 Masses

Masses shall be designed so that they do not reinforce the structure or re-distribute the stresses.

NOTE Steel masses with a length of 85 mm, a width of 50 mm, a thickness of 30 mm and a mass of 1 kg are suitable.

#### 4.3 Tolerances (allowed variation from the nominal values)

Unless otherwise stated, the following tolerances are applicable to the test equipment:

Forces: ± 5 % of the nominal force;

Masses: ± 1 % of the nominal mass;

Dimensions: ± 1 mm of the nominal dimension;

Angles: ± 0,2° of the nominal angle.

NOTE For the purposes of uncertainty measurement, test results are not considered to be adversely affected when the above tolerances are met.

### 5 Test set-up

The test set-up shall be as follows:

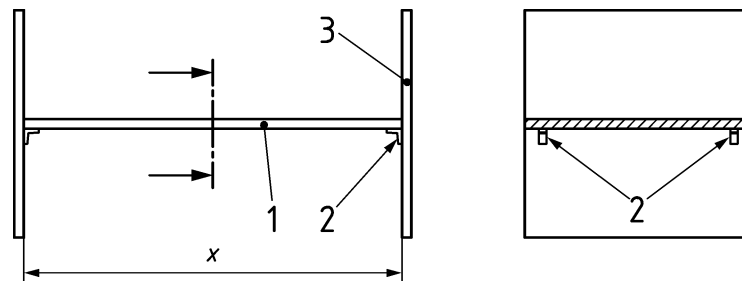
- a) the test set-up (except shelves) shall be constructed so that the deformation under the applied loads is no more than 1 mm;
- b) for cabinet mounted shelf supports the sides for wooden materials (Figure 1, Pos. 3) shall be 19 mm reference particle board (see Table 1) with a depth of 600 mm (test shelf A) or 300 mm (test shelf B); the sides for other materials, e.g. glass, metal or plastic shall be as specified by the manufacturer; the clear distance between the sides shall be 1 000 mm, unless otherwise specified; the centre of the shelf supports shall be positioned 37 mm from the front and rear of the sides; or

for wall mounted shelf supports (see Figure 2), the test wall (4.2.1) shall be used; the distance between the shelf supports shall be as specified by the manufacturer;



- c) the shelf (Figure 1, Pos. 1) shall be 19 mm melamine faced particle board (4.2.3), the depth shall be 600 mm (shelf A) or 300 mm (shelf B) or as specified by the manufacturer, the length shall be 0,5 mm to 1,0 mm (where the tolerance according to 4.3 does not apply) shorter than the clear distance between the sides (Figure 1, x);

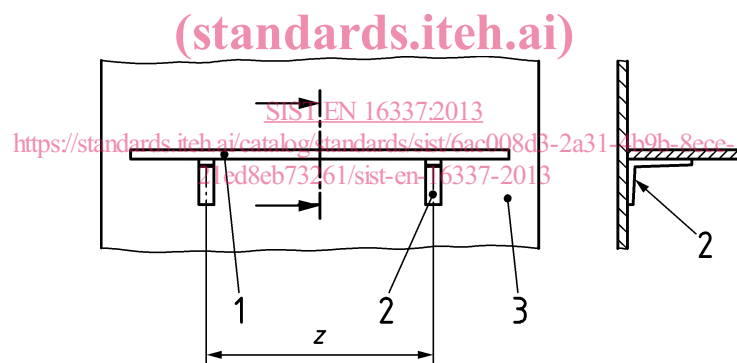
the height from the bottom of the test frame to the shelf support shall be 100 mm or more.



#### Key

- 1 shelf (5. c)
- 2 cabinet mounted shelf supports (5. b)
- 3 particleboard sides (5. b)
- x clear distance between the sides (5. b)

Figure 1 — Test set-up example, cabinet mounted shelf supports



#### Key

- 1 shelf (5. c)
- 2 wall mounted shelf supports (5. b)
- 3 test wall (4.2.1)
- z centre to centre distance between the shelf supports (5. b)

Figure 2 — Test set-up example, wall mounted shelf supports

## 6 Test procedures and requirements

### 6.1 General

For the following tests, two sets of shelf supports shall be used as follows:

- a) the first set shall be used for the impact test and the sustained load test specified in 6.3.2 and 6.3.3;
- b) the second set shall be used for corrosion test specified in 6.4, if relevant.