



# SLOVENSKI STANDARD

## kSIST FprEN 1594:2013

01-april-2013

---

### Infrastruktura za plin - Cevovodni sistemi za največji delovni tlak nad 16 bar - Funkcionalne zahteve

Gas infrastructure - Pipelines for maximum operating pressure over 16 bar - Functional requirements

Gasversorgungssysteme - Rohrleitungen für einen maximal zulässigen Betriebsdruck über 16 bar - Funktionale Anforderungen

Systèmes d'alimentation en gaz - Canalisations pour pression maximale de service supérieure à 16 bar - Prescriptions fonctionnelles

**Ta slovenski standard je istoveten z: FprEN 1594**

<https://standards.iteh.ai/catalog/standards/sist/194cef04-5f73-4c1a-bccc-cb66e945e2fe/sist-en-1594-2013>

---

#### **ICS:**

91.140.40      Sistemi za oskrbo s plinom      Gas supply systems

**kSIST FprEN 1594:2013**

**en,fr,de**



EUROPEAN STANDARD  
NORME EUROPÉENNE  
EUROPÄISCHE NORM

**FINAL DRAFT**  
**FprEN 1594**

January 2013

ICS 23.040.01; 75.200

Will supersede EN 1594:2009

English Version

## Gas infrastructure - Pipelines for maximum operating pressure over 16 bar - Functional requirements

Systèmes d'alimentation en gaz - Canalisations pour  
pression maximale de service supérieure à 16 bar -  
Prescriptions fonctionnelles

Gasversorgungssysteme - Rohrleitungen für einen maximal  
zulässigen Betriebsdruck über 16 bar - Funktionale  
Anforderungen

This draft European Standard is submitted to CEN members for unique acceptance procedure. It has been drawn up by the Technical Committee CEN/TC 234.

If this draft becomes a European Standard, CEN members are bound to comply with the CEN/CENELEC Internal Regulations which stipulate the conditions for giving this European Standard the status of a national standard without any alteration.

This draft European Standard was established by CEN in three official versions (English, French, German). A version in any other language made by translation under the responsibility of a CEN member into its own language and notified to the CEN-CENELEC Management Centre has the same status as the official versions.

CEN members are the national standards bodies of Austria, Belgium, Bulgaria, Croatia, Cyprus, Czech Republic, Denmark, Estonia, Finland, Former Yugoslav Republic of Macedonia, France, Germany, Greece, Hungary, Iceland, Ireland, Italy, Latvia, Lithuania, Luxembourg, Malta, Netherlands, Norway, Poland, Portugal, Romania, Slovakia, Slovenia, Spain, Sweden, Switzerland, Turkey and United Kingdom.

Recipients of this draft are invited to submit, with their comments, notification of any relevant patent rights of which they are aware and to provide supporting documentation.

**Warning** : This document is not a European Standard. It is distributed for review and comments. It is subject to change without notice and shall not be referred to as a European Standard.



EUROPEAN COMMITTEE FOR STANDARDIZATION  
COMITÉ EUROPÉEN DE NORMALISATION  
EUROPÄISCHES KOMITEE FÜR NORMUNG

Management Centre: Avenue Marnix 17, B-1000 Brussels

## Contents

Page

Foreword.....	6
Introduction .....	7
1 Scope .....	8
2 Normative references .....	10
3 Terms, definitions, symbols and abbreviations .....	12
4 Quality and management systems.....	16
5 Safety and the environment.....	17
5.1 General.....	17
5.2 Appropriate safety measures .....	17
5.3 Routing considerations.....	18
5.3.1 General.....	18
5.3.2 Surveys .....	18
5.3.3 Environmental impact .....	18
5.3.4 Ground conditions.....	18
5.4 Line valve spacing .....	19
6 Pressure safety .....	19
6.1 Pressure levels.....	19
6.2 Normal operation .....	19
6.3 Requirements for installation of pressure safety devices .....	20
6.4 Pipeline with DP equal to or less than 40 bar and hoop stress equal to or less than 0,45 $R_{t0,5}$ .....	20
6.5 Pipeline with DP equal to or less than 24 bar and hoop stress equal to or less than 0,30 $R_{t0,5}$ .....	20
7 Design .....	21
7.1 General.....	21
7.1.1 Design principles .....	21
7.1.2 Basis of design .....	21
7.2 Wall thickness determination .....	22
7.2.1 Straight pipe .....	22
7.2.2 Bends and elbows .....	23
7.3 Additional design requirements.....	23
7.3.1 Forces .....	23
7.3.2 Soil engineering data required .....	24
7.3.3 Structural models for pipeline sections .....	24
7.4 Analysis of stress and strain .....	25
7.4.1 Elastic and extended elastic design .....	25
7.4.2 Limit state design .....	26
7.5 Design report.....	27
7.6 Land management and geotechnical studies.....	28
7.7 Depth of cover.....	28
7.8 Casing pipes.....	29
7.9 Station design .....	29
7.9.1 Layout .....	29
7.9.2 Components .....	30
7.9.3 Interaction with onland pipeline section .....	30
7.9.4 Station pipework .....	31
7.10 Pipeline components.....	31
7.11 Pigging suitability .....	31
7.12 Arrangements for venting .....	31

7.13	Corrosion protection.....	32
7.13.1	General .....	32
7.13.2	External coating.....	32
7.13.3	Cathodic protection.....	33
7.14	Grid connections .....	34
8	Materials and components .....	34
8.1	General requirements .....	34
8.1.1	Base material .....	34
8.1.2	Manufacturing.....	34
8.1.3	Weldability.....	34
8.1.4	Mechanical properties.....	35
8.1.5	Inspection documents .....	37
8.1.6	Other steel types or grades .....	37
8.1.7	Records .....	37
8.2	Pipes .....	37
8.3	Fittings.....	37
8.3.1	General .....	37
8.3.2	Manufacturing.....	38
8.4	Flanged connections.....	38
8.5	Insulating connections .....	38
8.5.1	Type test.....	38
8.5.2	Strength test .....	38
8.5.3	Electrical test .....	38
8.5.4	External tightness test.....	39
8.6	Valves .....	39
8.7	External and internal coatings .....	39
8.8	End preparation .....	39
9	Construction .....	39
9.1	General .....	39
9.2	Execution of work.....	39
9.2.1	General .....	39
9.2.2	Marking out the site.....	39
9.2.3	Initial site inspections.....	40
9.2.4	Working strip .....	40
9.2.5	Separation of topsoil.....	40
9.2.6	Trenches.....	40
9.2.7	Crossing and proximity of buried structures (cables and pipes) .....	41
9.2.8	Handling and stringing .....	41
9.2.9	Bends.....	41
9.2.10	Welding and weld examination .....	42
9.2.11	External coating.....	42
9.2.12	Lowering into the trench.....	44
9.2.13	Ballasting, anchoring .....	45
9.2.14	Tie-ins .....	45
9.2.15	Backfill .....	45
9.2.16	Reinstatement.....	45
9.2.17	Markings.....	46
9.2.18	Final site inspection with owners and users .....	46
9.3	Special crossings .....	46
9.3.1	General .....	46
9.3.2	Open-trench road or path crossings .....	46
9.3.3	Trenchless crossings.....	46
9.3.4	Requirements for casings .....	49
9.3.5	Open trench major water crossings .....	49
9.3.6	Horizontal Directional Drilling (HDD).....	49
9.4	Cleaning .....	50
9.5	Testing .....	51
9.5.1	General .....	51
9.5.2	Test preparation .....	51

## FprEN 1594:2013 (E)

9.5.3	Strength test.....	51
9.5.4	Tightness test.....	52
9.5.5	Pre-testing .....	52
9.5.6	Dewatering.....	52
9.5.7	Golden welds.....	52
9.6	Acceptance.....	52
9.6.1	As built records.....	52
9.6.2	Precommissioning.....	53
9.6.3	Handover and documentation.....	53
10	Operation and maintenance .....	53
10.1	General.....	53
10.1.1	Policy .....	53
10.1.2	Safety and environment .....	54
10.2	Organisation.....	54
10.3	Operating and maintenance instructions.....	54
10.4	Emergency plan .....	55
10.5	Records and documentation .....	55
10.6	Commissioning.....	56
10.7	Decommissioning .....	56
10.8	Recommissioning .....	56
10.9	Maintenance, modification and repair .....	56
10.9.1	General.....	56
10.9.2	Pipeline surveillance, inspection and monitoring.....	56
10.9.3	Execution of repairs and modifications .....	57
10.9.4	Work involving cutting of the pipeline.....	57
10.9.5	Work on in-service pipelines .....	57
10.9.6	Repairs after Emergency .....	58
10.9.7	Other and special maintenance activities .....	58
10.10	Abandonment.....	59
Annex A	(informative) Settlement areas .....	60
A.1	General.....	60
A.2	Procedure .....	60
A.3	Construction settlement .....	60
A.4	Strength calculation .....	61
A.4.1	Interaction between pipe and soil: pipeline considered as beam .....	62
A.4.2	Simplified calculation method.....	63
A.5	Monitoring .....	65
A.6	Action in the event of the allowable/limit values being exceeded.....	65
A.7	Bibliography.....	65
Annex B	(informative) Mining subsidence.....	66
B.1	General.....	66
B.2	Procedure .....	66
B.3	Strength calculation .....	66
B.4	Action in the event of the allowable/limit values being exceeded.....	67
B.5	Monitoring .....	67
B.6	Bibliography.....	67
Annex C	(informative) Frost heave .....	68
C.1	General.....	68
C.2	Procedure .....	68
C.3	Strength calculation .....	68
C.4	Other possible measures .....	68
C.5	Bibliography.....	69
Annex D	(informative) Landslide areas.....	70
D.1	General.....	70
D.2	Procedure .....	70
D.3	Strength calculation .....	71
D.4	Possible action to prevent the allowable/limit values being exceeded .....	71
D.5	Monitoring .....	72

<b>D.6</b>	<b>Bibliography</b> .....	<b>72</b>
<b>Annex E</b>	<b>(informative) Areas with high seismic risk</b> .....	<b>74</b>
<b>E.1</b>	<b>General</b> .....	<b>74</b>
<b>E.2</b>	<b>Procedure</b> .....	<b>74</b>
<b>E.3</b>	<b>Strength calculation</b> .....	<b>75</b>
<b>E.3.1</b>	<b>Vibratory ground motion (shaking)</b> .....	<b>75</b>
<b>E.3.2</b>	<b>Permanent ground movement</b> .....	<b>76</b>
<b>E.3.3</b>	<b>Possible action to prevent the allowable/limit values being exceeded</b> .....	<b>76</b>
<b>E.4</b>	<b>Bibliography</b> .....	<b>76</b>
<b>Annex F</b>	<b>(informative) Soil mechanics parameters</b> .....	<b>78</b>
<b>F.1</b>	<b>Parameters</b> .....	<b>78</b>
<b>F.2</b>	<b>Soil engineering study</b> .....	<b>79</b>
<b>F.3</b>	<b>Bibliography</b> .....	<b>79</b>
<b>Annex G</b>	<b>(informative) Bored/jacked crossings</b> .....	<b>81</b>
<b>G.1</b>	<b>General</b> .....	<b>81</b>
<b>G.2</b>	<b>Strength calculation</b> .....	<b>81</b>
<b>G.2.1</b>	<b>Horizontal directional drilling</b> .....	<b>81</b>
<b>G.2.2</b>	<b>Jacked/bored crossings</b> .....	<b>84</b>
<b>G.3</b>	<b>Bibliography</b> .....	<b>85</b>
<b>Annex H</b>	<b>(informative) Allowable pulsation and vibration levels</b> .....	<b>86</b>
<b>H.1</b>	<b>Introduction</b> .....	<b>86</b>
<b>H.2</b>	<b>Pulsations</b> .....	<b>86</b>
<b>H.2.1</b>	<b>General</b> .....	<b>86</b>
<b>H.2.2</b>	<b>Allowable pulsation levels</b> .....	<b>86</b>
<b>H.3</b>	<b>Pipe vibrations</b> .....	<b>86</b>
<b>H.3.1</b>	<b>General</b> .....	<b>86</b>
<b>H.3.2</b>	<b>Criteria for vibration levels</b> .....	<b>87</b>
<b>H.4</b>	<b>Induced effects</b> .....	<b>87</b>
<b>H.5</b>	<b>Bibliography</b> .....	<b>87</b>
<b>Annex I</b>	<b>(informative) Allowable vibration levels from construction work - blasting</b> .....	<b>88</b>
<b>I.1</b>	<b>General</b> .....	<b>88</b>
<b>I.2</b>	<b>Procedure</b> .....	<b>88</b>
<b>I.3</b>	<b>Strength calculation</b> .....	<b>88</b>
<b>I.4</b>	<b>Bibliography</b> .....	<b>89</b>
<b>Annex J</b>	<b>(informative) Significant technical changes between this European Standard and the previous edition</b> .....	<b>91</b>
	<b>Bibliography</b> .....	<b>93</b>

## Foreword

This document (FprEN 1594:2013) has been prepared by Technical Committee CEN/TC 234 "Gas infrastructure", the secretariat of which is held by DIN.

This document is currently submitted to the Unique Acceptance Procedure.

This document will supersede EN 1594:2009.

This document has been prepared under mandate M/017 given to CEN by the European Commission and the European Free Trade Association.

Annex J provides details of significant technical changes between this European Standard and the previous edition.

There is a complete suite of functional standards prepared by CEN/TC 234 "Gas infrastructure" to cover all parts of the gas infrastructure from the input of gas to the transmission system up to the inlet connection of the gas appliances, whether for domestic, commercial or industrial purposes.

Compliance to this standard ensures the interoperability, safety and reliability requirements of pipeline systems.

Directive 2009/73/EC concerning common rules for the internal market in natural gas and the related Regulation (EC) No 715/2009 on conditions for access to the natural gas transmission networks also aim at technical safety (security) including technical reliability of the European gas system. These aspects are also in the scope of CEN/TC 234 standardisation. In this respect, CEN/TC 234 evaluated the indicated EU legislation and amended this technical standard accordingly, where required and appropriate.

A list of the relevant functional standards prepared by CEN/TC 234 is included in Clause 2 and the Bibliography of this document.

CEN/TC 234 will continue its work updating this European Standard to the latest developments at regular intervals. <http://standards.iteh.ai/catalog/standards/sist/194ccf04-5f73-4c1a-bccc-cb66e945e2fe/sist-en-1594-2013>

In preparing this European Standard, a basic understanding of gas supply by the user has been assumed.

Gas infrastructure is complex and the importance on safety of their construction and use has led to the development of very detailed codes of practice and operating manuals in member countries. These detailed statements embrace recognised standards of gas engineering and specific requirements imposed by legal structures of these member countries.



## Introduction

This European Standard describes the general functional requirements for gas supply through pipe systems and covers the pressure range greater than 16 bar maximum operating pressure (MOP) for steel systems. It gives normative and informative references for safe and secure gas infrastructure. It applies to their design, construction, operation and the related aspects of safety, environment and public health, all in order to provide a safe and secure supply of gas.

The requirements of this European Standard are based on safe gas engineering practice under conditions normally encountered in the gas industry. Requirements for all unusual conditions cannot be specifically provided for, nor are all engineering and construction details prescribed.

Existing industrial safety regulations applying to work areas, safety devices and safe work practices are not intended to be supplanted by this European Standard.

Managers with responsibilities for the design, construction and operation of gas infrastructure will have regard to the guidance given in this European Standard and to other relevant standards. It is the responsibility of these managers and engineers to apply these functional requirements, supplemented with other proven good practice to the particular circumstances of all gas infrastructures.

The designer, constructor or operator of pipeline systems is cautioned that this European Standard is not a design handbook or code of practice. Additional national or company standards describing the details are needed. These detailed standards should be in line with the basic principles of this European Standard.

In preparing this European Standard it was recognised that the suite of relevant European Standards is incomplete. Reference may be made where appropriate to international, national or other standards until relevant European Standards are available.

## Document Preview

[SIST EN 1594:2013](https://standards.iteh.ai/catalog/standards/sist/194ccf04-5f73-4c1a-bccc-cb66e945e2fe/sist-en-1594-2013)

<https://standards.iteh.ai/catalog/standards/sist/194ccf04-5f73-4c1a-bccc-cb66e945e2fe/sist-en-1594-2013>

## 1 Scope

This European Standard is applicable to pipelines with a maximum operating pressure (MOP) over 16 bar for the carriage of processed, non-toxic and non-corrosive natural gas according to EN ISO 13686 in onland gas infrastructure.

This European Standard is also applicable to pipelines with a maximum operating pressure (MOP) over 16 bar for the carriage of non-conventional gases such as injected biomethane, complying with EN ISO 13686 and for which a detailed technical evaluation of the functional requirements is performed ensuring there are no other constituents or properties of the gases that can affect the integrity of the pipeline.

Onland gas infrastructure is where:

- pipeline elements are made of unalloyed or low-alloyed carbon steel;
- pipeline elements are joined by welds, flanges or mechanical couplings;
- the pipeline is not located within commercial or industrial premises as an integral part of the industrial process on these premises except for any pipelines and facilities supplying such premises;
- the design temperature of the system is between -40 °C and 120 °C inclusive.

This European Standard applies to onshore pipeline systems from the point where the pipeline first crosses what is normally accepted as battery limit between on and offshore, e.g.:

- first isolation valve;
- the base of steep sea shelf;
- above the high water/low water mark onto mainland;
- an island.

This European Standard also applies to a pipeline system with a starting point onshore, also when parts of the pipeline system on the mainland subsequently cross fjords, lakes etc. <https://standards.iteh.ai/>

<https://standards.iteh.ai/catalog/standards/sist/194ccf04-5f73-4c1a-bccc-cb66e945e2fe/sist-en-1594-2013>

This European Standard does not apply to existing pipelines, in use prior to the publication of this European Standard, nor to modifications to existing pipelines.

Gas infrastructures covered by this European Standard begin after the gas producer's metering station. The functional demarcation of the pipeline system within a plant area will be determined from case to case. Generally speaking, this will be directly after the first isolating valve of the installation.

This European Standard also describes the mechanical requirements for pipework in stations with a maximum operating pressure greater than 16 bar. Welding requirements are described in a special application standard on welding for gas infrastructures EN 12732. Functional requirements for stations are given in:

EN 1776, *Gas supply systems — Natural gas measuring stations — Functional requirements*

EN 1918-5, *Gas supply systems — Underground gas storage — Part 5: Functional recommendations for surface facilities*

EN 12186, *Gas supply systems — Gas pressure regulating stations for transmission and distribution — Functional requirements*

EN 12583, *Gas supply systems — Compressor stations — Functional requirements*

This European Standard specifies common basic principles for gas infrastructures. Users of this European Standard should be aware that there may exist more detailed national standards and codes of practice in the CEN member countries.

This European Standard is intended to be applied in association with these national standards and/or codes of practice setting out the above mentioned principles.

In the event of conflicts in terms of more restrictive requirements in the national legislation/regulation with the requirements of this European Standard, the national legislation/regulation shall take precedence as illustrated in CEN/TR 13737 (all parts).

NOTE CEN/TR 13737 (all parts) contains:

- clarification of relevant legislation/regulations applicable in a country;
- if appropriate, more restrictive national requirements;
- national contact point for the latest information.

In the event of conflicts in terms of more restrictive requirements in national legislation/regulation with the requirements of this standard, the national legislation/regulation takes precedence

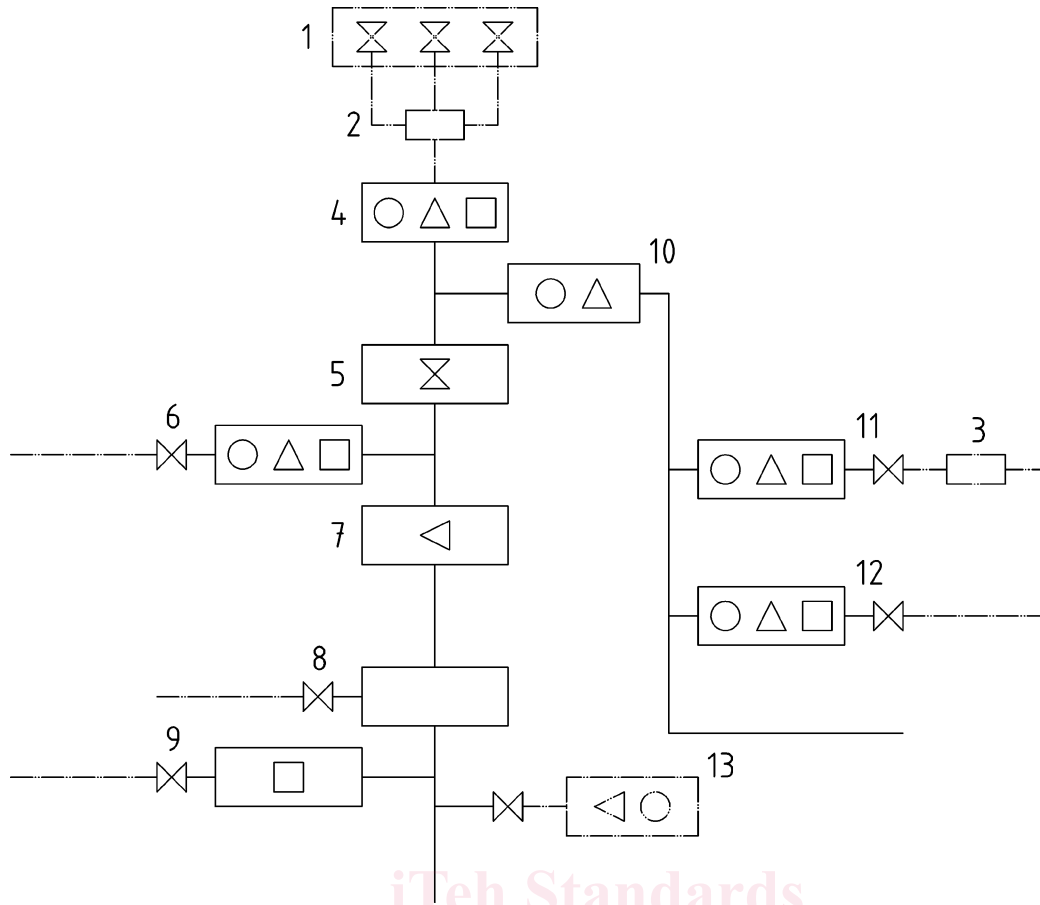
Reference is made in this European Standard to relevant European and other recognised standards for products used to construct and operate gas infrastructures.

A schematic representation of pipelines for gas transmission is given in Figure 1.

## iTeh Standards (<https://standards.iteh.ai>) Document Preview

[SIST EN 1594:2013](https://standards.iteh.ai/catalog/standards/sist/194ccf04-5f73-4c1a-bccc-cb66e945e2fe/sist-en-1594-2013)

<https://standards.iteh.ai/catalog/standards/sist/194ccf04-5f73-4c1a-bccc-cb66e945e2fe/sist-en-1594-2013>



**Key**

		Stations
	pipelines covered by this standard	1 P – well, production
	pipelines not covered by this standard	2 T – treatment
	pressure regulation	3 D – odourisation
	pressure safety system	4 S 1 – gas receiving
	metering system	5 S 2 – valve station
	compression	6 S 3 – delivery station
	valve	7 S 4 – compressor station
	isolation device	8 S 5 – other supply (e. g. for blending)
		9 S 6 – export or import
		10 S 7 – pressure regulating
		11 S 8 – domestic distribution
		12 S 9 – industrial distribution
		13 S 10 – storage

**Figure 1 — Schematic representation of pipelines for gas supply over 16 bar**

**2 Normative references**

The following documents, in whole or in part, are normatively referenced in this document and are indispensable for its application. For dated references, only the edition cited applies. For undated references, the latest edition of the referenced document (including any amendments) applies.

EN 1515-3, *Flanges and their joints — Bolting — Part 3: Classification of bolt materials for steel flanges, class designated*

EN 1759-1, *Flanges and their joint — Circular flanges for pipes, valves, fittings and accessories, Class designated — Part 1: Steel flanges, NPS 1/2 to 24*

EN 10002-1, *Metallic materials — Tensile testing — Part 1: Method of test at ambient temperature*

EN 10204:2004, *Metallic products — Types of inspection documents*

EN 10208-2, *Steel pipes for pipelines for combustible fluids — Technical delivery conditions — Part 2: Pipes of requirement class B*

EN 10288, *Steel tubes and fittings for onshore and offshore pipelines — External two-layer extruded polyethylene based coatings*

EN 10289, *Steel tubes and fittings for onshore and offshore pipelines — External liquid applied epoxy and epoxy-modified coatings*

EN 10290, *Steel tubes and fittings for onshore and offshore pipelines — External liquid applied polyurethane and polyurethane-modified coatings*

EN 10301, *Steel tubes and fittings for on and offshore pipelines — Internal coating for the reduction of friction for conveyance of non-corrosive gas*

EN 12068, *Cathodic protection — External organic coatings for the corrosion protection of buried or immersed steel pipelines used in conjunction with cathodic protection — Tapes and shrinkable materials*

EN 12186, *Gas supply systems — Gas pressure regulating stations for transmission and distribution — Functional requirements*

EN 12327, *Gas infrastructure — Pressure testing, commissioning and decommissioning procedures — Functional requirements*

EN 12560-1, *Flanges and their joints — Gaskets for Class-designated flanges — Part 1: Non-metallic flat gaskets with or without inserts*

EN 12560-2, *Flanges and their joints — Gaskets for Class-designated flanges — Part 2: Spiral wound gaskets for use with steel flanges*

EN 12560-3, *Flanges and their joints — Gaskets for Class-designated flanges — Part 3: Non-metallic PTFE envelope gaskets*

EN 12560-4, *Flanges and their joints — Gaskets for Class-designated flanges — Part 4: Corrugated, flat or grooved metallic and filled metallic gaskets for use with steel flanges*

EN 12583, *Gas infrastructure — Compressor stations — Functional requirements*

EN 12732, *Gas infrastructure — Welding steel pipework — Functional requirements*

EN 12954, *Cathodic protection of buried or immersed metallic structures — General principles and application for pipelines*

EN 14141, *Valves for natural gas transportation in pipelines — Performance requirements and tests*

prEN 16348, *Gas infrastructure – Safety Management System (SMS) for gas transmission infrastructure and Pipeline Integrity Management System (PIMS) for gas transmission pipelines – Functional requirements*

### 3 Terms, definitions, symbols and abbreviations

For the purposes of this document, the following terms and definitions apply. Symbols used in formulae are defined where they occur.

**3.1  
abandonment**  
permanent decommissioning where a pipeline or a pipeline section is physically isolated from the gas pipeline system

**3.2  
casing**  
protection by means of a construction around the pipeline in order to prevent external loads, or third party interference

**3.3  
commissioning**  
activities required to pressurise pipework, stations, equipment and assemblies with gas and to put them into operation

**3.4  
control zone**  
strip of land over which the pipeline operator has a right to control activities

**3.5  
decommissioning**  
activities required to take out of service any pipework, station, equipment or assemblies filled with gas and to disconnect them from the system

**3.6  
design factor**  
 $f_0$   
factor applied when calculating the wall thickness or pressure

**3.7  
design pressure**  
**DP**  
pressure on which design calculations are based

**3.8  
design temperature**  
temperature on which design calculations are based

**3.9  
emergency**  
situation which could affect the safe operation of the gas infrastructure and/or the safety of the surrounding area, requiring urgent action

**3.10  
gas**  
gaseous fuel which is in gaseous state at a temperature of 15 °C under atmospheric pressure (1,013 25 bar absolute)

**3.11  
gas distribution system**  
pipeline system including piping above and below ground and all other equipment necessary to supply the gas to the consumers