

EUROPEAN STANDARD
NORME EUROPÉENNE
EUROPÄISCHE NORM

DRAFT
EN 747-2:2012

prA1

September 2013

ICS 97.140

English Version

Furniture - Bunk beds and high beds - Part 2: Test methods

Meubles - Lits superposés et lits surélevés - Partie 2:
Méthodes d'essai

Möbel - Etagenbetten und Hochbetten - Teil 2:
Prüfverfahren

This draft amendment is submitted to CEN members for enquiry. It has been drawn up by the Technical Committee CEN/TC 207.

This draft amendment A1, if approved, will modify the European Standard EN 747-2:2012. If this draft becomes an amendment, CEN members are bound to comply with the CEN/CENELEC Internal Regulations which stipulate the conditions for inclusion of this amendment into the relevant national standard without any alteration.

This draft amendment was established by CEN in three official versions (English, French, German). A version in any other language made by translation under the responsibility of a CEN member into its own language and notified to the CEN-CENELEC Management Centre has the same status as the official versions.

CEN members are the national standards bodies of Austria, Belgium, Bulgaria, Croatia, Cyprus, Czech Republic, Denmark, Estonia, Finland, Former Yugoslav Republic of Macedonia, France, Germany, Greece, Hungary, Iceland, Ireland, Italy, Latvia, Lithuania, Luxembourg, Malta, Netherlands, Norway, Poland, Portugal, Romania, Slovakia, Slovenia, Spain, Sweden, Switzerland, Turkey and United Kingdom.

Recipients of this draft are invited to submit, with their comments, notification of any relevant patent rights of which they are aware and to provide supporting documentation.

Warning : This document is not a European Standard. It is distributed for review and comments. It is subject to change without notice and shall not be referred to as a European Standard.



EUROPEAN COMMITTEE FOR STANDARDIZATION
COMITÉ EUROPÉEN DE NORMALISATION
EUROPÄISCHES KOMITEE FÜR NORMUNG

Management Centre: Avenue Marnix 17, B-1000 Brussels

Contents

| | Page |
|----------------------------------|------|
| Foreword..... | 3 |
| 1 Modifications to clause 4..... | 4 |
| 2 Modifications to clause 5..... | 4 |

Foreword

This document (EN 747-2:2012/prA1:2013) has been prepared by Technical Committee CEN/TC 207 "Furniture", the secretariat of which is held by UNI.

This document is currently submitted to the CEN Enquiry.

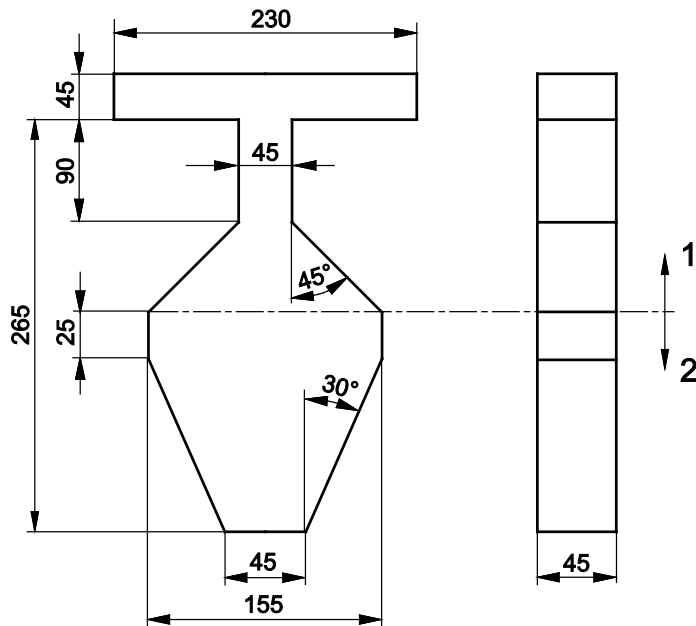
EN 747-2:2012/prA1:2013 (E)

1 Modifications to clause 4

Add a new sub-clause 4.10 as follows:

4.10 Template for V-shaped openings

The template for V and irregular shaped openings shall be made from plastics or other hard, smooth material with the dimensions given in Figure 5. The tolerance for the angles shall be $\pm 1^\circ$.

**Key**

- 1 B portion
- 2 A portion

Figure 5 — V and irregular shaped openings template

2 Modifications to clause 5

Replace clause 5.3 by the following:

"

5.3 Measurements**5.3.1 Holes, gaps and openings**

Check all holes, gaps and openings according to EN 747-1:2012 of this standard as follows:

Table 1 — Cones and forces

| Part 1, clause | Force | Cones |
|----------------|---------------|-----------------------|
| 4.1.2, 4.1.4 | With force | 7 mm |
| 4.1.4 | With force | 5 mm and 75 mm |
| | Without force | 60 mm |
| 4.1.2, 4.1.3 | With force | 25 mm and 75 mm |
| 4.1.2, 4.1.5 | With force | 7 mm, 25 mm and 75 mm |
| | Without force | 12 mm and 60 mm |

Where required, press the 5 mm and 7 mm cones into the gap with a force of 30 N and the 25 mm and 75 mm cones with a force of 100 N. Record whether or not the cone passes through the gap.

All other gaps shall be measured with the appropriate equipment.

"

Add a new sub-clause 5.3.2 with the following texts:

"

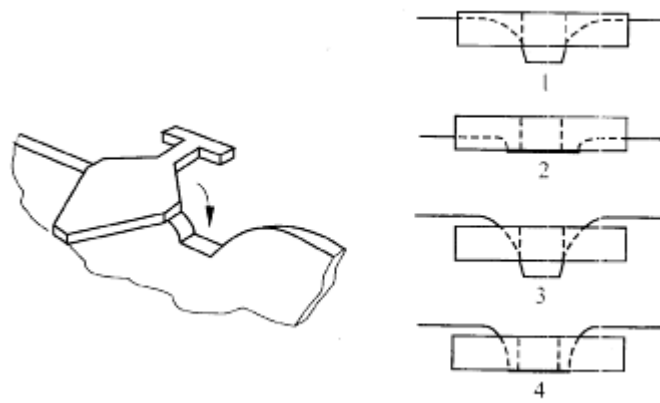
5.3.2 V and irregular shaped holes, gaps and openings

Position the 'B' portion of the template (4.10) between and perpendicular to the boundaries of the opening, as shown in Figure 6 or Figure 7 as appropriate. If the full thickness of the template cannot be inserted there is no hazard, but if the full thickness of the template can be inserted there is a hazard, see Figures 6 and 7.

If the template (4.10) can be inserted to a depth greater than the thickness of the template (45 mm), apply the 'A' portion of the template, so that its centre line is in line with the centre line of the opening.

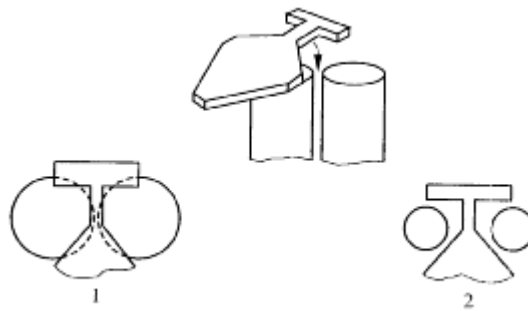
Ensure that the plane of the template is parallel and applied in line with the opening, as shown in Figure 8. Insert the template along the centre line of the opening until its motion is arrested by contact with the boundaries of the opening. If the template touches the bottom of the opening there is no hazard, but if the sides of the template touch the sides of the opening there is a hazard, see Figure 8.

EN 747-2:2012/prA1:2013 (E)

**Key**

1 and 2 are not a hazard

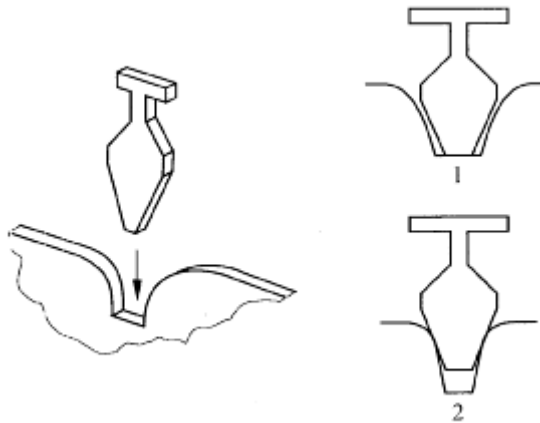
3 and 4 are a hazard

Figure 6 — Method of insertion of portion B**Key**

1 is not a hazard

2 is a hazard

Figure 7 — Method of insertion of portion B

**Key**

1 is not a hazard

2 is a hazard

Figure 8 — Method of insertion of portion A

"

In 5.4.3 add the following at the end of the second paragraph:

"This test shall be carried out on both the upper and lower bed if the constructions differ."

In 5.4.4 replace "(see Figure 5)" at the end of the second paragraph by "(see Figure 9)"

In 5.4.4 replace "(see Figure 5)" in the third paragraph by "(see Figure 9)"

In 5.4.4 renumber Figure 5 as Figure 9 to read:

"Figure 9 – Bed base impact positions"

In 5.4.5 add the following at the end of the second paragraph:

"This test shall be carried out on both the upper and lower bed if the constructions differ."

In 5.4.5 replace "Figure 6" in the second paragraph by "Figure 10"

In 5.4.5 renumber Figure 6 as Figure 10 to read:

"Figure 10 – Durability of bed base loading positions"