

SLOVENSKI STANDARD
SIST EN ISO 140-3:1997/A1:2005
01-junij-2005

Akustika - Merjenje zvočne izolirnosti v zgradbah in zvočne izolirnosti gradbenih elementov - 3. del: Laboratorijska merjenja izolirnosti gradbenih elementov pred zvokom v zraku - Dopolnilo 1: Smernice za namestitvev lahkih dvokrilnih predelitev (ISO 140-3:1995/AM 1:2004)

Acoustics - Measurement of sound insulation in buildings and of building elements - Part 3: Laboratory measurements of airborne sound insulation of building elements - Amendment 1: Installation guidelines for lightweight twin leaf partitions (ISO 140-3:1995/AM 1:2004)

(standards.iteh.ai)

Akustik - Messung der Schalldämmung in Gebäuden und von Bauteilen - Teil 3: Messungen der Luftschalldämmung von Bauteilen in Prüfständen - Änderung 1: Leitfaden zur Befestigung von zweischaligen Leichtbau-Trennwände (ISO 140-3:1995/AM 1:2004)

Acoustique - Mesurage de l'isolement acoustique des immeubles et des éléments de construction - Partie 3: Mesurage en laboratoire de l'affaiblissement des bruits aériens par les éléments de construction - Amendement 1: Conditions particulieres de montage des cloisons a doubles parements légers (ISO 140-3:1995/AM 1:2004)

Ta slovenski standard je istoveten z: EN ISO 140-3:1995/A1:2004

ICS:

17.140.01	Akustična merjenja in blaženje hrupa na splošno	Acoustic measurements and noise abatement in general
91.120.20	Akustika v stavbah. Zvočna izolacija	Acoustics in building. Sound insulation

SIST EN ISO 140-3:1997/A1:2005 **en**

iTeh STANDARD PREVIEW
(standards.iteh.ai)

[SIST EN ISO 140-3:1997/A1:2005](https://standards.iteh.ai/catalog/standards/sist/4bde3742-1068-4b1c-a210-a25d862b92a7/sist-en-iso-140-3-1997-a1-2005)

<https://standards.iteh.ai/catalog/standards/sist/4bde3742-1068-4b1c-a210-a25d862b92a7/sist-en-iso-140-3-1997-a1-2005>

EUROPEAN STANDARD
NORME EUROPÉENNE
EUROPÄISCHE NORM

EN ISO 140-3:1995/A1

December 2004

ICS 91.120.20

English version

Acoustics - Measurement of sound insulation in buildings and of building elements - Part 3: Laboratory measurements of airborne sound insulation of building elements - Amendment 1: Installation guidelines for lightweight twin leaf partitions (ISO 140-3:1995/AM 1:2004)

Acoustique - Mesurage de l'isolement acoustique des immeubles et des éléments de construction - Partie 3: Mesurage en laboratoire de l'affaiblissement des bruits aériens par les éléments de construction - Amendement 1: Conditions particulières de montage des cloisons à doubles parements légers (ISO 140-3:1995/AM 1:2004)

Akustik - Messung der Schalldämmung in Gebäuden und von Bauteilen - Teil 3: Messungen der Luftschalldämmung von Bauteilen in Prüfständen - Änderung 1: Leitfaden zur Befestigung von zweischaligen Leichtbau-Trennwände (ISO 140-3:1995/AM 1:2004)

iTeh STANDARD PREVIEW
(standards.iteh.ai)

This amendment A1 modifies the European Standard EN ISO 140-3:1995; it was approved by CEN on 8 August 2004.

CEN members are bound to comply with the CEN/CENELEC Internal Regulations which stipulate the conditions for inclusion of this amendment into the relevant national standard without any alteration. Up-to-date lists and bibliographical references concerning such national standards may be obtained on application to the Central Secretariat or to any CEN member.

This amendment exists in three official versions (English, French, German). A version in any other language made by translation under the responsibility of a CEN member into its own language and notified to the Central Secretariat has the same status as the official versions.

CEN members are the national standards bodies of Austria, Belgium, Cyprus, Czech Republic, Denmark, Estonia, Finland, France, Germany, Greece, Hungary, Iceland, Ireland, Italy, Latvia, Lithuania, Luxembourg, Malta, Netherlands, Norway, Poland, Portugal, Slovakia, Slovenia, Spain, Sweden, Switzerland and United Kingdom.



EUROPEAN COMMITTEE FOR STANDARDIZATION
COMITÉ EUROPÉEN DE NORMALISATION
EUROPÄISCHES KOMITEE FÜR NORMUNG

Management Centre: rue de Stassart, 36 B-1050 Brussels

EN ISO 140-3:1995/A1:2004 (E)**Foreword**

This document (EN ISO 140-3:1995/A1:2004) has been prepared by Technical Committee CEN/TC 126 "Acoustic properties of building elements and of buildings", the secretariat of which is held by AFNOR, in collaboration with Technical Committee ISO/TC 43 "Acoustics".

This Amendment to the European Standard EN ISO 140-3:1995 shall be given the status of a national standard, either by publication of an identical text or by endorsement, at the latest by June 2005, and conflicting national standards shall be withdrawn at the latest by June 2005.

According to the CEN/CENELEC Internal Regulations, the national standards organizations of the following countries are bound to implement this European Standard: Austria, Belgium, Cyprus, Czech Republic, Denmark, Estonia, Finland, France, Germany, Greece, Hungary, Iceland, Ireland, Italy, Latvia, Lithuania, Luxembourg, Malta, Netherlands, Norway, Poland, Portugal, Slovakia, Slovenia, Spain, Sweden, Switzerland and United Kingdom.

**iTeh STANDARD PREVIEW
(standards.iteh.ai)**

[SIST EN ISO 140-3:1997/A1:2005](https://standards.iteh.ai/catalog/standards/sist/4bde3742-1068-4b1c-a210-a25d862b92a7/sist-en-iso-140-3-1997-a1-2005)

<https://standards.iteh.ai/catalog/standards/sist/4bde3742-1068-4b1c-a210-a25d862b92a7/sist-en-iso-140-3-1997-a1-2005>

Introduction

Evaluation of the results of a European Inter Laboratory Test in 1998 showed that the requirements given in ISO 140-1 are inadequate for lightweight twin partitions therefore the following annex is added.

iTeh STANDARD PREVIEW (standards.iteh.ai)

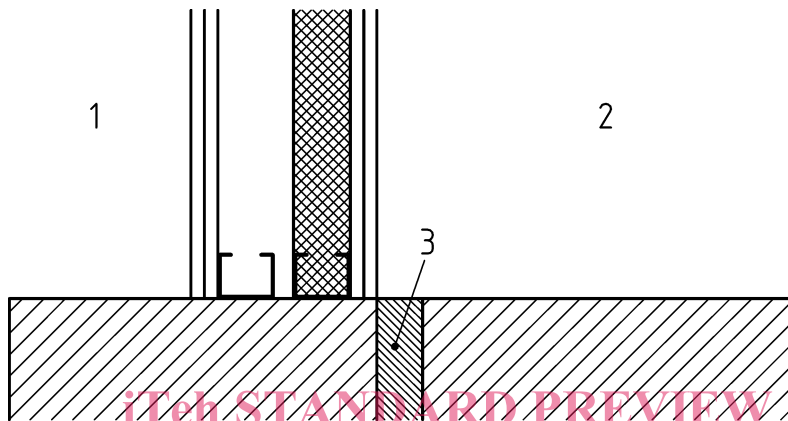
[SIST EN ISO 140-3:1997/A1:2005](https://standards.iteh.ai/catalog/standards/sist/4bde3742-1068-4b1c-a210-a25d862b92a7/sist-en-iso-140-3-1997-a1-2005)

<https://standards.iteh.ai/catalog/standards/sist/4bde3742-1068-4b1c-a210-a25d862b92a7/sist-en-iso-140-3-1997-a1-2005>

Annex H (normative)

Installation guidelines for lightweight twin leaf partitions

The sound reduction index of lightweight twin leaf partitions is influenced by the mounting conditions in the test opening of the laboratory. The important installation parameters are the aperture (niche effect) depth and the position of the partition in relation to the acoustic break in the test aperture.



Key

- 1 source room
- 2 receiving room
- 3 acoustic break of the laboratory

(standards.iteh.ai)

[SIST EN ISO 140-3:1997/A1:2005](https://standards.iteh.ai/catalog/standards/sist/4bde3742-1068-4b1c-a210-a25d862b92a7/sist-en-iso-140-3-1997-a1-2005)

<https://standards.iteh.ai/catalog/standards/sist/4bde3742-1068-4b1c-a210-a25d862b92a7/sist-en-iso-140-3-1997-a1-2005>

Figure H.1 — Example for the position of the specimen relative to the acoustic break of the laboratory

To improve the reproducibility between laboratories and to facilitate comparison of sound reduction indices from different lightweight double wall products, the light weight twin leaf partition shall not be mounted across the acoustical break of the laboratory (Figure H.1). The aperture depth should meet the requirement in 5.2.1, as far as practical.

Other mounting conditions may be used but shall be fully described in the test report.

NOTE Mounting the lightweight partition with one leaf on one side and the other leaf on the other side of the acoustic break may result in higher values for the sound reduction index.

Other mounting conditions may be appropriate for some twin leaf partitions e.g. in semidetached houses where the leaves may be vibrationally decoupled. In such cases the leaves should be mounted on either side of the acoustic break.