



**iTeh STANDARD PREVIEW**  
**(standards.iteh.ai)**

[SIST ISO 5667-20:2010](https://standards.iteh.ai/catalog/standards/sist/f9ec8108-dc82-4f43-ac7a-6a6ee5196a23/sist-iso-5667-20-2010)

<https://standards.iteh.ai/catalog/standards/sist/f9ec8108-dc82-4f43-ac7a-6a6ee5196a23/sist-iso-5667-20-2010>

---

---

**Water quality — Sampling —**

Part 20:

**Guidance on the use of sampling data for  
decision making — Compliance with  
thresholds and classification systems**

iTeh STANDARD PREVIEW

*Qualité de l'eau — Échantillonnage —*

*(standards) iTeh.ai*  
*Partie 20: Lignes directrices relatives à l'utilisation des données  
d'échantillonnage pour la prise de décision — Conformité avec les  
limites et systèmes de classification*

[SIST ISO 5667-20:2010](https://standards.iteh.ai/catalog/standards/sist/f9ec8108-dc82-4f43-ae7a-6a6ee5196a23/sist-iso-5667-20-2010)

<https://standards.iteh.ai/catalog/standards/sist/f9ec8108-dc82-4f43-ae7a-6a6ee5196a23/sist-iso-5667-20-2010>



**PDF disclaimer**

This PDF file may contain embedded typefaces. In accordance with Adobe's licensing policy, this file may be printed or viewed but shall not be edited unless the typefaces which are embedded are licensed to and installed on the computer performing the editing. In downloading this file, parties accept therein the responsibility of not infringing Adobe's licensing policy. The ISO Central Secretariat accepts no liability in this area.

Adobe is a trademark of Adobe Systems Incorporated.

Details of the software products used to create this PDF file can be found in the General Info relative to the file; the PDF-creation parameters were optimized for printing. Every care has been taken to ensure that the file is suitable for use by ISO member bodies. In the unlikely event that a problem relating to it is found, please inform the Central Secretariat at the address given below.

## iTeh STANDARD PREVIEW (standards.iteh.ai)

[SIST ISO 5667-20:2010](https://standards.iteh.ai/catalog/standards/sist/f9ec8108-dc82-4f43-ae7a-6a6ee5196a23/sist-iso-5667-20-2010)

<https://standards.iteh.ai/catalog/standards/sist/f9ec8108-dc82-4f43-ae7a-6a6ee5196a23/sist-iso-5667-20-2010>

**COPYRIGHT PROTECTED DOCUMENT**

© ISO 2008

All rights reserved. Unless otherwise specified, no part of this publication may be reproduced or utilized in any form or by any means, electronic or mechanical, including photocopying and microfilm, without permission in writing from either ISO at the address below or ISO's member body in the country of the requester.

ISO copyright office  
Case postale 56 • CH-1211 Geneva 20  
Tel. + 41 22 749 01 11  
Fax + 41 22 749 09 47  
E-mail [copyright@iso.org](mailto:copyright@iso.org)  
Web [www.iso.org](http://www.iso.org)

Published in Switzerland

## Contents

Page

Foreword.....	iv
Introduction .....	vi
<b>1 Scope .....</b>	<b>1</b>
<b>2 Summary of key points .....</b>	<b>1</b>
<b>3 Types of error and variation .....</b>	<b>2</b>
3.1 General.....	2
3.2 Analytical error.....	3
3.3 Overall uncertainty .....	3
<b>4 Activities .....</b>	<b>4</b>
4.1 Estimation of summary statistics .....	4
4.2 Thresholds for water quality and compliance .....	6
4.3 Confidence of failure .....	7
4.4 Methods for thresholds expressed as percentiles .....	7
4.5 Non-parametric methods .....	10
4.6 Look-up tables .....	13
<b>5 Definition of thresholds .....</b>	<b>14</b>
5.1 General.....	14
5.2 Ideal thresholds .....	14
5.3 Absolute limits .....	15
5.4 Percentage of failed samples .....	18
5.5 Calculating limits for effluent discharges .....	18
<b>6 Declaring that a substance has been detected .....</b>	<b>19</b>
<b>7 Detecting change .....</b>	<b>20</b>
<b>8 Classification.....</b>	<b>23</b>
8.1 General.....	23
8.2 Confidence that class has changed.....	25
<b>Annex A (informative) Calculation of confidence limits.....</b>	<b>27</b>
<b>Annex B (informative) Calculation for the binomial distribution.....</b>	<b>29</b>
<b>Annex C (informative) Sample results with high error or reported as less than a limit of detection .....</b>	<b>32</b>
<b>Bibliography .....</b>	<b>34</b>

## Foreword

ISO (the International Organization for Standardization) is a worldwide federation of national standards bodies (ISO member bodies). The work of preparing International Standards is normally carried out through ISO technical committees. Each member body interested in a subject for which a technical committee has been established has the right to be represented on that committee. International organizations, governmental and non-governmental, in liaison with ISO, also take part in the work. ISO collaborates closely with the International Electrotechnical Commission (IEC) on all matters of electrotechnical standardization.

International Standards are drafted in accordance with the rules given in the ISO/IEC Directives, Part 2.

The main task of technical committees is to prepare International Standards. Draft International Standards adopted by the technical committees are circulated to the member bodies for voting. Publication as an International Standard requires approval by at least 75 % of the member bodies casting a vote.

Attention is drawn to the possibility that some of the elements of this document may be the subject of patent rights. ISO shall not be held responsible for identifying any or all such patent rights.

ISO 5667-20 was prepared by Technical Committee ISO/TC 147, *Water quality*, Subcommittee SC 6, *Sampling (general methods)*.

ISO 5667 consists of the following parts, under the general title *Water quality — Sampling*:

- *Part 1: Guidance on the design of sampling programmes and sampling techniques*
- *Part 3: Guidance on the preservation and handling of water samples*
- *Part 4: Guidance on sampling from lakes, natural and man-made*
- *Part 5: Guidance on sampling of drinking water from treatment works and piped distribution systems*
- *Part 6: Guidance on sampling of rivers and streams*
- *Part 7: Guidance on sampling of water and steam in boiler plants*
- *Part 8: Guidance on the sampling of wet deposition*
- *Part 9: Guidance on sampling from marine waters*
- *Part 10: Guidance on sampling of waste waters*
- *Part 11: Guidance on sampling of groundwaters*
- *Part 12: Guidance on sampling of bottom sediments*
- *Part 13: Guidance on sampling of sludges from sewage and water treatment works*
- *Part 14: Guidance on quality assurance of environmental water sampling and handling*
- *Part 15: Guidance on preservation and handling of sludge and sediment samples*
- *Part 16: Guidance on biotesting of samples*

- *Part 17: Guidance on sampling of bulk suspended solids*
- *Part 18: Guidance on sampling of groundwater at contaminated sites*
- *Part 19: Guidance on sampling of marine sediments*
- *Part 20: Guidance on the use of sampling data for decision making — Compliance with thresholds and classification systems*

The following parts are under preparation:

- *Part 21: Guidance on sampling of drinking water distributed by non-continuous, non-conventional means*
- *Part 22: Guidance on design and installation of groundwater sample points*
- *Part 23: Determination of significant pollutants in surface waters using passive sampling*

## iTeh STANDARD PREVIEW (standards.iteh.ai)

[SIST ISO 5667-20:2010](https://standards.iteh.ai/catalog/standards/sist/f9ec8108-dc82-4f43-ae7a-6a6ee5196a23/sist-iso-5667-20-2010)

<https://standards.iteh.ai/catalog/standards/sist/f9ec8108-dc82-4f43-ae7a-6a6ee5196a23/sist-iso-5667-20-2010>

## Introduction

This part of ISO 5667 concerns the use of information on water quality obtained by taking samples in taking decisions — in measuring success, failure or change, in the context of the inevitable uncertainties associated with sampling. This part of ISO 5667 provides guidance on controlling the risk of such uncertainties leading to non-optimal decisions.

Non-optimal decisions can also stem from the way in which thresholds for discharges and targets for environmental waters are formulated or set out in regulations and permits. This part of ISO 5667 also examines the problems caused when compliance with these thresholds is assessed using data obtained by sampling.

This part of ISO 5667 aims to ensure that future laws, regulations, and guidance assert the requirement to assess and report statistical significance.

NOTE 1 Decisions might result in the commendation or criticism of people, sites, companies, sectors or nations. Decisions can give rise to legal action and/or expensive and time-consuming remedial actions to improve water quality.

Figure 1 shows the links between the following topics:

- the setting up of thresholds for taking decisions on the need to improve water quality, possibly including criteria to minimize water quality deterioration;
- the establishment of sampling programmes to satisfy the requirements of these thresholds and the need to assess performance against them;
- making use of the outcome of sampling programmes to take decisions.

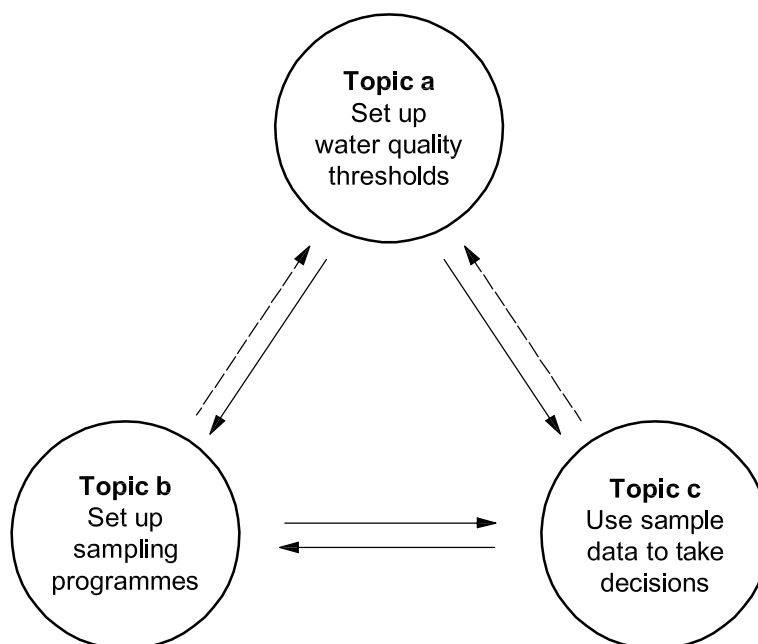


Figure 1 — Links between topics associated with sampling and taking decisions



This part of ISO 5667 deals with topic c). Topics a) and b) are huge and wide ranging in their own right, and their detailed treatment lies outside the scope of this part of ISO 5667. Nevertheless, this part of ISO 5667 does make recommendations for the expression of targets and thresholds for water quality [topic a)], which are important when using sample data to take decisions. This part of ISO 5667 also gives advice on what is required for sampling programmes [topic b)] in order that they be compatible with the way thresholds are defined, and so as to place no unnecessary difficulties and errors in the process of taking decisions.

Other areas which lie outside the scope of this part of ISO 5667 are: the detailed mechanics of taking and handling samples; assurance that samples are representative over time of the body of water being sampled; and performance of chemical analyses on samples. These are all covered in other documents. Nonetheless, if poorly obtained results from these areas can add substantially to overall sampling uncertainties and impose extra difficulties in taking decisions. This part of ISO 5667 describes some of these extra difficulties.

This part of ISO 5667 does not cover the full range of statistical techniques that may be applied and the circumstances in which they should be used. The main purpose is to establish the principle that uncertainty from sampling and analysis (and errors generally) should always be assessed and taken into account as part of the process of taking decisions. If this is not done, incorrect decisions can result, for example, on where action is needed, and the scale of that action.

NOTE 2 Some statistical techniques are used as illustrative examples. These are techniques that have seen routine use in some regulatory regimes that take proper account of statistical uncertainties. They are suitable for use in situations that resemble the worked examples discussed.

It is not the purpose of this part of ISO 5667 to direct the development of regulatory conditions. This part of ISO 5667 provides principles and tools to support management, including regulation. It is recognised that regulatory thresholds are developed using a range of strategies that incorporate technical, social and legal considerations. It is also recognised that tools other than statistical data analysis are likely to be used in interpreting and applying thresholds.

[SIST ISO 5667-20:2010](https://standards.iteh.ai/catalog/standards/sist/f9ec8108-dc82-4f43-ae7a-6a6ee5196a23/sist-iso-5667-20-2010)

<https://standards.iteh.ai/catalog/standards/sist/f9ec8108-dc82-4f43-ae7a-6a6ee5196a23/sist-iso-5667-20-2010>

**iTeh STANDARD PREVIEW**  
**(standards.iteh.ai)**

[SIST ISO 5667-20:2010](#)

<https://standards.iteh.ai/catalog/standards/sist/f9ec8108-dc82-4f43-ac7a-6a6ee5196a23/sist-iso-5667-20-2010>

# Water quality — Sampling —

## Part 20:

# Guidance on the use of sampling data for decision making — Compliance with thresholds and classification systems

## 1 Scope

This part of ISO 5667 establishes principles, basic requirements, and illustrative methods for dealing with the use of sample data for decision making based on the assessment of the confidence that water quality:

- a) meets targets and complies with thresholds;
- b) has changed; and/or
- c) lies in a particular grade in a classification system.

This part of ISO 5667 also specifies methods for preliminary examination of the sensitivity of decisions to error and uncertainty, although it does not cover the full range of statistical techniques.

This part of ISO 5667 provides general advice on decision making related to constraint formulation for expression of thresholds and targets and the form and scale of sampling programmes.

**NOTE 1** In the water industry, “standard” is commonly used to indicate the value or limit of a parameter of interest. However, in this part of ISO 5667, the term “threshold” is used to avoid confusion with published national, regional, and International Standards.

**NOTE 2** This document is framed in terms of sampling and measurement of chemical concentrations, in particular those subject to strong day-to-day temporal variations. The principles apply, however, to any item estimated by sampling which is subject to random error, including microbiological and biological data, and data subject to strong spatial variations.

## 2 Summary of key points

Water quality is often assessed by the results of chemical analysis of a number of samples taken over a period of time.

Uncertainty is introduced by the action of random chance in taking samples. It can be present in any set of measurements of water quality taken over a period of time. The values for chemical analysis of these samples depend on the quality of the particular small volumes of water that are extracted or measured. If water quality varies in space or time, a second set of samples taken over the same period will have different values because these samples are made up of different small volumes of water taken at different times. Each set of samples allows an estimate of the true water quality. These estimates will differ: they will have a different mean and span a different range. They have the potential, if taken at face value, to suggest different conclusions about compliance with thresholds and targets.

Sampling uncertainty (or sampling error) is the term often given to this effect. Sampling uncertainty includes uncertainties and errors associated with chemical analysis, and occurs even in the case of trivial errors in chemical analysis and if there are no mistakes in the methods by which samples are taken and handled.

**ISO 5667-20:2008(E)**

Sampling uncertainty is reduced if more samples are taken, but the scale of the uncertainty is often unappreciated.

In this part of ISO 5667, “overall uncertainty” includes these chance sampling effects and all the other sources of variation in a set of samples. This variability reflects the underlying signals generated by natural or perhaps unnatural processes; it includes the effects of errors in chemical analysis and the handling of samples. It might contain systematic variations from trends and diurnal, weekly, and seasonal cycles. In this context, the more appropriate term is “overall uncertainty”, “overall error” or “total assay error” (ISO/IEC Guide 99:1993<sup>[5]</sup>).

Overall uncertainty should be quantified, at least approximately, and taken into account in all cases where water quality varies and sampling is used to estimate information used in decision making. This includes assessing compliance with thresholds (see Clause 5), deciding whether water quality has changed (see Clause 7), and putting waters into grades in classification systems (see Clause 8). This part of ISO 5667 recommends that:

- a) thresholds for which compliance is assessed by sampling should be defined or used so that the overall uncertainty can be estimated and dealt with appropriately (see 5.2);
- b) thresholds defined as absolute limits should be treated as percentiles when assessing compliance using sampling (see 5.3);
- c) thresholds defined as limits to be met by a percentage of samples should be defined or used as the corresponding percentiles (see 5.4);
- d) the degree of confidence should be estimated when assessing compliance with thresholds (see Clause 4); and,
- e) the degree of confidence in changes or differences should be estimated when aiming to demonstrate change or no change (see 8.2).

iTeh STANDARD PREVIEW

(standards.iTech.si)

SIST ISO 5667-20:2010

<https://standards.iTech.ai/catalog/standards/sist/f9ec8108-dc82-4f43-ae7a-6a6ee5196a23/sist-iso-5667-20-2010>

**3 Types of error and variation****3.1 General**

In many procedures by which sample data are used to take decisions, there is a set of results taken over a period of time (e.g. a year). This information might be used to make such judgements as whether:

- a) water quality in a river failed to meet required thresholds;
- b) a treatment works performed better this year than last;
- c) water quality in a lake needs improvement;
- d) one company has better effluent discharge compliance than another; or
- e) most of the risk of environmental impact is from a particular type of effluent discharge.

There are unlikely to be many significant changes in water quality from second to second throughout a year, but variations from day to day are common. These can be due to diurnal cycles, the play of random errors and bias from the laboratory, the weather, step changes, day-to-day and hour-by-hour variations (perhaps in the natural processes in water or caused by discharges and abstractions and changes in these), seasonal and economic cycles, and several underlying and overlapping long-term trends and cycles.

NOTE 1 Sometimes several or most of the data are reported by a laboratory as being less than a specified limit of detection. Such data are called censored data. Depending on the types of decisions that depend on the data, special statistical techniques are available for estimating the values of summary statistics and their uncertainties.

In addition, the total set of samples shall be representative of the average quality of the masses of water from which they were taken, e.g. over a period of time under review. In estimating an annual mean, it is not acceptable for all samples to be taken in April, for example. These requirements should be set up in the design of the sampling programme.

NOTE 2 Guidance on all these aspects is given in more detail in ISO 5667-1<sup>[1]</sup>.

### 3.2 Analytical error

Analytical errors are those introduced by the process of chemical analysis and reflect that these measurements are not error free. It might be that the result for a single sample can be specified to within a specific range, e.g.  $\pm 15\%$ .

NOTE 1 The actual value of the analytical error depends on the capabilities of the equipment and the laboratory that has been used to perform the analysis. The discussion in this part of ISO 5667 focuses on random error, but there is always a risk of non-random error, e.g. when there is a change of instrument or methods, when the sample matrix varies greatly from the calibration materials, and for results just above the detection limit (ISO/IEC Guide 99:1993<sup>[5]</sup>).

NOTE 2 The results of chemical analysis are nowadays reported with uncertainty values in accordance with ISO/IEC 17025<sup>[6]</sup>.

When a mean is calculated from  $n$  samples, the effect on the uncertainty in the estimate of the mean of random errors in chemical analysis tends to average down according to  $\sqrt{n}$ . For example, if the analytical error associated with a single sample were  $\pm 15\%$ , then the error in the estimate of the mean of a set of chemical analyses would tend to reduce to something like  $\pm 4\%$  for 12 samples or to  $\pm 2,5\%$  for 36 samples.

In using samples to take decisions, this kind of error from chemical analysis augments but is often smaller than other contributions to the overall uncertainty, especially that associated with chance in the taking of a limited number of samples. Chemical analysis error comes through as an addition to that associated with chance in the taking of a limited number of samples, but it might be a small addition. {Nevertheless, some studies need to separate sampling variance from local environmental heterogeneity (see Reference [7]).}

NOTE 3 It is not commonly understood that data fully within the statistical control of a laboratory might be unsuitable for particular interpretations because of errors associated with taking a small number of samples.

NOTE 4 This observation on the relative importance of analytical error applies generally to the types of issues considered in this part of ISO 5667, but it follows from estimating the analytical error in such cases, and comparing it with other errors. The analytical error should always be estimated. Similar points can be made about making sure samples are representative, and about checking changes to methods of sampling.

When the sample results are used to estimate the value of other summary statistics such as percentiles (e.g. the 95-percentile, which is the value exceeded for 5 % of the time), the picture is similar to that for the mean, i.e. the errors are inversely proportional to  $\sqrt{n}$ , but are larger than for the mean.

### 3.3 Overall uncertainty

Uncertainty occurs because of variations in the quality of the water being sampled, and the ability of the sampling process to accurately reflect these variations. In a set of samples taken over a period of time, the results are affected by the operation of the laws of chance in the way the particular samples came to be collected. This produces uncertainty even if:

- analytical errors are close to zero<sup>1)</sup>;
- the sampling programme guarantees samples that are truly representative in time and space;
- there are no mistakes in handling the samples and recording the results of analysis.

1) Nearly always this is a hypothetical possibility. Many trace elements are measured near their detection limits and have analytical uncertainty of about  $\pm 100\%$ . Many organic chemicals can have recoveries of  $\pm 50\%$ .