
Hacksaw blades —

**Part 2:
Dimensions for machine blades**

Lames de scies droites à métaux —

Partie 2: Dimensions des lames à machine

iTeh STANDARD PREVIEW
(standards.iteh.ai)

ISO 2336-2:2006

<https://standards.iteh.ai/catalog/standards/sist/8cbe4619-eaab-4c50-bfbf-c1c504f586cf/iso-2336-2-2006>



PDF disclaimer

This PDF file may contain embedded typefaces. In accordance with Adobe's licensing policy, this file may be printed or viewed but shall not be edited unless the typefaces which are embedded are licensed to and installed on the computer performing the editing. In downloading this file, parties accept therein the responsibility of not infringing Adobe's licensing policy. The ISO Central Secretariat accepts no liability in this area.

Adobe is a trademark of Adobe Systems Incorporated.

Details of the software products used to create this PDF file can be found in the General Info relative to the file; the PDF-creation parameters were optimized for printing. Every care has been taken to ensure that the file is suitable for use by ISO member bodies. In the unlikely event that a problem relating to it is found, please inform the Central Secretariat at the address given below.

iTeh STANDARD PREVIEW
(standards.iteh.ai)

ISO 2336-2:2006

<https://standards.iteh.ai/catalog/standards/sist/8cbe4619-eaab-4c50-bfbf-c1c504f586cf/iso-2336-2-2006>

© ISO 2006

All rights reserved. Unless otherwise specified, no part of this publication may be reproduced or utilized in any form or by any means, electronic or mechanical, including photocopying and microfilm, without permission in writing from either ISO at the address below or ISO's member body in the country of the requester.

ISO copyright office
Case postale 56 • CH-1211 Geneva 20
Tel. + 41 22 749 01 11
Fax + 41 22 749 09 47
E-mail copyright@iso.org
Web www.iso.org

Published in Switzerland

Foreword

ISO (the International Organization for Standardization) is a worldwide federation of national standards bodies (ISO member bodies). The work of preparing International Standards is normally carried out through ISO technical committees. Each member body interested in a subject for which a technical committee has been established has the right to be represented on that committee. International organizations, governmental and non-governmental, in liaison with ISO, also take part in the work. ISO collaborates closely with the International Electrotechnical Commission (IEC) on all matters of electrotechnical standardization.

International Standards are drafted in accordance with the rules given in the ISO/IEC Directives, Part 2.

The main task of technical committees is to prepare International Standards. Draft International Standards adopted by the technical committees are circulated to the member bodies for voting. Publication as an International Standard requires approval by at least 75 % of the member bodies casting a vote.

Attention is drawn to the possibility that some of the elements of this document may be the subject of patent rights. ISO shall not be held responsible for identifying any or all such patent rights.

ISO 2336-2 was prepared by Technical Committee ISO/TC 29, *Small tools*.

This second edition cancels and replaces the first edition (ISO 2336-2:1996), which has been technically revised.

ITIH STANDARD PREVIEW
(standards.iteh.ai)

ISO 2336 consists of the following parts, under the general title *Hacksaw blades*:

- *Part 1: Dimensions for hand blades* [ISO 2336-2:2006](https://standards.iteh.ai/catalog/standards/sist/8cbe4619-eaab-4c50-bfbf-1c504f586cf/iso-2336-2-2006)
- *Part 2: Dimensions for machine blades*

iTeh STANDARD PREVIEW
(standards.iteh.ai)

ISO 2336-2:2006

<https://standards.iteh.ai/catalog/standards/sist/8cbe4619-eaab-4c50-bfbf-c1c504f586cf/iso-2336-2-2006>

Hacksaw blades —

Part 2: Dimensions for machine blades

1 Scope

This part of ISO 2336 specifies the dimensions of machine hacksaw blades. It is applicable to single-edge blades of lengths from 300 mm up to 700 mm, the tooth pitch of which is no greater than 8,5 mm.

2 Normative references

The following referenced documents are indispensable for the application of this document. For dated references, only the edition cited applies. For undated references, the latest edition of the referenced document (including any amendments) applies.

ISO 2768-1, *General tolerances — Part 1: Tolerances for linear and angular dimensions without individual tolerance indications*

3 Dimensions

<https://standards.iteh.ai/catalog/standards/sist/8cbe4619-eaab-4c50-bfbf-c1c504f586cf/iso-2336-2-2006>

3.1 General

All dimensions and tolerances are given in millimetres. Tolerances not specified shall be of tolerance class “m” in accordance with ISO 2768-1.

3.2 Dimensions

The dimensions shown in Figure 1 are given in Table 1, with tooth pitch, P , and the number of teeth, N , in 25 mm. The blade length, l_1 , is the distance between centres of pin holes of diameter d . It is recommended that the centre of the pin hole be located on the centreline of the blade.

4 Designation

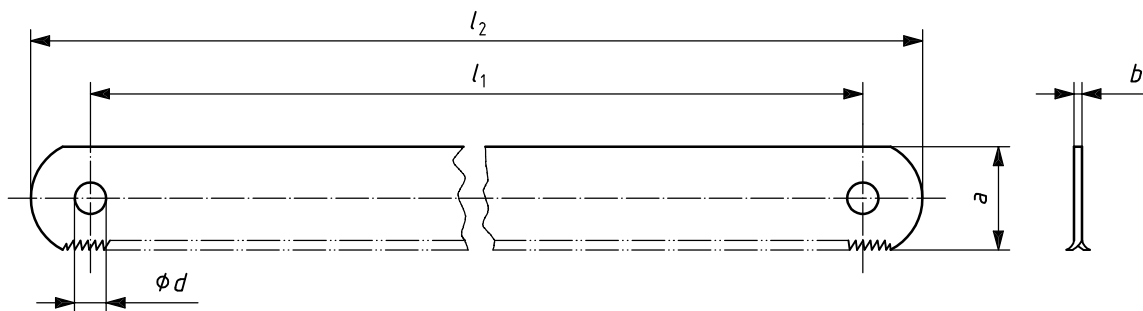
Machine hacksaw blades according to this part of ISO 2336 shall be designated as follows:

- a) “Saw blade”;
- b) reference to this part of ISO 2336 (i.e. “ISO 2336-2”);
- c) the blade length, l_1 , in millimetres;
- d) the width, a , in millimetres;

- e) the thickness, b , in millimetres;
- f) the number of teeth, N , in 25 mm.

EXAMPLE A machine hacksaw blade, of length $l_1 = 300$ mm, of width $a = 25$ mm, of thickness $b = 1,25$ mm and number of teeth in 25 mm, $N = 10$, is designated as follows:

Saw blade ISO 2336-2 - 300 × 25 × 1,25 × 10



NOTE The shape of the end blade is left to the manufacturer's discretion.

Figure 1 — Machine hacksaw blade
iTeh STANDARD PREVIEW
(standards.iteh.ai)

ISO 2336-2:2006
<https://standards.iteh.ai/catalog/standards/sist/8cbe4619-eaab-4c50-bfbf-c1c504f586cf/iso-2336-2-2006>

Table 1 — Dimensions of machine hacksaw blade

| l_1 ± 2 | a $\begin{matrix} 0 \\ -1 \end{matrix}$ | b | Tooth spacing | | l_2 max. | d H14 | | |
|------------------|--|------|---------------|-----|---------------|------------|-----|---|
| | | | P | N | | | | |
| 300 | 25 | 1,25 | 1,8 | 14 | 330 | 8,4 | | |
| | | | 2,5 | 10 | | | | |
| | | 1,5 | 1,8 | 14 | | | | |
| | | | 2,5 | 10 | | | | |
| 350 | 25 | 1,25 | 1,8 | 14 | 380 | | | |
| | | | 2,5 | 10 | | | | |
| | | 1,5 | 1,8 | 14 | | | | |
| | | | 2,5 | 10 | | | | |
| | | | 4 | 6 | | | | |
| | | | 1,8 | 14 | | | | |
| | 30 | 1,5 | 2,5 | 10 | | | | |
| | | | 4 | 6 | | | | |
| | | 2 | 1,8 | 14 | | | | |
| | | | 2,5 | 10 | | | | |
| | | | 4 | 6 | | | | |
| | | | 1,8 | 14 | | | | |
| 400 | 25 | 1,25 | 1,8 | 14 | 430 | | | |
| | | | 2,5 | 10 | | | | |
| | | 1,5 | 1,8 | 14 | | | | |
| | | | 2,5 | 10 | | | | |
| | 30 | 1,5 | 1,8 | 14 | | | | |
| | | | 2,5 | 10 | | | | |
| | | 2 | 4 | 6 | | | | |
| | | | 6,3 | 4 | | | | |
| | 40 | 2 | 4 | 6 | | 440 | | |
| | | | 6,3 | 4 | | | | |
| | | 1,5 | 2,5 | 10 | | | | |
| | | | 4 | 6 | | | | |
| 450 | 30 | 1,5 | 2,5 | 10 | 490 | | | |
| | | | 4 | 6 | | | | |
| | 40 | 2 | 2,5 | 10 | | | | |
| | | | 4 | 6 | | | | |
| 500 | 40 | 2 | 6,3 | 4 | 540 | | | |
| | | | 2,5 | 10 | | | | |
| | | | 4 | 6 | | | | |
| | | | 6,3 | 4 | | | | |
| 575 | 50 | 2,5 | 4 | 6 | 615 | | | |
| | | | 6,3 | 4 | | | | |
| | | | 8,5 | 3 | | | | |
| 600 | | | 50 | 2,5 | 4 | 6 | 640 | |
| | | | | | 6,3 | 4 | | |
| 700 | | | | | 50 | 2,5 | | 4 |
| | 6,3 | 4 | | | | | | |
| 700 | 50 | 2,5 | 8,5 | 3 | | | 745 | |
| | | | 8,5 | 3 | | | | |

iTeh STANDARD PREVIEW
(standards.iteh.ai)

ISO 2336-2:2006

<https://standards.iteh.ai/catalog/standards/sist/8cbe4619-eaab-4c50-bfbf-c1c504f586cf/iso-2336-2-2006>

ICS 25.100.40

Price based on 3 pages